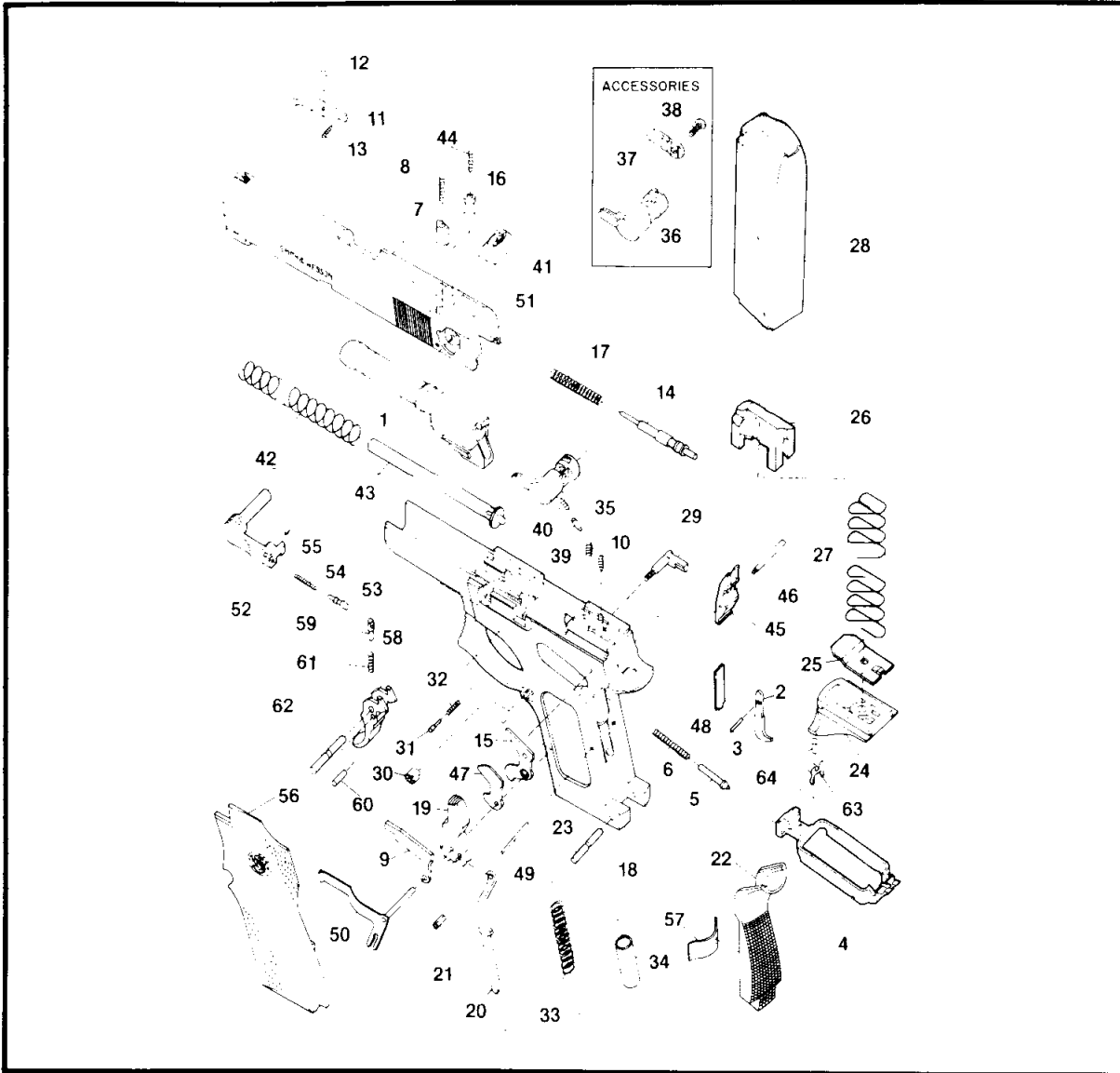


9MM AUTOMATIC PISTOL

DOUBLE ACTION MODEL No. 469

PARTSLIST • INSTRUCTIONS FOR USE • MAINTENANCE • SPECIFICATIONS



This schematic diagram and parts list conform to the current specifications provided by our Engineering Department. From time to time improvements are made in all our models. For this reason, the gun which you own may not correspond exactly with the information provided on this sheet. When requesting information or ordering parts for your gun, please provide the serial number and approximate date of purchase.



SMITH & WESSON 9MM AUTOMATIC PISTOL DOUBLE ACTION MODEL No. 469 PARTS LIST

View #	Part Number	Part Description	View #	Part Number	Part Description
1	069630000	Barrel	38	064910000	Manual Safety Lever Screw, Ambidextrous
2-3	069530000	Disconnecter Assembly Includes:	39	100310000	Manual Safety Plunger
2	069540000	Disconnecter(1)	40	063720000	Manual Safety Plunger Spring
3	068040000	Disconnecter Pin	41	069760000	Rear Sight, White Outline
4	069210000	Drawbar	42	069770000	Recoil Spring
5	061100000	Drawbar Plunger	43	069790000	Recoil Spring Guide Assembly Includes:
6	068070000	Drawbar Plunger Spring	-	069900000	Recoil Spring Guide(1), N.I.
7	068860000	Ejector Depressor Plunger	-	100210000	Recoil Spring Guide Bushing (1), N.I.
8	060140000	Ejector Depressor Plunger Spring	-	060630000	Recoil Spring Guide Plunger (1), N.I.
9	060150000	Ejector Magazine Depressor	-	060640000	Recoil Spring Guide Plunger Spring(1), N.I.
10	060170000	Ejector Spring	44	063890000	Safety Lever Plunger Spring
11	063080000	Extractor	45	069980000	Sear
12	060780000	Extractor Pin	46	069780000	Sear Pin
13	063310000	Extractor Spring	47	100120000	Sear Release Lever
14	100280000	Firing Pin	48	100010000	Sear Spring
15	100290000	Firing Pin Safety Lever	49	063040000	Sear Spring Retaining Pin
16	069250000	Firing Pin Safety Plunger	50	069810000	Sideplate
17	100300000	Firing Pin Spring	51	069820000	Slide
18	069640000	*Frame	52-55	069850000	Slide Stop Assembly Includes:
19-21	069660000	Hammer Assembly Includes:	52	069870000	Slide Stop(1)
19	069670000	Hammer	53	060830000	Slide Stop Plunger
20	069680000	Stirrup	54	063030000	Slide Stop Plunger Spring
21	061520000	Stirrup Pin	55	064700000	Slide Stop Spirol Pin
	100130000	Hammer Pin, N.I.	56	161180000	Stock Assembly Includes:
22	069690000	Insert	56	069880000	Stock, left (1)
23	062570000	Insert Pin		069890000	Stock, right (1), N.I.
24-28	100080000	Magazine Assembly Includes:	57	069650000	Stock Retaining Spring
24	069800000	Magazine Butt Plate	58-61	100320000	Trigger Assembly Includes:
25	063250000	Magazine Butt Plate Catch	58	100090000	Trigger (1)
26	100260000	Magazine Follower	59	068780000	Trigger Plunger
27	069720000	Magazine Spring	60	060110000	Trigger Plunger Pin
28	069730000	Magazine Tube	61	061220000	Trigger Plunger Spring
29	064720000	Magazine Catch	62	062570000	Trigger Pin
30	063390000	Magazine Catch Nut	63	061270000	Trigger Play Spring
31	068290000	Magazine Catch Plunger	64	061260000	Trigger Play Spring Rivet
32	068300000	Magazine Catch Plunger Spring			
33	069740000	Mainspring			
34	061280000	Mainspring Plunger			
35	069750000	Manual Safety			
36	100340000	Manual Safety, Ambidextrous			
37	100350000	Manual Safety Lever, Ambidextrous			

*Requires Factory Installation

**Not Illustrated

Smith & Wesson will refinish handguns of its own manufacture. No change of finish is offered on the Victory or Airweight* model or on Models 28, 39, 59, 60, 63, 64, 65, 66, 67, 439, 459, 469, 539, 559, 629, 639, 650, 651, 659, 681, or 686. Repair or replacement of parts are in addition to refinishing price.

S P E C I F I C A T I O N S

Caliber	9mm (Parabellum Luger)	Front Sight	Serrated Ramp with Yellow Bar
Magazine Capacity	12 rounds	Rear Sight	White Outline Square Notch
Barrel Length	3½ inches		Adjustable for Windage Only
Length Overall	6¾ inches	Stocks	Pebble Grain Molded Delrin
Weight	26 oz. with Empty Magazine	Finish	S&W Non-glare Blue
		Ammunition	9mm Luger/Parabellum

SERVICE

Should your Smith & Wesson firearm require adjustment, repair, or refinishing, we recommend most sincerely that the weapon be returned to the factory or authorized service center. There is no other way to insure that the work will be done in a properly equipped and staffed shop.

Charges are very reasonable, being based on the cost of parts replaced plus a labor charge for the time expended on the job. A labor charge for one hour is usually sufficient to cover all but very extensive overhaul jobs.

Firearms returned to the factory or authorized service center should be MARKED FOR THE ATTENTION OF THE SERVICE DEPARTMENT. A letter of instructions

should be enclosed with the gun, and shipment must be Prepaid. Adherence to these suggestions will prevent loss of time in handling at the factory.

When returning guns for service, please remove custom stocks and holsters. We cannot assume responsibility for these items.

When your firearm arrives for service, it will be very carefully inspected, together with your letter of instructions. Next, a quotation covering total cost of work to be performed will be sent to you. No actual work will be commenced before receiving your approval of our quotation.

**SEE YOUR AUTHORIZED SMITH & WESSON
SERVICE CENTERS LIST FOR YOUR LOCAL SERVICE CENTER**

SMITH & WESSON DOUBLE ACTION 9MM AUTOMATIC PISTOL

INSTRUCTIONS FOR USE

Before proceeding to use this firearm, a word of caution is in order. This pistol is as safe to handle and use as we can make it, but there is no fool-proof firearm. Be sure that the muzzle is pointing in a safe direction at all times, whether the gun is loaded or not. Make safe gun handling a habit.

To Load

Magazine capacity is 12 rounds. Release magazine by pressing magazine catch nut on left side of frame back of trigger guard. Hold MAGAZINE in one hand with the rounded or forward edge away from the palm. Place a cartridge on the forward end of the FOLLOWER, press down and to the rear with the cartridge head or base toward the rear of flat edge of the MAGAZINE. Succeeding cartridges are loaded in the same manner, one on top of another.

Place MANUAL SAFETY in the lower or "safe" position with red dot visible. Insert MAGAZINE in butt until engaged with MAGAZINE CATCH. Simply press magazine into place — do not drive in forcibly, as this practice may in time cause distortion of magazine lips and resultant malfunctions. Draw SLIDE all of the way to the rear and release. With HAMMER down and SAFETY in "safe" position, the first shot may be discharged by simply placing the MANUAL SAFETY in the upper or "fire" position and pulling the TRIGGER. The DOUBLE ACTION FEATURE cocks and releases the HAMMER in one operation as in firing a double action revolver. Subsequent shots may be fired as in traditional automatic pistols.

Upon firing the last round, the SLIDE STOP engages the SLIDE holding the action open. The MAGAZINE may now be withdrawn and reloaded. To release the SLIDE STOP press downward. When SLIDE STOP is disengaged, SLIDE will move forward to closed position. If it is desired to continue firing, the SLIDE may be left open and a loaded MAGAZINE inserted, in which case the SLIDE STOP may be depressed or the SLIDE can be released by drawing it rearward to its limit and letting it spring to battery position.

Note that a cartridge in the CHAMBER cannot be fired when the MAGAZINE is disengaged from the MAGAZINE CATCH. This is a valuable safety feature.

When unloading a loaded pistol, put MANUAL SAFETY in "safe" or low position. Press MAGAZINE RELEASE BUTTON and remove MAGAZINE. Next, draw SLIDE to rear, thus removing loaded cartridge from the CHAMBER.

The cartridges in the MAGAZINE may be removed by pushing forward on the head of each cartridge until it is released from the MAGAZINE LIPS.

Sight Adjustment

This model is equipped with FIXED SIGHTS. However, slight adjustments in windage (Right or Left) may be obtained to suit the individual shooter by drifting the dovetailed REAR SIGHT in the desired direction. Adjustment should be made preferably with a nylon drift or any material which will not damage the SIGHT.

Always move the REAR SIGHT in the direction you wish to move the point of impact on the target.

Corrections for elevation, which will be effected by range, bullet weight and velocity, must be made by holding more or less FRONT SIGHT visible in the REAR SIGHT notch.

To Disassemble (Field Strip)

1. Remove MAGAZINE by pressing MAGAZINE CATCH NUT located on left side of FRAME to rear of TRIGGER GUARD, and withdraw MAGAZINE from FRAME.
2. Draw the SLIDE to the rear far enough to insure that the BARREL chamber is not loaded.

3. Place the MANUAL SAFETY LEVER in the "Fire" or upper position, with the red dot visible.
4. While pressing to the left on the SLIDE STOP PIN (right side of FRAME), draw the SLIDE to the rear until the SLIDE STOP cut in the lower left side of the SLIDE is aligned with the forward end of the SLIDE STOP. Draw the SLIDE STOP from the FRAME.
5. Move the SLIDE forward separating it from the FRAME.
6. With the SLIDE upside down and the rear end pointing in a safe direction, firmly grasp and compress the RECOIL SPRING and lift out the RECOIL SPRING GUIDE ASSEMBLY. (Caution - In its assembled position, the RECOIL SPRING GUIDE ASSEMBLY, if accidentally disengaged, can exert sufficient force to cause injury).
7. Remove BARREL by lifting rear end up and out of SLIDE.

No further disassembly is recommended, as the PISTOL may be properly cleaned and lubricated when field stripped as described above.

To Reassemble (After Field Stripping)

1. Replace BARREL in SLIDE.
2. Replace RECOIL SPRING and RECOIL SPRING GUIDE ASSEMBLY with rear of SLIDE pointing in a safe direction, making sure the RECOIL SPRING GUIDE BUSHING is securely engaged in the small radial undercut in the BARREL lug and properly centered. Failure to properly center it will result in the RECOIL SPRING GUIDE protruding from the SLIDE after assembly.
3. Replace SLIDE on FRAME, depressing EJECTOR, SEAR RELEASE LEVER and FIRING PIN SAFETY LEVER to allow the SLIDE to travel over them. When the SLIDE STOP cut on the SLIDE is aligned with the SLIDE STOP hole in the FRAME, insert SLIDE STOP and allow SLIDE to return to battery position.
4. Replace MAGAZINE.

Care and Cleaning

Pistols should be field stripped and cleaned at reasonably frequent intervals to insure proper functioning.

Use any good commercial solvent, and after cleaning, lubricate sparingly with a light weight gun oil. Outside surfaces may be protected from corrosion by coating lightly with a rust inhibiting oil or grease.

Be careful not to drop magazines, as they may be sufficiently deformed to cause failure to feed properly.

Detail Stripping

To Disassemble Slide Assembly (After Field Stripping)

1. With the SLIDE upside down, muzzle pointing to the left, depress the FIRING PIN SAFETY PLUNGER, press the FIRING PIN forward to the limit of travel and release the FIRING PIN SAFETY PLUNGER thus locking the FIRING PIN forward. With the MANUAL SAFETY in the "fire" position depress the rear of the FIRING PIN slightly and at the same time press the MANUAL SAFETY out of the SLIDE until it stops. Rotate the MANUAL SAFETY Tab through the "safe" position to the vertical pulling it outward and separating it from the SLIDE. Remove the PLUNGER and SPRING from the MANUAL SAFETY. With the thumb over the rear of the SLIDE, depress the FIRING PIN SAFETY PLUNGER releasing the FIRING PIN and SPRING.

2. With the SLIDE topside up drift EXTRACTOR PIN from top out of tapered hole and remove EXTRACTOR and SPRING.
3. With the SLIDE topside up, drift the REAR SIGHT from the SLIDE from right to left. Remove the EJECTOR DEPRESSOR SPRING and PLUNGER and the FIRING PIN SAFETY LEVER SPRING and PLUNGER.

To Reassemble Slide Assembly

1. With the SLIDE topside up replace the EJECTOR DEPRESSOR PLUNGER and SPRING and the FIRING PIN SAFETY PLUNGER and SPRING. Drift the REAR SIGHT into place from left to right, being careful not to damage or kink the PLUNGER SPRINGS.
2. With the SLIDE upside down replace the EXTRACTOR SPRING and EXTRACTOR. Align the holes and drift in the EXTRACTOR PIN, making sure the bottom of the pin clears the track in the SLIDE.
3. With the SLIDE upside down, muzzle pointing to the left, depress the FIRING PIN SAFETY PLUNGER and insert the FIRING PIN and SPRING, pressing it as far forward as possible, and release the FIRING PIN SAFETY PLUNGER.
4. Insert the MANUAL SAFETY SPRING and PLUNGER into the MANUAL SAFETY and start the latter into place in the SLIDE until it stops against the rear of the FIRING PIN. Depress the FIRING PIN slightly and, with the MANUAL SAFETY tab in the "safe" position, press it into place while depressing the MANUAL SAFETY PLUNGER to clear its positioning recess in the SLIDE. Move the MANUAL SAFETY to the "fire" position and depress the FIRING PIN SAFETY PLUNGER allowing the FIRING PIN to return to its normal rearward position.

Note: Always check to be sure the FIRING PIN tip is not protruding from the breech face of the SLIDE.

To Disassemble Frame Assembly (After Removing Slide and Magazine)

1. Drift out the INSERT PIN located at heel of butt. Placing the PIN in the hole at the bottom of the INSERT, remove the latter by pulling rearward. (Be sure the HAMMER is not cocked.) Remove the STOCKS. Pull out the SIDE PLATE ASSEMBLY, which includes the HAMMER and SEAR PINS, located on the left rear of the FRAME. Lift out the HAMMER and STIRRUP ASSEMBLY. The SEAR will fall free. Lift out the EJECTOR MAGAZINE DEPRESSOR and SPRING, the SEAR RELEASE LEVER and the FIRING PIN SAFETY LEVER and SPRING.

2. Drift the TRIGGER PIN out from the left side, allowing the DRAWBAR to move back to the rear of the FRAME. Tip the FRAME upward, butt down, allowing the DRAWBAR PLUNGER and SPRING to drop out. Push the TRIGGER forward and upward out of the FRAME. Place the FRAME on its right side so that the MAGAZINE CATCH body is supported. Depress and hold MAGAZINE CATCH PLUNGER while turning MAGAZINE CATCH NUT counter-clockwise to remove. Lift FRAME and remove MAGAZINE CATCH ASSEMBLY. Remove MAGAZINE CATCH PLUNGER and SPRING.

To Reassemble Frame Assembly

1. Insert MAGAZINE CATCH in FRAME. Support FRAME on solid surface and insert MAGAZINE CATCH SPRING and PLUNGER. Depress PLUNGER and assemble MAGAZINE CATCH NUT. Turn until shank of MAGAZINE CATCH is slightly below surface of NUT. Release PLUNGER and let it snap into notch.
2. Insert TRIGGER downward through top of FRAME. Insert DRAWBAR SPRING and PLUNGER in FRAME. Insert DRAWBAR through rear of FRAME, engaging DRAWBAR PLUNGER. Hold DRAWBAR in position and with FRAME bottomside up insert DISCONNECTOR.
3. Grasp the TRIGGER and work the DRAWBAR and TRIGGER PLAY SPRING assembly fully forward so that the DRAWBAR is *under* the foot of the DISCONNECTOR. Insert the TRIGGER PIN.
4. Insert the SEAR, and holding it in place, insert the SEAR PIN with the grooved end to the left of the FRAME.
5. Insert the EJECTOR MAGAZINE DEPRESSOR SPRING and the FIRING PIN SAFETY LEVER SPRING. Insert the EJECTOR MAGAZINE DEPRESSOR, HAMMER and STIRRUP ASSEMBLY, SEAR RELEASE LEVER and the FIRING PIN SAFETY LEVER, in order from left to right. Pass the SIDE PLATE STUD, from the left side of the FRAME, through the above components and snap the tab of the SIDE PLATE over the grooved end of the SEAR PIN. Note: Check to be sure the three levers function freely.
6. Set the STOCKS in place.
7. Place the MAINSPRING and MAINSPRING PLUNGER over the STIRRUP. Bring the INSERT into position by guiding the MAINSPRING PLUNGER into its recess in the INSERT. Place top of INSERT into the FRAME and swing the lower portion into place by pressing upward and forward. (Be sure the Hammer is forward.) Replace INSERT PIN.



Smith & Wesson

BANGOR PUNTA

2100 Roosevelt Avenue
Springfield, Massachusetts 01101 USA
Telephone (413) 781-8300
TELEX: 955465 WESSON SPM
or 6817064 SMIWS UW
CABLE: WESSON SPM