

**INSTRUCTION MANUAL
FOR**

RUGER®

MODEL 10/22® CARBINE



A COPY OF THE INSTRUCTION MANUAL FOR EACH MODEL RUGER FIREARM
IS AVAILABLE FROM THE FACTORY ON REQUEST.
THESE INSTRUCTION MANUALS CONTAIN IMPORTANT WARNINGS
WHICH SHOULD BE UNDERSTOOD BEFORE USING THESE FIREARMS.

STURM, RUGER & Company, inc.
SOUTHPORT, CONNECTICUT 06490
U.S.A.

*RUGER FIREARMS ARE DESIGNED AND MANUFACTURED
IN RUGER FACTORIES IN THE UNITED STATES OF AMERICA.*

B6/55/9-78

GENERAL

The RUGER 10/22 is a semi-automatic rimfire rifle chambered for .22 Long Rifle cartridges. The 10/22 has a 10-shot detachable Rotary Magazine, which fits smoothly within the configuration of the rifle.

The ignition of the 10/22 is by hammer, which imparts an initial resistance to the opening of the bolt, thereby minimizing gas leakage at the breech. The hammer-trigger mechanism incorporates a disconnecter which is operated by the over-travel of the hammer as it is being cocked by the bolt on the rearward stroke. The rearward motion of the bolt is arrested by an anti-rebound device (bolt stop pin) in the rear of the receiver which engages a cam surface on the rear of the bolt. This unique design feature increases the time interval for lifting the next cartridge to feed position and permits the use of a mild, easily-compressed magazine spring.

The barrel is attached to the receiver by means of two longitudinal screws which, operating through the heavy V-block barrel-retainer, rigidly lock these parts together.

As the bolt moves to the rear, driven by the expansion of gas in the chamber, the fired case is extracted and ejected automatically. On the forward stroke of the bolt, a cartridge is fed from the throat of the magazine into the chamber.

OPERATION OF SAFETY

WARNING 1. As in any auto-loading firearm, after each shot is fired this rifle is immediately ready to fire again. *Re-engage your safety* whenever you are not on target.

WARNING 2. The safety in your RUGER 10/22, and in all RUGER firearms, is correctly designed, fitted and tested. However, *any* mechanical device *can fail*. Never point your firearm at anything but a safe target and never rely upon the safety to justify careless handling.

The sliding cross-button type safety is located in the forward portion of the trigger guard and may be operated only when the hammer is cocked. On one end of the safety there is a red band: when this is exposed it indicates danger i.e., the gun will fire when the trigger is pulled.

Another way to remember the operation of the safety is as follows: *If* the safety is engaged (hammer locked) the shooter will have to make two deliberate movements with his right forefinger in order to fire the gun. First, he will press the safety to disengage it, then secondly move his finger back to the trigger. It will be noted that this release of the safety can be performed as the gun is raised to the shoulder without disturbing the position of the hand on the grip of the stock (assuming, of course, that the shooter is right-handed).

AMMUNITION

The RUGER 10/22 is designed to use .22 Long Rifle rimfire cartridges only, either standard or high velocity.

TO LOAD AND FIRE

1. Engage the safety, if you wish to be properly cautious.
2. To remove magazine, use either thumb to depress magazine latch (located just behind magazine) and at the same time grasp the magazine between thumb and forefinger of same hand to lift it clear.
3. Load the magazine by sliding the cartridges rearwardly and downwardly into the magazine throat-opening.
4. Insert magazine into the firearm, bullet end of the cartridges toward the muzzle (Magazine cannot be seated if reversed).
5. Load a round into the chamber by fully retracting the bolt handle and then allowing it to go forward.
6. If the safety is then disengaged, the rifle is ready to fire.

Three Steps for SAFE UNLOADING

1. Remove magazine.
2. Draw bolt to rear position.
3. Look inside to be sure that chamber is empty.

BOLT LOCK

1. The bolt lock is located next to the magazine latch, to the front of the trigger guard.
2. The bolt lock provides manually operated means to retain the bolt in its rearward, or open, position, thus assisting in cleaning or providing an inoperative safe condition.
3. To engage the bolt lock, pull bolt handle to the extreme rear position, and while holding the bolt lock depressed, release the bolt handle. The bolt is now locked in its open position.
4. To release the bolt lock, pull the bolt handle to the extreme rear position and hold it there, while the bolt lock is depressed and released. The bolt is now free to go forward.

NOTE: We have deliberately designed this bolt lock so that merely retracting the bolt will not disengage the lock. This is a true "lock" and requires the deliberate depressing and release of the lock itself, while the bolt is held to the rear, to avoid the possibility of an accidental release of the bolt from its locked position.

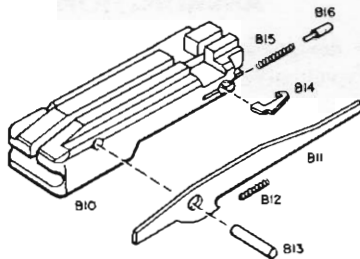


Figure #1 — Bolt

CARE AND CLEANING

The mechanism should be lubricated with light machine oil or gun oil. Do not oil too heavily. The most significant lubrication points are as follows:

1. Various pivot points in the trigger guard housing, such as the trigger pivot, hammer pivot, safety, etc.

Before shooting this, or any firearm, always check the bore to be sure it is free of grease, heavy oil or any obstructions whatever.

As a rust prevention measure, all surfaces, including the bore of the barrel, should be wiped with oil after use. Do not flood the bore with oil — a light film of oil is best.

A comprehensive field-cleaning is not required more than once every five hundred rounds. The purpose of such cleaning is only to remove powder residue from internal components and as a rust prevention procedure in the event that the gun has been soaked or submerged in water. If sand or other foreign matter in any appreciable quantity enters the mechanism, the reliability of functioning will probably be impaired until the gun is dismantled and thoroughly cleaned. (See Field Stripping Procedure).

FIELD STRIPPING

The procedure includes only the removal of the operating mechanical components from the stock and embraces the following:

1. Remove the magazine.
2. Loosen the front band screw and remove the front band.
3. Loosen barrel-stock screw.
4. Push safety button so that an equal amount of button is exposed on each side. This is necessary because of the carefully dimensioned trigger-housing area of the stock.
5. Swing barrel and receiver mechanism upward away from the fore-end. *Be careful not to lose receiver and trigger housing cross-pins which may slip out of position.*
6. Assembly is in reverse.

NOTE: This disassembly is all that is ever required for normal care and cleaning and further disassembly is not recommended.

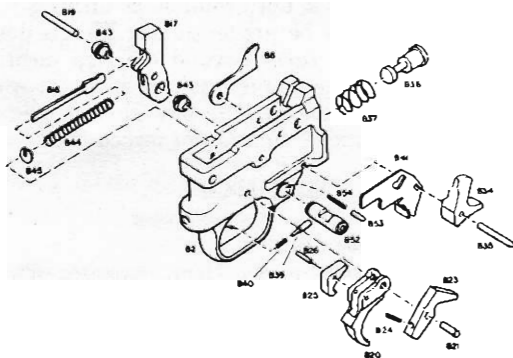


Figure #2 — Trigger

DISASSEMBLY OF BOLT

The mechanism having been removed from the stock, as described above, proceed as follows:

1. Remove the two trigger guard-receiver assembly pins and the bolt arrestor pin.
2. Pull bolt handle to rear of receiver. Holding handle in this position, remove bolt by lifting its forward end out of engagement with the bolt handle.
3. Bolt handle assembly is then removed through side of receiver.
4. It is not necessary or advisable to remove the barrel, but it may be removed by unscrewing the two barrel-receiver retaining screws.
5. REASSEMBLY is in reverse order, except that bolt handle will have to be positioned to receive bolt. This can be done by pressing rearwardly on the handle at point near the guide-rod end holding the handle against spring tension in the correct position to receive the bolt.

DISMANTLING OF MAGAZINE

It is not recommended, or necessary, to disassemble the magazine. It may be cleaned easily by using a brush and powder solvent. If, however, you decide to dismantle the magazine, merely unscrew the magazine screw.

DO NOT remove Rotor spring from Rotor.

TO REASSEMBLE MAGAZINE

1. Insert and retain the magazine screw in the magazine shell.
2. Place rotor and rotor spring assembly over magazine screw with longer hub of rotor toward head of screw.
3. Place magazine throat in its proper position, engaging the larger hub in the forward recess.
4. Place magazine shell cap in position.
5. While holding magazine assembly together, place hex magazine nut into the exposed end of the spring and rotate the nut until the hook of the spring engages the retaining hole in the nut.

6. Then rotate hex nut clockwise until rotor stops turning.
7. The rotor spring must now be pre-tensioned. This is done by turning the hex nut an additional $1\frac{1}{4}$ turns beyond the stop mentioned in 6 above.
8. Push hex nut into hex recess and retain it in place while the magazine screw is completely threaded into the nut. Do not over-tighten magazine screw — it should be snugged up, but not forced.

SERVICE

PARTS:

1. All parts orders should be sent to:
Sturm, Ruger & Co., Inc., Product Service Dept., *Newport, New Hampshire 03773.*
2. Please send remittance with order for parts. Because of handling costs, we cannot accept orders for parts for less than \$1.00.
3. Order parts by both name and number.

FIREARMS:

1. Ruger 10/22 Carbines returned for service should be sent to:
Sturm, Ruger & Co., Inc., Product Service Dept., *Newport, New Hampshire 03773.*
2. Rifles shipped to factory should be sent prepaid. We will not accept collect shipments.
3. For best repair service, always enclose letter furnishing serial number and Model of rifle. Also, state nature of trouble experienced or of work desired. (Merely stating "defective" or "repair" is inadequate information.) Please enclose copies of any previous correspondence.
4. Work performed will bear a net minimum labor charge of \$5.00. The charge for rebluing is \$15.00, which includes labor.
5. Federal regulations must be complied with when shipping any firearm. In certain states and under certain regulations, it may be *impossible* for us to return a repaired firearm to an individual. It is therefore most strongly recommended that all firearms sent to us for repair, be sent through a federally licensed dealer!

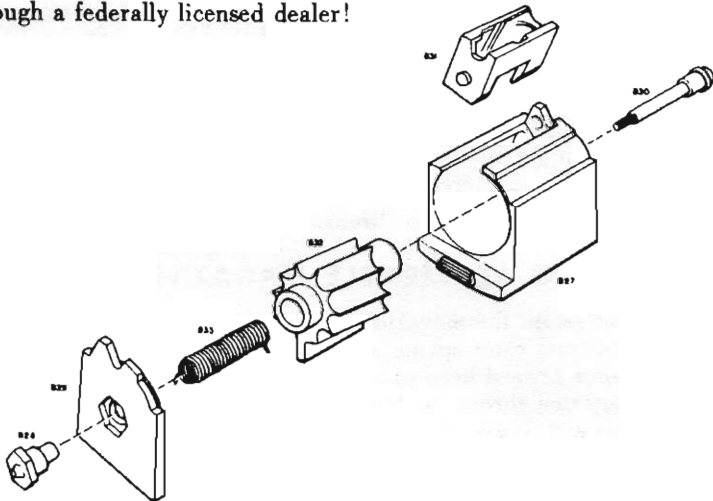


Figure #3 — Magazine

WARNING

Check chamber before shipping firearm. If firearms are sent to us in a loaded condition, we must notify Federal authorities.

Please do NOT send to our factory your scope or rifle case with the firearm being sent to us for repair.

MODEL 10/22 PARTS LIST

Note: Replacement parts marked → must be fitted by a person qualified in gun repair. Parts marked * must be installed at the factory (Plus \$10.00 Net Labor charge).

Parts No.	Description	Price
B-3	Barrel	\$17.75
B-68	Barrel Band	2.00
B-69	Barrel Band Screw	.50
B-66	Barrel Retainer (V-Block)	1.50
B-67	Barrel Retainer Screw (2)	per pair .50
B-10	→ Bolt only	10.00
B-10AC	→ Bolt Assembly, complete	11.25
B-7	Bolt Handle, Guide Rod and Recoil Spring Assembly (Available only as an assembly)	4.00
B-41	Bolt Lock	1.00
B-42	Bolt Lock Spring	.50
B-46	Bolt Stop Pin	.50
B-63	Butt Plate (Specify Carbine or Sporter)	2.50
B-64	Butt Plate Screw (2)	per pair .50
B-25	Disconnecter	1.00
B-26	Disconnecter Pivot Pin	.50
B-8	Ejector	.50
B-14	Extractor	.50
B-16	Extractor Plunger	.50

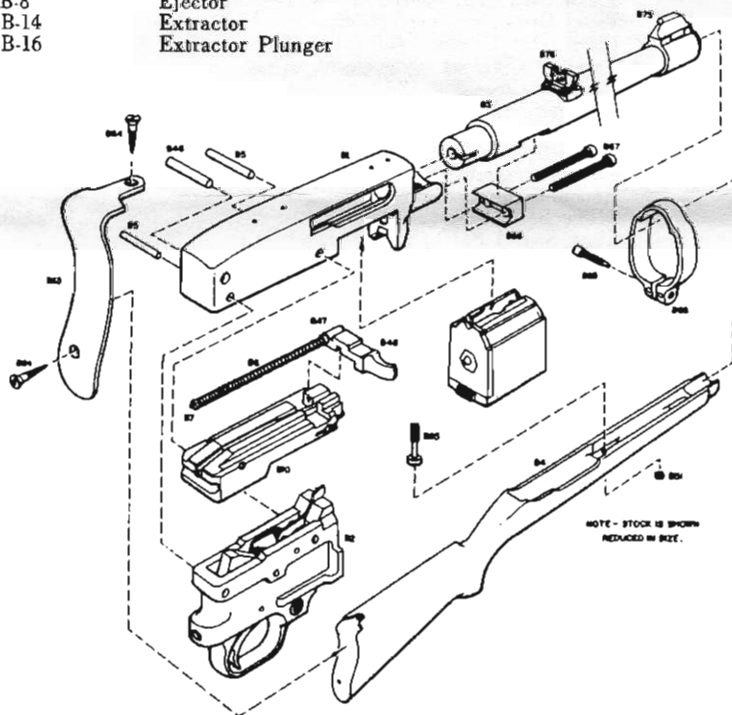


Figure #4 — Complete Assembly

B-51	Escutcheon, Carbine Stock	.50
B-106	Escutcheon, International Stock (No Longer Available)	
B-105	Escutcheon Screw, Intn'l Stock	.50
B-15	Extractor Spring	.50
B-11	Firing Pin	1.50
B-12	Firing Pin Rebound Spring	.50
B-13	Firing Pin Stop Pin	.50
B-17	→ Hammer	4.00
B-18	Hammer Strut	.50
B-19	Hammer Pivot Pin	.50
B-43	Hammer Bushing (2)	per pair 1.00
B-44	Hammer Spring	.50
B-45	Hammer Strut Washer	.50
BX-1	Magazine, Complete	4.50
B-29	Magazine Cap	.50
B-28	Magazine Cap Nut	.50
B-34	Magazine Latch	1.50
B-35	Magazine Latch Pivot Pin & Ejector Pin (2 Req'd)	per pair .50
B-36	Magazine Latch Plunger	.50
B-37	Magazine Latch Plunger Spring	.50
B-32	Magazine Rotor	1.00
B-33	Magazine Rotor Spring	.50
B-30	Magazine Screw	1.00
B-27	Magazine Shell	1.50
B-31	Magazine Throat (Steel)	2.00
B-107	Medallion	.50
B-102	Muzzle Cap	6.00
B-103	Muzzle Cap Screw	.25
B-104	Muzzle Cap Escutcheon	.50
	Pistol Grip Cap, Sporter (old type)	2.00
	Pistol Grip Cap, International (No Longer Available).	
	Pistol Grip Cap Screws	.25
B-1	* Receiver (Sold as replacement only)	21.00
B-5	Receiver Cross Pin (2)	per pair .50
B-83	Receiver Filler Screws (4 Req'd) (top of receiver)	per set 1.00
B-7	Recoil Spring, Guide Rod and Bolt Handle Assembly (available only as an assembly)	4.00
B-22	Rebound Spring Stop Pin	.50
SBA	Scope Base Adapter	2.00
B-92	Sling Swivel Base (Sporter only)	2.00
B-93	Sling Swivel Base Screws (each)	.50
B-99R	Stock Assembly, Complete, Carbine	37.50
B-99SP	Stock Assembly, Complete, Sporter (checkered)	66.00
B-99X	Stock Assembly, Complete, International (no longer available)	
B-92A	Take-Down Screw, Sporter Style	.50
B-23	→ Sear	1.50
B-24	→ Sear Spring	.50
B-52	→ Safety	.75
B-53	→ Safety Detent Plunger	.50
B-54	→ Safety Detent Plunger Spring	.50
B-75	Sight, Front, (Bead)	5.00
B-76	Sight, Rear (open)	3.50
B-77	Sling Swivel (Front) (Carbine only)	.75
B-78	Sling Swivel (Rear) (all styles)	.75
	Sling Swivel (front) mannlicher style complete	2.50
B-2AC	Trigger Guard Assembly, Complete	18.00
B-20	Trigger	1.75
B-21	Trigger Pivot Pin	.50
B-2	Trigger Guard	12.00
B-39	Trigger Plunger	.50
B-40	Trigger Plunger Spring	.50
B-65	Take-Down Screw (Carbine style)	.50

SPECIFICATIONS SUBJECT TO CHANGE AT OUR DISCRETION
WITHOUT NOTICE.