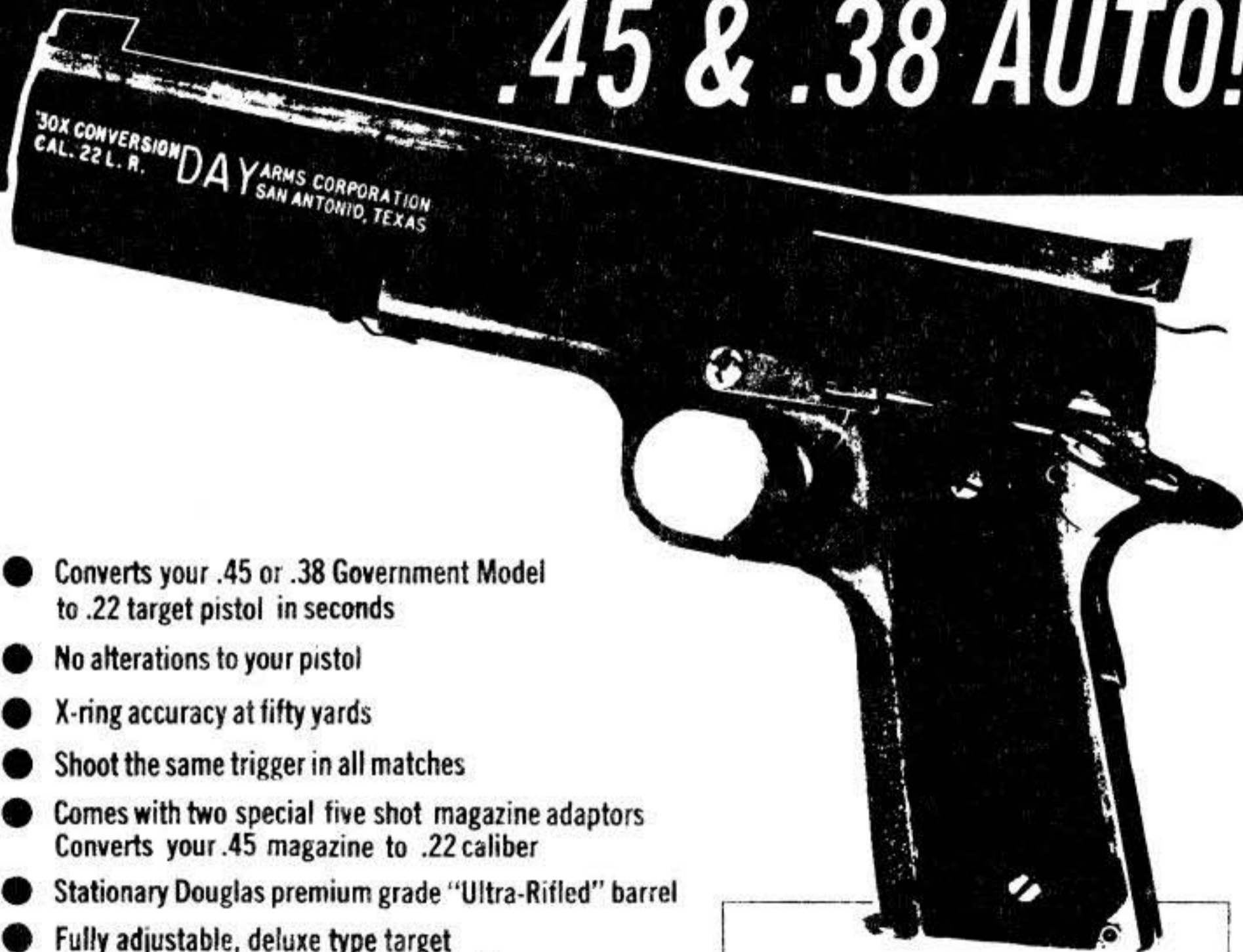


NEW! 30-X[®] .22 TARGET CONVERSION FOR THE .45 & .38 AUTO!



- Converts your .45 or .38 Government Model to .22 target pistol in seconds
- No alterations to your pistol
- X-ring accuracy at fifty yards
- Shoot the same trigger in all matches
- Comes with two special five shot magazine adaptors
Converts your .45 magazine to .22 caliber
- Stationary Douglas premium grade "Ultra-Rifled" barrel
- Fully adjustable, deluxe type target sights installed on a stationary steel rib
- Changes back instantly for center-fire
- No special tools necessary
- Cost less than a accuracy job, including sights

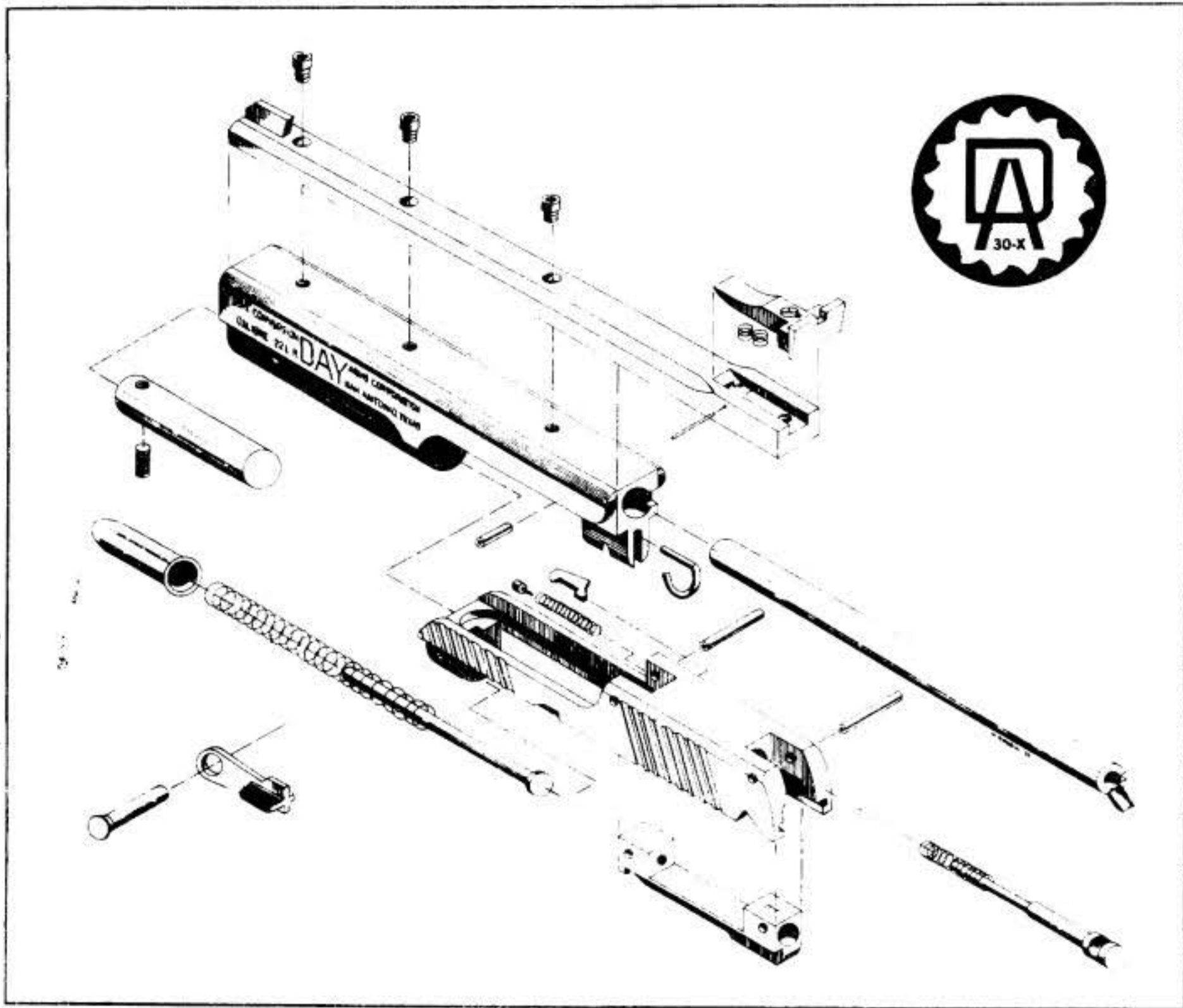


DAY ARMS CORPORATION

2412 S. W. Loop 410

SAN ANTONIO, TEXAS 78227 • TELEPHONE (371) 674-

5220



At long last the dream of the NRA 3 gun shooter can be realized . . . Yes, a .22 caliber target conversion that fits on your favorite .45 or .38 Colt "Government Model" pistol. One that combines all the prime features that you have come to associate with the finest in target pistols invented and developed by Robert Day, president, of the Day Arms Corporation, a 2600 shooter and retired Air Force master pistolsmith, the 30-X .22 target unit is handcrafted throughout with desirable features such as heavy rib integral with the barrel, deluxe adjustable target sights, Douglas "ULTRA RIFLED" barrel and guaranteed X-ring accuracy at fifty yards.

The 30-X conversion unit slips on to your existing pistol in seconds with no modification or alteration and will not damage your receiver. It will fit your accurized pistol, both .45 and .38 conversions, .38 and .45 Gold Cup, all GI issue, .45's, Commercial Government Models and the .38 Super but **DOES NOT INCLUDE** the many remanufactured frames, the forgeries and copies, or in a rare instance the accurized Colt that has been reworked in a way or by some technique that is not general practice in the business. If the frame dimensions have been changed radically, custom fitting is available. The slide must be manually locked to the rear after the last shot, otherwise the safeties and trigger mechanisms of your pistol function normally. The unit can be readily installed, or re-

moved in seconds without loss of accuracy or change of zero.

The specifications are as follows: TYPE OF ACTION: straight blow back. BARREL HOUSING: Constructed of 6061-T6 Aluminum alloy with a tensile strength of 45,000 PSI. Mounted to the frame in a stationary manner with slide stop pin. BARREL LINER: 6 inch Douglas premium grade "ULTRA-RIFLED" barrel mounted in the barrel housing (see drawing). SIGHTS: Heavy rib type with deluxe adjustable rear and undercut blade front, with a radius of 8 1/4 inches. Rib extends back over slide. SLIDE: Constructed of 6061-T6 aluminum alloy with a certified tensile strength of 45,000 PSI. Slide houses breech block which is constructed of E-4130 heat treated steel with certified tensile strength of 146,000 PSI. EXTRACTION: As with the time proven system employed with virtually all .22 target pistols

MAGAZINE: *COLT ACE - 2EA.*

BARREL WEIGHTS: inserted in barrel housing at the front, can be altered to the shooters specifications.

The 30-X .22 Target conversion unit is completely mailable; no red tape. Price \$300⁰⁰ post paid (Texas residents add sales tax).

DAY ARMS CORPORATION

• SAN ANTONIO, TEXAS 78227

DEAR FELLOW SHOOTER

THANK YOU FOR PURCHASING THE NEW 1997 MODEL DAY 30-X 22 CAL TARGET CONVERSION UNIT FOR THE 1911 GOVERNMENT MODEL COLT 45 ACP PISTOL. EVERY EFFORT HAS BEEN MADE TO DESIGN THIS UNIT TO BE A UNIVERSAL FIT ON YOUR 45 OR 38 SUPER PISTOL MANUFACTURED BEFORE THE 1980 SERIES. WITH A SMALL MODIFICATION IT CAN BE MADE TO FUNCTION ON THE 1980 SERIES AS WELL. ALSO IT WILL FIT MOST ACCURIZED PISTOLS AND THE GOLD CUPS. IT MAY FUNCTION ON SOME OF THE COLT COPIES SUCH AS NORINCO, AUTO ORDINANCE, RANDALL, SPRINGFIELD, ETC. BUT I MAKE NO CLAIM THAT IT WILL AND SHOULD YOU TRY YOU ARE "ON YOUR OWN"

LET ME STRESS THIS POINT. I HAVE NOT FOUND ANY COPY THAT CONSISTANTLY MEETS COLTS SPECIFICATIONS AND TOLLERANCES. THE COMMANDER, OFFICERS, OR THE COMPACT TYPES, WHILE FINE GUNS, ARE GENERALY NOT USED IN PRECISION TARGET SHOOTING SO NO ATTEMPT HAS BEEN MADE TO PRODUCE A UNIT FOR THEM. THE OLD COLT PRODUCED FROM 1911 TO DATE IS A REMARKABLE PIECE OF ORDINANCE. I AM GRATEFUL FOR THE OPORTUNITY TO ENHANCE THE USEFULLNESS OF IT IN MY SMALL WAY.

NOW LETS MAKE A WONDERFULLY ACCURATE 22 CAL TARGET PISTOL OUT OF THE OLD WAR HORSE. YOUR UNIT CONSISTS IF THREE BASIC PARTS, THE BARREL AND SIGHT ASSEMBLY, THE SLIDE ASSEMBLY, AND THE MAGAZINE.

THE FULLY ADJUSTABLE REAR SIGHT AND STEEL RIB WITH FRONT SIGHT ARE MADE BY ME AS ARE THE WINDAGE AND ELEVATION SCREWS. THE BLADE AND LEAF ARE FROM 6061T6 ALUMINUM EXTRUSIONS. SCREWS ARE HEAT TREATED. THE BARREL HOUSING IS AN ALUMINUM EXTRUSION AS IS THE SLIDE HOUSING. BOTH ARE 6061T6. THE BARREL IS TURNED FROM DOUGLAS PREMIUM BARREL STOCK WITH THE FEEDING RAMP SILVER SOLDERED IN PLACE THEN MACHINED. THE SLIDE HOUSING CONTAINS A HEAT TREATED BREECH BLOCK OF 4130 AIRCRAFT QUALITY STEEL AND THE FIRING PIN AND SPRING. THE MAGAZINE IS A COLT 22 ACE. YOU WILL RECIEVE THE UNIT ASSEMBLED AND READY TO INSTALL ON YOUR FRAME. NOTE THAT THERE WILL BE A SMALL PIECE OF STYROFOAM LOCATED AT THE UNDERSIDE OF THE SLIDE THAT IS HOLDING THE EJECTOR IN PLACE. THIS MUST BE REMOVED. THIS NEW EJECTION SYSTEM WAS DESIGNED TO ALLOW THE USE OF THE COLT ACE MAGAZINE. FOR THOSE PEOPLE THAT HAVE OLDER UNITS AND WISH TO UPDATE THEM WE CAN MAKE THE NECESSARY MODIFICATIONS. CALL FOR CURRENT PRICEING. A RECOIL BUFFER MUST BE USED. IT IS A "OO"FAWCET WASHER INSTALLED ON THE RECOIL SPRING GUIDE BETWEEN THE HEAD OF THE GUIDE AND THE SPRING. IT WILL PREVENT METAL TO METAL CONTACT OF THE SLIDE AND RECIEVER WHICH CAN INDUCE SLIDE BREAKAGE. YOU SHOULD REPLACE THE BUFFER WHEN YOU DETECT OBVIOUS DETERIORATION. THEY COST NEXT TO NOTHING, ARE AVAILABLE AT ANY HARDWARE STORE , AND WILL INSURE A LONG HAPPY LIFE FOR YOUR UNIT. ALL YOUR SAFETIES WILL FUNCTION NORMALY.

INSTALLATION.

REMOVE THE 45 TOP HALF FROM YOUR FRAME. REMOVE AND DISCARD THE PIECE OF STYROFOAM (IT WAS PLACED THERE ONLY TO SHOW THE CORRECT POSITION OF THE EJECTOR). THE EJECTOR MUST BE IN THIS POSITION WHEN YOU MATE THE UNIT TO THE FRAME. HOLDING THE FRAME AND THE UNIT INVERTED SLIDE THE UNIT ON TO THE FRAME WHILE CANTING BOTH PARTS AWAY FROM YOU SO THAT THE EJECTOR WILL STAY IN THE PROPER POSITION. YOU MAY FIND IT NECESSARY TO "JIGGLE" THE ASSEMBLY SLIGHTLY AS THE PARTS MAY TRY TO HANG UP AS THE BOTTOM BARREL LUG GOES INTO THE THE FRAME DEPENDING ON HOW TIGHT IT FITS IN THAT AREA. IT WILL STOP AGAIN AS THE FOREND OF THE FRAME AND SPRING TRY TO MATE. AT THIS TIME TURN THE GUN RIGHT SIDE UP AND PRESS THE MUZZLE FIRMLY AGAINST A SOLID OBJECT. THIS WILL FLEX THE SPRING SO THAT THE SO THAT THE UNIT CAN SLIDE INTO PLACE. POSITION THE SLIDE STOP (FURNISHED WITH THE UNIT, YOU DO NOT USE THE COLT PART) ON THE FRAME. THE PLUNGER WILL HOLD IT IN PLACE WHILE YOU INSTALL THE SLIDE STOP PIN. THE PIN MUST FLEX THE SPRING THAT IS INSTALLED IN THE LUG WHICH IN TURN PULLS THE BARREL FIRMLY AGAINST THE FRAME. I HOLD THE REAR OF THE SLIDE STOP WITH MY LEFT THUMB WHILE STRIKING THE PIN WITH A MALLET. THIS MAY EXPLAIN WHY MY THUMB NAIL SOMETIMES TURNS BLUE SO BE CAREFUL. CHECK THE SLIDE FOR FREEDOM OF MOVEMENT, LOAD YOUR MAGAZINE, AND SHOOT ONLY X'S.

THIS MAY SOUND COMPLICATED BUT ONCE YOU HAVE DONE IT A FEW TIMES ITS REAL EASY. AND REMEMBER I AM ALWAYS OPEN TO SUGGESTIONS OR QUESTIONS ABOUT ANY ASPECT OF THE UNIT OR THE INSTRUCTIONS. I LIKE FEEDBACK FROM YOU FOLKS.

BOB DAY