



SINCE 1930

2009 PRODUCT CATALOG

OPTICS • RINGS • BASES

DEAR VALUED CUSTOMER,

It is with great pride that we announce the return of Weaver® Optics back into the ATK family of brands. Our company has a solid history with the Weaver brand and we are pleased to add Weaver optics back into a winning lineup that includes such respected brands as Federal Premium® Ammunition, Speer™, RCBS®, Champion® Traps & Targets, Outers® gun care among others. With this acquisition, Weaver Optics is also reunited with the Weaver Rings & Bases division; making it a complete package for serving the avid outdoor enthusiast. If you have been a Weaver customer—of either rings and bases or optics—we thank you for your trust and support over the years. If you have yet to try the Weaver brand, we encourage you to do so and believe you'll discover what millions of other hunters and shooters already know; that for more than 78 years, Weaver has produced quality, affordable optics and mounts that enhance any outdoor adventure. This commitment to quality products and preserving our hunting heritage is at the core of Weaver's legacy and one we are honored to continue.

Wishing you the
best afield,

Mark DeYoung
President,
ATK Commercial Products



CONTENTS



SECTION	PAGE
INTRODUCTION	2
CONTENTS	3
SCOPES	
Super Slam™	4-5
Grand Slam®	6-7
Tactical	8-9
Classic® Extreme	10-11
Classic V-Series™	12-13
Classic K-Series™	14
Classic™ Rimfire	15
T-Series™	16
40/44 Series™	17
Classic™ Handgun	18
Accessories	19
BINOCULARS	
Super Slam™	20-21
Grand Slam®	22
OPTICS WARRANTY	23
RINGS & BASES	
Grand Slam Top Mount	26
Grand Slam Dovetail	27
Quad Lock Rings	28
Muzzleloader/.22 Tip Off	29
Detachable Top Mount	30-31
Tactical	32
Shotgun/Pistol Mounting Systems	33
CHARTS	
Simmons Rings	34
Top Mount Aluminum	34
Mount Charts	35-43

NEW



NEW

MODEL	DESCRIPTION POWER, OBJECTIVE	SPECIAL FEATURES	FINISH	RETICLE	EXIT PUPIL (MM)	FIELD OF VIEW FT @ 100 YDS/M @ 100M	EYE RELIEF (IN./MM)	LENGTH (IN./MM)	CLICK VALUE IN. @ 100 YDS/M @ 100M	ADJUSTMENT RANGE # OF CLICKS	WEIGHT (OZ./G)
800310	2-10 x 42		Matte	Dual-X	10.53/3.82	49.45/9.9	4.09/3.94	13.1/333	1/4 / 7	240	23.0/650
800311	2-10 x 42		Silver	Dual-X	10.53/3.82	49.45/9.9	4.09/3.94	13.1/333	1/4 / 7	240	23.0/650
800315	2-10 x 42		Matte	EBX	10.53/3.82	49.45/9.9	4.09/3.94	13.1/333	1/4 / 7	240	23.0/650
800320	2-10 x 50		Matte	Dual-X	10.5/4.4	48.37/9.69	4.13/3.98	13.1/333	1/4 / 7	240	24.0/680
800325	2-10 x 50		Matte	EBX	10.5/4.4	48.37/9.69	4.13/3.98	13.1/333	1/4 / 7	240	24.0/680
800330	3-15 x 42	Side Focus	Matte	Dual-X	10.5/2.34	33.28/6.7	3.98/3.94	12.9/330	1/4 / 7	200	26.5/750
800335	3-15 x 42	Side Focus	Matte	EBX	10.5/2.34	33.28/6.7	3.98/3.94	12.9/330	1/4 / 7	200	26.5/750
800340	3-15 x 50	Side Focus	Matte	Dual-X	10.52/3.32	33.97/6.81	3.98/3.94	12.9/330	1/4 / 7	160	27.5/780
800341	3-15 x 50	Side Focus	Silver	Dual-X	10.52/3.32	33.97/6.81	3.98/3.94	12.9/330	1/4 / 7	160	27.5/780
800345	3-15 x 50	Side Focus	Matte	EBX	10.52/3.32	33.97/6.81	3.98/3.94	12.9/330	1/4 / 7	160	27.5/780
800348	3-15 x 50	Side Focus	Matte	ill. Duplex	10.52/3.32	33.97/6.81	3.98/3.94	12.9/330	1/4 / 7	160	27.5/780
800350	4-20 x 50	Side Focus	Matte	Dual-X	10.5/2.44	24.56/4.92	3.98/3.94	12.9/330	1/8 / 3.5	272	27.5/780
800352	4-20 x 50	Side Focus	Matte	Fine-X w/Dot	10.5/2.44	24.56/4.92	3.98/3.94	12.9/330	1/8 / 3.5	272	27.5/780
800355	4-20 x 50	Side Focus	Matte	EBX	10.5/2.44	24.56/4.92	3.98/3.94	12.9/330	1/8 / 3.5	272	27.5/780



2-10 X 50 | 800325



2-10 X 42 | 800315

SUPER SLAM™



RIFLESCOPES



A NEW LOOK AT PREMIUM PERFORMANCE

Welcome to the latest evolution of optics—the new Super Slam™ series from Weaver®. Engineered to meet the strict standards of the legendary Weaver name, the new Super Slam scopes are loaded with all the latest technological advances of modern high-end optics. If you know and trust the Weaver name, you'll be impressed with this new line of premier riflescopes designed for the serious big game hunter and shooter.



Features & Benefits

- Powerful 5x magnification
- Fully multi-coated lenses with extra hard coating on exterior lenses
- Expanded reticle offerings including Weaver's proprietary EBX™ ballistic reticle
- Waterproof / shockproof / fogproof
- Side focus parallax adjustment (except for 2-10 models)
- 3-position, pull-up turrets (no caps to lose)
- Argon purged tubes to eliminate internal fogging
- 1" tube, one-piece construction
- 3-point erector system with improved spring design

SUPER SLAM™—EURO STYLE

Get the power and technology of the new Super Slam™ series in a 30mm tube design. Containing all the same cutting-edge technology and advancements as the 1" tube Super Slams, the Super Slam Euro Style series boast a more robust tube dimension, additional magnification ranges and illuminated reticles.

Features & Benefits

- Same great features as the 1" tube Super Slams
- 30mm tubes (Euro Style)
- First focal plane reticles
- Expanded reticle offerings
- Side focus parallax adjustment (except for 1.5-5 model)





GRAND SLAM®

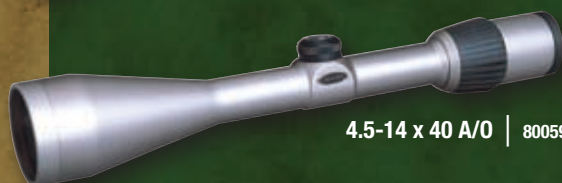
RIFLESCOPES



6-20 X 40 A/O | 800476



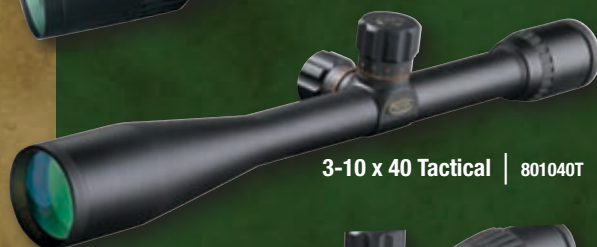
1.5-5 x 32 | 800471



4.5-14 x 40 A/O | 800590



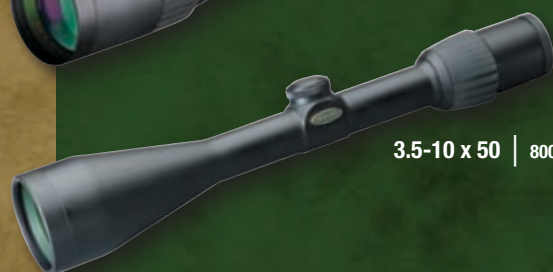
3.5-10 x 50 | 800474



3-10 x 40 Tactical | 801040T



4.5-14 x 40 A/O Tactical | 800475T



3.5-10 x 50 | 800474

BUILT TO BE THE BEST

Weaver's award-winning Grand Slam® is consistently rated as one of the best all-around scopes available. With fully multi-coated Japanese glass yielding 94% light transmission, edge-to-edge clarity, reduced glare and incredible image brightness, it's easy to see why the Grand Slam series is the perfect variable power scope for all low light conditions. And with our new reticle offerings, shooters everywhere have additional choices for the woods, swamps and open plains.

Features & Benefits

- Fully multi-coated lenses for optimum edge-to-edge clarity
- Nitrogen purged tubes to eliminate internal fogging
- One-piece construction
- Waterproof / fogproof / shockproof
- New Ballistic-X reticle offering
- Micro-trac® adjustment system

Dual-X



Fine Crosshair
¼ MOA Dot



Varminter



Mil Dot



Ballistic-X





MODEL	DESCRIPTION POWER, OBJECTIVE	SPECIAL FEATURES	FINISH	RETICLE	EXIT PUPIL (MM)	FIELD OF VIEW FT @ 100 YDS/M @ 100M	EYE RELIEF (IN./MM)	LENGTH (IN./MM)	CLICK VALUE IN. @ 100 YDS/M @ 100M	ADJUSTMENT RANGE IN. @ 100 YDS/M @ 100M	WEIGHT (OZ./G)
800471	1.5-5 x 32		Matte	Dual-X	17.4-6.2	71-21/23.6-7.0	3.3/84	10.3/262	1/4 / 7	120/3.3	11.5/326
NEW 800472	3-10 x 40		Matte	Ballistic-X	12.6-4	35-11.3/11.7-3.8	3.5/89	11.9/302	1/4 / 7	70/1.9	13/369
800473	3-10 x 40		Matte	Dual-X	12.6-4	35-11.3/11.7-3.8	3.5/89	11.9/302	1/4 / 7	70/1.9	13/369
800588	3-10 x 40		Silver	Dual-X	12.6-4	35-11.3/11.7-3.8	3.5/89	11.9/302	1/4 / 7	70/1.9	13/369
800474	3.5-10 x 50		Matte	Dual-X	11.5-4.5	23.6-10.9/7.9-3.6	3.5/89	12.8/325	1/4 / 7	65/1.8	16.3/462
800589	3.5-10 x 50		Silver	Dual-X	11.5-4.5	23.6-10.9/7.9-3.6	3.5/89	12.8/325	1/4 / 7	65/1.8	16.3/462
800475	4.5-14 x 40	AO	Matte	Dual-X	8.8-2.6	22.5-10.5/7.5-3.5	3.5/89	14.3/363	1/4 / 7	50/1.4	16.5/468
NEW 800475T	4.5-14 x 40	AO	Matte	Mil-Dot	8.8-2.6	22.5-10.5/7.5-3.5	3.5/89	14.3/363	1/4 / 7	50/1.4	16.5/468
800477	4.5-14 x 40	AO	Matte	Ballistic-X	8.8-2.6	22.5-10.5/7.5-3.5	3.5/89	14.3/363	1/4 / 7	50/1.4	16.5/468
800590	4.5-14 x 40	AO	Silver	Dual-X	8.8-2.6	22.5-10.5/7.5-3.5	3.5/89	14.3/363	1/4 / 7	50/1.4	16.5/468
800469	6-20 x 40	AO	Matte	Varminter	6.6-2	16.5-5.3/5.5-1.8	3/76	14.3/363	1/8 / 3.5	40/1.1	17.8/505
800476	6-20 x 40	AO	Matte	F/C Dot	6.6-2	16.5-5.3/5.5-1.8	3/76	14.3/363	1/8 / 3.5	40/1.1	17.8/505
NEW 800478	6-20 x 40	AO	Matte	Ballistic-X	6.6-2	16.5-5.3/5.5-1.8	3/76	14.3/363	1/8 / 3.5	40/1.1	17.8/505
801040T	3-10 x 40	Tac. Tur.	Matte	Mil-Dot	4	9.3/3.1	4/102	14/356	1/4 / 7	60/1.7	16.6/471



MODEL	DESCRIPTION	SPECIAL	FINISH	RETICLE	EXIT PUPIL	FIELD OF VIEW	EYE RELIEF	LENGTH	CLICK VALUE	ADJUSTMENT RANGE	WEIGHT
	POWER, OBJECTIVE	FEATURES			(MM)	FT @ 100 YDS/M @ 100M	(IN./MM)	(IN./MM)	IN. @ 100 YDS/M @ 100M	IN. @ 100 YDS/M @ 100M	(OZ./G)

Technical Data Coming Soon

TACTICAL



RIFLESCOPES

NEW



4-20 x 50 | 800360



Mil Dot



SERIOUS GLASS FOR SERIOUS SITUATIONS

For those involved in the serious effort of protecting life and liberty—both here and abroad—Weaver® is proud to offer rugged riflescopes designed specifically for tactical applications. As part of the new Super Slam™ series, these tactical scopes are manufactured to the strictest tolerances in order to perform in the harshest environments.

Features & Benefits

- Powerful 5x magnification
- Fully multi-coated lenses w/ extra hard coating on exterior lenses
- First focal plane reticles
- Waterproof / shockproof / fogproof
- Side focus parallax adjustment
- Reset-to-zero turrets (no caps to lose)
- Argon purged tubes to eliminate internal fogging
- One-piece construction
- 30mm tubes
- Mil Dot reticles



CLASSIC[®] EXTREME

RIFLESCOPES



2.5-10 x 50 SF | 800704



2.5-10 x 56 SF | 800706



1.5-4.5 x 24 | 800702

illuminated Dual-X



illuminated
German #4



EXTREMISTS WELCOME

Time of day, weather and field conditions don't stand a chance with the Classic[®] Extreme.

1/4 MOA, audible push-pull windage and elevation adjustments for pinpoint, precise accuracy.

Delivering 95% light transmission at 550nm through fully multi-coated optics, the Classic Extreme's exceptional optical design makes it the ultimate scope for spotting brown game in low light.

Four inches of eye relief makes aiming from awkward positions easier, even when shooting up or down hill. And the one-piece, fogproof, waterproof and shockproof 30mm tube provides more windage and elevation travel – critical for those tough, extremely long range shots.

Other features include oversized, push/pull resettable windage and elevation dials, fast-focus eyepiece, internally-ruled objective assembly for eliminating stray light, side-parallax adjustments on all 2.5-10 models, and your choice of illuminated 1 MOA Dot Dual-X and illuminated German #4 reticles. It all comes together to give the edge you need to make that once-in-a-lifetime shot even in the worst weather and lowest light.



MODEL	DESCRIPTION POWER, OBJECTIVE	SPECIAL FEATURES	FINISH	RETICLE	EXIT PUPIL (MM)	FIELD OF VIEW FT @ 100 YDS/M @ 100M	EYE RELIEF (IN./MM)	LENGTH (IN./MM)	CLICK VALUE IN. @ 100 YDS/M @ 100M	ADJUSTMENT RANGE IN. @ 100 YDS/M @ 100M	WEIGHT (OZ./G)
800701	1.5-4.5 x 24		Matte	ill. German #4	16-5.3	65.6-22.2/21.8-7.4	4/102	9.7/246	1/4 / 7	50/1.4	15.6/442
800702	1.5-4.5 x 24		Matte	ill. Dual-X	16-5.3	65.6-22.2/21.8-7.4	4/102	9.7 9.7/246	1/4 / 7	50/1.4	15.6/442
800703	2.5-10 x 50	Side Focus	Matte	ill. German #4	20-5.2	36.7-10.1/12.2-3.4	4/102	12.9/328	1/4 / 7	50/1.4	24/680
800704	2.5-10 x 50	Side Focus	Matte	ill. Dual-X	20-5.2	36.7-10.1/12.2-3.4	4/102	12.9/328	1/4 / 7	50/1.4	24/680
800705	2.5-10 x 56	Side Focus	Matte	ill. German #4	22.4-5.6	36.7-10.1/12.2-3.4	4/102	13.8/351	1/4 / 7	50/1.4	26/737
800706	2.5-10 x 56	Side Focus	Matte	ill. Dual-X	22.4-5.6	36.7-10.1/12.2-3.4	4/102	13.8/351	1/4 / 7	50/1.4	26/737



MODEL	DESCRIPTION POWER, OBJECTIVE	SPECIAL FEATURES	FINISH	RETICLE	EXIT PUPIL (MM)	FIELD OF VIEW FT @ 100 YDS/M @ 100M	EYE RELIEF (IN./MM)	LENGTH (IN./MM)	CLICK VALUE IN. @ 100 YDS/M @ 100M	ADJUSTMENT RANGE IN. @ 100 YDS/M @ 100M	WEIGHT (OZ./G)
849400	1-3 x 20		Matte	Dual-X	15-6.6	87-30.8/29-102	3.1-3.1/79-79	9.1/231	1/4 / 7	120/3.3	8.5/241
849399	2-7 x 32		Matte	Dual-X	15-4.6	45-15/15-5.0	4.5-3.5/114-89	10.9/277	1/4 / 7	70/1.9	10/284
849402	3-9 x 38		Matte	Dual-X	12.7-4.2	34-11.4/11.3-3.8	3.3-3/84-76	12.3/312	1/4 / 7	70/1.9	11.3/320
NEW 849403	2-10 x 38		Matte	Ballistic-X	19-3.8	38-9.6/12.5-3.2	3.3-3/84-76	12.5/317	1/4 / 7	70/1.9	11/312
849406	2-10 x 38		Silver	Dual-X	19-3.8	38-9.6/12.5-3.2	3.3-3/84-76	12.5/317	1/4 / 7	70/1.9	11/312
849405	2-10 x 38		Matte	Dual-X	19-3.8	38-9.6/12.5-3.2	3.3-3/84-76	12.5/317	1/4 / 7	70/1.9	11/312
NEW 849407	4-16 x 42	AO; STT*	Matte	Ballistic-X	10.5-2.6	24.4-7.0/8.1-2.3	3.1-3/79-76	14/356	1/4 / 7	50/1.4	16.8/476
849410	4-16 x 42	AO; STT*	Matte	F/C Dot	10.5-2.6	24.4-7.0/8.1-2.3	3.1-3/79-76	14/356	1/4 / 7	50/1.4	16.8/476
849409	4-16 x 42	AO; STT*	Matte	F/C	10.5-2.6	24.4-7.0/8.1-2.3	3.1-3/79-76	14/356	1/4 / 7	50/1.4	16.8/476
849408	4-16 x 42	AO; STT*	Matte	Dual-X	10.5-2.6	24.4-7.0/8.1-2.3	3.1-3/79-76	14/356	1/4 / 7	50/1.4	16.8/476
NEW 849414	4-16 x 42	AO; STT	Matte	.223 Ballistic-X	10.5-2.6	24.4-7.0/8.1-2.3	3.1-3/79-76	14/356	1/4 / 7	50/1.4	16.8/476
849412	6-24 x 42	AO; STT*	Matte	Mil Dot	7-1.2	15.7-4.4/5.2-1.5	3.1-3.1/79-79	14.1/358	1/8 / 3.5	35/1.0	17.6/499
849411	6-24 x 42	AO; STT*	Matte	Varminter	7-1.2	15.7-4.4/5.2-1.5	3.1-3.1/79-79	14.1/358	1/8 / 3.5	35/1.0	17.6/499
NEW 849413	6-24 x 42	AO; STT*	Matte	Ballistic-X	7-1.2	15.7-4.4/5.2-1.5	3.1-3.1/79-79	14.1/358	1/8 / 3.5	35/1.0	17.6/499
NEW 849416	6-24 x 42	AO; STT*	Matte	.223 Ballistic-X	7-1.2	15.7-4.4/5.2-1.5	3.1-3.1/79-79	14.1/358	1/8 / 3.5	35/1.0	17.6/499

*Semi Target Turret

CLASSIC V-SERIES™

WEAVER

RIFLESCOPES



Ballistic-X

Dual-X

Fine
CrosshairFine Crosshair
¼ MOA Dot

Mil Dot

Varminter



VARIABILITY. RELIABILITY. DEPENDABILITY.

Built to deliver a large field of view, generous eye relief and fast power change adjustments, the Classic V-Series™ is the ultimate in versatility—helping hunters spot game in early morning or late evening shadows. Weaver® also expands the Classic V-Series™ with a new collection of riflescopes for the avid hunter and shooter. These new offerings boast additional reticle options that enhance a shooter's ability to estimate distance and make the shot. For those looking for more choices in a proven line of scopes, check out the Weaver V-Series.

Features & Benefits

- Fully multi-coated lenses
- Hard coating on exterior lenses
- Nitrogen purged tubes to eliminate internal fogging
- New Ballistic-X™ reticle offering
- 1" tubes
- Waterproof / shockproof / fogproof



CLASSIC K-SERIES™

RIFLESCOPES

SET TO BE SIMPLE, ACCURATE AND DURABLE

Nothing beats long-term durability and ease of use like a Classic K-Series™ scope.

Crafted from a one-piece aircraft-grade aluminum tube that holds its lenses in perfect permanent alignment, the Classic K-Series™ fixed power scopes are solidly built to take heavy recoil punishment and hold zero to 10,000 rounds from a .375 H&H magnum rifle.

And because Classic K-Series™ fixed scopes present a consistent field of view that's perfect for open field hunting, they are among the easiest scopes any instinctive shooter will ever use regardless of the range.

Classic K-Series™ fully multi-coated Japanese optics dramatically increase image brightness and contrast while helping eliminate glare.

And as you expect with all Weaver products, Classic K-Series™ riflescopes are fully waterproof, shockproof and fogproof.



4 x 38 | 849415

MODEL	DESCRIPTION POWER, OBJECTIVE	SPECIAL FEATURES	FINISH	RETICLE	EXIT PUPIL (MM)	FIELD OF VIEW FT @ 100 YDS/M @ 100M	EYE RELIEF (IN./MM)	LENGTH (IN./MM)	CLICK VALUE (MOA) IN. @ 100 YDS/M @ 100M	ADJUSTMENT RANGE IN. @ 100 YDS/M @ 100M	WEIGHT (OZ./G)
849415	4 x 38		Matte	Dual-X	9.5	23.1/7.7	3.2/8	11.5/292	1/4 / 7	120/3.3	9.9/281
849418	6 x 38		Matte	Dual-X	6.3	18.4/6.2	3.2/8	11.6/295	1/4 / 7	80/2.2	9.8/278



CLASSIC™ RIMFIRE



RIFLESCOPES

SMALL CALIBER, HIGH PERFORMANCE

Weaver takes rimfire riflescopes as seriously as its big game brethren. Every Classic™ Rimfire scope incorporates many of the exact same features found on Weaver's top-of-the-line models.

Designed to bring out the best in rimfire and adult air rifles, the Classic™ Rimfire comes in variable and fixed power models – with fully multi-coated, non-glare optics that produce edge-sharp, low-light brightness, even in the duskiest of conditions.

All scopes feature rugged, aircraft-grade one-piece aluminum construction. Waterproof, fogproof and shockproof, the Classic™ Rimfire is designed to withstand the multi-directional recoil from the heaviest spring-loaded adult airguns.

Parallax is set at 50 yards for ideal rimfire target acquisition and accuracy.



2.5-7 x 28 | 849431

Dual-X

MODEL	DESCRIPTION POWER, OBJECTIVE	SPECIAL FEATURES	FINISH	RETICLE	EXIT PUPIL (MM)	FIELD OF VIEW FT @ 100 YDS/M @ 100M	EYE RELIEF (IN./MM)	LENGTH (IN./MM)	CLICK VALUE IN. @ 100 YDS/M @ 100M	ADJUSTMENT RANGE IN. @ 100 YDS/M @ 100M	WEIGHT (OZ./G)
849430	4 x 28		Matte	Dual-X	7	21.8/7.3	3.3/84	10.3/262	1/4 / 7	80/2.2	8.5/241
849431	2.5 - 7 x 28		Matte	Dual-X	11.2-4	41.3-15.7/13.8-5.2	3.7/94	11.5/292	1/4 / 7	80/2.2	9.75/278
849432	2.5 - 7 x 28		Silver	Dual-X	11.2-4	41.3-15.7/13.8-5.2	3.7/94	11.5/292	1/4 / 7	80/2.2	9.75/278
849398	3 - 9 x 32	Adj. Obj.	Matte	Dual-X	10.6-3.5	37-13/12.3-4.3	3.7/94	11.3/287	1/4 / 7	60/1.7	12/340





T-SERIES™

RIFLESCOPES

THE TARGET AND VARMINT TERMINATOR

Whether it's putting repeated rounds into the same hole or picking off small varmints at hundreds of yards – Weaver's T-Series™ fixed riflescopes give you the eighth MOA accuracy you need to be dead on, shot after shot.

Each T-Series™ scope features the incredibly accurate QuadZero™ adjustment system that gives you more accurate, completely independent windage and elevation control.

An adjustable objective provides parallax-free shooting – so no matter how off-center your eyepiece-to-eye alignment is, your point of impact won't be affected.

Fully multi-coated Japanese optics increase brightness to 94% at 550mm. These superior optics punch up the contrast, eliminate glare and deliver unparalleled clarity.

Every T-Series™ scope comes with traditional eyepiece focus, a sunshade, screw-in metal lens caps and an extra pair of oversized benchrest adjustment knobs.



MODEL	DESCRIPTION POWER, OBJECTIVE	SPECIAL FEATURES	FINISH	RETICLE	EXIT PUPIL (MM)	FIELD OF VIEW FT @ 100 YDS/M @ 100M	EYE RELIEF (IN./MM)	LENGTH (IN./MM)	CLICK VALUE IN. @ 100 YDS/M @ 100M	ADJUSTMENT RANGE IN. @ 100 YDS/M @ 100M	WEIGHT (OZ./G)
849970	36 x 40	A0/SunShade	Matte	F/C	1.16	3/1	3/76	15.4/391	1/8 / 3.5	60/1.7	17/487
849981	36 x 40	A0/SunShade	Silver	F/C	1.16	3/1	3/76	15.4/391	1/8 / 3.5	60/1.7	17/487
849974	36 x 40	A0/SunShade	Matte	1/8 MOA Dot	1.16	3/1	3/76	15.4/391	1/8 / 3.5	60/1.7	17/487
849969	36 x 40	A0/SunShade	Silver	1/8 MOA Dot	1.16	3/1	3/76	15.4/391	1/8 / 3.5	60/1.7	17/487
849976	24 x 40	A0/SunShade	Gloss	1/8 MOA Dot	1.6	4.4/1.5	3/76	15.4/391	1/8 / 3.5	60/1.7	16/454

40/44 SERIES™



RIFLESCOPES

GREAT GLASS AT A GREAT VALUE

When it comes to value and performance, Weaver® introduces a new line for the cost-conscious shooter. The 40/44 Series™ boasts an increase in scope offerings all with either 40mm or 44mm objectives. This new line of riflescopes include a variety of magnification ranges and increased reticle choices while maintaining the same trusted performance found in each and every Weaver optic.

Features & Benefits

- A broad variety of new riflescope choices
- Fully multi-coated lenses
- New Ballistic-X reticle offering
- Waterproof / shockproof / fogproof
- One-piece tube construction
- Aspherical lens system (some models)

NEW

4-12 x 44 | 849540

3-9 x 40 | 849511



Dual-X

Ballistic-X

Varminter



NEW

MODEL	DESCRIPTION POWER, OBJECTIVE	SPECIAL FINISH FEATURES	RETICLE	EXIT PUPIL (MM)	FIELD OF VIEW FT @ 100 YDS/M @ 100M	EYE RELIEF (IN./MM)	LENGTH (IN./MM)	CLICK VALUE IN. @ 100 YDS/M @ 100M	ADJUSTMENT RANGE IN. @ 100 YDS/M @ 100M	WEIGHT (OZ./G)
849507	3-9 x 40	Matte	Dual-X	13-4.4	33.91-11.26	3.5/89	12.2/310	1/4 / 7	60/1.7	14.2
849508	3-9 x 40	Matte	Ballistic-X	13-4.4	33.91-11.26	3.5/89	12.2/310	1/4 / 7	60/1.7	14.2
849511	3-9 x 40	Matte	Dual-X	13-4.4	33.91-11.26	3.5/89	12.2/310	1/4 / 7	60/1.7	14.2
849512	3-9 x 40	Matte	Ballistic-X	13-4.4	33.91-11.26	3.5/89	12.2/310	1/4 / 7	60/1.7	14.2
849520	2.8-10 x 44	Aspherical Matte	Dual-X	15.77-4.4	39.351-12.13	3.3/84	11.42/290	1/4 / 7	60/1.7	16.75
849521	2.8-10 x 44	Aspherical Silver	Dual-X	15.77-4.4	39.351-12.13	3.3/84	11.42/290	1/4 / 7	60/1.7	16.75
849530	3-10 x 44	Matte	Dual-X	14.66-4.4	33.51-10.3	3/76	12.1/307	1/4 / 7	60/1.7	13.93
849531	3-10 x 44	Silver	Dual-X	14.66-4.4	33.51-10.3	3/76	12.1/307	1/4 / 7	60/1.7	13.93
849532	3-10 x 44	Matte	Ballistic-X	14.66-4.4	33.51-10.3	3/76	12.1/307	1/4 / 7	60/1.7	13.93
849525	3.8-12 x 44	Aspherical Matte	Dual-X	11.58-3.67	29.84-9.95	3.3/84	12.95/329	1/4 / 7	60/1.7	21.52
849527	3.8-12 x 44	Aspherical Matte	Varminter	11.58-3.67	29.84-9.95	3.3/84	12.95/329	1/4 / 7	60/1.7	21.52
849540	4-12 x 44	A0 Matte	Dual-X	11-3.66	23.03-7.94	3/76	12.65/321	1/4 / 7	60/1.7	17
849541	4-12 x 44	A0 Silver	Dual-X	11-3.66	23.03-7.94	3/76	12.65/321	1/4 / 7	60/1.7	17
849542	4-12 x 44	A0 Matte	Ballistic-X	11-3.66	23.03-7.94	3/76	12.65/321	1/4 / 7	60/1.7	17
849550	6.5-20 x 44	A0 Matte	Dual-X	6.77-2.2	15.53-4.45	3/76	14.1/358	1/8 / 3.5	40/1.1	20.46
849552	6.5-20 x 44	A0 Matte	Varminter	6.77-2.2	15.53-4.45	3/76	14.1/358	1/8 / 3.5	40/1.1	20.46



CLASSIC™ HANDGUN

SCOPES

MAGNUM FORCE RELIABILITY, HIGH IMPACT ACCURACY

Handguns demand a scope that is built to withstand the brutal, shot-after-shot pounding from today's most powerful revolvers and single-shot pistols. Designed for the tremendous recoil of 1,000 rounds from a .454 Casull® revolver, Weaver's Classic™ Handgun scopes deliver the goods on rugged, reliable, repeatable accuracy.

Fully multi-coated Japanese optics increase brightness, eliminate glare and transmit crisp, clear, edge-to-edge images.

Featuring a 50-yard parallax setting, the fixed power Classic scopes provide unlimited eye relief.



4 x 28 | 849425

Dual-X



2.5-8 x 28 | 849429

MODEL	DESCRIPTION POWER, OBJECTIVE	SPECIAL FEATURES	FINISH	RETICLE	EXIT PUPIL (MM)	FIELD OF VIEW FT @ 100 YDS/M @ 100M	EYE RELIEF (IN./MM)	LENGTH (IN./MM)	CLICK VALUE IN. @ 100 YDS/M @ 100M	ADJUSTMENT RANGE IN. @ 100 YDS/M @ 100M	WEIGHT (OZ./G)
849427	1.5 - 4 x 20		Gloss	Dual-X	13.3-5.5	15.5-6.5/5.5-2.2	14-22/ 356-559	9/229	1/4 / 7	60/1.7	8.2/232
849429	2.5-8 x 28		Matte	Dual-X	11.2-3.5	12.2-3.9/4.1-1.3	16-24/ 406-61	9.4/239	1/4 / 7	70/1.4	9.1/258
849446	2.5-8 x 28		Silver	Dual-X	11.2-3.5	12.2-3.9/4.1-1.3	16-24/ 406-610	9.4/239	1/4 / 7	70/1.4	9.1/258
849424	2 x 28		Silver	Dual-X	16	21/7	14-29 / 356-737	8.4/213	1/4 / 7	120/3.3	6.7/190
849425	4 x 28		Gloss	Dual-X	7	8.3/2.8	12-18 / 305-457	8.5/2.6	1/4 / 7	100/2.8	6.4/181

ACCESSORIES

WEAVER

OPTICS GEAR

CLEANING CLOTH

Designed to gently remove dust, dirt and debris from your lenses, this cloth is a valuable tool in the care and ongoing performance of your quality Weaver glass.



Features & Benefits

- Large 6" x 6", micro-fiber cloth
- Embedded with an anti-fog chemical compound
- Excellent for dry application cleaning of all optics
- Long life—200+ uses per cloth
- Environmentally friendly

PART NO.	DESCRIPTION	NEW
849710	Cleaning Cloths—1 Pack	
849711	Cleaning Cloths—25 ct. box	

GUNSMITH MOUNTING CENTER

Safely tackle all your gun work needs with the new Gunsmith Mounting Center from Weaver®. Whether you are mounting optics, cleaning a firearm or making repairs, the Gunsmith Mounting Center keeps your firearm stable and tools organized.



PART NO.	DESCRIPTION	NEW
849725	Gunsmith Mounting Center	

LENS CLEANING SYSTEM

Keep your quality Weaver® optics free of dirt and debris with the Weaver Lens Cleaning System.

Features & Benefits

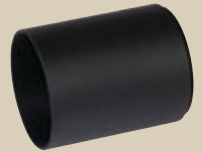
- Soft brush for removing bulk of dust and debris
- Chemically treated chamois pad cleans smudges and fingerprints



PART NO.	DESCRIPTION	NEW
849715	Lens Cleaning System	

SUPER SLAM™ SUNSHADE

Shield your shot from the distracting rays of the sun with the 4" Weaver® Sunshade. Designed for the Super Slam™ series, these sunshades block out glare regardless of sun angle.



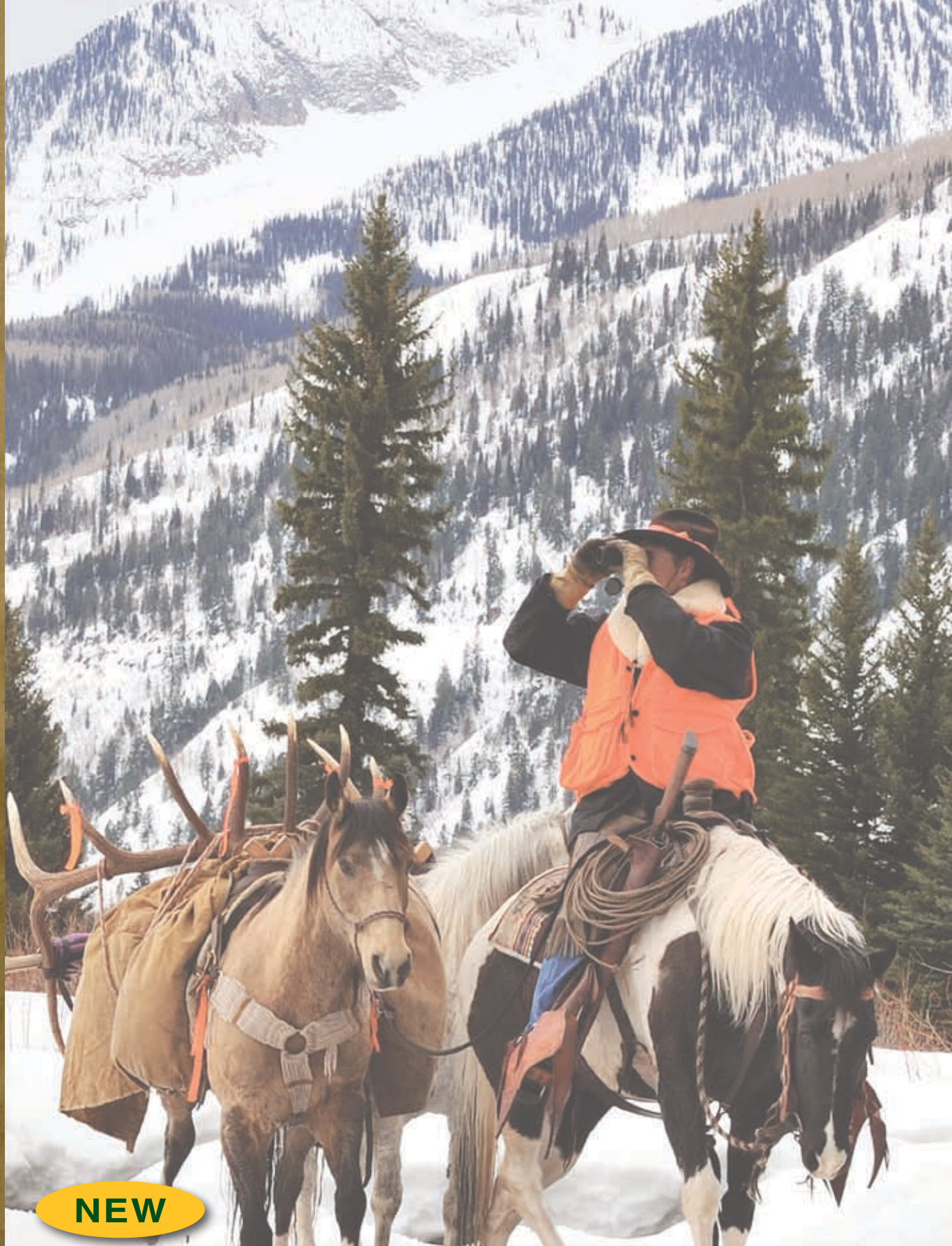
PART NO.	DESCRIPTION	NEW
846731	4" Super Slam Sunshade; 42mm—black	
846732	4" Super Slam Sunshade; 42mm—silver	
846733	4" Super Slam Sunshade; 50mm—black	
846734	4" Super Slam Sunshade; 50mm—silver	

POLAR CAPS

Protect your glass with polar caps. Lens covers stay put during stalks and pop-up quick for easy target acquisition.



CAPS	CLEAR LENS		OUTSIDE DIAMETER
PART #	PART #	SIZE	OF OBJ. (INCHES)
71001	71003	A	1.00-1.09
71091	71093	B	1.095-1.10
71221	71223	C	1.22-1.29
71301	71303	D	1.30-1.341
71381	71383	E	1.387-1.429
71431	71433	F	1.432-1.485
71501	71503	G	1.50-1.55
71551	71553	H	1.558-1.66
71611	71613	J	1.612-1.66
71671	71673	K	1.675-1.735
71761	71763	M	1.760-1.820
71841	71843	N	1.840-1.919
71961	71963	P	1.96-2.043
72101	72103	R	2.10-2.22
72221	72222	S	2.225-2.36
72411	72413	T	2.41-2.515
72571	72573	U	2.575-2.725
—	72873	W	2.870-3.000



NEW

MODEL	DESCRIPTION POWER, OBJECTIVE	OBJECT LENS	FINISH	EXIT PUPIL (MM)	FIELD OF VIEW FT @ 100 YDS/M @ 100M	EYE RELIEF (IN./MM)	OVERALL LENGTH (IN./MM)	WIDTH (IN./MM)	OVERALL HEIGHT (IN./MM)	WEIGHT (OZ./G)	PRISM
849630	8.5 X 45		Rubber Armor	5.3	341/103.9	0.73/18.5	5.63/143	2.56/65	6.30/160	—	Roof
849635	10.5 x 45		Rubber Armor	4.3	325/99.1	0.59/15	5.63/143	2.56/65	6.30/160	—	Roof

SUPER SLAM™



BINOCULARS



8.5 x 45 | 849630

NEW

THE ULTIMATE VIEWING EXPERIENCE

As the perfect partner to the Super Slam™ riflescopes, the new Super Slam binoculars up the ante with improvements every outdoor enthusiast will appreciate. From an open bridge design and magnesium body to the roof prism system with SK and BaK-4 glass, the Super Slam binoculars are sleek, rugged and ready for any outdoor adventure. Argon purged gas tubes provide crystal clear, fog-free viewing while the exterior lenses deliver scratch resistant service no matter how nasty the environment.

Features & Benefits

- Torture tested from -20° to +150° Fahrenheit
- Focus lock so preferred adjustments can be locked in for viewer
- SHR lens coating for increased light transmission
- ED glass for the ultimate in light gathering ability
- Roof prism design with SK and BaK-4 prism glass
- Waterproof / fogproof performance
- Extendable eyecups for comfortable viewing sessions
- Adaptable to tri-pods
- Binocular strap system included



GRAND SLAM®

BINOCULARS

SEE THE WORLD CLEARLY

As a flagship of the Weaver line, the Grand Slam® binoculars have gone afield in the pursuit of all types of game. And now this respected series of binoculars gets a fresh group to their proven lineup. Available in both full-size and compact designs, the new Grand Slam binos offer nitrogen purged tubes, rugged body armor and lenses that gather every bit of available light from dawn to dusk.

Features & Benefits

- Torture tested from -20° to +150° Fahrenheit
- Phase coated lenses for the ultimate in light transmission
- Roof prism design with BK-7/BaK-4 prism glass
- Waterproof / fogproof performance
- Extendable eyecups for comfortable viewing sessions
- Adaptable to tri-pods



10 x 32 | 849661

MODEL	MAGNIFICATION OBJECTION	FINISH	EXIT PUPIL (MM)	FIELD OF VIEW FT @ 100 YDS/M @ 100M	EYE RELIEF (IN./MM)	LENGTH (IN./MM)	WIDTH (IN./MM)	HEIGHT (IN./MM)	WEIGHT (OZ./G)	PRISM
849660	8 x 32	Rubber Armor	4.0	393/119.8	0.63/16.0	4.8/122	2.1/53	4.8/122	18.7/530	Roof
849661	10 x 32	Rubber Armor	3.2	314/95.7	0.59/15.0	4.8/122	2.1/53	4.8/122	18.7/530	Roof
849663	8.5 x 45	Rubber Armor	5.3	314/95.7	0.77/19.5	5.1/129	2.2/55	6.0/152	24.7/700	Roof
849664	10.5 x 45	Rubber Armor	4.3	304/92.7	0.59/15.0	5.1/129	2.2/55	5.9/150	24.7/700	Roof
849667	10 x 50	Rubber Armor	5.0	262/79.9	0.79/20.0	5.2/132	2.3/58	6.7/170	27.2/770	Roof
849668	12 x 50	Rubber Armor	4.2	251/76.5	0.61/15.5	5.2/132	2.3/58	6.6/167	26.8/760	Roof



OPTICS WARRANTY



Weaver Service and Support

Limited Lifetime Warranty: Weaver warrants this product to be free of defects in materials and workmanship for as long as it is owned by the original owner. Weaver will repair or replace (at Weavers' option) any such defective product when it is returned by the original owner with a copy of the original receipt. The repair or replacement will be without charge* except for reasonable shipping, handling and insurance charges.

THIS WARRANTY IS YOUR EXCLUSIVE WARRANTY AND REPLACES ALL OTHER WARRANTIES, EXPRESS OR IMPLIED, INCLUDING BUT NOT LIMITED TO, THE IMPLIED WARRANTIES OF MERCHANTABILITY AND FITNESS FOR A PARTICULAR PURPOSE. SOME JURISDICTIONS DO NOT ALLOW THE EXCLUSION OR LIMITATION OF EXPRESS OR IMPLIED WARRANTIES, SO THE ABOVE EXCLUSION MAY NOT APPLY TO YOU. IN THAT EVENT, SUCH WARRANTIES ARE LIMITED IN DURATION FOR AS LONG AS THE PRODUCT IS OWNED BY YOU (THE ORIGINAL OWNER). IN ADDITION, IN NO EVENT SHALL WEAVER BE LIABLE FOR COSTS IN EXCESS OF THE PRICE OF THE PRODUCT INCLUDING ANY INCIDENTAL OR CONSEQUENTIAL DAMAGES. SOME JURISDICTIONS DO NOT ALLOW LIMITATIONS ON CONSEQUENTIAL OR INCIDENTAL DAMAGES, SO THE ABOVE LIMITATION MAY NOT APPLY TO YOU. THIS WARRANTY GIVES YOU SPECIFIC LEGAL RIGHTS AND YOU MAY ALSO HAVE OTHER RIGHTS WHICH VARY FROM JURISDICTION TO JURISDICTION. THIS WARRANTY DOES NOT COVER DEFECTS OR PROBLEMS CAUSED BY ABUSE, MISUSE, NORMAL WEAR AND TEAR, OR BY IMPROPER HANDLING OR INSTALLATION, AND THE WARRANTY IS VOIDED BY UNAUTHORIZED REPAIR.

RGA Number Required: Prior to the return of any product or part, a Return Goods Authorization (RGA) number must be obtained by Weaver's Technical Service Department or by calling 800-635-7656. Each returned part or product must include a written statement detailing the nature of the claimed defect, and RGA number as well as the owner's name, address, phone number, and a copy of the original sales invoice. Packaging: If possible, ship the product in its original packaging. Please be sure to wrap the package securely and use strapping tape on the outside of the package. Send only the product to be repaired. Please do not send accessory items such as dust caps, carrying case, mounts, etc.

What to Include:

- A short note explaining the reason you are sending the product in for repair and the RGA number.
- Your daytime phone number.
- An address for returning your product to you. (No PO boxes please.)
- A money order in the amount of \$15.00 to cover shipping and handling fees.
- Photocopy of your sales receipt.

Shipping: We recommend that you ship your product to us by a tracked parcel service. We also recommend that you insure the shipment against loss. Many carriers automatically insure packages up to a certain nominal amount, typically \$100. Please check to see if the insurance provided by the carrier is adequate to cover the replacement value of your product. If you live in the United States, your product should be sent, freight prepaid, to:

Onalaska Operations—Weaver Optics

Attention: Repair Department

N5549 County Road Z

Onalaska Wisconsin 54650

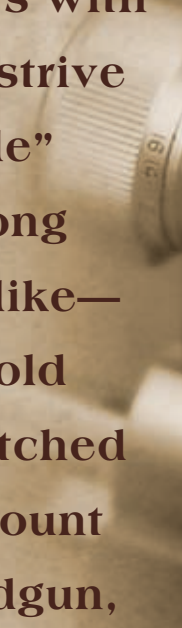
In other countries, please contact your Weaver® International Distributor in your country for service.

Repair Process: After receiving your returned product, a Weaver repair technician will evaluate your product to determine what repairs are needed and whether or not your product is covered by an applicable warranty. If the product is covered by our warranty, you will receive no additional correspondence and we will either repair or replace your product, at our option. Your repaired product, or a comparable replacement of equal value and function, will be shipped back to you. *If, however, your product is no longer covered by our warranty, one of our technicians will provide you with an estimate of the cost to repair or replace your product. You will have 20 business days to respond and either accept or decline the recommendation. If you accept the recommendation for repair or replacement you will need to provide the payment requested before we will commence work on your product. Payment can be made in the form of a money order, or if you prefer, by MasterCard or VISA. If you do not respond within the 20 business day period, we will return the un-repaired product to you.

Rings & Bases

Since 1930,

Weaver® has been providing hunters with the rings and bases that all others strive to imitate. The phrase “Weaver-style” has become a common phrase among hunters, shooters and gunsmiths alike—each knowing that the legendary hold of Weaver rings and bases is unmatched in the industry. When it’s time to mount optics on their favorite rifle or handgun, generations of hunters turn to the experts. They turn to Weaver Rings & Bases.







GRAND SLAM

TOP MOUNT BASES & RINGS

LEVER LOK™ TOP MOUNT RINGS



The quick detach feature makes this ring an ideal choice for the serious hunter on the go. This durable, reliable ring easily detaches and re-mounts without tools so you can protect your optics while traveling to your next hunt. The reliable Weaver® cross lock design allows for secure, tight fit on your favorite rifle. With solid steel construction, you can rest assured that this ring will perform in the heat of the hunt.

49325	1" MED MATTE
49326	1" HIGH MATTE
49327	1" X-HIGH MATTE
49328	1" MED BLACK
49329	1" HIGH BLACK
49330	1" X-HIGH BLACK
49335	30MM HIGH MATTE
49336	30MM HIGH BLACK

STEEL TOP MOUNT RINGS



Solid steel construction means that Weaver® Grand Slam™ Rings perform time after time when the pressure is on. The time tested Weaver cross lock design means a tight, secure fit on your favorite rifle. Now available in silver, there is a Grand Slam ring designed to fit all of your shooting needs.

49302	1" MED BLACK
49303	1" MED MATTE
49304	1" HIGH BLACK
49305	1" HIGH MATTE
49306	1" X-HIGH BLACK
49307	1" X-HIGH MATTE
49308	30MM HIGH BLACK
49309	30MM HIGH MATTE
49321	1" MED SILVER
49322	1" HIGH SILVER
49323	1" X-HIGH SILVER

TOP MOUNT WINDAGE ADJUSTABLE RINGS

Get the legendary strength of Weaver® steel along with the versatility of a windage adjustable ring with this offering.



49315	1" MED BLACK	49317	1" X-HIGH BLACK
49318	1" MED MATTE	49320	1" X-HIGH MATTE
49316	1" HIGH BLACK		
49319	1" HIGH MATTE		

WINDAGE ADJUSTABLE .22 RINGS

Following in the tradition of the solid steel Grand Slam™ rings, Weaver® adds a solid steel, windage adjustable .22 ring to an already impressive lineup. The dovetail design mounts to a 3/8" receiver and includes all of the features you have come to trust in the Grand Slam line.



49313	1" .22 MEDIUM MATTE
49314	1" .22 HIGH MATTE

RINGS

Grand Slam Rings are constructed of solid steel which yields amazing strength and scope retention.

49216	1" .22 MED BLACK
49217	1" .22 MED MATTE
49215	1" .22 MED NKL
49212	1" .22 HIGH BLACK
49213	1" .22 HIGH MATTE
49214	1" .22 HIGH NKL
49218	1" .22 X-HIGH BLACK
49219	1" .22 X-HIGH MATTE
49221	1" .22 X-HIGH NKL
49236	1" RUGER #1 77/22 MED BLACK
49234	1" RUGER 77 MED BLACK
49232	1" RUGER 77 HIGH BLACK
49233	1" RUGER 77 HIGH MATTE
49231	1" RUGER 77 HIGH NKL



STEEL TOP MOUNT BASES

Our precision-built steel bases are machined to tight tolerances for a custom fit. A square-cut notch mates to the sturdy cross bolt in every Weaver® top mount Ring. Custom-hardened fastening screws included.

48223	S25	48231	S55
48224	S35	48234	S61
48225	S36	48241	S91
48243	S40A	48247	S402
48226	S45	48249	S430
48227	S46	48275	S459
48228	S47	48276	S460
48244	S49A	48282	S466
48230	S54		



- + Custom fit
- + Maximum strength steel construction
- + Precision-built
- + Recoil-resistant for consistent zero

DOVETAIL MOUNT BASES & RINGS

DOVETAIL EXTENSION RINGS

Adjust the eye relief on your favorite scope. These solid, all-steel rings allow you to move your scope forward or back for optimum placement.



49222	1" STR XTF MED BLACK
49210	1" STR XTF HIGH BLACK
49224	1" XTR XTF MED BLACK

STEEL DOVETAIL SYSTEM

This proven mounting system gives you everything you need. Solid steel rings and bases lock scopes in place.



49274	BR-ABOLT 1PC BASE BLACK
49264	BR-ABOLT 2PC BASE BLACK
49265	BR-ABOLT 2PC BASE MATTE
49272	MARLIN 336 1PC BASE BLACK
49268	REM 7400 1PC BASE BLACK
49266	REM 700 1PC BASE BLACK
49260	REM 700 2PC BASE BLACK
49261	REM 700 2PC BASE MATTE
49270	SAV 110 2PC BASE BLACK
49262	WIN 70 2PC BASE BLACK
49263	WIN 70 2PC BASE MATTE

DOVETAIL RING HEIGHT GUIDE

RING SIZE	SADDLE HEIGHT	FITS OBJECTIVE LENS SIZE
1" LOW	0.150	UP TO 40MM
1" MED	0.270	THRU 50MM
1" HIGH	0.400	THRU 56MM
1" X-HIGH	0.520	OVER 56MM
30MM MED	0.320	THRU 56MM
30MM HIGH	0.490	THRU 56MM
1" MED .22 RINGS	0.262	THRU 40MM
1" HIGH .22 RINGS	0.392	THRU 44MM
1" EXTRA HIGH .22 RINGS	0.512	THRU 50MM
1" MED MOD. 77/22 & NO.1	0.453	THRU 50MM
1" MED MOD. 77	STEPPED	THRU 50MM
1" HIGH MOD. 77	STEPPED	THRU 56MM

MISCELLANEOUS

49250	TORX SCREW ASSORTMENT
-------	-----------------------

STEEL DOVETAIL RINGS

These rings feature the positive dovetail locking system and boast rear mount windage adjustments. They offer maximum strength in steel construction and top-notch recoil resistance for the ultimate hold on your scope.



49200	1" LOW BLACK
49201	1" LOW MATTE
49202	1" MED BLACK
49203	1" MED MATTE
49239	1" MED NKL
49204	1" HIGH BLACK
49205	1" HIGH MATTE
49238	1" HIGH NKL
49206	1" X-HIGH BLACK
49207	1" X-HIGH MATTE
49226	30MM MED BLACK
49227	30MM MED MATTE
49208	30MM HIGH BLACK
49209	30MM HIGH MATTE

STEEL DOVETAIL RINGS

Offered as a one or two-piece system, these all-steel bases provide recoil resistance and feature the dovetail locking system for an ultra-secure, positive lock-on rings.

- + MAXIMUM STRENGTH STEEL CONSTRUCTION
- + RECOIL-RESISTANT FOR CONSISTENT ZERO
- + ONE OR TWO-PIECE OFFERINGS

SEE CHART ON PAGE 10 FOR PART NUMBERS

HANDGUN SYSTEMS

Use these complete systems to outfit your TC Encore handgun. Comes with solid steel rings and bases that lock scopes into place.



48980	TC ENCORE BLACK (3 rings)
48981	TC ENCORE MATTE (3 rings)



QUAD LOCK®

STEEL LOCK RINGS

QUAD LOCK® DETACHABLE RINGS

Two straps and four screws provide added gripping power for these lightweight, all-aluminum rings. Thumbscrews allow for quick detach.



NEW

49049	1" X-HIGH MATTE
49074	1" MED BLACK
49046	1" MED MATTE
49052	1" HIGH BLACK
49047	1" HIGH MATTE
49053	1" .22 TIP-OFF MATTE
49054	1" .22 TIP-OFF SILVER
49055	1" MED SILVER
49056	1" HIGH SILVER
49048	1" HIGH EXTENSION MATTE
49057	1" HIGH EXTENSION SILVER
49062	1" HIGH EXTENSION BLACK

QUAD LOCK® SYSTEMS

These systems include scope gripping, four strap rings and Weaver cross lock bases for an unbeatable combination.



49098	MARLIN 336
49099	REM 700

STEEL LOCK MOUNTS

These rings are made to mount to specific firearm receivers to enhance fit and performance. No bases are needed when using these rings.



49719	1" BR ABOLT BLACK
49720	1" BAR/LEVER BLACK
49721	1" FN SERIES BLACK
49727	1" KNIGHT MK-85 BLACK
49713	1" MARLIN 336 BLACK
49714	1" REM 7400/7600 BLACK
49712	1" REM 700 BLACK
49715	1" REM 742/760 BLACK
49711	1" RGR 10/22 BLACK
49734	1" RGR 10/22, SS
49724	1" RGR 77 BLACK
49732	1" RGR 77, SS
49723	1" RGR 77/22, MINI 14 BLACK
49735	1" RGR 77/22, MINI 14, SS
49717	1" SAVAGE 110 BLACK
49515	1" .22 SEE-THRU, BLACK
49733	1" .22 SEE-THRU, SS
49736	1" TC THUNDERHAWK BLACK
49718	1" WIN 70 BLACK
49725	1" WIN 88,100 BLACK
49716	1" WIN 94 A/E

When Bill Weaver introduced the 330 scope and "grasshopper" mount in 1930, he began a tradition of innovation and expertise that still holds true today. Weaver products are engineered to deliver the most reliable mounting system for your sporting optic needs. So no matter what optics you choose—riflescope, red dot, laser—trust that Weaver will have the rings, bases and mounts needed to lock them down tight. This dedication gives you precision, performance and peace of mind next time you venture afield. As an industry standard, no mounting system has earned the legendary status of Weaver. Go with the best. Go with the original. Go with Weaver.

MUZZLELOADER & .22 TIP OFF



RINGS & BASES

MUZZLELOADER RINGS & BASES

Anchor optics to your muzzle-loader with Weaver's new line of muzzleloader rings & bases. Rings are made with lightweight aluminum saddles and strong steel caps while bases feature aircraft-grade aluminum and Weaver's proven Crosslock design.



For more than 75 years, Weaver has been keeping scopes on firearms and hunters on target. 100% rugged service, 100% of the time. And this unwavering dedication to preserving both your optics and your hunt is now available for muzzleloaders.

MUZZLELOADER BASES W/RINGS

48530	TC ENCORE/OMEGA BASES W/ RINGS
48531	TRADITIONS IN-LINE/CVA ROUND W/ RINGS
48532	KNIGHT MK-85, BK-92 BASES W/ RINGS

MUZZLELOADER BASES

48520	TC ENCORE/OMEGA BASES
48521	TRADITIONS IN-LINE/CVA ROUND BASES
48522	KNIGHT MK-85, BK-92 ETC BASES

MOUNTS & BASES

.22 TIP-OFF MOUNTS

These mounts are made for .22s that have factory grooves in the rifle's receiver. They clamp directly to the receiver or Tip-Off Bases.



Sure Grip Rings shown or Tip-Off Bases.

49819	1" SURE GRIP BLACK
49821	1" SURE GRIP SS
49440	1" .22 BLACK

49039	1" .22 SS
49514	1" SEE-THRU BLACK
49517	1" SEE-THRU SS

.22 TIP-OFF ADAPTOR BASES

Allows .22 Tip-Off Mounts to be used on non-factory dovetailed rifles. Provide sure, tight fit for the ultimate in reliability.



* Fits 3/8" grooved receivers only

48203	T0-1
48201	T0-9
48009	T0-9S

48505	T0-9M
48202	T0-10*
48511	T0-11



DETACHABLE

TOP MOUNT RINGS & BASES

DETACHABLE TOP MOUNT RINGS

Get the best of both worlds with a steel strap for added strength and an aluminum saddle for reduced weight. These quick detach rings are the Original Weaver-style Rings.



49030	1" LOW BLACK	49080	1" X-HIGH BLACK
49040	1" LOW MATTE	49044	1" X-HIGH MATTE
49034	1" LOW SS	49036	1" X-HIGH SS
49071	1" MED BLACK	49122	30MM LOW BLACK
49041	1" MED MATTE	49121	30MM LOW MATTE
49032	1" MED SS	49131	30MM LOW SS
49050	1" HIGH BLACK	49110	30MM HIGH BLACK
49042	1" HIGH MATTE	49120	30MM HIGH MATTE
49033	1" HIGH SS	49130	30MM HIGH SS

TOP MOUNT BASE PAIRS

There's no longer a need to search for front and rear bases for your most popular firearms. Weaver® Base Pairs feature tough, lightweight aluminum construction to hold up to the most powerful recoil. The Weaver cross lock design means a tight, secure fit on your firearm. These bases accept all Weaver top mount cross lock rings.



48460	REM 700 MATTE
48461	REM 700 SILVER
48462	BROWNING A-BOLT MATTE
48463	BROWNING A-BOLT SILVER
48464	MAUSER 98 MATTE
48465	SAVAGE 110 MATTE
48466	SAVAGE 110 ACCU TRIGGER MATTE
48467	SAVAGE 110 ACCU TRIGGER SILVER
48468	WIN 70 MATTE
48469	WIN 70 SILVER
48470	BROWNING BAR MATTE
48471	MARLIN 336 MATTE
48472	REM 7400 MATTE
48473	MOSSBERG 500/835 MATTE
48474	RUGER 10/22 MATTE
48475	WIN 94 MATTE
48476	REM 798 MATTE
48477	REM 799 MATTE
NEW 48493	BROWNING X-BOLT MATTE
NEW 48495	BROWNING X-BOLT SILVER

SURE GRIP WINDAGE ADJUSTABLE

The four-screw system and steel cap offer shot-of-a-lifetime dependability. Windage adjustable models ensure that zeroing in your scope to critical accuracy is certain.



49140	1" MED BLACK
49143	1" MED MATTE
49141	1" HIGH BLACK
49144	1" HIGH MATTE
49142	1" X-HIGH BLACK
49145	1" X-HIGH MATTE

SURE GRIP DETACHABLE RINGS

These rings use a four-screw system, and have steel caps and an aluminum saddle for added strength. Also features the quick detach system, allowing you to loosen the thumb screws and go to iron sights in seconds.



49160	1" MED BLACK
49163	1" MED MATTE
49161	1" HIGH BLACK
49164	1" HIGH MATTE
49162	1" X-HIGH BLACK
49165	1" X-HIGH MATTE

SEE-THRU DETACHABLE RINGS

Utilize iron sights or your scope for quick target acquisition with these convenient rings. The square cross lock bolt fits tightly and securely with Weaver® Top Mount Bases.



49513	1" BLACK
49523	1" MATTE
49522	1" SS
49512	1" EXT BLACK
49510	1" EXT MATTE
49524	1" DUAL EXT BLACK
49525	1" DUAL EXT MATTE

DETACHABLE

WEAVER

TOP MOUNT RINGS & BASES

DETACHABLE EXTENSION TOP MOUNT RINGS

Try these to get the ideal eye relief. They let you position your scope forward or rearward.



49090	1" MED EXT BLACK
49091	1" MED EXT MATTE
49092	1" MED EXT SILVER
49060	1" EXT HIGH BLACK
49043	1" EXT HIGH MATTE
49035	1" EXT HIGH SS
48448	1" EXT X-HIGH BLACK
48449	1" EXT X-HIGH MATTE
49061	1" DUAL EXT BLACK
49045	1" DUAL EXT MATTE
49038	1" DUAL EXT SS
49155	30MM LOW EXT BLACK
49150	30MM LOW EXT MATTE
49156	30MM HIGH EXT BLACK
49152	30MM HIGH EXT MATTE

TOP MOUNT ALUMINUM BASES

Each Weaver base is machined to tight tolerances for a custom fit. These aluminum bases offer maximum strength for rings to hold tight.



REFER TO PAGE 34 FOR PART NUMBERS

DETACHABLE SIDE MOUNTS

Side mount brackets detach and attach in seconds, just like our detachable top mounts (the bases themselves do not). Side mount brackets are available in a "high profile" in a standard or long length to accept a variety of scopes.



48401	1
48402	2
48403	3A
48412	3B
48413	3C
48415	3D
48405	5
48407	7
48408	8
48416	10M
48409	M
49340	1" LONG HIGH BRACKET & RINGS
49350	1" HIGH BRACKET & RINGS

DETACHABLE COMPLETE RIFLE MOUNT SYSTEM

Weaver covers every angle. These systems provide everything you need for the best mounting solution available for these specific models.



48763	MARLIN 336
48793	REM 4,6,7400,7600
48736	REM 700
48794	WIN 94

DETACHABLE TOP MOUNT HEIGHT GUIDE

RING SIZE	SADDLE HEIGHT	FITS OBJECTIVE LENS SIZE
1" LOW	0.089	THRU 38MM
1" MEDIUM	0.169	THRU 40MM
1" HIGH	0.332	THRU 44MM
1" EXTRA HIGH	0.560	THRU 50MM
1" SEE-THRU	0.750	THRU 50MM
30MM LOW	0.288	THRU 33MM
30MM HIGH	0.500	THRU 44MM
1" TIP-OFF	0.25	THRU 36MM
1" TIP-OFF SEE-THRU	0.750	THRU 50MM



TACTICAL

RINGS MOUNTS & BASES

TACTICAL RINGS

In the tactical world, performance is mandatory—there is no compromise. Whether it's intense training or real-life action, you need your zero to stay true. These aircraft-grade aluminum tactical rings feature six points of contact for maximum security and are designed to withstand the most grueling environments imaginable. If you demand the most from your tactical scope, demand Weaver.



48350	1" HIGH MATTE
48351	1" X-HIGH MATTE
48352	30MM HIGH MATTE

AR-15 MOUNTS

These sturdy, versatile mounts easily attach to various AR-15 style weapons. Picatinny style rails accept Weaver® Top Mount Rings to secure your optics. Utilize the Tri Rail design to mount a variety of accessories including tactical lasers or flashlights.

48320	SINGLE RAIL MOUNT SYSTEM - CARRY HANDLE MOUNT
48321	SINGLE RAIL MOUNT SYSTEM - FLAT TOP MOUNT
48322	TRI RAIL MOUNT SYSTEM - CARRY HANDLE MOUNT
48323	TRI RAIL MOUNT SYSTEM - FLAT TOP MOUNT
48326	CARRY HANDLE/SIGHT FOR AR-15
48327	AR-15 BASE PAIR FOR HAND GUARD



TACTICAL MULTI SHOT BASES

These versatile bases from Weaver® help give your gun the tactical edge. Tactical Multi Slot Bases are constructed of tough, lightweight aluminum so they can withstand the most powerful recoil. They accept all Weaver Top Mount Rings and accommodate the mounting of devices such as scopes, red dots and laser optics, while allowing for optimal eye relief.

48330	MULTI SLOT REM 700 S/A
48331	MULTI SLOT SKS (STEEL)
48332	MULTI SLOT MINI 14/NO RINGS
48333	MULTI SLOT MOSSBERG 590
48338	MULTI SLOT SAVAGE ACCU-S/A
48337	MULTI SLOT WIN 1300
48335	MULTI SLOT RUGER 10/22
48336	MULTI SLOT REM 597
48334	MULTI SLOT REM 700 L/A



PICATINNY SYSTEM NEW

Shooters can now attach a wide variety of accessories to their firearm with the new Swivel Stud Picatinny Rail Adaptor. This adaptor connects to the swivel stud to give standard rifles a Picatinny Rail option.

48328	PICATINNY SYSTEM
-------	------------------



SHOTGUN & PISTOL

WEAVER

MOUNTING SYSTEMS

CONVERTA-MOUNT™ SHOTGUN SYSTEM

They let you transform your bird gun into a deer hunting firearm along with the change in seasons. Two thumb screws put your scope on or take it off. Our see-under systems let you use your scope or bead.



48870	REM 870, 1100, 1187 MED RINGS
48881	SEE-UNDER REM 870, 1100 LOW RINGS
48884	SEE-UNDER MOSSBERG 500/835 LOW RINGS
48883	SEE-UNDER WIN 1200, 1300 LOW RINGS

CONVERTA-MOUNT™ SHOTGUN BRACKETS

These brackets give you a choice of scope mounting position and fit any Converta-Mount side base. Available in low-profile or see-under style.



48310	SEE-UNDER WIN, MOSSBERG
48311	SEE-UNDER REM 870
48301	REM 870, 1100

PISTOL MOUNT SYSTEM

An all steel yoke tightens on the frame for recoil-proof performance. This system, with quick detachable medium rings included, offers versatility for scope changes and makes your pistol a more accurate tool for hunting and shooting.

48601	301	48606	306
48610	301S	48620	306S
48602	302	48609	307
48607	302S	48608	307S
48604	304	48611	308S
48605	305	48622	314



NO GUNSMITH SHOTGUN MOUNTS

Mount your favorite sight device with ease using the new Weaver® No Gunsmith mounts. The multi slot bases allow you to mount a variety of optics including scopes, red dots and laser sights while obtaining the optimum eye relief. The low profile, form fitting design allows you to shoot in your natural position without "peeking." Strong and lightweight, made of tough polymer composite material, these mounts will operate in temperatures of -40°F to 150°F.



48340	REM 870, 1100, 1187 12 AND 20 GAUGE
48341	MOSSBERG 500, 835 12 GA ONLY
48342	REM 870, 1100, 1187 12 AND 20 GAUGE HARDWOODS HD
48343	MOSSBERG 500, 835 12 GA ONLY HARDWOODS HD

CONVERTA-MOUNT™ SIDE BASES

For use with our Converta-Mount low profile or see-under brackets and Weaver top mount rings. Makes scope mounting on several different shotguns a breeze.

48302	REM 870, 1100
48303	MOSSBERG 500, 835
48307	WIN 1200



PISTOL MOUNT BASES

Available without rings, these bases allow you to purchase the specific rings you want to suit your application. Rugged steel yoke design allows for easy installation.

48638	301 RUGER BLACKHAWK
48635	301S RUGER BLACKHAWK
48644	302 MINI 14
48646	302S MINI 14
48639	304 COLT PYTHON
48640	305 RUGER SECURITY SIX
48641	306 RUGER 22
48637	306S RUGER 22
48642	307 S&W
48634	307S S&W
48648	308S RUGER REDHAWK
48643	314 RUGER SINGLE SIX
48496	RUGER SUPER REDHAWK 1-PC BASE-SILVER
48497	S & W X-FRAME 1-PC BASE-NICKEL PLATED



NEW

NEW



CHARTS

SIMMONS RING CHART

49166	1" SILVER/MEDIUM
49167	1" BLACK GLOSS/MEDIUM
49168	1" MATTE BLACK/MEDIUM
49169	1" MATTE BLACK/22 MEDIUM

49170	1" SILVER/22 MEDIUM
49171	1" BLACK GLOSS/HIGH
49172	1" MATTE BLACK/HIGH
49173	1" SILVER/HIGH

49174	30MM/MATTE BLACK/MEDIUM
49175	30MM/MATTE BLACK/HIGH
49176	1" MATTE BLACK/SEE-THRU
49178	1" BLACK GLOSS/22 MEDIUM

NEW

GRANDSLAM STEEL - DOVETAIL BASES: FROM PAGE 3

48964	2PC ANSCHUTZ BLACK
48904	2PC BR-A-BOLT LA/SA BLACK
48905	2PC BR-A-BOLT LA/SA MATTE
48922	1PC BR-A-BOLT LA
48923	1PC BR-ABOLT LA MATTE
48924	1PC BR-A-BOLT SA
48925	1PC BR-ABOLT SA MATTE
48932	1PC BR-MARK II BLACK
48933	1PC BR-MARK II MATTE
48911	2PC BR WSSM MATTE
48960	2PC COLT SAUER BLACK
48970	2PC CVA BLACK
48974	1PC HUSQVARNA BLACK
48928	1PC MARLIN 336
48929	1PC MARLIN 336 MATTE
48954	1PC MAUSER FN BLACK
48952	2PC MAUSER FN BLACK
48958	1PC MARLIN 1894 BLACK
48950	1PC MAUSER SM 95 BLACK

48916	1PC MAUSER 98 BLACK
48910	2PC MAUSER 98 BLACK
48900	2PC REM 700 LA/SA & HOWA/VANGUARD
48901	2PC REM 700 LA/SA & HOWA/VANGUARD MATTE
48971	2PC REM 700 LA/SA & HOWA/VANGUARD NKL
48912	1PC REM 700 LA & HOWA/VANGUARD
48913	1PC REM 700 LA & HOWA/VANGUARD MATTE
48930	1PC REM 700 SA BLACK
48931	1PC REM 700 SA MATTE
48948	1PC REM 760
48978	1PC REM 788 LA BLACK
48946	1PC REM 788 XLA BLACK
48914	1PC REM 7400, 486
48915	1PC REM 7400, 486 MATTE
48962	2PC SAKO BLACK
48956	1PC SAV 99 BLACK
48902	2PC SAV 110 LA/SA BLACK
48903	2PC SAV 110 LA/SA MATTE
48972	2PC SAV 110 LA/SA NKL

48906	2PC SAV 110 LA/SA ACU-TRIGGER MATTE
48918	1PC SAV 110 LA BLACK
48920	1PC SAV 110 SA BLACK
48966	1PC SPRINGFIELD BLACK
48968	1PC SPRINGFIELD 03A BLACK
48926	1PC TC ENCORE
48976	2PC WEATHERBY MARK V BLACK
48908	2PC WIN 70 (.860 SPACING) BLACK
48909	2PC WIN 70 (.860 SPACING) MATTE
48934	2PC WIN 70 (.435 SPACE & PRE-64) BLACK
48935	2PC WIN 70 (.435 SPACE & PRE-64) MATTE
48907	2PC WIN 70 WSSM MATTE
48940	1PC WIN 70 SA-1984 BLACK
48936	1PC WIN 70 (PRE-64) BLACK
48938	1PC WIN 70 (.860 SPACE) BLACK
48942	1PC WIN 88, 100 BLACK
48944	1PC WIN 94-AE BLACK

TOP MOUNT ALUMINUM BASES: FROM PAGE 7

48011	11	48028	28	48044	44	48059	59	48075	75	48093	93	48000	407S	48435	418M
48012	12	48029	29	48045	45	48064	60A	48076	76	48094	94	48112	408	48453	418S
48013	13	48030	30	48510	45S	48061	61	48079	79	48095	95	48513	410	48437	419M
48014	14	48031	31	48046	46	48060	61A	48080	80	48096	96	48452	410S	48438	420M
48015	15	48032	32	48004	46S	48002	61S	48081	81	48097	97	48632	411	48439	420S
48016	16	48035	35	48502	46M	48504	61M	48082	82	48098	98	48633	411S	48444	421M
48017	17	48006	35S	48047	47	48062	62	48083	83	48099	99	48512	412S	48443	423M
48018	18	48500	35M	48003	47S	48069	63B	48084	84	48109	401	48425	413	48446	424
48019	19	48036	36	48503	47M	48447	63BS	48085	85	48001	401S	48441	413S	48445	424M
48020	20A	48005	36S	48048	48	48065	65	48086	86	48108	402	48442	413M	48450	427
48021	21	48501	36M	48049	49A	48067	67	48087	87	48429	402M	48426	414M	48451	428
48022	22	48039	39	48050	50	48068	68	48088	88	48430	402S	48427	414S	48454	429M
48023	23	48040	40A	48053	53	48070	70	48073	89	48107	403	48431	415	48506	93AM
48024	24	48428	40AM	48054	54	48071	71	48090	90	48106	404	48432	415M	48455	430M
48025	25	48041	40AS	48055	55	48010	71A	48091	91	48105	405	48433	415S	48456	432M
48026	26	48042	42	48057	57	48072	72	48092	92A	48110	406	48434	416M		
48027	27	48043	43	48058	58	48074	74	48007	92AS	48111	406S	48440	417M		

MOUNT CHARTS



WEAVER® MOUNT APPLICATIONS CHART	NOTES	TOP MOUNT BASES					STEEL LOCK MOUNTS	SIDE MOUNT	GRAND SLAM™ STEEL TOP MOUNT BASES				GRAND SLAM™ DOVETAIL BASES			
		STANDARD			EXTENSION				COMPLETE SYSTEM	USE ONLY WITH SIDE MT BRACKET	STANDARD		EXTENSION		1-PC	2-PC
		REAR	FRONT	1-PC	REAR	FRONT					REAR	FRONT	REAR	FRONT		
ANSCHUTZ																
▶ MARK 12		16	16													
▶ 54, 54MS, 64, 64MS, 164, 1400 SERIES, 1500 SERIES		91	91							S91	S91				48964	
▶ 153 DELUXE		19	19													
▶ 1568		61	46			402		1								
▶ MATTE		61M	46M			402M	49717		S61	S46		S402				
▶ SILVER		61S	46S			402S	49729									
AUTO SHOTGUNS																
▶ ALL AUTOS EXCEPT REM 11-48, 11-87, 1100, SPTSMN 48	4							7								
BENELLI																
▶ NOVA SHOTGUN (MATTE)				423M												
▶ SUPER BLACK EAGLE, SUPER BLACK EAGLE II, M1 & M2 FIELD GUNS				93AM												
BERETTA																
▶ MATO RIFLE		49A	46						S49A	S46						
▶ PINTAIL SLUG GUN		35	35		40A	40A										
▶ MATTE		35M	35M		40A-M	40A-M			S35	S35	S40A	S40A				
▶ SILVER		35S	35S		40A-S	40A-S										
BRITISH 303																
WITH ENFIELD ACTION	4, 15			TO-1												
BROWNING																
▶ 1885 HIGH WALL (OCTAGON BARREL)	1, 3	11	29													
▶ 22 AUTO	18			60A												
▶ SAKO ACTIONS IN 243, 308, 22-250, 222 & 222 MAG.		72	71													
▶ A-BOLT, A-BOLT 22 STALKER; MEDALLION		47	47				49719							48922 L/A	48904	
▶ BLACK														48924 S/A	48904	
▶ MATTE		47M	47M						S47	S47				48923 L/A	48905	
▶ MATTE														48925 S/A	48905	
▶ SILVER		47S	47S													
▶ A-BOLT SHOTGUN																
▶ MATTE		47M	419M													
▶ A-BOLT (EUROPEAN MODEL), MOD 52, 52C	5	85	85													
▶ BOLT ACTION BBR, HI-POWER, OTHER CAL. (OLDER MOD.)		45	46			402	49721	5	S45	S46		S402				
▶ SILVER		45S	46S			402S										
▶ BAR, BAR II, MARK II, BLR LIGHTNING (LEVER), BPR	5	54	54				49720							48932		
▶ MATTE									S54	S54				48933		
▶ BLR (LEVER ACTION)		25	25						S25	S25						
▶ BLR WITH FLAT TOP RECEIVER (OLDER MODELS)		28	28													
▶ BBR (BOLT ACTION), LONG & SHORT ACTIONS		47	46			402	49718									
▶ MATTE		47M	46M			402M			S47	S46		S402				
▶ SILVER		47S	46S			402S										
▶ A-BOLT WSSM		427	47												48911	
▶ BAR MATTE				432M												
BSA																
▶ MONARCH MEDIUM ACTION IN 222, 243 & 308	25	36	35	97		40A										
▶ MATTE		36M	35M			40A-M	49712		S36	S35		S40A				
▶ SILVER		36S	35S			40A-S										
▶ CF2, MONARCH LONG ACTION IN 7MM, 270 & 30-06	25	36	35	98		40A										
▶ MATTE		36M	35M			40A-M	49712		S36	S35		S40A				
▶ SILVER		36S	35S			40A-S										
▶ OTHER HIGH-POWERS		28	28													
CARCANO																
▶ CARCANO	4, 6							1								
CARL GUSTAF																
▶ MOD 2000									S460	S460						
CHURCHILL																
▶ HIGHLANDER		36	35			40A										
▶ MATTE		36M	35M			40A-M	49712		S36	S36		S40A				
▶ SILVER		36S	35S			40A-S										
▶ CIL																
▶ 830								1								



MOUNT CHARTS

WEAVER® MOUNT APPLICATIONS CHART			NOTES	TOP MOUNT BASES			STEEL LOCK MOUNTS	SIDE MOUNT	GRAND SLAM™ STEEL TOP MOUNT BASES				GRAND SLAM™ DOVETAIL BASES	
MAKE: MODEL OF FIREARM COLOR INDICATES FINISH: GLOSS BLACK MATTE BLACK SILVER				STANDARD		EXTENSION	COMPLETE SYSTEM	USE ONLY WITH SIDE MT BRACKET	STANDARD		EXTENSION		1-PC	2-PC
				REAR	FRONT	1-PC			REAR	FRONT	REAR	FRONT		
CHURCHILL (CONTINUED)														
▶ 871					62		49715							
▶ 900				19	19									
▶ 950 & 950-C				61	46		402		1					
▶ MATTE				61M	46M		402M	49717		S61	S46		S402	
▶ SILVER				61S	46S		402S							
▶ 972-C				45	46		402	49721		S45	S46		S402	
▶ SILVER				45S	46S		402S							
COLT														
▶ 57				45	46		402	49721		S45	S46		S402	
▶ SILVER				45S	46S		402S							
▶ COLTSMAN IN 223, 243 & 308 CAL. (ROUND RECEIVER)				25	25					S25	S25			
▶ COLTSMAN IN 264 & 30-06 CAL. (ROUND RECEIVER)				54	54			49720		S54	S54			
▶ COLTSMAN WITH SAKO STYLE ACTION IN 223 & OTHER CAL				67	65									
▶ H BAR			10											
▶ SHARPS				85	85									
▶ PYTHON, KING COBRA, & TROOPER MKIII, MKV														
(NOT DRILLED/TAPPED)			8		48639									
▶ ANACONDA, PYTHON & KING COBRA PISTOLS (SILVER)			8, 17		412S									
▶ SAUER				35	35		40A	40A						48960
▶ MATTE				35M	35M		40A-M	40A-M		S35	S35	S40A	S40A	
▶ SILVER				35S	35S		40A-S	40A-S						
COOEY														
▶ 60 & 600									2					
▶ 71				47	46		402	49718	1	S47	S46		S402	
▶ MATTE				47M	46M		402M			S47	S46		S402	
▶ SILVER				47S	46S		402S							
CVA														
▶ OCTAGON BARRELS / RECEIVERS			17	61A	61A									
▶ ROUND BARRELS / RECEIVERS (POST '96 MODELS)				418M	418M									48970
▶ SILVER				418S	418S									
ENFIELD WITH RECEIVER CUT DOWN LIKE:														
▶ REMINGTON 30				11	11				1					
▶ WINCHESTER 70				47	46		402							
▶ MATTE				47M	46M		402M	49718		S47	S46		S402	
▶ SILVER				47S	46S		402S							
▶ REMINGTON 721				36	35		40A							
▶ MATTE				36M	35M		40A-M	49712		S36	S35		S40A	
▶ SILVER				36S	35S		40A-S							
GARCIA														
▶ 73					53		49725							
▶ 74				67	65									
GOLDEN EAGLE														
▶ 7000				71	71									
GROOVED RECEIVER WITH 3/8" DOVETAILS														
▶ SEE .22 RING INFORMATION			12					49515						
▶ SILVER								49733						
H & R														
▶ 65, 165, 150 & 151 (AUTO)				18	18				2					
▶ 250, 251, 264, 265, 365, 450 & 550				18	16				2					
▶ 232C SHOTGUN (10 GA.) & 980 ULTRA				19	19									
▶ 155, SB2 ULTRA (.22-250), TOPPER 158C (1973+), 157						82								
▶ 300, 301, 330 & 370 (PRE 1973)				45	46		402	49721	5	S45	S46		S402	
▶ SILVER				45S	46S		402S							
▶ 300 & 301 S.A. IN 22-250, 243 & 308 (1973+)				83	84									
▶ 300 & 301 L.A. IN 270, 30-06, 7MM & 300 WIN (1973+)				54	46		402			S54	S46		S402	
▶ 317 & 322				11	35		40A							
▶ 317 (PRE 1975)				67	65									
▶ 360 & 361						81								
▶ 700					87A									

MOUNT CHARTS



WEAVER® MOUNT APPLICATIONS CHART		NOTES	TOP MOUNT BASES			STEEL LOCK MOUNTS	SIDE MOUNT	GRAND SLAM™ STEEL TOP MOUNT BASES				GRAND SLAM™ DOVETAIL BASES	
MAKE: MODEL OF FIREARM COLOR INDICATES FINISH: GLOSS BLACK MATTE BLACK SILVER			STANDARD		EXTENSION	COMPLETE SYSTEM	USE ONLY WITH SIDE MT BRACKET	STANDARD		EXTENSION		1-PC	2-PC
			REAR	FRONT	1-PC			REAR	FRONT	REAR	FRONT		
H & R (CONTINUED)													
▶ 755, 765, 852 & 865			17	21				2					
▶ 800			12	12									
▶ TOPPER 30, 22 JET, & MOD 158 (PRE 1973)		18			60A								
HERTERS													
▶ J9			45	46		402	49721	5	S45	S46		S402	
▶ SILVER			45S	46S		402S							
▶ U9 BSA ACTION		4	28	28									
▶ U9 ROUND RECEIVER			36	35		40A							
▶ MATTE			36M	35M		40A-M	49712		S36	S35		S40A	
▶ SILVER			36S	35S		40A-S							
HIGH-STANDARD													
▶ HIGH-POWER			55	46		402		1	S55	S46			
▶ AUTO SHOTGUN								8					
INTERARMS													
▶ 92 CARBINE (REPLICA OF WIN. 92)		4						3A					
▶ ATD		18			60A								
▶ MARK X		1	55	20A									
▶ MINI MARK X		1	23	71A									
▶ VISCOUNT		1	45	46		402	49721		S45	S46		S402	
ITHACA													
▶ DEERSLAYER, 37 & 87 (12, 16, 20 GA.)					62		49715						
▶ LSA-55 & LSA-65			61	61			49727						
▶ MATTE			61M	61M					S61	S61			
▶ SILVER			61S	61S									
▶ 49SS, .22		4						3A					
▶ LIGHTNING X3			39	39									
JAPANESE													
▶ 6.5MM & 7.7MM		6			70			1					
KNIGHT MUZZLELOADERS													
▶ KNIGHT MK-85, BK-92 & T-BOLT (FLAT RECEIVERS)			61	61									
▶ MATTE			61M	61M			49727		S61	S61			
▶ SILVER			61S	61S									
▶ LK-93, WOLVERINE, LEGEND, DISC, AMERICAN, REVOLUTION			45	45					S45	S45			
▶ SILVER			45S	45S									
KRAG													
▶ (OFFSET TO LEFT FOR EASY EJECTION)		4						2					
LAKEFIELD													
▶ 22 RIMFIRE		12											
LEE-ENFIELD													
▶ LEE-ENFIELD		4, 15			T0-1								
LEGACY													
▶ HOWA			36	35		40A						48912	48900
▶ MATTE			36M	35M		40A-M	49712		S36	S35		S40A	48913
▶ SILVER			36S	35S		40A-S							48901
LLAMA (PISTOL)													
▶ SUPER COMANCHE (FLAT SURFACE - SEE OCTAGON BARRELS)		4											
MAGNUM RESEARCH													
▶ LONE EAGLE SSP 91 PISTOL			16	16									
MARLIN													
▶ 45, 30AS 336 (ALL MODELS) 444, 1893, 1895, CAMP 9, 922M, 989, .22 AUTO					63B		49713					48928	
▶ SILVER					63BS								
▶ MATTE									S466	S466		48929	
▶ A1 & 50			15	15				2					
▶ 39A, 39D & CENTURY (OCTAGON BARREL)			28	31									
▶ 39A (ROUND BARREL)		21	29	16	90			2					
▶ 57 MAGNUM					58								



MOUNT CHARTS

WEAVER® MOUNT APPLICATIONS CHART		NOTES	TOP MOUNT BASES				STEEL LOCK MOUNTS	SIDE MOUNT	GRAND SLAM™ STEEL TOP MOUNT BASES				GRAND SLAM™ DOVETAIL BASES		
MAKE: MODEL OF FIREARM COLOR INDICATES FINISH: GLOSS BLACK MATTE BLACK SILVER			STANDARD		EXTENSION	COMPLETE SYSTEM	USE ONLY WITH SIDE MT BRACKET	STANDARD		EXTENSION		1-PC	2-PC		
			REAR	FRONT	1-PC			REAR	FRONT	REAR	FRONT			REAR	FRONT
MARLIN (CONTINUED)															
▶ 88, 89 & 98			18	18				2							
▶ 80, 81 & 980			12	12				2							
▶ 455			45	46			402	49721	5	S45	S46		S402		
▶ SILVER			45S	46S			402S								
▶ 512 SLUG MASTER & 55 (DRILL & TAP) (MATTE)									10M						
▶ 60, 990L, 70, 995, 882, 25MN, 883		12													
▶ MR7			47	46			402								
▶ MATTE			47M	46M			402M	49718		S47	S46		S402		
▶ SILVER			47S	46S			402S								
▶ MLS-50 & MLS-54, (BASES SOLD 2/PACK)			406	406				49736							
▶ SILVER			406S	406S											
▶ 1894					63B								48958		
▶ 900 SERIES IN .17 & .22 CALIBERS		12													
MAUSER															
▶ RECEIVER RING ABOUT 1.410" DIAMETER (98FN)		1, 2	45	46			402	49721	5	S45	S46		S402	48954	48952
▶ SILVER			45S	46S			402S								
▶ RECEIVER RING ABOUT 1.300" DIAMETER (SWEDISH 96)		1, 2	55	46			402		1	S55	S46		S402	48950	
▶ BAUER 3000 & 4000			68	46			402								
▶ MARK X		1	55	20A											
▶ 98													48916	48910	
MOSSBERG															
▶ 25, 26, 42, 46M, 140, 142 & 146, 45-46 W/ 3/4" DIA. BBLs			12	13					2						
▶ 40			16	21					2						
▶ 43, 44, 144, 46BT & 35			12	16					2						
▶ 45, 46 EARLY MODELS WITH 13/16" DIA. BBLs			12	16					2						
▶ 320, 340, 342 & 620			21	21					2						
▶ 640					63B			49713							
▶ 680, 800 & 695-SHOTGUN (USE DUAL EXTENSION RINGS)			55	55						S55	S55				
▶ 50, 51, 151, 152, 350 & 352			12	12					2						
▶ 400			20A	42											
▶ 472, 479 & 679					80										
▶ 500AS (PRE 1997) & 600 SHOTGUNS					88										
▶ 500 (1997+), 590 & 835 SHOTGUNS (MATTE)		25			417M										
▶ 810 & RM7			25	11											
▶ 100 ATR, 1500, 1700			36	35			40A							48912	48900
▶ MATTE			36M	35M			40A-M	49712		S36	S35		S40A	48913	48901
▶ SILVER			36S	35S			40A-S								
▶ 935 (MATTE)					430M										
MUSGRAVE															
▶ MARK I & MARK II			54	46			402			S54	S46		S402		
▶ MARK III & MARK IV			45	46			402	49721		S45	S46		S402		
▶ SILVER			45S	46S											
NAVY ARMS															
▶ COUNTRY BOY MUZZLELOADER			46	46	53	402	402								
▶ MATTE			46M	46M		402M	402M	49725		S46	S46	S402	S402		
▶ SILVER			46S	46S		402S	402S								
NEW ENGLAND FIREARMS (H & R)															
▶ HANDY RIFLE, HORNET (USE EXTRA HIGH RINGS)					82										
▶ N.E.F. 10 GAUGE SHOTGUN			19	19											
▶ HUNTSMAN MUZZLELOADER		8			82										
NEW HAVEN															
▶ 495B (MATTE)									10M						
NORINCO															
▶ 22 AUTO (REPLICA OF BROWNING 22 AUTO)		18			60A										
▶ JW-15		12													
OCTAGON BARREL OR FLAT TOP RECEIVERS															
▶ CAN BE FITTED WITH THE FOLLOWING BASES:			61	61	50										
PARKER-HALE															
▶ 1000, 1000C, 1100, 1200 & 1700			45	46			402	49721		S45	S46		S402		

MOUNT CHARTS



WEAVER® MOUNT APPLICATIONS CHART	NOTES	TOP MOUNT BASES					STEEL LOCK MOUNTS COMPLETE SYSTEM	SIDE MOUNT USE ONLY WITH SIDE MT BRACKET	GRAND SLAM™ STEEL TOP MOUNT BASES				GRAND SLAM™ DOVETAIL BASES		
		STANDARD			EXTENSION				STANDARD		EXTENSION		1-PC	2-PC	
		REAR	FRONT	1-PC	REAR	FRONT			REAR	FRONT	REAR	FRONT			
PARKER-HALE (CONTINUED)															
▶ SILVER		45S	46S			402S									
▶ 2600		71	85												
▶ MIDLAND		71	75												
PEDER SOLI															
▶ LIGHTNING		75	75												
PUMP SHOTGUNS															
▶ ALL PUMPS EXCEPT WIN. 42	4							8							
RAPTOR ARMS															
▶ SAME AS REMINGTON 700 LONG ACTION	25	36	35	98		40A		1	S36	S35		S40A			
▶ MATTE		36M	35M			40A-M	49712		S36	S35		S40A			
▶ SILVER		36S	35S			40A-S									
REMINGTON															
▶ 700, 78, 40X-L, 721 & 725 (ALL LONG ACTIONS)	25	36	35	98		40A		1						48912	48900
▶ MATTE		36M	35M			40A-M	49712		S36	S35				48913	48901
▶ SILVER		36S	35S			40A-S									48971
▶ 700, 78, 40X-S, 722 & 725 (ALL SHORT ACTIONS), 700 MZL. LDR.	25	36	35	97		40A		1	S36	S35		S40A		48930	48900
▶ MATTE		36M	35M			40A-M	49712		S36	S35		S40A		48931	48901
▶ SILVER		36S	35S			40A-S									
▶ 710		71	71												
▶ 788 ALL CALIBERS		76	75												
▶ 788 IN .222 MAG, .22/.250, .30/.30 CAL														48978	
▶ 788 IN .243, 6MM, .308 CAL														48946	
▶ 7 W/3 HOLES, 600, 660, XP-100 XR-100				70				1							
▶ 7 W/4 HOLES (NEW IN 1999), 673 (MATTE)		421M	35M						S430	S460					
▶ 740, 742 & 760				62			49715							48948	
▶ 4, 6, 74, 76, 7400, 7600 750				93			49714							48914	
▶ MATTE														48915	
▶ 8 & 81								7							
▶ 10, 11, 12, 34*, 341*, 510, 511, 512 & 521T	6	43	42					2							
▶ 12A, 121 WITH 3/4" DIAMETER BARRELS		18	13					2							
▶ 121 WITH 13/16" DIAMETER BARRELS		18	17					2							
▶ 12C OCTAGON BARREL		18	31												
▶ 14 & 141		20A	27												
▶ 41	6	17	17					2							
▶ 24 & 241	18			60A											
▶ 25		18	21					2							
▶ 30 & 720		11	11					1							
▶ 33	6	17	13					2							
▶ 513S & 513T		43	44					2							
▶ 514		16	21					2							
▶ 514 (NOT DRILLED & TAPPED) & 550	4	12	12												
▶ 541S & 541T		15	15												
▶ 522 VIPER	11														
▶ 5, 552, 572 & 581(S)	12														
▶ 597, 597LSS (MATTE)	25			414M											
▶ SILVER				414S											
▶ 798		55	20A												
▶ 799		71A	23												
▶ 870, 1100, 11-87 SHOTGUNS (SEE CONVERTA MOUNT SYSTEM)	24			429M											
▶ 11-48, 1100, SPORTSMAN 48 & 58 SHOTGUNS								8							
▶ GENISIS		418M	418M												
ROSSI (ALSO SEE INTERARMS)															
▶ .410/.22 LR & .410/.17 HMR SMALL FRAME MATCHED PAIR COMBOS ONLY	7			92A											
RUGER															
▶ NO. 1	1, 3, 4	85	89												
▶ NO. 3	1, 3, 4	85	86												
▶ 10/22 IN 22 LONG RIFLE CAL. (GROOVED & DRILLED)	16			T0-9											
▶ MATTE	16, 25			T0-9M			49711								
▶ SILVER	16			T0-9S			49734								



MOUNT CHARTS

WEAVER® MOUNT APPLICATIONS CHART		NOTES	TOP MOUNT BASES				STEEL LOCK MOUNTS	SIDE MOUNT	GRAND SLAM™ STEEL TOP MOUNT BASES				GRAND SLAM™ DOVETAIL BASES	
MAKE: MODEL OF FIREARM COLOR INDICATES FINISH: GLOSS BLACK MATTE BLACK SILVER			STANDARD		EXTENSION	COMPLETE SYSTEM	USE ONLY WITH SIDE MT BRACKET	STANDARD		EXTENSION		1-PC	2-PC	
REAR	FRONT		1-PC	REAR	FRONT			REAR	FRONT	REAR	FRONT			
RUGER (CONTINUED)														
▶ 10/22 MAG & 77/22 (W/BUILT-IN INTEGRAL MOUNTS), 77-50 ML						49723								
▶ SILVER						49735								
▶ 96/22 & 96/22 MAGNUM		16		T0-11										
▶ 44 CARBINE MAGNUM DEERSTALKER			47	68										
▶ M77 (ROUND TOP DRILLED)			79	35		40A						48912	48900	
▶ MATTE												48913	48901	
▶ M77, (W/BUILT-IN INTEGRAL MOUNTS)						49724								
▶ SILVER						49732								
▶ MINI 14 RANCH & MINI 30 (W/BUILT-IN INTEGRAL MOUNT)						49723								
▶ SILVER						49735								
▶ MINI 14-NO INTEGRAL MNTS (302)		8		48644										
▶ SILVER (302S)		8		48646										
▶ SINGLE SIX & SUPER SINGLE SIX (314)		8		48643										
▶ SECURITY SIX (305)		8		48640										
▶ BLACKHAWK & SUPER BLACKHAWK (301)		8		48638										
▶ SILVER (301S)		8		48635										
▶ REDHAWK (308S) SILVER		8		48648										
▶ MARK II PISTOL, STANDARD MODELS (306)		8, 13		48641										
▶ SILVER (306S)		8, 13		48637										
SAKO														
▶ L579			72	71										
▶ 72, 75 & 78			85	85										
▶ FINNWOLF				53		49725								
▶ FORESTER, FINNBEAR & VIXEN (TAPERED DOVETAILS)			67	65									48962	
▶ WHITETAIL HUNTER			61	61										
▶ MATTE			61M	61M		49727		S61	S61					
▶ SILVER			61S	61S										
SAUER														
200			35	35		40A								
▶ MATTE			35M	35M	40A-M	40A-M		S35	S35	S40A	S40A			
▶ SILVER			35S	35S	40A-S	40A-S								
202								S459	S460					
▶ SHR 970			25	25			49720	S25	S25					
SAVAGE														
▶ 3			16	21				2						
▶ 4 & 5			12	13				2						
▶ 6 & 7			12	12				2						
▶ 29 (ROUND BARREL)			11	22										
▶ 19 & 23			15	16				2						
▶ 20, 340, 340E, 342, 840 & 842E		14						1						
▶ 24		17		74										
▶ 24 & 900S (.22 CAL RIFLES W/GROOVED RECEIVERS)		12												
▶ 25 (OCTAGON BARREL)			19	31										
▶ 40 & 45			11	11				2						
▶ 67 SHOTGUN				93		49714								
▶ 93F HEAVY BARREL			16	16										
▶ 99, 1895 & 1899			14	19								48956		
▶ 170				62		49715								
▶ 219			12	30				2						
▶ 10, 12 & 16 (SHORT ACTIONS), STRIKER, PSTL, 510, 512, 516 S/A, 10 ML (2-PIECE ONLY) PRE 2003 MODELS		22	61	46		402						48920	48902	
▶ MATTE		22	61M	46M		402M		S61	S46		S402		48903	
▶ SILVER		22	61S	46S		402S							48972	
▶ 110, 112, 116 (LONG ACTIONS); 210 SHTG (USE X-HIGH RINGS) PRE 2003 MODELS		22	61	46	413	402		1				48918	48902	
▶ MATTE		22	61M	46M		402M	49717	S61	S46		S402		48903	
▶ SILVER		22	61S	46S		402S							48972	
▶ 2400			67	65										
▶ 10, 12, 110, 112 SERIES, W/ ACCUTRIGGER,, STEVENS 200, 10 ML II		22, 25	46	46		402								
▶ MATTE		22	46M	46M		402M		S46	S46	S402	S402		48906	
▶ SILVER		22	46S	46S		402S								

MOUNT CHARTS



WEAVER® MOUNT APPLICATIONS CHART		NOTES	TOP MOUNT BASES				STEEL LOCK MOUNTS COMPLETE SYSTEM	SIDE MOUNT USE ONLY WITH SIDE MT BRACKET	GRAND SLAM™ STEEL TOP MOUNT BASES				GRAND SLAM™ DOVETAIL BASES		
MAKE: MODEL OF FIREARM COLOR INDICATES FINISH: GLOSS BLACK MATTE BLACK SILVER			STANDARD			EXTENSION			STANDARD		EXTENSION		1-PC	2-PC	
			REAR	FRONT	1-PC	REAR			FRONT	REAR	FRONT	REAR			FRONT
SCHULTZ & LARSEN															
▶ SCHULTZ & LARSEN			54	45			402		1	\$54	\$45		\$402		
SEARS															
▶ 42 & 43			12	21											
▶ 50 & 51			45	46			402	49721	5	\$45	\$46		\$402		
▶ SILVER			45S	46S			402S								
▶ 51L			55	46			402		1	\$55	\$46		\$402		
▶ 53			47	46			402	49718	1					48908	
▶ MATTE			47M	46M			402M			\$47	\$46		\$402		48909
▶ SILVER			47S	46S			402S								
▶ 54 & 100									3B						
SHILEN															
▶ FLAT TOP RECEIVER			61	61				49727							
▶ MATTE			61N	61M						\$61	\$61				
▶ SILVER			61S	61S											
ROUND RECEIVER			35	35		40A	40A								
▶ MATTE			35M	35M		40A-M	40A-M			\$35	\$35	\$40A	\$40A		
▶ SILVER			35S	35S		40A-S	40A-S	49725							
SMITH & WESSON															
▶ MAUSER ACTIONS W/SMALL REC. RING ABOUT 1.30" DIA			55	46			402		1	\$55	\$46		\$402		
▶ 1500, 1600 & 1700			36	35			40A							48912	48900
▶ MATTE			36M	35M			40A-M	49712		\$36	\$35		\$40A	48913	48901
▶ SILVER			36S	35S			40A-S								
▶ 29, 629, 625, 686 & L, K & N FRAME RVLRS (FACTORY DRILLED)		8, 17, 23			401										
▶ SILVER		8, 17, 23			401S										
▶ L & K FRAME RVLRS (307)		8			48642										
▶ SILVER (307S)		8			48634										
▶ 41 PISTOL					62										
▶ 2206 TGT PSTL (SILVER)		17			407S										
▶ X FRAME (SILVER)		25													
SPRINGFIELD															
▶ 03		6	54	55					1	\$54	\$55				
▶ 03-A3		8	59	45											
SPRINGFIELD ARMORY															
▶ 1911 A-2 SASS CONVERSION					26										
STEVENS															
▶ 26			22	22					2						
▶ 27 OCTAGON			31	31											
▶ 53			16	21					2						
▶ 56 & 66			12	13					2						
▶ 57, 76, 4171/2 & 762			12	12					2						
▶ 110E			61	46			402		1						
▶ MATTE			61M	46M			402M	49717		\$61	\$46		\$402		
▶ SILVER			61S	46S			402S								
▶ 322 & 325									1						
▶ 416			18	17					2						
▶ 417			15	15					2						
▶ 418 & 418 1/2			16	16					2						
▶ SAVAGE/STEVENS 200		22	46	46		402	402								
▶ MATTE		22	46M	46M		402M	402M			\$46	\$46	\$402	\$402		48906
▶ SILVER		22	46S	46S		402S	402S								
STEVENS - SPRINGFIELD															
▶ 83			16	21					2						
▶ 85, 87 & 872		4	12	12					2						
▶ 840		14							1						
TAURUS															
▶ L, K & N FRAME RVLRS (LIKE S&W, FACTORY DRILLED)		8, 17, 23			401										
▶ SILVER		8, 17, 23			401S										
▶ L & K FRAME RVLRS (307)		8			48642										
▶ SILVER (307S)		8			48634										



MOUNT CHARTS

WEAVER® MOUNT APPLICATIONS CHART		NOTES	TOP MOUNT BASES				STEEL LOCK MOUNTS	SIDE MOUNT	GRAND SLAM™ STEEL TOP MOUNT BASES				GRAND SLAM™ DOVETAIL BASES	
MAKE: MODEL OF FIREARM COLOR INDICATES FINISH: GLOSS BLACK MATTE BLACK SILVER			STANDARD		EXTENSION	COMPLETE SYSTEM	USE ONLY WITH SIDE MT BRACKET	STANDARD		EXTENSION		1-PC	2-PC	
REAR	FRONT		1-PC	REAR	FRONT			REAR	FRONT	REAR	FRONT			
THOMPSON CENTER (CONTINUED)														
▶ CONTENDER HANDGUN & CONTENDER CARBINE RIFLE				92A										
▶ SILVER				92AS										
▶ SCOUT RIFLE & SCOUT PISTOL				404										
▶ TCR				405										
▶ THUNDERHAWK & FIREHAWK (2EA. PER PKG.)			406	406		49736								
▶ SILVER			406S	406S										
▶ TRADITIONAL STYLE MUZZLELOADERS, NEW ENGLANDER		19		408										
▶ ENCORE, OMEGA				410								48926		
▶ SILVER				410S										
▶ SYSTEM 1 & BLACK DIAMOND (2EA. PER PKG)			411	411										
▶ SILVER			411S	411S										
TIKKA														
▶ TIKKA W/FLAT RECEIVER			61	61										
▶ MATTE			61M	61M		49727		S61	S61					
▶ SILVER			61S	61S										
▶ SAKO DESIGN W/TAPERED DOVETAIL			67	65										
TRADITIONS														
▶ WHITETAIL W/OCTAGON RECEIVERS		17	61A	61A										
▶ IN-LINE MUZZLELOADERS W/ROUND RECEIVERS - MATTE			418M	418M										
▶ SILVER			418S	418S										
U. S. CARBINE														
▶ M1 CARBINE 30 CAL.		20						M						
VALMET														
▶ TAPERED DOVETAIL, SAKO DESIGN			67	65										
VOERE														
▶ 2130		4	28	28										
▶ 2150, 2165/1, 2165/2, 2165/3 & 2165/4 (MAUSER ACTION)			45	46		402	49721		S45	S46	S402			
▶ SILVER			45S	46S										
WEATHERBY														
▶ VANGUARD		1, 22	36	35		40A						48912	48900	
▶ MATTE		1, 22	36M	35M		40A-M			S36	S35	S40A	48913	48901	
▶ SILVER		1, 22	36S	35S		40A-S								
▶ MARK V STD. CAL INCL. 240MAG, CENTERFIRE PISTOL, 224 VARMINTMASTER, ULTRA LIGHTWEIGHT			36	415										
▶ MATTE			36M	415M										
▶ SILVER			36S	415S										
▶ FN MAUSER STYLE ACTIONS			45	46		402	49721	5	S45	S46	S402			
▶ SILVER			45S	46S		402S								
▶ MARK V MAG. CAL EXCEPT 240 MAG.			424	35									48976	
▶ MATTE			424M	35M		40A-M								
WESTERN FIELD														
▶ 712		6						1						
▶ 730			25	11										
▶ 740				63B		49713								
▶ SILVER				63BS										
▶ 750			67	65										
▶ 770			55	20A										
▶ 772				80										
▶ 775 & 780			55	55					S55	S55				
WINCHESTER (INCLUDES RANGER MODELS)														
▶ 03 & 63			19	22				2						
▶ 06, 62, 62A & 90 W/OCTAGON BARREL			32	32										
▶ 05, 07 & 10			20A	17										
▶ 42								2						
▶ 43			18	18										
▶ 52 (HOLE SPACING DIFFERENT)		6, 9	25	57				2						
▶ 52 (HOLE SPACING SAME)		6, 9	46	46		402		2						
▶ MATTE		6, 9	46M	46M		402M	402M		S46	S46	S402	S402		
▶ SILVER		6, 9	46S	46S		402S	402S							

MOUNT CHARTS



WEAVER® MOUNT APPLICATIONS CHART		NOTES	TOP MOUNT BASES				STEEL LOCK MOUNTS	SIDE MOUNT	GRAND SLAM™ STEEL TOP MOUNT BASES				GRAND SLAM™ DOVETAIL BASES		
MAKE: MODEL OF FIREARM COLOR INDICATES FINISH: GLOSS BLACK MATTE BLACK SILVER			STANDARD			EXTENSION		COMPLETE SYSTEM	USE ONLY WITH SIDE MT BRACKET	STANDARD		EXTENSION		1-PC	2-PC
			REAR	FRONT	1-PC	REAR	FRONT			REAR	FRONT	REAR	FRONT		
WINCHESTER (CONTINUED)															
▶ LEVER ACTIONS 53, 55, 64, 65, 66, 71, 1886, 1892, 95 & 1895		4							3A						
▶ 54, & EARLY MOD. 70 W/SERIAL NO. BELOW #66 350		6	48	46			402		1						
▶ 57 & 69			12	13					2						
▶ 60, 67 & 68		6	21	21											
▶ 61 W/ROUND BARREL			19	13					2						
▶ 61 W/OCTAGON BARREL			25	32					2						
▶ 69A, 72 & 47			12	17					2						
▶ 70 LONG ACTION (HOLE SPACING SAME), 670, 770		9	47	46	96		402		1				48938	48908	
▶ MATTE			47M	46M			402M	49718		S47	S46	S402		48909	
▶ SILVER			47S	46S			402S								
▶ 70 LONG ACTION (HOLE SPACING DIFFERENT) & 70 SUPER EXPRESS		9	49A	46			402			S49A	S46	S402			
▶ 70 SHORT ACTION (1984+)			47	46	99		402		1				48940	48908	
▶ MATTE			47M	46M			402M	49718		S47	S46	S402		48909	
▶ SILVER			47S	46S			402S								
▶ 70 WSSM			428	46										48907	
▶ 70 W/SERIAL NO BELOW 66 350 (PRE '64)													48936		
▶ 70 LONG ACTION, REAR HOLE SPC .435"														48934	
▶ 74			12	12					2						
▶ 75 SPORTER			15	30					2						
▶ 75 TARGET			15	16					2						
▶ 77			15	32					2						
▶ 88 & 100					53			49725					48942		
▶ 94 PRE '64									3D						
▶ 94 POST '64 & 94 TRAPPER									3B						
▶ 94 BIG BORE 375									3C						
▶ 94 ANGLE-EJECT BIG BORE			95	403											
▶ 94 ANGLE-EJECT (EXCEPT EARLIEST MODELS)			95	94				49716					48944		
▶ 94/22		16			T0-10										
▶ 520			85	85											
▶ 777			71	71											
▶ 1200 & 1500 SHOTGUNS (SEE CONVERTA MOUNT SYSTEMS)															
▶ 1300 & 1400 SHOTGUNS (ALSO SEE CONVERTA MOUNT SYS) MATTE		25			416M										
▶ 50 SHOTGUN									8						
▶ X-150, APEX MUZZLELOADERS (MATTE)			418M	418M											
▶ SILVER			418S	418S											

NOTES

- Shimming is probably required for perfect scope alignment.
- Rear base may require modifications for correct fit to military actions.
- Front base may require modification for correct fit.
- Gun will have to be drilled and tapped.
- Front base screws must be shortened by grinding.
- May require bolt and/or safety alteration, otherwise firearm cannot function safely and properly. Consult with a qualified gunsmith.
- BASE DOES NOT FIT ROSSI LARGE FRAME MATCHED PAIR COMBOS (ALL MODELS WITH 20 OR 12 GA SHOTGUN BARRELS).
- Remove rear sight to use.
- The handiest way to pinpoint the correct base for the Win. 52 & Win. 70 Long action Rifles is to check the spacing of the tapped holes for the rear base and compare it to the hole spacing for the front base. Does it have:

HOLE SPACING THE SAME	HOLE SPACING IS DIFFERENT
Model 52 Use 46+ 46	Model 52 Use 25+ 57
Model 70 Use 47+ 46	Model 70 Use 49A+ 46
- The Weaver type base built into this rifle will accept Weaver rings but our highest ring (1" See-Thru #49513) still isn't high enough to clear the front sight.
- The Weaver type base built into this firearm will accept any Detachable Top Mount Weaver Ring.
- Rifle has Grooved Receiver for Tip-Off Rings.
- Ruger Mark II Pistols. Weaver only offers a clamp on base with 1" rings (Pistol Mount System #306). Ruger supplies a short or long base and 1" or 30mm rings w/factory drilled and tapped pistols. Contact Ruger at 602-778-6555 for these items.
- Bolt Clearance problem may exist and scope will not be centered.
- Base accepts Tip-Off Rings only.
- T0-9, T0-10 & T0-11 bases accept either Detachable Top Mount Rings or Tip-Off Rings. Each have crossbolt slots and 3/8" grooves for both applications.
- Must be factory drilled and tapped.
- One-Piece base attaches to barrel and extends back over receiver.
- Requires the use of Thompson/Center base adapter.
- Requires drilling and tapping 4 holes in receiver and relief space cut in stock to clear base.
- Rear base is positioned on top of receiver and front base is positioned on the barrel. Drilling & tapping required. One-piece base mounts w/2 set screws & newer guns are factory drilled & tapped.
- For shorter tube scopes or red dot scopes use #402 extension front base or one-piece base if available. Extension base allows an extra .689".
- WARNING: NOT FOR USE WITH X-FRAME REVOLVERS. USE ON FIREARMS OTHER THAN THOSE LISTED MAY CAUSE INJURY.
- Top mount base is designed to fit 12GA models only.
- Can be used with Tactical Multi Slot bases.



COMMERCIAL PRODUCTS

ATK Commercial Products features a unique collection of brands that gives shooting and outdoor enthusiasts everything they need in one place. From ammunition,

optics and reloading equipment to gun cleaning chemicals and accessories, we offer advanced, high-performance products. Look for these leading brands:



www.alliantpowder.com
1-800-276-9337



www.outers-guncare.com
1-800-635-7656



www.blazer-ammo.com
1-866-286-7436



www.redfield-mounts.com
1-800-635-7656



www.shootersridge.com
1-800-635-7656



www.federalpremium.com
1-800-322-2342



www.estatecartridge.com
1-800-322-2342



www.cci-ammunition.com
1-866-286-7436



www.speer-bullets.com
1-866-286-7436



www.ram-line.com
1-800-635-7656



www.speer-ammo.com
1-866-286-7436



www.weaveroptics.com
1-800-635-7656



www.championtarget.com
1-800-635-7656
1-800-441-4971 (Clays)



www.gunslick.com
1-800-635-7656



www.nitrexoptics.com
1-800-635-7656



www.rcbs.com
1-800-533-5000



www.fusionammo.com
1-800-322-2342

We proudly support: Ducks Unlimited, The Foundation for North American Wild Sheep, Izaak Walton League of America, The National Wild Turkey Federation, Pheasants Forever, The Rocky Mountain Elk Foundation, Safari Club International, Whitetails Unlimited, The Ruffed Grouse Society, Becoming an Outdoors Woman, Women in The Outdoors, 4-H Shooting Sports Program, The Boy Scouts of America, International Hunter Education Association and Civilian Marksmanship Program.

Onalaska Operations. • N5549 County Trunk Z • Onalaska, WI 54650
©2008 Weaver Inc. • Printed in U.S.A.

For technical questions call Product Service at 1-800-635-7656 • www.weaveroptics.com