



FUSION[®]
2009 PRODUCT CATALOG



TABLE OF CONTENTS

New Products	2
Fusion Rifle.....	3-6
Fusion Lite	5-6
Fusion Handgun	7-8
Fusion Shotgun.....	7-8
Fusion Muzzleloading.....	9
Fusion Gear	10

EVERY DEER HUNTER HAS A STORY. THIS ONE DOESN'T END WITH A PUNCH LINE.

Unlike a lot of hunting tales, Fusion-inspired stories don't take place in years long-forgotten. They aren't about some mystical buck supposedly seen only once in a decade. Fusion® stories are recent, fresh, intense. And they're all about deer. Monster racks. Elusive bucks. Well-placed shots. And trips to the taxidermist. For the last few years, Fusion has been providing deer hunters a new way to tell stories. They aren't far-fetched, fancy or drawn out. No one had to walk up hill both ways in a blizzard just to get a glimpse of the buck. But they may have had to endure driving rain, blinding snow or gale-force winds. Either way, they were successful. End of story.

PROGRAMMED AND OPTIMIZED

Since its inception, Fusion® has been dedicated to deer. The first offerings were solely centerfire rifle, but that soon changed. We now offer a complete line of products that boast great accuracy, advanced construction and unbelievable performance. If you shoot anything from a handgun to muzzleloader, you'll find what you're after. This year, centerfire rifle hunters can get Fusion in four additional calibers. And handgun hunters will also find two new options. These new offerings show how we continue our dedication to the modern deer hunter.

LOAD NO.	CALIBER	WEIGHT		BULLET STYLE	PRIMER NO	VELOCITY IN FEET PER SEC. (TO NEAREST 10 FPS)
		GRAINS	GRAMS			Muzzle
F223FS1	223 Rem. (5.5)	62	4.02	Fusion	205	3000
F260FS1	260 Rem	120	7.78	Fusion	210	2950
F6555FS1	6.5x55 Swedish	140	9.07	Fusion	210	2530
F4570FS1	45-70 Government	300	19.44	Fusion	210	1850
F460FS1	460 S&W	260	16.85	Fusion	210	1600
F500FS1	500 S&W	275	17.82	Fusion	210	1600



FUSION® RIFLE: SPECIALLY-DESIGNED

Fusion® centerfire rifle ammunition gives hunters a deer bullet of unimaginable kinetic force. These were the original offerings that paved the way. We electrochemically joined pure copper to an extreme pressure-formed core to ensure optimal performance. The resulting integrated projectile releases radically high terminal energy on impact, radiating lethal shock throughout the target. This energy is optimized through mass weight retention, a top-secret tip-skiving process and bullet integrity.



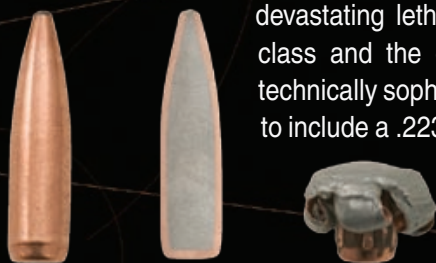
RIFLE BALLISTICS

LOAD NO.	CALIBER	WEIGHT		BULLET STYLE	PRIMER NO	VELOCITY IN FEET PER SEC. (TO NEAREST 10 FPS)					
		GRAINS	GRAMS			Muzzle	100	200	300	400	500
New F223FS1	223 Rem. (5.5)	62	4.02	Fusion	205	3000	2700	2410	2150	1900	1670
F243FS1	243 Win. (6.16x51mm)	95	6.16	Fusion	210	2980	2730	2490	2270	2060	1850
F2506FS1	25-06 Rem.	120	7.78	Fusion	210	2980	2780	2590	2400	2220	2050
New F260FS1	260 Rem.	120	7.78	Fusion	210	2950	2710	2480	2270	2060	1870
New F6555FS1	6.5x55 Swedish	140	9.07	Fusion	210	2530	2340	2150	1970	1800	1650
F270FS1	270 Win.	130	8.42	Fusion	210	3050	2810	2580	2370	2160	1970
F270FSLR1	270 Win.	145	9.40	Fusion	210	2200	2010	1830	-	-	-
F270FS2	270 Win.	150	9.72	Fusion	210	2850	2660	2470	2290	2120	1950
F270WSMFS1	270 Win. Short Magnum	150	9.72	Fusion	215	3080	2890	2700	2520	2350	2190
F708FS1	7mm-08 Rem.	140	9.07	Fusion	210	2850	2620	2390	2180	1980	1790
F280FS1	280 Rem.	140	9.07	Fusion	210	2990	2790	2610	2430	2260	2090
F7RFS1	7mm Rem. Magnum	150	9.72	Fusion	215	3050	2860	2680	2510	2340	2180
F7RFS2	7mm Rem. Magnum	175	11.34	Fusion	215	2760	2590	2430	2270	2120	1980
F7WSMFS1	7mm Win. Short Magnum	150	9.72	Fusion	215	3100	2910	2730	2560	2390	2230
F3030FS1	30-30 Win.	150	9.72	Fusion	210	2390	2090	1810	1550	1340	1170
F3030FS2	30-30 Win.	170	11.02	Fusion	210	2200	1950	1720	1510	1330	1180

These trajectory tables were calculated by computer using the best available data for each load. Trajectories are representative of the nominal behavior of each load at standard conditions (59°F temperature; barometric pressure of 29.53 inches; altitude at sea level).

FOR THE MODERN HUNTER.

Terminal performance is bolstered by superior ballistics and flight efficiency. This in turn maximizes range and accuracy. Still today, no conventional deer bullet delivers the devastating lethality of Fusion. It's the most advanced bullet in its class and the only one to meet the demand of the aggressive, technically sophisticated modern hunter. This year, we extend the line to include a .223 Rem, 260 Rem, 6.5 x 55 Swedish and 45-70 option.



Muzzle	ENERGY IN FOOT POUNDS (NEAREST 5 FOOT POUNDS)					WIND DRIFT					HEIGHT OF BULLET TRAJECTORY ABOVE OR BELOW LINE OF SIGHT IF ZEROED AT ⊕ YARDS SIGHTS 1.5 INCHES ABOVE BORE LINE										TEST BARREL LENGTH
											AVERAGE RANGE					LONG RANGE					
	100	200	300	400	500	100	200	300	400	500	50	100	200	300	50	100	200	300	400	500	
1240	1000	800	635	495	385	1.0	4.0	9.7	18.1	30.4	-0.2	⊕	-3.3	-12.6	0.6	1.6	⊕	-7.7	-22.8	-48.0	24
1875	1570	1310	1085	890	725	0.8	3.3	7.8	14.6	23.7	-0.2	⊕	-3.2	-11.9	0.6	1.6	⊕	-7.2	-21.2	-43.2	24
2365	2055	1780	1535	1315	1120	0.6	2.6	6.0	11.3	18.3	-0.2	⊕	-3.0	-11.2	0.5	1.5	⊕	-6.7	-19.5	-39.3	24
2320	1955	1640	1370	1130	930	0.8	3.3	7.6	14.2	23.0	-0.2	⊕	-3.2	-12.1	0.6	1.6	⊕	-7.3	-21.4	-43.4	24
1990	1695	1435	1210	1010	845	0.8	3.6	8.3	15.3	25.3	0.0	⊕	-4.9	-17.4	1.2	2.5	⊕	-9.9	-28.7	-58.7	24
2685	2280	1925	1620	1350	1115	0.7	3.0	7.0	13.1	21.3	-0.2	⊕	-2.9	-11.0	0.5	1.5	⊕	-6.6	-19.6	-39.8	24
1560	1295	1070	-	-	-	1.1	4.6	-	-	-	0.2	⊕	-7.1	-	-	-	-	-	-	-	24
2705	2345	2030	1745	1495	1270	0.7	2.8	6.5	12.0	19.3	-0.2	⊕	-3.4	-12.6	0.7	1.7	⊕	-7.4	-21.6	-43.3	24
3160	2775	2430	2120	1840	1590	0.5	2.3	5.4	9.9	16.2	-0.3	⊕	-2.7	-10.2	0.4	1.4	⊕	-6.1	-17.6	-35.6	24
2525	2125	1780	1480	1220	995	0.9	3.4	8.0	14.9	24.3	-0.2	⊕	-3.6	-13.3	0.7	1.8	⊕	-7.9	-23.2	-47.2	24
2780	2425	2115	1830	1580	1355	0.6	2.5	5.8	10.7	17.5	-0.2	⊕	-3.0	-11.0	0.5	1.5	⊕	-6.5	-19.1	-38.5	24
3100	2725	2390	2090	1820	1580	0.5	2.3	5.4	9.8	16.0	-0.3	⊕	-2.8	-10.4	0.4	1.4	⊕	-6.2	-17.9	-36.1	24
2960	2610	2295	2010	1750	1520	0.7	2.5	5.8	10.8	17.4	-0.1	⊕	-3.6	-13.2	0.8	1.8	⊕	-7.8	-22.3	-44.5	24
3200	2820	2480	2175	1900	1650	0.5	2.2	5.2	9.5	15.4	-0.3	⊕	-2.6	-9.9	0.4	1.3	⊕	-6.0	-17.2	-34.7	24
1900	1450	1085	805	595	455	1.6	6.6	16.2	30.8	51.1	0.1	⊕	-6.5	-23.9	1.7	3.2	⊕	-14.2	-42.8	-91.5	24
1825	1435	1115	860	665	525	1.4	6.3	15.1	28.5	46.7	0.3	⊕	-7.7	-27.2	2.2	3.9	⊕	-15.6	-46.8	-97.8	24

Shooters are cautioned that actual trajectories may differ due to variations in altitude, atmospheric conditions, guns, sights and ammunition.

RIFLE BALLISTICS CONTINUED

LOAD NO.	CALIBER	WEIGHT		BULLET STYLE	PRIMER NO	VELOCITY IN FEET PER SEC. (TO NEAREST 10 FPS)					
		GRAINS	GRAMS			Muzzle	100	200	300	400	500
F308FS1	308 Win. (7.62x51mm)	150	9.72	Fusion	210	2820	2600	2390	2190	2000	1820
F308FS2	308 Win. (7.62x51mm)	165	10.69	Fusion	210	2700	2500	2310	2130	1950	1790
F308FSLR1	308 Win. (7.62x51mm)	170	11.02	Fusion	210	2000	1740	1510	-	-	-
F308FS3	308 Win. (7.62x51mm)	180	11.66	Fusion	210	2600	2430	2260	2100	1950	1800
F3006FS1	30-06 Spring. (7.62x63mm)	150	9.72	Fusion	210	2900	2670	2460	2250	2060	1870
F3006FS2	30-06 Spring. (7.62x63mm)	165	10.69	Fusion	210	2790	2590	2400	2220	2040	1880
F3006FS3	30-06 Spring. (7.62x63mm)	180	11.66	Fusion	210	2700	2520	2350	2190	2030	1870
F3006FSLR1	30-06 Spring. (7.62x63mm)	170	11.02	Fusion	210	2000	1740	1510	-	-	-
F300WFS1	300 Win. Magnum	150	9.72	Fusion	215	3200	2960	2730	2510	2300	2110
F300WFS2	300 Win. Magnum	165	10.69	Fusion	215	3080	2870	2660	2460	2280	2100
F300WFS3	300 Win. Magnum	180	11.66	Fusion	215	2960	2770	2580	2400	2230	2070
F300WSMFS3	300 Win. Short Magnum	150	9.72	Fusion	215	3250	3010	2770	2560	2350	2150
F300WSMFS1	300 Win. Short Magnum	165	10.69	Fusion	215	3100	2890	2680	2480	2300	2120
F300WSMFS2	300 Win. Short Magnum	180	11.66	Fusion	215	2950	2760	2570	2390	2220	2060
F338FS1	338 Win. Magnum	225	14.58	Fusion	215	2850	2690	2530	2370	2220	2080
F338FFS2	338 Federal	200	12.96	Fusion	210	2660	2450	2250	2060	1870	1700
New F4570FS1	45-70 Government	300	19.44	Fusion	210	1850	1610	1400	1230	1100	1010

These trajectory tables were calculated by computer using the best available data for each load. Trajectories are representative of the nominal behavior of each load at standard conditions (59°F temperature; barometric pressure of 29.53 inches; altitude at sea level).

FUSION® LITE™: REDUCES RECOIL. NOT LETHALITY.

The same hard-hitting, buck-stopping technology goes into Fusion Lite™—it's just downloaded a bit. You look for a load with less recoil for a lot of reasons, but want the same result: a tagged trophy. You may be just learning or are just plain sick of fullhouse loads. So why you use Fusion Lite doesn't matter. We don't give you lighter bullets, just lighter recoil. Just deal it. And don't feel it. Because with standard bullet weights and half the recoil, you'll be comfortable, but your trophy whitetail sure won't.

Muzzle	ENERGY IN FOOT POUNDS (NEAREST 5 FOOT POUNDS)					WIND DRIFT					HEIGHT OF BULLET TRAJECTORY ABOVE OR BELOW LINE OF SIGHT IF ZEROED AT 100 YARDS SIGHTS 1.5 INCHES ABOVE BORE LINE										TEST BARREL LENGTH
	100	200	300	400	500	100	200	300	400	500	AVERAGE RANGE					LONG RANGE					
	50	100	200	300	400	500	50	100	200	300	400	500									
2650	2250	1905	1600	1335	1105	0.8	3.2	7.6	14.1	22.9	-0.2	⊕	-3.6	-13.4	0.7	1.8	⊕	-8.0	-23.1	-46.9	24
2670	2290	1955	1660	1400	1175	0.7	3.1	7.5	13.7	22.3	-0.1	⊕	-4.1	-14.7	0.9	2.0	⊕	-8.6	-24.8	-50.1	24
1510	1145	860	-	-	-	1.9	8.1	-	-	-	0.5	⊕	-10.0	-	-	-	-	-	-	-	24
2700	2355	2040	1765	1515	1295	0.6	2.9	6.9	12.6	20.4	-0.1	⊕	-4.4	-15.7	1.0	2.2	⊕	-9.1	-25.8	-51.9	24
2800	2380	2015	1695	1410	1170	0.8	3.1	7.4	13.7	22.2	-0.2	⊕	-3.4	-12.5	0.7	1.7	⊕	-7.5	-21.8	-44.1	24
2850	2460	2110	1800	1525	1285	0.8	2.9	7.0	12.9	20.7	-0.1	⊕	-3.7	-13.4	0.8	1.8	⊕	-7.9	-22.9	-46.0	24
2915	2540	2205	1905	1640	1405	0.7	2.7	6.6	12.1	19.4	-0.1	⊕	-4.0	-14.3	0.9	2.0	⊕	-8.4	-23.9	-47.8	24
1510	1145	860	-	-	-	1.9	8.1	-	-	-	0.5	⊕	-10.0	-	-	-	-	-	-	-	24
3410	2915	2480	2100	1770	1480	0.6	2.7	6.4	11.8	19.4	-0.3	⊕	-2.5	-9.6	0.3	1.2	⊕	-5.9	-17.3	-35.4	24
3475	3005	2590	2225	1900	1610	0.6	2.6	6.1	11.2	18.3	-0.3	⊕	-2.8	-10.4	0.4	1.4	⊕	-6.3	-18.3	-37.1	24
3500	3055	2660	2305	1985	1705	0.6	2.6	5.9	10.9	17.7	-0.2	⊕	-3.1	-11.3	0.6	1.5	⊕	-6.7	-19.5	-39.4	24
3520	3010	2565	2175	1830	1535	0.6	2.7	6.3	11.6	18.9	-0.3	⊕	-2.4	-9.3	0.3	1.2	⊕	-5.7	-16.7	-34.2	24
3520	3050	2630	2260	1930	1640	0.6	2.6	6.0	11.1	18.1	-0.3	⊕	-2.7	-10.2	0.4	1.4	⊕	-6.2	-18.0	-36.5	24
3480	3035	2640	2285	1970	1690	0.6	2.6	5.9	11.0	17.9	-0.2	⊕	-3.1	-11.4	0.6	1.5	⊕	-6.8	-19.7	-39.7	24
4060	3600	3190	2810	2470	2165	0.6	2.3	5.3	9.9	15.9	-0.2	⊕	-3.3	-12.0	0.7	1.7	⊕	-7.1	-20.4	-40.8	24
3140	2665	2245	1875	1555	1285	0.8	3.5	8.2	15.1	25.0	-0.1	⊕	-4.3	-15.6	1.0	2.2	⊕	-9.1	-26.2	-53.7	24
2280	1730	1305	1005	805	680	2.3	8.7	20.6	37.6	59.3	0.7	⊕	-11.9	-41.6	3.7	5.9	⊕	-23.8	-70.9	-146.5	24

Shooters are cautioned that actual trajectories may differ due to variations in altitude, atmospheric conditions, guns, sights and ammunition.

LOAD NO.	CALIBER	WEIGHT		BULLET STYLE	PRIMER NO	VELOCITY IN FEET PER SEC. (TO NEAREST 10 FPS)					
		GRAINS	GRAMS			Muzzle	100	200	300	400	500
F270FSLR1	270 Win.	145	9.40	Fusion	210	2200	2010	1830	-	-	-
F308FSLR1	308 Win. (7.62x51mm)	170	11.02	Fusion	210	2000	1740	1510	-	-	-
F3006FSLR1	30-06 Spring. (7.62x63mm)	170	11.02	Fusion	210	2000	1740	1510	-	-	-

FUSION LITE vs. FUSION HALF THE RECOIL

FUSION LITE

30-06 170 GR.

FUSION

30-06 180 GR.

0 15 30
FT. LBS.



FUSION® HANDGUN: DIFFERENT

The most devastating deer bullet in its class carries all of its centerfire rifle attributes to its handgun ammunition. These loads feature velocities, bullet weights and Fusion® technology optimized for the short-range, maximum impact requirements of handgun deer hunters. New this year, we introduce a 460 and 500 S&W load. Like the others, these new offerings are loaded to a velocities perfect for deer. Plus, they aren't as stout as some of the other loads available, making accurate, well placed shots in the field a reality.

HANDGUN BALLISTICS

LOAD NO.	CALIBER	WEIGHT		BULLET-STYLE	PRIMER NO	VELOCITY IN FEET PER SEC. (TO NEAREST 10 FPS)				
		Grains	Grams			Muzzle	25	50	75	100
F357FS1	357 Mag.	158	10.24	Fusion	100	1240	1190	1140	1100	1060
F41FS1	41 Rem. Mag.	210	13.61	Fusion	150	1230	1170	1120	1080	1040
F44FS1	44 Rem. Mag.	240	15.55	Fusion	150	1290	1220	1160	1110	1070
F454FS1	454 Casull	260	16.85	Fusion	150	1350	1270	1190	1130	1080
New F460FS1	460 S&W	260	16.85	Fusion	210	1600	1500	1400	1310	1230
New F500FS1	500 S&W	275	17.82	Fusion	210	1600	1490	1380	1290	1210

V = Vented Barrel

These trajectory tables were calculated by computer using the best available data for each load. Trajectories are representative of the nominal behavior of each load at standard conditions (59°F temperature; barometric pressure of 29.53 inches; altitude at sea level). Shooters are cautioned that actual trajectories may differ due to variations in altitude, atmospheric conditions, guns, sights and ammunition.

FUSION® SHOTGUN SLUGS: EXTEND RANGE. HIT HARD.

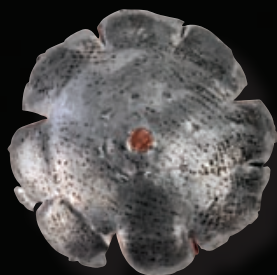
The creation of Fusion® shotgun slugs has made shotgunners a part of this deer-optimized technology. Now you can find the same unequaled energy and deer devastation in your favorite rifled-barrel shotgun. Stationary or stalking, be the most effective shotgunner in the woods.

SHOTGUN SLUG BALLISTICS

LOAD NO.	GAUGE	SHELL LENGTH		SLUG TYPE	SLUG WEIGHT		VELOCITY IN FEET PER SECOND (To Nearest 10 FPS)					
		Inches	MM		Ounces	Grains	Muzzle	25	50	75	100	125
F151 FS	12	3	76	Fusion Sabot Slug	3/4	325	1850	1750	1650	1550	1460	1380
F154 FS	12	2-3/4	70	Fusion Sabot Slug	3/4	325	1850	1750	1650	1550	1460	1380

PLATFORM. SAME RESULT.

	ENERGY IN FOOT POUNDS (NEAREST 5 FOOT POUNDS)					TRAJECTORY (SIGHTS .9 INCHES ABOVE BORE LINE)				TEST BARREL
	Muzzle	25	50	75	100	25	50	75	100	
	540	495	455	425	395	⊕	-0.6	-3.0	-7.1	4-V
	705	640	585	545	505	⊕	-0.7	-3.1	-7.3	4-V
	885	795	720	655	605	⊕	-0.6	-2.7	-6.7	4-V
	1050	925	820	735	670	⊕	-0.5	-2.4	-6.1	5.7-V
	1480	1290	1125	990	870	⊕	-0.1	-1.3	-3.7	8.4-V
	1565	1350	1170	1020	890	⊕	-0.1	-1.3	-3.8	8.4-V



	ENERGY IN FOOT-POUNDS (To nearest 5 foot-pounds)						HEIGHT OF SLUG TRAJECTORY IN INCHES ABOVE OR BELOW LINE OF SIGHT IF ZEROED AT ⊕ YARDS. SIGHT .5 INCHES ABOVE BORE LINE.					TEST BARREL LENGTH INCHES
	Muzzle	25	50	75	100	125	25	50	75	100	125	
	2495	2220	1975	1750	1550	1380	0.8	1.3	1.1	⊕	-2.2	30
	2495	2220	1975	1750	1550	1380	0.8	1.3	1.1	⊕	-2.2	30

MUZZLE TO BREECH. A VITAL-ZONE RAMROD.

You load your heart-stopping projectile from the muzzle. Now you can harness the energy of Fusion® muzzleloader sabot slugs. Late season means more skilled scouting. Less response from the rattle. More challenge. More excitement. Fusion technology gives .50 caliber crush-rib sabots reason to seat themselves at the breech of your T/C. The energy has spread to a .50-cal concoction that uses the same superior technology that makes all Fusion projectiles the most accurate and deadly deer ammunition in their class. A deep snow buck has called your number. Get in the game.



FUSION® PRIMER. IGNITE THE ENERGY.

No ignition. No recognition. The Fusion® muzzleloader primer is specially formulated for the tough conditions faced in the late season. Soaking wet. Low visibility. Fusion primers ignite the energy and deal the heat. Every time. Industry-leading muzzleloader gurus Thompson Center Arms worked directly with us to develop the ultimate ignition. Get it. Gun it. Deal the heat.

FIREARM	LOAD NO.	CALIBER	WEIGHT GRAINS
IN-LINE MUZZLELOADER	F50FSML1	50	240
IN-LINE MUZZLELOADER	F50FSML2	50	260
IN-LINE MUZZLELOADER	F50FSML3	50	300
FIREARM	LOAD NO.	DESCRIPTION	
IN-LINE MUZZLELOADER	F209FSML	209 MUZZLELOADING PRIMER	

IT'S ALL ABOUT ATTITUDE.

Find your Fusion® gear here. Look and feel good whether you are in the field or out on the town. Visit www.fusionammo.com to order your gear today.



GUT PILE T-SHIRT

Size: (M-3xl)
Color: Black
Price: \$10.00



T-SHIRT

Size: (M-3xl)
Color: Black
Price: \$10.00



SKULL CAP

Size: One Size
Color: Orange/Black
Price: \$10.00



BASEBALL CAP

Size: One size
Color: Black
Price: \$10.00



LADIES TANK TOP

Size: (M-xl)
Color: Black
Price: \$16.00



HOODED SWEAT SHIRT

Size: (M-3xl)
Color: Black
Price: \$42.00



FLEECE JACKET

Size: (M-2xl)
Color: Black
Price: \$47.00

To place orders by mail, send completed order form with payment to:

OMCM Embroidery & Design, Inc.
2355 Station Parkway NW
Anoka, MN 55304

Tel: 877-872-7006 Fax: 763-767-2961

Email: customerservice@omcmembroidery.com

FOR ORDER FORMS AND COMPLETE S&H INFORMATION please visit www.fusionammo.com

(All Shipments are restricted to the continental US. Sorry no C.O.D orders accepted. Please allow 4-6 weeks for Delivery)





COMMERCIAL PRODUCTS

ATK Commercial Products features a unique collection of brands that gives shooting and outdoor enthusiasts everything they need in one place. From ammunition,

optics and reloading equipment to gun cleaning chemicals and accessories, we offer advanced, high-performance products. Look for these leading brands:



Technically Superior by Design

www.alliantpowder.com
1-800-276-9337



www.outers-guncare.com
1-800-635-7656



www.blazer-ammo.com
1-866-286-7436



www.redfield-mounts.com
1-800-635-7656



Shooters Ridge
www.shootersridge.com
1-800-635-7656



FEDERAL
PREMIUM
AMMUNITION

www.federalpremium.com
1-800-322-2342



www.estatecartridge.com
1-800-322-2342



www.cci-ammunition.com
1-866-286-7436



www.speer-bullets.com
1-866-286-7436



www.ram-line.com
1-800-635-7656



www.speer-ammo.com
1-866-286-7436



www.weaveroptics.com
1-800-635-7656



www.championtarget.com
1-800-635-7656
1-800-441-4971 (Clays)



www.gunslick.com
1-800-635-7656



www.nitrexoptics.com
1-800-635-7656



www.rcbs.com
1-800-533-5000



www.fusionammo.com
1-800-322-2342

We proudly support: Ducks Unlimited, The Foundation for North American Wild Sheep, Izaak Walton League of America, The National Wild Turkey Federation, Pheasants Forever, The Rocky Mountain Elk Foundation, Safari Club International, Whitetails Unlimited, The Ruffed Grouse Society, Becoming an Outdoors Woman, Women in The Outdoors, 4-H Shooting Sports Program, The Boy Scouts of America, International Hunter Education Association and Civilian Marksmanship Program.

Federal Cartridge Co. • 900 Ehlen Drive • Anoka, MN 55303
©2008 F.C.C. • Printed in U.S.A.

For technical questions call Product Service at 1-800-322-2342 • www.fusionammo.com

Fusion is a trademark registered with the U.S. Patent Office.