



EXTREME TM

SHOCK

**You Shall Rise Up on the Wings of Eagles....
& the Gates of Hell Shall not Prevail Against You**



In 1992, CEO Jeff Mullins founded Mullins Ammunition, Inc. in the mountains of Southwest Virginia.

Jeff Mullins was a ranked IPSC Competition Shooter, who realized a need for quality ammunition for use in competition and thus began loading his own ammo. Soon friends and fellow competitors began approaching him to load ammunition for them. The company was born!

In 1996, Jeff Mullins began to experiment with frangible projectiles. After examining the flaws inherent to existing frangible ammunition, Mullins Ammunition set about to perfect the world's premier frangible, lead-free self-defense hunting round.

After 4 years of research & development, Extreme Shock was released to the general public in 2000. Mr. Mullins has traveled the world over giving demonstrations of Extreme Shock. In the demonstrations, the most common phrase said about Extreme Shock is, "I don't believe it". However, after the demonstration, the comment changes to, "Wow! Absolutely Amazing! It does work!"

The R&D Team at Mullins Ammunition has developed & tested hundreds and hundreds of rounds which has led to the most unique round of ammunition produced in the world. It is this constant pursuit of perfection that has produced the bullets that now bear the Extreme Shock name.

There is no other bullet in the world that can deliver the enhanced safety and performance like;



EXTREME SHOCK™

Why it Works

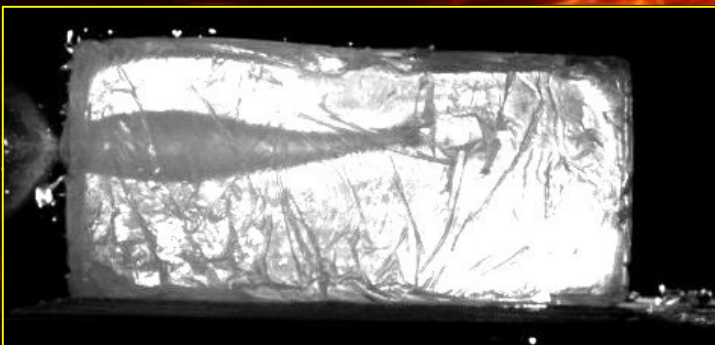
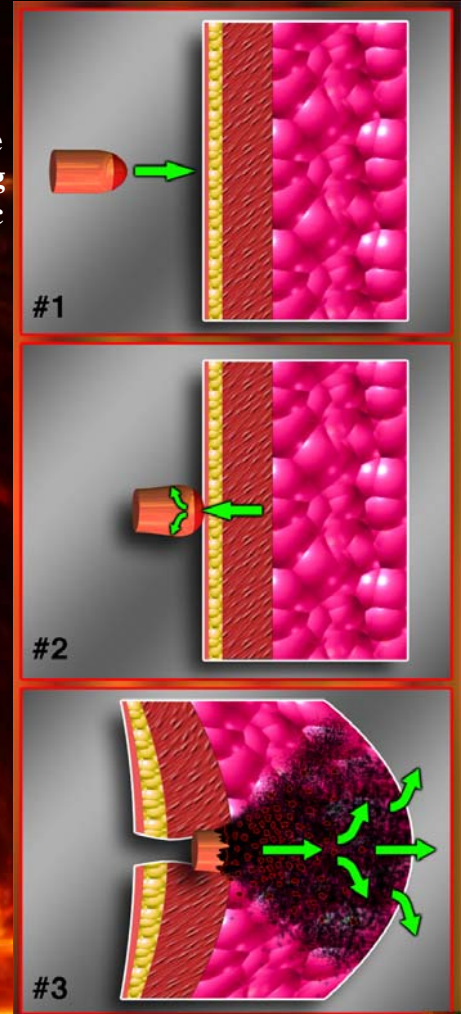
The key to making any bullet perform is it's ability to expand when it strikes fluid. Typically, most soft targets contain 80 to 85% fluid. Unlike lead that needs velocity to penetrate which creates the possibility of a shoot-through, the density of tungsten gives the Extreme Shock round the ability to penetrate through thick hide, heavy clothing and bone. Conventional hollow point bullets clog with fibers and fabric as they pass through clothing which diminishes expansion and causes unreliable bullet performance

Once inside the target, the powder metal core is designed to begin fragmenting at an alarmingly fast rate which produces the controlled penetration.

As the core expands into the soft tissue, 100% of the bullet energy is transferred into the target. The expanding powder particles pick up the surrounding damaged tissue and shoves it forward., exponentially increasing the now huge frontal shockwave of the projectile.

As the expanding tungsten particles releases thier last amounts of kinetic energy, they create literally thousands of wound channels.

This in turn creates so much hydrostatic shock trauma that it instantly shuts down the central nervous system.



The above gel block is impacted with a standard 9mm Jacketed Hollow-Point 115-grain projectile. Note the narrow damage channel



The above block is impacted with an Extreme Shock 9mm 115-grain Enhanced Penetration Round. Note the massive damage channel and fragmentation

TO ORDER CALL:1-877-337-6772

EXTREME SHOCK

Handgun Ammunition



The Air Freedom Round (AFR) was specifically engineered for tactical entry teams and for the U.S. Air Marshals for use on airplanes, where it is crucial to contain rounds fired inside of a structure. The frangible characteristics of the Air Freedom Round makes it an ideal round for concealed weapons carry in urban settings. The AFR will fragment through standard sheetrock walls inside a home, therefore reducing possible liabilities if the intended target is missed.

The Air Freedom bullet will fragment on any surface that would cause a lead bullet to ricochet. What round is in your home defense firearm?

Available in: 9mm, .38 SPL, .357 SIG, .357 Msgnum, 10mm, .40 S&W, .45ACP, & .45 GAP

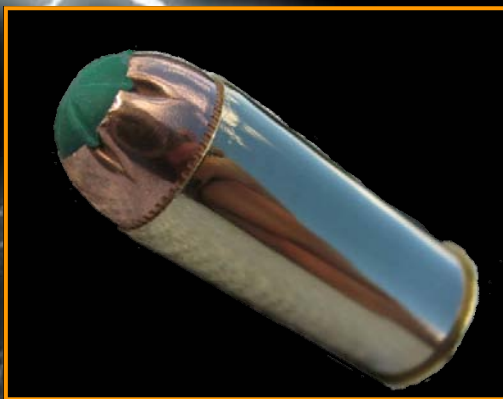


The Enhanced Penetration Round (EPR) is engineered for applications where greater penetration is a must. The EPR has greater terminal success through automobile glass, light sheet metal, or wood. This round has the ability to penetrate thick skin and dense bone, then fragment once inside the softer tissue of the target. The deep penetrating characteristics of the EPR makes this ideal round for street duty officers, as well as serious handgun hunters.

This round will fragment on any surface that would cause a lead bullet to ricochet. Place your order today!

NOTE: This is not an Armor Piercing Round!

Available in: .32ACP, .380, 9mm, .38 SPL, .357 SIG, .357 Msgnum, 10mm, 40 S&W, .44 Magnum, .45ACP, .45 Long Colt & .45 GAP



The Copper Training/Tactical round (CT-2) is specifically engineered to offer all the same desirable characteristics of Extreme Shock's compressed Tungsten core ammunition. The CT-2 is the economical solution to a Firing Range's lead nightmare. This round will allow ranges to operate on expensive target steel without fear of steel damage or injury from ricochet. The CT-2 projectile consists of a patented compressed copper powder blend of the highest quality. Each round is encased in a copper jacket and topped with a green ballistic tip to aid in fragmentation and identification. Loaded to safe SAAMI pressure specifications, the CT-2 is safer for use in firearms than other brands of frangible or training ammunition. An excellent value— Order now!

Available in: 9mm, .38 SPL, .357 SIG, .357 Msgnum, .40 S&W, .45ACP, & .45 GAP

For more information, visit our website: www.extremeshockusa.net

Specialty Shotgun Shells

EXTREME SHOCK

Extreme Shock Shotgun rounds are engineered for exacting applications. Each type of round is developed with a specific task in mind. These rounds are produced using the same frangible technology that our other rounds are based on. Extreme Shock shotgun rounds are engineered to perform specific tasks in the Law Enforcement, Home Defense, and Hunting Communities.

SHOCK SHOT is set apart from all other shotshells on the market due to the unique shape and composition of the shot. The shot is cylindrical in shape, and comprised of the same compressed Tungsten powder blend that makes up the Extreme Shock frangible rounds. SHOCK SHOT is currently available in #6, #4, and #00 in both 12 gauge.

In .410 shotshells the #00 & #6 is available.

BD50J (Big Damage) Sabot Slug is designed for fully rifled shotgun barrels. Staying true to the Extreme Shock tradition, the BD50J Slug is Lead-Free and Frangible. The BD50J is a 300 grain, .50 caliber, copper jacketed, compressed Tungsten slug, engineered to fragment inside of soft tissue. With the velocity of 2,000 feet per second, the BD50 delivers a massive 2,886 ft. lbs. of kinetic energy.

The BD50J is produced in both Tungsten and Copper compressed powder cores. The Copper core being the most economically priced. The Tungsten is more dense and will deliver longer down range performance. But within it's respected range, the Copper core will perform as well as the Tungsten. Enhance your hunting experience—Order today!

RPNO (Rip Padlocks a New One) is Extreme Shock's answer to the unsaboted slug. Originally designed for law enforcement as a door breaching round, this slug is 1 ounce of our patented compressed Tungsten core. Designed to transfer 100% of it's kinetic energy into the target instead of passing through.

A compressed copper core variant is also available.

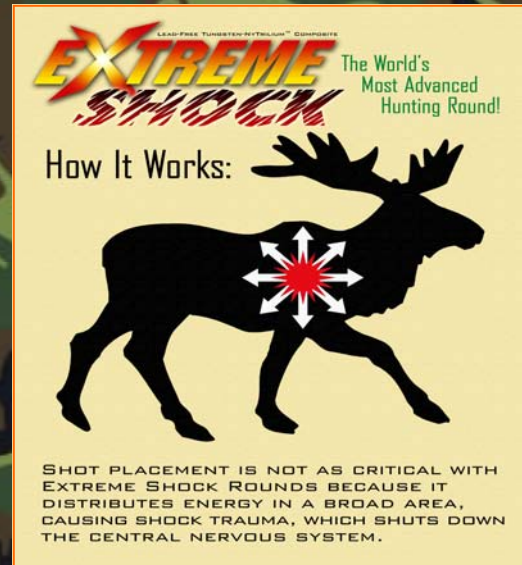
Why wait?? Purchase yours today!



TO ORDER CALL: 1-877-337-6772



Mr. Jeff Mullins with a 2,300 lbs Water Buffalo harvested with a single 7.62x39mm 160grain KalaShock round.



Ms. Judy Rhodes and Ms. Pearl Silvey (Divas in the Outdoors) with a 450lb boar

Ms. Judy Rhodes (Diva in the Outdoors) with her trophy sized Nilgai brought down with a single .300 WinMag Extreme Shock round.



The Huntmaster of the above hunt recommended a .360 or larger caliber rifle due to size and skittishness of the Nilgai. However, I have enough confidence in Extreme Shock ammunition that I decided to not heed the recommendation and brought a .300 Winchester Magnum. I succeeded in bringing down a 800+ pound Nilgai with a single shot. My confidence in Extreme Shock ammo is well deserved!

- Ms. Judy Rhodes

On the same hunt, another hunter used three handloaded .30-378 Barnes bullets to do what one Extreme Shock .300 WINMAG did. Which bullet would you want in your rifle??

For more information, visit our website: www.extremeshockusa.net

Rifle Ammunition

EXTREME SHOCKTM

EXTREME SHOCK has accomplished what other bullet makers have been trying to do for years - Design a hunting bullet that gives 3-4 inches of clean penetration into the animal before fragmenting to release 100% of it's energy into the soft tissue. EXTREME SHOCK is designed to penetrate through thick hide and dense bone then fragment when it impacts soft organic tissue and fluids. Unlike other bullets that pass through, EXTREME SHOCK bullets deliver 100% of their kinetic energy inside the target, making for a safe, fast, and humane harvest with no loss of meat.

The **Fragmenting High Velocity (FHVL)** round is designed for applications where farther, more accurate shots are required. The FHVL's explosive entry characteristics make it a favorite among the hunting community, because shot placement is not as critical in order to take down large game. Stock up now before your next hunt!

Available in: .223 55gr, .223 62gr, .223 75gr, 7.62x39mm 137gr & .50 BMG 675gr

The **Heavy-Projectile, Boat-Tail (HPBT)** which is a streamlined base for our FHVL bullets. A vacuum is created when air strata moving at high speed passes over the end of a bullet. The streamlined boat tail design aims to eliminate this drag-inducing vacuum by allowing the air to flow alongside the surface of the tapering end, thus eliminating the need for air to turn around the 90-degree angle normally formed by the end of shaped bullets. The resulting aerodynamic advantage is currently seen as the optimum shape for rifle technology.

Available in: .308 168gr, .30-06 168gr. & .300 WINMAG 168gr

The **Round Shock Bullet (RSB)** exhibits superior performance in the target or through the intervening brush. Empirical testing clearly shows that the round nose bullet at moderate velocities travels through brush with minimal deflection. The RSB configuration also has an advantage in performance on the target by delivering more expansion. The RSB is made with controlled expansion features which will work with absolute reliability. Give it a try!

Available in: .308 & 7.62x39mm

The **Copper Training/Tactical (CT-2)** projectile consists of a patented compressed copper powder blend of the highest quality you expect from Extreme Shock. Both inexpensive and extremely effective, the CT-2 is the ideal bullet when cost efficiency is a priority.

Available in: .223 55gr & .308 140gr



TO ORDER CALL: 1-877-337-6772

S.R.T. Ammunition

EXTREME SHOCK™



The Short-Ranged Tactical (SRT) is a reduced velocity, heavier projectile designed for greater soft tissue penetration, while still causing only minimal damage to metal structures. The SRT will not damage steel targets in training facilities, and is completely lead-free, making it an excellent choice for a training round as well as having myriad of tactical applications. The 55grain SRT round has a muzzle velocity of 2,400fps with 703 ft lbs of energy!!

The F.B.I. has adopted this round for all their training facilities.

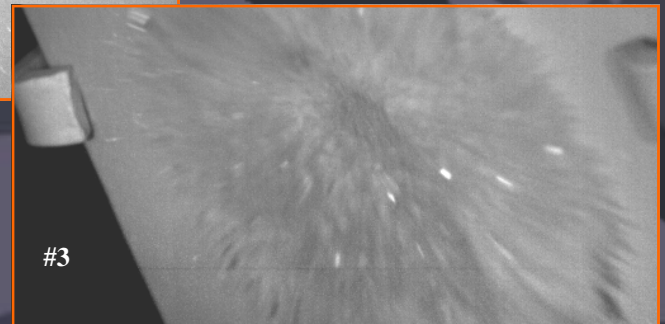
Available in: 55grain & 100grain .223 (5.56mm)



The round impacts the plate & the core disintegrates.



No particles are going back toward to shooter.



Notice the even, circular dispersement of the tungsten particles with no damage to the steel plate.



The KALASHOCK round was developed in association with select Eastern European Special Forces for the AK-47, the most popular firearm in the world. Designed to ensure safety, efficiency, and lethality, the compressed Tungsten core delivers stopping power without over penetration which is common to the full metal jacketed rounds.

Available in: 160 grain 7.62x39mm

EXTREMETM **SHOCK** **SubSonic Ammunition**

The Advanced Subsonic Product (ASP) was developed to meet the needs of today's covert special operations teams, giving them astonishing stealth capability. ASP is designed for the Colt M4 family of weapons, but can be adapted to other weapons systems. The ASP needs a suppressor attached to make it function in full and semi auto mode. ASP will fire in both semi and full auto mode, is not temperature sensitive, and requires no modification to the host weapon.

NOTE: This round will only function properly with a barrel that has a 1 in 7 twist.

Only Available in: .223 100gr (5.56mm)

The Silent Warrior (SW) was designed to eliminate the "ballistic crack", which is the loud and very sharp sound produced by the bullet itself as it travels downrange. The Silent warriors are a heavier grain bullet which compensates for the loss of energy by keeping the bullet below the speed of sound. Comprised of our patented Tungsten core, encased in a copper jacket, the Silent Warrior is designed to expend 100% of it's kinetic energy into the target thus increasing the effectiveness of the round.

Available in: 9mm, .45ACP, 7.62x39mm, .308, & .50BMG

The COVERT round has all the excellent properties of the ASP round, but with an even quieter attribute. This projectile was designed not to work the action of the M4 rifle. When stealth and silence are of the utmost importance, then the COVERT round is the projectile of choice.

NOTE: This round will only function properly with a barrel that has a 1 in 7 twist.

Only Available in: .223 100gr (5.56mm)



To Order Call: 1-877-337-6772



Ballistic Tables

CARTRIDGE	BULLET WT/GR	BULLET TYPE	TEST BARREL LENGTH	VELOCITY (MUZZLE)	ENERGY /FT LBS
ENHANCED PENETRATION ROUND (EPR)					
.32 ACP Enhanced Penetration (EPR)	60	Round Nosed (plastic tip)	2 inch	962 fps	123 ft lbs
.380 Enhanced Penetration (EPR)	70	Round Nosed (plastic tip)	3 inch	1,080 fps	181 ft lbs
9mm Enhanced Penetration (EPR)	115	Round Nosed (plastic tip)	4 inch	1,287 fps	422 ft lbs
.38 SPL Enhanced Penetration (EPR)	115	Round Nosed (plastic tip)	6 inch	1,125 fps	323 ft lbs
.357 SIG Enhanced Penetration (EPR)	115	Round Nosed (plastic tip)	4 inch	1,315 fps	441 ft lbs
.357 MAG Enhanced Penetration (EPR)	115	Round Nosed (plastic tip)	6 inch	1,490 fps	566 ft lbs
10mm Enhanced Penetration (EPR)	165	Round Nosed (plastic tip)	5 inch	1,286 fps	605 ft lbs
.40 S&W Enhanced Penetration (EPR)	165	Round Nosed (plastic tip)	4 inch	1,050 fps	403 ft lbs
.44 MAG T-MAX Enhanced Penetration (EPR)	185	Round Nosed (plastic tip)	5 inch	1,361 fps	760 ft lbs
.45 LC Enhanced Penetration (EPR)	185	Round Nosed (plastic tip)	5 inch	1,300 fps	694 ft lbs
.45 ACP Enhanced Penetration (EPR)	185	Round Nosed (plastic tip)	4.5 inch	1,145 fps	538 ft lbs
.45 GAP Enhanced Penetration (EPR)	185	Round Nosed (plastic tip)	3.5 inch	1,050 fps	452 ft lbs
AIR FREEDOM ROUND (AFR)					
9mm Air Freedom (AFR)	85	Round Nosed (plastic tip)	5 inch	1,639 fps	506 ft lbs
.38 SPL Air Freedom (AFR)	85	Round Nosed (plastic tip)	6 inch	950 fps	170 ft lbs
.357 SIG Air Freedom (AFR)	85	Round Nosed (plastic tip)	4.5 inch	1,484 fps	415 ft lbs
.357 MAG Air Freedom (AFR)	85	Round Nosed (plastic tip)	6 inch	1,650 fps	513 ft lbs
10mm Air Freedom (AFR)	100	Round Nosed (plastic tip)	5 inch	1,580 fps	554 ft lbs
40 S&W Air Freedom (AFR)	100	Round Nosed (plastic tip)	5 inch	1,391 fps	429 ft lbs
.45 ACP Air Freedom (AFR)	125	Round Nosed (plastic tip)	4 inch	1,350 fps	505 ft lbs
.45 GAP Air Freedom (AFR)	125	Round Nosed (plastic tip)	3.5 inch	1,305 fps	472 ft lbs
FRAGMENTING HIGH-VELOCITY (FHVL) ROUND					
.223 Fragmenting High Velocity (FHVL)	55	Flat Base, Open Tip Spitzer	21 inch	3,167 fps	1,224 ft lbs
.223 Fragmenting High Velocity (FHVL)	62	Flat Base, Open Tip Spitzer	21 inch	2,920 fps	1,173 ft lbs
.223 Fragmenting High Velocity (FHVL)	75	Flat Base, Open Tip Spitzer	21 inch	2,820 fps	1,324 ft lbs
7.62 X 39mm Fragmenting High Velocity (FHVL)	137	Flat Base Round Nose	20 inch	2,150 fps	1,405 ft lbs
.308 BTHP	168	Boat Tail Hollow Point Spitzer	18.5 inch	2,468 fps	2,271 ft lbs
30-06 Fragmenting High Velocity (FHVL)	168	Boat Tail Hollow Point Spitzer	22 inch	2,714 fps	2,747 ft lbs
.300 WIN MAG FHVL	168	Boat Tail Hollow Point Spitzer	26 inch	2,973 fps	3,296 ft lbs
.50 BMG Fragmenting High Velocity (FHVL)	675	Flat Base, Open Tip Spitzer	26 inch	2,815 fps	11,874 ft lbs

Specifications listed are current as of February 2009. Specifications may change without notice

CARTRIDGE	BULLET WT/GR	BULLET TYPE	TEST BAR- REL LENGTH	VELOCITY (MUZZLE)	ENERGY /FT LBS
SHOTGUN SHELLS					
12 GA SHOCKSHOT	33.5	Cylindrical Shot #4 & #6	24 inch	1,145 fps	3,024 ft lbs
12 GA 00BUCK SHOCKSHOT	25.31	Cylindrical Shot (9 shot)	24 inch	1,160 fps	2,333 ft lbs
12 GA RPNO	392	Cylindrical Slug	24 inch	1200 fps	1,918 ft lbs
12 GA BD-50J	19.6	Jacketed Conical Slug	24 inch	1950 fps	5,105 ft lbs
SHORT-RANGED TACTICAL (SRT)					
.223 SRT Short-Range Tactical	55	Flat Base, Open Tip Spitzer	14.5 inch	2,400 fps	703 ft lbs
.223 SRT Short-Range Tactical	100	Flat Base Round Nose	14.5 inch	1,750 fps	679 ft lbs
7.62x39mm Kalashock	200	Round Nosed, Flat Base	20 inch	1,800 fps	1,150 ft lbs
SUBSONIC AMMUNITION					
9mm Silent Warrior	137	Round Nosed (plastic tip)	5 inch	950 fps	274 ft lbs
.45 ACP Silent Warrior	230	Round Nosed (plastic tip)	4 inch	950 fps	467 ft lbs
.223 Covert (Non_Cycling)	100	Flat Base, Round Nose	14.5 inch	891 fps	176 ft lbs
.223 ASP Adv Subsonic Products (Full-Cycling)	100	Flat Base, Round Nose	14.5 inch	993 fps	218 ft lbs
7.62x39mm Silent Warrior	200	Round Nose, Flat Base	20 inch	1,038 fps	478 ft lbs
.308 Silent Warrior	160	Round Nosed (plastic tip)	18 inch	985 fps	344 ft lbs
.308 Silent Warrior	200	Round Nosed (plastic tip)	18 inch	950 fps	343 ft lbs
.50 BMG	675	Flat Base, Open Tip Spitzer	36 inch	975 fps	1,425ft lbs
COPPER TRAINING/TACTICAL (CT-2) HANDGUN ROUNDS					
9mm (CT2)	90	Round Nosed (plastic tip)	4 inch	1,449 fps	420 ft lbs
.38 SPL (CT2)	90	Round Nosed (plastic tip)	6 inch	1,575 fps	496 ft lbs
.357 SIG (CT2)	90	Round Nosed (plastic tip)	4 inch	1,325 fps	351 ft lbs
.357 MAG (CT2)	90	Round Nosed (plastic tip)	6 inch	1,723 fps	593 ft lbs
.40 S&W (CT2)	100	Round Nosed (plastic tip)	4 inch	1,497 fps	498 ft lbs
.45 ACP (CT2)	150	Round Nosed (plastic tip)	4.5 inch	1,146 fps	437 ft lbs
.45 GAP (CT2)	150	Round Nosed (plastic tip)	3.5 inch	1,121 fps	418 ft lbs
COPPER TRAINING/TACTICAL (CT-2) RIFLE ROUNDS					
.223 Fragmenting High Velocity (FHVLT)	55	Flat Base, Open Tip Spitzer	21 inch	2,500 fps	763 ft lbs
.308 BTHP	168	Boat Tail Hollow Point Spitzer	18.5 inch	2,750 fps	2,351 ft lbs
COPPER TRAINING/TACTICAL (CT-2) SHOTGUN SHELLS					
12 GA SHOCKSHOT #4 & #6	20.38	Cylindrical Shot #4 & #6	24 inch	1,215 fps	2,039 ft lbs
12 GA 00BUCK SHOCKSHOT	21.32	Cylindrical Shot (9 shot)	24 inch	1,250 fps	2,280 ft lbs
12 GA RPNO	295	Cylindrical Slug	24 inch	1,400 fps	1,283 ft lbs
12 GA BD-50J	18.9	Jacketed Conical Slug	24 inch	2,000 fps	2,886 ft lbs
410 GA SHOCKSHOT #6	5.68	Cylindrical Shot #6	24 inch	1,320 fps	678 ft lbs
410 GA 00BUCK SHOCKSHOT	10.60	Cylindrical Shot #00	24 inch	1,300 fps	1,234 ft lbs

Specifications listed are current as of February 2009. Specifications may change without notice

**EXTREME
SHOCK**

X-KOTE LUBRICANTS

ROD & REEL CLEANER & LUBRICANT

X-KOTE ROD & REEL CLEANER & LUBRICANT is a super premium, synthetic cleaner and lubricant formulated specifically for Heavy Duty salt water reels and harsh marine environments. It is made from an advanced technology synthetic base and blended with the finest additives to protect, lubricate, and clean all types of rods and reels.

GT-X GUN CLEANER & LUBE

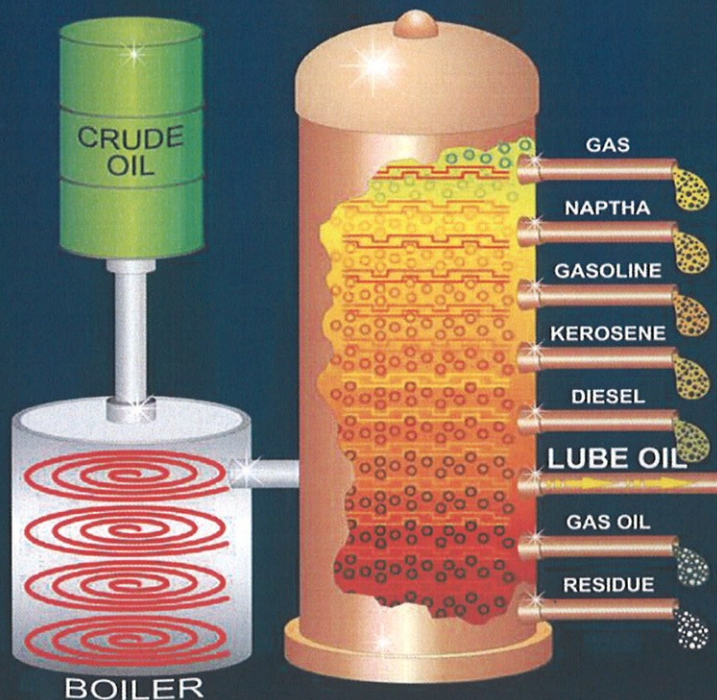
X-KOTE GT-X GUN CLEANER & LUBRICANT is an extremely high-grade, synthetic gun cleaner and lubricant. It is formulated from an advanced technology synthetic base and blended with the finest additives, to clean, lubricate, and protect against rust and corrosion better than any other lubricant.

X-KOTE GT-X removes carbon deposits, cleans as it lubricates, then bonds to create a barrier that protects against the harshest elements.

Seasoned shooters will notice smoother weapon action and reduced recoil.

INDUSTRIAL CONCENTRATED ADDITIVE

A revolutionary, new, industrial strength, concentrated additive, X-KOTE INDUSTRIAL CONCENTRATED ADDITIVE greatly enhances the life of contacting metal parts. X-KOTE penetrates the molecules of metal surfaces and fills in the microscopic pores and impurities to produce a super smooth coating. X-KOTE INDUSTRIAL is compatible with most lubricants, hydraulic fluids, cutting fluids, and other industrial oils. X-KOTE INDUSTRIAL dramatically reduces friction for any metal parts requiring lubrication. X-KOTE INDUSTRIAL is proven in gasoline and diesel engines, transmissions (automatic and standard), differentials and power steering. It reduces heat and vibration in many types of gear boxes, and especially hydraulic systems.



X-KOTE lubricants are refined and processed until only the highest quality lube oil is achieved. Unlike other lubricating oils, X-KOTE's molecules are uniform in size and structure, allowing them to penetrate and bond to all types of metal parts.



X-KOTE IS REFINED &
ADDITIVES INTRODUCED

NEW!

EXTREME SHOCK

X-KOTE C₂

CERAMIC COATING

A Para-Ordnance .45 was treated with the X-Kote C₂ then packed in a bucket of sand. 8,500 rounds of ammunition was fired through the firearm with 0% mechanical malfunctions

The .45 is packed full of sand, including the magwell before being knocked out.



Notice the heat discoloration of the slide tip from rapid fire. It even melted the plastic tub we set the pistol on!



After 5,350 rounds, the gun was taken down and inspected. No excessive wear noted. The gun was cleaned of carbon with a copper brush, no additional X-Kote C₂ was used. The gun was reassembled and fired and additional 3,150 rounds!!



(877) 337-6772

EXTREME SHOCK

EXTREME SHOCK USA
182 CAMP JACOB RD
CLINTWOOD, VA 24228

Phone: 877-337-6772

Fax: 276-926-6092

www.extremeshockusa.net



PROUDLY MADE IN THE U.S.A.



www.extremeshockusa.net

Extreme Shock reserves the right to change or modify it's products without notice.