

2007 EXPLORER



BOLDMOVES



Do more in Explorer

Never satisfied to view the world from an easy chair, Explorer owners get out there and make life happen. They create their own adventures. Challenge themselves with unique goals. And then surpass them. Just like Explorer.

For 2007, Explorer starts with a remarkably stiff frame that helps it deliver an even quieter ride than the previous generation, plus the option of a spirited 292-hp 4.6L V8 engine and class-exclusive* 6-speed automatic transmission. New offerings include its available power-deployable running boards, an optional heated windshield, and a standard audio input jack that allows you to listen to your personal MP3 player through any of Explorer's sound systems. Get ready to do more in the 2007 Ford Explorer.

*Truck-based Midsize SUV class.

Contents

Power & Performance	2
Capability	3
Safety & Security	4
Driver Controls	5
Interior Flexibility	6
Specifications	7-10



Refine your travels

"This Explorer stands out most for its impressive lack of interior noise and vibration. We'd venture this is the smoothest, quietest body-on-frame truck ever" So says *AutoWeek*.^{*} And we say, the difference is in the details. Explorer's smooth, quiet ride stems in part from its solid foundation, a fully boxed frame that's a remarkable 63% stiffer than that of the previous generation.

Thoughtful engineering went into details like the sound-deadening carpet and headliner materials, the roof structure, overall powertrain operation, and even the contour of its large sideview mirrors. All of these elements help give Explorer its impressively quiet, comfortable ride – one that's quieter than the previous generation on rough roads and on coarse surfaces. A 4-wheel independent suspension with monotube shocks also helps Explorer hug the road.



Powerful choices Explorer's standard 4.0L SOHC V6 engine pumps out 210 hp and 254 lb.-ft. of torque. That's more torque than Jeep® Grand Cherokee's V6. Matched with a 5-speed automatic transmission, the V6 delivers an EPA-estimated 15 mpg in the city and 21 on the highway (4x2 models).

For those seeking even more grunt, the optional 4.6L 3-valve V8 engine and its first-in-class 6-speed automatic transmission give you 292 hp. That's more than you can get from Nissan Pathfinder or Toyota 4Runner. And they deliver more mpg on the highway than 4Runner's V8 engine.^{**} When properly equipped, Explorer 4x2 with the V8 engine can tow up to 7290 lbs., which leaves your recreational options wide open.



^{*}August 15, 2005.

^{**}4Runner 4x2 gets 20 mpg hwy.; 4x4 gets 19 mpg hwy. based on 2006 EPA fuel economy estimates.



Expand your horizons

Ford Explorer 4x4 has what it takes to transport you (and quite a few traveling companions) to spectacular new destinations. With Explorer's optional Control Trac® 4-wheel-drive system, the touch of a button can take you from everyday driving in the 4x4 AUTO setting to serious off-road venturing in 4x4 LOW. When you need extra traction, such as on icy roads or in snow or off-road situations, choose 4x4 HIGH.

You can count on the extreme flexibility of Explorer's 2nd-generation Independent Rear Suspension (IRS) to help you tackle rough terrain and uneven road surfaces in a remarkably civilized manner. In fact, *Car and Driver** said, "... the Explorer's ride surpassed the [Jeep®] Commander's on every surface we sampled, a happy side effect of its nontaxing IRS."



On the level Explorer's 7-passenger models feature a flatter loadfloor than Chevy TrailBlazer, Dodge Durango, Honda Pilot, Nissan Pathfinder or Toyota 4Runner. With the 2nd- and 3rd-row seats folded flat, this Explorer can carry up to 83.7 cu. ft. of cargo.

Cargo and load capacity limited by weight and weight distribution.



Ironman® Package This available package recognizes our relationship with the famed Ironman competition. A unique blackout headlamp treatment, black grille and many other special accents are employed to help achieve the tough exterior look, while the interior features unique leather-trimmed seating in Black and Stone.

*November 2005.



Increase your confidence

Ford Explorer has earned 5-Star ratings in the National Highway Traffic Safety Administration's (NHTSA) frontal and side-impact crash tests – and it's designed to meet all known U.S. government frontal and side-impact crash requirements through the 2010 model year.

Explorer also has standard front-seat side airbags and our class-exclusive Intelligent Safety System™ (ISS). The ISS processes information from a suite of sophisticated sensors and adjusts the performance of Explorer's first-in-class adaptive load-limiting safety belt retractors, driver and front-passenger airbags, and first-in-class adaptive steering column to enhance your protection in the event of certain frontal collisions.

Our patented Safety Canopy™ System with its large, 2nd-generation side-curtain airbags is now standard on Eddie Bauer and Limited.



AdvanceTrac® with RSC® Standard on every Explorer, our electronic stability enhancement system, AdvanceTrac with class-exclusive RSC (Roll Stability Control), actually measures what other systems can only estimate or ignore. It features a vehicle-roll motion sensor in addition to AdvanceTrac's Anti-lock Brake System (ABS), traction control and yaw control. RSC uses the sensor to directly measure the vehicle's roll-rate at least 100 times every second, which helps determine when and how the system will apply individual brakes and modify engine power to help keep all 4 wheels firmly planted.

Remember that even advanced technology cannot overcome the laws of physics. It's always possible to lose control of a vehicle due to inappropriate driver input for the conditions. For more information on AdvanceTrac with RSC, visit www.fordvehicles.com.



Elevate your view

Explorer's interior experience starts with its progressively styled controls. As you grasp the newly redesigned door pull, the substantial steering wheel, or the sporty floor shifter, you'll feel at ease and in command. Explorer's optional new heated windshield can make things even easier by clearing your view in about half the time it takes a conventional forced-air defroster. And for your listening pleasure, every Explorer features a new auxiliary audio input jack and an MP3-capable CD player or changer. Plus, SIRIUS Satellite Radio* can be added to any of Explorer's sound systems to give you over 125 channels of coast-to-coast music, news, sports and entertainment.

Talk about taking care of you, the optional DVD-based Navigation System with intersection programming actually calls out upcoming street names. And the optional Rear-Seat DVD Entertainment System gets a larger 8" color LCD screen this year.



Open-air freedom Explorer's optional power moonroof includes a sunshade and a convenient one-touch-open/-close feature for quick access to fresh air. This everyday luxury is accompanied by a mini-overhead console and illuminated visor vanity mirrors.

SIRIUS
SATELLITE RADIO

*SIRIUS is not available in Alaska or Hawaii. See your Ford Dealer or contact SIRIUS at 1-888-539-7474 for more information.



Explore in utmost comfort

Whether you're running everyday errands or whisking the family away on vacation, you'll feel properly pampered in Explorer. The 10-way power driver seat, standard on Eddie Bauer and Limited and optional on XLT, includes power-adjustable lumbar and recline features. When the optional 3rd-row seat is chosen, with or without the class-exclusive PowerFold™ option, the 2nd-row seats fold and tumble to open up access to the 3rd row.

Explorer's 2nd-row seats also recline* for added comfort, an especially nice feature for your passengers. And for those times when the 2nd and 3rd rows aren't in use, Explorer's articulating head restraints can be folded forward to help improve rearward visibility.

New for 2007, the redesigned front door pulls are now within easy reach and the interior panel trim helps reduce reflective glare on those bright, sunny days. So get out there and start exploring.

Power up (or down) The optional 50/50 split, fold-flat 3rd-row seat is available with your choice of PowerFold or manual-fold operation. On models so equipped, the PowerFold seat buttons can be found within easy reach, just inside the rear cargo area. For added comfort and convenience, the seat sits 1.75" higher than on the previous generation, improving forward vision. A release on the back of the 2nd-row seat makes it easy for 3rd-row passengers to exit on their own.

Choose your ride Explorer is available in your choice of 3 seating configurations. To achieve the 7-passenger capacity, you'll need the 2nd-row 60/40 split seat and the optional 3rd-row 50/50 split seat (with or without PowerFold). Available Quad Bucket Seating (including 2nd-row center console) combines with the 3rd-row 50/50 split seat to create comfy 6-passenger seating. And Explorer's standard 5-passenger seating setup includes the 2nd-row 60/40 split seat.

*6- and 7-passenger models only.

SPECIFICATIONS

STANDARD FEATURES

MECHANICAL

4.0L SOHC V6 engine with 5-speed automatic transmission
 4-wheel Anti-lock Brake System (ABS)
 130-amp alternator
 3.55 axle ratio
 Class II trailer tow hitch receiver
 Control Trac® 4-wheel-drive system (4x4 models only)
 Independent front and rear suspension
 Maintenance-free 72-amp battery

SAFETY/SECURITY

Adaptive driver and front-passenger airbags*
 Adaptive energy-absorbing steering column
 AdvanceTrac® with RSC® (Roll Stability Control)
 Battery saver
 Belt-Minder® safety belt reminder
 Front-Passenger Sensing System
 Front-seat side airbags
 Illuminated entry
 Lower anchors and tether anchors for child-safety seats (LATCH) in 2nd-row outboard seats
 Safety belts with pretensioners and adaptive load-limiting retractors (adjustable height in 1st row)
 SecurILock® passive anti-theft system
 Tire Pressure Monitoring System

INTERIOR

1st-row dome/map lights
 2-line message center with outside temperature display
 2nd-row 60/40 split-folding bench with recline**
 Air conditioning
 AM/FM stereo/single-CD player with MP3 capability and audio input jack
 Cargo Management System
 Coat hooks — 4
 Cruise control
 Floor console with floor shifter
 Grab handles — 1 for front passenger, 2 in 2nd row
 Illuminated glove compartment
 Loadfloor tie-down hooks — 4
 Manual day/night rearview mirror
 Power points — 2
 Power windows with one-touch-down driver-side feature
 Visor vanity mirrors

EXTERIOR

16" painted-aluminum wheels
 P235/70R16 all-season BSW tires (4x2; OWL on 4x4)
 Body-color door handles
 Bumpers and wheel-lip moldings — Black molded-in-color
 Fog lamps
 Grille — Chrome, 4-bar design
 One-piece liftgate with flip-open rear window
 Privacy glass (rear doors, rear quarter windows and liftgate window)
 Power sideview mirrors
 Rear-window defroster
 Remote keyless-entry system with 2 key fobs
 Roof side rails — Black
 Windshield wipers — Intermittent front (speed-sensitive) and rear

*Always wear your safety belt and secure children in the rear seat.
 **6- and 7-passenger models only.

Comparisons based on 2007 competitive models, publicly available information and Ford certification data at time of printing. Some features discussed may be optional. Vehicles shown may contain optional equipment. Features shown may be offered only in combination with other options or subject to additional ordering requirements or limitations. Dimensions shown may vary due to optional features and/or production variability. Following publication of the catalog, certain changes in standard equipment, options and the like, or product delays may have occurred which would not be included in these pages. Your Ford Dealer is the best source for up-to-date information. Ford Division reserves the right to change product specifications at any time without incurring obligations.

FEATURES & OPTIONS

XLT — 4x2 or 4x4			
EDDIE BAUER — 4x2 or 4x4			
LIMITED — 4x2 or 4x4			
MECHANICAL			
○	○	○	4.6L 3-valve V8 with 6-speed automatic transmission
●	—	—	16" painted-aluminum wheels
—	●	—	17" painted-aluminum wheels
—	—	●	18" machined-aluminum wheels
—	○	○	18" chrome-clad aluminum wheels
●	—	—	P235/70R16 all-season BSW tires (XLT 4x2)
●	—	—	P235/70R16 all-season OWL tires (XLT 4x4)
○	●	—	P245/65R17 all-season OWL tires
○	○	●	P235/65R18 all-season OWL tires
○	○	○	Non-limited-slip rear axle — 3.73 ratio ¹
SAFETY/SECURITY			
○	●	●	Safety Canopy™ System
SEATING			
●	—	—	Cloth trim — 1st-row bucket seats with 2-way adjustable head restraints and driver-side manual lumbar
○	●	—	Cloth trim — 1st-row bucket seats with 2-way adjustable head restraints and 6-way power driver seat with manual lumbar
○	●	—	Leather trim — 1st-row bucket seats including 10-way power driver seat with power lumbar and recline (vinyl 3rd row, if equipped)
—	○	—	Leather trim — 1st-row bucket seats with Preferred Suede® inserts and 10-way power driver seat with power lumbar and recline (vinyl and Preferred Suede-trimmed 2nd row; vinyl 3rd row, if equipped)
—	○	●	Leather trim — 1st-row heated bucket seats with 10-way power driver seat, including power lumbar, recline and memory, and 6-way power passenger seat with manual lumbar (vinyl 3rd row, if equipped)
—	○	—	Leather trim — 1st-row heated bucket seats with Preferred Suede inserts and 10-way power driver seat, including power lumbar, recline and memory, and 6-way power passenger seat with manual lumbar (vinyl 3rd row, if equipped)
—	○	○	Quad Bucket Seating — Includes 2nd-row bucket seats and floor console (requires 3rd-row seat)
○	○	●	3rd-row 50/50 split fold-flat bench seat — Manual
○	○	○	3rd-row 50/50 split fold-flat bench seat — PowerFold™

● Standard ○ Select Availability ○ Optional — Not Available

¹Requires and only available with Class III/IV Trailer Tow Package with 4.0L V6.

Preferred Suede is a registered trademark of Milliken & Company.



FEATURES & OPTIONS

		XLT – 4x2 or 4x4	
		EDDIE BAUER – 4x2 or 4x4	
		LIMITED – 4x2 or 4x4	
		INTERIOR	
—	●	●	4-line message center
●	●	—	Air conditioning – Manual
—	⓪	●	Air conditioning – Dual-zone Electronic Automatic Temperature Control
○	○	●	Auxiliary rear climate control (requires 3rd-row seat)
○	○	●	Audiophile® Sound System with AM/FM stereo/6-disc in-dash CD changer with MP3 capability, audio input jack, subwoofer and 190 watts
○	○	○	Cargo shade – Rear (not available with 3rd-row seat)
○	●	●	Convenience Group – Includes auto-dimming rearview mirror, automatic headlamps keyless-entry keypad and message center compass
—	○	—	Eddie Bauer Luxury Package – Includes 1st-row bucket seats in choice of leather-trimmed or two-tone leather-trimmed with Preferred Suede® inserts; 10-way power, heated driver seat with power lumbar and memory feature; 6-way power, heated passenger seat; Dual-zone Electronic Automatic Temperature Control; power, heated sideview mirrors with security approach lamps; secondary steering wheel-mounted audio and climate controls; and Audiophile Sound System
○	—	—	Ironman® Package – Includes unique two-tone Black and Stone 10-way power driver and manual passenger, heated front leather-trimmed seats; floor mats with Ironman logo in 1st and 2nd rows; unique finish on instrument panel and switch plates; unique 18" machined-aluminum wheels with Black painted pockets; P235/65R18 all-season OWL tires; Black roof rack with Black crossbars; unique Black grille, bodyside cladding and wheel-lip moldings; unique front and rear fascias with Ironman logo; removable hitch cover; amber-colored fog lamps; and headlamps with blackout treatment (not available with XLT Leather Heated Seats Package and/or Reverse Sensing System)
○	○	○	Navigation System (includes Audiophile Sound System)
○	○	○	Power-adjustable pedals (not available with driver seat with memory)
○	○	○	Power moonroof with sun shade and one-touch-open/-close feature
○	○	○	Rear-Seat DVD Entertainment System (requires Convenience Group)
○	○	○	SIRIUS Satellite Radio – Includes 6-month subscription and roof-mounted antenna*
—	○	○	Ultimate Convenience Group – Includes power-adjustable pedals with memory settings and Universal Garage Door Opener (requires Eddie Bauer Luxury Package on Eddie Bauer)
○	—	—	XLT Comfort Group – Includes 6-way power driver seat, sideview mirrors with security approach lamps, illuminated visors, overhead console, rear dome/map light and leather-wrapped steering wheel (10-way power driver and manual passenger, heated front leather-trimmed seats included if Ironman Package or XLT Leather Heated Seats Package is ordered)
○	—	—	XLT Leather Heated Seats Package – Includes leather-trimmed 1st-row heated bucket seats with 10-way power driver seat including power lumbar and heated sideview mirrors with security approach lamps (not available with Ironman Package)
		EXTERIOR	
—	●	●	Automatic headlamps
●	—	—	Bumpers and wheel-lip moldings – Black molded-in-color
—	●	—	Bumpers and wheel-lip moldings – Pueblo Gold-painted
—	—	●	Bumpers and wheel-lip moldings – Body-color-painted
○	○	○	Class III/IV Trailer Tow Package – Includes 7-pin trailer wiring harness and connector, 7-pin to 4-pin adapter, and frame-mounted hitch receiver (3.73 non-limited-slip axle required and only available with Class III/IV Trailer Tow Package with 4.0L V6)
●	—	●	Grille – Chrome, 4-bar design
—	●	—	Grille – Chrome, 3-bar design with nostrils
○	○	○	Heated windshield (not available with Navigation System)
○	○	●	Reverse Sensing System (not available with Ironman Package)
●	—	—	Roof side rails – Black
—	●	—	Roof side rails – Silver-painted with Black end caps
—	—	●	Roof side rails – Chrome with Black end caps
○	○	○	Roof-rail crossbars
○	●	●	Running boards – Black on XLT, Pueblo Gold on Eddie Bauer, body-color on Limited
—	○	○	Running boards – Power-deployable; accent color on Eddie Bauer, chrome accent on Limited
○	—	○	Step bars – Black on XLT, chrome on Limited (not available with XLT Appearance Package)
○	—	—	XLT Appearance Package – Includes body-color bumpers and wheel-lip moldings, 17" machined-aluminum wheels, and unique film on door trim

*Not available in Alaska or Hawaii. See your Ford Dealer or contact SIRIUS at 1-888-539-7474 for more information.

Audiophile is a registered trademark of Audiophile, Inc.

WHEELS



16" Painted-Aluminum
Standard on XLT



17" Machined-Aluminum
Standard on XLT
Appearance Package



17" Painted-Aluminum
Standard on Eddie Bauer



18" Machined-Aluminum
with Painted Pockets
Standard on Ironman Package



18" Machined-Aluminum
Standard on Limited



18" Chrome-Clad Aluminum
Optional on Eddie Bauer
and Limited

ENGINES

	4.0L SOHC V6	4.6L 3V V8
Horsepower (hp @ rpm)	210 @ 5100	292 @ 5750
Torque (lb.-ft. @ rpm)	254 @ 3700	300 @ 3950

TRAILER TOWING APPLICATIONS

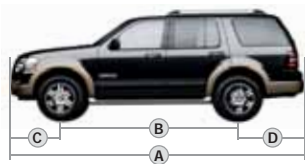
AXLE RATIO	MAXIMUM LOADED TRAILER WEIGHT (lbs.)	
	4.0L V6	4.6L V8
3.55	4x2 Class II	3500
	4x4 Class II	3500
3.73	4x2 Class III/IV	5370
	4x4 Class III/IV	5200
3.55	4x2 Class II	3500
	4x4 Class II	3500
3.55	4x2 Class III/IV	7290**
	4x4 Class III/IV	7115**

Maximum weights shown are for properly equipped vehicles with required equipment and a 150-lb. driver. Weight of additional options, equipment, passengers and cargo must be deducted from this weight. For additional information, see your Ford Dealer.

Cargo and load capacity limited by weight and weight distribution.

**Deduct 500 lbs. when equipped with auxiliary rear climate control.

DIMENSIONS



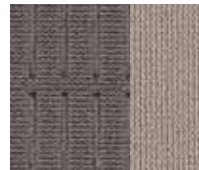
EXTERIOR	4x2/4x4
A. Overall length	193.4"
B. Wheelbase	113.7"
C. Overhang – Front	35.4"
D. Overhang – Rear	44.3"
E. Vehicle width (excl. mirrors)	73.7"
Vehicle width (incl. mirrors)	84.8"
Vehicle width (mirrors folded)	77.5"
F. Vehicle height (with options)	72.8"
G. Ground clearance (minimum running)	8.2"
H. Liftover height (curb)	31.4"
I. Ramp breakover angle	18.4°
J. Angle of approach	28.2°
K. Angle of departure	23.8°
INTERIOR	
1st Row	
Head room	39.8"
Shoulder room	59.0"
Hip room	55.4"
Leg room	42.4"
2nd Row	
Head room	38.7"
Shoulder room	58.9"
Hip room	55.5"
Leg room	36.9"
3rd Row (if equipped)	
Head room	37.4"
Shoulder room	53.1"
Hip room	45.3"
Leg room	34.9"
Maximum Cargo Volume (cu. ft.)	5 pass./7 pass.
Behind 1st row	85.8/83.7
Behind 2nd row	45.1/43.9
Behind 3rd row (if equipped)	—/13.6

Cargo and load capacity limited by weight and weight distribution.

INTERIORS



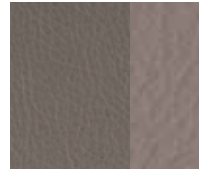
Camel Cloth
Standard on XLT



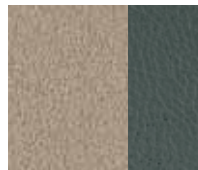
Stone Cloth
Standard on XLT



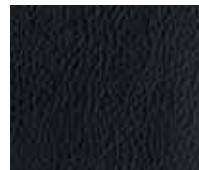
Camel Leather
Standard on Eddie Bauer
and Limited; Optional on XLT



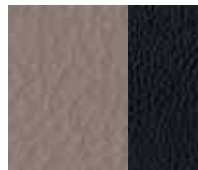
Stone Leather
Optional on XLT



Moss Leather with Camel
Preferred Suede® Inserts
Optional on Eddie Bauer



Charcoal Black Leather
Standard on Limited



Charcoal Black Leather
with Medium Light
Stone Inserts
Standard on XLT with
Ironman® Package

CAMEL

STONE

CHARCOAL BLACK

XLT

●	●	Oxford White
●	●	Pueblo Gold Metallic
●	●	Redfire Metallic
●	●	Dark Blue Pearl Metallic
●	●	Silver Birch Metallic
●	●	Dark Stone Metallic
●	●	Black
●	●	Carbon Metallic*

EDDIE BAUER

●		Oxford White
●		Redfire Metallic**
●		Dark Blue Pearl Metallic**
●		Dark Stone Metallic
●		Black
●		Carbon Metallic*
●		Dark Cherry Metallic

LIMITED

●	●	Pueblo Gold Metallic
	●	Silver Birch Metallic
●	●	Dark Stone Metallic
●	●	Black
●	●	Carbon Metallic
●	●	Dark Cherry Metallic
●	●	White Sand Tri-Coat Metallic*†

IRONMAN PACKAGE

	●	Oxford White
	●	Redfire Metallic
	●	Silver Birch Metallic
	●	Black
	●	Orange Frost Metallic*

*New for 2007. **Moss Leather with Camel Preferred Suede inserts not available with this exterior color. †Extra-cost option.

EPA-ESTIMATED FUEL ECONOMY

	4.0L SOHC V6	4.6L 3V V8
4x2 (mpg city/hwy.)	15/21	15/21
4x4 (mpg city/hwy.)	15/20	14/20

EXTERIORS



Oxford White



Pueblo Gold Metallic



Redfire Metallic



Dark Blue Pearl Metallic



Silver Birch Metallic



Dark Stone Metallic



Black



Carbon Metallic



Dark Cherry Metallic



White Sand Tri-Coat Metallic



Orange Frost Metallic*

*Available only on XLT with Ironman® Package. Ford uses clearcoat paint for beauty and protection. Colors shown are representative only. Not all colors are available on all models. See your dealer for actual paint/trim options. Vehicles shown may contain optional equipment.



New Vehicle Limited Warranty

We want your Ford Explorer ownership experience to be the best it can be. So under this warranty, your new vehicle comes with 3-year/36,000-mile Bumper-to-Bumper Coverage, 5-year/50,000-mile Safety Restraint Coverage, and 5-year/unlimited-mile Corrosion (Perforation) Coverage — all with no deductible. Please ask your Ford Dealer for a copy of this limited warranty.

For more assurance: There's now a 5-year/60,000-mile powertrain limited warranty that's fully transferable, has no deductible, and provides you with an additional 2 years or 24,000 miles of coverage — on select components, including the engine and transmission — beyond the standard 3-year/36,000-mile Bumper-to-Bumper Coverage. Plus, Roadside Assistance is extended to 5 years or 60,000 miles, so you have the security of knowing that help may be only a phone call away should you run out of fuel, lock yourself out of the vehicle, or need towing. Your Ford Dealer can provide complete details on all of these advantages.



Get the ride you want. Whether you plan to lease or finance, you'll find the choices that are right for you at Ford Credit. Ask your Ford Dealer for details, or check us out at www.fordcredit.com.



Get Ford Motor Company quality in your auto insurance. Our program offers industry-leading benefits and competitive rates. Call 1-877-367-3847, or visit us at www.fordvip.com for a no-obligation quote. Insurance offered by American Road Services Company (in CA, American Road Insurance Agency), a licensed agency and subsidiary of Ford Motor Company.



For a purchase or lease, the Ford **Extended Service Plan** (ESP) gives you "Peace-of-Mind" protection designed to cover key vehicle components and protect you from the cost of unexpected repairs. Ask your dealer for an ESP, the only service contract backed exclusively by Ford and honored at all Ford Lincoln Mercury dealerships.



Genuine Ford Accessories are designed and engineered specifically for Ford vehicles. Visit our website at www.fordaccessoriesstore.com to use the Accessorizer, and to learn about complete accessory details and purchase instructions.