



---

**B**  **SQUARE**®

---

SCOPE MOUNTS ♦ SHOOTING ACCESSORIES ♦ TOOLS



## 50 YEARS OF BRINGING SCOPES & GUNS TOGETHER

B-Square® has been manufacturing a full line of premium quality mounts, accessories, and tools for serious shooters for over 50 years. Known worldwide for its diverse selection and unique designs, B-Square® continues on with this tradition by introducing 18 new innovatively designed accessories for 2006. Take the time to peruse our catalog and find the perfect mount. We guarantee satisfaction and promise a perfect fit for any shooter regardless of firearm choice. Whether you love plinking, hunting or are serious about your law enforcement accessories, B-Square® sets the standard for accuracy when it comes to the perfect mount for your needs.

New for 2006, B-Square® introduces additions to its well-known airgun lineup, already diverse and outstanding

shotgun saddle mount collection, unique and innovative bipod offering, and—after working hand-in-hand with special operations teams around the United States—a practical, straightforward accessory lineup for the AR-15 that can't be beat.

When it comes to putting a mount on your firearm that you can trust, choose the rugged, lightweight and uncompromising craftsmanship of B-Square® products. We take pride in making it easy for you to hit the mark—whether it's giving you the absolute most accurate rings on the market, or helping you aim steady with a bipod. We care about designing Serious Products for Serious Shooters.

# Muzzle Direction



## This Direction Only

### **CATALOG DIRECTORY**

<i>Interlock™ Rings and Bases</i> .....	4-5
<i>Sport Utility and Airgun Rings</i> .....	6-7
<i>Tactical Accessories and Modern Military Mounts</i> .....	8-10
<i>Classic Military Mounts</i> .....	11
<i>Shotgun Scope Mounts</i> .....	12-13
<i>Airgun Mounts and Accessories</i> .....	14-15
<i>Sporting Rifle and Special Purpose Scope Mounts</i> .....	16-17
<i>Black Powder Scopes and Mounts</i> .....	18-19
<i>Centerfire and Rimfire Pistol Scope Mounts</i> .....	20-21
<i>Revolver Scope Mounts</i> .....	22-23
<i>Bipod Systems and Accessories</i> .....	24-25
<i>Gunsmithing/Specialty Tools</i> .....	26-30
<i>Lynx Steel Rings</i> .....	31

**NOTE:** *Items appearing in specifications boxes in blue are NEW items.*

**Simple Elevation Adjustment**

Adjusts with a twist of the ring.

**Windage Adjustment**

Provides perfect barrel alignment.

**Distinctive Wrap-Around Design**

Pulls scope down and into the cradle of the mount without pinching and damaging scope tubes.

**Split Collar**

Gimbals allow ring to tip forward or backward placing even pressure on your scope preventing scope bending from excessive stress.

**Steel Insert Recoil Key**

The secret to effective recoil reduction. Steel on aluminum prevents mount and ring damage even with heavy-duty magnum round abuse.

**Exceptional Clamping Strength**

Premium grade aircraft aluminum wrapped up in an ingenious design provide the solid foundation your scope needs for repeatable pinpoint accuracy.

**INCREDIBLE ADJUSTMENT AND ACCURACY FOR ANY FIREARM**

The distinctive, durable engineering of the B-Square® Wrap-Around design provides technology that guarantees the most finite adjustments in scope sighting available on the market today in a package that can withstand the fiercest recoil. All B-Square® scope rings are seriously strong with unparalleled, even clamping strength, and are carefully constructed from premium-grade aircraft aluminum.

For absolute precision shot-after-shot, B-Square® Interlock™ Adjustable Rings are the ring of choice. These outstanding rings feature not only windage adjustments, but also elevation adjustments—a B-Square® exclusive

design which allows the shooter to lock down his optics in perfect alignment with the barrel prior to making any fine-tune adjustments of the windage and elevation on the scope itself.

For a more simple and affordable design with all the strength of the Interlock Adjustable, try the B-Square® Interlock™ Fixed ring. Interlock Fixed rings offer the same steel insert recoil key and withstand the same magnum beating as the Adjustable, only in a more simple and affordable design—a nice package when extreme accuracy isn't quite as critical.

## INTERLOCK™ FIXED RINGS

- B-Square® unique, wrap-around design
- Exceptional clamping strength
- Steel recoil key for magnum use
- Split collar feature
- Hex key included



## WSSM INTERLOCK™ ONE-PIECE BASES

- Now available for Browning A-Bolt and Winchester WSSM
- Provides perfect scope alignment
- One-piece design provides unsurpassed rigid support for scope
- With added cross-slots for maximum eye relief

Winchester WSSM



## INTERLOCK™ ONE-PIECE BASES

Bring the long-trusted strength of a premium grade aircraft aluminum to your favorite firearm. InterLock™ one-piece bases are known for their clean contours and perfect fit. Features include multiple cross slots for maximum eye relief. This mounting system promises perfect scope alignment time after time.



Remington 700

Savage LA

Marlin 336

## INTERLOCK™ RINGS

DESCRIPTION	FINISH	MODEL NUMBER
<b>InterLock™ Fixed Rings</b>		
1" x Standard Dovetail (with recoil blade)	BL	10042
	SS	10043
30mm x Standard Dovetail (with recoil blade)	BL	10048
1" x 11mm Dovetail	BL	10039
1" x .22 Dovetail	BL	10040
<b>InterLock™ Adjustable Rings</b>		
1" x Standard Dovetail	BL	10201
30mm x Standard Dovetail	BL	10230
1" x 11mm Dovetail	BL	10101
30mm x 11mm Dovetail	BL	10130

## INTERLOCK™ ONE-PIECE BASES

DESCRIPTION	FINISH	MODEL NUMBER
<b>InterLock™ One-Piece Bases (Without rings)</b>		
Browning A-Bolt L/A	BL	15520
	SS	15521
Browning A-Bolt S/A	BL	15522
	SS	15523
Browning A-Bolt WSSM	BL	15538
	SS	15539
Browning BAR, BAR II, BR BAR	BL	15526
BSA Monarch S/A	BL	15500
BSA Monarch L/A	BL	15502
Marlin MR7 L/A	BL	15510
Marlin 336, 1894, 1895, Camp 9/45 carbine	BL	45536
Marlin Model 39	BL	45539
Mauser 98 LARGE RING	BL	15010
Mauser 91-96 SMALL RING	BL	15012
Remington 7	BL	15508
Remington 700, 722, 725, 40x S/A	BL	15500
	SS	15501
Remington 700, 722, 725, 40x L/A	BL	15502
	SS	15503
Remington XP-100	BL	15500
	SS	15501
Remington 4, 6, 74, 7400, 7600	BL	15504
Ruger 10/22	BL	15514
	SS	15515
Savage 110, 111, 112, 116 L/A RH	BL	15516
Savage 10, 11, 12, 16 S/A	BL	15556
	SS	15557
Savage Short Action Mount for Accu-trigger RH	BL	15550
	SS	15551
Savage Long Action Mount for Accu-trigger RH	BL	15552
	SS	15553
Savage Stevens	BL	15552
	SS	15553
Weatherby Mark V	BL	15502
	SS	15503
Winchester 70, 670, 770 L/A	BL	15510
	SS	15511
Winchester 70, 670, 770 S/A	BL	15512
Winchester WSSM	BL	15532
	SS	15533



### Now You See 'Em...

We've prepped our Sport Utility Rings for the field with the hottest camo finishes. Now available in standard Mossy Oak® and NEW Mossy Oak® Break-Up pattern, these affordable, steady sport utility rings are the practical choice for your firearm.

### SPORT UTILITY RINGS

DESCRIPTION	FINISH	MODEL NUMBER
<b>Sport Utility Rings</b>		
1" x Standard Dovetail Low	BL	20052
1" x Standard Dovetail Low	SS	20053
1" x Standard Dovetail Med	BL	20054
1" x Standard Dovetail Med	SS	20055
1" x Standard Dovetail High	BL	20056
1" x Standard Dovetail High	SS	20057
1" for .22 and Airguns Low	BL	27052
1" for .22 and Airguns Low	SS	27053
1" for .22 and Airguns Med	BL	27054
1" for .22 and Airguns Med	SS	27055
1" for .22 and Airguns High	BL	27056
1" for .22 and Airguns High	SS	27057
30mm x Standard Dovetail Low	BL	20062
30mm x Standard Dovetail Low	SS	20063
30mm x Standard Dovetail Med	BL	20064
30mm x Standard Dovetail Med	SS	20065
30mm x Standard Dovetail High	BL	20066
30mm x Standard Dovetail High	SS	20067
30mm for .22 and Airguns Low	BL	27062
30mm for .22 and Airguns Low	SS	27063
30mm for .22 and Airguns Med	BL	27064
30mm for .22 and Airguns Med	SS	27065
30mm for .22 and Airguns High	BL	27066
30mm for .22 and Airguns High	SS	27067
<b>Camouflage Sport Utility Rings</b>		
1" x Standard Dovetail Low Mossy Oak® Breakup	CAMO	20052MB
1" x Standard Dovetail Low New Mossy Oak® Breakup	CAMO	20052NMB



Standard Dovetail Low



Standard Dovetail Medium



Standard Dovetail High

### SPORT UTILITY RINGS

- Wrap-around design
- Lightweight, affordable strength
- Maximum scope retention and twice the clamping area
- Perfect for low to medium calibers
- Hex-key included



11 mm Adjustable Airgun

### INTERLOCK™ ADJUSTABLE AIRGUN RINGS

- Windage & elevation adjustments
- Auto pitch angulation
- Available in 1" or 30mm to eliminate scope stress
- Black matte finish



11 mm Fixed Airgun

### INTERLOCK™ FIXED AIRGUN RINGS

- Unique wrap-around configuration
- Wide, 4-screw cap design
- Standard height, accommodates popular scopes with the larger AO lens
- Reversible solid steel recoil key with multiple pin sizes for custom fit
- Black matte finish



Precision Airgun Mount

### INTERLOCK™ AA 11 MM MOUNT

- Extra long base to accommodate longer target scopes
- Complete windage and elevation adjustments
- "Auto-pitch" angulation feature eliminates scope stress
- Black matte finish



Airport Mount (long base)

### AIRSPORT AIRGUN MOUNT

- Fits 9.5mm to 13mm dovetails
- Dual position clamping system
- Unique threaded recoil stop
- 4-screw wrap-around ring cap
- Recessed screws
- Twice the clamping area of conventional rings
- Superior scope retention
- Black matte finish

### PRECISION AIRGUN MOUNTS & RINGS

DESCRIPTION	FINISH	MODEL NUMBER
<b>AA 11mm Air Gun Base</b>		
AA Air Gun MOUNT x 1" Ring	BL	17101
AA Air Gun MOUNT x 30mm	BL	17130
AA Ultra High Air Gun MOUNT x 1"	BL	17702
AA High Air Gun MOUNT x 1"	BL	17701
AA Ultra High Riser Kit	BL	17710
AA High Riser Kit	BL	17705
<b>11mm Adjustable Air Gun Rings</b>		
1" x 11mm Dovetail	BL	10101
30mm X 11mm Dovetail	BL	10130
1" X 11mm Dovetail adjustable high rings	BL	10037
30mm x 11mm Dovetail adjustable rings	BL	10137
<b>11mm Fixed Air Gun Rings</b>		
1"x11mm Dovetail	BL	10039
1"x11mm Dovetail	SS	10050
30mm x 11mm Dovetail (w/Recoil Blade)	BL	10045
30mm x 11mm Dovetail (w/Recoil Blade)	SS	10051
<b>12mm Adjustable Air Gun Mounts &amp; Rings</b>		
AA 12mm Mount x 1" Adjustable Ring	BL	17585
AA12mm Mount x 30mm Adjustable Ring	BL	17587
12mm 1" AA Adjustable rings	BL	10585
<b>13mm Adjustable Air Gun Mounts &amp; Rings</b>		
AA 13mm "MAXI-GRIP" mount x1" Adjustable Ring	BL	17501
AA 13mm "MAXI-GRIP" mount x30mm Adjustable Ring	BL	17530
<b>Webley &amp; Scott/Kodiak "AA" Base with Integral Adjustable Rings</b>		
AA Mount x 1" Adjustable Rings	BL	17401
AA Mount x 30mm Adjustable Rings	BL	17430
AA High Post Mount	BL	17420
<b>One-Piece Air Gun Bases</b>		
<b>Benjamin Sheridan</b>		
Blue Streak/Silver Streak (Weaver™ style base)	BL	17010
Baikal IZH-46	BL	17900
Walther 94 Lever Action	BL	17030
Colt 1911 C02 Pistol	SS	17091

## TACTICAL ACCESSORIES & MODERN MILITARY MOUNTS



A.

### ACCESSORY TRI-RINGS

- Packaged as a pair
- Hold all standard 1" tubes
- Fit up to four accessories or three accessories and a scope
- Firmly grip all standard dovetail and Picatinny rails



B.

### LIGHT LASER RING

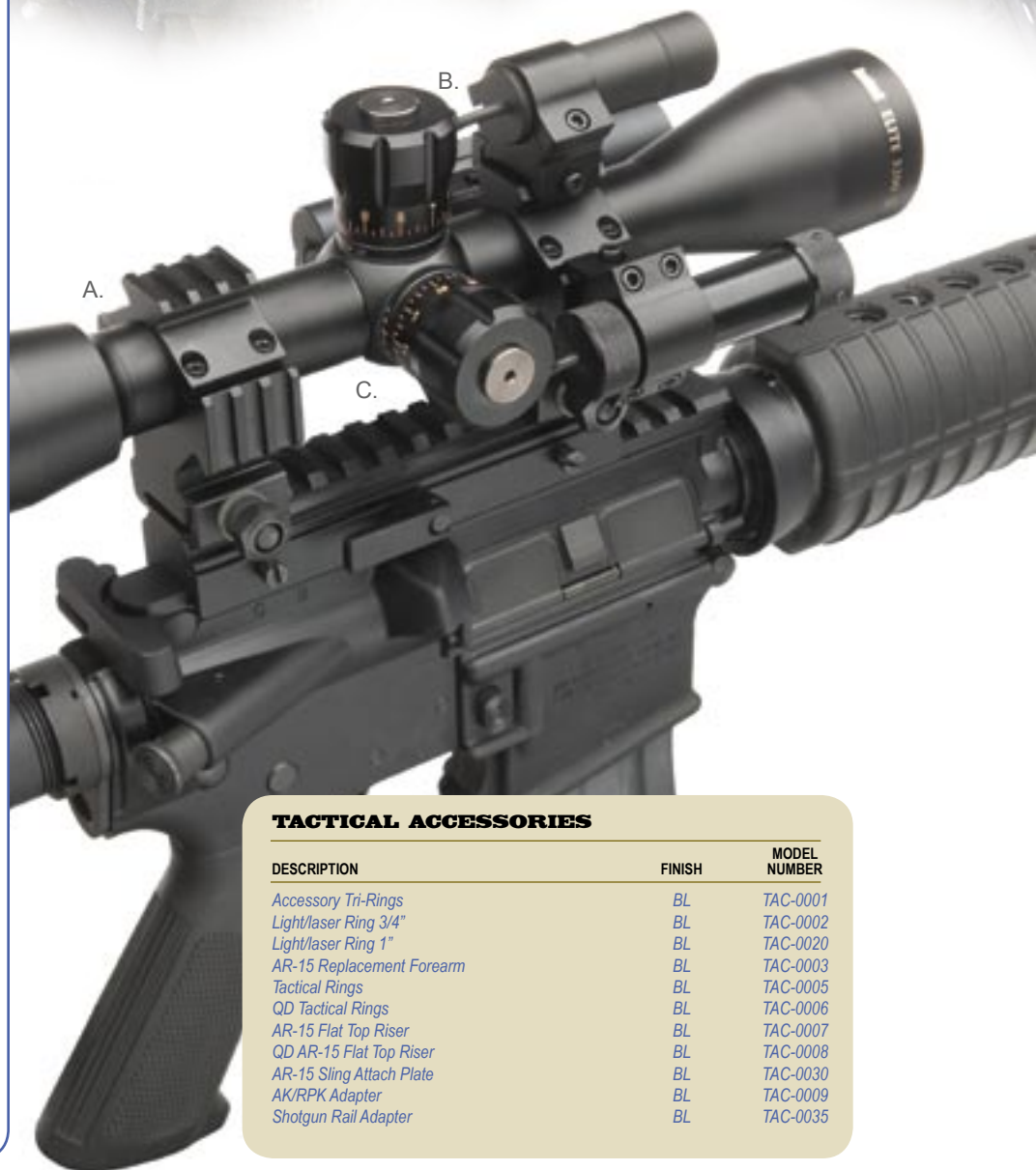
- Available for 3/4" or 1" tubes
- Convenient attachment for any laser or light source
- Firmly grip all standard dovetail and Picatinny rails



C.

### QD AR-15/16 FLAT TOP RISER

- Fits all Flat-Top AR-15s and similar
- Doubles as a quick-detach accessory mount on any forearm
- True Picatinny design
- Perfect for mounting EOTech and other optical devices
- Fits all standard dovetail and Picatinny rails



### TACTICAL ACCESSORIES

DESCRIPTION	FINISH	MODEL NUMBER
Accessory Tri-Rings	BL	TAC-0001
Light/Laser Ring 3/4"	BL	TAC-0002
Light/Laser Ring 1"	BL	TAC-0020
AR-15 Replacement Forearm	BL	TAC-0003
Tactical Rings	BL	TAC-0005
QD Tactical Rings	BL	TAC-0006
AR-15 Flat Top Riser	BL	TAC-0007
QD AR-15 Flat Top Riser	BL	TAC-0008
AR-15 Sling Attach Plate	BL	TAC-0030
AK/RPK Adapter	BL	TAC-0009
Shotgun Rail Adapter	BL	TAC-0035

## THE NEW STANDARD FOR TACTICAL PERFORMANCE

Introducing B-Square® Tactical—designed by law enforcement for serious use in the field. Rugged, lightweight diverse accessories that will take a beating are an absolute survival tool for law enforcement and the military. New B-Square® Tactical products were well-thought-out by members of elite tactical teams around the United States,

and promise superior dependability and performance on the job. Simple to use, and quick and easy to install, all B-Square® Tactical products are the perfect choice for any AR-15 or shotgun that withstands rigorous daily use and requires absolute functional reliability...Serious products for serious duty.



**MODERN MILITARY MOUNTS** (INCLUDES 1" RINGS)

DESCRIPTION	FINISH	MODEL NUMBER
Colt AR-15/16, M16 Carry Handle Mount	BL	18526
Colt AR-15/16, M16 Flat Top w/ integral rings	BL	15150
Colt AR 15/16, Flat Top to Weaver™ Adapter/Riser (no rings)	BL	15100

**COLT AR-15/16 REPLACEMENT FOREARM**

- Fits any AR-15 Government, Tactical, or Law Enforcement Flat Top Carbine
- Easy to install with no front sight removal or tools
- Unique retention system locks forearm in tight
- Quad Picatinny rail for accessories
- Fabricated from premium grade aircraft aluminum

**SHOTGUN RAIL ADAPTOR**

- Fits all standard 12 gauge shotgun barrels
- Easy Picatinny mount for maximum versatility
- Longer rail for more multiple accessory mounting
- Fits all standard dovetail and Picatinny accessories

**COLT AR-15/16 SEE-THRU CARRY HANDLE MOUNT**

- Attaches to the gun's handle with a large thumb screw knob
- Return to zero capabilities
- Standard dovetail base
- Black matte only

**COLT AR-15/16 FLAT TOP RISER**

- Fits all Flat-Top AR-15s and similar
- Doubles as a quick-detach accessory mount on any forearm
- True Picatinny design
- Perfect for mounting EOTech and other optical devices
- Fits all standard dovetail and Picatinny rails
- Also available as Quick-Detach (shown above)

**COLT AR-15/16 FLAT TOP MOUNT**

- Base complete with integral rings
- Attaches to gun's dovetail by large thumb screw knobs
- Return to zero capabilities
- Raises the scope over the Front Sight
- Standard dovetail base

# 10 MODERN MILITARY MOUNTS



## Heckler & Koch 91/93/94/MP5

- Snaps over the gun's receiver
- Locks with a single knob
- Strengthened sideplates and clamp knobs
- Standard dovetail base
- Includes 1" rings



## SKS

- Attaches to receiver by replacing cover retaining pin
- See-under mount allows use of gun's sights
- Standard dovetail base
- Includes 1" rings
- Folding stock requires alterations



### MODERN MILITARY MOUNTS (INCLUDES 1" RINGS)

DESCRIPTION	FINISH	MODEL NUMBER
AK-47 / MAK-90 Receiver Mount	BL	18600
FN-FAL / LAR / L1-A1 (replaces cover)	BL	18500
Heckler & Koch 91, 93, 94, MP5 / CETME (receiver mount)	BL	18513
SKS 56 (bolts over receiver cover)	BL	18569
Springfield SAR 8, SAR 48, SAR 4800	BL	18500
Springfield M-1A, M14 (receiver mount)	BL	18514
Springfield .30 M-1 Carbine Receiver mount	BL	18576

## AK-47/MAK-90

- Receiver mount for Chinese models
- Attaches using steel trigger bolt & hammerbolt (included)
- Standard dovetail base
- Includes 1" rings

# CLASSIC MILITARY MOUNTS



## SPRINGFIELD 1903

- Replaces the gun's magazine cut-off
- See-under mount allows use of gun's sights
- Quick on and off with no change in zero
- Windage and elevation adjustments
- Includes 1" rings

## MAUSER SCOUT MOUNTS

- Replaces rear sight leaf
- Elevation adjustment so any LER (pistol) scope can be used without a change in zero
- Standard dovetail base
- Includes 1" rings

## ENFIELD 1917/P14

- Attaches to tapped hole in gun's receiver
- Replaces rear sight
- Standard dovetail base
- Includes 1" rings

## CLASSIC MILITARY MOUNTS (INCLUDES 1" RINGS)

DESCRIPTION	FINISH	MODEL NUMBER
<b>Enfield 1917 / P14 (replaces rear sight)</b>	BL	18550
<b>Mauser "Scout Mounts" (Long Eye Relief)</b>		
96 Swedish (small ring)	BL	18559
98 German (large ring)	BL	18561
<b>Mosin-Nagant "Scout" Mounts (Long Eye Relief)</b>		
Polish 44, Russian 44, Chinese 53	BL	18522
<b>SMLE (ROYAL ORDNANCE) Mounts</b>		
SMLE MK 1 #4, #5 (rec mount)	BL	18564
SMLE MKIII #1 [.303 cal] (rec mount)	BL	18565
SMLE MK III 2A [.308 cal] (rec mount)	BL	18590
<b>Springfield Mounts</b>		
Springfield 1903, 1903 A 3 (rec mount)	BL	18477
Springfield M-1 Garand (rec mount)	BL	18554

## 12 SHOTGUN SCOPE MOUNTS

**High-Definition, Fully-Coated Lenses**  
Reduces glare and gathers light for extended shooting time

**MOA Windage and Elevation Adjustments**  
Makes sighting-in easy

**True Shotgun Scope**  
Features 6" eye relief

**Duplex Reticle**  
Provides quick, easy target acquisition

**No-mar Design**  
Will not scratch or mar shotguns

**Steel Retention Bolts**  
For maximum hold

### SHOTGUN SCOPE COMBOS

- Scope, rings and saddle mount pre-assembled
- 2.5 x 20 shotgun scope 1" tube
- Available for all popular shotguns
- Camo available for selected models
- Easy to install, no gunsmithing needed
- Black and Mossy Oak® Break-Up except 935 Mossberg

## ACCURACY & CONCEALMENT FOR YOUR SHOTGUN

Our new shotgun scope and mount combos feature the same rugged strength and practical design that you've come to expect from all B-Square® products. Designed for deer and turkey hunting, this sturdy combo features a 2.5 x 20 scope with high-definition, fully-coated lenses to provide a sharp image even in low light. Designed to withstand the recoil of a slug gun, the scope also features standard shotgun 6" eye relief and a duplex reticle.

As with all our shotgun saddle mounts, the 2005 B-Square® shotgun mount additions are carefully contoured to provide a nearly "factory" fit. These mounts consistently channel recoil back through the receiver and away from the mounting screws for optimum accuracy. The shotgun scope mounts require no gunsmithing and feature full length receiver rails for maximum eye relief adjustments—perfect for all your favorite shotgun optics.

**TO ORDER, CALL 1-800-433-2909 8:30 A.M. TO 4:30 P.M. CST OR ANYTIME AT: WWW.B-SQUARE.COM**



## SHOTGUN SADDLE MOUNTS

- Available for all popular shotguns
- Channels recoil away from mounting screws
- Full length receiver rail for maximum eye relief
- Easy to install

## SHOTGUN/SLUG GUN SCOPE/MOUNT COMBOS

Mounts are assembled with 2.5X20 shotgun scope

DESCRIPTION	FINISH	MODEL NUMBER
Benelli S/90 Montefitro 12 ga	BL	516300
Benelli Nova 12 ga	BL	516305
Benelli Super Black Eagle 12 ga	BL	516330
Browning A-5 12 ga	BL	516205
Browning BPS 12 ga	BL	516250
Browning Gold 12 ga	BL	516212
Charles Daly 12 ga	BL	516450
Mossberg 500 12 ga	BL	516500
Mossberg 500 20 ga	BL	516525
Mossberg 5500, 9200, 712 12 ga	BL	516550
Mossberg 835 12 ga	BL	516585
Mossberg 935 12 ga	BL	516935
Remington RH/LH 12 ga	BL	516805
Remington RH/LH 20 ga	BL	516822
Remington 870 SPS & SPS-T 12 ga	BL	516812
Stoeger 2000 12 ga	BL	516200
Winchester 1300 12 ga	BL	516900
Benelli Super Black Eagle 12 ga New Mossy Oak	MB	516330MB
Browning Gold 12 ga Mossy Oak	MB	516212MB
Mossberg 935 12 ga New Mossy oak	MB	516935MB
Remington RH/LH 12 ga Mossy Oak	MB	516805MB
Remington RH/LH 20 ga Mossy Oak	MB	516822MB
Remington 870 SPS & SPS-T 12 ga Mossy Oak	MB	516805MB
Winchester Super X2 12 ga Mossy Oak	MB	516212MB

## SHOTGUN SADDLE MOUNTS (INCLUDES 1" RINGS)

DESCRIPTION	FINISH	MODEL NUMBER
<b>Saddle Mounts</b>		
Baikal 153 series Semi-auto 12ga	BL	16600
Benelli Nova 12 ga	BL	16305
Benelli Super Black Eagle 12 ga	BL	16330
Benelli Super 90 12 ga/ Benelli Montefeltro 12ga	BL	16300
Beretta Xtrema 12 ga	BL	16391
Beretta A390 Series 12 ga	BL	16390
Beretta Urika 12 ga	BL	16392
Browning A-5 12 ga	BL	16205
Browning BPS 12 ga	BL	16250
Browning BPS 20 ga	BL	16252
Browning BPS 10 ga /12 ga mag - pre-1997	BL	16255
Browning Gold 10 ga	BL	16210
Browning Gold 12 ga	BL	16212
Browning Gold 20 ga	BL	16220
BSA Model AS 12 ga	BL	16270
Charles Daly Semi-auto & Pump 12 ga	BL	16450
Charles Daly Semi-auto & Pump 20 ga	BL	16460
Franchi Semi-auto 12 ga 612, 912	BL	16650
Ithaca 37, 87 12 ga	BL	16337
Maverick 88 12 ga	BL	16500
Maverick 60 12 ga	BL	16550
Maverick 91 12 ga	BL	16585
Mossberg 500 Sport and Bantam 20 ga	BL	16525
Mossberg 500 12 ga	BL	16500
Mossberg 712, 5500, 9200 12 ga	BL	16550
Mossberg 535/835 12 ga	BL	16585
Mossberg 935 12 ga	BL	16935
Remington 1100, 1187 (12, 16 & 20 ga w/ serial X/N)	BL	16800
Remington 870 (12 & 20 ga w/ serial X/N)	BL	16812
Remington 870 Express 3.5" mag	BL	16812
Remington 870 20 ga Express LT	BL	16820
Remington 1100 20 ga Semi-auto LT	BL	16825
Remington 870, 1100, 1187 12 ga LH	BL	16801
Remington SP-10 10 ga	BL	16810
Stoeger 2000 12 ga	BL	16200
Verona 12ga Semi-auto (SX405 style)	BL	16400
Winchester/USRAC 1200, 1300, 1400, 1500 12 ga	BL	16900
Winchester Super X2 31/2 Mag	BL	16212
<b>Universal Cantilever Mounts (includes 1" rings)</b>		
Universal Cantilever Mount - Ribs up to 3/8"	BL	16175
Universal Cantilever Mount - Ribs over 3/8"	BL	16176
<b>Bases for Pre-drilled Receivers</b>		
BSA Model SA	BL	16517
Marlin 512 (12 ga) side mount	BL	16512
Mossberg 500 (base only)	BL	46505
Winchester 1300 (base only)	BL	46504
<b>Camouflage Saddle Mounts (Rings included)</b>		
<b>Mossy Oak® Breakup™</b>		
Browning Gold 12 ga. & 3-1/2" 12 ga. mag	MB	16212MB
Winchester Super X2 3-1/2" 12 ga mag	MB	16212MB
Remington 1100/1187 SPS & SPS-T 12 ga.	MB	16800MB
Remington 870 SPS & SPS-T 12 ga. & Super Magnum	MB	16812MB
Remington SP-10	MB	16810MB
Remington RH/LH 20 ga	MB	16822MB
<b>New Mossy Oak® Breakup™</b>		
Benelli Super Black Eagle 12 ga	MB	16330MB
Mossberg 935 12 ga	MB	16935MB

## 14 AIRGUN MOUNTS & ACCESSORIES

11, 12 or 13mm  
Models Available

### Easy Adjustment

Comes with Interlock AA rings for full windage and elevation adjustments

### Steel Insert Recoil Key

Holds firm despite airgun recoil

### DOVETAIL TO PICATINNEY ADAPTOR

- Works with any factory issue dovetail rail
- Picatinney design for more diverse mounting options
- Cantilevers forward or backward for correct eye-relief
- Easy Installation

### 11MM TO WEAVER™ ADAPTOR RISER WITH ELEVATION

- Attaches to any 11mm dovetail
- Easy installation

### HIGH/ULTRA HIGH AIRGUN MOUNTS

- Rugged design
- Fits all 11mm and 12mm dovetails
- Available in Webley & Scott
- Includes additional recoil stop pin
- Fully adjustable for windage and elevation
- Utilizes heavy riser posts that connect a 5-inch base to a pair of integral adjustable rings
- Designed and tested to withstand recoil from the most powerful spring airguns
- Designed to accommodate all popular airgun scopes
- Black matte finish

### CUSTOM MOUNTING SYSTEMS FOR YOUR AIRGUN

B-Square® offers the most complete line of professional scope mounts for adult air rifles and pistols. B-Square® airgun scope mounts are available in a wide array of styles and ring diameters. All mounts are custom fit to the rifle or pistol.

Each have integral recoil stops matched to the firearm to offset the extreme reverse recoil of airguns. Airgun scope dovetails are not the same—each manufacturer uses a different size—NO ONE MOUNT WILL FIT ALL GUNS!

TO ORDER, CALL 1-800-433-2909 8:30 A.M. TO 4:30 P.M. CST OR ANYTIME AT: [WWW.B-SQUARE.COM](http://WWW.B-SQUARE.COM)



### PISTOL AIRGUN MOUNTS

- IZH 46 mount
- Barrel Clamp
- Provides a Weaver™-style base for mounting
- No drilling or tapping required
- Includes all tools and mounting hardware
- Black matte finish



### INTERLOCK™ AA MOUNTING SYSTEM

- Extra long base to accommodate longer target scopes
- Complete windage and elevation adjustments
- "Auto-pitch" angulation feature eliminates scope stress
- Black matte finish



#### BUBBLE LEVEL

- Attaches to any 11mm dovetail
- Ensures bore and reticle alignment at a glance
- White scribed line on housing for quick reference

#### RECOIL STOP BLOCK

- Attaches to any 11mm dovetail
- Eliminates ring slippage
- Dual nylon "self-seating" bumpers
- Easy installation

### PRECISION AIRGUN MOUNTS, RINGS & ACCESSORIES

DESCRIPTION	FINISH	MODEL NUMBER
<b>AA 11mm Adjustable Air Gun Bases</b>		
AA Air Gun MOUNT x 1" Ring	BL	17101
AA Air Gun MOUNT x 30mm	BL	17130
AA Ultra High Air Gun MOUNT x 1" rings	BL	17702
AA High Air Gun MOUNT x 1" rings	BL	17701
<b>11mm Adjustable Air Gun Rings</b>		
1" x 11mm Dovetail	BL	10101
30mm X 11mm dovetail	BL	10130
1" X 11mm Dovetail adjustable high rings	BL	10037
30 mm X 11 mm dovetail adjustable rings	BL	10137
<b>11mm Fixed Air Gun Rings</b>		
1" x 11mm Dovetail	BL	10039
1" x 11mm Dovetail	SS	10050
30mm x 11mm Dovetail (w/ Recoil Blade)	BL	10045
<b>12mm Adjustable Air Gun Rings</b>		
1" x 12mm AA adjustable rings	BL	10585
<b>13mm Adjustable Air Gun Mounts &amp; Rings</b>		
1" x 13mm Dovetail "MAXI-GRIP" Mount and rings	BL	17501
<b>Webley &amp; Scott/Kodiak "AA" Base with Integral Adjustable Rings</b>		
AA Mount x 1" Adjustable Rings	BL	17401
AA High Post Mount	BL	17420
<b>One-Piece Air Gun Bases</b>		
<b>Benjamin Sheridan</b>		
Blue Streak/Silver Streak (Weaver™ style base)	BL	17010
Baikal IZH-46	BL	17900
Walther 94 Lever Action	BL	17030
<b>Air Gun Adapters &amp; Risers</b>		
11mm Riser/Extension Base (2-piece base)	BL	17012
11mm to Weaver™ Adapter Riser with elevation	BL	17021
3/8" to Weaver™ Adapter (2-piece base)	BL	17025
Dovetail to Picatinney Adapter	BL	17015
<b>Air Gun Accessories</b>		
Universal Recoil Stop Block	BL	17005
11mm "Bubble" Bore Level	BL	T1005
Spring Compressor	BL	T1700
<b>Air Sport Rings w/Reversible Clamp (Fits 9.5mm - 13.5mm Rails)</b>		
1" Low	BL	25010
1" Med	BL	25015
1" High	BL	25020
30mm Low	BL	25030
30mm Med	BL	25032
30mm High	BL	25035
<b>Air Sport Mounts</b>		
Short base 1" ring	BL	27101
Long Base 1" ring	BL	27201

## SPORTING RIFLE & SPECIAL PURPOSE SCOPE MOUNTS

### B-Square® Sport Utility Rings

Available on some models

### Rugged

Tough, practical designs

### Easy Installation

No gunsmithing required



### RUGER MINI-14

- See-under mount allows use of gun's sights
- Installs by replacing the bolt stop cover plate
- Attaches by a single knob to the threaded cover plate
- Standard dovetail base
- 1" Sport Utility rings included

## LIGHTWEIGHT STRENGTH FOR ALL SPORTING RIFLES

B-Square® scope mounts for sporting rifles require no gunsmithing and install in minutes. The quick-detach mounts have return-to-zero capability and sport extra-long ring mount rails to achieve maximum eye relief adjustments. B-Square® Popular Hunting mounts include a pair of 1" Interlock™ rings and carry B-Square® lifetime warranty protection.

B-Square® is the exclusive manufacturer of Ruger to Weaver™ adapters. The adapters lock onto the firearm and provide an extra long Weaver™ style rail so you can mount any optic on your Ruger rifle.

TO ORDER, CALL 1-800-433-2909 8:30 A.M. TO 4:30 P.M. CST OR ANYTIME AT: [WWW.B-SQUARE.COM](http://WWW.B-SQUARE.COM)





### REMINGTON 700

- One-piece design
- Contoured & custom cut to fit gun's action
- Standard dovetail base



### RUGER 10/22

- One-piece design
- Contoured to fit receiver
- Extra long to accommodate longer target scopes
- Standard dovetail base
- Drilling and tapping required
- Competition accuracy base available for heavy or standard barrel

### SPORTING RIFLE MOUNTS (INCLUDES 1" RINGS)

DESCRIPTION	FINISH	MODEL NUMBER
<b>Popular Hunting Mounts</b>		
H & K 300, 630, 770, 940, SL6, SL7	BL	14300
Rossi 62 / 59	BL	14410
Rossi 92 PUMA	BL	14411
Ruger Mini-14 181 series and later	BL	14502
Ruger Mini-14 181 series and later	SS	14506
Savage 340, 840, 890, 322 Hornet	BL	14600
Stevens 322, 325, 342	BL	14600
Westernfield	BL	14600
Winchester 94 Selected models only	BL	14710
<b>Lever Action</b>		
Winchester 94 (.30-.30 only) - offset receiver	BL	14710
Marlin 336, 1894, 1895 (w/out rings)	BL	45536
Marlin 39 (w/out rings)	BL	45539
<b>Scout Mounts (Rings not included)</b>		
Remington 700 Centerfire	BL	15580
<b>Ruger to Weaver™ Adapters (Rings not included)</b>		
Ruger 96/44, M77/22, M77/44, M77/ ML Mini 14 & Mini 30 Ranch	BL	14507
Ruger 96/44, M77/22, M77/44, M77/ ML Mini 14 & Mini 30 Ranch	SS	14508



### RUGER TO WEAVER™ ADAPTORS

- Unique cam system locks base in place
- Adapts most Ruger rifles with integral receiver mounts
- Standard dovetail base

**Fully Coated, Fully Adjustable**

High-Definition Lenses featuring duplex reticle and adjustable diopter

**Cleanly contoured**

Precise fitting mount

**Micro-click dials**

For precise aiming

**3-9 x 40 AO**

**THE PERFECT COMBO FOR BLACK POWDER RIFLES**

Try our new black powder mount on for size with your favorite “extra season” gun. Built for most black powder rifles, this dependable mount promises perfect scope alignment. If you are looking for a scope, give one of our combos a shot! Superior design and serious quality standards make this “shorty” 3-9 x 40 AO scope an all around work-horse. It

features a duplex reticle and fully-coated, high-definition lens—perfect for low-light conditions. Shockproof and waterproof, this scope also features fingertip “micro-click” dials for consistent, easy fine-tuning and an adjustable parallax and diopter to ensure even the closest shots are clear and on target.



**UNIVERSAL BLACK POWDER MOUNTS**

- Fits all black powder rifles
- Precise fit
- Multi-slotted for maximum eye relief



**BLACK POWDER COMBOS**

- Combo includes base and scope
- Universal black powder base
- 3-9x40 Short Scope
- Adjustable objective with target turrets
- Fully coated high-definition lenses
- Shock-proof, water-proof
- Nitrogen-filled, fog-proof

<b>BLACK POWDER MOUNTS</b>		
DESCRIPTION	FINISH	MODEL NUMBER
<b>Black Powder Mounts</b>		
Universal Black Powder Mount	BL	14950
	SS	14955
<b>Black Powder Combos</b>	BL	514950

## CENTERFIRE & RIMFIRE PISTOL SCOPE MOUNTS

### BROWNING BUCKMARK

- Attaches by removing two screws and replacing rear sight base
- Standard dovetail base
- Multiple slots for eye relief
- Precise, firm fit
- Black matte only

### CENTERFIRE SEMI-AUTO PISTOL MOUNTS

DESCRIPTION	FINISH	MODEL NUMBER
<b>Centerfire Semi-Auto Pistol Mounts (Rings not included)</b>		
Colt .45 (1911 Gov't Frames & clones)	BL	42533
Heckler & Koch USP 9mm, .40, .45 cal (does not fit "Tactical" sights or Compact)	BL	42750

### RIMFIRE SEMI-AUTO PISTOL MOUNTS

DESCRIPTION	FINISH	MODEL NUMBER
<b>Rimfire Semi-Auto Pistol Mounts (Rings not included)</b>		
Browning Buckmark .22 Universal	BL	42214
Ruger MK 1, MK II predrilled / Slabside	BL	42873
Ruger MK 1, MK II predrilled / Slabside	SS	42874
Ruger MK 1, MK II Universal slide mount	BL	42877
Ruger MK 1, MK II Universal slide mount	SS	42878

## A SUPERIOR SYSTEM

B-Square® no gunsmithing semi-auto pistol mounts integrate with the pistol's original components to assure optimum performance with every trigger pull, and are superior to any grip-mounted system. Centerfire saddle mounts are see-thru design and provide minimum slide clearance for a sleek look. Rimfire mounts use existing screw holes for a rock solid foundation.



### **TAURUS TRACKER & SILHOUETTE**

- Fits .17 and .22 cal.
- 6" barrel and longer
- Vent rib mount
- Black matte or stainless finish



### **COLT .45 (1911 FRAMES)**

- Uses slide stop pin to attach
- See-under mount allows use of gun's sights
- Elevation adjustments
- Standard dovetail base
- Black matte only



### **RUGER MK I/II PRE-DRILLED**

- Pre-drilled receiver only
- Uses existing tapped screw holes
- Universal: fits all barrel lengths
- Standard dovetail base
- Black matte or stainless finish



### **RUGER SINGLE SIX**

- Uses existing front and rear sight screw holes
- No gunsmithing required
- Fits all 6 1/2" barrels
- Standard dovetail base
- Black matte or stainless finish



### **RUGER MK I/II UNIVERSAL**

- For non-drilled Ruger MK I and MK II only
- Slides onto receiver
- See-under mount allows use of gun's sights
- Return to zero capabilities
- Standard dovetail base
- Black matte or stainless finish

## REVOLVER SCOPE MOUNTS



### **SMITH & WESSON UNIVERSAL MOUNT**

- Uses rear sight recess for recoil stop and mount attachment
- Fits all K, L, N frames
- Fits all calibers and 5" barrel lengths and longer
- Available for both pre- and post-1993 revolvers
- Available in black matte or stainless finish



### **LOCKED-DOWN LOOKS**

B-Square® revolver mounts lock to the firearm using the ventilated rib or existing predrilled holes in the firearm. They require no gunsmithing. Rib mounts are full length for maximum eye relief adjustment. Every revolver mount is specifically designed to precisely follow the handgun's aesthetic lines.



### RUGER BLACKHAWK AND SUPER BLACKHAWK

- One mount fits both the Blackhawk and Super Blackhawk
- Works on all calibers with bbl length of 5" and longer
- Firm, precise fit
- Uses existing rear sight holes
- Available in black matte or stainless finish



### RUGER SUPER REDHAWK

- Uses existing Ruger integral frame mounting notches
- Compatible for use with any optic and all calibers including the .454 and the new .480
- Works on all calibers and barrel lengths
- Uses integral barrel mounts
- Ruger to Weaver™ adapter
- Available in black matte, stainless or target gray finish

### REVOLVER MOUNTS (RINGS NOT INCLUDED)

DESCRIPTION	FINISH	MODEL NUMBER
<b>Revolver Mounts</b>		
Colt Anaconda / Python / Taurus 689 6-8" non-ported with vent rib	BL SS	42529 42530
Dan Wesson Clamp-on 6"+ all models with ventilated rib	BL SS	42603 42604
Rossi 971 non vent rib model only 6" non-ported barrel	BL SS	42405 42406
Ruger GP 100 Rib Mount 6" non ported	BL SS	42973 42974
Ruger Blackhawk/Super Blackhawk	BL SS	42861 42862
Ruger Redhawk - All Calibers with bbl. length of 5 1/2" or longer. Uses existing rear sight holes.	BL SS	42863 42864
Ruger Redhawk/Super Blackhawk Hunter - All Caliber and Barrel lengths. Uses integral barrel mounts. Ruger to Weaver™ adapter.	BL SS	42985 42986
Ruger Super Redhawk	BL SS TT	42975 42976 42980
Ruger Single Six 6 1/2" non-ported barrel	BL SS	42968 42969
Smith & Wesson K,L,N Frames Pre 1993	BL SS	42401 42402
Smith & Wesson K,L,N Frames Post 1993 Uses existing pre-drilled tappings 5" or longer bbls.	BL SS	42405 42406
Taurus 44 Magnum, 607, 608 6" & 8" barrel with vent rib	BL SS	42305 42306
Taurus 689 6-9" non-ported barrel with vent rib	BL SS	42529 42530
Taurus Raging Bull 6 1/2" non-ported barrel	SS	42321
Taurus Raging Bull 8 3/8" non-ported barrel	BL SS	42322 42323
Taurus Tracker .17 & .22 cal. with vent rib Silhouette .17 & .22 cal.	BL SS	42300 42301
Taurus Model 94 5" + or longer barrels	BL SS	42315 42316



### Solid Lockdown

No-slip cams lock legs in any position along the length of the leg-tubing for complete, solid adjustment in any terrain. Locks are easily disengaged with a flip of the thumb.

### Solid Stance

No-slip rubber feet grip to any surface to prevent spreading, skidding or slipping of bipod legs.



### TACTICAL BIPODS

- Legs fold out and extend without the aid of springs for silent, one-push deployment
- Fully adjustable height from 7.5"-11"
- Hold rifle steady on any terrain
- Weighs only 8 ounces
- Black matte finish only
- Available for standard swivel stud attachment or as a standard or quick-detach model for Picatinney rails.

## SERIOUS VERSATILITY IN THE FIELD OR THE RANGE

Designed to meet the needs of the serious shooter and hunter, B-Square® Sportsman Series and Tactical bipods feature a one-of-a-kind, springless design offering swift and quiet deployment, rugged construction, and unsurpassed strength and stability. Designed to effectively function

while prone, kneeling, or sitting, B-Square® bipods swiftly and easily adjust to any height and lock into place with the simple push of a cam lock on each leg. Perfect for uneven terrain and as a solid foundation for the heaviest of firearms.





**SPORTSMAN BIPODS**

- Unique clamping plates conform to the contour of the gun securely with no marring
- Quiet single-fold hinge allows legs to silently, easily fold out or retract with one push
- Legs can be adjusted and locked in any position using unique cam design
- Rugged construction gives incomparable strength and stability, even at heights up to 40"
- Ideal for prone, kneeling and ALL sitting positions
- Black matte and stainless finish

**BIPOD SYSTEMS AND ACCESSORIES**

DESCRIPTION	FINISH	MODEL NUMBER
<b>Sportsman Series</b>		
Sportsman 9-15"	BL	6502
	SS	6503
Sportsman Deluxe 10-22"	BL	6502L
	SS	6503L
Sportsman Elite 20-40"	BL	6502XL
	SS	6503XL
<b>Tactical Bipod</b>		
Tactical Bipod (fits over sling swivel)	BL	6510
Tactical Elite Bipod (Picatinney rail attachment)	BL	TAC-6510
QD Tactical Elite Bipod (Quick-detach Picatinney rail attachment)	BL	TAC-6510QD



#### REMINGTON FOREND WRENCH

- Made to fit forend wrench pilots inside the tube
- Features a notched blade to fit into nut slots and comes complete with ball tee handle



#### RECOIL PAD JIG

- Installs recoil pads perfectly with no stock damage
- No sander alteration is required
- Use with any table, disc, or belt sander
- A guaranteed fit every time
- All shaping is done completely off the stock



#### FROZEN SCREW JACK

- Prevents damage to your fine firearms
- Precision made
- Will adjust to fit any condition including frozen top-lever screw, side-lock screws or other
- Complete with wrench and four blades



#### JEWELING FIXTURE

- Makes a series of full circular polished spots on a round surface such as a rifle bolt
- The Bolt-Dex fixture holds the bolt and rotates it to the indexed positions
- Jewelling brushes and abrasive jewelling compound available



### PRO GUNSMITH SCREWDRIVER SET

- 26 hardened steel bits: Phillips, Slotted, Hex, Torx, and Posi-Drive
- Three long bits for recoil pad and see-thru mount installation
- A full-featured screwdriver
- One 1/4" socket drive adapter
- All housed in a sturdy molded case with individual compartments for each item



### CROSS HAIR ALIGNMENT TOOL

- Will square up your scope or front sight in seconds
- Accurately sets scope vertical reticle position and determines front sight ramp vertical
- Eliminates removal of action and barrel from gunstock
- Fits into the receivers of most bolt action centerfire rifles
- Made of optically clear plastic that will not mar the gun's finish



### TRI-HEAD HAMMER

- The Tri-Head Hammer has three interchangeable heads: brass, steel and nylon
- A brass drift is stored in the handle



### 217 PIECE SCREW KIT

- A dozen each of 18 sizes of the most popular ring, base & plug screws
- Each size housed in individual compartments
- All screws have hex heads



### SLING SWIVEL INSTALLATION KIT

- Use with an 1/4" electric hand drill or in a drill press
- Includes a 5/32" drill bit, 7/32" safety counterbore drill bit and a #10 drill bit
- B-Square® bipods also attach easily to sling swivels



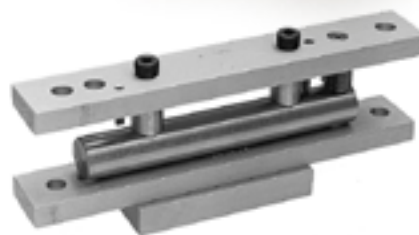
## SCOPE MOUNT WRENCH

- Prevent marring and burring of slot nuts and ensure maximum tightness
- The B-Square® Weaver™ wrench fits the large ring clamp nut on the side of the rings and over the end of the screw
- The Redfield model also fits Ruger rings



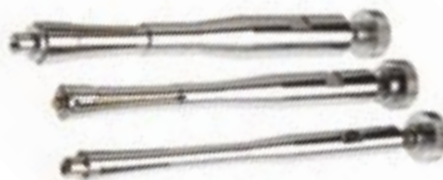
## STEEL STAMPING GUIDE & STAMPS

- Aligns and correctly spaces up to 20 - 1/16" or 13 - 3/32" characters
- A clamp is included for stamping barrels
- Sold individually and as a set
- Specify 1/16" or 3/32" spacers when ordering



## SCOPE MOUNT DRILL JIG

- Aligns holes with the bore using a precision ground arbor inserted into the receiver in place of the bolt
- No measuring required
- Includes #31 drill bit and 6x48 tap



## BARREL SPUDS

- Barrel Spuds adjust to fit most calibers
- Use with any bore sighter or alignment tool
- Various sizes: .177 airgun, .22 cal to .270 cal, 7mm to .35 cal.
- Set of all three or individual available



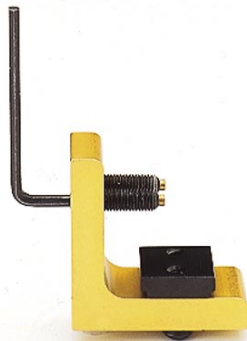
## UNIVERSAL OFFSET SPUD

- Provides higher mounting of the bore sighter when aligning scopes and sights on shotguns and military rifles



**FRONT SIGHT PUSHER**

- Adjusts dovetail sights without hammering or damage
- Two hardened posts opposite a pusher ram extend or retract by turning a screw



**REAR SIGHT PUSHER**

- Prevents marring the gun's finish by using the gun's slide grooves
- A brass-tipped jack screw pushes to adjust or remove the rear sight
- Extra clamp plates are also available: Colt .45, Glock



**SKS/AK SIGHT ELEVATION KIT**

**Sight Pusher:** Professional tool clamps to the front sight post

- Adjusts sight in either direction without repositioning

**Sight Elevation Tool:** T-Handle wrench fits over the gun's front sight post

- Screws in or out for elevation adjustment
- Also available separately

**GUNSMITHING/SPECIALTY TOOLS**

DESCRIPTION	MODEL NUMBER
<b>Specialty Tools</b>	
Brass Hammer - 10 oz. Triple Head	T0010
Brass Drifts	T0018
Pin Punch Set	T0020
Screw Pitch Gauge - American	T0034
Screwholder	T0038
Arbor Press	T0050
Steel Stamping Guide ( 1/16")	T0060-1
Steel Stamping Guide ( 3/32")	T0060-3
Rifle Bolt Extractor Rivet Set	T1475
<b>Steel Stamps Letter &amp; Figure Sets</b>	
1/16" letters & figures	T1065
3/32" letters & figures	T1067
<b>Steel Stamping Guide Kits including Steel Stamps Letter &amp; Figure Set</b>	
Tru Tapper	T0100
Sling Swivel Installation Kit	T0114
Jeweling Fixture	T0135
Jeweling Compound	T0136
Jeweling Brushes	T0137
Frozen Screw Jack	T0145
Recoil Pad Jig	T0150
Barrel Press	T1640
Floor Plate Release	T1806
Stockbolt Drill Jig Kit	T1870
<b>Scope &amp; Sight Tools</b>	
Airgun Spud - .177 cal.	T0405
Bore Sighter Spud - .22 - .270	T0406
Bore Sighter Spud - 7mm - .35	T0407
Cross Hair Alignment Tool	T1001
Bubble Level - 11mm Dovetail	T1005
Bubble Level - Weaver™ Dovetail	T1006
Scope Mount Wrench - Redfield	T1011
Scope Mount Wrenches - Weaver™	T1050
Universal Offset Spud	T1031
Front Sight Pusher	T1100
Rear Sight Pusher - Colt	T1250
Rear Sight Pusher - Glock	T1253
Remington Fore End Wrench	T1622
SKS / AK Front Sight Pusher	T1862
SKS / AK Sight Elevation Tool	T1863
SKS / AK Front Sight / Elevation Kit	T1864
Scope Mount Drill Jig with #31 Drill & 6-48 Tap	T1878
<b>Gunsmithing Tools and Supplies</b>	
Professional Gunsmith Screwdriver Set	T0045
<b>Precision Reloading Accessories</b>	
Barrel Vise	T1515
Barrel Vise Jaws	T1510
<b>Gunsmith Base Material ( 10" lengths BL)</b>	
.222 high, 1.29 diameter (Mauser front)	B4222
.396 high, 1.05 diameter (Mauser rear)	B4396
.368 high, 2.69 diameter (Winchester rear)	B4368
.370 high, flat (for Marlin and universal use)	B4370
.650 high, flat	B4650
<b>Trigger Guard / Action Screws</b>	
Remington 700 ADL / BDL (Pkg of 3)	STADL
Mauser 98/FN (No Lock) (Pkg of 2)	STM98
Ruger 77 TGA (Pkg of 3)	STR77
Winchester 70 (All) (Pkg of 3)	STW70
<b>Screw Kit</b>	
217 Piece Assorted Screw Kit	S1000



### BRASS DRIFTS

- Set of two knurled, solid brass punches
- Drive out gunsights and large pins without damage
- Diameters of 1/4" and 3/8" available



### TWIN POST ARBOR PRESS

- The Super MagArbor Press has been crafted by B-Square® for precision reloading
- No Spring twin posts
- All the load is between the posts
- Easily resizes all caliber brass
- Fully adjustable on threaded posts for secure positioning
- The ram, with replaceable brass caps and spring return, has over a 1" stroke
- The handle is adjustable and the press can be used right or left-handed



### SCREW HOLDER

- For shortening, chamfering or pointing
- Knurled retainer cap holds any #6 or #8 scope screw



### PIN PUNCH SET

- Ball bearing inside handle allows for maximum tightening.
- Set includes three punches: .039", .060", .091"
- Set includes three extra pins



### FLOOR PLATE RELEASE BUTTONS

- Modernize Classic Military Rifles
- Release buttons install in floor plates of Mousers, Springfield and Enfields 1914 & 1918



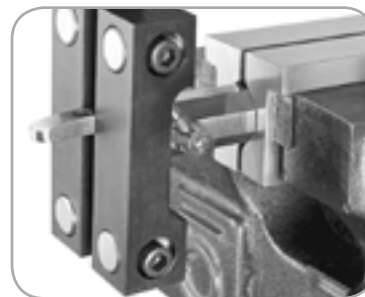
### BARREL VISE

- Holds barrels tightly for easy and safe removal
- Outperforms other vises regardless of size
- Can be held in a large bench vise or permanently mounted
- Small enough to swing in a lathe



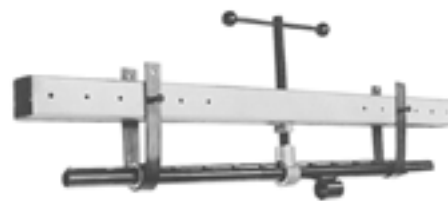
### SCREW PITCH GAUGE

- Available only in American measurement



### VISE JAWS

- Converts your bench vise to hold barrels safely with no damage
- Securely clamps both round and octagonal barrels
- Unscrew breech plugs, adjust sights or clean



### BARREL PRESS

- Straighten any shotgun or rifle barrel, even vent ribbed barrels
- Features a heavy steel beam with adjustable hangers to support the barrel under the screw press
- Special bushings protect the rib
- Completely adjustable and so light, it is portable
- Exerts nearly 10 tons of straightening force



# LYNX RINGS AND BASES

Refer to the Lynx price sheet for the full offering of diverse Lynx steel rings and bases.

## RINGSETS FOR STUD BASES (on gun below)

- Full windage adjustment in front and rear rings
- Proved rapid, accurate mounting with no lateral stress on the scope
- Available in Black Matte or Black Gloss finish
- 26mm Black Matte available by special order only

Special ringmount models available, but not shown:

- Rings and bases for the Smith & Wesson 500 in Stainless Finish
- BSA Fullbore QD Ringmounts



## STUD BASES FOR RIFLES

- Available for most popular rifles
- Available in one-piece, two-piece and two-piece extended models
- Two piece bases allow easier cartridge loading access
- One piece bases allow greater rigidity and a parallel platform on hand-worked actions
- Extended bases solve eye relief scope mounting problems caused by compact scopes on long actions
- Black Matte and Stainless finishes available



## QUICK CHANGE BASES FOR RIFLES AND REVOLVERS

- Superior return to zero mounting capabilities
- Accepts Tikka, CZ and Fox Ringmounts
- Scope and rings can be removed and replaced without tools or need for readjustment
- An integral recoil stop prevents movement under the most severe recoil

## CZ, FOX & TIKKA RINGMOUNTS

- Available for CZ527/550, ZKK 600 series, Fox and Tikka Centerfire actions
- Three different recoil stops are provided for the various actions
- Available only in Black Matte or Black Gloss depending upon the model



## .22 & AIRGUN RINGMOUNTS

- Streamlined precision design with hardened steel clamp
- Complete with fasteners to give you a choice of Hex or QD clamping
- Suitable for all types of 9.5-12mm dovetail grooved receivers
- Optional recoil stop provided and recommended for airguns
- Available in Black Matte or Black Gloss finish



## PROFESSIONAL WEAVER™-STYLE QUICK-DETACH RINGMOUNTS

- Fit all Standard dovetails
- Fully machined tough, steel offers greater rigidity with integral recoil stop
- QD-Quick Detach offers precise return to zero
- Available in Black Matte, Black Gloss or Stainless finish

## RUGER M77 & SUPER REDHAWK RINGMOUNTS

- Available only in 1" high Black Gloss and Stainless configuration
- Magnum clamping system



## VERSATILE, POINT-OF-PURCHASE RETAIL DISPLAYS

Our new point-of-purchase display racks were designed to provide the hardware needed for just about any scope mounting job without taking up a lot of valuable retail space. We've put together popular selections for the most common firearms of B-Square® aluminum and Lynx steel scope mounts into two, attractive, point-of-purchase displays (or customize your own selection). Displays are shipped completely assembled and have been designed to work on counter tops, slat walls or peg boards—right out of the box!

### POINT-OF-PURCHASE DISPLAYS

DESCRIPTION	MODEL NUMBER
<b>B-Square POP #1 - Rifle and Military Mount Display</b> Contains: 4 ea. 20052, 20054, 20055, 20056, 27052, 27054 6 ea. 15500, 15514, 15515, 15550 and 2 ea. 18569 and 18526	<b>B2POP1</b>
<b>B-Square POP #2 - Rifle and Shotgun Mount Display</b> Contains: 4 ea. 20052, 20054, 20055, 20056, 27052, 27054 6 ea. 15500, 15514, 15515, 15550 and 2 ea. 16800, 16812	<b>B2POP2</b>
<b>Lynx POP #1 - 1" x Standard Dovetail, .22 and Ruger Ring Display</b> Contains: 4 ea. 8096N, 8098N, 8102N, 8106N, 8108N, 8124N 2 ea. 5132U, 5134U, 4679N, 4683N	<b>LYNXPOP1</b>
<b>Lynx POP #2 - 1" x Standard Dovetail, .22 Ruger, &amp; Tikka Ring Display</b> Contains: 4 ea. 8096N, 8098N, 8106N, 8124N 2 ea. 8102N, 8108N, 5132U, 5134U, 4679N, 4683N, 4416N, 4418N	<b>LYNXPOP2</b>

©2005 Armor Holdings, Inc. BSQ 1005

# B-SQUARE

SCOPE MOUNTS ♦ SHOOTING ACCESSORIES ♦ TOOLS

8909 Forum Way • Fort Worth, Texas 76140