



MOUNTING SYSTEMS 2006



WEAVER

1" Ex-High Matte
For objective
diameters thru

WEAVER AN INDUSTRY MAINSTAY FOR OVER 75-YEARS

When you head out to the field or range, you expect your equipment to be at its best. A lot goes into taking a good, precise shot and you count on that confidence when game time comes. That's why you choose Weaver™. We put our 75 years of ex-

perience into everything we do. You take that confidence and trust with you every time you use one of our mounting systems. Whether it's the tried and true original Weaver cross-lock design, or the brand new Sure Grip Windage Adjustable rings, you

know you've got the best when you use our products. From field to range, father to son, the Weaver heritage has been passed on for generations. In 2006, let Weaver provide you with rock-solid, dependable mounting systems for all of your shooting needs.

TABLE OF CONTENTS

GRAND SLAM STEEL TOP MOUNT BASES	3	SEE THRU DETACHABLE RINGS	6
GRAND SLAM STEEL TOP MOUNT RINGS	3	DETACHABLE TOP MOUNT ALUMINUM BASES	6
GRAND SLAM TOP MOUNT WINDAGE ADJ. RINGS	3	DETACHABLE SIDE MOUNTS	7
GRAND SLAM MISC.	3	DETACHABLE EXTENSION TOP MOUNT RINGS	7
GRAND SLAM HEIGHT GUIDE	3	COMPLETE RIFLE MOUNT SYSTEM	7
GRAND SLAM DOVETAIL EXTENSION RINGS	4	TOP MOUNT HEIGHT GUIDE	7
GRAND SLAM STEEL DOVETAIL RINGS	4	.22 TIP-OFF MOUNTS	8
GRAND SLAM STEEL DOVETAIL BASES	4	AR-15 MOUNTS	8
GRAND SLAM HANDGUN SYSTEMS	4	.22 TIP-OFF ADAPTER MOUNTS	8
GRAND SLAM SYSTEM	4	CONVERTA-MOUNT SIDE BASES	9
GRAND SLAM RINGS	4	CONVERTA-MOUNT SHOTGUN BRACKETS	9
QUAD LOCK DETACHABLE RINGS	5	CONVERTA-MOUNT SHOTGUN SYSTEMS	9
QUAD LOCK SYSTEMS	5	PISTOL MOUNT BASES	9
SURE GRIP DETACHABLE RINGS	5	PISTOL MOUNT SYSTEMS	9
SURE GRIP WINDAGE ADJUSTABLE	5	POLAR CAPS	10
QUAD LOCK SEE-THRU MOUNTS	6	SIMMONS/REDFIELD CHARTS	10
DETACHABLE TOP MOUNT RINGS	6	MOUNT CHARTS	11-15

GRAND SLAM™ TOP MOUNT BASES & RINGS



GRAND SLAM™ TOP MOUNT WINDAGE ADJUSTABLE RINGS

Get the legendary strength of Weaver steel along with the versatility of a windage adjustable ring with this new offering.

49315	1" MED BLACK	49319	1" MATTE HIGH
49318	1" MED MATTE	49317	1" BLACK X-HIGH
49316	1" HIGH BLACK	49320	1" MATTE X-HIGH



GRAND SLAM™ STEEL TOP MOUNT BASES

Our precision-built steel bases are machined to tight tolerances for a custom fit. A square-cut notch mates to the sturdy cross bolt in every Weaver top mount Ring. Custom-hardened fastening screws included.

48223	S25	48231	S55	+ CUSTOM FIT + MAXIMUM STRENGTH STEEL CONSTRUCTION + PRECISION-BUILT + RECOIL-RESISTANT FOR CONSISTENT ZERO
48224	S35	48234	S61	
48225	S36	48241	S91	
48243	S40A	48247	S402	
48226	S45	48249	S430	
48227	S46	48275	S459	
48228	S47	48276	S460	
48244	S49A	48282	S466	
48230	S54			



GRAND SLAM HEIGHT GUIDE

RING SIZE	SADDLE HEIGHT	FITS OBJECTIVE LENS SIZE
1" LOW	0.150	UP TO 40MM
1" MEDIUM	0.270	THRU 42MM
1" HIGH	0.400	THRU 44MM
1" EXTRA HIGH	0.520	THRU 50MM
30MM MEDIUM	0.320	THRU 40MM
30MM HIGH	0.490	THRU 44MM
1" MED .22 RINGS	0.262	THRU 36MM
1" HIGH .22 RINGS	0.392	THRU 40MM
1" EXTRA HIGH .22 RINGS	0.512	THRU 42MM
1" MED, MOD. 77/22 & NO.1	0.453	
1" MED, MOD. 77	STEPPED	
1" HIGH, MOD. 77	STEPPED	



GRAND SLAM™ STEEL TOP MOUNT RINGS

Our Grand Slam Top Mount Rings utilize Torx® screws and steel construction for maximum strength and tightening torque. The square cross locking bolt fits securely with Weaver bases.

49302	1" MED BLACK
49303	1" MED MATTE
49304	1" HIGH BLACK
49305	1" HIGH MATTE
49306	1" X-HIGH BLACK
49307	1" X-HIGH MATTE
49308	30MM HIGH BLACK
49309	30MM HIGH MATTE

GRAND SLAM™ MISC.

Go with the reliable Grand Slam — solid steel and sturdy.

49250	TORX SCREW ASSORTMENT
-------	-----------------------

GRAND SLAM™ DOVETAIL MOUNT RINGS AND BASES



**GRAND SLAM™ DOVETAIL
EXTENSION RINGS**

Adjust the eye relief on your favorite scope. These solid, all-steel rings allow you to move your scope forward or back for optimum placement.

49222	1",STR,XTF,MED BLACK
49210	1",STR,XTF,HIGH BLACK
49224	1",XTR,XTF,MED BLACK



**GRAND SLAM™
STEEL DOVETAIL RINGS**

These rings feature the positive dovetail locking system and boast rear mount windage adjustments. They offer maximum strength in steel construction and top-notch recoil resistance for the ultimate hold on your scope.

49200	1" LOW BLACK
49201	1" LOW MATTE
49202	1" MED BLACK
49203	1" MED MATTE
49239	1" MED NKL
49204	1" HIGH BLACK
49205	1" HIGH MATTE
49238	1" HIGH NKL
49206	1" X-HIGH BLACK
49207	1" X-HIGH MATTE
49226	30MM MED BLACK
49227	30MM MED MATTE
49208	30MM HIGH BLACK
49209	30MM HIGH MATTE



GRAND SLAM™ SYSTEM

This proven mounting system gives you everything you need. Solid steel rings and bases lock scopes in place.

49274	BR-ABOLT 1PC BASE BLACK
49264	BR-ABOLT 2PC BASE BLACK
49265	BR-ABOLT 2PC BASE MATTE
49272	MARLIN 336 1PC BASE BLACK
49268	REM 7400 1PC BASE BLACK
49266	REM 700 1PC BASE BLACK
49260	REM 700 2PC BASE BLACK
49261	REM 700 2PC BASE MATTE
49270	SAV 110 2PC BASE BLACK
49262	WIN 70 2PC BASE BLACK
49263	WIN 70 2PC BASE MATTE

GRAND SLAM™ RINGS

Grand Slam Rings are constructed of solid steel which yields amazing strength and scope retention. Scope returns to zero upon reinstallation.

49216	1" .22 MED BLACK	49219	1" .22 X-HIGH MATTE
49217	1" .22 MED MATTE	49221	1" .22 X-HIGH NKL
49215	1" .22 MED NKL	49236	1" RUGER #1 77/22 MED BLACK
49212	1" .22 HIGH BLACK	49234	1" RUGER 77 MED BLACK
49213	1" .22 HIGH MATTE	49232	1" RUGER 77 HIGH BLACK
49214	1" .22 HIGH NKL	49233	1" RUGER 77 HIGH MATTE
49218	1" .22 X-HIGH BLACK	49231	1" RUGER 77 HIGH NKL



**GRAND SLAM™
STEEL DOVETAIL BASES**

Offered as a one or two-piece system, these all-steel bases provide recoil resistance and feature the dovetail locking system for an ultra-secure, positive lock-on rings.

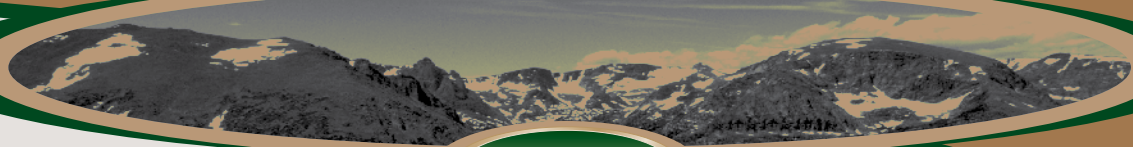
REFER TO
PAGE 10
FOR PART
NUMBERS

- + MAXIMUM STRENGTH STEEL CONSTRUCTION
- + RECOIL-RESISTANT FOR CONSISTENT ZERO
- + ONE OR TWO-PIECE OFFERINGS

GRAND SLAM™ HANDGUN SYSTEMS

Use these complete systems to outfit your TC Encore handgun. Comes with solid steel rings and bases that lock scopes into place.

48980	TC ENCORE BLACK (3 RINGS)
48981	TC ENCORE MATTE (3 RINGS)



WEAVER

QUAD LOCK AND SURE GRIP RINGS



NEW

QUAD LOCK DETACHABLE RINGS

Two straps and four screws provide added gripping power for these lightweight, all-aluminum rings. Thumbscrews allow for quick detach.

49074	1" MED, BLACK	49053	1" TIP-OFF MATTE
49046	1" MED, MATTE	49054	1" TIP-OFF SILVER
49052	1" HIGH, BLACK	49055	1" MED SILVER
49047	1" HIGH, MATTE	49056	1" HIGH SILVER
49062	1" HIGH, EXT. BLACK	49057	1" HIGH SILVER
49048	1" HIGH, EXT. MATTE		EXTENSION RINGS



SURE GRIP DETACHABLE RINGS

These rings use a four-screw system, and have steel caps and an aluminum saddle for added strength. Also features the Quick Detach system, allowing you to loosen the thumb screws and go to iron sights in seconds.

49160	1" MED, BLACK	49164	1" HIGH, MATTE
49163	1" MED, MATTE	49162	1" X-HIGH, BLACK
49161	1" HIGH, BLACK	49165	1" X-HIGH, MATTE



NEW

**SURE GRIP WINDAGE
ADJUSTABLE**

The four-screw system and steel cap offer shot-of-a-lifetime dependability. New windage adjustable models ensure that zeroing in your scope to critical accuracy is certain.

49140	1" MED BLACK	49144	1" HIGH MATTE
49143	1" MED MATTE	49142	1" X-HIGH BLACK
49141	1" HIGH BLACK	49145	1" X-HIGH, MATTE



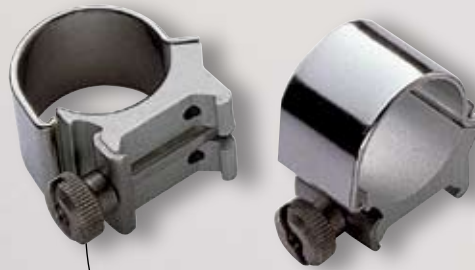
QUAD LOCK SYSTEMS

These systems feature four straps for added gripping strength. Rings mount to all Weaver top mount bases.

49098	MARLIN 336
49099	REM 700

Weaver History

Weaver has come a long way since Bill Weaver introduced his groundbreaking Weaver 350 scope and "grasshopper" mount in 1950. Over the years one thing has remained true—when you're looking for the most sturdy and reliable mounting system for your sporting optics, you turn to Weaver Mounting Systems.



DETACHABLE TOP MOUNT RINGS

Get the best of both worlds with a steel strap for added strength and an aluminum saddle for reduced weight.

49040	1",LOW,MATTE	49044	1",X-HIGH,MATTE
49034	1",LOW,SS	49036	1",X-HIGH,SS
49071	1",MED,BLACK	49122	30MM,LOW,BLACK
49041	1",MED,MATTE	49121	30MM,LOW,MATTE
49032	1",MED,SS	49131	30MM,LOW,SS
49050	1",HIGH,BLACK	49110	30MM,HIGH,BLACK
49042	1",HIGH,MATTE	49120	30MM,HIGH,MATTE
49033	1",HIGH,SS	49130	30MM,HIGH,SS
49080	1",X-HIGH,BLACK		



SEE-THRU DETACHABLE RINGS

Utilize iron sights or your scope for quick target acquisition with these convenient rings. The square cross lock bolt fits tightly and securely with any Weaver Top Mount Ring.

49513	1" BLACK
49523	1" MATTE
49522	1" SS
49512	1" EXT,BLACK
49510	1" EXT,MATTE
49524	1" DUAL EXT,BLACK
49525	1" DUAL EXT,MATTE

SEE-THRU MOUNTS

No bases required for these rings.

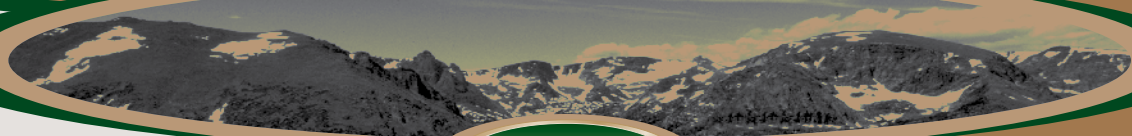
49719	1" BRNG ABOLT BLACK
49720	1" BAR/LEVER BLACK
49721	1" FN SERIES BLACK
49727	1" KNIGHT MK-85 BLACK
49713	1" MARLIN 336 BLACK
49714	1" REM 7400/7600 BLACK
49712	1" REM 700 BLACK
49715	1" REM 742/760 BLACK
49711	1" RGR 10/22 BLACK
49734	1" RGR 10/22,SS
49724	1" RGR 77 BLACK
49732	1" RGR 77,SS
49723	1" 77/22 MINI 14 BLACK
49735	1" RGR 77/22, MINI 14,SS
49717	1" SAVAGE 110 BLACK
49736	1" TC THUNDERHAWK BLACK
49718	1" WIN 70 BLACK
49725	1" WIN 88,100 BLACK
49716	1" WIN 94 A/E



TOP MOUNT ALUMINUM BASES

Each Weaver base is machined to tight tolerances for a custom fit. These aluminum bases detach quickly and easily and offer maximum strength for rings to hold tight.

REFER TO PAGE 10 FOR PART NUMBERS



WEAVER

DETACHABLE TOP MOUNT RINGS AND BASES



**DETACHABLE EXTENSION
TOP MOUNT RINGS**

Try these to get the ideal eye relief. They let you position your scope forward or backward.

49090 1",MED,EXT,BLACK	49061 1",DUAL,EXT,BLACK
49091 1",MED,EXT,MATTE	49045 1" DUAL,EXT,MATTE
49092 1",MED,EXT,SILVER	49038 1" DUAL,EXT,SS
49060 1",EXT,HIGH,BLACK	49155 30MM,LOW,EXT,BLACK
49043 1",EXT,HIGH,MATTE	49150 30MM,LOW,EXT,MATTE
49035 1",EXT,HIGH,SS	49156 30MM,HIGH,EXT,BLACK
48448 1",EXT,X-HIGH,BLACK	49152 30MM,HIGH,EXT,MATTE
48449 1",EXT,X-HIGH,MATTE	

TOP MOUNT HEIGHT GUIDE

RING SIZE	SADDLE HEIGHT	FITS OBJECTIVE LENS SIZE
1" LOW	0.089	THRU 38MM
1" MEDIUM	0.169	THRU 40MM
1" HIGH	0.332	THRU 42MM
1" EXTRA HIGH	0.560	THRU 50MM
1" SEE-THRU	0.750	THRU 50MM
30MM LOW	0.288	THRU 33MM
30MM HIGH	0.500	THRU 44MM
1" TIP-OFF	0.25	THRU 36MM
1" TIP-OFF SEE-THRU	0.750	THRU 45MM

DETACHABLE SIDE MOUNTS

They detach and reattach in seconds, just like our detachable top mounts. Side Mounts are available in both regular and "high profile" offerings to make any gun ready to accept optics.

48401	1
48402	2
48403	3A
48412	3B
48413	3C
48415	3D
48405	5
48407	7
48408	8
48416	10M
48409	M
49340	1",LONG HIGH BRACKET & RINGS
49350	1",HIGH BRACKET & RINGS



COMPLETE RIFLE MOUNT SYSTEM

Weaver covers every angle. These systems provide everything you need for the best mounting solution available for these specific models.

48763	MARLIN 336	48736	REM 700
48793	REM 4,6,7400,7600	48794	WIN 94

Weaver History

"Weaver-style" rings and bases have been imitated time and again by a variety of competitors—still, Weaver remains The One and Only. We've been at it now for 75 years and look forward to continuing to offer the best to hunters and shooters everywhere.

TIP OFF RINGS AND BASES



.22 TIP-OFF MOUNTS

These mounts are made for .22s that have factory grooves in the rifle's receiver. They clamp directly to the receiver.

4 CAP SCREWS
3/8" GROOVED RECEIVERS

49819 SURE GRIP, 1", BLACK
49821 SURE GRIP, 1", SS
49515 SEE-THRU, 1", BLACK
49733 SEE-THRU, 1", SS

3/8" GROOVED RECEIVERS

49440 1" .22, BLACK
49039 1" .22 SS
49514 SEE-THRU, 1", BLACK
49517 SEE-THRU, 1", SS



.22 TIP-OFF ADAPTOR BASES

Allows .22 Tip-Off Mounts to be used on non-factory dovetailed rifles. Provide sure, tight fit for the ultimate in reliability.

48203 TO-1
48201 TO-9
48009 TO-9S

48505 TO-9M
48202 TO-10
48511 TO-11

3/8" GROOVED RECEIVERS



NEW

AR-15 MOUNTS

This sturdy, versatile mount easily attaches to various AR-15 style weapons. Picatinny style rails accept Weaver Top Mount Rings to secure your optics. Utilize the Tri Rail design to mount a variety of accessories including tactical lasers or flashlights.

48320 SINGLE RAIL MOUNT SYSTEM - CARRY HANDLE MOUNT
48321 SINGLE RAIL MOUNT SYSTEM - FLAT TOP MOUNT
48322 TRI RAIL MOUNT SYSTEM - CARRY HANDLE MOUNT
48323 TRI RAIL MOUNT SYSTEM - FLAT TOP MOUNT

WEAVER

SHOTGUN AND PISTOL MOUNTING SYSTEMS



CONVERTA-MOUNT™ SIDE BASES

For use with our Converta-Mount low profile or see-under brackets and Weaver top mount rings. Makes scope mounting on several different shotguns a breeze.

- 48302 REMINGTON 870, 1100
- 48303 MOSSBERG 500, 835
- 48307 WINCHESTER 1200



CONVERTA-MOUNT™ SHOTGUN BRACKETS

These brackets give you a choice of scope mounting position and fit any Converta-Mount side base. Available in low-profile or see-under style.

- 48310 SEE-UNDER WINCHESTER, MOSSBERG
- 48311 SEE-UNDER REMINGTON 870
- 48301 REMINGTON 870, 1100

CONVERTA-MOUNT™ SHOTGUN SYSTEM

They let you transform your bird gun into a deer-hunting firearm along with the change in seasons. Two thumb screws put your scope on or take it off. Our see-under systems let you use your scope or bead.

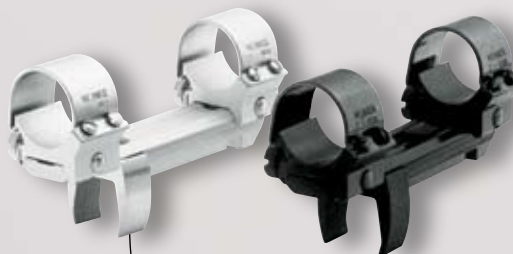
- 48870 REMINGTON 870, 1100, 1187-MED RINGS
- 48881 SEE-UNDER, 870, 1100-LOW RINGS
- 48884 SEE-UNDER, MOSSBERG 500/835-LOW RINGS
- 48883 SEE-UNDER, WINCHESTER-LOW RINGS



PISTOL MOUNT BASES

Available without rings, these bases allow you to purchase the specific rings you want to suit your application. Rugged steel yoke design allows for easy installation.

- | | |
|------------------------------|----------------------------|
| 48638 301 RUGER BLACKHAWK | 48641 306 RUGER 22 |
| 48635 301S RUGER BLACKHAWK | 48637 306S RUGER 22 |
| 48644 302 MINI 14 | 48642 307 S&W |
| 48646 302S MINI 14 | 48634 307S S&W |
| 48639 304 COLT PYTHON | 48648 308S RUGER REDHAWK |
| 48640 305 RUGER SECURITY SIX | 48643 314 RUGER SINGLE SIX |

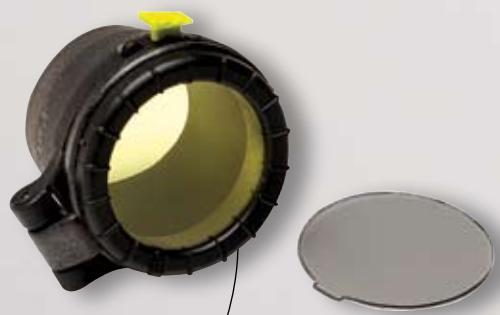


PISTOL MOUNT SYSTEM

An all steel yoke tightens on the frame for recoil-proof performance. This system, with quick detachable medium rings included, offers versatility for scope changes and makes your pistol a more accurate tool for hunting and shooting.

- | | |
|------------|------------|
| 48601 301 | 48606 306 |
| 48610 301S | 48620 306S |
| 48602 302 | 48609 307 |
| 48607 302S | 48608 307S |
| 48604 304 | 48611 308S |
| 48605 305 | 48622 314 |

W/MED RINGS {S INDICATES SILVER}



POLAR CAPS

Protect your glass with polar caps. Conveniently keep your lens free from scratches. Lens covers stay put during stalks and pop-up quick for easy target acquisition.

CAPS PART #	CLEAR LENS PART #		CAPS PART #	CLEAR LENS PART #		CAPS PART #	CLEAR LENS PART #	
71001	71003	A 1.00-1.09	71501	71503	G 1.50-1.55	71961	71963	P 1.96-2.043
71091	71093	B 1.095-1.10	71551	71553	H 1.558-1.66	72101	72103	R 2.10-2.22
71221	71223	C 1.22-1.29	71611	71613	J 1.612-1.66	72221	72223	S 2.225-2.36
71301	71303	D 1.30-1.341	71671	71673	K 1.675-1.735	72411	72413	T 2.41-2.515
71381	71383	E 1.387-1.429	71761	71763	M 1.760-1.820	72571	71573	U 2.575-2.725
71431	71433	F 1.432-1.485	71841	71843	N 1.840-1.919			

REDFIELD RING HEIGHTS

RING SIZE	RING HEIGHT
1" Low	0.15
1" MEDIUM	0.27
1" HIGH	0.4
1" EXTRA HIGH	0.52
30MM MEDIUM	0.32
30MM HIGH	0.49

SIMMONS CHART

49166	1" SILVER/MEDIUM
49167	1" BLACK GLOSS/MEDIUM
49168	1" MATTE BLACK/MEDIUM
49169	1" MATTE BLACK/22 MEDIUM
49170	1" SILVER/22 MEDIUM
49171	1" BLACK GLOSS/HIGH
49172	1" MATTE BLACK/HIGH
49173	1" SILVER/HIGH
49174	30MM/MATTE BLACK/MEDIUM
49175	30MM/MATTE BLACK/HIGH
49176	1" MATTE BLACK/SEE-THRU

GRANDSLAM STEEL™ DOVETAIL BASES: FROM PAGE 4

48964	2PC ANSCHUTZ BLACK	48950	1PC MAUSER SM 95 BLACK	48903	2PC SAV 110 LA/SA MATTE
48904	2PC BR-A-BOLT LA/SA BLACK	48916	1PC MAUSER 98 BLACK	48972	2PC SAV 110 LA/SA NKL
48905	2PC BR-A-BOLT LA/SA MATTE	48910	2PC MAUSER 98 BLACK	48906	2PC SAV 110 LA/SA ACU-TRIGGER MATTE
48922	1PC BR-A-BOLT LA	48900	2PC REM 700 LA/SA & HOWA/VANGUARD	48918	1PC SAV 110 LA BLACK
48923	1PC BR-ABOLT LA MATTE	48901	2PC REM 700 LA/SA & HOWA/VANGUARD MATTE	48920	1PC SAV 110 SA BLACK
48924	1PC BR-A-BOLT SA	48971	2PC REM 700 LA/SA & HOWA/VANGUARD NKL	48966	1PC SPRINGFIELD BLACK
48925	1PC BR-ABOLT SA MATTE	48912	1PC REM 700 LA & HOWA/VANGUARD	48968	1PC SPRINGFIELD 03A BLACK
48932	1PC BR-MARK II BLACK	48913	1PC REM 700 LA & HOWA/VANGUARD MATTE	48926	1PC TC ENCORE
48933	1PC BR-MARK II MATTE	48930	1PC REM 700 SA BLACK	48976	2PC WEATHERBY MARK V BLACK
48911	2PC BR WSSM MATTE	48931	1PC REM 700 SA MATTE	48908	2PC WIN 70 (.860 SPACING) BLACK
48960	2PC COLT SAUER BLACK	48948	1PC REM 760	48909	2PC WIN 70 (.860 SPACING) MATTE
48970	2PC CVA BLACK	48978	1PC REM 788 LA BLACK	48934	2PC WIN 70(.435 SPACE & PRE-64) BLACK
48974	1PC HUSQVARNA BLACK	48946	1PC REM 788 XLA BLACK	48935	2PC WIN 70(.435 SPACE & PRE-64) MATTE
48928	1PC MARLIN 336	48914	1PC REM 7400, 4&6	48907	2PC WIN 70 WSSM MATTE
48929	1PC MARLIN 336 MATTE	48915	1PC REM 7400, 4&6 MATTE	48940	1PC WIN 70SA-1984 BLACK
48954	1PC MAUSER FN BLACK	48962	2PC SAKO BLACK	48936	1PC WIN 70(PRE-64) BLACK
48952	2PC MAUSER FN BLACK	48956	1PC SAV 99 BLACK	48938	1PC WIN 70(.860 SPACE) BLACK
48958	1PC MARLIN 1894 BLACK	48902	2PC SAV 110 LA/SA BLACK	48942	1PC WIN 88, 100 BLACK
				48944	1PC WIN 94-AE BLACK

TOP MOUNT ALUMINUM BASES: FROM PAGE 6

48011	11	48027	27	48042	42	48055	55	48071	71	48073	89	48430	402S	48426	414M
48012	12	48028	28	48043	43	48057	57	48010	71A	48090	90	48107	403	48427	414S
48013	13	48029	29	48044	44	48058	58	48072	72	48091	91	48106	404	48431	415
48014	14	48030	30	48045	45	48059	59	48074	74	48092	92A	48105	405	48432	415M
48015	15	48031	31	48510	45S	48064	60A	48075	75	48007	92AS	48110	406	48433	415S
48016	16	48032	32	48046	46	48061	61	48076	76	48093	93	48111	406	48434	416M
48017	17	48035	35	48004	65	48060	61A	48079	79	48094	94	48000	407S	48440	417M
48018	18	48006	35S	48502	46M	48002	61S	48080	80	48095	95	48112	408	48435	418M
48019	19	48500	35M	48047	47	48504	61M	48081	81	48096	96	48513	410	48453	418S
48020	20A	48036	36	48003	47S	48062	62	48082	82	48097	97	48452	410S	48437	419M
48021	21	48005	36S	48503	47M	48069	63B	48083	83	48098	98	48632	411	48438	420M
48022	22	48501	36M	48048	48	48447	63BS	48084	84	48099	99	48633	411S	48439	420S
48023	23	48039	39	48049	49A	48065	65	48085	85	48109	401	48512	412S	48444	421M
48024	24	48040	40A	48050	50	48067	67	48086	86	48001	401S	48425	413	48443	423M
48025	25	48428	40AM	48053	53	48068	68	48087	87	48108	402	48441	413S	48446	424
48026	26	48041	40AS	48054	54	48070	70	48088	88	48429	402M	48442	413M	48445	424M
														48450	427
														48451	428

MOUNT CHARTS

FIREARM MOUNT APPLICATIONS <small>MAKE: MODEL OF FIREARM COLOR INDICATES FINISH: GLOSS BLACK MATTE BLACK SILVER</small>	NOTES	TOP MOUNT BASES					SEE THRU MOUNT COMPLETE SYSTEMS	SIDE MOUNT BASE <small>USE ONLY WITH 49350 OR 49340 RING BRACKET</small>	GRAND SLAM™ TOP MOUNT BASES-MATTE BLACK				GRAND SLAM™ DOVETAIL BASES	
		STANDARD		EXTENSIONS		1-PC			STANDARD		EXTENSIONS		1-PIECE BASE	2-PIECE BASES
		REAR	FRONT	REAR	FRONT				REAR	FRONT	REAR	FRONT		
ANSCHUTZ														
> MARK 12		16	16											
> 54 54MS 64 64MS 164 1400 SERIES 1500 SERIES		91	91					591	591				48964	
> 153 DELUXE		19	19											
> 156B		61	46			402	49717	1						
MATTE		61M	46M			402M			561	546		S402		
SILVER		61S	46S			402S	49729							
AUTO SHOTGUNS														
> ALL AUTOS EXCEPT REM 11-48 11-87 1100 SPTSMN 48	4							7						
BENELLI														
> NOVA SHOTGUN				423M										
> SUPER BLACK EAGLE				93										
BERETTA														
> MATO RIFLE		49A	46											
> PINTAIL SLUG GUN		35	35		40A	40A								
MATTE		35M	35M		40A-M	40A-M			535	535	540A	540A		
SILVER		35S	35S		40A-S	40A-S								
> BRITISH 303														
> WITH ENFIELD ACTION	4 15			TD-1										
BROWNING														
> 1885 HIGH WALL (OCTAGON BARREL)	1 3	11	29											
> 22 AUTO	18			60A										
> SAKO ACTIONS IN 243 308 22-250 222 & 222 MAG.		72	71											
> A-BOLT A-BOLT 22 STALKER; MEDALLION		47	47				49719						48922 L/A 48904	
BLACK													48924 S/A 48904	
MATTE		47M	47M						547	547			48923 L/A 48905	
MATTE													48925 S/A 48905	
SILVER		47S	47S											
> A-BOLT SHOTGUN														
MATTE		47M	419M											
> BOLT ACTION BBR HI-POWER OTHER CAL. (OLDER MOD.)		45	46		402	49721	5	545	546		S402			
SILVER		45S	46S		402S									
> BAR BAR II MARK II BLR LIGHTNING (LEVER) BPR	5	54	54			49720							48932	
MATTE									554	554			48933	
> BLR (LEVER ACTION)		25	25						525	525				
> BLR WITH FLAT TOP RECEIVER (OLDER MODELS)		28	28											
> BBR (BOLT ACTION) LONG & SHORT ACTIONS		47	46		402	49718								
MATTE		47M	46M		402M				547	546		S402		
SILVER		47S	46S		402S									
> A-BOLT WSSM		427	47										48911 (MATTE)	
COLT														
> 57		45	46		402	49721		545	546		S402			
SILVER		45S	46S		402S									
> PYTHON KING COBRA & TROOPER MKIII MKV (NOT DRILLED/TAPPED)	8			48639										
> ANACONDA PYTHON & KING COBRA PISTOLS	8 17			412S										
SAUER					40A	40A							48960	
MATTE		35M	35M		40A-M	40A-M			535	535	540A	540A		
SILVER		35S	35S		40A-S	40A-S								
CVA														
> OCTAGON BARRELS / RECEIVERS	17	61A	61A											
> ROUND BARRELS / RECEIVERS (POST '96 MODELS)		418M	418M										48970(GLOSS)	
SILVER		418S	418S											
ENFIELD WITH RECEIVER CUT DOWN LIKE:														
> WINCHESTER 70		47	46		402	49718								
MATTE		47M	46M		402M				547	546		S402		
SILVER		47S	46S		402S									
> REMINGTON 721		36	35		40A	49712								
MATTE		36M	35M		40A-M				536	535		S40-A		
SILVER		36S	35S		40A-S									
GROOVED RECEIVER WITH 3/8" DOVETAILS														
> SEE .22 RING INFORMATION	12					49515								
SILVER						49733								
INTERARMS (ROSSI - STOEGER)														
> HOWA		36	35		40A	49712							48912 48900	
MATTE		36M	35M		40A-M				536	535		S40A	48913 48901	
SILVER		36S	35S		40A-S									
> MARK X	1	55	20A											
> MINI MARK X	1	23	71A											
ITHACA														
> DEERSLAYER 37 & 87 (12 16 20 GA.)				62		49715								
> LSA-55 & LSA-65		61	61			49727								
MATTE		61M	61M						561	561				

MOUNT CHARTS

FIREARM MOUNT APPLICATIONS <small>MAKE: MODEL OF FIREARM COLOR INDICATES FINISH: GLOSS BLACK MATTE BLACK SILVER</small>	NOTES	TOP MOUNT BASES					SEE THRU MOUNT	SIDE MOUNT BASE	GRAND SLAM™ TOP MOUNT BASES-MATTE BLACK				GRAND SLAM™ DOVETAIL BASES	
		STANDARD			EXTENSIONS		COMPLETE SYSTEMS	USE ONLY WITH 49350 OR 49340 RING BRACKET	STANDARD		EXTENSIONS		1-PIECE BASE	2-PIECE BASES
		REAR	FRONT	1-PC	REAR	FRONT			REAR	FRONT	REAR	FRONT		
SILVER		61S	61S											
JAPANESE														
> 6.5MM & 7.7MM	6			70				1						
KNIGHT MUZZLELOADERS														
> SEE MODERN MUZZLELOADING	7													
LEE-ENFIELD	4 15			TD-1										
MARLIN														
> 45 30AS 336 (ALL MODELS) 444 1893 1894 1895 CAMP 9 922M 989 .22 AUTO				63B		49713							48928	
SILVER				63BS										
MATTE									S466	S466			48929	
> 39A 39D & CENTURY (OCTAGON BARREL)		28	31											
> 39A (ROUND BARREL)	21	29	16	90				2						
> 80 81 & 980		12	12					2						
> 455		45	46			402	49721	5	S45	S46		S402		
SILVER		45S	46S		402S									
> 512 SLUG MASTER & 55 (DRILL & TAP)								10M						
> 60 990L 70 995 882 25MN 883	12													
> MLS-50 & MLS-54 (BASES SOLD 2/PACK)		406	406				49736							
SILVER		406S	406S											
> 1894													48958	
> 900 SERIES IN .17 & .22 CALIBERS	12													
MAUSER INCLUDING FN HVA & SWEDISH														
> RECEIVER RING ABOUT 1.410" DIAMETER (9BFN)	1 2	45	46			402	49721	5	S45	S46		S402	48954	48952
SILVER		45S	46S			402S								
> RECEIVER RING ABOUT 1.300" DIAMETER (SWEDISH 96)	1 2	55	46			402		1	S55	S46		S402	48950	
> MARK X	1	55	20A											
> 98													48916	48910
MODERN MUZZLE LOADING														
> KNIGHT MK-85 BK-92 & T-BOLT (FLAT RECEIVERS)		61	61				49727							
MATTE		61M	61M						S61	S61				
SILVER		61S	61S											
> LK-93 WOLVERINE LEGEND DISC AMERICAN REVOLUTION		45	45						S45	S45				
SILVER		45S	45S											
MOSSBERG														
> 25 26 42 46M 140 142 & 146 45-46 W/ 3/4" DIA. BBLs		12	13					2						
> 43 44 144 46BT & 35		12	16					2						
> 45 46 EARLY MODELS WITH 13/16" DIA. BBLs		12	16					2						
> 680 800 & 695-SHOTGUN (USE DUAL EXTENSION RINGS)		55	55						S55	S55				
> 500AS (PRE 1997) & 600 SHOTGUNS				88										
> 500 (1997+) 590 & 835 SHOTGUNS				417M										
> 1500 & 1700		36	35			40A	49712						48912	48900
MATTE		36M	35M			40A-M			S36	S35		S40A	48913	48901
SILVER		36S	35S			40A-S								
NEW ENGLAND FIREARMS (H & R)														
> HANDY RIFLE HORNET (USE EXTRA HIGH RINGS)				82										
> N.E.F. 10 GAUGE SHOTGUN		19	19											
> HUNTSMAN MUZZLELOADER	8			82										
PUMP SHOTGUNS														
> ALL PUMPS EXCEPT WIN. 42	4							8						
REMINGTON														
> 700 78 40X-L 721 & 725 (ALL LONG ACTIONS)		36	35	98		40A	49712	1					48912	48900
MATTE		36M	35M			40A-M			S36	S35			48913	48901
SILVER		36S	35S			40A-S							48971	
> 700 78 40X-S 722 & 725 (ALL SHORT ACTIONS) 700 MZL. LDR.		36	35	97		40A	49712	1	S36	S35		S40A	48930	48900
MATTE		36M	35M			40A-M			S36	S35		S40A	48931	48901
SILVER		36S	35S			40A-S								
> 710		71	71											
> 788		76	75											
> 7 W/3 HOLES 600 660 & XP-100				70				1						
> 7 W/4 HOLES (NEW IN 1999)MATTE 673		421M	35M						S430	S460				
> 740 742 & 760				62			49715						48948	
> 4 6 74 76 7400 & 7600				93			49714						48914	
> 513S & 513T		43	44											
> 514		16	21					2						
> 514 (NOT DRILLED & TAPPED) & 550	4	12	12											
> 541S & 541T		15	15											
> 552 572 & 581(S)	12					414M								
> 597 597LSS (MATTE)						414S								
SILVER														
> 870 1100 11-87 SHOTGUNS (SEE CONVERTA MOUNT SYSTEM)														
> 11-48 1100 SPORTSMAN 48 & 58 SHOTGUNS								8						
> 788 IN .222 MAG .22/.250 .30/.30 CAL													48978	
> 788 IN .243 6MM .308 CAL													48946	
ROSSI (ALSO SEE INTERARMS)														
> .22/410 MATCHED PAIR COMBO				92A										
RUGER														
> 10/22 IN 22 LONG RIFLE CAL. (GROOVED & DRILLED)	16			TD-9			49711							
MATTE		16		TD-9M										
SILVER		16		TD-9S			49734							
> 10/22 MAG & 77/22 (W/BUILT-IN INTEGRAL MOUNTS) 77-50 ML							49723							
SILVER							49735							
> 96/22 & 96/22 MAGNUM	16			TD-11										
> 44 CARBINE MAGNUM DEERSTALKER		47	68											

MOUNT CHARTS

FIREARM MOUNT APPLICATIONS <small>MAKE: MODEL OF FIREARM COLOR INDICATES FINISH: GLOSS BLACK MATTE BLACK SILVER</small>	NOTES	TOP MOUNT BASES					SEE THRU MOUNT COMPLETE SYSTEMS	SIDE MOUNT BASE <small>USE ONLY WITH 49350 OR 49340 RING BRACKET</small>	GRAND SLAM™ TOP MOUNT BASES-MATTE BLACK				GRAND SLAM™ DOVETAIL BASES	
		STANDARD		EXTENSIONS		1-PC			STANDARD		EXTENSIONS		1-PIECE	2-PIECE
		REAR	FRONT	REAR	FRONT				REAR	FRONT	REAR	FRONT	BASE	BASES
> M77 (ROUND TOP DRILLED) MATTE		79	35			40A						48912	48900	
> M77 (W/BUILT-IN INTEGRAL MOUNTS) SILVER												48913	48901	
> MINI 14 RANCH & MINI 30 (W/BUILT-IN INTEGRAL MOUNT) SILVER														
> MINI 14-NO INTEGRAL MNTS (302) > SILVER (302S)	8					48644								
> SINGLE SIX & SUPER SINGLE SIX (314)	8					48643								
> SECURITY SIX (305)	8					48640								
> BLACKHAWK & SUPER BLACKHAWK (301) SILVER (301S)	8					48638								
> REDHAWK (308S) SILVER	8					48648								
> MARK II PISTOL STANDARD MODELS (306) SILVER (306S)	8 13					48641								
	8 13					48637								
SAKO														
> L579		72	71											
> 72 75 & 78		85	85											
> FINNWOLF														
> FORESTER FINNBEAR & VIXEN (TAPERED DOVETAILS)		67	65										48962	
> WHITETAIL HUNTER MATTE		61	61											
SILVER		61S	61S						S61	S61				
> SAUER														
> 200 MATTE		35	35			40A								
SILVER		35M	35M			40A-M			S35	S35	S40A	S40A		
> 202						40A-S								
> SHR 970		25	25						S459	S460				
SAVAGE														
> 20 340 340E 342 840 & 842E	14							1						
> 24	17			74										
> 24 & 900S (.22 CAL RIFLES W/GROOVED RECEIVERS)	12													
> 93F HEAVY BARREL		16	16											
> 99 1895 & 1899		14	19										48956	
> 10 12 & 16 (SHORT ACTIONS), STRIKER PSTL 510 512 516 S/A 10 ML (2-PIECE ONLY) PRE 2003 MODELS			22	61	46	48920	48902							
MATTE	22	61M	46M				402M		S61	S46		S402	48903	
SILVER	22	61S	46S				402S						48972	
> 110 112 116 (LONG ACTIONS); 210 SHTG 22 (USE X-HIGH RINGS) PRE 2003 MODELS	61	46	413			402	49717	1				48918	48902	
MATTE	22	61M	46M				402M		S61	S46		S402	48903	
SILVER	22	61S	46S				402S						48972	
2400														
> 10 12 110 112 SERIES W/ACCUSTRIGGER STEVENS 200	22	46	46				402							
MATTE	22	46M	46M				402M		S46	S46	S402	S402	48906	
SILVER	22	46S	46S				402S							
SMITH & WESSON														
> MAUSER ACTIONS W/SMALL REC. RING ABOUT 1.30" DIA		55	46				402	1	S55	S46		S402		
> 1500 1600 & 1700 MATTE		36	35				40A	49712					48912	
SILVER		36S	35S				40A-S		S36	S35		S40A	48913	
> 29 629 625 686 & L K & N FRAME RVLRS (FACTORY DRILLED) SILVER	8 17					401								
> L & K FRAME RVLRS (307) SILVER (307S)	8					48642								
> 41 PISTOL	8					48634								
> 2206 TGT PSTL (SILVER)	17					62								
						407S								
SPRINGFIELD														
> 03	6	54	55					1	S54	S55				
> 03-A3	8	59	45											
> STEVENS > 110E MATTE		61	46				402	49717	1					
SILVER		61S	46S				402S		S61	S46		S402		
> SAVAGE/STEVENS 200 MATTE	22	46	46				402		S46	S46	S402	S402	48906	
> STEVENS - SPRINGFIELD > B40	14							1						
TAURUS														
> L K & N FRAME RVLRS (LIKE S&W FACTORY DRILLED)	8 17					401								

MOUNT CHARTS

FIREARM MOUNT APPLICATIONS <small>MAKE: MODEL OF FIREARM COLOR INDICATES FINISH: GLOSS BLACK MATTE BLACK SILVER</small>	NOTES	TOP MOUNT BASES					SEE THRU MOUNT COMPLETE SYSTEMS	SIDE MOUNT BASE <small>USE ONLY WITH 49350 OR 49340 RING BRACKET</small>	GRAND SLAM™ TOP MOUNT BASES-MATTE BLACK				GRAND SLAM™ DOVETAIL BASES			
		STANDARD		EXTENSIONS					REAR	FRONT	REAR	FRONT	REAR	FRONT	1-PIECE BASE	2-PIECE BASES
		REAR	FRONT	1-PC	REAR	FRONT										
SILVER	8 17			401S												
> L & K FRAME RVLRS (307)	8			48642												
SILVER (307S)	8			48634												
THOMPSON CENTER																
> CONTENDER HANDGUN & CONTENDER CARBINE RIFLE				92A												
SILVER				92AS												
> SCOUT RIFLE & SCOUT PISTOL				404												
> THUNDERHAWK & FIREHAWK (2EA. PER PKG.)		406	406				49736									
SILVER		406S	406S													
> ENCORE OMEGA				410												
SILVER				410S												
> SYSTEM 1 & BLACK DIAMOND (2EA. PER PKG.)		411	411													
SILVER		411S	411S													
TIKKA																
> TIKKA W/FLAT RECEIVER		61	61				49727									
MATTE		61M	61M						561	561						
SILVER		61S	61S													
> SAKO DESIGN W/TAPERED DOVETAIL		67	65													
TRADITIONS																
> WHITETAIL W/OCTAGON RECEIVERS	17	61A	61A													
> IN-LINE MUZZLELOADERS W/ROUND RECEIVERS-MATTE		418M	418M													
SILVER		418S	418S													
U. S. CARBINE																
> M1 CARBINE 30 CAL.	20							M								
WEATHERBY																
> VANGUARD	1 22	36	35			40A							48912	48900		
MATTE	1 22	36M	35M			40A-M			536	535		540A	48913	48901		
SILVER	1 22	36S	35S			40A-S										
> MARK V STD. CAL INCL. 240MAG CENTERFIRE PISTOL		36	415													
224 VARMINTMASTER ULTRA LIGHTWEIGHT																
MATTE		36M	415M													
SILVER		36S	415S													
> FN MAUSER STYLE ACTIONS		45	46			402	49721	5	545	546		5402				
SILVER		45S	46S			402S										
> MARK V MAG. CAL EXCEPT 240 MAG.		424	35											48976		
MATTE		424M	35M			40A-M										
WINCHESTER (INCLUDES RANGER MODELS)																
> 52 (HOLE SPACING DIFFERENT)	6 9	25	57					2								
> 52 (HOLE SPACING SAME)	6 9	46	46			402		2								
MATTE	6 9	46M	46M			402M	402M		546	546	5402	5402				
SILVER	6 9	46S	46S			402S	402S									
> LEVER ACTIONS 53 55 64 65 66 71 1886 1892 95 & 1895	4							3A								
> 54 & EARLY MOD. 70 W/SERIAL NO. BELOW #66 350	6	48	46			402		1								
> 70 LONG ACTION (HOLE SPACING SAME) 670 770	9	47	46	96		402	49718	1					48938	48908		
MATTE		47M	46M			402M			547	546		5402		48909		
SILVER		47S	46S			402S										
> 70 LONG ACTION (HOLE SPACING DIFFERENT) & 70 SUPER EXPRESS	9	49A	46			402			549A	546		5402				
> 70 SHORT ACTION (1984+)		47	46	99		402	49718	1					48940	48908		
MATTE		47M	46M			402M			547	546		5402		48909		
SILVER		47S	46S			402S										
> 75 SPORTER		15	30					2								
> 75 TARGET		15	16					2								
> 88 & 100				53			49725							48942		
> 94 PRE '64								3D								
> 94 POST '64 & 94 TRAPPER								3B								
> 94 BIG BORE 375								3C								
> 94 ANGLE-EJECT BIG BORE		95	403													
> 94 ANGLE-EJECT (EXCEPT EARLIEST MODELS)		95	94				49716							48944		
> 94/22	16					TD-10										
> 1200 & 1500 SHOTGUNS (SEE CONVERTA MOUNT SYSTEMS)																
> 1300 & 1400 SHOTGUNS (ALSO SEE CONVERTA MOUNT SYS) MATTE						416M										
> X-150 APEX MUZZLELOADERS		418M	418M													
SILVER		418S	418S													
> 70 WSSM		428	46											48907 (MATTE)		
> 70 W/SERIAL NO BELOW 66 350 (PRE '64)													48936	48934		
> 70 LONG ACTION REAR HOLE SPC .435"																
SHOTGUN MOUNT APPLICATIONS																
> AUTO SHOTGNS EXCEPT 1148 1187 1100 SPTSMN 48 & 58 WIN 50	4							7								
BRWNING DBL AUTO & HIGH STND AUTO																
> BROWNING A-BOLT SHOTGUN MATTE		47M	419M													
> ITHACA DEERSLAYER 37 & 87 (12 16 20 GA.)				62			49715									
> MARLIN 512 SLUG MASTER & 55 (DRILL & TAP) MATTE								10M								
> MOSSBERG 695 SHOTGUN (USE DUAL EXTENSION RINGS)		55	55						555	555						
> MOSSBERG 500AS (PRE 1997) & 600 SHOTGUNS						88										
> MOSSBERG 500 (1997+) 590 & 835 SHOTGUNS						417M										
> NEW ENGLAND FIREARMS (H&R) 10 GAUGE SHOTGUN		19	19													
> PUMP SHOTGUNS - ALL PUMPS EXCEPT WIN. 42	4							8								
> REMINGTON 870 1100 11-87 SHOTGUNS (SEE CONVERTA MOUNT SYSTEMS)								8								
> REMINGTON 11-48 1100 SPORTSMAN 48 & 58 SHOTGUNS								8								
> WINCHESTER 1200 1300 1400 & 1500 SHOTGUNS (SEE CONVERTA MOUNT SYSTEMS)																
> WINCHESTER 1300 & 1400 SHOTGUNS MATTE						416M										

MOUNT CHARTS

PISTOL MOUNT APPLICATIONS <small>MAKE: MODEL OF FIREARM COLOR INDICATES FINISH: GLOSS BLACK MATTE BLACK SILVER</small>	NOTES	TOP MOUNT BASES						SEE THRU MOUNT COMPLETE SYSTEMS	SIDE MOUNT BASE <small>USE ONLY WITH 49350 OR 49340 RING BRACKET</small>	GRAND SLAM™ TOP MOUNT BASES-MATTE BLACK				GRAND SLAM™ DOVETAIL BASES	
		STANDARD			EXTENSIONS					STANDARD		EXTENSIONS		1-PIECE	2-PIECE
		REAR	FRONT	1-PC	REAR	FRONT	REAR			FRONT	REAR	FRONT	BASE	BASES	
> COLT PYTHON KING COBRA & TROOPER MKIII MKV (NOT DRILLED/TAPPED)	8			48639											
> COLT ANACONDA PYTHON & KING COBRA PISTOLS (FACTORY DRILLED/TAPPED)	8 17			412S											
> RUGER SECURITY SIX	8			48640											
> RUGER BLACKHAWK & SUPER BLACKHAWK	8			48638											
SILVER	8			48635											
> RUGER REDHAWK SILVER	8			48648											
> RUGER MARK II PISTOL STANDARD BBL ONLY	8 13			48641											
SILVER	8 13			48637											
> SAVAGE STRIKER PISTOLS 510 512 516	22	61	46				402								
MATTE		61M	46M				402M			S61	S46		S402		
SILVER		61S	46S				402S								
> SMITH & WESSON 29 629 625 686 & L K & N FRAMES	8 17			401											
SILVER	8 17			401S											
> SMITH & WESSON L & K FRAME RVLRS (NOT FACTORY DRILLED/TAPPED)	8			48642											
SILVER	8			48634											
> SMITH & WESSON 41 PISTOL				62											
> SMITH & WESSON 2206 TGT PISTOL SILVER	17			407S											
> TAURUS L K & N FRAME RVLRS (DRILLED/TAPPED)	8 17			401											
SILVER	8 17			401S											
> TAURUS L & K FRAME RVLRS(NOT DRILLED/TAPPED-SEE S&W)															
> THOMPSON CENTER CONTENDER HANDGUN				92A											
SILVER				92AS											
> THOMPSON CENTER ENDURE PISTOL				410											
SILVER				410S											
> HUSQVARNA															
> HUSKY S&W HVA VIKING FFV														48974	

NOTES

- | | |
|--|---|
| <ol style="list-style-type: none"> 1 Shimming is probably required for perfect scope alignment. 2 Rear base may require modifications for correct fit to military actions. 3 Front base may require modification for correct fit. 4 Gun will have to be drilled and tapped. 5 Front base screws must be shortened by grinding. 6 May require bolt and/or safety alteration, otherwise firearm cannot function safely and properly. Consult with a qualified gunsmith. 7 See Modern Muzzleloading for mount listings. 8 Remove rear sight to use. 9 The handiest way to pinpoint the correct base for the Win. 52 & Win. 70 Long action Rifles is to check the spacing of the tapped holes for the rear base and compare it to the hole spacing for the front base. Does it have:

HOLE SPACING THE SAME
Model 52: use 46+ 46, Model 70: use 47+ 46

HOLE SPACING DIFFERENT
Model 52: use 25+ 57 Model 70: use 49A+ 46 10 The Weaver type base built into this rifle will accept Weaver rings but our highest ring (1" See-Thru #49513) still isn't high enough to clear the front sight. | <ol style="list-style-type: none"> 11 The Weaver type base built into this firearm will accept any Detachable Top Mount Weaver Ring. 12 Rifle has Grooved Receiver for Tip-Off Rings. 13 Ruger Mark II Pistols. Weaver only offers a clamp on base with 1" rings (Pistol Mount System #306). Ruger supplies a short or long base and 1" or 30mm rings w/factory drilled and tapped pistols. Contact Ruger at 602-778-6555 for these items. 14 Bolt Clearance problem may exist and scope will not be centered. 15 Base accepts Tip-Off Rings only. 16 TO-9, TO-10 & TO-11 bases accept either Detachable Top Mount Rings or Tip-Off Rings. Each have crossbolt slots and 3/8" grooves for both applications. 17 Must be factory drilled and tapped. 18 One-Piece base attaches to barrel and extends back over receiver. 19 Requires the use of Thompson/Center base adapter. 20 Requires drilling and tapping 4 holes in receiver and relief space cut in stock to clear base. 21 Rear base is positioned on top of receiver and front base is positioned on the barrel. Drilling & tapping required. One-piece base mounts w/2 set screws & newer guns are factory drilled & tapped. 22 For shorter tube scopes or red dot scopes use #402 extension front base or one-piece base if available. Extension base allows an extra .689". |
|--|---|

Onalaska Operations
N5549 County Trunk Z
Onalaska, WI 54650

PLACE
POSTAGE
HERE



AMMUNITION & RELATED PRODUCTS

A unique collection of brands that gives shooting and outdoor enthusiasts everything they need in one place. From ammunition and reloading equipment to gun cleaning chemicals and acces-

sories, ATK Ammunition and Related Products offers advanced, high-performance products. Look for these leading suppliers under the ATK Ammunition and Related Products umbrella:

 ALLIANT POWDER

 FEDERAL
PREMIUM
AMMUNITION

 CCI

 speer™

 RCBS

 Outers®



 CHAMPION™
Traps & Targets

 FUSION™



Shooters Ridge

 RAM-LINE

 GUNSLICK®

 WEAVER

WE PROUDLY SUPPORT

Ducks Unlimited, · The Foundation for North American Wild Sheep, · Izaak Walton League of America,
The National Wild Turkey Federation, Pheasants Forever, · The Rocky Mountain Elk Foundation, · Safari Club International,
Whitetails Unlimited, · Becoming an Outdoors Woman, · Women in The Outdoors, · 4-H Shooting Sports Program,
The Boy Scouts of America, · International Hunter Education Association, and Civilian Marksmanship Program.