

MANAGED-RECOIL™

REDUCE RECOIL TO IMPROVE YOUR CHANCES OF SUCCESS IN THE FIELD. At some point, all shooters feel the negative effects of recoil. Some hunters experience the frustration of missing a target because of flinching. Others know the aggravation of losing the opportunity for a second shot because of the time it takes for scope recovery. Then there's the shoulder pain after a day of hunting or practicing, which may deter future practice sessions. To fight these effects of recoil, Remington® developed Managed-Recoil™ ammunition.

The Managed-Recoil ammunition succeeds where other recoil-control ammunition fails. Past attempts at curbing recoil have focused solely on the amount of gunpowder in the ammunition. Remington's Managed-Recoil focuses on the entire cartridge by incorporating a specially designed bullet built to perform at lower velocities.



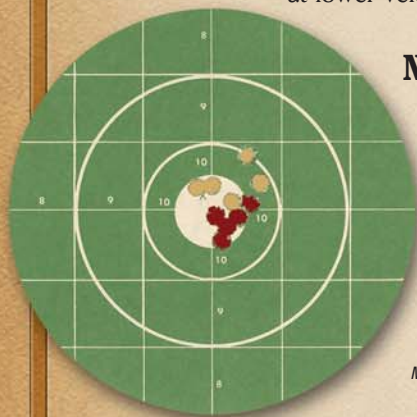
NO SCOPE READJUSTMENT NECESSARY.

Remington® Managed-Recoil™ Point of Impact is nearly identical to full velocity loads.

Point of Impact comparison at 100 yards.

- 30-06 Sprg. 125-grain Managed-Recoil™
- 30-06 Sprg. 150-grain PSP Core-Lokt

May not operate all recoil or gas-operated firearms



Managed-Recoil™ Features:

- Fully effective hunting performance with less than 50% of the recoil of standard cartridges
- Less anticipation of recoil
- Increased shooter confidence and improved shot placement
- Quicker scope recovery for a faster second shot placement
- Point of aim is within 2" of a standard cartridge at 100 yards
- Target practice without the recoil pounding
- Specially designed bullets are optimized to deliver 2x expansion with over 75% weight retention on shots out to 200 yards

Fully effective energy and expansion out to 200 yards:



MANAGED-RECOIL™ APPLICATIONS



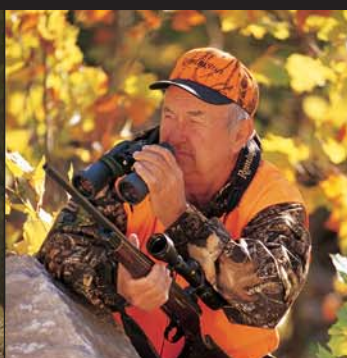
YOUTH AND WOMEN. Managed-Recoil™ allows youth and women to practice and hunt effectively and comfortably with half the recoil. It even lets you use an existing gun without readjusting the scope because "point of aim – point of impact" is nearly identical to standard cartridges at 100 yards.



PRACTICE MAKES PERFECT. For target shooters and hunters who target shoot to improve their performance, Managed-Recoil™ cartridges provide more time on the range, without the bruises to prove it. It offers great hunting performance at ranges out to 200 yards, and you can switch to full-power ammunition without scope adjustment.



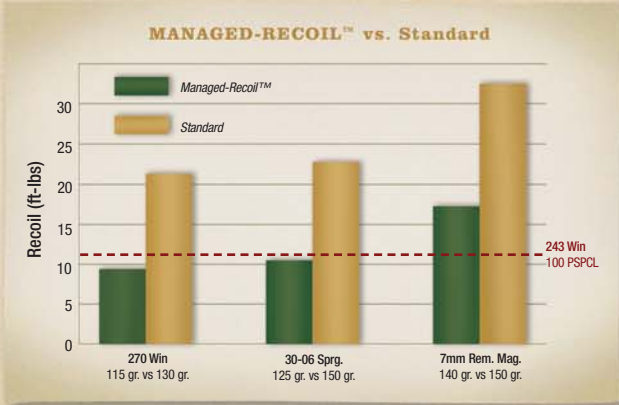
HUNTING WITH CONFIDENCE. Most deer hunting shots are taken well within 200 yards, Managed-Recoil™ cartridges provide effective performance, with less than half the recoil. The result is less anticipation of recoil, better shot placement and quicker scope recovery.



RECOIL-SENSITIVE HUNTERS. For shooters that are unable to tolerate the recoil of a standard cartridge, Managed-Recoil™ Cartridges are the perfect solution. Effective performance with half the recoil.

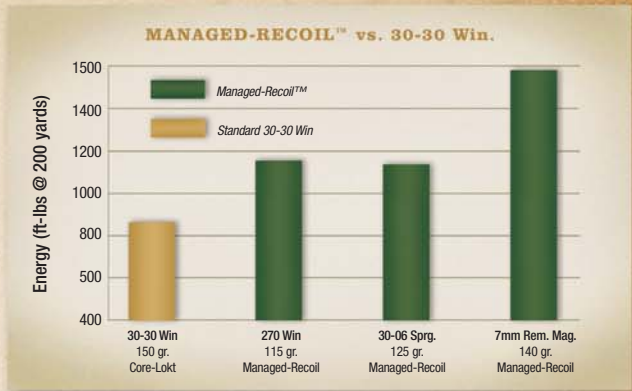
50% LESS RECOIL.

Remington® Managed-Recoil™ centerfire cartridges deliver 50% less recoil than standard velocity ammunition. Managed-Recoil 270 Win, 308 Win and 30-06 actually deliver less recoil than a standard velocity 243 Win!



MORE ENERGY THAN THE 30-30.

Energy levels of Managed-Recoil™ centerfire cartridges exceed the 30-30 Win (one of the most popular deer cartridges ever made). In fact, all Managed-Recoil centerfire ammunition exceeds 1100 foot-pounds of energy at 200 yards.



Caliber	Index/EDI No.	Bullet Wt. (grs.)	Bullet Type	Velocity (ft./sec.)					Energy (ft.-lbs.)					Trajectory			
				Muzzle	50	100	150	200	Muzzle	50	100	150	200	50	100	150	200
REMINGTON® MANAGED-RECOIL™ CENTERFIRE RIFLE CARTRIDGES																	
270 Win.	RL270W2	115	Core-Lokt® PSP	2710	2558	2412	2270	2133	1875	1671	1485	1315	1161	0.1	zero	-1.6	-4.8
30-06 Springfield	RL30062	125	Core-Lokt® PSP	2660	2495	2335	2182	2034	1964	1727	1513	1321	1148	-0.1	zero	-1.5	-4.9
300 Win. Mag.	RL300W1	150	Core-Lokt® PSP	2650	2509	2373	2241	2113	2339	2097	1875	1672	1486	-0.1	zero	-1.5	-4.7
308 Win.	RL308W1	125	Core-Lokt® PSP	2660	2501	2348	2199	2057	1964	1736	1529	1342	1174	-0.1	zero	-1.5	-4.9
7mm Rem. Mag.	RL7MM4	140	Core-Lokt® PSP	2710	2594	2482	2372	2265	2283	2092	1915	1749	1595	0.0	zero	-1.5	-4.5

PREMIER® ACCUTIP™

THE MOST ACCURATE RAPID EXPANSION POLYMER-TIPPED BULLET AVAILABLE.

Premier® AccuTip's precision-engineered polymer tip provides match type accuracy, and more energy on-game combined with rapid expansion. This year, we've expanded our Varmint offerings to include 204 Ruger. The efficient design of the 204 Ruger cartridge achieves an amazing 4,225 feet-per-second velocity at the muzzle, yet consumes less powder than other high performance varmint cartridges. Remington® Premier AccuTip™ delivers a higher ballistic coefficient for super flat trajectory and higher retained energy. Choose Premier AccuTip for deer-sized game or AccuTip-V for varmint hunting. Either way, Remington AccuTip delivers a performance that blows the competition away.



243 Win, 95-gr. Premier® AccuTip™ 5 shots, .4", 100 yds.

ACCUTIP-V™
Also available in varmint calibers with the thin-jacketed AccuTip-V bullet for explosive performance.

Caliber	Index/EDI No.	Bullet Wt. (grs.)	Bullet Type
PREMIER ACCUTIP			
17 Remington	PRA17RA	20	AccuTip-V™
204 Ruger	PRA204A	32	AccuTip-V™
204 Ruger	PRA204B	40	AccuTip-V™ Boat Tail
221 Rem. Fireball	PRA221FB	50	AccuTip-V™ Boat Tail
22 Hornet	PRA22HNA	35	AccuTip-V™
222 Remington	PRA222RB	50	AccuTip-V™ Boat Tail
223 Remington	PRA223RB	50	AccuTip-V™ Boat Tail
223 Remington	PRA223RC	55	AccuTip-V™
22-250 Remington	PRA2250RB	50	AccuTip-V™ Boat Tail
243 Win	PRA243WB	75	AccuTip-V™ Boat Tail
243 Win	PRA243WA	95	AccuTip™
260 Remington	PRA260RA	120	AccuTip™ Boat Tail
270 Win	PRA270WA	130	AccuTip™ Boat Tail
280 Remington	PRA280RA	140	AccuTip™ Boat Tail
7mm-08 Remington	PRA7M08RB	140	AccuTip™ Boat Tail
7mm Remington Mag	PRA7MMRB	150	AccuTip™ Boat Tail
30-06 Springfield	PRA3006A	150	AccuTip™ Boat Tail
30-06 Springfield	PRA3006B	165	AccuTip™ Boat Tail
300 Win Mag	PRA300WC	180	AccuTip™ Boat Tail
308 Win	PRA308WB	165	AccuTip™ Boat Tail

AccuTip-V™: Varmint Specific Cartridges

UMC® AMMUNITION

UMC® RIFLE CARTRIDGES. Made in the USA, value-priced and ideal for high volume shooting, our UMC centerfire rifle ammunition is loaded in seven popular calibers including the 30-06 Sprg, 308 Win, 7.62x39mm, 30 Carbine and 303 British. Two new 50 grain jacketed hollow point loads in 223



Remington and 22-250 Remington are perfect for varmint hunters.

LOOK FOR UMC IN MONEY-SAVING LARGE-QUANTITY PACKAGING.



UMC® LEADLESS™ HANDGUN CARTRIDGES. A must-have for shooters that frequent indoor ranges, economical UMC® LeadLess™ cartridges virtually eliminate lead exposure at the firing line. Specially designed bullet actually prevents the vaporization of lead from the bullet's base upon firing.

Standard bullet weights duplicate the ballistics of conventional loads.

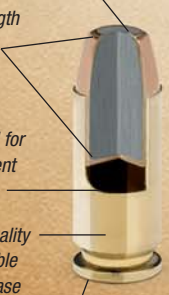


Nose profile designed to function smoothly in all action types

Full-length copper jacket

Powder blended for consistent velocity

High-quality reloadable brass case



Solid lead core protected by thick copper jacket

Enclosed base virtually eliminates airborne lead at firing line

Clean-shooting, lead-free priming



UMC® HANDGUN CARTRIDGES. All UMC ammunition is American-made in Lonoke, Arkansas using first-quality factory-

fresh brass and clean-shooting Kleanbore® primers to provide the best value for practice, personal defense and hunting.

1 Caliber	Index/ EDI No.	Primer No.	Wt. (grs.)	Bullet Style	Velocity (ft./sec.)			Energy (ft.-lbs.)			Mid-range Trajectory	
					Muz.	50 yds.	100 yds.	Muz.	50 yds.	100 yds.	50 yds.	100 yds.
UMC® LEADLESS™ HANDGUN CARTRIDGES												
9mm Luger	LL9MM2	1 ½	124	FNEB	1100	1030	971	339	292	252	1.0"	4.1"
	LL9MM11	1 ½	115	FNEB	1135	1041	973	329	277	242	0.9"	4.0"
357 Magnum	LL357M1	5 ½	125	FNEB	1450	1240	1090	583	427	330	0.6"	2.8"
38 Special	LL38S17	1 ½	125	FNEB	850	822	796	201	188	176	1.4"	6.4"
38 Special+P	LL38S2	1 ½	125	FNEB	975	935	899	264	242	224	1.2"	4.9"
380 Auto	LL380AP2	1 ½	95	FNEB	955	865	785	190	160	130	1.4"	5.9"
40 S & W	LL40SW5	5 ½	180	FNEB	985	936	893	388	350	319	1.4"	5.0"
45 Auto	LL45AP8	2 ½	230	FNEB	835	800	767	356	326	300	1.6"	6.8"
UMC® HANDGUN CARTRIDGES												
9mm Luger	L9MM3	1 ½	115	MC	1135	1041	973	329	277	242	0.9"	4.0"
	L9MM3B1	1 ½	115	MC	1135	1041	973	329	277	242	0.9"	4.0"
	L9MM1	1 ½	115	JHP	1155	1047	971	341	280	241	0.9"	3.9"
	L9MM2	1 ½	124	MC	1100	1030	971	339	292	259	1.0"	4.1"
	L9MM9	1 ½	147	MC	990	941	900	320	289	264	1.1"	4.9"
10mm Auto	L10MM6	2 ½	180	MC	1150	1063	998	529	452	398	0.9"	3.7"
25 Auto (6.35mm)	L25AP	1 ½	50	MC	760	707	659	64	56	48	2.0"	8.7"
32 Auto	L32AP	1 ½	71	MC	905	855	810	129	115	97	1.4"	5.8"
357 Magnum**	L357M12	5 ½	125	JSP	1450	1240	1090	583	427	330	0.6"	2.8"
357 Sig.	L357S1	5 ½	125	MC	1350	1146	1018	506	422	359	0.7"	3.3"
	L357S2	5 ½	125	JHP	1350	1157	1032	506	372	296	0.7"	3.2"
38 Super Auto+P	L38SUP	1 ½	130	MC	1215	1099	1017	426	348	298	0.8"	3.6"
38 Special+P**	L38S2	1 ½	125	JHP	945	898	858	248	224	204	1.3"	5.4"
38 Special	L38S5	1 ½	158	LRN	755	723	692	200	183	168	2.0"	8.3"
	L38S11	1 ½	130	MC	790	766	743	173	163	153	1.7"	7.2"
380 Auto	L380AP	1 ½	95	MC	955	865	785	190	160	130	1.4"	5.9"
40 S & W	L40SW2	5 ½	180	JHP	1015	960	914	412	368	334	1.3"	4.5"
	L40SW3	5 ½	180	MC	985	936	893	388	350	319	1.4"	5.0"
	L40SW4	5 ½	165	MC	1150	1040	964	485	396	340	1.0"	4.0"
44 Rem. Mag**	L44MG7	2 ½	180	JSP	1610	1365	1175	1036	745	551	0.5"	2.3"
45 Auto	L45AP1	2 ½	185	MC	1015	955	907	423	375	338	1.1"	4.8"
	L45AP4	2 ½	230	MC	835	800	767	356	326	300	1.6"	6.8"
	L45AP7	2 ½	230	JHP	835	800	767	356	326	300	1.6"	6.8"
45 GAP	L45GAP4	2 ½	230	MC	880	841	805	395	361	331	1.5"	6.2"
	L45GAP7	2 ½	230	JHP	880	841	805	395	361	331	1.5"	6.2"

Caliber	Index/ EDI No.	Primer No.	Wt. (grs.)	Bullet Style	Velocity (ft./sec.)			Energy (ft.-lbs.)			Short-range Trajectory (in inches)					
					Muz.	100 yds.	200 yds.	Muz.	100 yds.	200 yds.	50	100	150	200	250	300
UMC® CENTERFIRE RIFLE CARTRIDGES																
223 Remington	L223R3	7 ½	55	MC	3240	2759	2326	1282	929	660	-0.1	0.6	zero	-1.9	-5.5	-11.0
	L223R7	7 ½	45	JHP	3550	2953	2430	1259	871	590	-0.1	0.4	zero	-1.7	-4.8	-9.7
	L223R7A3	7 ½	45	JHP	3550	2953	2430	1259	871	590	-0.1	0.4	zero	-1.7	-4.8	-9.7
	L223R7B2	7 ½	45	JHP	3550	2953	2430	1259	871	590	-0.1	0.4	zero	-1.7	-4.8	-9.7
	L223R8	7 ½	50	JHP	3425	2899	2430	1302	933	655	-0.1	0.5	zero	-1.7	-4.9	-9.9
	L223R8B2	7 ½	50	JHP	3425	2899	2430	1302	933	655	-0.1	0.5	zero	-1.7	-4.9	-9.9
22-250 Rem	L22503	9 ½	45	JHP	4000	3340	2770	1598	1114	767	-0.3	0.2	zero	-1.2	-3.5	-7.2
	L22503B2	9 ½	45	JHP	4000	3340	2770	1598	1114	767	-0.3	0.2	zero	-1.2	-3.5	-7.2
	L22504	9 ½	50	JHP	3820	3245	2739	1620	1169	833	-0.1	0.8	0.9	zero	-2.0	-5.4
	L22504B2	9 ½	50	JHP	3820	3245	2739	1620	1169	833	-0.1	0.8	0.9	zero	-2.0	-5.4
7.62x39mm	L762391	7 ½	123	MC	2365	2060	1780	1527	1159	865	0.1	zero	-2.2	-6.8	-14.1	-24.5
30 Carbine	L30CR1	6 ½	110	MC	1990	1567	1236	967	600	373	0.6	zero	-4.2	-12.9	-27.2	-48.6
308 Win.	L308W4	9 ½	150	MC	2820	2533	2263	2648	2137	1705	-0.1	zero	-1.1	-3.9	-8.4	-14.7
30-06 Sprgfl.	L30062	9 ½	150	MC	2910	2617	2342	2820	2281	1827	-0.2	zero	-1.2	-3.6	-7.7	-13.6
303 British	L303B1	9 ½	174	MC	2475	2209	1960	2366	1885	1484	0.1	zero	-1.9	-5.9	-12.2	-21.4

**Note: These ballistics reflect vented barrel. 1 Packed 100 rounds per box. 2 Packed 40 rounds per box. 3 Packed 200 rounds per box. MC = Metal Case / FNEB = Flat Nose Enclosed Base / JHP = Jacketed Hollow Point / JSP = Jacketed Soft Point / LRN = Lead Round Nose

RIMFIRE



PREMIER GOLD BOX™ RIMFIRE. Looking for a rimfire cartridge with a centerfire attitude? Remington's got you covered with our complete line of Premier Gold Box Rimfire ammunition. This year we've added the Premier 17 Mach 2 Cartridge to the Premier Gold Box family. The 17 Mach 2 develops a velocity 40% higher and a trajectory nearly seven inches flatter at 150 yards than a 22 LR. Now, targets at ranges you never thought possible are within reach thanks to its sleek AccuTip™-V bullet and high performance cartridge design.

Caliber	Index/EDI No.	Wt. (grs.)	Bullet Style	Velocity (ft./sec.)			Energy (ft.-lbs.)			Trajectory**		
				Muz.	50 yds.	100 yds.	Muz.	50 yds.	100 yds.	50 yds.	100 yds.	150 yds.
Premier® 17 HMR	PR17HM1	17	AccuTip-V	2550	2212	1901	245	185	136	0.1	0.0	-2.6
Premier® 22 Win Mag	PR22M1	33	AccuTip-V	2000	1730	1495	293	219	164	0.6	0.0	-4.5
Premier® 17 Mach 2	PR17LR	17	AccuTip-V	2100	1801	1532	166	122	88	0.7	0.0	-4.4



COMPETITION/TARGET RIMFIRE. When it comes to competition-grade rimfire ammunition, there's only one name good enough to share the Remington® brand – Eley. A company with a reputation for the world's most accurate and reliable rimfire ammunition, Eley, Ltd. has teamed up with Remington to offer three grades of their premier .22 long rifle ammunition for the serious target shooter: Target Rifle, Club XTRA and the elite Match EPS. Remington Target ammunition offers the accuracy and economy for Match practice and developmental shooting.

Caliber	Index/EDI No.	Wt. (grs.)	Bullet Style	Velocity (ft./sec.)			Energy (ft.-lbs.)			Trajectory**		
				Muz.	50 yds.	100 yds.	Muz.	50 yds.	100 yds.	50 yds.	100 yds.	150 yds.
Remington/Eley												
22 Match EPS	RE22EPS	40	Lead Flat Nose	1085	1006	941	105	90	79	0.3	0.0	-2.4
22 Club Xtra	RE22CX	40	Lead Round Nose	1085	1006	941	105	90	79	0.3	0.0	-2.4
22 Target Rifle	RE22T	40	Lead Round Nose	1085	1006	941	105	90	79	0.3	0.0	-2.4
Remington Target												
22 Long Rifle	6122/6100+	40	Round Nose	1150	1048	976	117	98	85	0.2	0.0	-2.1



RIMFIRE. Prairie dogs. Tin cans. Or a bulls-eye. No matter what you put in your sights, Remington® offers the perfect .22 rimfire ammunition for any occasion. With Remington, you know your getting quality rounds. That's because we put the same level of care into making our rimfire ammunition as we do our centerfire ammunition, so you'll get the maximum performance from every shot.

Caliber	Index/EDI No.	Wt. (grs.)	Bullet Style	Velocity (ft./sec.)			Energy (ft.-lbs.)			Trajectory**		
				Muz.	50 yds.	100 yds.	Muz.	50 yds.	100 yds.	50 yds.	100 yds.	150 yds.
Magnum												
22 Win Mag	R22M1	40	Jacketed Hollow Point	1910	1610	1350	324	230	162	0.9	0.0	-5.7
	R22M2	40	Pointed Soft Point	1910	1600	1340	324	227	159	1.0	0.0	-5.8
Caliber	Index/EDI No.	Wt. (grs.)	Bullet Style	Velocity (ft./sec.)			Energy (ft.-lbs.)			Trajectory**		
Short												
22 Short	1022	29	Plated Lead Round Nose	1095	982	903	77	62	52	0.3	0.0	-2.5
High Velocity												
22 Long Rifle	1522/1500+	40	Plated Lead Round Nose	1255	1113	1017	140	110	92	0.0	0.0	-1.8
	1622/1600+	36	Plated Hollow Point	1280	1117	1010	131	100	82	0.0	0.0	-1.8
Hyper Velocity												
22 Yellow Jacket® Long Rifle	1722	33	Truncated Cone Hollow Point	1500	1247	1075	165	114	85	-0.2	0.0	-1.2
22 Viper® Long Rifle	1922	36	Truncated Cone Solid	1410	1198	1056	159	115	89	-0.1	0.0	-1.4
Long Rifle Shot												
Long Rifle Shot	9322	25	#10 Shot	—	—	—	—	—	—	—	—	—
Subsonic™												
22 Subsonic Long Rifle	SUB22HP	38	Hollow Point	1050	965	901	93	79	69	0.3	0.0	-2.6
Promotional												
22 Thunderbolt® Long Rifle	TB 22A	40	Round Nose	1255	1113	1017	140	110	92	0.0	0.0	-1.8
22 Cyclone® Long Rifle	CY 22HP	36	Hollow Point	1280	1117	1010	131	100	82	0.0	0.0	-1.8
22 Long Rifle (High Velocity)	GL 22HP	36	Hollow Point	1280	1117	1010	131	100	82	0.0	0.0	-1.8

**Note: Sight height 1.5" above axis of bore. + These long rifle 22s available in slide-open plastic packs of 100.

TURKEY LOADS

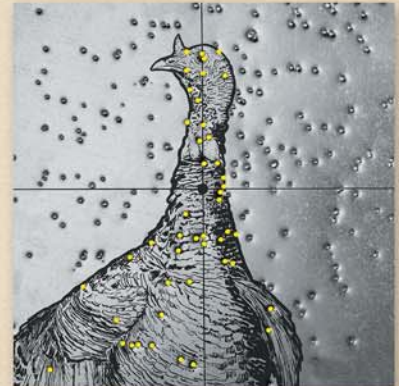


HEVI•SHOT® TURKEY FEATURES:

- Routinely achieves patterns in excess of 90%
- Made of a tungsten, nickel and iron alloy
- Yields a 10% higher density than lead
- Special shot collar protects barrel and chokes
- Superior product for serious turkey hunters

PREMIER® HEVI•SHOT® MAGNUM TURKEY LOADS.

Premier® Hevi•Shot® Magnum Turkey loads, available in 10-, 12- and 20-gauge, routinely achieve patterns in excess of 90%. And because Hevi•Shot pellets are made of a tungsten, nickel and iron alloy, they yield a 10% higher density than lead, which creates denser patterns and delivers higher energy. Better than lead, Hevi•Shot® Turkey is a superior product for serious turkey hunters.



Premier® Hevi•Shot® routinely achieves patterns in excess of 90% efficiency with Remington's optimal Hevi•Shot choke tube.



**NEW
FOR 2006**

NITRO TURKEY™ EXTENDED RANGE BUFFERED MAGNUMS.

- Copper shot performance, value price
- Nitro Mag® extra hard lead shot
- Patterns over 80% with Super Full choke

Index/EDI No.	Gauge	Shell Length	Velocity (ft./sec. @ 3 ft.)	Ounces of Shot	Shot Sizes
PREMIER® HEVI•SHOT® HIGH VELOCITY MAGNUM TURKEY LOADS – BUFFERED					
PRHSHV12M	12	3"	1300	1 ½	4, 5, 6
PRHSHV1235M	12	3 ½"	1300	1 ¼	4, 5, 6
PREMIER® HEVI•SHOT® MAGNUM TURKEY LOADS – BUFFERED					
PRHS10M	10	3 ½"	1225	1 ⅞	4, 5, 6
PRHS12SM	12	2 ¾"	1250	1 ⅞	4, 5, 6
PRHS12HM	12	3"	1225	1 ⅞	4, 5, 6
PRHS1235M	12	3 ½"	1225	1 ⅞	4, 5, 6
PRHS20M4	20	3"	1175	1 ¼	4, 5, 6
NITRO TURKEY™ LOADS – BUFFERED					
NT12H4	12	3"	1210	1 ⅞	4
NT12H5	12	3"	1210	1 ⅞	5
NT12H6	12	3"	1210	1 ⅞	6

LEAD MAGNUMS

PREMIER® HIGH VELOCITY MAGNUM COPPER-PLATED BUFFERED TURKEY LOADS. The high-performance lead load for avid turkey hunters. 3" and 3 1/2" 12-gauge payload leaves the muzzle at 1300 fps. Delivers hard-hitting knockdown power. Loaded with our Power Piston® one-piece wad and Magnum-grade Copper-Lokt® lead shot for dense patterns and deep penetration.



PREMIER® MAGNUM COPPER-PLATED BUFFERED TURKEY LOADS. Our original Magnum turkey loads. As fine a lead shotshell as you can carry in the woods. Magnum-grade Copper-Lokt® shot is cushioned with special polymer buffering and further protected by our Power Piston® one-piece wad for dense, even patterns. Delivers superb performance and devastating knockdown power out of tightly constricted turkey chokes.



NITRO MAG® BUFFERED MAGNUMS. Excellent for turkey or long-range pheasants. Heavy payloads of Magnum-grade shot are packed with shock-absorbing polymer buffering and enclosed in our patented Power Piston® one-piece wad to provide dense, even patterns and uniform shot strings.

PREMIER® DUPLEX® MAGNUM COPPER-PLATED BUFFERED LOADS. A specialized layering of Magnum-grade Copper-Lokt® No. 4 shot over No. 6 shot.

Index/EDI No.	Gauge	Shell Length	Velocity (ft./sec. @ 3 ft.)	Ounces of Shot	Shot Sizes
PREMIER® HIGH VELOCITY MAGNUM COPPER PLATED TURKEY LOADS – BUFFERED					
PHV12M	12	3"	1300	1 3/4	4, 5, 6
PHV1235M	12	3 1/2"	1300	2	4, 5
PREMIER® MAGNUM COPPER PLATED LEAD TURKEY LOADS – BUFFERED					
P10HM	10	3 1/2"	1210	2 1/4	4, 6
P12SM	12	2 3/4"	1260	1 1/2	4, 5, 6
P12XHM	12	3"	1175	2	4, 5, 6
P1235M	12	3 1/2"	1150	2 1/4	4, 6
P20XHM	20	3"	1185	1 1/4	6
PREMIER® DUPLEX® MAGNUM COPPER PLATED LOADS – BUFFERED					
MP12S	12	2 3/4"	1260	1 1/2	4x6
MP12H	12	3 1/2"	1210	1 1/8	4x6
NITRO MAG® LEAD LOADS – BUFFERED					
NM12S	12	2 3/4"	1260	1 1/2	2, 4, 6
NM12	12	3"	1280	1 3/8	4, 6
NM12H	12	3"	1210	1 1/8	2, 4, 6
NM20S	20	2 3/4"	1175	1 1/8	4, 6
NM20H	20	3"	1185	1 1/4	4, 6



TARGET LOADS

PREMIER® NITRO 27® HANDICAP TRAP LOADS.

Designed for long yardage trapshooting and long range sporting clays, our new powder, wad and primer mix have improved the Nitro 27's performance, allowing more consistent velocities, 15% better pattern performance and softer recoil. So if you're looking for tremendous target-breaking performance choose the improved Nitro 27.



EXPANDED GUN CLUB™ TARGET LOAD LINE. An excellent choice for economical shooting. These high-quality shells are loaded with

the same care as our top-of-the-line loads and now feature the reliable STS® Primer. Many shooters are discovering that they can get acceptable reloading life while stretching their shooting dollar.

PREMIER® STS® TARGET. The standard in target shooting reliability. Absolutely consistent from shot to shot. Bar none, the most reliable, most reloadable shells you can shoot. Available in 12, 20, 28 and 410.



Harlan Campbell, Jr.
Men's Trap
All-American
Team Captain

GRAND DOMINATION

Competitors at the Grand choose Remington® as their winning ammunition. Great champions think alike. For the second year in a row, shooters who used Remington shells won more trophies than competitors using other brands at the 2004 ATA Grand American World Trapshooting Championship. Remington not only out-performed other ammunition in the competition, but it also sold more than any other brand at the

Grand. And for good reason! Remington STS® and Nitro 27® target loads provide softer recoil, better pattern performance, and more consistent velocities (not to mention the most reloadable hull on the market). Isn't it time you switch to Remington and step into the winner's circle?



Great champions think alike. For the second year in a row, shooters who used Remington shells won more trophies than competitors using other brands at the 2004 ATA Grand American World Trapshooting Championship. Remington not only out-performed other ammunition in the competition, but it also sold more than any other brand at the

Index/EDI No.	Gauge/ Bore	Load Type	Shell Length	Powder Dr. Eq.	Velocity (ft./sec. @ 3 ft.)	Ounces Of Shot	Shot Sizes
PREMIER® STS® TARGET LOADS – EXTRA HARD TARGET SHOT							
STS121	12	Premier STS Target	2 3/4"	2 3/4	1185	1	7 1/2, 8, 8 1/2, 9
STS12LR	12	Premier STS Low Recoil	2 3/4"	2 1/2	1100	1 1/8	7 1/2, 8, 9
STS12L	12	Premier STS Light Target	2 3/4"	2 3/4	1145	1 1/8	7 1/2, 8, 8 1/2, 9
STS12LH	12	Premier STS Light Handicap	2 3/4"	3	1200	1 1/8	7 1/2, 8
STS12H	12	Premier STS Heavy Target	2 3/4"	3	1200	1 1/8	9
STS12NH1	12	Premier Nitro 27 Handicap	2 3/4"	HNDPCP	1290	1	7 1/2, 8
STS12NH	12	Premier Nitro 27 Handicap	2 3/4"	HNDPCP	1235	1 1/8	7 1/2, 8
STS12NSC	12	Premier STS Nitro Sporting Clays	2 3/4"	Max	1300	1 1/8	7 1/2, 8
STS12P	12	Premier STS Pigeon	2 3/4"	3 1/4	1235	1 1/4	7 1/2, 8
STS12IT	12	Premier STS International	2 3/4"	3 1/4	1325	24 gm.	7 1/2, Cu-P*, 8 1/2
STS20LR	20	Premier STS Low Recoil	2 3/4"	2 1/2	1135	7/8	8, 9
STS20SC	20	Premier STS Target	2 3/4"	2 1/2	1200	7/8	8
STS20	20	Premier STS Target	2 3/4"	2 1/2	1200	7/8	9
STS20H	20	Premier STS Target	2 3/4"	—	1200	1	9
STS28SC	28	Premier STS Target	2 3/4"	2	1200	3/4	8
STS28	28	Premier STS Target	2 3/4"	2	1200	3/4	9
STS410SC	.410	Premier STS Target	2 1/2"	Max	1200	1/2	8 1/2
STS410	.410	Premier STS Target	2 1/2"	Max	1200	1/2	9
GUN CLUB™ TARGET LOADS							
GC121	12	Gun Club	2 3/4"	2 3/4	1185	1	7 1/2, 8
GC12L	12	Gun Club	2 3/4"	2 3/4	1145	1 1/8	7 1/2, 8, 9
GC12	12	Gun Club	2 3/4"	3	1200	1 1/8	7 1/2, 8
GC20	20	Gun Club	2 3/4"	2 1/2	1200	7/8	7 1/2, 8, 9

* Copper-plated shot.

COMPONENTS

REMINGTON RELOADING COMPONENTS. If you reload your own cartridges, then you shouldn't settle for anything but the best reloading components in the business – Remington.[®] We offer industry-leading products that are changing the way sportsmen think about reloading.

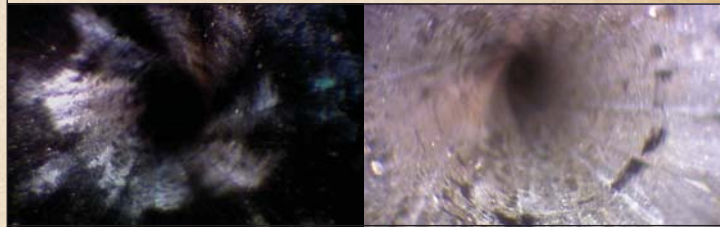


KLEANBORE[®] MUZZLELOADING PRIMERS.

Introducing the cleanest-burning muzzleloader primer ever.

- From 2 to 15 times more shots between cleanings
- Dramatically reduced chamber buildup for easier bullet seating
- Specifically designed for black powder substitutes
- Accuracy and velocity equal to standard shotshell primers

Index/EDI No. – 209ML



Bore scope photo of muzzleloader breech using a competitor's 209 primers after 2 shots.

Bore scope photo of muzzleloader breech using Remington[®] Kleanbore[®] primers after 15 shots.

Index/EDI No.	Description
ETRONX[™] ELECTRIC CENTERFIRE PRIMERS	
XEL22610	9 1/2 Large Rifle (Electric)
CENTERFIRE PRIMERS	
X22600	1 1/2 Small Pistol
X22604	2 1/2 Large Pistol
X22625	5 1/2 Small Pistol
X22606	6 1/2 Small Pistol
X22628	7 1/2 Small Rifle BR
X22608	9 1/2 Large Rifle
X22622	9 1/2 M Magnum Rifle
CONSUMER PACK RIFLE BULLETS	
RB2241	224, 45-grain HP
RB2242	224, 50-grain PSP
RB224P1	224, 50-grain PLHP
RB2244	224, 55-grain MC
RB2243	224, 55-grain PSP
RB224P2	224, 55-grain PLHP
RB2247	224, 62-grain HP Match
RB243P1	243, 80-grain PLHP
RB2432	243, 80-grain PSP
RB2433	243, 100-grain PSP Core-Lokt
RB2571	257, 100-grain PSP Core-Lokt
RB2642	264, 140-grain PSP Core-Lokt
RB2682	6.8mm, 115-grain MC
RB2772	277, 130-grain PSP Core-Lokt
RB2842	264, 150-grain PSP Core-Lokt
RB3085	308, 150-grain MC
RB3081	308, 150-grain PSP Core-Lokt
RB3083	308, 180-grain PSP Core-Lokt
RB30301	308 (30-30), 150-grain SP Core-Lokt
RB303B	310 303, 180-grain SP Core-Lokt
RB3231	323, 185-grain PSP Core-Lokt
RB4571	457, 300-grain S.JHP
CONSUMER PACK PISTOL BULLETS	
RB9MM3	9MM Caliber, 115 MC
RB9MM11	9MM Caliber, 115 FNEB
RB9MM5	9MM Caliber, 115 JHP
RB9MM2	9MM Caliber, 124 MC

Index/EDI No.	Description
CONSUMER PACK PISTOL BULLETS (cont.)	
RB9MM8	9MM Caliber, 147 JHP
RB380AP	356 380 Auto, 95 MC
RB38S11	356 38 Special, 130 MC
RB357M7	357/38 Caliber, 110 S.JHP
RB357M1	357/38 Caliber, 125 S.JHP
RB357M2	357/38 Caliber, 158 S.JHP
RB40SW1	40/10mm Caliber, 155 JHP
RB40SW3	40/10mm Caliber, 180 MC
RB40SW5	40/10mm Caliber, 180 FNEB
RB40SW2	40/10mm Caliber, 180 JHP
RB41MG1	41 Caliber, 200 S.JHP
RB44MG6	44 Caliber, 210 S.JHP
RB44MG3	44 Caliber, 240 S.JHP
RB45AP4	45 Automatic, 230 MC
RB45AP8	45 Automatic, 230 FNEB
RB45AP7	45 Automatic, 230 JHP
CONSUMER PACK RIFLE BRASS	
RC17R	17 Remington
RC204R	204 Ruger
RC22H	22 Hornet
RC221FB	221 Fireball
RC222R	222 Remington
RC223R	223 Remington
RC2250R	22-250 Remington
RC220S	220 Swift
RC243W	243 Win
RC6MMR	6mm Remington
RC2506R	25-06 Remington
RC2520W	25-20 Win
RC257R	257 Roberts
RC65S	6.5x55 Swedish Mauser
RC260R	260 Remington
RC68SPCR	6.8mm Remington SPC
RC270W	270 Win
RC7M08R	7mm-08 Remington
RC7MMG	7mm Remington Magnum
RC7MMRS	7mm Remington SA Ultra Magnum

Index/EDI No.	Description
CONSUMER PACK RIFLE BRASS (cont.)	
RC7MMRA	7mm Remington Ultra Magnum
RC280R	280 Remington
RC3030W	30-30 Win
RC300RS	300 Remington SA Ultra Magnum
RC300RA	300 Remington Ultra Magnum
RC3006	30-06 SPRG
RC300WM	300 Win Mag
RC303B	303 British
RC308W	308 Win
RC3220W	32-20 Win
RC8MSR	8mm Mauser
RC8MMG	8mm Remington Magnum
RC338W	338 Win Mag
RC338RA	338 Remington Ultra Magnum
RC350R	350 Remington Magnum
RC35W	35 Whelen
RC375H	375 H&H Magnum
RC375RA	375 Remington Ultra Magnum
RC4440W	44-40 Win
RC4570G	45-70 Government
CONSUMER PACK PISTOL BRASS	
RC357MG	357 Magnum
RC357X	357 Maximum
RC9MM	9mm Luger
RC38AS	38 Super Auto+P
RC38SP	38 Special
RC40SW	40 S&W
RC41RA	41 Remington Magnum
RC44RA	44 Remington Magnum
RC44SW	44 S&W
RC45C	45 Colt
RC45A	45 Auto
RC454C	454 Casull

BR = Bench Rest / FNEB = Flat Nose Enclosed Base / HP = Hollow Point
 JHP = Jacketed Hollow Point / MC = Metal Case / PLHP = Power Lokt Hollow Point
 PSP = Pointed Soft Point / S.JHP = Semi-Jacketed Hollow Point / SP = Soft Point

AMMUNITION SPECIFICATIONS

PREMIER ACCUTIP (PACKED 50 ROUNDS PER BOX, 100 BOXES PER CASE, 5000 ROUNDS PER CASE)

Index #	Order #	Bullet Style	Bullet Wt. Grains	Cartridge	Avg. Wt. Case	UPC (0 47700) Box No.	UPC (0 47700) Case No.
PRA17RA	29162	AccuTip™-V	20	17 Remington	5	36380 6	36381 3
PRA204A	29218	AccuTip™-V	32	204 Ruger	5	38310 1	38311 8
PRA204B	29220	AccuTip™-V, Boat Tail	40	204 Ruger	5	38320 0	38321 7
PRA22HNA*	29154	AccuTip™-V	35	22 Hornet	9	38440 5	38441 2
PRA221FB	29172	AccuTip™-V, Boat Tail	50	221 Fireball	4	36620 3	36621 0
PRA222RB	29174	AccuTip™-V, Boat Tail	50	223 Remington	4	36630 2	36631 9
PRA223RB	29184	AccuTip™-V, Boat Tail	50	223 Remington	5	36640 1	36641 8
PRA223RC	29192	AccuTip™-V	55	223 Remington	5	38170 1	38171 8
PRA225ORB	29186	AccuTip™-V, Boat Tail	50	22-250 Remington	6	36650 0	36651 7
PRA243WB	29194	AccuTip™-V, Boat Tail	75	243 Win	9	36660 9	36661 6
PRA243WA	29196	AccuTip™	95	243 Win	9	36000 3	36001 0
PRA260RA	29198	AccuTip™, Boat Tail	120	260 Remington	10	36010 2	36011 9
PRA270WA	29200	AccuTip™, Boat Tail	130	270 Win	12	36020 1	36021 8
PRA280RA	29202	AccuTip™, Boat Tail	140	280 Remington	12	38360 6	38361 3
PRA7M08RB	29216	AccuTip™, Boat Tail	140	7mm-08 Remington	11	36330 1	36331 8
PRA7MMRB	29206	AccuTip™, Boat Tail	150	7mm Remington Magnum	14	36030 0	36031 7
PRA3006A	29208	AccuTip™, Boat Tail	150	30-06 Springfield	12	36040 9	36041 6
PRA3006B	29210	AccuTip™, Boat Tail	165	30-06 Springfield	13	36050 8	36051 5
PRA300WC	29212	AccuTip™, Boat Tail	180	300 Win Mag	15	36060 7	36061 4
PRA308WB	29214	AccuTip™, Boat Tail	165	308 Win	11	36070 6	36071 3

MANAGED RECOIL (PACKED 20 ROUNDS PER BOX, 10 BOXES PER CASE, 200 ROUNDS PER CASE)

Index #	Order #	Bullet Style	Bullet Wt. Grains	Cartridge	Avg. Wt. Case	UPC (0 47700) Box No.	UPC (0 47700) Case No.
RL270W2	27616	Core-Lokt.® PSP	115	270 Win	12	36340 0	36314 7
RL7MM4	27658	Core-Lokt.® PSP	140	7mm Remington Magnum	13	36360 8	36361 5
RL30062	27622	Core-Lokt.® PSP	125	30-06 Springfield	12	36350 9	36351 6
RL300W1	27648	Core-Lokt.® PSP	150	300 Win Mag	11	38460 3	38461 0
RL308W1	27672	Core-Lokt.® PSP	125	308 Win	10	36370 7	36371 4

PREMIER GOLD BOX RIMFIRE (PACKED 50 ROUNDS PER BOX, 40 BOXES PER CASE, 2000 ROUNDS PER CASE)

Index #	Order #	Bullet Style	Bullet Wt. Grains	Cartridge	Avg. Wt. Case	UPC (0 47700) Box No.	UPC (0 47700) Brick	UPC (0 47700) Case No.
PR17HM1	28464	AccuTip™-V, Boat Tail	17	17 HMR	19	01080 9	01084 7	01081 6
PR22M1	21184	AccuTip™-V	33	22 Win Mag	24	00840 0	00841 7	00844 5
PR17LR	21164	AccuTip™-V, Boat Tail	17	17 Mach 2 Rimfire	12	48010 7	48011 4	48014 5

COMPETITION/TARGET RIMFIRE (PACKED 50 ROUNDS PER BOX, 100 BOXES PER CASE, 5000 ROUNDS PER CASE)

Index #	Order #	Bullet Style	Bullet Wt. Grains	Cartridge	Avg. Wt. Case	UPC (0 47700) Box No.	UPC (0 47700) Brick	UPC (0 47700) Case No.
RE22T	21252	LRN	40	Rem Eley® 22 LR, Target Rifle	41	00930 8	00931 5	00936 0
RE22CX	21256	LRN	40	Rem Eley® 22 LR, Club Xtra	41	00920 9	00921 6	00926 1
RE22EPS	21259	LFN	40	Rem Eley® Match EPS	41	00980 3	00981 0	00986 5
6122	21022	RN	40	22 Long Rifle, Target	40	00110 4	00111 1	00116 3
† 6100	21284	RN	40	22 Long Rifle, Target	43	00120 3	—	00125 5

RIMFIRE (PACKED 50 ROUNDS PER BOX, 100 BOXES PER CASE, 5000 ROUNDS PER CASE)

Index #	Order #	Bullet Style	Bullet Wt. Grains	Cartridge	Avg. Wt. Case	UPC (0 47700) Box No.	UPC (0 47700) Brick	UPC (0 47700) Case No.
†† R22M1	21170	JHP	40	22 Win Mag	24	00830 1	00831 8	00834 6
†† R22M2	21172	PSP	40	22 Win Mag	24	00820 2	00821 9	00824 7
1022	21000	RN	29	22 Short, High Velocity	29	00010 7	00011 4	00016 6
1522	21006	RN	40	22 Long Rifle, High Velocity	40	00040 4	00041 1	00046 3
† 1500	21276	RN	40	22 Long Rifle, High Velocity	44	00050 3	—	00055 5
1622	21008	HP	36	22 Long Rifle, High Velocity	38	00070 1	00071 8	00076 0
† 1600	21278	HP	36	22 Long Rifle, High Velocity	42	00080 0	—	00085 2
1922	21080	TCSB	36	"VIPER®", 22 Long Rifle, Hyper Velocity	38	00060 2	00061 9	00066 1
1722	21074	TCHP	33	"YELLOW JACKET®", 22 Long Rifle, Hyper Velocity	37	00090 9	00091 6	00096 8
†† 9322	21034	#10 Shot	25	22 Long Rifle, #10 Shot	12	48000 8	—	48001 5
TB-22A	21238	RN	40	"THUNDERBOLT®", 22 Long Rifle, High Speed	40	00250 7	00251 4	00256 6
SUB22HP	21140	HP	38	"SUBSONIC®", 22 Long Rifle, High Speed	39	00520 1	00521 8	00526 0
CY-22HP	21222	HP	36	"CYCLONE®", 22 Long Rifle, High Speed	38	00350 4	00351 1	00356 3
††† GL22HP	21232	HP	36	22 LR, High Velocity	32	00530 0	00531 7	00536 9

RN=Round Nose HP=Hollow Point PSP=Pointed Soft Point TCHP=Truncated Cone Hollow Point TCSB=Truncated Cone Solid Bullet JHP=Jacketed Hollow Point LRN=Lead Round Nose LFN=Lead Flat Nose
 *Packed 50 rounds per box, 10 boxes per case, 500 rounds per case † Packed 100 Rounds Per Box, 50 Boxes Per Case, 5000 Rounds Per Case †† Packed 50 Rounds Per Box, 40 Boxes Per Case, 2000 Rounds Per Case
 ††† Packed 40 Rounds Per Box, 100 Boxes Per Case, 4000 Rounds Per Case