

OLYMPIC CLASS SPORTERS 2006

ANSCHÜTZ[®]
DIE MEISTER MACHER

SPORTING AND
VARMINT RIFLES
WITH THE
UNMISTAKABLE
ANSCHÜTZ
PERFORMANCE

MADE BY ANSCHÜTZ
MADE IN GERMANY
MADE SINCE 150 YEARS



ONLY THE ONE WHO TRIES THE IMPOSSIBLE WILL REACH THE OPTIMUM.
INNOVATIVE, FLEXIBLE, COMPETENT AND DEDICATED TO ACCURACY –
SINCE 1856 WE HAVE MANUFACTURED HIGH QUALITY SPORTING AND VARMINT RIFLES.

PROLOG

THE LINE OF THE FAMOUS ANSCHÜTZ HUNTING, SPORTING, VARMINT AND CUSTOM GRADE RIFLES.

THE FINEST PRECISION SPORTING
ARMS, CRAFTED BY THE DYNASTY OF
SHOOTING EXCELLENCE.

COMPETITIVE SHOOTERS THROUGHOUT
THE WORLD KNOW THAT A SINGLE LINE
OF FIREARMS, CRAFTED AND HONED BY
ONE FAMILY OF RIFLESMITHS FOR
NEARLY A CENTURY AND A HALF, IS THE EMBODIMENT OF SHOOTING
PRECISION AND ACCURACY. THE WORK OF 5 GENERATIONS OF
ANSCHÜTZ FAMILY MEMBERS ALSO MADE IT POSSIBLE THAT
ANSCHÜTZ RIFLES HAVE CAPTURED MORE OF THE WORLD'S
SHOOTING COMPETITIONS THAN ALL OTHER MAKES COMBINED.

THE COMBINATION OF TRADITION AND PROGRESS, RESEARCH AND
DEVELOPMENT AS WELL AS THE CONTINUOUS SEARCH FOR NEW IDEAS
AND INNOVATIONS AND MODERN TECHNOLOGY HAVE CREATED A
HIGH STANDARD PRODUCT RANGE.

THE OUTSTANDING RESULTS OF OUR TARGET RIFLES AT OLYMPIC
GAMES, WORLD AND CONTINENTAL CHAMPIONSHIPS CLEARLY
DEMONSTRATE THE HIGH QUALITY AND DESIGN STANDARDS USED IN
OUR SPORTER RIFLES AND PISTOLS WHICH AGAIN WAS IMPRESSIVELY
PROVED AT THE SUMMER GAMES 2004 IN GREECE.



1856



The son of the gunsmith Johann Heinrich Gottlieb Anschütz, **Julius Gottfried Anschütz** and his wife **Luise Anschütz** founded the company J. G. Anschütz, for the manufacture of Flobert and pocket pistols, Teschings, shotguns and Lancaster Terzerole.



▲ ANSCHÜTZ factory in 1900

1950

A new beginning in Ulm. The company J. G. ANSCHÜTZ GmbH is founded. The company has 7 employees and 20 machines. In the beginning they make air pistols and carry out repair works, then they start to manufacture Flobert and target rifles. Soon the company has 250 employees. The first target shooting successes come in. Then everything goes very fast.

1968



Dieter Anschütz, representing the 4th generation takes over the management of the company and he continues to this day with all his knowledge, competence and personal engagement to lead the company to an even brighter future.

1972

After the overwhelming success of the ANSCHÜTZ Match Rifle the slogan „**ANSCHÜTZ makes Champions**“ („**Die Meistermacher**“) was created and it is still valid.

1992



Jochen Anschütz, representing the 5th generation becomes president of the company and is now leading it together with his father.

2006

ANSCHÜTZ continues to engineer its rifles to higher and higher standards of quality, accuracy and performance for discerning US sportsmen that demand no less. The Olympic performance and accuracy is engineered into every product, from precision target grade barrels, smooth as silk cam cocking bolt, to crisp match triggers, to perfect hand bedding that make ANSCHÜTZ sporting rifles the most accurate in the world.



▲ ANSCHÜTZ factory in 1909



▲ ANSCHÜTZ factory in Ulm, Germany today



CONTENTS



1856



1901



1914



1951



1955



DIE MEISTER MACHER

1984

PROLOG	P. 2
HISTORY	P. 3
CONTENTS	P. 4
MAGAZINES AND ACCESSORIES	P. 5
MODEL 54 MATCH ACTION - 1700 SERIES SPORTERS	P. 6 - 7
MODEL 64 MATCH ACTION - 1416, 1502, 1516, 1517 SERIES SPORTERS	P. 8 - 9
MODEL 64 MATCH ACTION - FOR THE MULTI PURPOSE SERIES	P. 10
MODEL 64 R SPORTER TARGET	P. 11
WHERE TO BUY	P. 12

WARNING:

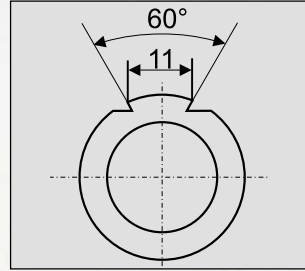
**Do not use this security keyed gun lock on a loaded gun!
Always keep gun unloaded when not in use and have the bolt open.**



3. Security Keyed Gun Lock Protection
All ANSCHÜTZ sporters and pistols are delivered with security keyed gun lock protection to prevent unauthorized use of the firearm.
Item No. 711.7250



- Universal in fit.
- Quick, easy release.
- Made from strong Boron Alloy.
- Rubber gaskets protect gun's metal.
- Easy access with reversible keys.
- Complies with applicable laws.



4. All ANSCHÜTZ Olympic Class Sporters have 11 mm receiver rail and are drilled and tapped for scope mounts to fit B-Square, Bushnell, Ironsighter # 91 front and rear, Leupold, Millett Universal 22 TP series, Redfield 47365, Simmons, Talley, Warne 721, Weaver 91 front and rear.



1. Rubber butt plate 4709 B-U1, convex.
Item No. 710.3710

2. Spacer 4709 P, parallel 8 mm
Item No. 710.3750



3. Sight set 6834, rear sight 6805, front sight 6832, rubber eyeshade and 7 inserts.
Item No. 700.0060



4. Hand stop 6226, with sling swivel.
Item No. 710.3600



5. Target sling 7400S, synthetic, black.
Item No. 710.3017



7. Single shot adapter 4846, for repeaters caliber .22 long rifle.
Item No. 710.4700

8. Magazine 1420-U5, 5-shot, .22 long rifle.
Item No. 700.4005

9. Magazine 1420-U13, 10-shot, .22 long rifle.
Item No. 700.4010

10. Magazine 54.18 MS R-U2 5-shot, for 1808 stock, .22 long rifle.
Item No. 700.4260

11. Magazine 1515-U3, 4-shot, .22 Win. Magnum .17 HMR.
Item No. 700.4304

12. Magazine 1430-U4, 5-shot, .22 Hornet.
Item No. 700.4405

13. Magazine 1530-U4, 3-shot, .222 Remington.
Item No. 700.4503

Magazines 7 8 9 and 10 universal to all ANSCHÜTZ Sporters and Pistols cal. .22 l.r.



MODEL 54 MATCH ACTION

The model 54 Match action is the match winner which is the basis for the 1700 series Sporters. It has dominated national, international, and world championships and Olympic Games for over 40 years.

Each 1700 series Sporter is engineered and built with the same attention to workmanship, accuracy and quality as its Olympic target rifle brethren.

Action:

CNC precision machined from a solid block, with the bolt lugs recesses machined eccentrically within the action for proper bedding.

The bolt face is fully recessed for full cartridge head support. Dual locking lugs with claw extractor and cartridge guide insure positive feeding. The bullet head is guided perfectly into the chamber, just like the ANSCHÜTZ Olympic Biathlon competition rifles.

A unique in line, very light firing pin design gives the ANSCHÜTZ 54 Match action the world's fastest lock time.

Grooved, 11 mm receiver rail is drilled and tapped, and will take most American made rings and bases. American tip off mounts are available from B-Square, Millet, Redfield and Blount.

Safety:

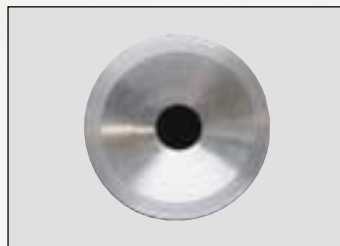
Wing type safety completely encloses the firing pin. When activated, it pulls the firing pin back from the bolt face, positively locking it into a safe position.

Trigger:

Single stage (fully adjustable by professional gunsmiths from 2 to 4.4 lbs.). The same Olympic experience and engineering goes into every trigger. True Match quality, they are manufactured to watch makers tolerances, making ANSCHÜTZ triggers unparalleled by any other rifle for lock time, feel, and crispness. Factory set to 2.2 lbs.

Barrel:

8 groove (for rimfire) or 6 groove (for center fire) Olympic Match ANSCHÜTZ target grade, precision chambered, button rifled and lapped to Olympic competition specifications. Target crowned. A test target is included which attests to each individual rifle's accuracy.



▲ ANSCHÜTZ bevel target crown.

Sights:

Folding rear sight adjustable in height in connection with a sporting ramp front sight with bead adjustable in height with hood (where applicable).

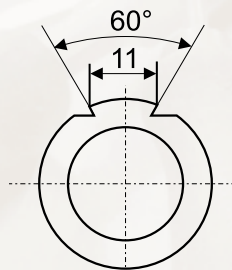
Stocks:

1. Classic

Classic styling and sleek, clean lines make these rifles a pleasure to shoot. Stocks are shaped from select straight-grained European walnut, accented by hand checkering at the pistol grip and forearm with border. Grooved black polymer butt plate and swivel studs.

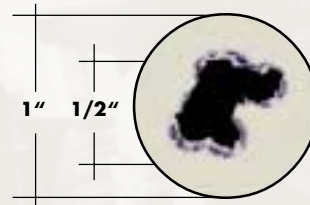
2. Monte Carlo Custom

Unusual grace, beauty and handling blend perfectly with the inherent accuracy of this outstanding rifle. The fine Monte Carlo stock is shaped from European walnut and has a distinctively comfortable, hand-carved roll-over cheek piece for sighting comfort with iron sights or scope. The Wundhammer swell pistol grip is further enhanced by a white lined rosewood grip cap with diamond inlay, and both schnabel fore-end and pistol grip are hand checkered in the pattern. Grooved black polymer butt plate with white spacer and swivel studs.



▲ All ANSCHÜTZ Olympic Class Sporters have 11 mm receiver rail and are drilled and tapped for scope mounts to fit

- B-Square.
- Bushnell.
- Ironsighter # 91 front and rear.
- Leupold.
- Millet Universal 22 TP series.
- Redfield 47365.
- Simmons.
- Talley.
- Warne 721.
- Weaver 91 front and rear.



Typical 1710:
10-shot .22 l.r. test fire group at 55 yards.



Typical 1717:
5-shot .17 HMR test fire group at 55 yards.



Typical 1730:
3-shot .22 Hornet test fire group at 110 yards.



Typical 1702:
5-shot .17 Mach 2 test fire group at 55 yards.

All ANSCHÜTZ firearms are delivered with a security keyed gun lock
Item No. 711.7250
as shown on page 12



54 Match Action with target knob.

MODEL 54 MATCH ACTION - 1700 SERIES SPORTERS

Varmint rifles with the unmistakable ANSCHÜTZ performance



DIE MEISTER MACHER



Model 1712 Silhouette Sporter Monte Carlo



- .22 l.r., 5-shot magazine.
- Eccentrically mounted bolt.
- Dual locking lugs, cam cocking, claw extractor, recessed bolt face for cartridge head support.
- Firing pin lock safety.
- Two stage Match Grade target trigger factory set to 2.2 lbs. with adjustable lop.
- 11 mm grooved receiver, drilled and tapped for scope mounts.
- Match Grade 21.6" barrel, precision rifled, lapped, Match target crowned and free floated.
- Muzzle diameter 0.7".
- Weight 7.3 lbs.



Model 1702 D HB Classic, Heavy Barrel
Model 1710 D HB Classic, Heavy Barrel
Model 1717 D Classic
Model 1717 D HB Classic, Heavy Barrel
Model 1730 D HB Classic, Heavy Barrel



- 23" Match Grade heavy barrel (muzzle diameter 0.83").
- Weight 8 lbs.
- Single stage trigger, Match Grade.
- Classic stock.
- Checkered semi-fancy or Meister Grade walnut.



Model 1710 D KL Monte Carlo
Model 1717 D KL Monte Carlo
Model 1730 D KL Monte Carlo



- 23" barrel (muzzle diameter 0.7").
- With folding rear sight and ramp front sight.
- Weight 7.5 lbs.
- Single stage trigger, Match Grade.
- Monte Carlo roll over cheek piece stock.
- Checkered semi-fancy or Meister Grade walnut.

Model	Item No. Semi-fancy	Item No. Meister Grade	Caliber	Magazine capacity	Length of pull (inch)	Overall length (inch)
1702 D HB Classic w/o sights	242.2095	---	.17 Mach 2	5-shot	14.2	42
1710 D HB Classic w/o sights	220.2095	220.2096	.22 l.r.	5-shot	14.2	42
1717 D Classic w/o sights	222.2091	222.2093	.17 HMR	4-shot	14.2	42
1717 D HB Classic w/o sights	222.2095	222.2096	.17 HMR	4-shot	14.2	42
1730 D HB Classic w/o sights	340.2095	340.2096	.22 Hornet	5-shot	14.2	42
1710 D KL Monte Carlo	220.2030	220.2040	.22 l.r.	5-shot	14.2	42
1712 Silh. Sporter Monte Carlo w/o sights	220.1033	---	.22 l.r.	5-shot	13.8 ± adjustable	40.6
1717 D KL Monte Carlo	222.2030	222.2040	.17 HMR	4-shot	14.2	42
1730 D KL Monte Carlo	340.2030	340.2040	.22 Hornet	5-shot	14.2	42

R = Repeater **D** = Single stage trigger **L** = Left hand version **KL** = Folding leaf sight **HB** = Heavy Barrel **MPR** = Multi Purpose Repeater



MODEL 64 MATCH ACTION

1416/1516/1502/1517

Series Sporters:

The Model 64 Match action is a lighter action than the Model 54, but still retains full ANSCHÜTZ match quality workmanship, accuracy and perfection and is used also for our 1903 target rifles.

64 Match action:

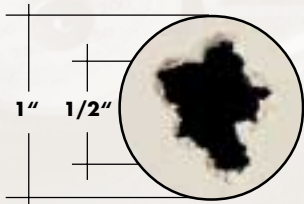
CNC precision machined with cam cocking bolt. The bolt face is fully recessed for full cartridge head support. Target type ball on bolt handle. Claw extractor and cartridge guide ensure positive feeding. The bullet head is guided perfectly into the chamber, just like the ANSCHÜTZ Olympic Biathlon competition rifles. Grooved, 11 mm receiver rail is drilled and tapped, and will take American made rings and bases.

Barrel:

8 groove Olympic Match ANSCHÜTZ target grade, precision chambered, and button rifled to Olympic competition specifications. Target crowned. A test target is included with all Models 64 MPR which attests to individual rifle accuracy.

Trigger:

2.5 lbs. single stage trigger 5094. Fully adjustable by professional gunsmiths from 2 to 4.4 lbs. The trigger is the same as used in the ANSCHÜTZ 1903 target rifle. Factory set to 2.5 lbs.



Safety:

Lateral sliding safety disables the trigger, allowing unloading in the "Safe" position.

Stocks:

1. Classic

Elegant Classic straight lines, shaped from European walnut, checkering at pistol grip and forearm with black polymer butt plate and swivel studs accent the unique appearance.

2. Classic Beavertail

The handsome American Classic line is shaped out of European walnut, combined with a distinctively beautiful Beavertail forend which gives this stock an extraordinary appearance. The exclusive ANSCHÜTZ silken mat finish of this stock and the cut checkering at the pistol grip provides both beauty and protection.

3. Monte Carlo Custom

Monte Carlo walnut stock with Schnabel tipped forearm and modified European style Monte Carlo comb and cheek piece. Pistol grip and forearm are finely checkered, black polymer butt plate with checkering and white spacer and swivel studs.

Sights:

Folding rear sight is adjustable in height as is the hooded sporting ramp front sight.

Typical Target 1416:

10-shot .22 l.r. test fire group at 55 yards.

Typical Target 1502:

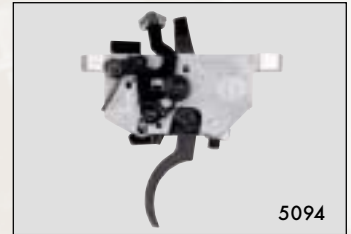
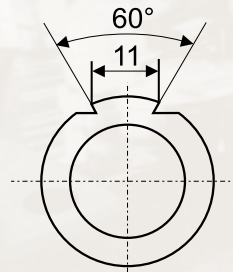
5-shot .17 Mach 2 test fire group at 55 yards.

Typical Target 1516:

5-shot .22 WMR test fire group at 55 yards.

Typical Target 1517:

5-shot .17 HMR test fire group at 55 yards.



All ANSCHÜTZ Olympic Class Sporters have 11 mm receiver rail and are drilled and tapped for scope mounts to fit

- B-Square.
- Bushnell.
- Ironsighter # 91 front and rear.
- Leupold.
- Millett Universal 22 TP series.
- Redfield 47365.
- Simmons.
- Talley.
- Warne 721.
- Weaver 91 front and rear.

All ANSCHÜTZ firearms are delivered with a security keyed gun lock Item No. 711.7250 as shown on page 12

64 Match Action with target knob.

MODEL 64 MATCH ACTION - SPORTERS

Outstanding rimfire rifles, born of world-famous ANSCHÜTZ target rifle technology and crafted for world-class field shooting accuracy.



- Model 1416 D KL Classic**
- Model 1416L D KL Classic**, left hand version
- Model 1502 D HB Classic**, w/o sights
- Model 1516 D KL Classic**
- Model 1517 D Classic**, w/o sights
- Model 1517L D Classic**, w/o sights, left hand version



- 23" barrel.
(muzzle diameter 0.63 in.).
- Adjustable folding rear sight.
- Weight: 5.5 lbs.
- Single stage trigger 2.5 lbs.
- Classic stock, checkered walnut.



- Model 1416 D HB Classic Beavertail**, Heavy Barrel
- Model 1502 D HB Classic Beavertail**, Heavy Barrel
- Model 1517 D HB Classic Beavertail**, Heavy Barrel



- 23" heavy barrel.
(muzzle diameter 0.75 in.).
- Weight: 6.2 lbs.
- Single stage trigger 2.5 lbs.
- Classic Beavertail stock, walnut, checkering at pistol grip.



Model	Item No. Semi-fancy	Item No. Meister Grade	Caliber	Magazine capacity	Length of pull (inch)	Overall length (inch)
1416 D KL Classic	217.2020	---	.22 l.r.	5-shot	14.0	41 1/2
1416L D KL Classic, left hand version	217.3060	---	.22.l.r.	5-shot	14.0	41 1/2
1416 D HB Classic Beavertail, w/o sights	217.4005	---	.22 l.r.	5-shot	14.0	41 1/2
1502 D HB Classic, w/o sights	240.2095	---	.17 Mach 2	5-shot	14.0	41 1/2
1502 D HB Classic Beavertail, w/o sights	240.4005	---	.17 Mach 2	5-shot	14.0	41 1/2
1516 D KL Classic	231.2020	---	.22 WMR	4-shot	14.0	41 1/2
1517 D Classic, w/o sights	221.2023	---	.17 HMR	4-shot	14.0	41 1/2
1517L D Classic, w/o sights	221.3095	---	.17 HMR	4-shot	14.0	41 1/2
1517 D HB Classic Beavertail, w/o sights	221.4005	---	.17 HMR	4-shot	14.0	41 1/2

R = Repeater **D** = Single stage trigger **L** = Left hand version **KL** = Folding leaf sight **HB** = Heavy Barrel **MPR** = Multi Purpose Repeater



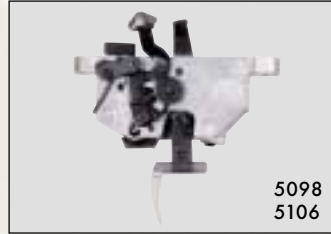
MODEL 64 MATCH ACTION FOR THE MULTI PURPOSE SERIES

These models represent the finest example of a quality moderately priced match rifle. The rifle is built on the fine 64 Match action coupled to a full size target barrel.

The model 64 MP R Multi Purpose is equipped with the two stage Match trigger 5098, factory set to 10 oz.

The model 1517 MP R Multi Purpose is equipped with the two stage Match trigger 5106, factory set to 1 lbs 9 oz.

Both triggers are fully adjustable (by a qualified gunsmith only!) for weight, creep, and length of pull.



Model 64 MP R Multi Purpose
Model 1517 MP R Multi Purpose
shown with accessories!

- 25 1/2" heavy Match barrel diam. 0.89 in.
- Weight: 9 lbs.
- .22 long rifle - 5-shot magazine for .17 HMR - 4-shot magazine.
- Two stage Match Grade target trigger with adjustable lop; for 64 MP R 10 oz. for 1517 MP R 1 lbs 10 oz.
- Beavertail hardwood stock with adjustable butt plate and accessory rail with insert.
- 11 mm grooved receiver rail, drilled and tapped for scopes and target sights.



Adjustable rubber butt plate with 1/3 inch spacer.



Accessory rail with black removable insert.

All ANSCHÜTZ firearms are delivered with a security keyed gun lock Item No. 711.7250 as shown on page 12

Model	Item No.	Caliber	Magazine capacity	Length of pull (inch)	Overall length (inch)
64 MP R Multi Purpose	219.4002	.22 l.r.	5-shot	13.8 + 1/3 spacer	41 1/2
1517 MP R Multi Purpose	221.4102	.17 HMR	4-shot	---	41 1/2

R = Repeater **D** = Single stage trigger **L** = Left hand version **KL** = Folding leaf sight **HB** = Heavy Barrel **MP R** = Multi Purpose Repeater



MODEL 64 R SPORTER TARGET

ANSCHÜTZ Sport and Target Repeater:

64 Match action

Bolt action repeater, with detachable 10-shot magazine. Action is cam cocking with claw extractor and cartridge holder, recessed bolt face for full cartridge head support. Sliding safety.

A great quality moderately priced ANSCHÜTZ medium weight target rifle for intermediate and advanced Junior Match competitions when fitted with

basic target rifle accessories like the ANSCHÜTZ 6834 micrometer sight set, 6226 position hand stop and 4846 single shot magazine block adapter. The target stock fits right and left hand shooters, is vertically and horizontally adjustable at the butt plate, which can be extended with additional 1/3" thick spacers. 2 spacers come with the rifle.



Model 64 R Sporter Target shown with accessories.

The ergonomic pistol grip is stippled. The forearm has an aluminum target rail for target rifle accessories like a hand stop. The 21 1/4" heavy target barrel with 0.87 muzzle diameter is grooved for ANSCHÜTZ target front sight and chambered and rifled to ANSCHÜTZ target barrel specifications. The "ANSCHÜTZ Accurate" 64 R Sporter Target is ready to go right out of the box, you don't need to add other market target barrels, target stocks or rework the trigger.

Trigger:

Two stage Match trigger 5098, factory set to 10 oz.



To convert the rifle for varmint hunting or plinking, just install a scope on the 11 mm grooved receiver.



Accessory rail with black removable insert.

Model	Item No.	Caliber	Magazine capacity	Weight
64 R Sporter Target	219.4500	.22 l.r.	10-shot	7.7 lbs.

Barrel length (inch)	Length of pull (inch)	Sight
21.4	12 1/3 + 2 x 1/3 spacer	optional

ANSCHÜTZ SPORTING RIFLES

ANSCHÜTZ Sporting Rifles are assuredly among the most accurate, if not the most accurate and precisely made small bore firearms in the world! ANSCHÜTZ Sporters are assembled with the same precision rifling, the same bolt assemblies (sporterized in scale), by the same ANSCHÜTZ craftsmen, using the same manufacturing equipment and assembly processes with quality standards as used in the manufacture of the world famous and record setting ANSCHÜTZ Target Rifles. The best small bore shooters in the world have been winning and setting world records with ANSCHÜTZ for the past fifty years.

ANSCHÜTZ firearms and "ANSCHÜTZ ACCURACY" are not for everyone. If you want an adequately accurate rifle that is capable of hitting a tin can size target at 25 to 50 yards you do not need "ANSCHÜTZ ACCURACY." If you are a discriminating shooter and appreciate fine craftsmanship, precise function and demand world class accuracy that will consistently hit dime sized targets at 50 yards or "off hand" silhouettes at 100 yards - you need "ANSCHÜTZ ACCURACY."

ANSCHÜTZ IMPORTED AND SERVICED BY



Merkel USA, Inc.
7661 Commerce Lane
Trussville, AL 35173

205.655.8299
205.655.7078 Fax
www.merkel-usa.com



FIND YOUR DEALER AT WWW.ANSCHUTZ-SPORTERS.COM

ANSCHÜTZ Sporters and Sporting accessories are available through leading firearms dealers. If your local dealer does not inventory the ANSCHÜTZ rifle you are interested in, then find your ANSCHÜTZ dealer through Merkel USA, Inc. or the following Distributors:

AcuSport Corporation - Midwest

Bellefontaine, OH 43311
1-800.543.3150
937.593.3902 Fax

AcuSport - Southeast

Norcross, GA 30092-2202
1-800.543.3150
770.441.7821 Fax

AcuSport - Southwest

Arlington, TX 76006-6182
1-800.543.3150
817.633.4504 Fax

AcuSport - Northeast

Morgantown, PA 19543-9744
1-800.543.3150
610.458.9655 Fax

AcuSport - West

Roseville, CA 95661-4509
1-800.543.3150
916.784.2218 Fax

Ellett Brothers

Chapin, SC 29036
1-800.845.3711
803.345.1820 Fax

AcuSport - Rocky Mountain

Billings, MT 59101-3199
1-800.543.3150
406.248.7767 Fax

AcuSport - Great Lakes

Waite Park, MN 56387
1-800.543.3150
320.252.6511 Fax

Zanders Sporting Goods

Baldwin, IL 62217-9706
1-800.851.4373
618.785.2320 Fax

ANSCHÜTZ TARGET RIFLES ARE AVAILABLE THROUGH

Champion's Choice 800.345.7179; Champion Shooters Supply 800.821.4867;
Gunsmithing Inc. 800.284.8671; Creedmoor Sports 760.757.5529

FACTORY SERVICE, PARTS & REPAIR CENTERS

For Sporters:

Merkel USA, Inc.
7661 Commerce Lane
Trussville, AL 35173
205.655.8299
205.655.7078 Fax
www.merkel-usa.com

For Target Line:

Gunsmithing, Inc.
30 West Buchanan Street
Colorado Springs, CO 80907
719.632.3795
719.632.3493 Fax

For Target Line:

10-Ring Service, Inc.
2227 West Lou Drive
Jacksonville, FL 32216
904.724.7419
904.724.7419 Fax

Note:

Product specifications, design and model changes are subject to change without prior notice. Dimensions and colors are subject to change. With reservation of misprints and errors. Goods are subject to prior sale. **Delivery subject to the presentation of the referring license for the purchase of firearms.** ANSCHÜTZ, the ANSCHÜTZ logo and the ANSCHÜTZ logo in connection with the slogan "Die Meister Macher" (also in modified spelling) are protected and registered trademarks of J.G. ANSCHÜTZ GmbH & Co. KG, Ulm, Germany. The unauthorized use of this brand name is not allowed and punishable. All rights of this catalog reserved. The use of the catalog, also in excerpts, is not allowed without the permission of J.G. ANSCHÜTZ GmbH & Co. KG and otherwise is punishable. This is especially applicable for unauthorized copying, translations and read-ins into electronic systems.

WWW.ANSCHUTZ-SPORTERS.COM · WWW.ANSCHUETZ-SPORT.COM

J.G. ANSCHÜTZ GmbH & Co. KG · P.O. Box 1128 · D-89001 Ulm, Germany · www.anschuetz-sport.com · e-mail: JGA-Info@anschuetz-sport.com

