

ULTIMATE EQUIPMENT PROTECTION FROM THE ELEMENTS.

New Stainless steel ball bearing wheels (on select cases) last longer and ride smoother. The nylon hub adjacent to the stainless steel is made to resist heat. Result: less wear and tear on the polyurethane wheel.

STAINLESS STEEL BALL BEARING WHEELS
NYLON HUB

POLYURETHANE TIRE



New Metal reinforced padlock protectors provide added strength and extra security against cutting and theft.



STRONGER BY DESIGN

The Pelican Protector Case™ uses an open cell core and solid wall construction, which is actually stronger and lighter than a solid core wall. Travel light with heavy protection. And you know it's a Pelican Case™ by the distinctive dual band top surface. Stainless steel pins are used for hinges and handles. The new Double-Throw latches are smarter and easier to open: it's the classic 'C' clamp design with a secondary movement that works like a pry bar to start the release and offers plenty of leverage to open with a light pull.



New Stronger Double-Throw Latch

WATERTIGHT

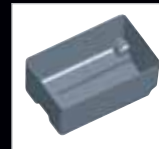
The secret is the tongue-and-groove fit with Polymer sponge o-ring acting as a waterproof seal. Also, the new Automatic Pressure Equalization Valve releases built-up air pressure while keeping water molecules out, resulting in a watertight case that is even easier to open.

Automatic Pressure Equalization Valve releases built-up air pressure while keeping water molecules out, resulting in a watertight case that is even easier to open.



PANEL FRAME MOUNTING SYSTEM

Pelican offers an easy solution for installing interface panels to any Pelican Protector Case™. Our mounting bracket installs beneath your panel and fits against stops molded inside the case walls. With pre-drilled holes and stainless steel screws, fabricating a custom case is faster, stronger, and more accurate.



Receive interior dimensions in any CAD format via email



EXTRA PROTECTION

Pick 'N' Pluck™ foam and versatile padded divider sets are available for cushion

and extra protection. For a better fit, our engineers will map the layout of your equipment for custom foam inserts. Just send the actual equipment or a CAD drawing of the part and we'll die cut the foam insert and install it in a matching case.



CUSTOM LOGOS

Your logo can be applied in multiple colors as a decal or hot stamp, using strict PMS print controls on any Pelican™ case. You'll approve a paper proof or first article prior to the run and, like everything we manufacture, our imprinting is 100% guaranteed.



CASE SPECIFICATIONS AND FEATURES

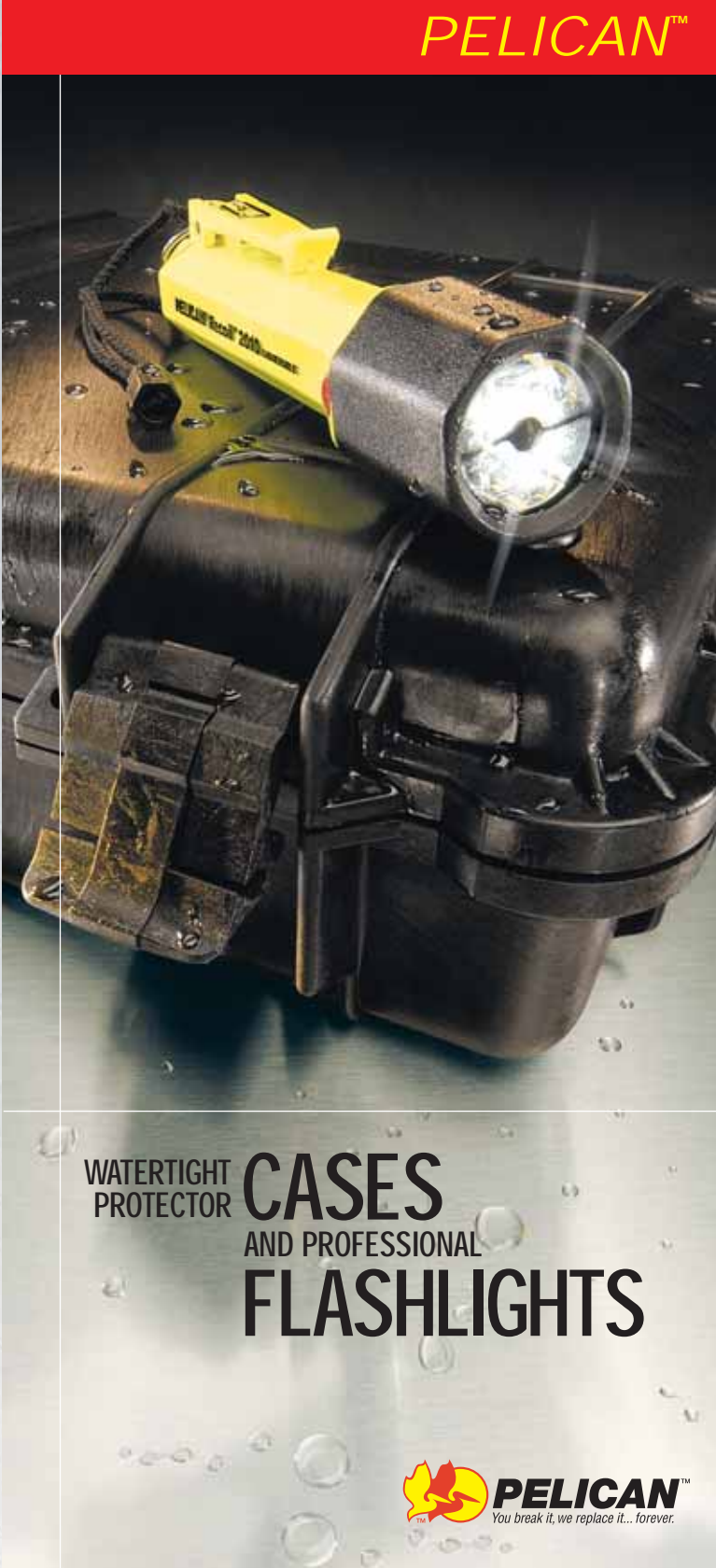
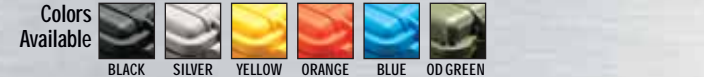
MICRO CASE SERIES	CAT. NO.	INTERIOR DIM. L X W X D	EXTERIOR DIM. L X W X D	FEATURES
	1010	4 1/8" x 2 1/16" x 1 1/8"	5 1/8" x 4 1/8" x 2 1/8"	All Micro Cases are available in solid colors: Black, Blue, Yellow and Red; or clear with colored liners and matching latches.
	1020	5 1/4" x 3 1/2" x 1 1/8"	6 1/8" x 4 3/4" x 2 1/8"	
	1030	6 1/8" x 2 5/8" x 2"	7 1/2" x 3 3/8" x 2 1/8"	
	1040	6 1/8" x 3 13/16" x 1 11/16"	7 1/2" x 5 1/8" x 2 1/8"	
	1050	6 1/8" x 3 3/16" x 2 11/16"	7 1/2" x 5 1/8" x 2 1/8"	
	1060	8 1/16" x 4 1/16" x 2 13/16"	9 1/8" x 5 1/8" x 2 1/8"	

- All cases are watertight
- All cases have Automatic Purge Valves except the 1420 case
- Cases are highly resistant to chemicals
- Pelican Cases meet MIL-STD 4150-J

- PICK 'N' PLUCK™ PADDLED DIVIDERS
- FOLD DOWN HANDLE
- RUBBERIZED HANDLES
- PANEL FRAMES
- MANIPULATOR
- DOUBLE THROW LATCHES
- LID ORGANIZER
- WHEELS

CAT. NO.	INTERIOR DIMENSIONS	EXTERIOR DIMENSIONS	S	S	O																
1120	7 1/8" x 4 1/8" x 3 1/16"	8 1/4" x 6 1/8" x 3 1/8"		S																	
1150	8 1/8" x 5 1/8" x 3 1/16"	9 1/4" x 7 1/8" x 4 1/8"		S																	
1200	9 1/8" x 7 1/8" x 4 1/16"	10 1/8" x 9 1/8" x 4 1/8"		S																	
1300	9 1/8" x 7 1/4" x 6 1/8"	10 5/8" x 9 1/8" x 6 1/8"		S																	
1400	12" x 9 1/16" x 5 1/16"	13 3/8" x 11 1/8" x 6"		S		S															
1420	13" x 5" x 10"	15" x 8 1/2" x 10 1/2"																			
1450	14 1/16" x 10 1/8" x 6"	16" x 13" x 6 1/8"		S		O	S														
1470	15 1/8" x 10 1/8" x 3 1/4"	16 1/8" x 13 1/8" x 4 1/8"		S		S															
1490	17 1/8" x 11 1/2" x 4 1/8"	19 1/8" x 13 3/8" x 4 1/8"		S		S															
1500	17" x 11 1/16" x 6 1/8"	18 1/2" x 14 1/8" x 6 1/8"		S		O	S														
1510	20 1/16" x 11 3/8" x 7 1/2"	22" x 14" x 9"		S		O	S														
1520	17 1/8" x 12 1/4" x 6 1/4"	19 1/8" x 15 1/8" x 7 1/8"		S		O	S														
1550	18 3/8" x 14 3/8" x 7 1/8"	20 3/8" x 16 3/8" x 8 1/8"		S		O	S														
1600	21 1/4" x 16 3/8" x 7 1/8"	24 1/4" x 19 1/8" x 8 1/8"		S		O	S														
1610	22 1/8" x 17 1/8" x 10 1/16"	24 1/8" x 19 1/8" x 11 1/16"		S		O	S														
1620	22 1/8" x 17" x 12 1/16"	24 3/8" x 19 3/8" x 13 1/8"		S		O	S														
1650	29" x 17 1/8" x 10 1/2"	32 1/2" x 20 1/2" x 11 1/16"		S		O	S														
1660	29 3/8" x 20 1/16" x 17 3/8"	31 1/2" x 22 1/8" x 18 1/8"		S		O	S														
0340	18" x 18" x 18"	20 3/8" x 20 1/2" x 19 1/4"		S		O	S														
0350	20" x 20" x 20"	22 1/2" x 22 1/8" x 21 1/4"		S		O	S														
0370	24" x 24" x 24"	24 1/4" x 26 1/2" x 26 1/2"		S		O	S														
1700	35 3/8" x 13 3/16" x 5 1/4"	38 1/8" x 17 13/16" x 6 1/8"																			
1720	42" x 13 3/16" x 5 3/16"	44 3/8" x 16" x 6 1/8"																			
1750	50 1/2" x 13 3/16" x 5 1/4"	53" x 17 1/16" x 6 1/8"																			

GSA# GS-07F-0214J S= STANDARD O= OPTIONAL



WATERTIGHT PROTECTOR CASES AND PROFESSIONAL FLASHLIGHTS



PELICAN™ LIGHTING INSTRUMENTS FOR EXTREME CONDITIONS.



RECOIL LED TECHNOLOGY™ AS BRIGHT AS A CONVENTIONAL LIGHT WITH THE BENEFITS OF LED

Introducing the new Pelican LED Series. The most efficient and durable flashlights in the Pelican line, you'll know it's a Pelican LED by the red marking. Up to 10,000 hours of light - that's more than 11 years of continuous light (and no filament to break). Plus, LEDs consume very low energy, delivering up to 15 times the burn time compared to incandescent bulbs.



Conventional LED

Now Pelican has started a revolution with Recoil™ LED technology. By aiming the bulb backwards, 100% of the light is reflected forward like a handheld lighthouse. The result is a powerful, white collimated beam that's as bright as a conventional flashlight. You can tell it's a Pelican light by its faceted body, and you'll know it's a Pelican LED by the red marking.



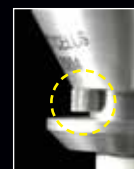
Pelican offers a clean, even pre-focused beam

Other flashlights offer poor and uneven beams with shadows



SAFETY APPROVED FLASHLIGHTS

Pelican™ flashlights have more approvals than any other manufacturer. Innovations such as our polarity battery tray makes operating the flashlight impossible if one or more cells are inverted. Available on select



Gas Absorbing Pellets

models, this feature safeguards against dangerous "outgassing" from an accidentally reversed cell. Another industry first is the addition of Gas-Absorbing Pellets to Pelican™ lamp modules. It is a back-up system that absorbs excess hydrogen retained inside the flashlight. No gas. No spark.



UMBRELLA VALVE

Many Pelican™ lights are watertight (all lights that are submersible are rated at 500 ft) thanks to our o-ringed lens shroud and the new umbrella valve: working like a one-way passage, the valve allows built-up pressure to release while keeping moisture out.



FLASHLIGHT SPECIFICATIONS AND FEATURES

CAT. NO	BATTERIES	TESTED LUMEN VALUE	CANDLE POWER	WATTS	BATTERY BURN TIME	APPROVAL
1900	2 AAA	7	6,000	1.11	2 hrs.	YES
2140	2 AAA	8.0	6,000	1.20	2.5 hrs.	YES
2250	2 AA	7	6,000	1.8	5-6 hrs.	YES
2270	2 AA	8	8,000	1.8	4-5 hrs.	YES
2300	2 AA	8	8,000	1.8	4.2 hrs.	YES
2340	2 AA	8	8,000	1.8	4.2 hrs.	YES
1800	2 C	15.0	10,000	2.22	7.5 hrs.	YES
1820	2 C	15	10,000	2.22	7.5 hrs.	YES
2000	3C	33	12,000	3.33	4-5 hrs.	YES
2400	4 AA	25.0	10,000	3.18	4.0 hrs.	YES
2420	4 AA	31.5	10,000	3.66	3.5 hrs.	YES
2450	Nicad Battery Pack	28.0	10,000	2.64	1.5 hrs.	YES
2430	4 AA Alkaline	31.5	10,000	3.66	3.5 hrs.	Pending
2600	4 AA	25.0	**10,000/6000	*4.5 hrs./3 hrs.	*3 hrs./5 hrs.	YES
2320	2 CR123 Lithium	74.0	20,000	7.8	1 hr.	NO
7050	Nicad Battery Pack	122.0	20,000	7.84	1.25 hr.	YES
8030	3C	25.0	12,000	3.42	5-6 hrs.	YES
8040	4 C	72.0	30,000	4.80	7.7 hrs.	YES
8050	Nicad Battery Pack	151.0	40,000	9.12	1.6 hrs.	YES
8150	4 C Nicad Stick	151	40,000	9.12	1.6 hrs.	N/A
1930	4 LR44 1.5 V	8.9	6,000	0.18	130 hrs.	YES
1990	3 N Alkaline	4.0	N/A	0.675	150 hrs.	YES
2010	3 C Alkaline	32	N/A	1.0	50 + hrs.	Pending
2020	3C	35.0	15,000	1.0	6 hrs.	YES
2130	2 Coin Alkaline	4.7	4,000	0.48	130 hrs.	YES
2220	2 CR2032 3V Lithium	5.5	6,000	0.6	100 + hrs.	YES
2310	1 CR123 Lithium	26	N/A	1.0	2-3 hrs.	NO
2330	2 CR123 Lithium	41.0	17,000	1.0	40.0 hrs.	NO
2370	3 CR123 Lithium	56	N/A	3.0	6.7 hrs.	NO
2410	4AA Alkaline	32.0	N/A	1.0	32 hrs.	Pending
2460	4AA Rechargeable	28.0	N/A	1.0	7 hrs.	Pending
2610	3 AAA	**3.0/9.0	**6,000/20,000	**0.135/0.405	**150 hrs/80 hrs.	YES
2620	3 AAA	**9.0/14.0	**6,000/10,000	**0.405/1.53	**80 hrs./3 hrs.	YES
2630	3 AA Alkaline	***7.0/15/30	N/A	***1/1/1	***24/10/3	Pending
2640	4 AA	**9.0/21.0	**6,000/10,000	**0.54/3.48	**50hrs./3 hrs.	YES
2660	4 D	**9.0/44.0	**6,000/10,000	**0.54/5.76	**400hrs./15 hrs.	YES
2680	4 AA Alkaline	33	N/A	1.0	33 hrs.	Pending
3610	4 AA Alkaline	32.0	N/A	1.0	32 hrs.	Pending
3660	4 AA Rechargeable	28.0	N/A	1.0	7.0 hrs.	Pending
8020	3C	35.0	15,000	1.0	6 hrs.	YES
3600	4 AA	25.0	10,000	3.18	4.0 hrs.	YES
3650	Nicad Battery Pack	28.0	10,000	2.64	1.5 hrs.	YES
3700	4 C	48.0	55,000	7.20	3.5 hrs.	YES
3750	Nicad Battery Pack	72.0	65,000	8.20	2.25 hrs.	YES
3800	6 D	200.0	10,000	8.0	6 hrs.	YES
3850	Nicad/Sealed Lead Acid	610.0	250,000	24.0/11.0	1 hr./ 2 hrs.	YES
4000	8 D	251.4	100,000	14.4	10-12 hrs.	YES
6000	4 D	125.7	60,000	7.0	10-12 hrs.	YES
6050	Nicad Battery Pack	165.0	90,000	9.83	2.0 hrs.	YES
4100	8 D	251.4	100,000	14.4	10-12 hrs.	n/a
4200	4 C	112.0	60,000	6.9	3.5 hrs.	n/a
4300	8 C	276.0	100,000	13.8	3.5 hrs.	n/a

* Primary/Back-up | ** Low/Hi | *** Primary/Hi | **** Low/Medium/Hi
For inquiry on approvals and product colors please go to our website at www.pelican.com.

DISTRIBUTED BY:



Photo by Silverback Limited

PELICAN'S UNCONDITIONAL LIFETIME GUARANTEE OF EXCELLENCE

If for any reason you are not satisfied with the quality or performance of any PELICAN product, we will gladly replace the product or refund your money (at your option) within 30 days of purchase through the original retailer/dealer. PELICAN PRODUCTS will continue to guarantee the product directly for a lifetime against breakage or defects in workmanship. Lifetime guarantee does not cover the lamp, batteries or case contents. The o-rings must be kept greased (and replaced if damaged) per product instructions. This guarantee is void only if the PELICAN product has been abused beyond normal and sensible wear and tear. THE ABOVE GUARANTEE DOES NOT COVER SHARKBITE, BEAR ATTACK OR CHILDREN UNDER 5.

23215 EARLY AVE • TORRANCE, CA 90505
TEL 310-326-4700 • 800-473-5422 • FAX 310-326-3311
WWW.PELICAN.COM

PELICAN PRODUCTS CANADA
10221-184 ST., Edmonton, Alberta T5S 2J4
Tel 780.481.6076 • Fax 780.481.9586



All trademarks and logos displayed herein are registered and unregistered trademarks of Pelican Products, Inc. and others. Xenon is a registered trademark of General Electric Company.
Part # 1203-315-000 ©2005 Pelican Products JA/05

THE PELICAN UNCONDITIONAL LIFETIME GUARANTEE

PERSONAL LIGHTS

- 1900 MityLite™ 2AAA
- 2140 Tracker™
- 2250 VersaBrite™
- 2270 VersaBrite™ II
- 2300 MityLite™ 2AA
- 2340 MityLite™ Plus 2AA
- 1800 Super Pellite™
- 1820 Pocket SabreLite™ 2C
- 2000 Super SabreLite™
- 2400 StealthLite™
- 2450 StealthLite™ Rechargeable
- 2420 MityLite™ 4AA
- 2430 MityLite™ Plus 2AA
- 2600 HeadsUp Lite™

MEDIUM DUTY LIGHTS

- 8030 M8 3C
- 8040 M10 4C
- 8050 M11 Rechargeable
- 8150 M12 Aluminum Rechargeable
- 1930 L1 LED
- 1990 MityLite™ 3N LED
- 2010 Recoil 2010
- 2020 SabreLite™ LED
- 2130 Mini Flasher™
- 2220 VB3™ LED
- 2310 M1 LED
- 2330 M6 LED
- 2370 M3 LED
- 2410 Recoil 2410
- 2460 Recoil 2460

LIGHT KITS

- 1950 Mini System
- 1980 Knife/Lite Combo
- 1940 L1 LED Knife/Lite Combo
- 1945 L1 LED Light and Attachment System

BLACK KNIGHT SERIES™

- 2320 M6 Lithium
- 7050 M9 Rechargeable

BLACK KNIGHT SERIES™

- 2610 HeadsUP Lite™
- 2620 HeadsUP Lite™
- 2630 HeadsUP Lite™

LED AND RECOIL™ SERIES

- 3610 LittleEd™ Recoil
- 3660 LittleEd™ Recoil Rechargeable
- 8020 M8 LED

LED AND RECOIL™ SERIES

- 3650 Little Ed™ Alkaline 4AA
- 3650 Little Ed™ Rechargeable
- 3700 Big Ed™ Alkaline 4C
- 3750 Big Ed™ Rechargeable
- 3800 Big D™ Alkaline 6D
- 3850 Big D™ Rechargeable System

HEAVY DUTY LIGHTS

- 4000 King Pelican Lite™ 8D
- 6000 LaserPro™ 4D
- 6050 LaserPro™ Rechargeable System

PRIMARY DIVE LIGHTS

- 4100 AquaKing Lite™ 8D
- 4200 Nemo™ 4C
- 4300 Nemo™ 8C

Submersible

Rechargeable