

ARMALITE

THE .308 COMPANY

ARMALITE® CATALOG #9

A Note from the President . . .

ArmaLite® has made so many improvements and adjustments to its M15™ and AR-10® rifles that we're taking a page from the automotive industry by declaring a model year: **The 2003 ArmaLites®**. Most of the features of the 2003 ArmaLites® can't be seen. They're multiple, subtle features and changes that add up to fine tuning of the rifles.

We've taken this unusual move because of recent urgent shipments of AR-10®s to U.S. and Allied forces and their immediate departure for service in Afghanistan. Orders and deliveries were made so quickly that the governments involved had time to conduct only initial performance testing. Technical testing had to wait.

At ArmaLite®, we haven't been content with waiting. We've initiated an extensive series of laboratory and performance tests intended to fine tune all of our rifles to suit the current ammunition and tactics with which our rifles are employed. We've conducted high-speed film tests, time/displacement studies, endurance firing, and interchange tests, and are still at work.

All of this testing is intended to assure that our rifles meet rugged military requirements. And if they're tough enough for the military, we know they'll serve the commercial market with even more distinction than you've already come to expect from an ArmaLite®.



Mark A. Westrom, President



ArmaLite® Inc.

P.O. Box 299 / Geneseo, IL 61254

ORDERS/INFORMATION:

Hours: 8:00-4:30 CST Monday thru Friday

Orders: 1-800-336-0184 / Phone: 309-944-6939 / Fax: 309-944-6949

Website: www.armalite.com / E-mail: info@armalite.com

MILITARY & POLICE SALES

P.O. Box 340, Campbellsburg, KY 40011

Phone: 502-532-0300 / Fax: 502-532-0775 / E-mail: toppc@armalite.com

ARMALITE® – A HISTORY OF INNOVATION

Multiple Product Lines . . .

ArmaLite® offers the most complete product line in the business. Each of our powerful .308 caliber AR-10® rifles is matched by a compact 16 inch carbine version -- and each AR-10® rifle and carbine is matched by a twin .223 caliber from the M15™ line. Within each of these families, ArmaLite® offers super accurate T models, flexible A4 flattop models and rugged tactical A2 models. In addition to our famed AR-10® and M15™ lines, we're also producing the innovative AR-50™ and AR-30™ bolt action rifles. Only ArmaLite® offers such a broad, balanced product line.

All American Made . . .

The ArmaLite® name provides assurance that you're buying both quality and innovation. Every component of our rifles, carbines and genuine ArmaLite® parts lineup has been reviewed and improved, down to individual pins and springs -- and every component is U.S. made, with no imported surplus parts like many of the "bilingual" (rifles made of mixed U.S. and foreign parts) FAL or G-3 type rifles on the market today.

All Backed By The Best Warranty . . .

Our commitment to quality and technical excellence throughout the production process is backed up by a limited lifetime warranty on each of our AR-10®s and M15™s -- the best warranty in the business!

CATALOG INDEX

ArmaLite® Specialty Rifles 4 – 9

AR-50™ .50 Caliber	4 - 5
AR-30M™ .300/.308/.338 Caliber	6 - 7
AR-180B™ .223 Caliber	8
AR-10B™ .308 Caliber	9

ArmaLite® AR-10® Series .308 Caliber Rifles & Carbines 10 – 15

ArmaLite® M15™ Series .223 Caliber Rifles & Carbines 16 – 24

ArmaLite® AR-10® Parts 25 – 28

ArmaLite® M15™ Parts 29 – 38

ArmaLite® AR-10® / M15™ Standard Features / Options Charts 40 – 41

Optics & Optical Accessories 43 – 48

Range & Field Gear 49 – 57

Cleaning & Gunsmithing 58 – 63

Reloading Tools & Supplies 64 – 65

Books & Manuals 66 – 67

ArmaLite® Logo Gear & Gifts 68 – 69

Ordering Information & Mail/Fax Order Form 70 – 71



ArmaLite's Heavyweight:

AR50™ Muzzle Brake Assembly

Massive, distinctive and only truly appreciated when you pull the trigger and feel the mild shove of .243-like recoil. The most efficient .50 caliber muzzle brake on the market! Includes deflector and locknut.

- 1/14 Thread AR50000-1 **\$178.00**
 1/12 Thread EX0550 **\$243.00**



AR50™ Parts

AR-50™ Action Group

Includes trigger, bolt, receiver and recoil lug.

- AR50004 **\$960.00**

AR-50™ Barreled Action Group

Includes barrel, trigger, bolt, receiver and recoil lug.

- AR50001 **\$1,750.00**

Extractor AR50018 **\$21.00**

Extractor pin AR50124 **\$1.00**

Extractor spring EB0110 **\$.75**

AR-50™ Stock Group Complete

Complete AR-50™ stock group, includes pre-assembled, non-duplicated set of each of the kits below.

- AR50003 **\$360.00**

AR-50™ Buttstock Kit . . . AR50027KIT **\$175.00**

Includes buttstock, recoil pad, adjustable butt plate, 2 recoil pad screws, 2 butt plate screws, 2 washers, 2 forestock/buttstock screws.

AR-50™ Forestock Kit . . . AR50035KIT **\$165.00**

Includes forestock, 2 action screws, 2 washers, forestock bedding wedge, bedding wedge screw, 2 forestock/buttstock screws, grip frame screw.

AR-50™ Grip Frame Kit . . . AR50025KIT **\$40.00**

Includes pistol grip, pistol grip screw, pistol grip screw washer, grip frame, grip frame screw.

AR-50™ Cheek Piece Kit AR50029KIT **\$45.00**

Includes cheek piece, cheek pad, protective strip, 2 cheek piece nuts, 2 cheek piece screws.

AR-50™ Butt Plate Kit . . . AR50042KIT **\$45.00**

Includes recoil pad, adjustable butt plate, 2 recoil pad screws, 2 butt plate screws, washer.

AR50™ Scope Base



Steel picatinny sight rail attachment

- 15 Minute 600 to 1000 yds. . . AR500361 **\$80.00**

- 50 Minute 1000 to 1800 yds. . . AR500365 **\$80.00**

AR-50™

.50 CALIBER

The AR-50™ is intended to provide an economical, accurate rifle for shooters interested in the challenges of long range shooting. It features outstanding accuracy based on the V-block mounting of the stock. It's a machine rest shaped like a stock!

This innovative, single shot bolt action rifle bears a unique octagonal receiver bedded into an aluminum stock. It is equipped with a modified M16 type vertical pistol grip and removable buttstock for ease of transport.

With owners manual and Limited Lifetime Warranty.

AR-50™ Rifle 50B **\$2,745**

AR-50™ - Left-handed model . . . 50BLB **\$2,745**

Shown with optional scope, scope mount, scope base, bipod adapter and bipod.

Scope Mount One Piece



Works with up to a 50mm bell or larger when used on the AR-50™. Outstanding, repeatable engagement on MILSTD 1913 (picatinny) rail.

- 1 inch. EX0027 **\$89.00**

- 30mm. EX0022 **\$89.00**

Scope Mount Two Piece



Provides repeatable engagement on MILSTD 1913 (picatinny) rail.

- 1 inch. EX0029 **\$89.00**

- 30mm. EX0024 **\$89.00**



.50 Caliber & 33.2 Pounds!



The ArmaLite® AR-50™

- CALIBER** • .50 BMG
- LENGTH** • 59.5 INCHES / **WEIGHT** • 33.2 LBS
- BARREL** • 31" CHROME MOLY, 8 GROOVE, RH 1:15 INCH TWIST
- RECOIL CHECK** • HIGHLY EFFICIENT MULTI-FLUTE, RECOIL VERY MODERATE
- RECEIVER** • MODIFIED OCTAGONAL FORM, DRILLED & SLOTTED FOR SCOPE RAIL
- BOLT** • TRIPLE FRONT LOCKING LUG / **EXTRACTOR** • SAKO TYPE
- EJECTOR** • SPRING LOADED PLUNGER, AUTOMATIC EJECTION
- TRIGGER** • SCHILLEN STANDARD SINGLE STAGE, APPROXIMATE 5 POUND PULL
- FINISH** • MANGANESE PHOSPHATED STEEL, HARD ANODIZED ALUMINUM
- SCOPE RAIL** • MIL STANDARD WITH BOSS TO ENGAGE CROSS-SLOT ON RECEIVER
- STOCK** • 3 SECTION: EXTRUDED FOREND, MACHINED GRIP FRAME WITH VERTICAL GRIP, FORGED AND MACHINED REMOVABLE BUTTSTOCK
- BUTTPATE** • VERTICALLY ADJUSTABLE, SPECIALLY BUILT FOR HEAVY CALIBERS

Great accuracy at an outstanding price!

AR50™ Rifle Case



At last! A carry case 62" long and 13 1/2" wide, big enough for your AR-50™ with scope! Opens wide for use as a shooting mat, with loops for cartridges and a special muzzle brake cozy to protect that ArmaLite® brake. Carry handles on the ends, as well as the middle so your best friend can help you carry your AR-50™ to the range.

- Black HWC 62 BLK **\$165.00**
- OD Green HWC 62 OD **\$165.00**

Pro-Shot .50 Caliber Cleaning Kit

Custom .50 caliber cleaning kit includes cleaning rod, solvent, patches, brushes and jag.
CP0500 **\$42.00**



Prince Monopod

6.25" screwed in,
11.5" extended.
EX3202 **\$100.00**

Prince Bipod

11" folded
9.75" set up.
EX3200 **\$200.00**

Harris Ultralight Bipod

SERIES S - HINGED BASE - BR
Bench Rest - 6-9" Leg Height
LAW2030 **\$99.00**



AR50™ Bipod Adapter

AR50120 **\$28.00**





AR-30M™

.300/.308/.338 CAL.

Our most precise mid-caliber rifle!

The new AR-30M™ is similar in design to the innovative ArmaLite® AR-50™. With its fixed machine rest shaped stock and unique octagonal receiver, the AR-30M™ is ArmaLite®'s most precise mid-caliber rifle.

Available in three calibers – the .300 Win Mag, .308/7.62mm and the .338 Lapua – the AR-30M™ is equipped with a triple lapped match grade barrel and 5 round magazine for fast changes during matches.



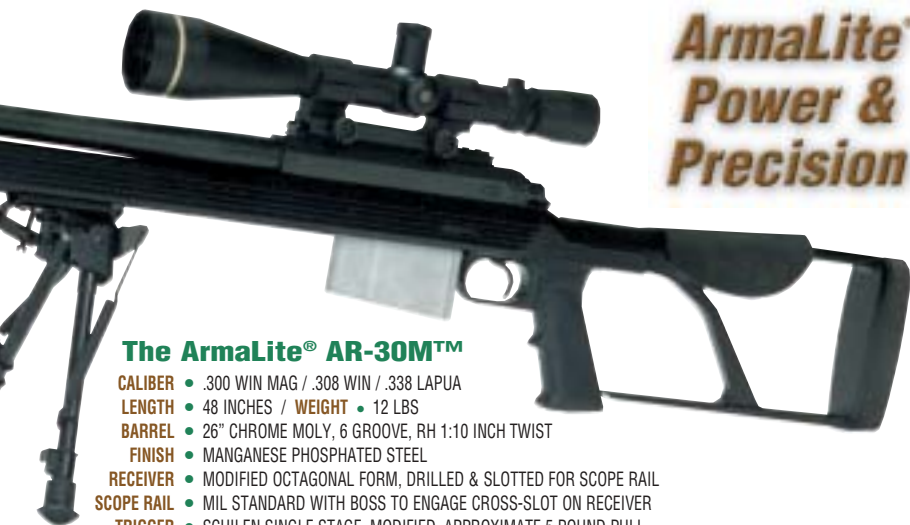
Comes with one 5 round magazine, owners manual and Limited Lifetime Warranty.

- AR-30M™ Rifle** - .300 Win Mag - Muzzle Brake optional 30M300 **\$1,372**
- AR-30M™ Rifle** - .308 Win - Muzzle Brake optional 30M308 **\$1,372**
- AR-30M™ Rifle** - .338 Lapua - with Muzzle Brake 30M338 **\$1,585**

Scope, scope mount, scope base, bipod adapter and bipod sold separately.



ArmaLite® Power & Precision



The ArmaLite® AR-30M™

- CALIBER** • .300 WIN MAG / .308 WIN / .338 LAPUA
- LENGTH** • 48 INCHES / **WEIGHT** • 12 LBS
- BARREL** • 26" CHROME MOLY, 6 GROOVE, RH 1:10 INCH TWIST
- FINISH** • MANGANESE PHOSPHATED STEEL
- RECEIVER** • MODIFIED OCTAGONAL FORM, DRILLED & SLOTTED FOR SCOPE RAIL
- SCOPE RAIL** • MIL STANDARD WITH BOSS TO ENGAGE CROSS-SLOT ON RECEIVER
- TRIGGER** • SCHILLEN SINGLE STAGE, MODIFIED, APPROXIMATE 5 POUND PULL
- BOLT** • DUAL FRONT LOCKING LUG
- STOCK** • 3 SECTION: EXTRUDED FOREND, MACHINED GRIP FRAME WITH VERTICAL GRIP, FORGED AND MACHINED REMOVABLE BUTTSTOCK
- BUTTPLATE** • VERTICALLY ADJUSTABLE, SPECIALLY BUILT FOR HEAVY CALIBERS

AR30™ Five Round Magazine

30601005338 \$60.00

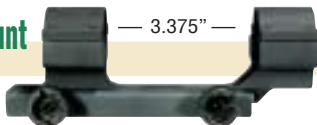
AR30™ Scope Rail



Steel picatinny sight rail attachment

15 Minute 30910000KIT \$70.00

Scope Mount One Piece



Works with up to a 50mm bell with outstanding, repeatable engagement on MILSTD 1913 (picatinny) rail.

1 inch EX0027 \$89.00

30mm EX0022 \$89.00

Scope Mount Two Piece



Works with up to a 50mm bell with repeatable engagement on MILSTD 1913 (picatinny) rail.

1 inch EX0029 \$89.00

30mm EX0024 \$89.00



*Add a Bagmaster
48" Heavy Weapons Case*

Page 57 - EX1800 \$110.00

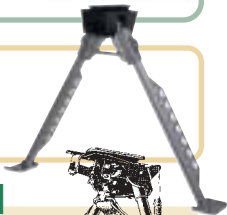
AR30™ Muzzle Brake Assembly

Machined, not cast.
30130000 \$165.00



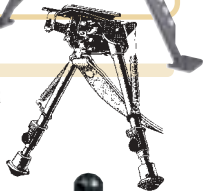
Prince Bipod

11" folded, 9.75" set up.
EX3200 \$200.00



Harris Ultralight Bipod

SERIES S - HINGED BASE - BR
Bench Rest - 6-9" Leg Height
LAW2030 \$99.00



AR30™ Bipod Adapter

AR50120 \$28.00





THE RETURN OF A CLASSIC



AR-180B™

.223 CALIBER

With the best features of the .223 caliber M15™ and the 1st Gen AR-180™ rifles . . .

The lower on our new AR-180B™ is made of a high strength polymer, and features the trigger group and magazine well of the AR15®, so it uses standard AR15® type mags and repair parts are readily available.

The upper is formed sheet metal like the 1st Gen AR-180™ and features the AR-180™ gas system to keep operating gasses outside the receiver. The chrome moly barrel features an integral muzzle brake and our exclusive adjustable front sight base.

The new AR-180B™'s upper and lower receiver groups are interchangeable with those of the 1st Gen AR-180™, so earlier models may now be repaired by replacing the upper or lower half.

AR15® is a registered Trademark of Colt®



AR-180B™ Scope Mount and Outreach 4x30mm Scope

18900001KIT **\$124.00**

- CALIBER** • .223/5.56MM, NATO CHAMBER
- LENGTH** • 38 INCHES **WEIGHT** • 6 LBS
- BARREL** • 19.8" WITH INTEGRAL MUZZLE BRAKE,
CHROME MOLY, RH 1:9 INCH TWIST

- UPPER RECEIVER** • FORMED SHEET METAL
- LOWER RECEIVER** • HIGH STRENGTH POLYMER

- TRIGGER** • STANDARD M15 TRIGGER GROUP
- MAGAZINE** • STANDARD M15 MAGAZINE
- SIGHTS** • REAR SIGHT ADJUSTABLE FOR WINDAGE,
SMALL AND LARGE APERTURES



*Comes with 10 round magazine,
owners manual and One Year Warranty.*

AR-180B™ Rifle 180B **\$650**

AR-180B™ - Match Trigger . . . 180BN **\$750**

AR-180B™ Top End 18001000 **\$500.00**

AR-180B™ Handguard Set EX1541 **\$26.00**

Scope mount and
scope sold separately.

The ArmaLite® AR-10B™

- CALIBER** • .308/7.62MM
- LENGTH** • 41 INCHES
- WEIGHT** • 9.4 LBS
- BARREL** • 20" CHROME LINED MEDIUM, RH 1:10 INCH TWIST
- MUZZLE DEVICE** • MULTI-SLOT RECOIL CHECK
- UPPER RECEIVER** • FORGED AIRCRAFT ALLOY
- TRIGGER** • SINGLE STAGE, TWO STAGE MATCH OPTIONAL
- BOLT** • SIX LUG
- EJECTOR** • SPRING LOADED PLUNGER, AUTOMATIC EJECTION
- FRONT SIGHT BASE** • M16 STYLE
- FINISH** • MANGANESE PHOSPHATED STEEL, HARD ANODIZED ALUMINUM
- FURNITURE** • BROWN, SUDANESE STYLE



AR-10B™

.308 CALIBER

The Legend Returns!

The AR-10B™ represents ArmaLite®'s return to some of the early features that captured the imagination of millions.

The AR-10B™ features the unique charging handle in the carry handle of the first AR-10®s, brown Sudanese style furniture, elevation scale window, and the famed ArmaLite® Pegasus logo.

The .308 caliber AR-10B™ is the perfect rifle for those collectors who could only wish for an ArmaLite® in it's early days.



*Free with each AR-10B™:
An exclusive Legend Toaster
with the Pegasus logo!*

Shown with converted 20 round M14 magazine.
The AR-10B™ cannot be scoped.



*Comes with two 10 round magazines,
owners manual, Lifetime Warranty . . .
and your very own Legend Toaster!*

AR-10B™ Rifle 10B **\$1,635**
AR-10B™ - Match Trigger 10BN **\$1,735**

The AR-10B™ is available with or without recoil check.



AR-10(T)TM .308 CALIBER

Our Top-of-the-Line Rifle!

The AR-10(T)TM offers outstanding accuracy and reliability for both competition and tactical use.

The triple-lapped stainless steel barrel floats within a rugged fiberglass hand-guard. The Mil Standard sight base (picatinny rail) on the upper receiver and the gas block allow rapid and repeatable interchange of removable iron or scope sights.

The AR-10(T)TM features our famed machined, tool-steel two-stage National Match trigger group.



Shown with optional scope, scope mount and converted 20 round M14 mag



Comes with two 10 round magazines, owners manual and Lifetime Warranty.

AR-10(T)TM Rifle - Green, SST Barrel, Match Trigger 10TN \$2,080

AR-10(T)TM Rifle - Black, SST Barrel, Match Trigger 10TBN \$2,080



**Add
Trijicon's New
Tri-Power Optical Sight**

Page 45 - LAW1143 . \$450.00

AR-10(T)TM **CARBINE** **.308 CALIBER**

The Navy Model

The same quality as the AR-10(T)TM with a compact 16 inch long barrel for convenient carry or close-in maneuverability for military or law enforcement personnel.

This carbine comes equipped with ArmaLite®'s very effective recoil check and ArmaLite®'s exclusive intermediate-length carbine handguards for improved function and great grip.

Shown with optional
optical sight and converted
20 round M14 magazine



*Comes with two 10 round magazines,
owners manual and Lifetime Warranty.*

AR-10(T)TM Carbine - Green, SST Barrel, Match Trigger 10TCN **\$2,080**

AR-10(T)TM Carbine - Black, SST Barrel, Match Trigger. 10TCBN **\$2,080**

The AR-10(T)TM Carbine is available with or without recoil check.



AR-10A4™

.308 CALIBER

SPR® (Special Purpose Rifle™)

Combining the tactical build of the AR-10A2™ with the MIL STD 1913 (picatinny rail) receiver and gas block of the AR-10(T)™, the AR-10A4™ provides the tactical flexibility of removable conventional sights with ArmaLite®'s sturdy telescopic sight mounts.

The barrel starts life as a double-lapped match barrel, and is then chrome lined to retain better accuracy than previous tactical rifles while providing the corrosion resistance of chrome lining. At home on the range or in the field, the AR-10A4™ is a serious rifle for tactical or sport purposes.



Comes with two 10 round magazines, sling, owners manual and Lifetime Warranty.

Shown with optional scope, scope mount and converted 20 round M14 mag

- AR-10A4™ Rifle** - Green, Chrome Lined Barrel 10A4 **\$1,383**
- AR-10A4™ Rifle** - Black, Chrome Lined Barrel 10A4B **\$1,383**
- AR-10A4™ Rifle** - Green, Chrome Lined Barrel, Match Trigger 10A4N **\$1,483**
- AR-10A4™ Rifle** - Black, Chrome Lined Barrel, Match Trigger 10A4BN **\$1,483**
- AR-10A4™ Rifle** - Green, Stainless Steel Barrel, Match Trigger 10A4SN **\$1,583**
- AR-10A4™ Rifle** - Black, Stainless Steel Barrel, Match Trigger 10A4BSN **\$1,583**
- AR-10A4™ Rifle** - Green, Stainless Steel Barrel 10A4S **\$1,483**

AR-10A4™ Rifle - Black, Stainless Steel Barrel ArmaLite®'s SPR® in it's counter-sniper mode: the triple-lapped stainless steel match barrel makes this an extremely accurate and effective Police rifle. The stainless barrel can easily be bead blasted to provide a dull, non-glare finish..... 10A4BS **\$1,483**

The AR-10A4™ is available with or without recoil check.

All models available in Realtree Hardwoods® or Advantage Classic® Camo Finish for an additional \$150.



AR-10A4™ CARBINE .308 CALIBER

The AR-10A4™ Carbine offers the same sighting choices as the AR-10A4™ SPR® in this handy compact format. Hard hitting, rugged, and at home on the range or in the field.

All our AR-10A4™ and AR-10(T)™ rifles feature our clamping gas block, allowing the removable front sight to be rotated to zero the front sight. This assures that the rear sight is centered and full left and right windage movement is available when shooting in strong winds.



Shown with optional optical sight and converted 20 round M14 magazine

Comes with two 10 round magazines, sling, owners manual and Lifetime Warranty.

- AR-10A4™ Carbine** - Green, Chrome Lined Barrel 10A4C **\$1,383**
- AR-10A4™ Carbine** - Black, Chrome Lined Barrel. 10A4CB **\$1,383**
- AR-10A4™ Carbine** - Green, Chrome Lined Barrel, Match Trigger 10A4CN **\$1,483**
- AR-10A4™ Carbine** - Black, Chrome Lined Barrel, Match Trigger 10A4CBN **\$1,483**

The AR-10A4™ Carbine is available with or without recoil check.

All models available in Realtree Hardwoods® or Advantage Classic® Camo Finish for an additional \$150.



**Add a Buttstock
Cleaning Kit**

Page 60 - EX3233 . . \$21.50



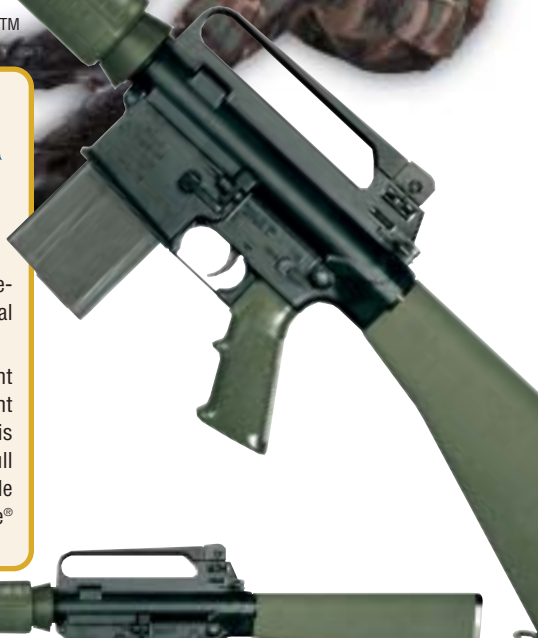


AR-10A2™ .308 CALIBER The Infantry Model

The 7.62mm equivalent of the famed M16A2 (semi-automatic only).

The AR-10A2™ uses the same 20" double-lapped heavy barrel as the AR-10A4™ Special Purpose Rifle® for peak accuracy.

The AR-10A2™ features our clamping front sight base, allowing the removable front sight to be rotated to zero the front sight. This assures that the rear sight is centered and full left and right windage movement is available when shooting in strong winds. An ArmaLite® exclusive!



Comes with two 10 round magazines, sling, owners manual and Lifetime Warranty.

Shown with converted 20 round M14 magazine

- AR-10A2™ Rifle** - Green, Chrome Lined Barrel 10A2 **\$1,435**
- AR-10A2™ Rifle** - Black, Chrome Lined Barrel 10A2B **\$1,435**
- AR-10A2™ Rifle** - Green, Chrome Lined Barrel, Match Trigger 10A2N **\$1,535**
- AR-10A2™ Rifle** - Black, Chrome Lined Barrel, Match Trigger 10A2BN **\$1,535**
- AR-10A2™ Rifle** - Green, Stainless Steel Barrel 10A2S **\$1,535**
- AR-10A2™ Rifle** - Black, Stainless Steel Barrel 10A2BS **\$1,535**
- AR-10A2™ Rifle** - Green, Stainless Steel Barrel, Match Trigger 10A2SN **\$1,635**
- AR-10A2™ Rifle** - Black, Stainless Steel Barrel, Match Trigger 10A2BSN **\$1,635**

The AR-10A2™ is available with or without recoil check.

All models available in Realtree Hardwoods® or Advantage Classic® Camo Finish for an additional \$150.



AR-10A2™ CARBINE .308 CALIBER

The AR-10A2™ Carbine is the compact companion to the Infantry Model, with the convenient 16 inch long barrel. The handy Intermediate length handguards provide much more flexibility in hand position than the short handguards used by competing brands.

Our carbines are the most balanced, attractive 16 inch carbines on the market. No long skinny looking barrels!

Add an
A.R.M.S. Inc.
#2 Carry Handle Mount
Page 48 - EX1351 \$64.95



Shown with converted
20 round M14 magazine

*Comes with two 10 round magazines,
sling, owners manual and Lifetime Warranty.*

- AR-10A2™ Carbine** - Green, Chrome Lined Barrel 10A2C **\$1,435**
- AR-10A2™ Carbine** - Black, Chrome Lined Barrel. 10A2CB **\$1,435**
- AR-10A2™ Carbine** - Green, Chrome Lined Barrel, Match Trigger 10A2CN **\$1,535**
- AR-10A2™ Carbine** - Black, Chrome Lined Barrel, Match Trigger 10A2CBN **\$1,535**

The AR-10A2™ Carbine is available with or without recoil check.

All models available in Realtree Hardwoods® or Advantage Classic® Camo Finish for an additional \$150.



Add a Detachable Carry Handle Assembly
 Page 38 - E20149 \$97.00

Add a Detachable Front Sight Assembly
 Page 38
 E20151 . \$50.00



M15A4(T)TM

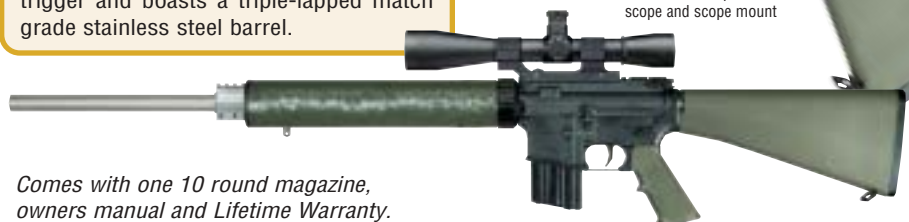
.223 CALIBER
Our Top-of-the-Line .223!

The M15A4(T)TM features the same configuration as the famed AR-10(T)TM .308, but in the accurate, light recoiling smaller .223 caliber. This quality engineered rifle makes a great target or varmint rifle.

The M15A4(T)TM comes equipped with ArmaLite®'s National Match two-stage trigger and boasts a triple-lapped match grade stainless steel barrel.



Shown with optional scope and scope mount



Comes with one 10 round magazine, owners manual and Lifetime Warranty.

M15A4(T)TM Rifle - Green, SST Barrel, Match Trigger 15A4TN **\$1,383**
M15A4(T)TM Rifle - Black, SST Barrel, Match Trigger 15A4TBN **\$1,383**



M15A4(T)[™] CARBINE .223 CALIBER

ArmaLite®'s lightest and fastest T model, the M15A4(T)[™] provides compact accuracy and flexibility, featuring ArmaLite®'s National Match two-stage trigger, picatinny rail front sight base and free-floating triple-lapped match barrel.

Incidentally, the fiberglass handguard of all T models is reusable on other rifles, or after rebarreling, unlike the simple, less expensive aluminum tubes used by others.



Shown with optional scope and scope mount



Comes with one 10 round magazine, owners manual and Lifetime Warranty.

M15A4(T)[™] Carbine - Green, SST Barrel, Match Trigger 15A4TCN **\$1,383**

M15A4(T)[™] Carbine - Black, SST Barrel, Match Trigger 15A4TCBN **\$1,383**

The M15A4(T)[™] Carbine is available with or without recoil check.



Add optional Realtree Hardwoods® Camo Finish \$150

M15A4™

**.223 CALIBER
SPR® (Special Purpose Rifle™)**

The M15A4™ offers the flexibility of the Picatinny rail applied to a standard grade .223 caliber rifle. Light recoiling and accurate, this is a fine, flexible rifle for Law Enforcement.

All of ArmaLite®'s flat-top models accept ArmaLite®'s removable front sights and carry handles, and other devices conforming to MIL STD 1913 (picatinny rail).

Shown with optional scope and scope mount



Comes with one 10 round magazine, sling, owners manual and Lifetime Warranty.

- M15A4™ Rifle** - Green, Chrome Lined Barrel 15A4 **\$1,114**
- M15A4™ Rifle** - Black, Chrome Lined Barrel 15A4B **\$1,114**
- M15A4™ Rifle** - Green, Chrome Lined Barrel, Match Trigger 15A4N **\$1,214**
- M15A4™ Rifle** - Black, Chrome Lined Barrel, Match Trigger 15A4BN **\$1,214**

The M15A4™ is available with or without recoil check.

All models available in Realtree Hardwoods® or Advantage Classic® Camo Finish for an additional \$150.



**Add a Trijicon
ACOG Optical Sight**

Page 45 - LAW1100 . \$895.00

M15A4™ CARBINE .223 CALIBER

This is the .223 caliber sister of the famed AR-10A4™ Carbine. The M15A4™ carbine provides the benefits of ArmaLite®'s economical flattop flexibility in a short barreled, light recoiling format.

Handy and good looking, this rifle is compact, lightweight and maneuverable.

Shown with
optional
optical sight



*Comes with one 10 round magazine,
sling, owners manual and Lifetime Warranty.*

M15A4™ Carbine - Green, Chrome Lined Barrel 15A4C **\$1,114**

M15A4™ Carbine - Black, Chrome Lined Barrel 15A4CB **\$1,114**

M15A4™ Carbine - Green, Chrome Lined Barrel, Match Trigger 15A4CN **\$1,214**

M15A4™ Carbine - Black, Chrome Lined Barrel, Match Trigger 15A4CBN **\$1,214**

The M15A4™ Carbine is available with or without recoil check.

All models available in Realtree Hardwoods® or Advantage Classic® Camo Finish for an additional \$150.



**Add a Buttstock
Cleaning Kit**

Page 60 - EX3232 . . \$18.00

M15A2™

.223 CALIBER
The Service Rifle

The M15A2™ is ArmaLite®'s semi-automatic civilian version of the famed M16A2 rifle, the rifle you carried in the service. Durable and reliable for long field service, it's superb accuracy is based on the double-lapped and chrome lined barrel. Includes ArmaLite®'s adjustable front sight base, allowing the rifles rear sight to be centered.

An outstanding tactical rifle, excellent for Law Enforcement or entry level Service Rifle training.



Comes with one 10 round magazine, sling, owners manual and Lifetime Warranty.

- M15A2™ Rifle** - Green, Chrome Lined Barrel 15A2 **\$1,023**
- M15A2™ Rifle** - Black, Chrome Lined Barrel 15A2B **\$1,023**
- M15A2™ Rifle** - Green, Chrome Lined Barrel, Match Trigger 15A2N **\$1,123**
- M15A2™ Rifle** - Black, Chrome Lined Barrel, Match Trigger 15A2BN **\$1,123**

The M15A2™ is available with or without recoil check.

All models available in Realtree Hardwoods® or Advantage Classic® Camo Finish for an additional \$150.



**Add an
A.R.M.S. Inc.
#2 Carry Handle Mount**
Page 48 - EX1350 \$59.95



M15A2™ CARBINE .223 CALIBER

This is the carbine version of the M15A2™ rifle, the .223 caliber twin to the popular AR-10A2™ Carbine.

ArmaLite®'s exclusive mid-length handguards provide the handiness of a 16 inch long barrel, flexibility in grip position and an optimal gas pulse to power the operating system.



Comes with one 10 round magazine, sling, owners manual and Lifetime Warranty.

- M15A2™ Carbine** - Green, Chrome Lined Barrel 15A2C **\$1,023**
- M15A2™ Carbine** - Black, Chrome Lined Barrel 15A2CB **\$1,023**
- M15A2™ Carbine** - Green, Chrome Lined Barrel, Match Trigger 15A2CN **\$1,123**
- M15A2™ Carbine** - Black, Chrome Lined Barrel, Match Trigger 15A2CBN **\$1,123**

The M15A2™ Carbine is available with or without recoil check.

All models available in Realtree Hardwoods® or Advantage Classic® Camo Finish for an additional \$150.



M15A2™

NATIONAL MATCH

.223 CALIBER

ArmaLite®'s National Match rifles are unsurpassed. More national-level military shooters have chosen ArmaLites® than any other brand. In fact, the 2000 National Service Rifle Match AND the President's Match were both won by ArmaLites®.

They feature a special, triple-lapped barrel, National Match 1/4 wintage - 1/2 elevation sights with clear digits and the strongest floating barrel sleeve in the industry.

They also feature ArmaLite®'s exclusive, machined tool steel two-stage trigger mechanism.

The M15A2™ NM is CMP approved.

First Strike Range Cart
available
on page 49



Comes with one 10 round magazine, NM Sling, owners manual and Lifetime Warranty.

M15A2™ Nat'l Match - Green, SST Barrel, Match Trigger 15A2SN **\$1,435**

M15A2™ National Match - Black, SST Barrel, Match Trigger 15A2BSN **\$1,435**

The M15A2™ NM is available with or without recoil check, but with recoil check is not CMP legal.

All models available in Realtree Hardwoods® or Advantage Classic® Camo Finish for an additional \$150.



M15A4™ SPR® II .223 CALIBER

ArmaLite®'s new M15A4™ SPR® II rifle feature's a special, triple-lapped barrel, the strongest floating barrel sleeve in the industry, and ArmaLite®'s exclusive, machined tool steel two-stage trigger mechanism.



**Add an ArmaLite®
Scope Mount**
Page 38 - EX0027 . . \$89.00

Comes with one 10 round magazine, sling, owners manual and Lifetime Warranty.

M15A4™ SPR® II - Green, SST Barrel, Match Trigger 15A4SN \$1,280

M15A4™ SPR® II - Black, SST Barrel, Match Trigger 15A4BSN \$1,280

The M15A4™ SPR® II is available with or without recoil check.

All models available in Realtree Hardwoods® or Advantage Classic® Camo Finish for an additional \$150.



NEW - in .223 and .308!
SPECIAL
OPERATION
FORCES
CARBINE



M15™ SOF CARBINE .223 CALIBER

Evoking images straight out of our Special Operations Forces in Afghanistan . . . this is a tactical carbine suited for hard use or serious collecting.

The M4 type fixed stock carries the full flavor of the M4 carbine while complying with all government regulations in both .223/5.56 and .308/7.62mm.

The M15™ SOF is available in both A2 and A4 configurations. The flattop M15A4™ SOF features a Picatinny rail front sight base in place of the front sight housing.

Comes with one 10 round magazine, sling, owners manual and Lifetime Warranty.

- M15A2™ SOF** 15A2CBSOF **\$1,153**
- M15A2™ SOF Match Trigger** . . . 15A2CBNSOF **\$1,253**
- M15A4™ SOF** 15A4CBSOF **\$1,084**
- M15A4™ SOF Match Trigger** . . . 15A4CBNSOF **\$1,184**

AR-10® SOF CARBINE .308 CALIBER

Now this tactical carbine is also available in two AR-10® .308/7.62mm caliber configurations . . . because size matters!

The flattop AR-10A4™ SOF features a Picatinny rail front sight base.

Comes with two 10 round magazines, sling, owners manual and Lifetime Warranty.

- AR-10A2™ SOF** 10A2CBSOF **\$1,555**
- AR-10A2™ SOF Match Trigger** . 10A2CBNSOF **\$1,655**
- AR-10A4™ SOF** 10A4CBSOF **\$1,503**
- AR-10A4™ SOF Match Trigger** . 10A4CBNSOF **\$1,603**



AR-10® and M15™ CutAways

An excellent learning and training tool for new firearms enthusiasts, marksmanship programs, gunsmiths, police departments and military organizations, these cutaway versions of our popular rifles offer an inside look at many of the components and assemblies that make up the AR-10® and M15™ rifles. Additional information and pricing is available upon request.

- CutAway AR-10A2™ 10A2CUTAWAY
- CutAway AR-10A4™ 10A4CUTAWAY
- CutAway M15A2™ M15A2CUTAWAY
- CutAway M15A4™ M15A4CUTAWAY



.308 Caliber Top Ends

Each ArmaLite® top end includes upper receiver assembly, barrel assembly, bolt carrier group and charging handle assembly.

There's no faster or more economical way to convert your ArmaLite® for another use, or even another caliber. Have two or three rifles at great prices!

AR-10(T)™

Forged flattop upper, 24" stainless steel RH 1:10" twist T heavy barrel, Picatinny rail gas block and NM fiberglass handguard tube.



Green - U10T **\$960.00**
Black - U10TB **\$960.00**

AR-10(T)™ Carbine

Forged flattop upper, 16" stainless steel RH 1:10" twist barrel, Picatinny rail gas block, NM fiberglass handguard tube, with or without recoil check.



Green - U10TC **\$960.00**
Black - U10TCB **\$960.00**

AR-10A4™

Featuring a forged flattop upper, 20" chrome lined RH 1:10 twist heavy barrel and Picatinny rail gas block, with or without recoil check.



Green - U10A4 **\$748.00**
Black - U10A4B **\$748.00**
Stainless Steel Barrel - Green - U10A4S **\$801.00**
Stainless Steel Barrel - Black - U10A4BS **\$801.00**

AR-10A4™ Carbine

Featuring a forged flattop upper, 16" chrome lined RH 1:10 twist heavy barrel and Picatinny rail gas block, with or without recoil check.



Green - U10A4C **\$748.00**
Black - U10A4CB **\$748.00**

AR-10A2™

Featuring a forged A2 upper, 20" chrome lined RH 1:10 twist heavy barrel, with or without recoil check.



Green - U10A2 **\$790.00**
Black - U10A2B **\$790.00**
Stainless Steel Barrel - Green - U10A2S **\$843.00**
Stainless Steel Barrel - Black - U10A2BS **\$843.00**

AR-10A2™ Carbine

Featuring a forged A2 upper, 16" chrome lined RH 1:10 twist heavy barrel, with or without recoil check.



Green - U10A2C **\$790.00**
Black - U10A2CB **\$790.00**

We test fire all our top ends as complete rifles before shipping!

Barrel / Receiver Kits

Featuring the same upper receiver and barrel assembly as listed above, but without the bolt carrier group and charging handle assembly. All but AR-10(T)™ available with or without recoil check.

AR-10(T)™	Green - BRK10T \$695.00	• Black - BRK10TB \$695.00
AR-10(T)™ Carbine	Green - BRK10TC \$695.00	• Black - BRK10TCB \$695.00
AR-10A4™	Green - BRK10A4 \$483.00	• Black - BRK10A4B \$483.00
With Stainless Steel Barrel	Green - BRK10A4S \$536.00	• Black - BRK10A4BS \$536.00
AR-10A4™ Carbine	Green - BRK10A4C \$483.00	• Black - BRK10A4CB \$483.00
AR-10A2™	Green - BRK10A2 \$525.00	• Black - BRK10A2B \$525.00
With Stainless Steel Barrel	Green - BRK10A2S \$578.00	• Black - BRK10A2BS \$578.00
AR-10A2™ Carbine	Green - BRK10A2C \$525.00	• Black - BRK10A2CB \$525.00

Proper headspace should be verified by a trained gunsmith before using.



.308 Caliber Barrel Assemblies

All complete barrel assemblies include full front sight housing or picatinny rail, barrel nut and handguard cap. (T) and carbine models require ArmaLite® mid-length handguard.

AR10(T)™ 24" Stainless



24" stainless steel RH 1:10 twist T heavy barrel, with Picatinny rail gas block.

B10T **\$470.00**

AR10A4™ 20" HBAR



20" RH 1:10 twist heavy barrel, Picatinny rail gas block, with or without recoil check.

Chrome Lined - B10A4 **\$350.00**

Stainless Steel - B10A4S **\$400.00**

AR10A2™ 20" HBAR



20" RH 1:10 twist heavy barrel, with or without recoil check.

Chrome Lined - B10A2 **\$350.00**

Stainless Steel - B10A2S **\$400.00**

AR10(T)™ 16" Carbine Stainless



16" stainless steel RH 1:10 twist barrel, Picatinny rail gas block, with or without recoil check.

B10TC **\$470.00**

AR10A4™ 16" Carbine



16" RH 1:10 twist chrome lined heavy barrel with Picatinny rail gas block, available with or without recoil check.

B10A4C **\$350.00**

AR10A2™ 16" Carbine



16" RH 1:10 twist chrome lined heavy barrel, available with or without recoil check.

B10A2C **\$350.00**

AR-10® Detachable Carry Handle Assembly

Reliable back-up iron sights that mount perfectly on the 10(T)™ and 10A4™ models. Featuring ArmaLite's recoil-stopping cross-lug to prevent receiver damage due to lock-screw movement. With field sights, .70/.195 aperture. - EA5050



..... **\$115.00**

Front Sight Base with Picatinny Rail

AR-10(T)™
Stainless - EA1154 **\$49.00**

AR-10A4™
Moly - EA1151 **\$42.00**

Stainless - EA1153 **\$49.00**

Each requires 2 clamp screws- EA1152 .. No Charge

Each requires gas tube pin - EA1132 No Charge

Above do not include sling swivel (EU0190), rivet (EU0185) or pin (EU0241)



AR-10® Detachable Front Sight

Allows the use of the iron rear sight, but are removable to allow the use of telescopic sights without obstruction to the sight line.

EA5045 **\$50.00**

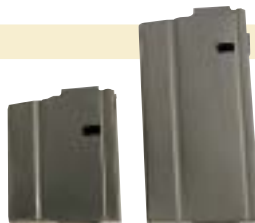


AR-10® .308 Caliber Mags

5 Round Mags
EX0505 **\$35.00**

10 Round Mags
EX0510 **\$30.00**

20 Round,
when available
EX0500 Call



Magazine Conversion Kit with Box

Includes converted mag body, follower and plunger. Requires receipt of customer's mag shell with order.
EA5085 **\$30.00**

Depot Overhaul Kits

Everything needed to do a complete overhaul on your rifle. Includes a complete rifle less the stripped upper, stripped lower and furniture. Also includes a Field Repair Kit, Spring Replacement Kit and a copy of the U.S.M.C. Technical Manual TM 05538C-23&P/2 Rifle Maintenance 5.56mm.

AR-10(T)™ - DOK10T **\$1,050.00**

AR-10A4™ - DOK10A4 **\$835.00**

AR-10A2™ - DOK10A2 **\$843.00**



ARMALITE® AR-10®/.308 PARTS

AR-10® A2™ Upper Receiver

Precision machined from high tensile strength 7175 T74 aluminum forgings, hardcoat anodized.

Stripped Upper - EA1003 \$249.00

Complete Upper, with rear sight and port door - EK0010 \$352.00



AR-10® A4™ Flattop Upper Receiver

Precision machined from high tensile strength 7175 T74 aluminum forgings, hardcoat anodized.

Stripped Upper - EA1000 \$239.00

Complete Upper with port door - EK0020 \$281.00



AR-10® Upper Receiver Parts

Ejection port door, AR-10®	EA1165	\$18.50
Ejection port door spring, AR-10®	EA1167	\$1.50
Ejection port cover rod, AR-10(T)™	EA1170	\$1.50
Ejection port cover rod, AR-10A2/A4™	EA1171	\$2.00

AR-10® Charging Handle Assembly

Adds a sculptured look!
EA1129 \$47.00

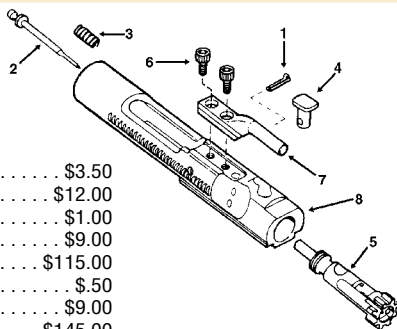
AR-10® Bolt Carrier Group Parts



AR-10® Complete Bolt Carrier Group

Chrome lined, affordably priced EA1085 \$257.00

1 Firing pin retaining pin, long (.945)	EA1009	\$3.50
2 Firing pin, AR-10®	EA1010	\$12.00
3 Firing pin spring, AR-10®	EA1011	\$1.00
4 Cam pin, AR-10®	EA1015	\$9.00
5 Bolt assembly, AR-10®	EA1080	\$115.00
6 Bolt carrier key screws	EB0140	\$5.00
7 Bolt carrier key	EB0150	\$9.00
8 Bolt carrier, AR-10®	EA1075	\$145.00

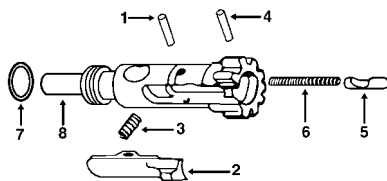


AR-10® Bolt Assembly Parts

1 Extractor pin, AR-10®	EA1020	\$5.00
2 Extractor, AR-10®	EA1025	\$33.00
3 Extractor spring, AR-10®	EA1030	\$5.00
4 Ejector pin, AR-10®	EA1040	\$5.00
5 Ejector, AR-10®	EA1045	\$2.00
6 Ejector spring, AR-10®	EA1050	\$6.00
7 McFarland™ Gas Ring, AR-10®	EA1055	\$3.50
8 Bolt, stripped, AR-10®	EA1060	\$90.00
Buna 70 O-Ring	EB0065	\$5.00
Extractor spring insert	EA1035	\$5.00

AR-10® Complete Bolt Assembly

EA1080 \$115.00



AR-10® Field Repair & Spring Replacement Kits *Key parts to keep your rifle firing for years!*

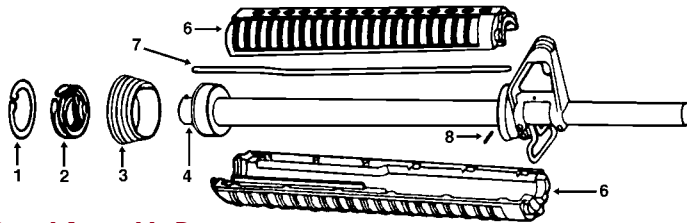
.308 Caliber AR-10® Field Repair Kit EA6020 \$60.00

Includes: helical spring (elevation, big), firing pin, firing pin spring, firing pin retaining pin, cam pin, extractor, extractor pin, extractor spring (2), ejector, ejector pin, ejector spring (2), McFarland™ Gas Ring, hammer spring, disconnecter spring (2), trigger spring.

.308 Caliber AR-10® Spring Replacement Kit EA6000 \$16.00

Includes: helical spring (3), helical spring (elevation, big), firing pin spring, extractor spring, ejector spring, port door spring, ejector/safety spring (2), detent spring (2), buffer detent spring, bolt stop spring, mag catch spring, hammer spring, disconnecter spring, trigger spring, charging handle latch spring, front sight spring

Genuine ArmaLite® Parts . . . Your best selection for long years of service.

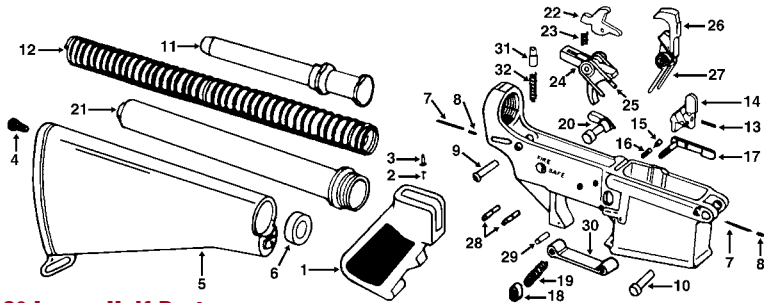


AR-10® Barrel Assembly Parts

1	Slip ring retaining ring, AR-10®	EA1160	\$.75
2	Slip ring spring, AR-10®	EA1155	\$7.00
3	Slip ring, AR-10®	EA1150	\$13.00
4	Barrel extension, AR-10®	EA1147	\$60.00
	Barrel nut, AR-10®	EA1149	\$18.50
	Barrel nut, AR-10(T)™	EA1146	\$15.00
6	Handguard set	EU0070	\$15.00
7	Gas tube, AR-10® Rifle	EA1131	\$12.00
	Gas tube, AR-10® Carbine	EA1128	\$12.00
8	Gas tube pin, AR-10®	EA1132	\$.50
	Handguard tube lock ring	EA5030	\$13.00

AR-10® Fiberglass Handguard Tube Assembly

Rifle Length - Green - EA5003	\$90.00
Rifle Length - Black - EA5001	\$90.00
Carbine Length - Green - EA5007	\$90.00
Carbine Length - Black - EA5005	\$90.00



AR-10® Lower Half Parts

9	Takedown pin, AR-10®	EA1113	\$6.00
	Takedown pin also available in oversize	EA5101	\$10.00
10	Pivot pin, AR-10®	EA1112	\$6.00
	Pivot pin also available in oversize	EA5100	\$10.00
11	Buffer, AR-10®	EA1090	\$18.00
12	Operating spring, AR-10®	EA1095	\$6.00
13	Bolt stop pin, AR-10®	EL0220	\$.50
14	Bolt stop, AR-10®	EA1100	\$16.00
17	Magazine catch, AR-10®	EA1108	\$12.00
18	Magazine catch button, AR-10®	EL0270	\$3.75
26	Hammer, AR-10®	EA1111	\$22.00
	Trip, bolt catch, AR-10®	EA5092	\$3.00
27	J-Spring	EL0311	\$2.00

See Page 35 for additional Lower Half Parts common to .223 and .308 caliber.

AR-10® Buttstock Assembly

Does not include buttstock screw, spacer, buffer, buffer spring or receiver extension.

Buttstock Assembly - Green - EA1120G	\$40.00
Buttstock Assembly - Black - EA1120	\$35.00



National Match Parts

National Match Two Stage Trigger

The same trigger mechanism used on ArmaLite®'s top grade rifles. The combination of a long first stage and light second stage gives the impression of a very light trigger while assuring long, safe sear surfaces. The ONLY fully machined tool steel trigger mechanism on the market. Available to fit both current large-pin Colt® brand rifles and ALL other commercial and military makes. Semiautomatic only.



★ For ArmaLite®, Colt® SP1™ or early AR-15™ and all other brands - EMNM01 \$180.00

National Match M15(T)™ Fiberglass Handguard Tube Assembly



Rifle Length - Green - EU0068 \$90.00
 Rifle Length - Black - EU0067 \$90.00
 Carbine Length - Green - EC0013 \$90.00
 Carbine Length - Black - EC0011 \$90.00

National Match M15A2™ Free Float Handguards



Black - EU0069 \$36.00
 Green - EG0080 \$40.00

National Match M15A2™ Barrel Assembly



20" stainless steel RH 1:8 twist heavy barrel, with full front sight housing, barrel nut and handguard cap. B15A2SN \$225.00

National Match M15A2™ Free Float Barrel Sleeve



With gas tube - EMNM04-1 \$133.00

National Match M15A2™ Complete Top End



Forged A2 upper with bolt carrier group, charging handle assembly and 20" stainless steel RH 1:8 twist heavy barrel with free floating barrel sleeve.

Green - U15A2S \$675.00
 Black - U15A2BS \$675.00

M15A2™ Clamp-On Front Sight Housing

ArmaLite®'s exclusive, forged and adjustable front sight base assures that you can always have the rear sight centered after zeroing, secured firmly by two strong clamp screws, no pins so it's reusable.



Black - EU0240MP... \$40.00

Front Sight Screws - EU0821 ... No Charge



National Match Rear Sight Kit - 1/2 W, 1/2 E

National Match Rear Sight Kit - 1/4 W, 1/2 E

★ **National Match Rear Aperture - .50/.60 Aperture**

★ **National Match Rear Aperture - .043/.050 Aperture**

EMNM06 \$80.00

EMNM07 \$80.00

ENM010 \$14.00

ENM011 \$16.00

ENM015 \$15.00

ENM021 \$10.00

ENM022 \$14.00

ENM030 \$30.00

★ National Match windage knob, 1/4 minute
 National Match elevation knob
 National Match elevation index knob
 National Match rear sight base



National Match Front Sight Post - .050 Blade

ENM040 \$12.00

National Match Pivot Pin Oversize to help tighten receivers

ENM001 \$10.00

National Match Takedown Pin Oversize to help tighten receivers

ENM002 \$10.00

National Match Gas Tube

EU0172 \$12.00

★ INDICATES PARTS USEABLE ON AR10®/.308 CALIBER



.223 Caliber Top Ends

Each ArmaLite® top end includes upper receiver assembly, barrel assembly, bolt carrier group and charging handle assembly.

There's no faster or more economical way to convert your ArmaLite® for another use, or even another caliber. Have two or three rifles at great prices!

M15A4(T)™

Forged flattop upper, 24" stainless steel RH 1:8 twist T heavy barrel, Picatinny rail gas block, NM fiberglass handguard tube.



Green - U15A4T \$600.00
 Black - U15A4TB \$600.00

M15A4(T)™ Carbine

Forged flattop upper, 16" stainless steel RH 1:9 twist barrel, Picatinny rail gas block, NM fiberglass handguard tube, with or without recoil check.



Green - U15A4TC \$600.00
 Black - U15A4TCB \$600.00

M15A4™

Forged flattop upper, 20" chrome lined RH 1:9 twist heavy barrel, Picatinny rail gas block, with or without recoil check.



Green - U15A4 \$500.00
 Black - U15A4B \$500.00

M15A4™ Carbine

Forged flattop upper, 16" chrome lined RH 1:9 twist heavy barrel, Picatinny rail gas block, with or without recoil check.



Green - U15A4C \$500.00
 Black - U15A4CB \$500.00

M15A2™

Forged A2 upper, 20" chrome lined RH 1:9 twist heavy barrel, with or without recoil check.



Green - U15A2 \$500.00
 Black - U15A2B \$500.00

M15A2™ Carbine

Forged A2 upper, 16" chrome lined RH 1:9 twist heavy barrel, with or without recoil check.



Green - U15A2C \$500.00
 Black - U15A2CB \$500.00

M15A2™ National Match

Forged A2 upper, 20" stainless steel RH 1:8 twist heavy barrel, free floating barrel sleeve, with or without recoil check.



Green - U15A2S \$675.00
 Black - U15A2BS \$675.00

We test fire all our top ends as complete rifles before shipping!

Barrel / Receiver Kits

Featuring the same upper receiver and barrel assembly as listed above, but without the bolt carrier group and charging handle assembly. All but M15A4(T)™ available with or without recoil check.

M15A4(T)™	Green - BRK15A4T \$480.00	Black - BRK15A4TB \$480.00
M15A4(T)™ Carbine	Green - BRK15A4TC \$480.00	Black - BRK15A4TCB \$480.00
M15A4™	Green - BRK15A4 \$380.00	Black - BRK15A4B \$380.00
M15A4™ Carbine	Green - BRK15A4C \$380.00	Black - BRK15A4CB \$380.00
M15A2™	Green - BRK15A2 \$380.00	Black - BRK15A2B \$380.00
M15A2™ Carbine	Green - BRK15A2C \$380.00	Black - BRK15A2CB \$380.00
M15A2™ National Match	Green - BRK15A2S \$555.00	Black - BRK15A2BS \$555.00

Proper headspace should be verified by a trained gunsmith before using.



.223 Caliber Barrel Assemblies

All our complete barrel assemblies include full front sight housing or picatinny rail, barrel nut and handguard cap.

M15A4(T)™ 24" Stainless



24" stainless steel RH 1:8 twist heavy barrel, with Picatinny rail gas block.

B15A4T **\$225.00**

M15A4™ 20" SPR



20" chrome lined RH 1:9 twist heavy barrel, Picatinny rail gas block, with or without recoil check.

B15A4 **\$190.00**

Pre-Ban M4C™ 16" Carbine Barrel Assembly

16" chrome-moly RH 1:9 twist barrel with a permanently attached 4.33" flash suppressor - EC0082 . . . **\$200.00**

Pre-Ban M15A2™ 20" HBAR Barrel Assembly

20" chrome lined RH 1:9 twist heavy barrel, threaded - EU0249 **\$180.00**

Pre-Ban M15A2™ 20" Nat'l Match Barrel Assembly

20" stainless steel RH 1:8 twist heavy barrel, threaded - EU0247 **\$225.00**

M15A2™ 20" Nat'l Match



20" stainless steel RH 1:8 twist heavy barrel, with or without recoil check.

B15A2SN. **\$225.00**

M15A2™ HBAR



20" RH 1:9 twist heavy barrel, with or without recoil check.

Chrome Lined - B15A2 **\$180.00**

Chrome Moly - B15A2M **\$160.00**



ArmaLite® Exclusive - .223 Caliber Carbine Barrel Kits

Includes a complete barrel assembly, gas tube and our new improved mid-length handguard.

M15A4(T)™ Carbine

16" stainless RH 1:9 twist barrel, Picatinny rail gas block, with or without recoil check.

Green - BK15A4TC **\$325.00**

M15A4™ Carbine

16" chrome lined RH 1:9 twist barrel, Picatinny rail gas block, with or without recoil check.

Green - BK15A4C **\$222.00**

M15A2™ Carbine

16" chrome lined RH 1:9 twist barrel, with or without recoil check.

Green - BK15A2C **\$222.00**

Black - BK15A2CB **\$222.00**



Black - BK15A4TCB **\$325.00**



Black - BK15A4CB **\$222.00**



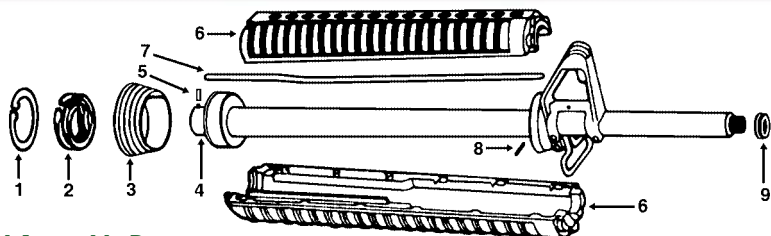
Depot Overhaul Kits

Everything needed to do a complete overhaul on your rifle. Includes a complete rifle less the stripped upper, stripped lower and furniture. Also includes a Field Repair Kit, Spring Replacement Kit and a copy of the U.S.M.C. Technical Manual TM 05538C-23&P/2 Rifle Maintenance 5.56mm.

M15A4(T)™ - Stainless Steel Barrel - DOK15A4T. **\$824.00**

M15A4™ - Chrome Lined Barrel - DOK15A4 **\$592.00**

M15A2™ - Chrome Lined Barrel - DOK15A2 **\$602.00**



Barrel Assembly Parts

1 Slip ring retaining ring	EU0320	\$1.00
2 Slip ring spring	EU0310	\$4.50
3 Slip ring	EU0300	\$11.00
Delta Ring Kit, Rifle Not for "T" models	EMK027	\$16.50
4 Barrel extension	EU0331	\$35.00
5 * Barrel extension index pin	EU0332	\$3.00
Handguard cap	EU0333	\$3.00
6 * Handguard set, M15A2™ (round)	EU0070	\$15.00
7 Gas tube, rifle	EU0170	\$12.00
Gas tube, post-ban carbine	EC0058	\$12.00
8 Gas tube retaining pin	EU0160	\$.50
9 Shim washer	EU0120	\$2.50
Lock washer	EU0140	\$1.75

Two Port Recoil Check



Moly - not threaded	EA1195M2-1	\$30.00
Moly - threaded	EA1195M2	\$30.00
Stainless - not threaded	EA1195ST-1	\$30.00
Stainless - threaded	EA1195ST	\$30.00

Pre-Ban A2 Muzzle Brake



EU0100	\$5.25
--------	--------

M15A2™ Clamp-On Front Sight Housing

Our exclusive forged-steel clamp-on front sight base allows you to zero the front sight so that the rear sight is perfectly centered. Massive clamp screws hold the base tightly in place without the bore deformation common to the usual, difficult to service pins - no pins, so it is easily reusable.



Black - EU0240M	\$43.50
Front Sight Screws - EU0821	No Charge

Front Sight Base Gas Block Long with Picatinny Rail



* M15A4(T)™ Stainless Steel	EA1154	\$49.00
M15A2™/A4™ Moly	EU0236	\$42.00
M15A2™/A4™ Stainless Steel	EU0237	\$49.00
Each requires 2 clamp screws - EA1152	No charge	
Each requires gas tube pin - EA1132	No charge	
Does not include sling swivel (EU0190), rivet (EU0185) or pin (EU0241)		

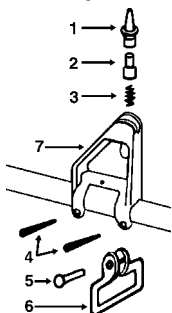
M15A4™ Detachable Front Sight Assembly

Allows the use of the iron rear sight, but removable to allow the use of telescopic sights without obstruction.



E20151	\$50.00
--------	---------

Front Sight Parts



1 * Front sight post, square	EU0210	\$4.00
2 * Front sight detent	EU0231	\$1.15
3 * Front sight spring	EU0230	\$.50
4 * Front sight pin	EU0241	\$3.00
5 * Front sling swivel rivet	EU0185	\$2.00
6 * Front sling swivel	EU0190	\$2.75
7 * Front sight housing	EU0240	\$60.00
* Front sight screws - 2 pair	EA1152	\$1.00

* INDICATES PARTS USEABLE ON AR10®/.308 CALIBER



ARMA-LITE® M15™/.223 PARTS

.223 Caliber A2 Upper Receiver

Precision machined from high tensile strength 7075 T6 aluminum forgings, hardcoat anodized.

Stripped Upper - E20140B \$133.00

Complete Upper, with forward assist, rear sight and port door - EK0110 \$228.00

With NM Rear Sight - EK0111 \$257.00



.223 Caliber A4 Flattop Upper Receiver

Precision machined from high tensile strength 7075 T6 aluminum forgings, hardcoat anodized.

Stripped Upper - EU0520B \$133.00

Complete Upper, with forward assist and port door - EK0130 \$172.00



Upper Receiver Parts

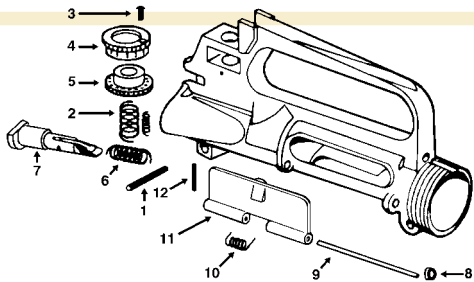


Charging Handle Assembly

Exclusive forged 705 T6 charging handle, reinforced and thicker for extra strength.

EU0010B \$26.00

Standard charging handle, without reinforced gusset, for use with .22LR conversion unit. EU0010 \$26.00



- 1 * Rear sight retaining/forward assist pin
 - 2 * Helical spring, elevation (large)
 - 3 * Index set screw
 - 4 Elevation index
 - 5 * Elevation knob - standard
 - 6 Forward assist spring
 - 7a Forward assist (teardrop)
 - 7b Forward assist (round)
 - 8 Ejection port cover pin retaining clip
 - 9 Ejection port cover pin
 - 10 Ejection port cover spring
 - 11 Ejection port cover
 - 12 Forward assist retaining pin
- Forward Assist Kit (Teardrop)
Forward Assist Kit (Round)
Port Door Kit

E20090	\$.50
E20100	\$.75
E20110	\$2.00
E20120	\$6.00
E20130	\$6.00
EU0480	\$.75
EU0470	\$15.00
EU0460	\$10.00
EU0350	\$.35
EU0340	\$1.50
EA1167	\$.40
EU0370	\$4.50
E20090	\$.50
EMK008	\$15.00
EMK007	\$11.30
EMK009	\$6.75

A2 Rear Sight Parts

A2 Rear Sight Kit Complete

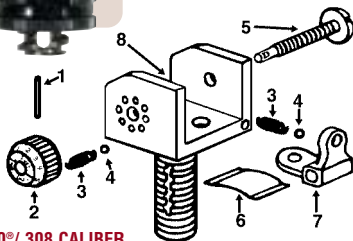
Featuring ArmaLite's® exclusive numbered windage knob! Includes items #1 thru #8 below.

EM2001 \$55.00



- 1 * Windage knob pin
- 2 * Numbered Windage knob
- 3 * Helical spring (3 per rifle)
- 4 * Ball bearing (3 per rifle)
- 5 * Windage screw
- 6 * Aperture spring
- 7 * Rear sight aperture, .60/.70
- 8 Standard sight base

E20020	\$.50
E20035	\$9.00
E20040	\$.50
E20050	\$.50
E20060	\$2.75
EU0440	\$1.00
E20070	\$9.00
E20080	\$18.00



* INDICATES PARTS USEABLE ON AR10®/.308 CALIBER



Bolt Carrier Group Parts

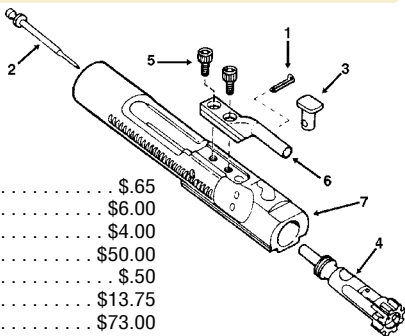


Complete Bolt Carrier Group

Key parts, affordably priced!

Includes items #1 thru #7 below - EB0170 . . . **\$135.00**

1	Firing pin retaining pin	EB0010	\$.65
2	Firing pin	EB0020	\$6.00
3	Cam pin	EB0030	\$4.00
4	Bolt assembly	EB0040	\$50.00
5	★ Key screws	EB0140	\$.50
6	★ Bolt carrier key	EB0150	\$13.75
7	Bolt carrier	EB0160	\$73.00



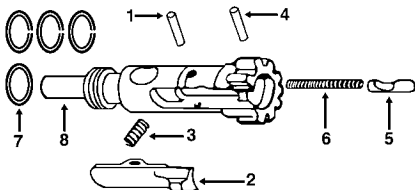
Bolt Assembly Parts

McFarland Gas Rings These seal tightly and may require a break-in period of 250 rounds.

1	piece, .223 caliber - EB0121	\$1.25	
1	Extractor pin	EB0050	\$.60
2	Extractor	EB0060	\$15.50
3a	Extractor spring	EB0070	\$.50
3b	Extractor spring plunger	EB0080	\$1.00
4	Ejector pin	EB0090	\$.50
5	Ejector	EB0100	\$2.00
6	Ejector/Safety spring	EB0110	\$.75
7	Gas rings, each	EB0120	\$.40
8	Bolt (stripped)	EB0130	\$44.25

Complete Bolt Assembly

EB0040 **\$50.00**



Lower Half Parts

Lower Receiver Parts Kit

Includes: ejector/safety spring, pistol grip screw, pistol grip washer, black pistol grip, safety detent, detent spring (2), detent (2), takedown pin, pivot pin, buffer detent, buffer detent spring, bolt stop pin, bolt stop, bolt stop plunger, bolt stop spring, mag catch, mag catch button, mag catch spring, safety selector, hammer and trigger pin, hammer, hammer spring, disconnecter, disconnecter spring, standard trigger, trigger spring, trigger guard assembly, trigger guard pin big.

With Green Pistol Grip - EMK014G	\$69.00
With Black Pistol Grip - EMK014	\$69.00

Lower Receiver Parts Kit with NM Trigger

Includes: ejector/safety spring, pistol grip screw, pistol grip washer, black pistol grip, safety detent, detent spring (2), detent (2), takedown pin, pivot pin, buffer detent, buffer detent spring, bolt stop pin, bolt stop, bolt stop plunger, bolt stop spring, mag catch, mag catch button, mag catch spring, safety selector, hammer spring, trigger spring, trigger guard assembly, trigger guard pin big, stage two NM trigger, stage two NM hammer, stage two NM disconnecter, stage two NM disconnecter pin, stage two disconnecter spring, NM hammer/trigger pin (.155).

With Green Pistol Grip - EMK013G	\$206.00
With Black Pistol Grip - EMK013	\$205.00



Ambidextrous Safety Selector

.223 caliber only.
EX0097 **\$40.00**



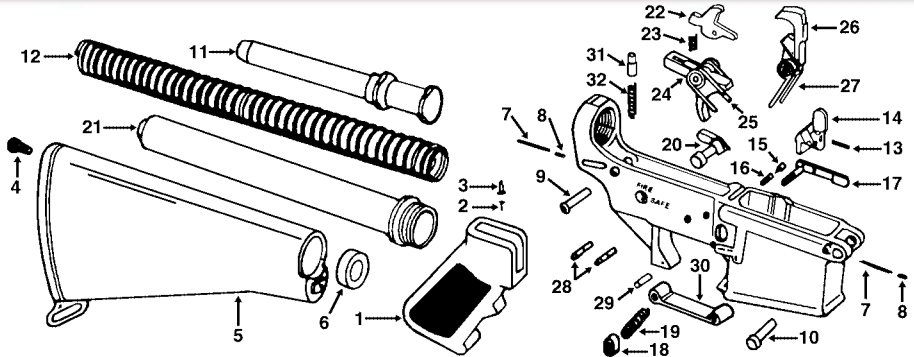
Extended Bolt Stop

Pin not included, uses existing pin.
EX0096 **\$54.00**
Bolt stop pin - EL0220 \$.50

★ INDICATES PARTS USEABLE ON AR10®/.308 CALIBER



ARMALITE® M15™/.223 PARTS



Lower Half Parts

1	★ Pistol grip, black	EL0030	\$5.00
1	★ Pistol grip, green	EG0050	\$6.00
	★ Pistol grip screw	EL0010	\$1.00
	★ Pistol grip screw washer	EL0020	\$.50

Pistol Grip Kit includes grip, screw and washer
 Black - EMK020 \$6.50 • Green - EMK020G \$7.50

2	★ Ejector/Safety spring (2 per rifle)	EB0110	\$.75
3	★ Safety detent	EL0060	\$1.00
4	★ Buttstock screw (A2)	EL0090	\$3.00
5	★ Buttstock Assembly (A2), black	EL0110	\$35.00
5	★ Buttstock Assembly (A2), green	EG0020	\$40.00
	★ Rear sling swivel	EL0120	\$3.00
	★ Rear sling swivel screw	EL0122	\$3.00
6	★ Buttstock spacer	EL0130	\$1.50

A2 Buttstock Kit includes buttstock, screw, spacer, buffer, buffer spring, receiver extension
 Black - EMK017 \$65.00 • Green - EMK017G \$70.00

7	★ Detent spring (2 per rifle)	EL0140	\$.75
8	★ Detent (2 per rifle)	EL0150	\$.75
9	Takedown pin	EL0160	\$5.00
10	Pivot pin	EL0170	\$5.00
11	Buffer	EL0180	\$14.00
12	Buffer spring	EL0210	\$2.50
13	★ Bolt stop pin	EL0220	\$.50
14	Bolt stop	EL0230	\$8.00
15	★ Bolt stop plunger	EL0240	\$1.25
16	★ Bolt stop spring	EL0250	\$.75
17	Mag catch	EL0260	\$6.00
18	★ Mag catch button (aluminum)	EL0270	\$3.75
19	Mag catch spring	EL0280	\$.75
20	★ Safety selector	EL0290	\$10.00
21	★ Rifle receiver extension	EL0370	\$20.50
22	★ Disconnecter	EL0330	\$6.00
23	★ Disconnecter spring	EL0340	\$.75
24	★ Standard Trigger	EL0350	\$15.00
25	★ Trigger spring	EL0360	\$1.50
26	Hammer	EL0310	\$22.00
27	★ Hammer spring	EL0320	\$1.50
28	★ Hammer and trigger pin	EL0300	\$1.25
29	★ Trigger guard pin	EL0430	\$.35
30	★ Trigger guard assembly	EL0380	\$8.00
31	★ Buffer detent	EL0190	\$1.00
32	★ Buffer detent spring	EL0200	\$1.00
	Offset Pin (GI upper to large pin lower)	EX0200	\$.50
	Offset Bushing (Large pin upper to GI lower)	EX0201	\$.50

Standard Trigger Group EMK005 \$35.00

★ INDICATES PARTS USEABLE ON AR10®/.308 CALIBER

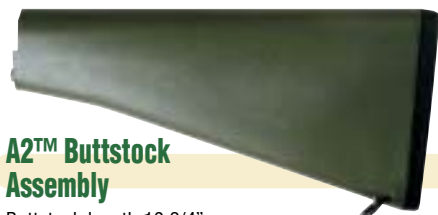


Post-Ban Carbine Buttstock Kit



9 1/2" fixed length, includes buffer, buffer spring, tube. Will not work on AR10's.

- Green, Plastic - EMK016G **\$80.00**
- Black, Teflon coated aluminum- EMK016 . **\$130.00**



A2™ Buttstock Assembly

Buttstock length 10 3/4". Does not include buttstock, buttstock screw, spacer, buffer, buffer spring, receiver extension.

- Green - EG0020 **\$40.00**
- Black - EL0110 **\$35.00**

A2 Buttstock Kit

Includes buttstock, screw, spacer, buffer, buffer spring, receiver extension

- Black - EMK017 **\$65.00**
- Green - EMK017G **\$70.00**

A2™ Standard Pistol Grip

- Green - EG0050 **\$6.00**
- Black - EL0030 **\$5.00**



Pistol Grip Kit

Includes grip, screw and washer

- Black - EMK020 **\$6.50**
- Green - EMK020G **\$7.50**

A2™ Handguard Set



- For AR-10A4™, AR-10A2™, M15A4™, and M15A2™.
- Green - EG0040 **\$20.00**
 - Black - EU0070 **\$22.50**

A2 Furniture Set

For AR-10A4™, AR-10A2™, M15A4™, and M15A2™. Includes A2 handguard set, pistol grip and buttstock assembly. Does not include buttstock spacer, buffer, buffer spring or receiver extension.

- Green - EG0100 **\$66.00**
- Black - EG0200 **\$55.00**

Carbine Mid-Length Handguard Set



ArmaLite's longer, improved 8" handguard!

- Green - EG0060 **\$20.00**
- Black - EC0059 **\$15.00**

Post-Ban Carbine Furniture Set

For post-ban ArmaLite® AR-10® and M15™ Carbines. Featuring ArmaLite's exclusive improved longer 8" handguard. Includes A2 buttstock assembly, mid-length handguard set and standard pistol grip.

- Green - EG0150 **\$66.00**
- Black - EG0250 **\$55.00**

Pre-Ban Carbine Buttstock Kit



Collapsible, extended length 9 1/2" - includes buffer, buffer spring, tube. Will not work on AR10's.

- Green, Plastic - EMK015G **\$80.00**
- Black, Teflon coated aluminum- EMK015 . **\$130.00**

Pre-Ban Carbine Furniture Set

For existing original "shorty" carbines. Includes retractable buttstock, 6" handguards and pistol grip.

- Green - EG0155 **\$150.00**
- Black - EG0255 **\$140.00**

More Carbine Parts

- CAR Buffer - EC0030 **\$12.00**
- CAR buffer spring - EC0040 **\$2.50**
- CAR Receiver extension - EC0050 **\$24.00**
- CAR gas tube, for short handguard - EC0060 **\$12.00**
- Handguard cap - EC0081 **\$5.00**

CAR Handguard Set, Original Shorty Style

- Green - EG0070 **\$24.00**
- Black - EC0070 **\$22.50**



Camouflage Furniture Sets

Each includes A2 buttstock assembly, handguard set and pistol grip.

Carbine Length Set handguards are ArmaLite®'s mid-length handguards.



RealTree Hardwoods® Furniture Sets

Realtree Hardwoods® camouflage is three-dimensional looking with 13 natural colors. Realistic leaves and limbs with light to dark contrast allow the hunter to blend with a variety of habitats.

Rifle Length Furniture Set	
EG0100RTH	\$130.00
Carbine Length Furniture Set	
EG0150RTH	\$130.00

Advantage Classic® Furniture Sets

Advantage Classic® blends with every environment. Up close the detailed leaves and limbs offer quality concealment and at a distance break up the human outline, ensuring the opportunity to bag your game.

Rifle Length Furniture Set	
EG0100AC	\$130.00
Carbine Length Furniture Set	
EG0150AC	\$130.00

3-Way Adjustable Buttplate

Adds 2.5" to length, complete with rubber buttpad, for .223 caliber and .308 caliber.
Green - EX0820 . . . **\$89.95**
Black - EX0825 . . . **\$89.95**



Rifle Recoil Pad

For use on rifles and post-ban carbines
1537 . . . **\$15.00**



Carbine Recoil Pad

For use on pre-ban carbines
BW1538 **\$15.00**



M15™ Field Repair & Spring Replacement Kits

Key parts to keep your rifle firing for years!

.223 Caliber M15™ Field Repair Kit EMK012 **\$33.50**
Includes: helical spring (elevation, big), firing pin, firing pin retaining pin, cam pin, extractor, extractor pin, extractor spring (2), extractor spring plunger (2), ejector/safety spring (2), hammer spring, disconnecter, disconnecter spring (2), trigger spring, gas rings.

.223 Caliber M15™ Spring Replacement Kit EMK010 **\$15.00**
Includes: helical spring (3), helical spring (elevation, big), extractor spring, extractor spring plunger, ejector/safety spring (2), detent spring (2), buffer detent spring, bolt stop spring, mag catch spring, hammer spring, disconnecter spring, trigger spring, charging handle latch spring, front sight spring, ejection port cover spring, forward assist spring.



M15A4™ Detachable Carry Handle Assembly

Forged and machined for high quality, these reliable back-up iron sights mount perfectly on the flattop M15A4(T)™ and M15A4™ models.

Featuring ArmaLite's recoil-stopping cross-lug to prevent receiver damage due to lock-screw movement. Fits all rifles with MIL STD upper receivers, comes with battle sights.



M15A4™ Detachable Carry Handle Assembly - E20149 \$97.00



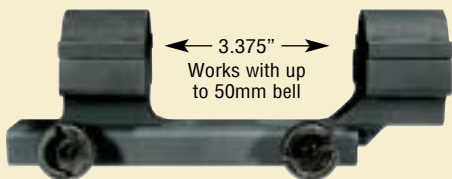
M15A4™ Detachable Front Sight Assembly

A detachable front sight allows the use of the iron rear sight, but is easily removed to allow the use of telescopic sights without obstruction.

M15A4™ Detachable Front Sight Assembly - E20151 \$50.00

ArmaLite® Scope Mounts

ArmaLite's scope mounts provide outstanding, repeatable engagement with the MILSTD 1913 (picatinny) rail used on all modern ARs, while placing the scope centerline at the same position as the iron sights of the M15A2™ rifle... you use the same stock weld with the scope that you do with the iron sights. Available in both 1 Inch and 30mm models.



ArmaLite® One Piece Rings & Mount

1 Inch Scope Mount - EX0027 \$89.00
30mm Scope Mount - EX0022 \$89.00

ArmaLite® Two Piece Rings & Mount

1 Inch - EX0029 \$89.00
30mm - EX0024 \$89.00



M15™ .223 Caliber Mags

Aluminum 5 Round
Blocked 20 round mag
EX0075 **\$17.00**

Aluminum 10 Round
Blocked 20 round mag
EX0072 **\$16.00**

.22LR Conversion Unit

The "Atchisson" Mark III
By Jonathon Arthur Ciener, Inc.

Blowback operated conversion device replaces the standard bolt in .223 cal. AR type rifles and allows the use of inexpensive .22LR ammunition. Note: Use on ArmaLite® rifles requires a standard charging handle, not the ArmaLite® reinforced charging handle assembly, Part # EU0010.



.22 LR Conversion Unit, with 10 Round Mag AR15K10 \$139.00
Extra 10 Round Mag - ATCHM10 \$25.00

Clam Shell Style Sight Protectors

Tough, hard plastic sight protectors swing open clam shell style and snap shut securely.

EX3213 **\$19.00**



ArmaLite® Chamber Flag

Assures that the chamber is empty, a requirement for Camp Perry.

EX0051 **\$2.50**

www.armalite.com . . .

Secure Online Ordering and so much more!

ArmaLite®'s website is constantly evolving to better serve the needs of our customers. Stop by anytime for:

- Our complete online catalog of firearms, parts and shooting accessories
- Internet-only specials and close-outs
- The latest news from ArmaLite®, including new product announcements, press releases and technical bulletins
- A wealth of valuable technical information, including product manuals and our complete library of Tech Notes
- The ArmaLITER™ E-Newsletter
- The ArmaLite® Hall of Fame
- Law Enforcement sales information
- A searchable database of ArmaLite® stocking dealers



The ArmaLITER™ E-Newsletter . . .

The ArmaLITER™ is ArmaLite®'s new bi-monthly newsletter geared for those firearms enthusiasts who prefer ArmaLites® to any other firearm. Inside each issue you will find information about ArmaLites® upcoming events, product showcases, spotlight on our dealers and distributors, tech tips, and information about ArmaLite® online. It is our hope that you will find this newsletter informative and entertaining.



Log on to www.armalite.com to register to receive The ArmaLITER™ and other valuable info!

The ArmaLite® AR-10® Video . . .

This video was made by ArmaLite® in 1957 for military sales and is the same video available via streaming media on our website. This VHS video is 15 minutes long and features Eugene Stoner emerging from the sea shooting his AR-10 and putting it through it's paces throughout the video. In addition you'll see fully automatic AR-10s, belt fed AR-10s and grenade launching. A real AR-10 collector's item!

The ArmaLite® AR-10® Video - EX9100 \$15.00

ArmaLite® Technical Bulletin Binder . . .

This convenient binder gathers together a complete set of the ArmaLite® Technical Notes, published on items of interest to ArmaLite® rifle owners, featuring a wealth of information on rifle specifications, tips on breaking-in and maintaining your rifle, ammunition recommendations and much more.

ArmaLite® Technical Bulletin Binder - Volume I - EX0094 \$20.00

ARMALITE® AR-10® & M15™

AR-10® & M15™ Standard Features		ITEM #	CAL.	UPPER RECEIVER	STANDARD BARREL	RIFLING TWIST
AR-10® Series .308 Caliber	AR-10B™	10B	.308	A2	20" CHROME LINED MED	RH 1:10 IN
	AR-10(T)™	10TN	.308	FLATTOP	24" STAINLESS T HEAVY	RH 1:10 IN
	AR-10(T)™ Carbine	10TCN	.308	FLATTOP	16" STAINLESS CARBINE	RH 1:10 IN
	AR-10A4™ SPR®	10A4	.308	FLATTOP	20" CHROME LINED HBAR	RH 1:10 IN
	AR-10A4™ Carbine	10A4C	.308	FLATTOP	16" CHROME LINED CAR	RH 1:10 IN
	AR-10A2™	10A2	.308	A2	20" CHROME LINED HBAR	RH 1:10 IN
	AR-10A2™ Carbine	10A2C	.308	A2	16" CHROME LINED CAR	RH 1:10 IN
M15™ Series .223 Caliber	M15A4(T)™	15A4TN	.223	FLATTOP	24" STAINLESS T HEAVY	RH 1:8 IN
	M15A4(T)™ Carbine	15A4TCN	.223	FLATTOP	16" STAINLESS CARBINE	RH 1:9 IN
	M15A4™ SPR®	15A4	.223	FLATTOP	20" CHROME LINED HBAR	RH 1:9 IN
	M15A4™ Carbine	15A4C	.223	FLATTOP	16" CHROME LINED CAR	RH 1:9 IN
	M15A2™	15A2	.223	A2	20" CHROME LINED HBAR	RH 1:9 IN
	M15A2™ Carbine	15A2C	.223	A2	16" CHROME LINED CAR	RH 1:9 IN
	M15A2™ National Match	15A2SN	.223	A2	20" STAINLESS NM SLEEVED	RH 1:8 IN
	M15A4™ SPR® II	15A4SN	.223	FLATTOP	20" STAINLESS NM SLEEVED	RH 1:8 IN

Popular Options and Accessories

For ArmaLite® AR-10® Series and M15™ Series Rifles and Carbines

		AR-10B™	AR-10(T)™	AR-10(T)™ Carbine	AR-10A4™ SPR®
Stainless Steel Barrel			STD	STD	OPT
Two Stage Match Trigger		OPT	STD	STD	OPT
Detachable Carry Handle, AR-10®	#EA5050		OPT	OPT	OPT
Detachable Carry Handle, M15™	#E20149				
Detachable Front Sight, AR-10®	#EA5045		OPT	OPT	OPT
Detachable Front Sight, M15™	#E20151				
ArmaLite® 1 Inch Scope Mount	#EX0027		OPT	OPT	OPT
ArmaLite® 30mm Scope Mount	#EX0022		OPT	OPT	OPT
ARMS Inc. AR-10A2® Scope Mount	#EX1351				
ARMS Inc. M15A2™ Scope Mount	#EX1350				
Advantage Classic® Camo Finish					OPT
Realtree Hardwoods® Camo Finish					OPT

STD: Standard Feature OPT: Optional Feature

STANDARD FEATURES & OPTIONS

RECOIL CHECK	TRIGGER TYPE	FRONT SIGHT BASE	REAR SIGHT	LENGTH	WEIGHT	RETAIL PRICE	PAGE NUMBER
OPTIONAL	STANDARD	M16 STYLE	BATTLE	41.0 IN	9.4 LBS	\$1,635	Page 9
NONE	NM TWO STAGE	GAS BLOCK	NONE	43.5 IN	10.8 LBS	\$2,080	Page 10
OPTIONAL	NM TWO STAGE	GAS BLOCK	NONE	37.0 IN	8.8 LBS	\$2,080	Page 11
OPTIONAL	STANDARD	GAS BLOCK	NONE	41.0 IN	9.0 LBS	\$1,383	Page 12
OPTIONAL	STANDARD	GAS BLOCK	NONE	37.0 IN	8.4 LBS	\$1,383	Page 13
OPTIONAL	STANDARD	M16 STYLE	BATTLE	41.0 IN	9.4 LBS	\$1,435	Page 14
OPTIONAL	STANDARD	M16 STYLE	BATTLE	37.0 IN	8.7 LBS	\$1,435	Page 15
NONE	NM TWO STAGE	GAS BLOCK	NONE	42.4 IN	9.2 LBS	\$1,383	Page 16
OPTIONAL	NM TWO STAGE	GAS BLOCK	NONE	35.5 IN	7.1 LBS	\$1,383	Page 17
OPTIONAL	STANDARD	GAS BLOCK	NONE	39.5 IN	7.9 LBS	\$1,114	Page 18
OPTIONAL	STANDARD	GAS BLOCK	NONE	35.6 IN	7.0 LBS	\$1,114	Page 19
OPTIONAL	STANDARD	M16 STYLE	FIELD	39.5 IN	8.1 LBS	\$1,023	Page 20
OPTIONAL	STANDARD	M16 STYLE	FIELD	35.6 IN	7.0 LBS	\$1,023	Page 21
OPTIONAL	NM TWO STAGE	M16 STYLE	MATCH	38.4 IN	9.0 LBS	\$1,435	Page 22
OPTIONAL	NM TWO STAGE	GAS BLOCK	NONE	38.4 IN	8.8 LBS	\$1,280	Page 23

AR-10A4™ Carbine		AR-10A2™		M15A4(T)™		M15A4(T)™ Carbine		M15A4™ SPR®		M15A4™ Carbine		M15A2™		M15A2™ Carbine		M15A2™ NM		M15A4™ SPR® II	
OPT	OPT	OPT	STD	STD										STD	STD				
OPT	OPT	OPT	STD	STD	OPT	OPT	OPT	OPT	OPT	OPT	OPT	OPT	OPT	STD	STD				
OPT																			
				OPT	OPT	OPT	OPT	OPT	OPT	OPT	OPT	OPT	OPT						OPT
				OPT	OPT	OPT	OPT	OPT	OPT	OPT	OPT	OPT	OPT						OPT
				OPT	OPT	OPT	OPT	OPT	OPT	OPT	OPT	OPT	OPT						OPT
	OPT	OPT																	
OPT	OPT	OPT							OPT	OPT	OPT	OPT	OPT	OPT	OPT	OPT	OPT	OPT	OPT
OPT	OPT	OPT							OPT	OPT	OPT	OPT	OPT	OPT	OPT	OPT	OPT	OPT	OPT

STD: Standard Feature OPT: Optional Feature

ArmaLite® AR-22™ Blank Firing Device

for the MK19 MOD 4 Grenade Machinegun

The AR-22™ is a test and training system for the MK19 Mod 4 Grenade Machinegun. It allows realistic field training with the MK19, testing weapons after service or repair, and before-operation function checking even if a live-fire range isn't available. The key to the system is a special barrel and a belt of matching adapter cartridges that powers the MK19 with the energy from 7.62mm blanks.



The AR-22™ consists of:

- A special barrel that mounts inside the barrel of the MK19.
- A yoke that surrounds the flash suppressor and secures the special barrel.
- A round discriminator to prevent feeding HE grenades.
- A belt of adapter cartridges that accepts standard 7.62mm M80 blanks and feed into the MK19 in the same manner as HE grenades.
- A modified ammunition can that accepts the ammunition belt.
- A spanner wrench, punch, and plier for installing the system and reloading and relinking the cartridges.

The special barrel is inserted into the MK19 barrel and secured with the yoke. The AR-22™ barrel is equipped with brass contact rings, so that the bore of the weapon isn't damaged. The round discriminator is installed between the MK19's feed chute and receiver to prevent the introduction of live ammunition. The ammunition and the AR-22™ ammunition belt are loaded in the usual manner. The weapon is charged and fired as if firing live ammunition, and the fired cartridges drop out the bottom of the MK19.

After firing, the fired adapters are gathered and the links are pushed back into position. The expended 7.62mm cartridges are pushed out with a drift punch and the adapters are relinked using a pair of pliers. New blanks are inserted into the adapter chambers and the belt is returned to the ammunition can.

ArmaLite® AR-22™ Blank Firing Device \$2,495.00

Special Volume Pricing Available to Government Agencies

Technical Note 22: Use of 80-Grain Match Bullets

Numerous customers have asked, or complained, about the inability to fire handloads using Sierra 80-grain match bullets in ArmaLite® rifles. Some have been stunningly successful doing so, others have failed.

FACTS: The ability of a rifle barrel to stabilize a bullet depends on a number of factors, including the fit of the bullet to the bore, its alignment upon entering the rifling, and the rate of stabilizing twist.

Target shooters frequently purchase special barrels featuring specific chamber contours intended for a single bullet form. They understand and accept that their rifle may not fire accurately, or even safely, with cartridges bearing a different bullet. ArmaLite®, on the other hand, must build rifles that serve safely and reasonably accurately with all commercial and military cartridges available. A factory rifle is necessarily a compromise built to industry standards, not custom standards.

ArmaLite®'s National Match barrels were originally designed for 69-grain bullets. The original 9-inch twist rate was increased to 8 inches when commercial 80-grain cartridges became available. The 9-inch twist barrels don't stabilize 80-grain bullets. The chambers of both barrels feature generous freebore to allow a wide variety of bullets. Long, slender designs (common with heavy bullets) don't engage some of the barrels well.

To improve accuracy with the new bullets and cartridges, ArmaLite® is conducting a review of industry and military chamber configurations to see if a chamber design is available that can meet the needs of both the target shooter and the (far more numerous) informal shooter.

ArmaLite® absolutely cannot condone the use of handloads, whatever bullet is used. Use of handloaded ammunition voids the ArmaLite® warranty.



Leupold Tactical Scopes

NEW! Mark IV CQ/T 1-3x14mm

LAW1800 \$799.00

A revolutionary optical sight for tactical firearms, combining the strengths of a red dot sight and a variable-power rifle-scope. Use at 1x and it functions as a non-magnifying, illuminated sight. The Circle Dot reticle is a bold aiming point, ensuring instant target acquisition. Dial up to 3x and you can accurately engage targets at medium ranges.

Dot Size: 3 MOA at 3x, 9 MOA at 1x.



VARI-X III 3.5-10x40mm



Tactical LAW1000 \$567.00

- Matte Finish • Target Knobs
- 1/4 Minute Click Adjustments
- 1" Tube • Duplex Reticle



Long Range M1 .. LAW1033 \$777.00

- Matte Finish
- Turret Mounted Side Focusing
- 1/4 Minute Click Adjustments
- 30mm Tube • Duplex Reticle



Long Range M3 .. LAW1034 \$967.00

- Matte Finish
- Turret Mounted Side Focusing
- 30mm Tube • Duplex Reticle



Long Range M1 .. LAW1810 \$967.00

- Illuminated Reticle**
- Matte Finish
- Turret Mounted Side Focusing
- 1/4 Minute Click Adjustments
- 30mm Tube • Duplex Reticle

VARI-X III 4.5-14x40mm

Tactical LAW1010 \$615.00

- Matte Finish • Target Knobs
- 1/4 Minute Click Adjustments
- 1" Tube • Duplex Reticle



Mark IV M1

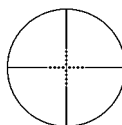
10x40mm LAW1020 \$1,178.00

- Matte Finish • Target Knobs
- 30mm Tube • 1/4 MOA Click
- Mil-Dot or Duplex

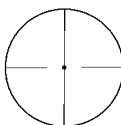


16x40mm LAW1022 \$1,178.00

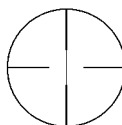
- Matte Finish • Target Knobs
- 30mm Tube • 1/4 MOA Click
- Target Dot, Mil-Dot or Duplex



Mil-Dot Reticle



1/4 Min Dot Reticle



Duplex Reticle

Leupold Mil-Dot Reticle

Can be substituted for an additional charge .. \$85.00



PENTAX®

Pentax Lightseeker and Whitetails Unlimited rifle scopes are designed and built to provide ultimate accuracy, durability, and optical performance whether you're shooting Big Game, Varmint, Small Game, Turkey or Target. With a range of reticles available including Mil-Dot, PENTAX offers something to suit all your hunting needs.

Pentax Whitetails Unlimited Rifle Scopes feature high quality optics with multi-coating on every surface. Super-sealed throughout to prevent moisture penetration. Lightweight and easy to mount. Plenty of eye relief. Accurate and easy adjustments - both for sight-in and focus. A better value in an all around hunting scope can't be found. The purchase of every Pentax Whitetails Unlimited rifle scope includes a free one-year membership in Whitetails Unlimited, and a portion of every Whitetails Unlimited scope purchase goes to the organization to support its conservation efforts.

Whitetails Unlimited 3x-9x 40mm



- 1 inch tube diameter
- Twilight Plex Reticle

Whitetails Unlimited TP 3x-9x 40mm
EX3247 **\$299.00**

Whitetails Unlimited 4.5x-14x 50mm



- 1 inch tube diameter
- Mil-Dot Reticle

Whitetails Unlimited MD 4.5x-14x 50mm
EX3248 **\$499.00**

Pentax Lightseeker-30 Rifle Scopes incorporate legendary Lightseeker optics housed in a 30mm tube. These are serious rifles scopes, developed for serious shooters or anyone who demands optimum optical and mechanical performance. All Lightseeker-30 scopes are available with Mil-Dot reticles. The Mil-Dot provides excellent accuracy for estimating range, as well as extremely useful reticle reference points for holding over the target or into the wind. All Lightseeker-30 scopes feature parallax correction, superior light gathering, crystal clear resolution, return to zero accuracy, adjustable 50mm objectives, dramatically increased adjustment range, the finest mechanical precision, 100% US made, Limited Lifetime Warranty, built to last.

Lightseeker-30 8.5x-32x 50mm



- 30mm tube diameter
- Mil-Dot Reticle
- Target knobs and sunshade included

Lightseeker-30 MD 8.5x-32x 50mm
EX3245 **\$729.00**

Lightseeker-30 6x-24x 50mm



- 30mm tube diameter
- Mil-Dot Reticle
- Target knobs and sunshade included

Lightseeker-30 MD 6x-24x 50mm
EX3244 **\$699.00**

Lightseeker-30 4x-16x 50mm



- 30mm tube diameter
- Twilight Plex Reticle
- Target knobs and sunshade included

Lightseeker-30 TP 4x-16x 50mm
EX3243 **\$599.00**

Lightseeker 3x-9x 50mm



- 1 inch tube diameter
- Twilight Plex Reticle
- Target knobs and sunshade included

Lightseeker TP 3x-9x 50mm
EX3246 **\$499.00**



Trijicon ACOG

ADVANCED COMBAT OPTICAL GUNSIGHT

Trijicon ACOG's are internally-adjustable, compact telescopic sights with tritium illuminated reticle patterns for use in low light or at night. The ACOG combines traditional precise distance marksmanship with close-in aiming speed. Designed specifically for M16 type rifles, ACOG's provide increased hit potential in all lighting conditions.

- Good for LE** - For .223 - ACOG 4x32 TA01, M16 Base, Red Reticle at Night LAW1100 **\$895.00**
- For .308 - ACOG 4x32 TA01B, M16 Base, Red Reticle at Night LAW1115 **\$895.00**
- For .223 - ACOG 4x32 TA01NSN, M4 Carbine, Yellow Center LAW1110 **\$1090.00**
- Good for LE** - For .223 - ACOG 3.5x35 TA11, M16 Base, Red Donut BAC LAW1120 **\$950.00**
- .223 or .308 - Compact ACOG 1.5x16 TA44-4, M16 Base, Amber Crosshair BAC LAW1130 **\$795.00**
- .223 or .308 - Flattop Receiver ACOG Adapter TA51 LAW1150 **\$72.00**

Trijicon TriPower

The Trijicon TriPower is the industry's first triple-illuminated sight. A failsafe firearms system that provides a fully illuminated reticle that's easy to see in virtually any lighting conditions, including partial or total darkness.

- TriPower Reflex TX30**, 30mm tube, Red Chevron Reticle LAW1143 **\$450.00**
- A.R.M.S. #10** for TriPower, 30mm Throw Lever Flattop Adapter EX1371 **\$64.95**



Trijicon Reflex II

Trijicon's enhanced Reflex II is the natural evolution in speed-with-precision shooting and true-color target acquisition. It gives you maximum accuracy and true-to-life targeting, instantly, without failure-prone batteries.

- Reflex II RX01**, 6.5 MOA, Amber Dot without mount LAW1140 **\$300.00**
- Reflex II RX06-10**, 12.9 MOA, Amber Triangle with M16 handle mount LAW1141 **\$450.00**
- Reflex II RX06-23**, 12.9 MOA, Amber Triangle with MIL-STD rail mount LAW1142 **\$450.00**
- M15™ Handle Mount Adapter RX10** LAW1160 **\$125.00**
- Flattop Receiver Mount Adapter RX14** LAW1170 **\$124.00**

Trijicon AccuPoint

AccuPoint Advanced Dual-Illuminated scopes offer optimum any-light shooting, with high transitional speed and pinpoint accuracy. With fiber-optic/tritium aiming-point illumination, the AccuPoint speeds target acquisition and extends available shooting hours. The dual-illumination fiber-optic system automatically adjusts aiming-point brightness to existing light conditions. The result: lightning-fast precision aiming in any light without failure-prone batteries.

- AccuPoint 3-9x40mm TR20**, Amber Triangle EX3000 **\$699.00**
- AccuPoint 3-9x40mm TR20R**, Red Triangle EX3001 **\$699.00**
- AccuPoint 1.25-4x24mm TR21**, Amber Triangle. EX3002 **\$699.00**
- AccuPoint 1.25-4x24mm TR21**, Red Triangle. EX3003 **\$699.00**



Self-Luminous Trijicon Night Sights Traser tritium gas-filled lamps protected by aluminum sleeves with inlaid white outline for daylight visibility. Stands up to years of recoil and harsh treatment.

- 3-Dot Set CP25**, for M15™/AR Type Rifles, all calibers LAW1180 **\$84.00**



ELCAN Optical Sight

One of the few optical products with true Class "A" Milspec quality assurance, fully proven through extensive field trials and environmental tests, designed to be quickly fitted to weapons incorporating a MIL-STD-1913 base, such as the ArmaLite® AR-10® and M15™ rifles. This rugged sight is comprised of an optical telescope and mount assembly designed to enhance the performance of tactical and combat weapons. The extra large exit pupil diameter allows fast target acquisition, and the brilliant optical performance turn dawn and dusk into day.



ELCAN Reticle

ELCAN SPECIFICATIONS

Dimensions

Length 160mm
 Width 55mm
 Height 72mm
 Weight 640g

Optics

Magnification 3.4x nominal
 Field of View 8 degrees nominal
 Apparent Field of View 27.2 degrees
 Entrance Pupil Diameter 28mm nominal
 Exit Pupil Diameter 8.5mm nominal
 Eye Relief 70mm nominal
 Light Transmission Exceeds 72%

Housing

Surface Finish Black anodized with chemical resistant rubber outer casing

Mount

Base Requirement Standard Weaver rail with cross-slots
 Windage and Elevation .25 mil detent zeroing adjustments
 Ballistic Compensation Dial calibrated for 200m to 800m in 100m increments

Reticle

Vertical Picket-type post with stadia line
 Horizontal Cant indicators
 Range Estimation Stadia line represents 76cm at 100m
 Illumination Replaceable tritium source illuminates tips of post & horizontals

ELCAN Optical Sight For .223 Caliber Rifles - EXO180 \$659.00
ELCAN Optical Sight For .308 Caliber Rifles - EXO181 \$679.00

ATN Ultra Sight

The UltraSight by ATN is a both eyes open, heads-up, rapid acquisition red dot sight. A revolutionary design lets you choose between four reticle patterns with simple twist of a knob. 11-position adjustment for brightness and an accurate windage and elevation system makes the UltraSight the best red dot sight on the market. Fits standard Weaver style base using two thumbnut tightened clamps. Battery operated, uses watch battery. Four reticles available.



Illuminated Reticle Sighting Device

ATN Ultra Sight - EX1440 \$220.00



Bushnell Sport Optics

Bausch & Lomb Elite 15x-45x 60mm Armored Spotting Scope

The Elite sets the standard for brightness, clarity and resolution of detail. Fully multi-coated optical surfaces provide maximum light transmission and enhanced image brightness. The small size is made possible by the advanced roof-prism optics. Waterproof and fogproof, with black canvas case.

61-1548P\$765.00



Bausch & Lomb PremierHDR 15x-45x 60mm Spotting Scope

The PremierHDR spotting scope features multi-coated optics for exceptional resolution, brightness and clarity. The innovative and well balanced aluminum and rubber composite design makes for low weight, portability and improved stability.

61-6000\$327.00



Bushnell Yardage Pro 1000 Laser Rangefinder

Using advanced digital technology, the Bushnell Yardage Pro 1000 takes the guesswork out of measuring distances. Delivers superb performance to targets from 10-1000 yards away, accurate to within one yard even if you're measuring in rain, snow or through foreground clutter like brush and branches.

EX1491\$550.00



A.R.M.S. INC. MOUNTING SYSTEMS

#38 - Swan® Sleeve



With integral spring loaded flip-up rear sight, for Mil-spec flat top rifles and carbines.

#38 S-Ex - Super Extended 14"	For .223 Caliber - EX1410	\$180.00
	For .308 Caliber - EX1411	\$190.00
#38 Ex - Extended Length 8.46"	For .223 Caliber - EX1405	\$165.00
	For .308 Caliber - EX1406	\$165.00
#38 Std - Standard Length	For .223 Caliber - EX1400	\$150.00
	For .308 Caliber - EX1402	\$160.00

#22 - 30mm Throw Lever Rings

Guaranteed repeat zero with easy on and off spring loaded throw levers.

#22 30mm Throw Lever Rings - Low	EX1380	\$99.00
#22 30mm Throw Lever Rings - Medium	EX1381	\$99.00
#22 30mm Throw Lever Rings - High	EX1415	\$99.00
#37 30mm to 1 Inch Ring Inserts	EX1385	\$32.00





A.R.M.S. INC. MOUNTING SYSTEMS

#39 - A2 Plus Mount

#39 - EX1390..... \$125.00

#2 - Carry Handle Mount

#2 - For .223 Cal. - EX1350..... \$59.95

#2 - For .308 Cal. - EX1351..... \$64.95

#5 - MultiBase

Quick detachable, multiple eye relief, spring loaded clamping bar, iron sight see thru, STANAG and dovetail rail fastening.

#5 - EX1355..... \$59.95

#6 - II Adapter Bracket

Converts NATO STANAG mount to Weaver type rail. Includes two securing screws.

#6 - EX1360..... \$58.00

#7 - III Adapter Bracket

Converts NATO STANAG scopes to Weaver type rail.

#7 - EX1362..... \$48.95

#15 - Trijicon Reflex Platform

Attaches to Mil-Std 1913 rails with repeat zero throw levers.

#15 - EX1416..... \$120.00

#15 Spacer - EX1417..... \$15.50

#17 - Single Lever Tri-Lock Platform Mount

#17 - EX1418..... \$77.00

#18 - M21/14 Mount

The #18 offers interchangeability of Day & Night Vision, in an ultra low profile, Mil-Std 1913 Rail. Made of 8620 case hardened steel.

#18 - EX1420..... \$190.00

#19a - Throw Lever Mount

Dovetail/STANAG throw lever mount.

#19a - EX1365..... \$140.00

#19acog - ACOG Channel Mount

Attaches to Weaver type rail mount with A.R.M.S. repeat zero throw levers.

#19acog - EX1366..... \$150.00

#20 - NV Throw Lever Mount

For AN/PVS-4 night vision scopes, fits M16 type mounts, A.R.M.S. dovetail rails.

#20 - EX1370..... \$150.00

#21 - STANAG 30mm Rings

#21 - EX1375... \$80.00



#22M68 - Aimpoint Comp Throw Lever Ring

Secure fit with repeat zero.

#22M68 - EX1425.... \$125.00

#22M68 Half Spacer - EX1426..... \$7.50

#22M68 Full Spacer - EX1427..... \$7.50

#40 - Stand Alone Flip-Up Rear Sight

Spring loaded, ensures repeat zero.

#40 - For .223 Caliber - EX1345..... \$95.95





FIRST STRIKE

First Strike Range Cart

This range cart is the best in the market today, it has everything you will need and more.

In addition to providing the convenience of hauling all your gear from 200 - 600 -1000 yards, it doubles as a seat to rest your weary limbs during a hard day at the range.



First Strike Range Cart - Red - EX2515 \$199.95

First Strike Range Cart - Black - EX2516 \$199.95

First Strike Range Cart Accessories

Shooting Mat Mount EX2517	\$4.99
Vertical Rifle Mount - Right EX2518	\$69.95
Vertical Rifle Mount - Left EX2519	\$69.95
Horizontal Rifle Mount - Upper EX2520	\$19.95
Horizontal Rifle Mount - Lower EX2521	\$19.95
Range Bag EX2522	\$29.95
Cooler Kit EX2523	\$34.95
3/4" Scope Mount Stand EX2524	\$19.95
1 5/16" Scope Stand EX2525	\$249.00
1" Scope Stand EX2526	\$199.00
Double Range Bag EX2527	\$54.95
1" Scope Stand Head EX2528	\$129.00
1 5/16" Scope Stand Head EX2529	\$129.00
Scope Mount for Ewing Stand - legs do not touch center EX2530	\$24.95



Creedmoor Sports



Service Rifle Shooting Stool Designed for the service rifle shooter and those desiring more room in the seat bag. The large seat bag has a partition down the middle with a YKK zipper opening on each side. A mag pouch on the outside holds two mags secured by a snap flap. A pocket next to the mag pouch accommodates the score book. A large pocket on the opposite side and end pockets are provided for maximum carrying space. The 1" diameter feet are capped with heavy duty crutch tips.

Service Rifle Shooting Stool - EX2115 **\$70.00**

Shooting Stool Accessory Pouch Detachable pouch designed for use with the shooting stool to provide additional carrying space. The Cordura nylon pouch is belloved for expansion and the flap is secured with Velcro - EX2100 **\$25.50**

Deluxe Fold-Up Shooting Mat Features a waterproof vinyl bottom and marine finished top with extended textured rubber elbow pads with double thick padding. Carrying handles allow other equipment to be carried within the folded up mat. Dimensions: 29.5" x 68".

Deluxe Shooting Mat - N042 **\$88.98**

Roll-Up Shooting Mat Features a waterproof vinyl bottom and marine finished top with textured rubber elbow pads. Dimensions: 29.5" x 68".

Roll-Up Shooting Mat - N040 **\$76.98**



Leather 20 Round Cartridge Holder

A convenient method for handling ammo when shooting from the standing position. Attaches to your shooting coat pocket by means of a flap which slips into the pocket. Holds 20 rounds of military ammunition plus 2 sighter rounds.

.308 Caliber, Brown Leather - EX2105 . . . **\$42.00** • **.223 Caliber, Black Leather** - EX2110. **\$42.00**



For more competition shooting products, including Deluxe Canvas Shooting Coats, Hi-Power and Full Finger Shooting Gloves contact Creedmoor Sports at 1-800-273-3366



3Bucc Brass Catcher

This high quality brass catcher is made with an all steel frame, durable cloth bag and has quick detachable ball detent pins. Each brass catcher comes with a high strength polymer mount. These catchers will hold up to 80, yes 80 empty .223 cases! This is a must have for the range! Configured for .223 cal. A2 receivers only.

Black
EX2135 . . . **\$64.00**

OD Green
EX0460 . . . **\$64.00**

Advantage Classic® Camo
EX3227 . . . **\$73.00**

Realtree Hardwoods® Camo - EX3226 **\$73.00**



Mark-A-Shot Target Markers



Mark-A-Shot 20ml markers feature a spring valve, leak-proof applicator designed to mark each shot with just the right amount of ink to cover each hit. Mark-A-Shot is available in four bright fluorescent colors that make it easy to see

shot groups at long distances. Each bottle makes about 12,000 impressions! Simply the most effective way to see immediate feedback between shot groups.

Mark-A-Shot Red - EX3217 **\$6.80**

Mark-A-Shot Pink - EX3218 **\$6.80**

Mark-A-Shot Orange - EX3219 **\$6.80**

Mark-A-Shot Green - EX3220 **\$6.80**



Sinclair Basic Shooting Rest

Ideal for use with ArmaLite®'s AR-50™!

Featuring powder coated ductile iron pedestal, stainless steel leg assemblies, stainless steel T-handles, stainless steel center column, stainless steel post, and a stainless steel handwheel. No rust, no plastic parts to break, and flawless performance. Three different elevation adjustments assure proper height and all three legs can be adjusted individually to compensate for uneven bench tops. A great all purpose rest for the shooter wanting a steady platform. Bag not included.

Sinclair Basic Shooting Rest - EX0307 \$392.00



Bag #18 Custom Bunny Ear Rear Bag

Made of high-grade leather and carefully stitched, this bag has a thick heavy double bottom so the back sits flat on the bench and is 2" taller than the standard rear back. This additional height makes most rifles easier to set up.

Bag #18 Custom Bunny Ear Rear Bag - EX0154 \$74.00

ArmaLite® Shooting Bench

This bench may not be pretty, but it is very functional and tough as nails. Constructed from a single 4' x 8' sheet of 3/4" plywood, this ambidextrous shooting bench disassembles easily for transport or storage. Order the detailed plans and cut and build it yourself, or order the pre-cut, unfinished, unassembled model.

Plans for ArmaLite® Shooting Bench - EX1651 \$10.00

Pre-Cut ArmaLite® Shooting Bench - EX1650 \$150.00

Please allow 30 days for Pre-Cut Bench



Versa-Pod Model 2T Bipod *The Ultimate Shooting Rest System*

The popular Versa-Pod Model 2T features rugged aircraft grade aluminum and steel construction with non-skid rubber feet. This bipod elevates bore height from 9" to 12" in six increments for prone or benchrest shooting. Includes universal mounting adapter with integrated hand-drest and sling swivel. Only for use with military style handguards.

Versa-Pod Model 2T - 150-013 \$77.75



Harris Ultralight Bipods

Versatile • Sturdy • Light • Fast

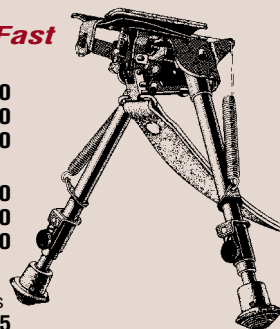
Series 1A2 - Solid Base

- BR, Bench Rest 6-9" Leg Height LAW2010 **\$70.00**
- LM, 6 Height Adjustments 9-13" LAW2000 **\$70.00**
- L, Bench or Prone 9-13" Leg Height LAW2020 **\$70.00**

Series S - Hinged Base

- BR, Bench Rest 6-9" Leg Height LAW2030 **\$99.00**
- LM, 6 Height Adjustments 9-13" LAW2040 **\$99.00**
- L, Bench or Prone 9-13" Leg Height LAW2050 **\$99.00**

Bipod Adapter Stud Needed with M15 type round handguards, fits without alteration, quick install, includes swivel LAW2060 **\$10.95**





Badger Ordnance Tactical Gear



Stabilizer Handguard

M-15™ Series rifles - EX0835 **\$135.00**
AR-10® Series rifles - EX0840 **\$150.00**



A2 Tactical Stock

With trap door and quick detach reversible swivel.

EX0715 **\$25.50**

Two Piece Scope Mount

Includes 30mm to 1" ring insert

EX0845 . . **\$222.00**



Tactical Latch

Quick access, even with a scope.
EX0170 **\$22.00**

Delta Pro Cheekpiece

By Cherokee Accessories

Delta style cheekpiece with sliding swivel, adds additional 1.5" height, slides on/off instantly.

EX0061 **\$94.00**



Stock Options Tactical Grip



Fits .308 or .223 caliber. Screw not included, you need to use existing screw.

EX0065 **\$69.50**

Ergo Grip AR Gapper

The Gapper fills the little void between the pistol grip and trigger guard in AR's. It clips in place in seconds, doesn't change the rifle silhouette and is made of solvent resistant polyurethane.

EX1550 **\$4.00**



Speedlock Systems SlipGrip



Improves trigger control by moving handgrip of AR type rifles back 1/2". Easy to install, complete with two screws, washer. For .223 caliber only.

EX1340 **\$50.00**

AR Sight and Muzzle Covers



Durable vinyl covers, protect sights, keep dirt out of the barrel and protect barrel crown. Competition shooters will want these to protect valuable zero settings. Includes front and rear sight covers and two muzzle guards for AR's with or without suppressors. Only fits NM rifle.

Matte black - EX0305 **\$16.00**

Yellow - EX0306 **\$16.00**

Cammenga Easyloader



No more sore thumbs! This uniquely designed plastic loader operates in one single slick movement.

For .308 caliber - EX0450 **\$50.00**

For .223 caliber - EX0455 **\$50.00**

ShooterPads



Gel-filled comfort shooting pads for knees and elbows. Features 1/2" of gel cushioning and a non-slip back to keep this product in it's place.

One pair - EX3215 **\$21.50**

ArmaLite® Gun Cable Lock

With 15" vinyl coated cable, this lock will fit most rifles, shotguns and handguns. Comes with Lifetime Guarantee.

EX0165 **\$4.00**



Buffer Technologies MagCinch



The MagCinch uses a patented system of nylon webbing to securely combine two magazines together into one rock solid unit for the fastest possible reloads.

For AR-10® 20 Round Magazines

Will not fit FAL mags.
EX3257 .. **\$21.95**



For M15™ 20 Round Mags

EX3255 .. **\$21.95**

For M15™ 30 Round Mags

EX3256 .. **\$21.95**

MagCinch Mag Pouches



**Holds Two
M15™ Mags
in MagCinch**
EX3253 .. **\$44.95**

**Holds Four
M15™ Mags
in MagCinch's**
EX3254 .. **\$44.95**

Spec-Ops WOLF-HOOK Lanyard

This is a two-piece lanyard that loops through the sling slot on CAR type buttstocks and anchors to the accessory loops on load bearing equipment. Because of its rear attachment point and shorter length, sight-to-target response time is decreased, a simple, effective means for securing a weapon.



Black - EX3210 .. **\$13.00**
OD Green - EX3211 .. **\$13.00**

Spec-Ops Ready-Fire Mode Mag Pouch



The Ready-Fire MODE buttstock mag pouch features a top mount for the sling which allows the wearer to suspend their weapon under the arm in the Ready-Fire Mode! The stock mounted mag pouch puts the ammo where you need it for hassle-free access.

M15™ - EX3208 .. **\$27.00**
M4™ Carbine - EX3207 .. **\$27.00**
AR-10® - EX3209 .. **\$27.00**

The Tactical Tailor Nylon Gear

Quick Release Tac-Sling

Ambidextrous
QRTS-A **\$35.00**



Stock Mag Pouch

Ambidextrous
SMP-A **\$34.00**



BlackHawk Tactical Ammo Cheek Pad

Padded non-slip cheek pad for absolute positive cheek weld with zippable pocket on the other side. Stays in place with 3 adjustable velcro straps and a fully adjustable velcro retaining strap to stop forward slip - EX0815 .. **\$34.95**



U.S.M.C. Mag Follower

Improves .223 caliber magazine function.

EX0078 .. **\$3.00**



U.S.M.C. Nylon Sling

Includes sling keeper, sling swivel, and buckle.
Black - EX0081 .. **\$10.00**
OD Green - EX0081G .. **\$10.00**



Turner Saddlery Custom Leather Slings



National Match Service Rifle Custom Leather Sling

This sling is cut from 1102 strap leather and has a 54" long strap. Features numbered adjustment holes and MILSPEC parkerized steel hardware. Used worldwide in service rifle competitions, recognized as being the best by many top shooters. The sling is stamped with the ArmaLite® logo!

NM Service Rifle Sling, Tan - EX0082 **\$60.50**
 NM Service Rifle Sling, Black - EX0083..... **\$60.50**

NEW! All Weather National Match Service Rifle Biothane® Sling

New CMP approved National Match Rifle sling made of Biothane weatherproof composite material. Legal for use in CMP, EIC and other Service Rifle competitions.

NM Biothane Rifle Sling, Black - EX3273 **\$49.95** • Green - EX3275 **\$49.95**

Police Tactical Rifle Custom Leather Sling

The same features as the National Match leather sling but 50" long, a length popular with Law Enforcement and military shooting teams. Also stamped with the ArmaLite® logo!

Police Tactical Rifle Sling, Tan - EX0084 **\$50.00** • Black - EX0085 **\$56.00**

Advanced Field Systems Slings



The System 1 Rapid Tactical Sling

From backpack to firing position as fast as 1.07 seconds • Secure flat on the back position - no flopping around • Hands are free to use other devices without sacrificing control • Rugged MIL SPEC construction • Low Profile, no telltale silhouette • Easier penetrations of heavy brush, does not interfere with climbing or rappelling • Made in the USA

System 1 Sling - EX0157 **\$53.00**

The System 6 Team Entry Sling

Designed for entry teams, provides simple, effective, reliable system for carry



and rapid transition from longgun to handgun, handgun to longgun and convenient back carry to high or low ready • For left- and right-handers • Transition initiated by simply letting go of the long-gun • Automatic indexing to the weak side • Both hands are free (after transition) for two-handed grip on the handgun • The long-gun can be secured on the back quickly and quietly for easy carry • The long-gun can be re-positioned in less than one second • Made in the USA

System 6 Sling - EX0156 **\$53.00**



The Claw Sling System



Durable non-slip soft plastic rubber pad molded directly onto sling webbing with Hush Stalker II sling swivels. In Black, Camo or OD Green.

Black - EX0441 **\$29.00**
 Camo - EX0442 **\$29.00**
 OD Green - EX0443 **\$25.00**

Hush Stalker II Sling Swivels



No squeak, no rattle sling swivel with quick release attachment.

Pair - EX0440 **\$8.00**

Bushwacker Optics Covers



These silent spring open optics covers are airtight, waterproof.

30mm Bell - Size #4 - EX0444 **\$7.99**
 32mm Bell - Size #5 - EX0445 **\$7.99**
 40mm Bell - Size #6 - EX0446 **\$7.99**
 42mm Bell - Size #7 - EX0447 **\$7.99**



Black Hills Ammunition



Black Hills selects only the best propellants, primers, cartridge cases and bullets combined with high quality manufacturing techniques and careful workmanship to produce consistently superior ammunition. This dependable quality and consistent performance is why ArmaLite® uses American made Black Hills ammunition to test fire our rifles!

New Match Rifle Ammo

Prices Include Shipping

.308 Caliber, 168 Grain BTHP, 500 round case	LBA1080	\$399.50
.308 Caliber, 168 Grain BTHP Moly, 500 round case	LBA1100	\$399.50
.223 Caliber, 68 Grain BTHP, 500 round case	LBA1000	\$274.50
.223 Caliber, 75 Grain BTHP, 500 round case	LBA1020	\$279.50
.223 Caliber, 75 Grain BTHP Moly, 500 round case	LBA1040	\$274.50
.223 Caliber, 55 Grain SP, 500 round case	LBA1060	\$254.50

In order to process your ammunition order, we must have a copy of your drivers license including photo and birth date. You can fax a copy to 309-944-6949, or mail to ArmaLite®, PO Box 299, Geneseo, IL 61254.



Plinking and informal target shooting can be more exciting with Thompson Targets. Printed on special papers to produce clean holes with less tearing. Choose from standard bullseye, silhouette sight-in, turkey, varmint, small game or even a life size buck. Hot Spot and Stick-Um Up targets allow shooters to improvise their own targets.

Large Scope Target, 10 pack - EX2400	\$5.75
Large Yellow Jacket Target, 10 pack - EX2405	\$5.75
Large Hot Shot Target, 10 pack - EX2410	\$5.75
Large Bright Lighting Target, 10 pack - EX2415	\$5.75
Large Sight Bright Target, 10 pack - EX2420	\$5.75
Large Black Widow Target, 10 pack - EX2425	\$5.75
Large Dead Center Target, 10 pack - EX2430	\$5.75
Large Woodchuck Target, 10 pack - EX2435	\$5.75
Large Prairie Dog Target, 10 pack - EX2440	\$5.75
Large Turkey Target, 10 pack - EX2445	\$5.75
Large Squirrel Target, 10 pack - EX2450	\$5.75
Deer Kill Zone Target, 10 pack - EX2455	\$5.75



Galati Tactical Rifle Cases

Heavily padded with a total thickness of 2 1/2" of closed cell foam. Also features an extra rib of padding by the nose area of the case. Features five extra magazine pockets as well as an accessory pocket. Extra long padded shoulder strap which attaches to the "D" ring. Fully lockable and will float with your rifle in it. Constructed from PVC, a clone to ballistic nylon. Fits guns with scope, 12" in height.



- 42" Tactical Rifle Case LAW3510 **\$63.00**
 45" Tactical Rifle Case LAW3540 **\$63.00**



Galati Range Bag

This superb bag features a large zippered main compartment, plus two large padded pockets (one on each side of bag). Clever internal divider separates your accessories by adjusting with Velcro. Includes a padded shoulder strap for carrying convenience. Made from PVC, a clone to ballistic nylon. Dimensions: 16" L x 6 1/2" W x 8" H.

- Range Bag LAW3550 **\$54.00**

Ace Case 54" Rifle Sleeve

This is a sleeve type, string tie case with one piece construction of 3/8" thick quality fabric. This is no wimpy sock, this rifle sleeve is padded to give your rifle that extra protection. Color subject to change.

- EXA020 **\$7.50**



SKB Two-Rifle Hard Cases

This is the case the ArmaLite® staff uses on its own business trips and demonstrations. Featuring a tough polymer shell, strong locking latches, and a full-length piano hinge, easy transport through airports is assured by the pull-handle and wheels. Both of these quality Hard Cases feature the unique "Bunk Bed" storage system which provides separate fully padded compartments for two rifles or shotguns. These cases are ATA 300 Class I rated with HDPE Plastic shells, bumper protected hardware, military grade flip handle, easy glide polymer wheels, solid die cast zinc locks and a weather resistant O-ring seal.



- 2 SKB-4009** - 40" x 9.5" x 6", two rifles up to 38"LAW3010 **\$169.99**
2 SKB-5009 - 50" x 9.5" x 6", two rifles up to 48"LAW3000 **\$199.99**



Bagmaster Cases

62" Heavy Weapon Case - AR-50™ Case

At last! A carry case long enough for your AR-50™! Works equally well with other large rifles. Opens wide for use as a shooting mat, with loops for cartridges and a special muzzle brake cozy to protect that ArmaLite® brake. Carry handles on the ends, as well as the middle so your best friend can help you carry your AR-50™ to the range.

- Black - HWC 62 BLK **\$165.00**
- OD Green - HWC 62 OD **\$165.00**

62" Standard Weapon Case - AR-50™ Case

An economical alternative for your AR-50™, this case features 3/4" high density closed cell foam interior lined with soft brushed tricot nylon and sewn wraparound handle.

- Black - EX1832 **\$80.00**

48" Heavy Weapon Case

AR-30M™ - AR-10(T)™ - M15A4(T)™

48" long, 13 inch tall, uses two cinch straps to secure weapon in place, padded inside pocket for mag pouches. Constructed of 600 denier polyester, closed cell foam core, YKK heavy-duty zipper with leather pull-tabs, leather handle wrap and ID label, padded inside zipper guard, one piece 2" wraparound handles, adjustable shoulder strap.

- Black - EX1800 **\$110.00**
- OD Green - EX1805 **\$110.00**

38" Premium Weapon Case

Designed to fit a variety of weapons, padded inside pocket for mag pouches. Constructed of 600-denier polyester, closed cell foam core, YKK heavy-duty zipper with leather pull-tabs, leather handle wrap, ID label, full length padded inside zipper guard, adjustable/removable shoulder strap.

- Black - EX1830 **\$80.00**

38" Tactical Weapon Case - AR-180B™ Case

Body constructed of 600-denier polyester, inner liner of soft but durable polyester, closed cell foam core, self-healing YKK zipper, four pleated external magazine pouches, adjustable shoulder strap.

- Black - TWC 38 BLKAL **\$55.00**



Bagmaster Magazine Pouches

These mag pouches hold three mags each and feature a Cordura nylon body with padded back. They are designed to velcro inside of the Heavy Weapons Case and the Premium Weapons Case, or can be attached to belts up to 2 1/2". Each magazine is covered with an individual velcro flap.

- .223 Caliber - 20 Round . . EX1700 **\$18.95**
- .308 Caliber - 10 Round . . EX1710 **\$18.95**
- .308 Caliber - 20 Round . . EX1705 **\$18.95**

Bagmaster Medium Gear Bag

This roomy gear bag measures 21" long x 10" deep x 8" wide with over 1680 cu. in. of space.

Body constructed of 600 denier polyester, double zipper top entry, YKK heavy-duty zipper with leather pull-tabs, leather handle wrap, ID label, pillow pockets, 1 hidden pocket, one piece 2" wraparound handles, adjustable shoulder strap and hard bottom panel.

- Black- EX1835 . . . **\$100.00**





Arms Cote

A durable transparent dry film that seals the exterior finish and lockworks of firearms, protects against rust and corrosion.

- Seals exterior for lasting protection of bluing
- Provides superior anti-corrosion protection
- Repels dirt, dust, moisture
- Dry, will not rub off or stain



Arms Cote 4 oz. Bottle - EXA050 . . . \$6.75

Bore Cote

A breakthrough high-tech fluoropolymer solution to clean, lubricate and condition the bore and action of firearms.

- Retards fouling that robs accuracy
- Removes fouling that other solutions leave behind
- Extends the life of your barrel, helps prevent jamming



Bore Cote 4 oz. Bottle - EXB050 . . . \$6.75



Sweet's 7.62 Solvent

This very high strength copper fouling remover is designed for patch use or by long brusher only. Use this after normal cleaning to remove and check for any copper deposits.

200 ml bottle - EX0298 . . . \$18.00

Butch's Bore Shine

Formulated to remove powder fouling easily, especially in the throat area. Removes copper fouling without being abrasive, can be used to soak a barrel for extended periods. A patch is all you need to clean your barrel.

16 oz. bottle - EX0297 . . . \$32.00



BoreSnake Gun Bore Cleaner

Fast, effective gun bore cleaner with built-in bore brush. Designed for one-pull through cleaning and is washable and reusable.

.223 Caliber
24011 . . . \$19.75

.308 Caliber
24015 . . . \$19.75

.50-.54 Caliber
24020 . . . \$19.75



Clenzoil Field & Range

A quality one-step cleaner, lubricant and rust preventative. No teflon or silicone, so it never gets gummy or sticky. Provides a thin, non-greasy coating. Also helps to preserve and protect wood and leather.

8 oz. bottle - CP0200 . . . \$10.50

RIG Universal

Excellent rust inhibiting product for long term storage, penetrates corrosion, shines blued gun surfaces.

1 oz. jar - EX0150 . . . \$3.95

3.75 oz. jar - EX0152 . . . \$6.00



USP Bore Paste

This non-embedding bore cleaner is used by many heavy bullet shooters as a cleaning agent to remove fouling.

2 ounce tube - EX0159 . . . \$7.00



Otis Cleaning Products

Otis Soft Pack Cleaning System



A complete muzzle-to-breach cleaning system, includes 32" memory-flex rod, 6" chamber cleaning rod, 2 forged brass slotted tips, 2 brass obstruction removers, rod connector, T-handle, .5 oz. bore cleaner and patches all packed in convenient case.

.223 Caliber - CP0070 . . . \$30.00

.308 Caliber - CP0080 . . . \$30.00

Otis #25 Brass Bore Brush

For 6mm, .243, 6.35mm, .25, .257, 6.5mm

CP1780 . . . \$2.00



Bore Tech Bore Stix



Spring steel with a non-softening, non-peeling coating which is hard enough to resist abrasive particles. The large cushioned handle has twenty two stainless bearings riding in machined races to provide almost effortless rotation for the brush or jag to follow the rifling.

- .223 Caliber, 36" - CP1935 **\$37.50**
- .308 Caliber, 48" - CP1937 **\$37.50**
- .338 Caliber, 52" - CP1940 **\$42.50**
- .50 Caliber, 60" - CP1945 **\$56.60**

Bore Tech Patch Jags



The finest brass and phosphor bronze produce premium quality jags. CNC machining ensures that proper tolerances are maintained. These extra long jags have dual sets of bearing rings.

- .223 Caliber - CP1915 **\$4.99**
- .308 Caliber - CP1920 **\$4.99**
- .338 Caliber - CP1925 **\$4.99**
- .50 Caliber - CP1930 **\$6.50**

Bore Tech Benchrest Blend



This is a bore cleaning compound designed with the competition shooter in mind. Offers fast removal of copper, lead and powder fouling without harm to barrel steel. Free of chlorides, nitrates and other corrosion accelerators.

- 4 oz. bottle - CP1990 **\$9.95**

Bore Tech Copper Remover



A fast acting formulation designed to clean bores without harm to barrel steels. Contains no chlorides, nitrates or other corrosion initiators. Provides thin film corrosion protection and removes corrosive residues from foreign/surplus ammo.

- 4 oz. bottle - CP1995 **\$8.50**

Bore Tech Patch Guide Plus



The Patch Guide Plus guides the patch or brush into the center of the bore while protecting the action and chamber. Made of CNC machined aluminum with a solvent resistant, stepped chamber seal.

- .223 Caliber - CP1980 **\$39.95**
- Tube Adapter - CP1985 **\$17.95**

Bore Tech Bore Mops

These are premium cotton mops to clean and dry the rifle bore after cleaning.

- .223 Caliber - CP1900 **\$1.75**
- .308/.338 Caliber - CP1905 **\$1.75**
- .50 Caliber - CP1910 **\$1.95**

Bore Tech Bore Brushes

Bore Tech uses the finest brass and phosphor bronze to produce the premium quality brushes. Precise CNC machining ensures that proper tolerances are maintained for proper fit.

- .223 Caliber - CP1955 **\$1.50**
- .308 Caliber - CP1960 **\$1.50**
- .338 Caliber - CP1965 **\$1.50**
- .50 Caliber - CP1970 **\$1.75**

Bore Tech Patch Hog



The Patch Hog collects all the used patches and solvent eliminating the mess normally associated with cleaning firearms. Simply screw an empty plastic water or soft drink bottle to the small end of the Patch Hog, then slip the large end onto the muzzle, your used patches accumulate inside the bottle

- .223 and .308 - CP1950 **\$16.95**



CJ Weapons Accessories

Chamber Maid

*Flexible
Rod
Kit
with
Chamber
Brush*



- M15™ Kit - EX3234 \$14.00
- AR-10® Kit - EX3235 \$16.00
- AR-50™ Kit - EX3236 \$26.00

Buttstock Cleaning Kit



A Must Have Cleaning Kit!

A complete cleaning kit designed to fit in the rifle buttstock for convenience and accessibility.

- .223 Caliber - EX3232 \$18.00
- .308 Caliber - EX3233 \$21.50

Bore Stay M15™ Bore Guide



Locks into the chamber to hold the guide and will not pull out when changing brushes, patches or jags. Solvent hole in handle allows you to add more solvent without removing brush or mop, and the o-ring seal keeps solvents out of the receiver.

- Bore Stay - EX3239 \$26.00

M15™ Gas Tube Cleaners

- Pack of 20 cleaners - EX3237 \$4.00
- Pack of 50 cleaners - EX3238 \$8.00

Pro-Shot Products

Copper Solvent IV

Pro-Shot's Copper Solvent IV is made specifically for copper and powder fouling, while also providing rust protection for your barrel. A highly effective way to clean barrels without the harsh and toxic chemicals used in traditional bore cleaners.

- 8 oz. bottle - CP1530 \$7.00



1 Step Gun Cleaner and Lubricant



An excellent cleaner and lubricant, repeated use protects the bore and lessens fouling/residue build-up. Helps to eliminate stiff actions, jamming and loosens rusted parts. Provides extra protection against rust and corrosion.

- 1 oz. bottle - CP1620 \$7.00
- 8 oz. bottle - CP1630 \$8.75

Universal Cleaning Rod

Rifle - Pistol - Shotgun



Includes three piece stainless steel rod, two brass patch holders, patches and 1 oz. bottle of 1 Step Cleaner & Lubricant, all packed in a convenient hangable container.

- 36", .27 Cal-10 GA - CP0455 \$36.00
- 36", .22 Cal-10 GA - CP0460 \$31.00
- 30", .22 Cal-10 GA - CP0440 \$31.00



Cleaning Rod Stop

- .22-.26 Cal. - CP0450 \$5.75
- .27 Cal. and up - CP0465 \$5.20

Pro-Shot .50 Caliber Custom Cleaning Kit

Great for your AR-50™, includes cleaning rod, solvent, patches, brushes and jag.

- CP0500 \$42.00

.50 Caliber Brass Jag

- CP0502 \$4.00

.50 Caliber Cleaning Brush

- CP0501 \$2.10



Ransom Master Mat



This high quality bench top work mat will help you organize and protect your work area. It is highly resistant to most petroleum-based solvents and fluids and keeps small parts from rolling away.

EX2000 **\$40.00**

AR Cleaning Rod Bore Guide



Delrin rod guide machined to fit receiver with "O" ring seal, provides complete protection for your action, barrel and cleaning rod and keeps solvents from leaking back into the action area.

.223 Caliber - EX0301 **\$27.50**

.308 Caliber - EX0302 **\$31.00**

AR Lug Recess Tool



The lug recess area collects a lot of grease, grit and powder residue. This tool utilizes 1" cotton rolls that are inserted into the tool head and retracted into a Delrin sleeve. The tool head is pushed into the lug recess area where the cotton roll expands. A couple of rotations and the area is clean. This is a great tool to complete your cleaning kit.

.223 Caliber - EX0155 **\$39.50**

.308 Caliber - EX0303 **\$44.00**

AR Cleaning Link



Made of Delrin and stainless steel this link separates upper and lower assemblies, but holds them securely allowing easy access for cleaning.

.223 Caliber - EX0299 **\$17.00**

.308 Caliber - EX0300 **\$17.00**

J. Dewey Cleaning Products



Dewey Cleaning Rod

Nylon coated with 360° swivelling handle, comes with one brass jag.

.223 Caliber - CP0110 **\$29.80**

.308 Caliber - CP0120 **\$29.80**

Chamber Cleaning Combo

Includes chamber rod and chamber brush.

.223 Caliber - EX3212 **\$17.00**



Dewey Bore Guide

Guides cleaning rod, o-ring seal keeps oil and debris from coming back into action.

.223 Caliber - CP0160 **\$20.00**

.308 Caliber - CP0170 **\$22.95**



Dewey Professional Brass Jags

Fit Dewey Cleaning Rods

22J for .223 Caliber - CP0130 **\$3.00**

30J for .308 Caliber - CP0140 **\$3.00**

Frequently Asked Question!

Why does ArmaLite® offer three types of barrels – chrome moly, chrome lined and stainless steel?

Because each barrel has advantages suited to different uses.

ArmaLite®'s chrome moly barrels have excellent internal surface finishes, and offer excellent accuracy for a reasonable price. Chrome lined barrels offer excellent corrosion protection and slightly longer life expectancy, but are more expensive than unchromed barrels. In addition, the process of electro-polishing the barrels, and the chroming process itself, tend to reduce accuracy somewhat. Stainless steel is easy to process to fine surface finishes, and provides moderate corrosion resistance.

Chrome moly is thus used for Eagle Arms™ standard rifles, for good accuracy for beginners at a low price. ArmaLite® A2 and A4 rifles, in either .223 or .308 caliber normally are produced with chrome lined barrels for hard service use under adverse conditions, with stainless steel as an option. All ArmaLite® match grade rifles, the Ts and National Match rifles, are made with stainless steel barrels for superior accuracy and decent corrosion resistance.



Gunsmithing Tools

A great selection of quality tools, reasonably priced!

4 Oz. Ballpeen Hammer EX2240 **\$42.00**

Superb balance, fiberglass handle with full sized cushioned rubber grip for control, handles made from unbreakable, impregnated fiberglass. Nicely shaped half round ballpeens. SPECS: Hardened steel head, fiberglass shank, rubber handle, approximately 11" long.

3/4" Nylon/Brass Hammer EX2280 **\$26.00**

Tough nylon and soft brass in the right size. Smaller diameter head lets you see more of what you're trying to hit, giving better control. The lighter 4 oz. weight is our favorite for the bulk of our rifleshooting work. Tough long-lasting, non-marking extruded nylon and turned brass heads are easily replaced when they wear out or become deformed. SPECS: 3/4" (19mm) diameter faces. 10" (25 cm) hickory handle. Weighs approx. 4 oz. (113 g).

Allen Wrench Set EX2245 **\$9.75**

Compact, easy-to-grip fold-up Allen wrench set features chamfered tips for easier insertion into screw heads. Hex set in nine sizes, hardened steel, with high impact synthetic case.

Benchmat EX2000 **\$40.00**

Flexible, non-skid bench mat lays flat, keeps parts together. Such a high coefficient of friction that it actually feels sticky! Parts and pieces can't roll and the molded-in trays and raised rims keep things separated. Made from a flexible, plastic/rubber. Roll, fold or crease it, it won't take a set. Resists most solvents, light grey color makes parts stand out, cleans up easily.

Starret Pin Punch Set EX2260 **\$67.00**

Precision ground from specially selected tool steel, hardened and highly polished, the Starret pin punches are well proportioned and beautifully finished. Blued, knurled grip area individually marked for size. Set of eight comes in handy, fitted, round hardwood bench box.

Roll Pin Punch Set EX2270 **\$46.00**

With these pins becoming so common in guns, having the right punches to remove them is a necessity. These patented punches are the only way to remove and reuse roll or spring pins without causing glaring damage to the pins. Solid steel punches, with long, parallel-ground points and knurled section for better grip. Kit includes one each of seven sizes. SPECS: #1, 1/16" (1.6mm); #2, 5/64" (2mm); #3, 3/32" (2.4mm); #4, 1/8" (3.2mm); #5, 5/32" (4mm); #6, 3/16" (4.8mm); #7, 7/32" (5.5mm).

Roll Pin Holders Set EX2275 **\$66.50**

Hollow ended starter punches for roll pins, holds roll pins perfectly aligned for starting correctly. Especially good on the tiny, tough-to-grab ones, or those in tight places. Set includes one each in four sizes. SPECS: 1/8" (3.2mm) diameter - 5" (12.7cm) long. 3/32" (2.4mm), 5/64" (2mm), 1/16" (.40mm) diameter - 4 1/2" (11.4cm) long.

Screwdriver Set EX2250 **\$49.50**

Set of eight screwdrivers with wooden handles and heavy square shanks, made from standard keystone bit screwdrivers with tip of bit ground parallel for short distance back to give better fit. Features a hex shank, hardened tips, hardwood handle and nickel plated ferrule. Made in the USA, guaranteed not to break or chip.

Vise Grip - Small EX2255 **\$20.00**



M15™/M16 Balance Wedge



6 pound lead
buttstock weight,
precision fitted for easy installation.

EX0009 \$28.00

Handguard Weight EX1600..... \$25.00

AR10®/M15™ Vise Jaw

EX1615 \$28.00



**Vise Jaw
Mag Well Block**

EX1610..... \$24.00

Forster Headspace Gauge Set

.223 Caliber - EX0011 \$82.50

.308 Caliber - EX0012..... \$82.50

Delta Ring Removal Tool

CP2010..... \$42.00

A2 Front Sight Tool



For .223 and .308 Caliber

EX0110 \$7.95

Front Sight Alignment Tool



Precision machined from solid steel

Carbine - EX0112 \$58.00

Intermediate - EX0113 \$58.00

Rifle - EX0114..... \$58.00

Heavy Duty Barrel Wrench



.223 Caliber - EX0700..... \$37.00

.308 Caliber - EX0705..... \$37.00

ArmaLite® Gunsmithing Labor Charges

Install ambi-safety (price includes parts and labor).....	\$45.00
Install post-ban carbine buttstock assembly (price includes parts and labor).....	\$125.00
Install teardrop forward assist (vs. round).....	\$25.00
Install lower receiver parts kit on a lower.....	\$45.00
Install lower receiver parts kit with National Match trigger on a lower.....	\$65.00
Install recoil check on a stainless steel barrel (price includes parts and labor).....	\$80.00
Install recoil check on a chrome lined barrel (price includes parts and labor).....	\$80.00
Install picatinny gas housing on a pre-ban (price includes parts and labor).....	\$75.00
Install picatinny gas housing on a post-ban (price includes recoil check, picatinny rail and labor).....	\$120.00
Install fiberglass handguard tube on a stainless steel barrel (price includes new recoil check, fiberglass tube and labor).....	\$165.00
Install fiberglass handguard tube on a chrome lined barrel (price includes new recoil check, fiberglass tube, recoating barrel and labor).....	\$195.00
Install a barrel.....	\$35.00
Install National Match sights.....	\$25.00
Install National Match free floating barrel sleeve (price includes NM barrel sleeve, new recoil check, NM handguards and labor).....	\$250.00
Install National Match two stage trigger group (price includes NM trigger and labor).....	\$215.00
Furniture exchange (shipping and handling charge only).....	\$15.00
Labor per hour.....	\$45.00

Labor charges above are in addition to the cost of parts, where applicable.

Swapping Top Ends If a customer wishes to swap their top end for another, the following applies:

1. The swap is subject to ArmaLite®'s inspection of the top end, it must be deemed new and we must be able to resell it.
2. There is a \$45 swap fee per top end, and the customer pays all shipping charges.
3. The customer must also pay any difference in cost between the top ends.
4. We do not give refunds if the customer is swapping for a top end of lesser value.



FORSTER



Co-Ax Primer Seater

Allows perfect seating, reliable ignition and reduced misfires with E-Z-Just jaws and built in primer flipper tray. No additional shellholders required.

EX2204 \$97.00



Forster Exclusive Co-Ax Press

The simplest, most powerful and most accurate press on the market, bar none.

- Snap-in and snap-out die changing, change from sizer die to seater die in two seconds!
- A positive spent primer catcher system which passes all spent primers and dirty carbon through a tube and into a container, keeps all working parts free of dirt and abrasives
- Dual floating guide rods ensure perfect alignment
- Delivers perfect alignment of the die and the case because the shell holder jaws are designed to float with the die
- No frame supports or swinging primer arms to interfere or cause an obstruction
- Accepts any standard 7/8" x 14 reloading die, some with existing locking rings

Co-Ax Press - EX0919 \$298.00

Inside-Outside Deburring Tool

This double-ended, multi function piece of equipment can be used by hand, lathe or attached to the special DBT base. Handles all cartridges from .17 to .45 caliber.

EX0916 \$22.00



DBT Base

Special base for the Inside-Outside Deburring Tool, adds speed and saves wear and tear on your hands!

EX2205 \$34.95



.50 BMG Case Trimmer

Designed specifically to meet the reloading needs of the .50 BMG shooter.

This quality case trimmer does not require a collet and comes with pilot and rim holder.

EX0430 \$90.00

Case Trimmer Base - .223 - EX2214 \$22.15

Case Trimmer Base - .243 - EX2213 \$22.15

Case Trimmer Base - .308 - EX2212 \$22.15

Case Trimmer Kit

Comes complete with case holding collets and trim guide pilots which satisfy the needs of most rifle handloaders.

EX2215 \$128.00

Case Trimmer Accessory Case

This rugged and lightweight 9" x 5" case has slots to organize and protect all your case trimmer accessories.

EX2206 \$15.00



.308 Win Ultra Die Set

Includes full length sizing die and Ultra Micrometer seater die, smooth as silk adjustments for precise measurements the very first time.

.308 Win - EX0918 ... \$62.00



Superfast Bullet Puller

Extracts the most obstinate bullets fast and easy, works well in virtually any reloading press. Pulls all jacketed bullets including tough lacquered G.I. armor piercing bullets.

.223 - EX2203 \$19.00

.243 - EX2202 \$19.00

.308 - EX0917 \$19.00



Hand Outside Neck Trimmer

A durable, smooth cutting carbide with easy-to-adjust micrometer adjustment knob and precision ground pilots.

.50 BMG - EX2210 \$81.50

.223, .243, .308 - EX2211 \$81.50



Neck Reamer

Mounts in the cutter of a Forster Case Trimmer in place of the pilot and removes excess brass from the neck walls.

.223 - EX2209 \$26.50

.243 - EX2208 \$26.50

.308 - EX2207 \$26.50

7" Bor-O-Lite

Crystal clear Lucite rod conducts light anywhere it's needed. The rod can be heated and bent as much as 45° and turned down to small diameters. Can be re-heated and re-bent many times without loss of light carrying properties. EX2201 \$22.00



Gold Inlay Filling Kit

Handy kit fills engraving and lettering on firearms, includes fine bronze powder, liquid base sealer, cloth application patches and instructions. Includes enough material for five to ten guns. EX2200 \$15.00



Hornady Lock-N-Load AP

This automatic progressive reloading press combines precision engineering with an innovative design. The result is the easiest, ready-to-use reloading press you can buy. Just add dies and start loading consistently accurate rounds. The Lock-N-Load bushing system will change forever the way you switch from one caliber to another. What used to be your most time-consuming task can now be done with the simple flick of the wrist. Lock-N-Load technology allows you to stop loading, change dies and start loading another caliber in a matter of seconds.

For .50 BMG - EX0400 **\$470.00**

Hornady Lock-N-Load Powder Measure

Now changing powder meters is as easy as a push of a button. Complete with the mounting plate and standard metering insert.

EX0401 **\$85.50**

We carry the full line of Hornady Reloading Equipment and Supplies, please call for more information!



VibraShine Vortex Brass Tumblers

Vortex Tumblers feature heavy duty polyethylene bowls and impact resistant plastic bases and vibrating platforms. They are powered by a strong 1/30 HP motor which is thermally protected, fan cooled and turns on sealed ball bearings.

Model VS-20 - Features a three quart bowlEX3229 **\$94.00**

Model VS-30 - High volume model, six quart capacityEX3230 **\$122.00**

Shooting Chrony

Taking the guess out of success!

SHOOTING CHRONY measures the speed of bullets, arrows, shotgun and airgun pellets, paintballs, etc. from 30/fps. to 7000/fps. with better than 99.5% accuracy. A chronograph completes your reloading needs and can go with you anywhere. Every SHOOTING CHRONY is made of 20 gauge steel, weighs less than 2 1/2 lbs., and is powered by one 9 Volt alkaline battery and is equipped with a large LCD-readout.

Alpha Master Chrony

- Provides numbered shot velocities
- ONE String, from 2 to 32 shot memory
- Velocity stays on display until you shoot again
- Stereo Jack for optional Remote or Printer
- Retrieval of shot velocity measurements
- Delete individual shots from memory (with automatic adjustment of Statistics)
- Measures High, Low and Average Velocities, Extreme Spread and Standard Deviations



Alpha Master Shooting Chrony - EX0304 **\$219.90**



The Competitive AR15

By Glen D. Zediker A complete and detailed study of our newest precision rifle sensation: the super accurate AR15. This rifle has taken the world of NRA High Power Rifle by storm, winning every individual National NRA Service Rifle Championship for the past five consecutive years, and, of course, G. David Tubb and his SR-25 won Camp Perry in 1997. Find out why: all the answers are in this book. This book is nearly 300 pages and has over 300 photos, illustrations, and tables, 7x10 size.

MA1072 **\$50.00**



The AR-15 Complete Owner's Guide

By Walt Kuleck with Scott Duff This book provides the prospective, new or experienced AR-15 owner with the in-depth knowledge needed to select, configure, operate, maintain and troubleshoot their rifle. The Guide covers history, applications, details of components and subassemblies, operating, cleaning, maintenance, and future of perhaps the most versatile rifle system ever produced. A comprehensive Colt model number table and pre-/post-ban serial number information are included. Soft cover, 212 pages, 164 photographs and line drawings. EX0087 **\$32.50**

More Titles from Scott A. Duff Publications:

The M1 Garand: World War II, Vol. 1, by Scott A. Duff - EX0087-10 \$49.00

The M1 Garand: Post World War II, Vol. 2, by Scott A. Duff - EX0087-9 \$31.00

The M1 Garand: Serial Numbers & Data Sheets, by Scott A. Duff - EX0087-8 \$14.00

The M1 Garand Owner's Guide, Vol. 1, by Scott A. Duff - EX0087-7 \$28.00

The M1 Carbine Owner's Guide, Vol. 2, by Larry Ruth with Scott A. Duff - EX0087-5 \$31.00

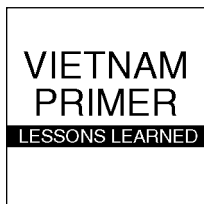
The M14 Owner's Guide and Match Conditioning Instructions, Vol. 3, by Scott A. Duff and CWO John M. Miller - EX0087-4 \$24.00

Arms For The Nation - Springfield Longarms, Ed. by David C. Clark - EX0087-6 \$12.00

American Military Bayonets of the 20th Century, by Gary M. Cunningham - EX0087-3 \$20.00

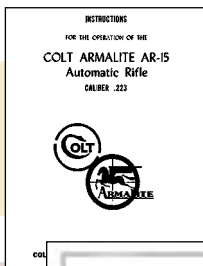
Technical Manual 9-270 U.S. Rifle, Cal. 30, M1903A4, War Department - EX0087-2 \$7.00

U.S. Army Air Service Wing Badges - Uniforms & Insignia 1913-1919, by Terry R. Morris, Major USA, Ret. - EX0087-1 \$40.00



Vietnam Primer

Lessons Learned
Dept. of the Army
MA1065 . . . **\$6.00**



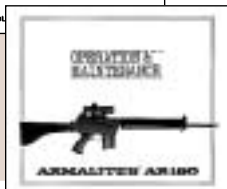
Colt ArmaLite AR-15

Operation Instructions
Reprint of historic early manual
Colt Patent Fire Arms Mfg.® Co. Inc.
MA1003 . . . **\$10.00**



ArmaLite Operating and Maintenance Manual

Rifle, 5.56-MM, AR-18
Used in 60's Army trials
MA1048 . . . **\$5.00**



ArmaLite AR-18

Operation and Maintenance
MA1090 **\$8.00**



Creedmoor Rifle Data/Score Book

Enlarged target overlays, simple check-off format.
MA1100 . **\$13.00**



ArmaLite AR-18

5.56mm Combat Rifle, Operation and Maintenance
MA1095 **\$8.00**

TM 9-1005-210-12
DEPARTMENT OF THE ARMY TECHNICAL MANUAL

OPERATOR OR ORGANIZATIONAL
MAINTENANCE MANUAL
INCLUDING REPAIR PARTS AND SPECIAL TOOLS LIST

CARBINE, CALIBER .30: M1, W/E
(1005-670-7670)
CARBINE, CALIBER .30: M2, W/E
(1005-670-7673)

TM 9-1005-210-12
Operator's Maintenance
Carbine, Caliber .30: M1,
W/E; M2, W/E
MA1015 . . . \$6.00

TM 9-1005-210-35
DEPARTMENT OF THE ARMY TECHNICAL MANUAL

DS AND GS MAINTENANCE MANUAL
INCLUDING REPAIR PARTS AND SPECIAL TOOLS LIST

CARBINE, CALIBER .30: M1, W/E
(1005-670-7670)
CARBINE, CALIBER .30: M2, W/E
(1005-670-7673)

TM 9-1005-210-35
DS & GS Maintenance
Carbine, Caliber .30: M1,
W/E; M2, W/E
MA1016 . . . \$6.00

TM 9-1005-222-12
DEPARTMENT OF THE ARMY TECHNICAL MANUAL

OPERATOR OR ORGANIZATIONAL
MAINTENANCE MANUAL
INCLUDING REPAIR PARTS AND SPECIAL TOOLS LIST

RIFLE, CALIBER .30: M1, W/E
(1005-674-1425)
RIFLE, CALIBER .30: M1C (SNIPER'S) W/E
(1005-674-1430)
RIFLE, CALIBER .30: M1D (SNIPER'S) W/E
(1005-674-1434)

TM 9-1005-222-12
Operator's Maintenance
Rifle, Cal. .30: M1, W/E;
M1C, (Sniper's) W/E;
M1D, (Sniper's) W/E
MA1012 . . . \$6.00

TM 9-1005-222-35
DEPARTMENT OF THE ARMY TECHNICAL MANUAL

DS AND GS MAINTENANCE
MANUAL INCLUDING REPAIR PARTS AND SPECIAL TOOLS LIST

RIFLE, CALIBER .30: M1, W/E (1005-674-1435)
RIFLE, CALIBER .30: M1C (SNIPER'S) W/E
(1005-674-1430)
RIFLE, CALIBER .30: M1D (SNIPER'S) W/E
(1005-674-1434)

TM 9-1005-222-35
DS & GS Maintenance
Rifle, Cal. .30: M1,
W/E; M1C, (Sniper's)
W/E; M1D, (Sniper's)
W/E - MA1013 . \$6.00

TM 9-1005-249-14
DEPARTMENT OF THE ARMY TECHNICAL MANUAL

OPERATIONAL, MAINTENANCE, SERVICE AND REPLACEMENT PARTS

RIFLE, 5.56-MM, M16;
RIFLE, 5.56-MM, XM16E1;
AND LAUNCHER, GRENADE,
40-MM, XM148

TM 9-1005-249-14
Operation Maintenance
Rifle, 5.56-MM, M16 Rifle,
5.56-MM, XM16E1
Grenade Launcher
MA1001 . . . \$9.00

TM 9-1005-223-34
DEPARTMENT OF THE ARMY TECHNICAL MANUAL

DIRECT SUPPORT AND GENERAL SUPPORT MAINTENANCE MANUAL
INCLUDING REPAIR PARTS AND SPECIAL TOOLS LIST

RIFLE, 7.62-MM, M14, W/E
(1005-599-1270)
RIFLE, 7.62-MM, M14A1, W/E
(1005-597-5910)
RIFLE, M2
(1005-711-6222)

TM 9-1005-223-34
DS & GS Maintenance
Rifle, 7.62-MM, M14, W/E;
M14A1, W/E Bipod, Rifle, M2
MA1027 . . . \$8.00

TM 9-1005-205-12
DEPARTMENT OF THE ARMY TECHNICAL MANUAL

OPERATOR OR ORGANIZATIONAL
MAINTENANCE MANUAL INCLUDING REPAIR PARTS AND SPECIAL TOOLS LIST

RIFLE, CALIBER .30: M1903A4,
(SNIPER) W/E
(1005-674-1432)

TM 9-1005-205-12
Operator's Maintenance
Rifle, Cal. .30: M1903A4,
(Sniper) W/E
MA1052 . . . \$8.00

TM 05538C-23&P/2
U.S. MARINE CORPS TECHNICAL MANUAL

ORGANIZATIONAL AND OPERATIONAL
MAINTENANCE MANUAL
(INCLUDING REPAIR PARTS AND SPECIAL TOOLS LIST)

RIFLE, 5.56-MM, M16A2 W/E
NEW MODEL 5.56-MM

OCTOBER 1994

TM 05538C-23&P/2
Rifle Maintenance
5.56-MM, M16A2, W/E
MA1000 . . . \$17.00

TM 9-1005-211-35
DEPARTMENT OF THE ARMY TECHNICAL MANUAL

DIRECT SUPPORT, GENERAL SUPPORT,
AND SPECIAL SUPPORT MAINTENANCE
INCLUDING REPAIR PARTS AND
SPECIAL TOOLS LIST


PISTOL, CALIBER .45, AUTOMATIC, METAL,
WITH HOLSTER, HIP, W/E
(1005-673-7965)
PISTOL, CALIBER .45, AUTOMATIC, METAL,
WITH HOLSTER, SHOULDER, W/E
(1005-695-2025)

TM 9-1005-211-35
DS & GS Maintenance
Pistol, Caliber .45,
Automatic: M1911A1
MA1041 . . . \$5.50

TM 9-1275
ORDNANCE MAINTENANCE
U. S. RIFLES, CAL. .30
M1, M1C (SNIPER'S),
AND M1D (SNIPER'S)

TM 9-1275
Ordnance Maintenance
U.S. Rifles, Cal. .30
M1, M1C (Sniper's)
M1D (Sniper's)
MA1011 . . . \$10.00


MARKSMANSHIP TRAINING UNIT



SERVICE PISTOL
MARKSMANSHIP MANUAL

U.S. Marine Corps
Marksmanship Manual,
Service Pistol
MA1080 . . . \$18.00

U. S. ARMY WEAPONS COMMAND
RESEARCH & ENGINEERING DIRECTORATE
SMALL ARMS SYSTEMS LABORATORY



TECHNICAL NOTES
SMALL ARMS WEAPONS DESIGN

US Army
Weapons Command
Small Arms Design
Detailed engineering
information
MA1085 . . . \$12.50

All Tech Manuals are printed in their full original size.

ARMALITE® LOGO - CLOTHING & GIFTS



Heavy Cotton Sweatshirt

Khaki	LG - EXC227	\$26.00
	XL - EXC228	\$26.00
	XXL - EXC229	\$26.00
Grey	LG - EXC217	\$26.00
	XL - EXC218	\$26.00
	XXL - EXC219	\$26.00
Navy	LG - EXC035	\$26.00
	XL - EXC036	\$26.00
	XXL - EXC037	\$26.00



ArmaLite® Logo Cap

Hunter Navy Bill	EXC002	\$12.00
Khaki Navy Bill	EXC132	\$12.00
Camo Camo Bill	EXC003	\$12.00



Long Sleeve T-Shirt

Navy	LG - EXC020	\$15.50
	XL - EXC021	\$15.50
	XXL - EXC022	\$15.50
Green	LG - EXC023	\$15.50
	XL - EXC024	\$15.50
	XXL - EXC025	\$15.50
Grey	LG - EXC026	\$15.50
	XL - EXC027	\$15.50
	XXL - EXC028	\$15.50
Khaki	LG - EXC224	\$15.50
	XL - EXC225	\$15.50
	XXL - EXC226	\$15.50



Short Sleeve T-Shirt

Green	LG - EXC008	\$12.00
	XL - EXC009	\$12.00
	XXL - EXC010	\$12.00
Navy	M - EXC200	\$12.00
	LG - EXC201	\$12.00
	XL - EXC202	\$12.00
	XXL - EXC203	\$12.00
Grey	M - EXC210	\$12.00
	LG - EXC211	\$12.00
	XL - EXC212	\$12.00
	XXL - EXC213	\$12.00
Khaki	M - EXC220	\$12.00
	LG - EXC221	\$12.00
	XL - EXC222	\$12.00
	XXL - EXC223	\$12.00
Cardinal Red	M - EXC230	\$12.00
	LG - EXC231	\$12.00
	XL - EXC232	\$12.00
	XXL - EXC233	\$12.00
Black	XL - EXC251	\$12.00
	XXL - EXC252	\$16.00
	XXXL - EXC253	\$19.00





AR-50™ Freedom Cap

White Navy Bill EXC255 \$12.00



AR-50™ Freedom T-Shirt

Featuring the ArmaLite®/Flag logo on the front and the AR-50™/Flag "Please excuse the noise... It's the sound of freedom!" on the back.

White LG - EXC014 \$12.00
 XL - EXC015 \$12.00
 XXL - EXC016 \$12.00
 XXXL - EXC017 \$12.00



ArmaLite® Wall Clock

11" Diameter - EX0620 \$18.00



**ArmaLite®
 Coffee Mug**
 EXC072 \$5.00

ArmaLite® Precision Box

EX0610 . . . \$3.00



ArmaLite® Range Towel

Green - EXC300 . . . \$4.00



ARMALITE® ORDERING INFORMATION

Orders Accepted by Phone, Fax, Mail, E-mail or at our Website . . .

All payments should be by Visa, MasterCard, Discover, Cashiers Check or Money Order unless company checks or credit have been pre-approved by ArmaLite®. Illinois residents add 6.5% Sales Tax or provide State Tax number.

Take advantage of **SECURE ON-LINE ORDERING** at www.armalite.com

FFL Holders . . .

We require a current, hand signed in ink FFL before processing dealer orders. Please have your ArmaLite® account number ready when ordering. The first three and last five digits of your FFL number is your ArmaLite account number.

Additional Terms and Conditions . . .

These instructions do not contain all of the terms and conditions set forth by ArmaLite®. Please refer to ArmaLite® Inc. Terms and Conditions of Sale, available for no charge from ArmaLite® upon request. **All prices, specifications, terms and conditions are subject to change without notice.**

NOTE: Any merchandise returned after 30 days is subject to a \$25.00 or 15% restocking fee, whichever is greater. Please refer to our Terms and Conditions of Sale for additional return information.

Letter of Authenticity on your ArmaLite® rifle certifying rifle serial number, history, ship date and factory designation - LOA001 **\$25.00**

Shipping Charges . . .

Shipping charges are estimates only, and apply to pre-paid orders. Rates do not apply to packages over 20 pounds. Next Day and Second Day Air packages require an additional charge, call for pricing. Current UPS COD fee \$6.00. UPS no longer accepts cash in any amount. ArmaLite® ships all packages "Adult Signature Required". All totals figured in U.S. currency. Prices subject to change without notice.

ORDER TOTAL	ADD FOR SHIPPING
\$0 - \$25.00	\$6.95
\$25.01 - \$50.00	\$7.95
\$50.01 - \$100.00	\$9.95
\$100.01 - \$150.00	\$12.95
\$150.01 - \$200.00	\$14.95
\$200.01 - \$300.00	\$16.95
\$300.01 - \$400.00	\$18.95
\$400.01 - \$500.00	\$21.95
\$500.01 - AND OVER	\$25.95

ArmaLite® Inc.

P.O. Box 299 / Geneseo, IL 61254

ORDERS/INFORMATION:

Hours: 8:00-4:30 CST Monday thru Friday

Orders: 1-800-336-0184

Phone: 309-944-6939 / Fax: 309-944-6949

Website: www.armalite.com / E-mail: info@armalite.com

MILITARY & POLICE SALES

P.O. Box 340, Campbellsburg, KY 40011

Phone: 502-532-0300 / Fax: 502-532-0775 / E-mail: toppc@armalite.com

ARMALITE® ORDERING INFORMATION

ARMALITE® INC. P.O. Box 299 • Geneseo, IL 61254

Orders: 1-800-336-0184 • Tel: 309-944-6939 • Fax: 309-944-6949

Website: www.armalite.com • E-mail: info@armalite.com

ORDERED BY:

Name _____ FFL Number _____

Street Address _____

City _____ State _____ Zip _____

Phone Number _____ Fax Number _____

PAYMENT METHOD:

Cashiers Check Money Order COD

Open Account (Must Be Pre-Approved by ArmaLite®)

VISA MASTERCARD DISCOVER

Card No. _____ Expiration Date _____

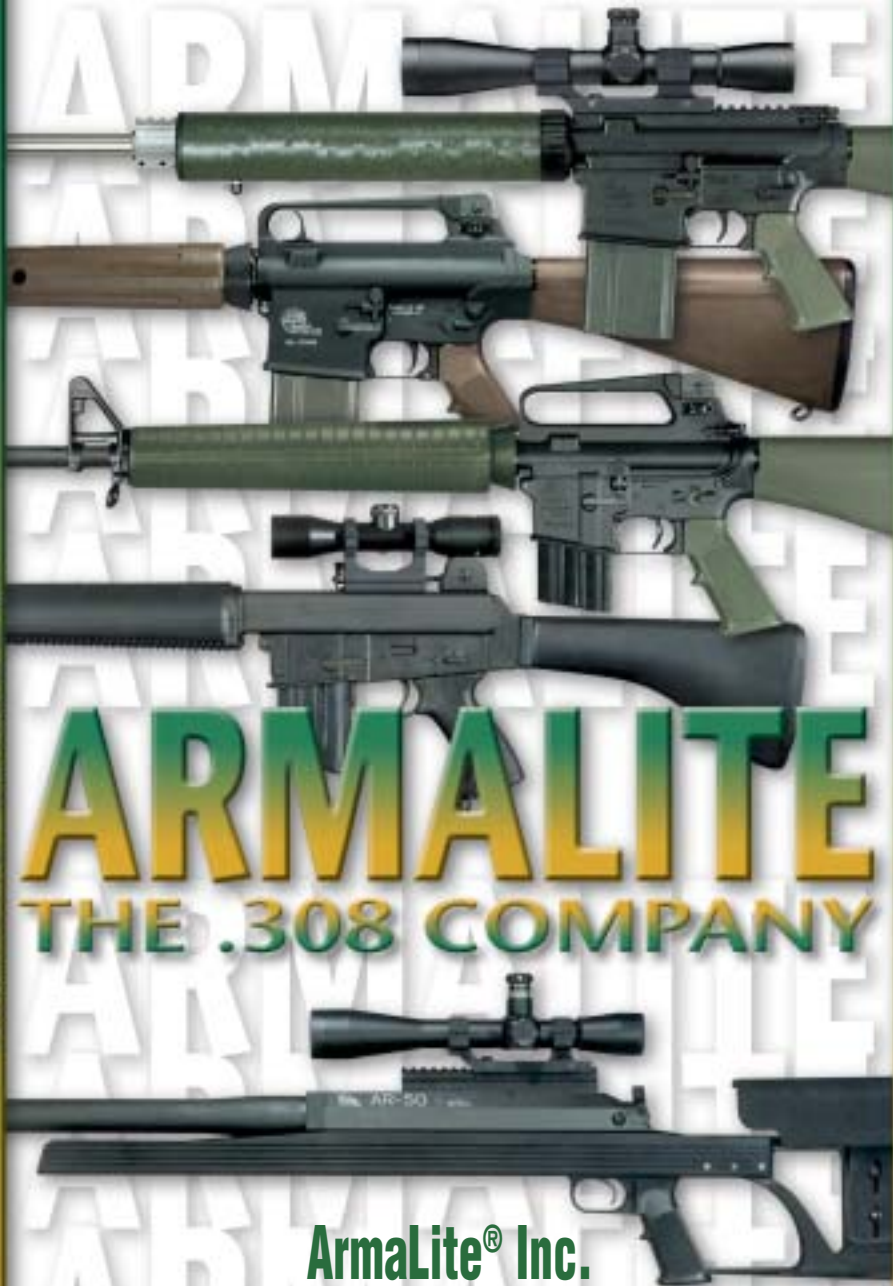
Signature _____

ORDER NO.	QTY.	DESCRIPTION	PRICE EA.	TOTAL

- Attach Money Order or Cashiers Check or include Credit Card info.
- Dealers, include hand signed FFL and Sales Tax Certificate if current copies are not on file with us.
- All Canadian orders must be paid in U.S. funds.
- ArmaLite® reserves the right to ship orders in multiple packages and/or split orders due to inventory availability.

Sub Total:
IL Residents Add
6.5% Sales Tax:
Shipping Charge:
See Ordering Information

TOTAL:



ARMALITE

THE .308 COMPANY

ArmaLite® Inc.

P.O. Box 299 / Geneseo, IL 61254

ORDERS/INFORMATION:

Hours: 8:00-4:30 CST Mon thru Fri

Orders: 1-800-336-0184 / Phone: 309-944-6939 / Fax: 309-944-6949

Website: www.armalite.com / E-mail: info@armalite.com

MILITARY & POLICE SALES

P.O. Box 340, Campbellsburg, KY 40011

Phone: 502-532-0300 / Fax: 502-532-0775 / E-mail: toppc@armalite.com