



"A History of Innovation"



Catalog 15

AMERICA'S FINEST FIREARMS,  
FIREARM PARTS, AND ACCESSORIES

## Index

AR-50™	2
AR-30™	2
AR-10®	3-7
National Match	4
SuperSASS™	5
(T) Rifles	5
A4 SPR® and SPR® Carbine	6
A2 Rifle and Carbine	7
M-15™	8-13
SPR Mod 1™	8-9
National Match	10
A4 SPR® and SPR® Carbine	11
(T) Rifle	11
Specialty Carbines	12
A2 Rifle and Carbine	13
7.62mm X 39/6.8 SPC	13
AR-24™	14
AR-10® Parts	
Upper Receivers	15-17
Lower Receivers	18-19
M-15™ Parts	
Upper Receivers	20-23
Lower Receivers	24-25
Magazines	26
Accessories	26-36
Handguards and Rails	28-29
Sights	30-31
Slings and Attachments	29, 32
Buttstocks, Bipods	33
22 Conversion Kits	33
AR-50 and AR-30 Accessories	34
Cases and Cleaning Kits	35
ArmaLite Gear	36
Other Information	....Outside Cover

## ArmaLite Inc.

PO Box 299  
Geneseo, IL 61254

## Order Information:

Hours:  
Monday thru Friday  
8:00 am - 4:15 pm Central Time

## Order contacts:

Phone: 800-336-0184  
Fax: 309-944-6949  
Web: [www.ArmaLite.com](http://www.ArmaLite.com)  
[sales@armalite.com](mailto:sales@armalite.com)  
[info@armalite.com](mailto:info@armalite.com)

P.O. Box 299 Geneseo, IL USA 61254, Tel. 309-944-6939, Fax 309-944-6949, [info@ArmaLite.com](mailto:info@ArmaLite.com)



November 16, 2010

## A WORD FROM THE PRESIDENT

ArmaLite's world class engineering and manufacturing facility produces some of the most innovative firearms in the world. Our attention to detail in every firearm makes us stand out at the range, on the hunt and in competitive matches.

In these hard economic times, you deserve the most value for your hard-earned dollar. ArmaLite® provides that value. We understand your cost concerns because we have them too.

Our products are dependable, flexible, and built to last. Their finish is top quality. Add their high resale value and it's just financially smart to buy an ArmaLite. Our long list of standard features makes buying an ArmaLite more than a purchase, it's an investment.

AR stands for ArmaLite: Accept no substitutes.

Mark Westrom  
President



## About the Cover

Cover photography by Steve Woods,  
[steve@rockriveriron.com](mailto:steve@rockriveriron.com).  
Accessories shown are sold separately from  
the M-15 SPR Mod 1™.

## Dress it up!

ArmaLite rifles are delivered with all the innovation, technology, and craftsmanship built into every rifle. To make it YOUR ArmaLite, fit to your shooting preference, check out what ArmaLite has to offer. ArmaLite carries a large variety of accessories. They can be seen on pages 26-36.



This AR-10 A4 Carbine is shown with an ArmaLite light weight free float handguard (p.28) with both a standard rail kit and 3" rail kits (p.29) attached. It also has quick detach front and rear sights, (p.30) and an EOTech sight (p.31). All can be seen in this catalog on pages 26 -36 and can be found on [www.ArmaLite.com](http://www.ArmaLite.com)

## AWB - Assault Weapons Ban

All ArmaLite models can be configured to conform to those areas that restrict our standard models. In those instances a muzzle brake, fixed stock, and appropriate sized magazine are substituted to conform to the law. Contact your ArmaLite dealer to order any model in AWB configuration.



## AR-10 A4 CB -2

This AR-10 carbine shows AWB configuration. AWB configuration will be designated with the -2 at the end of the part number

Please visit our website at [www.ArmaLite.com](http://www.ArmaLite.com) for much more information. At our website, you can find current pricing on all of our firearms, components, and accessories. You can purchase parts and accessories. You can learn about our Policies and detailed Contact Us information. You can also find the most complete set of answers to FAQs in the industry. Our website Library contains the history of ArmaLite, owner's manuals for all of our firearms, and dozens of technical notes that can greatly enhance your knowledge of our firearms and of firearms in general.

### **ArmaLite Library**

ArmaLite has a lot of information on hand for our customers and all of it can be found at [www.ArmaLite.com](http://www.ArmaLite.com). To the right is some information on recommended bullet weights for specific rifle configurations. More detailed information plus much more technical data can be obtained at [www.ArmaLite.com](http://www.ArmaLite.com) in our **Library** section under **Tech Notes**.

## **Bullet Weight Recommendation**

### **AR-10™**

.308 Winchester/7.62 NATO - 1:11.25" twist - 150-175 grain bullets with 168 grain being ideal.  
.308 Winchester/7.62 NATO - 1:10" twist - 150-185 grain bullets  
.338 Federal - 1:10" twist - 185-225 grain bullets  
.260 Remington - 1:8" twist - 120-140 grain bullets  
.243 Winchester - 1:10" twist - 90-100 grain bullets

### **M-15™**

.223 Remington/5.56mm NATO - 1:9" twist - 52-69 grain bullets  
.223 Remington/5.56mm NATO - 1:8" twist - 69-80 grain bullets  
.223 Remington/5.56mm NATO - 1:7" twist - 69-80 grain bullets

6.8 SPC - 1:11" twist - 110-115 grain bullets  
7.62X39 Russian - 1:10" twist - 123 grain bullets

### **AR-30™**

.308 Winchester - 1:10" twist - 150-175 grain bullets  
.300 WIN MAG - 1:10" twist - 168-180 grain bullets  
.338 LAPUA - 1:10" twist - 250-300 grain bullets

### **AR-50A1™**

50 BMG - 1:15" twist - 700-750 grain bullets

# **“AR Stands For ArmaLite”**





# AR-50 A1™



## AR-50A1™

**\$3,359 50A1B**  
Scope, Scope Mount, Bipod,  
and Monopod Not Included

Rock solid and precise, the AR-50A1™ provides a shooting experience unlike any other. The heart of the AR-50A1™ is its metallic stock to action interface. The patented V-Lock™ Bedding Wedge and V-Block Stock assure absolute strength and repeatability for superb accuracy. The aluminum stock reinforces the receiver like a bench-rest sleeve.

Independent testing has proven the AR-50A1 muzzle brake to be the best in the industry for both recoil control and accuracy. It scrapes away turbulent muzzle gasses and lets the bullet break into clean air for amazing accuracy. This rifle is not light, it's not quiet, but it sure is accurate.

Caliber	Barrel	Receiver	Stock Group	Accuracy	Specs
<b>.50 BMG</b>	-30" Chrome Moly -8 Groove -RH 1:15" -Highly Efficient Muzzle Brake	-Modified Octagonal Form -Triple Front Locking Lug Bolt -Spring Loaded Automatic Ejector -Sako Type Extractor	-Metal Stock -Adjustable Cheek Piece and Buttstock -Single Stage Trigger	7 - 8 Inches @ 1000 Yards	59.5" Long 33.2 lbs.

Each Rifle Includes: 15 Minute Sight Rail, Owner's Manual, Ear Plugs, Limited Lifetime Warranty, and 1 package of Tylenol™ in case you forget your ear plugs.

# AR-30™



## AR-30™

**.338 LAPUA**  
**.300 WIN MAG**  
**.308 WIN**

**\$2,021**  
**\$2,021**  
**\$2,161**

**30M338**  
**30M300**  
**30M308**

Scope, Scope Mount and Bipod  
Not Included

Based on the same revolutionary technology as its big brother the AR-50A1™; the AR-30™ is much smaller but offers the same amazing results. The AR-30's accuracy is undeniable no matter what caliber you choose. The AR-30™ features an octagonal receiver and a V-block bedding that eliminates movement of the action. Each features a single stage trigger and a 5 round detachable magazine for fast reloads during matches.

Caliber	Barrel	Receiver	Stock Group	Accuracy	Specs
<b>.338 LAPUA</b>	- 26" Chrome Moly - 6 Groove - RH 1:10" - Multi-Fluted Muzzle Brake	- Modified Octagonal Form - Dual Front Locking Lug Bolt	- Metal Stock - Single Stage Trigger	1 MOA	48" Long 12 lbs.
<b>.300 WIN MAG</b>	The AR-30™ .300 WIN MAG has the same specifications as the .338 LAPUA.				
<b>.308 WIN</b>	The AR-30™ .308 WIN has the same specifications as the .338 LAPUA with the exception of having a 4 groove barrel.				

Each Rifle Includes: 10 Minute Sight Rail, 5 Round Magazine, Bipod Adapter, Owner's Manual, and a Limited Lifetime Warranty

Additional Accessories for the AR-50 and AR-30 Available on Page 34

# ArmaLite 7.62 MM the Only AR-10®

There is only one AR-10®... the ArmaLite®. Others are copying, but the ArmaLite has a history of hard service and years of refinement... maturity that's lacking in copies. Our quality is in the details. Big things like receivers made of aircraft grade forgings instead of aluminum slabs. Little-noticed refinements like the patented Balanced Bolt™ which shifts firing loads more evenly over the bolt lugs. ArmaLite means quality, value and innovation. ArmaLite means the FINEST in firearms, from the ONLY AR-10® to the spectacular AR-50™. ArmaLite means firearms that you would be proud to own, to use... and to hand down to the next generation of American shooters.

If it doesn't say ArmaLite® it is NOT an AR-10®.

## Midlength Handguard Innovation

ArmaLite's midlength carbine system is special for a reason: ArmaLite first researched, engineered and now manufactures the whole thing!

Here are some advantages to ArmaLite's 8" gas system: The gas pressure at the port is more uniform shot to shot. The gas pressure is lower when the gun starts to unlock, so extraction is easier. The lower gas pressure also means less wear and tear on the parts, extending their lifetime. There is less residual unburned propellant so the gas system stays cleaner.

The longer handguard with the ArmaLite midlength system allows more ergonomic options for your grip and your accessories. The sight radius is longer which improves accuracy with iron sights. Plus, the distance from the muzzle to the front sight base is the same as a full-length rifle's, making it an ideal choice when using a bayonet.

No one but ArmaLite would give so much thought and expertise to producing a firearm so adaptable to your needs. It's just more proof of ArmaLite's "history of innovation."



## AR-10® and M-15™ Standard of Excellence

There are major differences between ArmaLite rifles and those of other rifle manufacturers. The many parts ArmaLite offers as standard product are what others charge extra for. ArmaLite stands alone on this: offering extras as standard product. That's the ArmaLite value.

The following list shows a few of the standard features ArmaLite gives you at no extra charge. Add them all up and you will find what makes an ArmaLite.

**Made in the USA**

### ArmaLite Standard AR-10® M-15™ Features

- Hard Coat Anodized All Aluminum Parts Per MIL-A-8625
- Phosphate Steel Parts Per Mil-STD-171
- Forged Aluminum Upper and Lower Receivers
- A4 Upper Receiver with Picatinny Rail MIL-1913
- Forward Assist Upper
- Port Door
- Brass Deflector
- Dry Film Interior Surface of Upper Receiver
- M4 Feed Ramps (all models)
- Steel Barrel Chambers and Bores Chrome Lined Per MIL-C-23422D
- Steel Barrels are Double Lapped
- Steel Barrels Phosphate (Under Gas Block as Well)
- A2 Flash Suppressor (Birdcage)
- M-15™ Barrels (CMV) Chrome Moly Vanadium (MIL-B-11595-E)
- Stainless Steel Barrels are Triple Lapped
- Load Leveled Bolt™
- Phosphate Steel Bolt Carrier Per Mil Spec
- Bolt Carrier Chrome Lined on the Inside
- GI Receiver Extension Tubes
- 2 Stage Trigger
- Phosphate Steel Bolt Per Mil Spec
- High Cap A2 Buttstock, Larger Storage Than GI Stock
- Bipod Adapter and Sling Swivel Installed on (T) Models
- All Rifles Test Fired
- All Complete Upper Assemblies Test Fired
- Limited Lifetime Warranty
- All Component Parts for All Rifles are Made and Assembled in the USA!

# AR-10 National Match™



**AR-10 National Match™**  
\$2,365 10A4BNMF

In what was one of the best kept secrets of National Match history, the Army Marksmanship Unit developed, tested and competed with the National Match grade AR-10® for more than a year. Their hard work culminated with the acceptance of the ArmaLite AR-10® National Match for use “across the board” in NRA Service Rifle competition.

Superbly accurate, this rifle is ready for long distance match domination. It's equipped with ArmaLite's National Match two stage trigger, select fit receivers, and extended elevation NM sights installed into ArmaLite detachable sight bases. With ArmaLite's exclusive stainless steel match barrel and ArmaLite's MIL STD 1913 Rail Handguard, the AR-10NM™ is ready for use at the National Matches. YOU should get one for the competitions YOU enter.



Caliber	Barrel	Upper	Lower	Accuracy	Specs
<b>7.62 MM NATO</b>	<ul style="list-style-type: none"> <li>- 20" Triple Lapped</li> <li>- Stainless Steel Match</li> <li>- RH 1:10"</li> <li>- Stainless A2 Flash Suppressor</li> <li>- 4 Groove</li> </ul>	<ul style="list-style-type: none"> <li>- Forged Flattop Receiver with Picatinny Rail and Forward Assist</li> <li>- Stainless Steel Picatinny Gas Block</li> <li>- NM Quad Rail Handguard (freefloat)</li> <li>- Clamp on NM Front Sights and NM Carry Handle</li> </ul>	<ul style="list-style-type: none"> <li>- Forged Lower Receiver</li> <li>- Finely Tuned 2 Stage NM Trigger</li> </ul>	<b>1 MOA</b>	41.25" Long 10.4 lbs

Each Rifle Includes: Two 20 Round Magazines, USMC Sling, Black Hard Case, Owner's Manual, Limited Lifetime Warranty, AR-10 National Match Carry Handle, Detachable AR-10 National Match Front Sight

Additional Accessories Available on Pages 26-36



AR-10 National Match™



AR-10 Super SASS™



AR-10 (T)™



AR-10 A4 SPR®



AR-10 A4 SPR® Carbine



AR-10 A2™



AR-10 A2™ Carbine



## AR-10 SuperSASS™

The SuperSASS™ (Semi-Automatic Sniper System) was originally designed for use by the US Military but a civilian model is available to discerning shooters who demand superb accuracy. The SuperSASS has a quad railed free float handguard, a fully adjustable stock and an adjustable gas system built to accommodate suppressed and unsuppressed fire. The SuperSASS is the ultimate tactical rifle system on the market.



### AR-10 Super SASS™ \$3,078 10SBF

Scope, Scope Mount and Bipod Not Included

Caliber	Barrel	Upper	Lower	Accuracy	Specs
<b>7.62 MM NATO</b>	<ul style="list-style-type: none"> <li>- 20" Triple Lapped</li> <li>- Stainless Steel Match</li> <li>- RH 1:10"</li> <li>- 4 Groove</li> <li>- Threaded 5/8-24</li> <li>- A2 Flash Suppressor</li> </ul>	<ul style="list-style-type: none"> <li>- Forged Flattop Receiver with Picatinny Rail and Forward Assist</li> <li>- Adjustable Gas Block</li> <li>- SuperSASS Quad Rail Handguard (freefloat)</li> </ul>	<ul style="list-style-type: none"> <li>- Forged Lower Receiver</li> <li>- Finely Tuned Two Stage NM Trigger</li> <li>- Fully Adjustable Sniper Stock</li> </ul>	<b>1 MOA</b>	<b>39.5" Long 9.4 lbs</b>

Each Rifle Includes: One 10 Round Magazine, One 20 Round Magazine, USMC Quick Adjust Sling, Two Sling Swivel Mount, Hard Case, Owner's Manual, and a Limited Lifetime Warranty

## AR-10(T)™

The target version of ArmaLite's famous AR-10® features a triple lapped stainless steel match grade barrel which contributes to the rifle's superb accuracy. Equipped with a light weight freefloat handguard, Picatinny railed upper receiver and gas block. The (T) is the perfect rifle for anyone who desires the very best in accuracy.

Lightweight Aluminum Handguards are ideal for target, hunting, and all shooting sports where accuracy and functionality are a necessity.



### AR-10(T)™ 10TNF Green

**\$1,892 10TBNF Black**

Scope, and Scope Mount Not Included

### AR-10(T) .338 Federal™

**\$1,912 10TBNF338**

Scope, and Scope Mount Not Included

### AR-10(T) .260 Remington™

**\$1,892 10TBNF260**

Scope, and Scope Mount Not Included

Caliber	Barrel	Upper	Lower	Accuracy	Specs
<b>7.62 MM NATO</b>	<ul style="list-style-type: none"> <li>- 20" Triple Lapped</li> <li>- Stainless Steel Match</li> <li>- RH 1:10"</li> <li>- 4 Groove</li> </ul>	<ul style="list-style-type: none"> <li>- Forged Flattop Receiver with Picatinny Rail and Forward Assist</li> <li>- Gas Block with Rail</li> <li>- Lightweight Aluminum Handguard (freefloat)</li> </ul>	<ul style="list-style-type: none"> <li>- Forged Lower Receiver</li> <li>- Finely Tuned Two Stage NM Trigger</li> <li>- Hi-Cap Stock™</li> </ul>	<b>1 MOA</b>	<b>39.5" Long 9.4 lbs.</b>
<b>.338 Federal</b>	<ul style="list-style-type: none"> <li>- 22" Triple Lapped</li> <li>- Stainless Steel Match</li> <li>- RH 1:10"</li> <li>- 6 Groove</li> </ul>	Specs are the same as above.	Specs are the same as above.	<b>1 MOA</b>	<b>41.5" Long 9.5 lbs.</b>
<b>.260 Remington</b>	<ul style="list-style-type: none"> <li>- 22" Triple Lapped</li> <li>- Stainless Steel Match</li> <li>- RH 1:8"</li> <li>- 6 Groove</li> </ul>	Specs are the same as above.	Specs are the same as above.	<b>1 MOA</b>	<b>41.5" Long 9.5 lbs.</b>

Each rifle includes: Two 10 Round Magazines, Hard Case, Owner's Manual, and Limited Lifetime Warranty

Additional Accessories Available on Page 26-36

# AR-10 A4 SPR®



## AR-10A4 SPR®

\$1,557 10A4F Green

10A4BF Black

Scope, and Scope Mount Not Included



## AR-10A4™ Carbine

\$1,557 10A4CBF Green

10A4CBF Black

Scope, Scope Mount,  
Backup Sights Not Included

The AR-10A4 SPR® (Special Purpose Rifle) and AR-10A4™ Carbine combine the rugged dependability of the AR-10® with the flexibility provided by the flattop Picatinny rail on the receiver and gas block. This line provides a perfect platform for all sighting options without sacrificing accuracy.

The AR-10A4™ Carbine is compact, heavy hitting, rugged and versatile. The ArmaLite designed mid-length handguard and gas tube system provide optimal gas pulse and reliability.

SPR® is a registered Trademark of ArmaLite. President Mark Westrom and ArmaLite developed the SPR® (Special Purpose Rifle) years ago to represent a family of rifles that is superior to other platforms. This platform is able to adapt to the needs of the operator and provide optimal use for any situation.



## AR-10A4 .243 Winchester™

\$1,557 10A4243BF Black

Scope, Scope Mount not included

The AR-10A4 SPR® chambered in .243 Winchester is a multi-purpose rifle built to run a multi-purpose precision cartridge. Whether you are hunting varmint, or deer, or shooting paper at long range, it is hard to beat the AR-10A4 SPR® in .243 Winchester.

	Caliber	Barrel	Upper	Lower	Accuracy	Specs
AR-10A4 SPR®	<b>7.62 MM NATO</b>	- 20" Double Lapped Chrome Lined - Threaded 5/8-24 - RH 1:11.25" - Flash Suppressor - 6 Groove	- Forged Flattop Receiver with Picatinny Rail and Forward Assist - Gas Block with Rail	- Forged Lower Receiver - Tactical Two Stage Trigger - Hi-Cap Stock™	1.5 - 2 MOA	41" Long 9.6 lbs
AR-10A4™ Carbine	<b>7.62 MM NATO</b>	- 16" Double Lapped Chrome Lined - Threaded 5/8-24 - RH 1:11.25" - Flash Suppressor - 6 Groove	- Forged Flattop Receiver with Picatinny Rail and Forward Assist - Gas Block with Rail	- Forged Lower Receiver - Tactical Two Stage Trigger - 6 Position Collapsing Stock with G.I. Diameter Ext. Tube	2 - 2.5 MOA	34.5" Collapsed 38" Extended 9 lbs
AR-10A4™ 243 WIN	<b>.243 Winchester</b>	- 20" Match Grade Chrome Moly - Not Threaded - RH 1:10" - 6 Groove	- Forged Flattop Receiver with Picatinny Rail and Forward Assist - Gas Block with Rail	- Forged Lower Receiver - Tactical Two Stage Trigger - Hi-Cap Stock™	1-1.5 MOA	41" Long 9.4 lbs

Each rifle includes: One 10 Round Magazine, One 20 Round Magazine, Sling, Hard Case, Owner's Manual, and a Limited Lifetime Warranty.



## AR-10A2™



**AR-10A2™**  
\$1,561 10A2F Green  
10A2BF Black

Built in the standard A2 configuration, the AR-10A2™ features a forged fixed handle upper receiver with forward assist and an A2 front sight. Built to intense quality standards and featuring the latest AR technologies on the market. The AR-10A2™ is a true work of art.

The AR-10A2™ Carbine features a 16 inch barrel and collapsible stock which are combined with ArmaLite's innovative mid-length handguard and gas flow technologies. The heavy caliber carbine is compact, reliable and accurate. Expect nothing less from our carbines.



**AR-10A2™ Carbine**  
10A2CF Green  
\$1,561 10A2CBF Black

	Caliber	Barrel	Upper	Lower	Accuracy	Specs
AR-10A2™	<b>7.62 MM NATO</b>	- 20" Double Lapped Chrome Lined - Threaded 5/8-24 - RH 1:11.25" - Flash Suppressor - 6 Groove	- Forged A2 Receiver with Forward Assist - .70/.195 Battle Sight - A2 Front sight	- Forged Lower Receiver - Tactical Two Stage Trigger - Hi-Cap Stock™	1.5 - 2 MOA	41" Long 9.6 lbs
AR-10A2™ Carbine	<b>7.62 MM NATO</b>	- 16" Double Lapped Chrome Lined - Threaded 5/8-24 - RH 1:11.25" - Flash Suppressor - 6 Groove	- Forged A2 Receiver with Forward Assist - .70/.195 Battle Sight - A2 Front sight	- Forged Lower Receiver - Tactical Two Stage Trigger - 6 Position Collapsing Stock with G.I. Diameter Ext. Tube	2 - 2.5 MOA	34.5" Collapsed 38" Extended 9 lbs

Each rifle includes: One 10 Round Magazine, One 20 Round Magazine, Sling, Hard Case, Owner's Manual, and a Limited Lifetime Warranty.

Additional Accessories Available on Page 26-36

## AR-10(T) Carbine™

### Hog & Big Game Carbine



**AR-10 (T) Carbine™**  
\$1,892 10TCBNF Black  
Scope and Scope Mount Not Included

This AR-10(T)™ Carbine combines the light weight and compact size of the carbine with the accuracy of the target model to give you a rifle that outperforms all other carbines. You will be ready on your next hunt with the light weight configuration and match stainless steel barrel chambered in 7.62 NATO.

Caliber	Barrel	Upper	Lower	Accuracy	Specs
<b>7.62 MM NATO</b>	-16" Triple Lapped - Stainless Steel Match - RH 1:10" - A2 Flash Suppressor - 4 Groove	- Forged Flattop Receiver with Picatinny Rail and Forward Assist - Picatinny Gas Block - Midlength Round Handguard (freefloat)	- Forged Lower Receiver - Finely Tuned 2 Stage NM Trigger - Hi-Cap Stock™	1 MOA	37.5" Long 8.6 lbs

Each rifle includes: Two 10 Round Magazines, Hard Case, Owner's Manual, and Limited Lifetime Warranty



## M-15 SPR Mod 1

### M-15 SPR Mod 1™

**\$1,529 15SPR1LB**

**LE 6 Inch Carbine**

Optic Not Included

ArmaLite's® Special Purpose Rifle (SPR®) has proved for years to be the best platform for versatility. Now, the SPR Mod 1™ provides you modularity in spectacular fashion. The SPR Mod 1 is a forged, one-piece upper receiver/rail system with exclusive detachable side and bottom rails.

In true ArmaLite fashion, the SPR Mod 1 is like no other on the market. The SPR Mod 1's three o'clock, six o'clock, and nine o'clock rails are detachable. That's right, you can change your 1913 rails to fit your changing needs for sights... lights... lasers... grips... or swivels.

ArmaLite takes that versatility even further. Each SPR Mod 1 comes with 4 additional types of rails at no extra cost. We give you a 1913 rail with a quick detach sling swivel hole. Each rifle comes with a low insert for when you need a bare rail with a low profile. There's also a plain insert with a quick detach sling swivel hole. For a system that knows no limitation, there are also rails that are half smooth and half Picatinny rail. Changing your rails... your add-ons... and your SPR Mod 1... is as easy as turning an allen wrench.

Ingenuous versatility isn't the only reason you'll want an SPR Mod 1. Its one-piece construction offers you a continuous optics platform. There's no gap to bridge between receiver and upper rail when you're installing your scope or sights. This one-piece construction also gives the sighting platform extra rigidity. It's a good, strong backbone. That means your sights will stay zeroed in the most trying conditions.

**The SPR Mod 1 is descended from a long line of solid performing M-15™ rifles and carbines.**  
**Below are highlights of the M-15™ line up.**

M-15 A4 SPR™



M-15 A4™ Carbine



M-15 A2™



M-15 A2™ Carbine



M-15 (T)™



# M-15 SPR Mod 1



## M-15 SPR Mod 1™

**\$1,554 15SPR1CB**  
**Midlength Carbine**

Scope Not Included

Front and rear clamp on sights are provided with each Mod 1.

	Caliber	Barrel	Upper	Lower	Accuracy	Specs
15SPR1LB 6 inch System	<b>5.56 MM NATO</b>	<ul style="list-style-type: none"> <li>- 16" Double Lapped Chrome Moly Vanadium Steel with Chrome Lined Bore and Chamber</li> <li>- Threaded 1/2-28</li> <li>- RH 1:7"</li> <li>- 6 Groove</li> </ul>	<ul style="list-style-type: none"> <li>- Forged Flattop Receiver with Continuous Optic Platform</li> <li>- Short 6" Gas System</li> <li>- Custom Modular Rail</li> <li>- Gas Block with Rail</li> </ul>	<ul style="list-style-type: none"> <li>- Forged Lower Receiver</li> <li>- Tactical Two Stage Trigger</li> <li>- 6 Position Collapsing Stock with G.I. Diameter Ext. Tube</li> </ul>	1.5 MOA	35.5" Extended 32" Collapsed 6.5 lbs
15SPR1CB Midlength	<b>5.56 MM NATO</b>	<ul style="list-style-type: none"> <li>- 6 Groove</li> <li>- 16" Double Lapped Chrome Moly Vanadium Steel with Chrome Lined Bore and Chamber</li> <li>- Threaded 1/2-28</li> <li>- RH 1:9"</li> <li>- 6 Groove</li> </ul>	<ul style="list-style-type: none"> <li>- Forged Flattop Receiver with Continuous Optic Platform</li> <li>- Midlength Gas System</li> <li>- Custom Modular Rail</li> <li>- Gas Block with Rail</li> </ul>	<ul style="list-style-type: none"> <li>- Forged Lower Receiver</li> <li>- Tactical Two Stage Trigger</li> <li>- 6 Position Collapsing Stock with G.I. Diameter Ext. Tube</li> </ul>	1.5 MOA	35.5" Extended 32" Collapsed 6.5 lbs

Each rifle includes: One 30 Round Magazine, Sling, Hard Case, Owner's Manual, and a Limited Lifetime Warranty.

**Additional Accessories Available on Page 26-36**

The SPR Mod 1 is descended from a long line of solid performing M-15™ rifles and carbines. Below are highlights of the M-15™ line up.

M-15 A2 National Match™



M-15 A4 National Match™



LEC15A4™ Carbine



M-15 A4 7.62X39™



M-15 A4 6.8SPC™



M-15 A4™ Carbine





# M-15 National Match™



## M-15A2NM™

**\$1,388 15A2NM Green**  
**15A2BNM Black**

Year after year more national level shooters have chosen ArmaLite National Match rifles over other brands. With our history of support to the National Matches, it's no surprise. When National Match shooters intend to win, they look to ArmaLite.

This isn't by accident. ArmaLite's President is a veteran competitor, wearing the President's 100 tab for both the Distinguished Rifle and Distinguished Pistol Shot Badges, and the German Meisternadel in Gold for Pistol. He was also one of the early developers of the National Match M16.

Developed for the National Match shooter, the ArmaLite M-15A4 National Match SPR® allows versatility in sighting for other applications while conforming to match regulations by including the detachable NM carry handle.



## M-15A4NM SPR®

**\$1,413 15A4NM Green**  
**15A4BNM Black**

NM Carry Handle included



## M-15A2NM SPR®-2

**\$1,388 15A2NM-2 Green**  
**15A2BNM-2 Black**

NM Carry Handle included

National match rifles are available with and without flash suppressor. Match rifles without flash suppressor are AWB compliant and designated with (-2) after the part number. All specifications to AWB rifles are the same as standard National Match rifles listed below except flash suppressor and magazine capacity.



## M-15A4NM SPR®-2

**\$1,413 15A4NM-2 Green**  
**15A4BNM-2 Black**

NM Carry Handle included



Caliber	Barrel	Upper	Lower	Accuracy	Specs
<b>.223 Rem.</b> Chambered .223 Wylde	- 20" Triple Lapped - Stainless Steel Match - RH 1:8" - Flash Suppressor - 6 Groove	- Forged A2 Receiver - NM Hooded Rear Sight - A2 NM Front Sight - NM Free Float Sleeve	- Forged Lower Receiver - Finely Tuned Two Stage NM Trigger - Hi-Cap Stock™	<b>1 MOA</b>	<b>39.5" Long</b> <b>9 lbs</b>
<b>.223 Rem.</b> Chambered .223 Wylde	- 20" Triple Lapped - Stainless Steel Match - RH 1:8" - Flash Suppressor - 6 Groove	- Forged Flattop Receiver with Picatinny Rail - NM Detachable Carry Handle - A2 NM Front Sight - NM Free Float Sleeve	- Forged Lower Receiver - Finely Tuned Two Stage NM Trigger - Hi-Cap Stock™	<b>1 MOA</b>	<b>39.5" Long</b> <b>9 lbs</b>

M-15A4NM SPR® M-15A2NM™

Each rifle includes: One 30 Round Magazines, USMC Quick Adjust Sling, Hard Case, Owner's Manual, and Limited Lifetime Warranty.

## M-15 A4 SPR®

ArmaLite's Special Purpose Rifle comes from the factory ready to perform. The M-15A4 SPR is an efficient platform on which to build multiple sighting options. Light recoiling and deadly accurate, the SPR line accepts detachable front and rear sights, carry handle or a host of scope mounts or devices conforming to the MIL STD 1913 (Picatinny) rail.

The M-15A4™ Carbine is designed with the mid-length handguard and gas tube technology. It provides an optimal gas pulse to power the 16" system so reliability is never an issue, all the while providing a comfortable grip.



**M-15A4 SPR®**  
\$1,060 15A4 Green  
15A4B Black

Scope, and Scope Mount Not Included



**M-15A4™ Carbine**  
\$1,060 15A4C Green  
15A4CB Black

Scope, Scope Mount, and Backup Sights Not Included

M-15A4 SPR®  
M-15A4™ Carbine

Caliber	Barrel	Upper	Lower	Accuracy	Specs
<b>5.56 MM NATO</b>	- 20" Double Lapped Chrome Moly Vanadium Steel with Chrome Lined Bore and Chamber - Threaded 1/2-28 - RH 1:9" - 6 Groove	- Forged Flattop Receiver with Picatinny Rail - Gas Block with Rail	- Forged Lower Receiver - Tactical Two Stage Trigger - Hi-Cap Stock™	1.5-2 MOA	39.5" Long 7.8 lbs
<b>5.56 MM NATO</b>	- 16" Double Lapped Chrome Moly Vanadium Steel with Chrome Lined Bore and Chamber - Threaded 1/2-28 - RH 1:9" - 6 Groove	- Forged Flattop Receiver with Picatinny Rail - Gas Block with Rail	- Forged Lower Receiver - Tactical Two Stage Trigger - 6 Position Collapsing Stock with G.I. Diameter Ext. Tube	1.5-2.5 MOA	32.25" Collapsed 35.5" Extended 7 lbs

Each rifle includes: One 30 Round Magazine, Sling, Hard Case, Owner's Manual, and Limited Lifetime Warranty.

Additional Accessories Available on Page 26-36

## M-15 (T)™

When pinpoint accuracy is demanded, look no further than the M-15(T)™. This rifle features a triple lapped match grade barrel delivering outstanding accuracy. The M-15(T)™ features a freefloat handguard, National Match trigger, and flattop Picatinny railed upper receiver and gas block.



**M-15(T)™**  
15A4TN Green  
\$1,296 15A4TBN Black

Scope, and Scope Mount Not Included

Caliber	Barrel	Upper	Lower	Accuracy	Specs
<b>.223 Rem.</b> Chambered .223 Wylde	- 20" Triple Lapped - Stainless Steel Match - RH 1:8" - 6 Groove	- Forged Flattop Receiver with Picatinny Rail - Gas Block with Rail - Ultra Lightweight Aluminum Handguard	- Forged Lower Receiver - Finely Tuned Two Stage NM Trigger - Hi-Cap Stock™	1 MOA	39.5" Long 8.6 lbs

Each rifle includes: One 10 Round Magazines, Hard Case, Owner's Manual, and Limited Lifetime Warranty.

# M-15 Law Enforcement Carbine™



## M-15A4CBA2K

**\$1,017 15A4CBA2K**

Optional Carry Handle on Page 27  
Rear Sight and Optic Not Included



## Law Enforcement Carbine

**\$975 LEC15A4CBK**

Optional Carry Handle on Page 27  
Rear Sight and Optic Not Included

The M-15A4CBA2K - A combination carbine. The perfect platform for many tactical applications. We have combined the sighting options from the A2 and A4 carbines for flexibility. The mid-length handguard and gas tube technologies assure perfectly tuned gas flow for reliability and superior look and feel.

The ArmaLite LEC15A4CBK is utilized by agencies all over the country and now available to all tactical shooting enthusiasts and features a step down barrel for Law Enforcement accessories. The A2 front sight combined with our flattop upper receiver and Picatinny rail accepts multiple sighting platforms.

	Caliber	Barrel	Upper	Lower	Accuracy	Specs
M-15A4CBA2K	<b>5.56 MM NATO</b>	- 16" Double Lapped Chrome Moly Vanadium Steel with Chrome Lined Bore and Chamber - Threaded 1/2-28 - RH 1:9" - 6 Groove	- Forged Flattop Receiver with Picatinny Rail - A2 Front Sight - 8" Mid-length Handguard	- Forged Lower Receiver - Tactical Two Stage Trigger - 6 Position Collapsing Stock with G.I. Diameter Ext. Tube	<b>1.5-2.5 MOA</b>	<b>32.25" Collapsed 35.5" Extended 6.5 lbs</b>
LEC15A4CBK	<b>5.56 MM NATO</b>	- 16" Double Lapped Chrome Moly Vanadium Steel with Chrome Lined Bore and Chamber - Threaded 1/2-28 - RH 1:9" - 6 Groove	- Forged Flattop Receiver with Picatinny Rail - A2 Front Sight - 6" Handguard	- Forged Lower Receiver - Tactical Two Stage Trigger - 6 Position Collapsing Stock with G.I. Diameter Ext. Tube	<b>1.5-2.5 MOA</b>	<b>32.25" Collapsed 35.5" Extended 6.5 lbs</b>

Each rifle includes: One 30 Round Magazine, Sling, Hard Case, Owner's Manual, and a Limited Lifetime Warranty.

**Additional Accessories Available on Page26-36**





# M-15A2™

The design that has stood the test of time. The M-15A2™ is ArmaLite's semi-automatic civilian version of the famed M16A2 Service Rifle.

Designed specifically to be a rifle that was durable, reliable, weather resistant, long lasting and dead on accurate; the A2 is an outstanding tactical rifle design! It is excellent for law enforcement, entry level service rifle training, hunting or collecting. The double-lapped chrome lined barrel is the basis of ArmaLite's superb accuracy.

The M-15A2™ Carbine is a close quarters combat rifle. Its 16 inch barrel, mid-length gas system and handguard provide reliability, accuracy and comfortable grip.



**M-15A2™**  
\$1,150 15A2 Green  
15A2CB Black

**M-15A2™ Carbine**  
\$1,060 15A2CB Black  
15A2C Green

	Caliber	Barrel	Upper	Lower	Accuracy	Specs
M-15A2™	<b>5.56 MM NATO</b>	- 20" Double Lapped Chrome Moly Vanadium Steel with Chrome Lined Bore and Chamber - Threaded 1/2-28 - RH 1:9" - 6 Groove	- Forged A2 Receiver - .70/.195 Battle Sight - A2 Front Sight	- Forged Lower Receiver - Tactical Two Stage Trigger - Hi-Cap Stock™	1.5-2 MOA	39.5" Long 8.2 lbs
M-15A2 Carbine™	<b>5.56 MM NATO</b>	- 16" Double Lapped Chrome Moly Vanadium Steel with Chrome Lined Bore and Chamber - Threaded 1/2-28 - RH 1:9" - 6 Groove	- Forged A2 Receiver - .70/.195 Battle Sight - A2 Front Sight	- Forged Lower Receiver - Tactical Two Stage Trigger - 6 Position Collapsing Stock with G.I. Diameter Ext. Tube	1.5-2.5 MOA	32.25" Collapsed 35.5" Extended 7 lbs

Each rifle includes: One 30 Round Magazine, Sling, Hard Case, Owner's Manual, and Limited Lifetime Warranty.

## M-15™ Alternate Calibers

Built on the same platform as the tactical M-15A4 Carbine, ArmaLite offers two alternate calibers. They are built with the mid-length handguard and gas system to provide the best in form and function.

You now have more caliber options with the release of these two rifles. Both give you heavy bullet advantages in a compact, M-15™ package.

The 6.8 SPC II provides a heavier bullet for customers preferring it to 5.56MM bullets.

The 7.62X39 is widely used and well respected around the world. Availability and price of this round should not be an issue.



**M-15-6.8™ Carbine**  
\$1,107 15A4C-6.8 Green  
15A4CB-6.8 Black  
Optics and Backup Sights not Included

**M-15-7.62X39™ Carbine**  
\$1,107 15A4C-7.62X39 Green  
15A4CB-7.62X39 Black  
Optics and Backup Sights not Included

	Caliber	Barrel	Upper	Lower	Accuracy	Specs
	<b>6.8 SPC</b> Chambered in 6.8 SPC II	- 16" Double Lapped Chrome Moly Vanadium Steel with Chrome Lined Bore and Chamber and M203 Step Down - Threaded 5/8-24 - SPC II Chamber - RH 1:11" - 4 Groove	- Forged Flattop Receiver with Picatinny Rail - Gas Block with Rail	- Forged Lower Receiver - Tactical Two Stage Trigger - 6 Position Collapsing Stock with G.I. Diameter Ext. Tube	1.5-2 MOA	33" Collapsed 36.25" Extended 7 lbs
	<b>7.62 X 39</b>	- 16" Double Lapped Chrome Moly Vanadium Steel with Chrome Lined Bore and Chamber and M203 Step Down - Threaded 5/8-24 - RH 1:10" - 4 Groove	- Forged Flattop Receiver with Picatinny Rail - Gas Block with Rail	- Forged Lower Receiver - Tactical Two Stage Trigger - 6 Position Collapsing Stock with G.I. Diameter Ext. Tube	1.5-2.5 MOA	33" Collapsed 36.25" Extended 7 lbs

Each rifle includes: One 10 Round Magazine, Sling, Hard Case, Owner's Manual, and Limited Lifetime Warranty.

Additional Accessories Available on Page 26-36

ArmaLite has a long history of providing the latest and greatest rifles in the world and it wasn't until recently that a pistol was designed that could qualify as a worthy addition to the product line. The AR-24 incorporates traditional lines, innovative design and state-of-the-art factory production. The slide, frame and barrel are fully machined from ordnance steel forging which strengthens and results in the best possible slide to frame fit on the market.

Full Size



## AR-24-15™

**Standard Full Size**

**Call 24-15**

**For Price 24-10 (AWB Configuration)**



## AR-24-15C™

**Combat Custom**

**Call 24-15C**

**For Price 24-10C (AWB Configuration)**

Compact



## AR-24K-13™

**Standard Compact**

**Call 24K-13**

**For Price 24K-10 (AWB Configuration)**



## AR-24K-13C™

**Combat Custom Compact**

**Call 24K-13C**

**For Price 24K-10C (AWB Configuration)**

### AR-24-15™ Standard Full Size

Caliber: 9mm	Sights:	Fixed Front and Rear Sight
Weight: 34.9 oz.		Three Dot Sight System
Overall Length: 8.27"	Trigger:	Single/Double Action
Overall Height: 5.26"	Trigger Pull:	12 lbs. Double Action
Rifling: 6 Groove, RH 1:16"		5.5 lbs. Single Action
Barrel: 4.67"	Features:	Serration on Front and Backstrap
	Safety:	Trigger Sear Block Safety

### AR-24-15C™ Combat Custom

All features are the same as standard full size except the following:

Sights:	Fixed Front w/ Adjustable Rear Sight
	Three Dot Sight System
Features:	Checkered Front and Backstrap

### AR-24K-13™ Standard Compact

Caliber: 9mm	Sights:	Fixed Front and Rear Sight
Weight: 33.4 oz.		Three Dot Sight System
Overall Length: 7.46"	Trigger:	Single/Double Action
Overall Height: 5.11"	Trigger Pull:	12 lbs. Double Action
Rifling: 6 Groove, RH 1:16"		5.5 lbs. Single Action
Barrel: 3.89"	Features:	Serration on Front and Backstrap
	Safety:	Trigger Sear Block Safety

### AR-24K-13C™ Combat Custom Compact

All features are the same as standard compact size except the following:

Sights:	Fixed Front w/ Adjustable Rear Sight
	Three Dot Sight System
Features:	Checkered Front and Backstrap

Each pistol includes: Two 15 Round Magazines (13 round for the compacts), Pistol Case, Pistol Lock, Owner's Manual, and Cleaning Brushes.

**10 Round Models Available for Assault Weapon Ban (AWB) States,  
AWB Models 24-10, 24-10C, 24K-10, and 24K-10C**

### AR-24™ Pistol Magazines

AR-24 Pistol 15 Round Magazine	PM2415	\$30.00
AR-24K Compact 13 Round Magazine	PM2413	\$30.00
AR-24 Pistol 10 Round Magazine	PM2410	\$30.00
AR-24K Compact 10 Round Magazine	PM2411	\$30.00



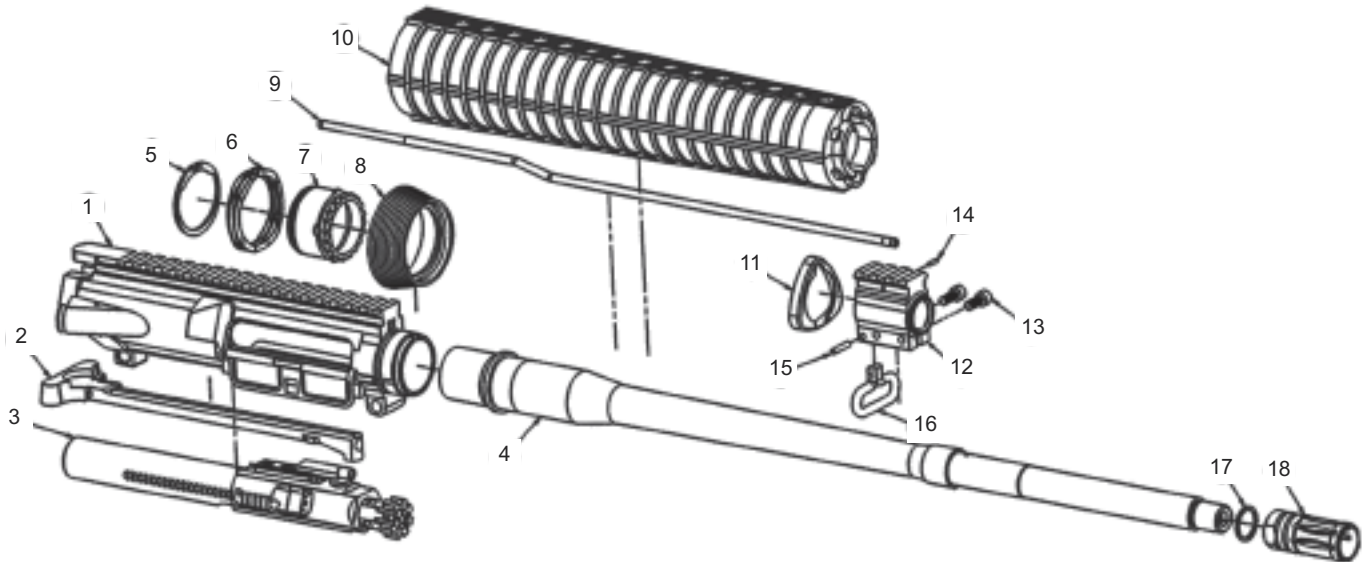
Full



Compact  
(Includes extended base pad)

## AR-10® Upper Receiver Parts and Product listing

ArmaLite provides our customers with diverse product lines and supports those lines with genuine ArmaLite products. The following pages are a list of parts and products that you may need to maintain or reconfigure your ArmaLite rifle. The following pages are organized first by rifle platform (AR-10, M-15, AR-50), then broken into parts starting with upper receiver parts and then lower receiver parts within each line. Not all items ArmaLite carries are shown in this catalog. Please check out [www.ArmaLite.com](http://www.ArmaLite.com) for the entire stock of parts and accessories.



Parts shown in diagram are described below.

Kits are listed separately.

Parts sold as kit only, will be specified and will not show pricing

1	AR-10A4™ Upper Receiver Assembly	10002001	\$319.00
	*AR-10A2™ Upper Receiver Assembly	10002002	\$352.00
	*AR-10(T)™ Upper Receiver Assembly	10002000	\$319.00
2	AR-10® Charging Handle Assembly	EA1129	\$47.00
3	AR-10® Bolt Carrier Assembly	10501001	\$257.00
4	.308 Barrel Tube	See page 13	
5	AR-10® Slip Ring Retaining Ring	EA1160	\$0.75
6	AR-10® Slip Ring Spring Assembly	EA1155	\$7.00
7	AR-10® Barrel Nut	EA1149	\$18.50
	*AR-10(T) Barrel Nut	EA1146	\$15.00
8	AR-10® Slip Ring	EA1150	\$13.00
9	AR-10® Rifle Gas Tube	10007010	\$12.00
	*AR-10® Midlength Gas Tube	10007005	\$13.00
10	A2 Rifle Handguards Black w/liner **	EU0070	\$20.00
	*A2 Rifle Handguards OD Green w/liner **	EG0040	\$20.00
	*Midlength, Handguards, Black w/liner **	EC0059	\$15.00
	*Midlength, Handguards, Green w/Liner **	EG0060	\$15.00
	*AR-10(T)™ Rifle Handguard, Green ^	10703411G	(Order as Kit
	*AR-10(T)™ Rifle Handguard, Black ^	10703411	See Page 24)
11	Handguard Cap (std. triangle)	EU0333	\$3.50
12	Picatinny Gas Block **	EA1151	\$42.00
	*(T) Picatinny Gas Block **	EA1154	\$49.00
13	Front Sight Housing Clamp Screw #10-32X1/2" **	EA1152	\$1.00
	*Picatinny Housing Clamp Screw #10-32X1/2" SST **	EA1152S	\$1.00
14	Gas Tube Pin, 5/64"x1/2" (A4)	EA1132	\$0.50
	*Gas Tube Pin, 5/64"x5/16" (A2)	EU0160	\$0.50
15	Sling Swivel Pin, 1/8" x 5/8"	EU0180	\$2.00
	*Front Sling Swivel Rivet **	EU0185	\$2.00
16	Front Sling Swivel**	EU0190	\$2.75
17	.308 Crush Washer	EU0220	\$2.80
18	AR-10A2 Flash Suppressor	10108200	\$23.00

### AR-10A2 Upper Parts and other Parts Not Shown

*A2 Rear Sight Kit	EA6040	\$55.00
*Front Sight Post (Square) **	EU0210	\$4.00
*Front Sight Detent Spring **	EU0230	\$0.50
*Front Sight Detent **	EU0231	\$1.15
*Front Sight Dowel Pins	EU0241P	(Order as
*A2 Front Sight Housing	EU0240-1P	Kit)
*A2 Front Sight Housing Kit	EU0240-1P	\$60.00
*Ejection Port Cover	EA1165	\$18.50
*Ejection Port Cover Spring	EA1167	\$0.40
*Ejection Port Cover Rod	EA1171	\$4.85
*Ejection Port Cover Rod AR-10(T)	EA1170	\$4.85
*AR-10 (T)™ Ejection Port Cover Kit	EA6100	\$22.00
*AR-10® Ejection Port Cover Kit	EA6105	\$22.00
*AR-10® Forward Assist Kit	10005001KIT	\$14.00

\* Parts not shown in diagram

\*\* Interchangeable part with M-15™

^ Parts that require gunsmith installation

- If bolt carrier assembly or barrel is replaced, head space needs to be checked by a qualified gunsmith.



## AR-10® Complete Upper Assembly

ArmaLite's complete upper assemblies offer a fast and economical way to convert your ArmaLite for other uses. Each includes a forged upper receiver, barrel, handguards, bolt carrier group and charging handle assembly. All flattop receivers have engraved numbers on rail. We test fire all of our Complete Upper Assemblies before shipping.

### AR-10A2™ Upper Assembly

Forged fixed handle upper receiver with forward assist and A2 front sight housing. Barrel is double lapped chrome lined RH 1:11.25". Available in green or black.



20" AR-10A2™

U10A2F	green	\$825
U10A2BF	black	\$825



16" AR-10A2™ Carbine

U10A2CF	green	\$825
U10A2CBF	black	\$825

### AR-10A4™ Upper Assembly

Forged flat top receiver with Picatinny rail, and forward assist. Barrel is double lapped chrome lined RH 1:11.25". Available in green or black.



20" AR-10A4™

U10A4F	green	\$786
U10A4BF	black	\$786



16" AR-10A4™ Carbine

U10A4CF	green	\$786
U10A4CBF	black	\$786

### AR-10(T)™ Upper Assembly

Forged flattop receiver with Picatinny rail, light weight aluminum handguard and forward assist. AR-10(T)™ barrel is 20" triple lapped stainless steel with 1:10." RH.



U10TF	green	\$998
U10TBF	black	\$998

### AR-10 Super SASS™ Upper Assembly

Forged flattop receiver with Picatinny rail, quad rail handguard, adjustable gas system and forward assist. Barrel is 20" triple lapped stainless steel with 1:10." and an A2 flash suppressor.



10002025F	black	\$1,814
-----------	-------	---------

### The AR-10(T) 338 Federal™ Upper Assembly

Equipped in a similar fashion as AR-10(T), the AR-10(T) .338 Federal has a 22" triple lapped stainless steel barrel with 1:10" RH.



U10TBF338	black	\$1,098
-----------	-------	---------

### The AR-10(T) 260 Rem™ Upper Assembly

Equipped in a similar fashion as AR-10(T), the AR-10(T) .260 Remington has a 22" triple lapped stainless steel barrel with 1:8" RH.



U10TBF260	black	\$995
-----------	-------	-------

### AR-10 National Match™ Upper Assembly

Forged flattop receiver with Picatinny rail, free float quad rail handguard and forward assist. Barrel is 20" triple lapped stainless steel with 1:10." and stainless steel flash suppressor.



U10A4BNMF	black	\$1,049
-----------	-------	---------

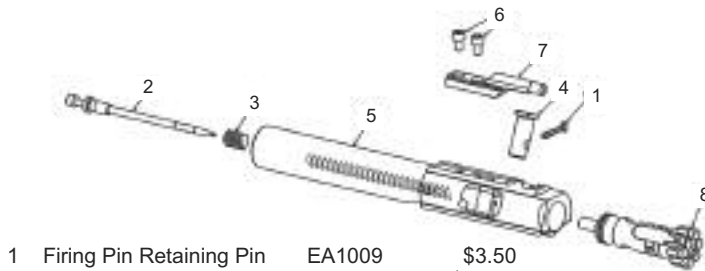
### The AR-10 243 WIN™ Upper Assembly

Equipped in a similar fashion as AR-10A4 SPR®, the AR-10 243 Winchester has a 20" chrome moly barrel with 1:10" RH.



U10A4243BF	black	\$786
------------	-------	-------

## AR-10® Upper Receiver Parts and Barrel



1	Firing Pin Retaining Pin	EA1009	\$3.50
2	Firing Pin	EA1010	\$17.50
3	Firing Pin Spring	EA1011	\$1.00
4	Firing Pin Kit	EA6060	\$16.50
5	Cam Pin	EA1015	\$11.50
6	Bolt Carrier	10503011	\$149.00
7	Key Screws	EB0140	\$0.50
8	Bolt Carrier Key .223/.308	EB0150	\$14.00
	Bolt Assembly	EA1080	\$115.00

### AR-10A4 Flattop Upper Receiver with Picatinny Rail

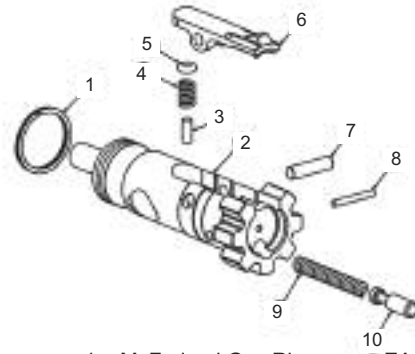
(Complete Upper Receivers Include Ejection Port Cover, Rod, Spring, and Forward Assist)

Complete	10002001	\$319.00
243 Winchester	10001010	\$319.00
T Complete	10002000	\$319.00
T .338 Federal	10001014	\$325.00
T .243 Winchester	10001012	\$325.00
T .260 Remington	10001016	\$325.00
Stripped	10003001E	\$277.00

### AR-10A2 Fixed Handle Upper Receiver

(Complete Upper Receivers Include Ejection Port Cover, Rod, Spring, and Forward Assist)

Complete	10002002	\$352.00
Stripped	10003002	\$290.00



1	McFarland Gas Ring	EA1055	\$6.05
2	AR-10 Bolt (Unassembled)	EA1060	\$71.00
3	Extractor Spring Insert	10403035	(order as kit)
4	Extractor Spring	EA1030	\$0.70
	Extractor Spring Kit (w/ spring, insert & o-ring)	10403030	
5	O-Ring	EA1136	(order as kit)
6	Extractor	EA1025	\$33.00
7	Extractor Pin	EA1020	\$0.50
8	Ejector Pin	EA1040	\$0.50
9	Ejector Spring	EA1050	\$0.60
10	Ejector	EA1045	\$2.20

### Complete AR-10® Bolt Carrier Assembly

10501001 \$257.00

### AR-10® Charging Handle

EA1129 \$47.00

**Barrel Assemblies. New and Improved.** The most complete barrel assemblies on the market. ArmaLite's barrels are custom made for extreme accuracy and long life. All complete barrel assemblies include the barrel, a full front sight housing (or railed gas block), gas tube, gas tube pin, barrel nut, slip ring, slip ring spring assembly, slip ring retaining ring, flash suppressor and handguard cap. Carbine models require ArmaLite's midlength handguard. (T) models will include T barrel nut.

**A2 Barrel Assembly** Rifle length and carbine barrels are chrome lined RH 1:11.25".



20" B10A2 \$375



16" B10A2C \$375

### A4(T) Barrel Assembly

20" Stainless Steel Heavy Barrel RH 1:10".



20" B10T-20 \$450

### AR-10 National Match™ Barrel Assembly

20" Stainless Steel Heavy Barrel, with Stainless Steel Flash Suppressor, RH 1:10".



20" B10A4NM \$500

**A4 Barrel Assembly** Rifle length and carbine barrels are chrome lined RH 1:11.25".



20" B10A4 \$375



16" B10A4C \$375

### (T) .338 Federal Barrel Assembly

22" Stainless Steel Heavy Barrel RH 1:10".



22" B10T338 \$535

### (T) .260 Remington Barrel Assembly

22" Stainless Steel Heavy Barrel RH 1:8".



22" B10T260 \$450

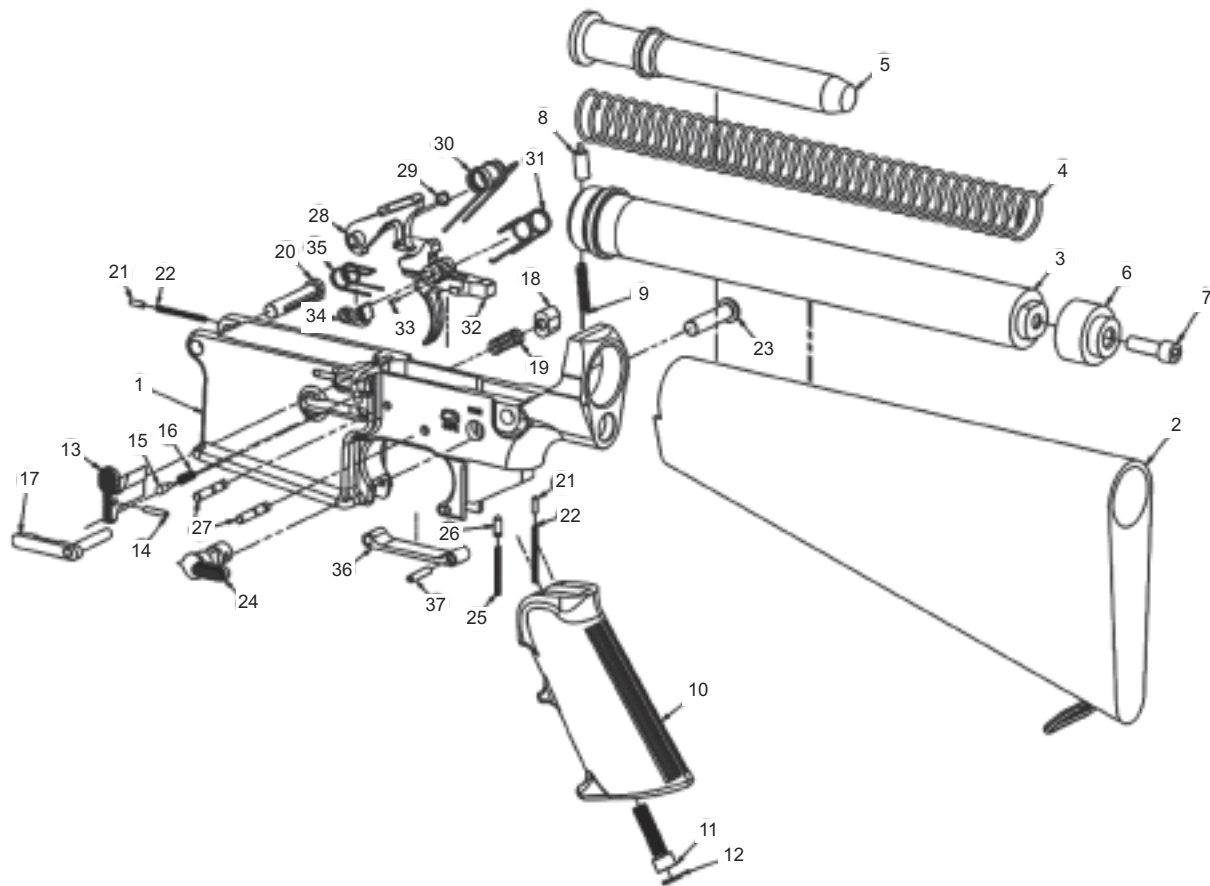
### .243 Winchester Barrel Assembly

20" Chrome Moly Barrel RH 1:10".



20" B10A4243M-2 \$425

# AR-10® Complete Lower Assembly Part



1	AR-10® Lower Receiver	EA0901G	Call for Price		
2	Buttstock Assembly (Black)	EA1120	\$35.00	24	Safety Selector **
	Buttstock Assembly (Green)	EA1120G	\$40.00	25	Ejection/Safety Spring **
3	Receiver Extension Tube (Rifle) **	EL0370	\$30.00	26	Safety Detent **
	Receiver Extension Tube (Carbine)	10207025	\$42.00	27	Hammer /Trigger Pin **
4	AR-10® Operating Spring	EA1095	\$6.00	28	Two Stage Tactical Hammer **
5	AR-10® Buffer	EA1090	\$18.00	29	Clip, Hammer Pin Retaining, (D-Ring) **
	AR-10® Carbine Buffer	EC0120	\$38.00	30	Hammer Torsion Spring **
6	Buttstock Spacer **	EL0130	\$1.50	31	Hammer/Trigger Spring **
7	A2 Buttstock Screw **	EL0090	\$3.00	32	Two Stage Trigger **
8	Buffer Detent	EL0190	\$1.00	33	Disconnecter Pin 1/16" X 1/4" **
9	Buffer Detent Spring	EL0200	\$1.00	34	Two Stage Disconnecter **
10	Pistol Grip (Black) **	EL0030	\$5.00	35	Disconnecter Spring **
	Pistol Grip (Green) **	EG0050	\$6.00	36	Trigger Guard Assembly **
11	Pistol Grip Screw **	EL0010	\$1.00	37	Trigger Guard Pin, 1/8" X 5/8" **
12	Pistol Grip Washer **	EL0020	\$0.50		
13	AR-10® Bolt Stop	10203100	\$16.00		
14	Bolt Stop Pin, 3/32" X 1/2" **	EL0220	\$0.50		
15	Bolt Stop Plunger **	EL0240	\$1.25		
16	Bolt Stop Spring **	EL0250	\$0.75		
17	Magazine Catch	EA1108	\$12.00		
18	Magazine Catch Button **	EL0270	\$3.75		
19	Magazine Catch Spring	EL0280	\$0.75		
20	AR-10® Pivot Pin	EA1112	\$6.00		
	AR-10® Pivot Pin, Oversized	EA5100	\$10.00		
21	Detent Pin, Pivot/Takedown **	EL0150	\$0.75		
22	Detent Spring, Pivot/Takedown **	EL0140	\$0.75		
23	AR-10® Takedown Pin	EA1113	\$6.00		
	AR-10® Takedown Pin, (Oversized)	EA5101	\$10.00		
				Not Shown	
				Carbine Buttstock Lock Ring	EC0053A \$3.25
				Carbine Buttstock Plate	EC0054 \$2.25
				<b>** Parts that are interchangeable with M-15</b>	
				<b>* Parts 28, 29 ,32, and 34 are sold as Trigger Kits only</b>	
				<b>See Below</b>	
				National Match 2 Stage Trigger	10309050 \$145
				Tactical 2 Stage Trigger	10309000 \$97





## AR-10® Complete Lower Assembly with A2 Buttstock

### With Tactical 2 Stage Trigger

Black Furniture L10B  
Green Furniture L10

### With 2 Stage National Match Trigger

Black Furniture L10BN  
Green Furniture L10N

Current Pricing at  
[www.ArmaLite.com](http://www.ArmaLite.com)



## AR-10® Complete Lower Assemblies with Collapsible Buttstock (GI Diameter Receiver Tubes)

### With Tactical 2 Stage Trigger

Black Furniture L10PCB  
Green Furniture L10PC

Current Pricing at  
[www.ArmaLite.com](http://www.ArmaLite.com)



## Stripped Lower Receiver EA0901G

Current Pricing at  
[www.ArmaLite.com](http://www.ArmaLite.com)



## ArmaLite AR-10A4 Gunsmith Core Kit

All of the parts for the heart of the rifle; The Complete Upper and Lower Receivers with all Internal parts, including the genuine ArmaLite Tactical 2 Stage™ Trigger Group.  
**GSK10A4**

Current Pricing at  
[www.ArmaLite.com](http://www.ArmaLite.com)

Spring and Field Replacement Kits on page 27

**AR-10® Lower Receiver Parts Kits.** These kits include: ejector/safety spring, pistol grip screw, black pistol grip washer, pistol grip, safety detent spring (2), detent (2), takedown pin, pivot pin, buffer detent, buffer detent spring, bolt stop pin, bolt stop, bolt stop plunger, bolt stop spring, mag catch, mag catch button, mag catch spring, safety selector, trigger guard assembly, trigger guard pin and Tactical 2 Stage Trigger or National Match 2 Stage Trigger.

### with Tactical 2 Stage Trigger

Black Grip	10209000	\$150
Green Grip	10209010	\$150

### with 2 Stage National Match Trigger

Black Grip	EA6011	\$225
Green Grip	EA6011G	\$225



### AR-10® Buttstock Kits:

Kit includes everything needed to install a buttstock.

A2 Buttstock Kit, Black	EA6050	\$85
A2 Buttstock Kit, Green	EA6050G	\$85

Collapsible Stock Kit, Black	10702302	\$115
Collapsible Stock Kit, Green	10702307	\$115

### ArmaLite 2 Stage Trigger Kits

Kits include numbers 28, 29, 32, and 34 found on page 18.

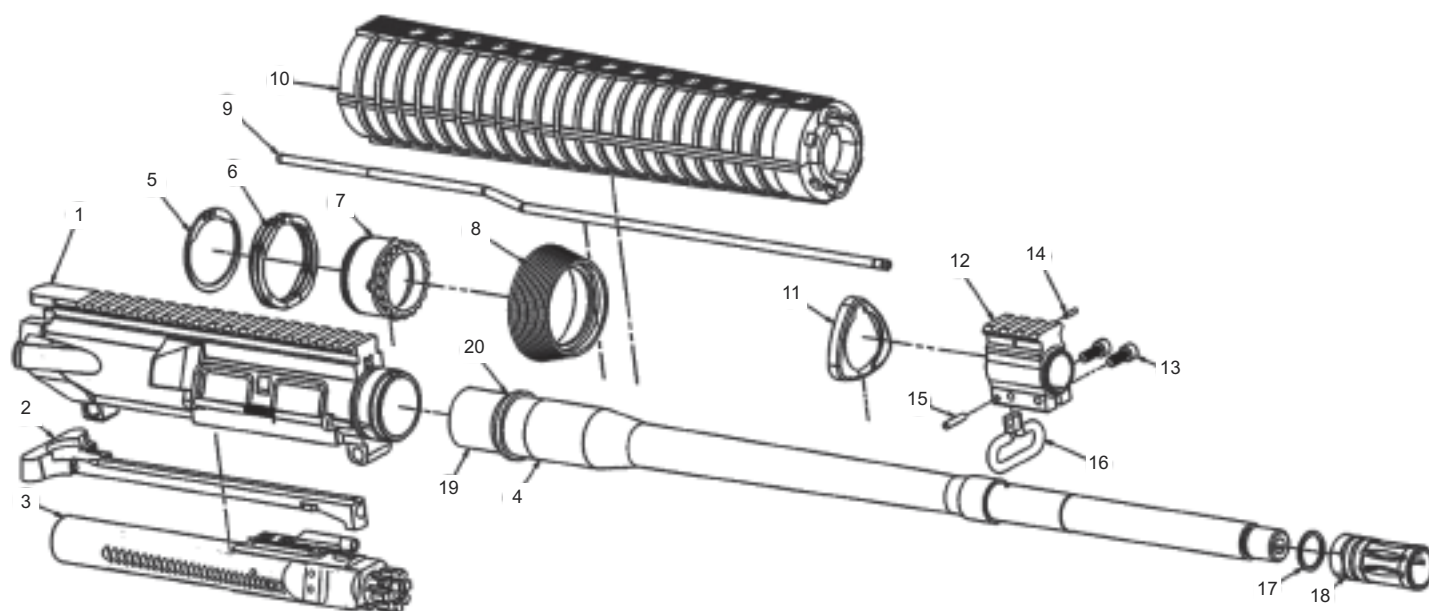
National Match trigger tuned for light and consistent trigger pulls.

National Match 2 Stage	10309050	\$145
Tactical 2 Stage	10309000	\$97



Additional Accessories  
on Page 26-36

# M-15™ Complete Upper Assembly Part



Parts shown in diagram are described below.

Kits are listed separately.

Parts sold as kit only will be specified and will not show pricing

1	M-15A4™ Upper Receiver Assembly	EK0130A	\$190.00
*	M15A2™ Upper Receiver Assembly	EK0110A	\$228.00
2	M15™ Charging Handle Assembly	EU0010B	\$26.00
3	.223 Bolt Carrier Group	EB0170	\$154.00
4	.223 Barrel Tube	See page 23	
5	Slip Ring Retaining Ring	EU0320	\$1.00
6	Slip Ring Spring	EU0310	\$4.50
7	.223 Barrel Nut	EU0330	\$20.00
*	National Match Barrel Nut	ENM012	\$30.00
*	M15-A4 (T)™ Barrel Nut	EU0072	\$18.50
8	Slip Ring	EU0300B	\$11.00
9	.223 Rifle Gas Tube	EU0170	\$12.00
*	Carbine 6" Gas Tube	EC0060	\$12.00
*	Carbine Gas Tube Midlength	EC0058	\$12.00
*	National Match Rifle Gas Tube	EU0172	\$12.00
10	M15-A2™ NM Handguards, Free Float, Green	EG0080	\$20.00
*	M15-A2™ NM Handguards, Free Float, Black	EU0069	\$20.00
*	Carbine Midlength Handguards, Black w/Liner **	EC0059	\$15.00
*	Carbine Midlength Handguards, Green w/Liner **	EG0060	\$15.00
*	A2 Handguards OD Green w/Liner **	EG0040	\$20.00
*	A2 Handguards Black, w/Liner **	EU0070	\$20.00
*	M15-A4 (T)™ Rifle Handguard Kit, Black ^	15703411KIT	\$80.00
*	M15-A4 (T)™ Rifle Handguard Kit, Green ^	15703411GKIT	\$80.00
*	M15-A4 (T)™ Carbine Handguard Kit, Black ^	15703412KIT	\$80.00
*	M15-A4 (T)™ Carbine Handguard Kit, Green ^	15703415GKIT	\$80.00
11	Handguard Cap (STD Triangle)	EU0333	\$3.50
12	Picatinny Gas Block (Clamp) Moly. **	EA1151	\$42.00
*	"T" Picatinny SST (Clamp) Gas Block **	EA1154	\$49.00
*	Front Sight Housing Pre-Ban Pin On w/Bayonet Lug	EU0240-1P	\$60.00
13	Picatinny Housing Clamp Screw, #10-32 x 1/2"	EA1152	\$1.00
*	Picatinny Housing Clamp Screw, #10-32 x 1/2" SST	EA1152S	\$0.80
14	Gas Tube Retaining Pin, 5/64 x 5/16" Pin	EU0160	\$0.50
*	Gas Tube Retaining Pin, 5/64" x 1/2" Spiral Pin	EA1132	\$0.50
15	Front Sling Swivel Rivet **	EU0185	\$2.00
*	Sling Swivel, 1/8" x 5/8" Spiral Pin	EU0180	\$2.00
16	Front Sling Swivel **	EU0190	\$2.75
17	Shim Washer (.223 Peel Washer)	EU0120	\$3.00
18	.223 A2 Flash Suppressor	EU0100	\$5.25
19	.223 Barrel Extension w/Feed Ramps	EU0331-1	\$35.00
20	Barrel Extension Index Pin	EU0332	\$3.00

## Upper Half Parts Not Shown

*	National Match Barrel Sleeve Lock Nut ^	ENM013	\$4.00
*	National Match Barrel Nut ^	ENM012	\$30.00
*	National Match Barrel Sleeve, Rifle (KIT)^	EMNM04-1	\$133.00
*	National Match Front Sight Post **	ENM040	\$12.00
*	Front Sight Detent Spring **	EU0230	\$0.50
*	Front Sight Detent **	EU0231	\$1.15
*	Front Sight Dowel Pins	EU0241P	\$2.00
*	Picatinny Gas Block Spacer Shim Washer	EU0335	\$1.00
*	Front Sight Set Screw **	EU0824	\$1.15
*	5/64" Allen Wrench National Match	ENM128	\$0.45
*	A2 Rear Sight Kit w/Battle Sight Aperture	EM2002	\$55.00
*	A2 Front Sight Housing **	EU0240-1P	\$60.00
*	Front Sight Post (Square)	EU0210	\$4.00
*	Ejection Port Cover Kit	EMK009	\$6.75
*	Forward Assist	EU0460	\$10.00
*	Forward Assist Kit	EMK007	\$11.30

\* Parts not shown in diagram

\*\* Interchangeable part with AR-10®

^ Parts that require gunsmith installation

- If bolt carrier assembly or barrel is replaced, head space needs to be checked by a qualified gunsmith.

## M-15™ Complete Upper Assembly

Each ArmaLite Upper Assembly includes a forged upper receiver, handguards, bolt carrier group and charging handle assembly. Flattop upper receivers have engraved numbers on rail. All M-15 steel barrels are chrome lined, double lapped, chrome moly vanadium steel. We test fire all of our complete upper assemblies before shipping.

### M-15A2™ Upper Assembly

Forged fixed handle with forward assist and an A2 front sight housing. Barrel is 1:9" RH twist. Available in black or green.



<b>20" M-15A2™</b>		
U15A2	green	\$525
U15A2B	black	\$525



<b>16" M-15A2™ Midlength Carbine</b>		
U15A2C	green	\$525
U15A2CB	black	\$525

### M-15A4™ Upper Assembly

Forged flattop receiver with Picatinny rail and forward assist. Barrel is 1:9" RH twist. Available in black or green.



<b>20" M-15A4™</b>		
U15A4	green	\$500
U15A4B	black	\$500



<b>16" M-15A4™ Midlength Carbine</b>		
U15A4C	green	\$500
U15A4CB	black	\$500

### M-15A4CBA2™ Upper Assembly

Combination Midlength Carbiners. Forged flattop receiver with Picatinny rail, forward assist and A2 front sight housing. Barrel is 1:9" RH twist.



<b>16" M-15A4CBA2™ Midlength</b>		
U15A4CBA2	black	\$515



<b>16" LEC-15™ 6" Carbine</b>		
EK0446B	black	\$585

### M-15A4™ Upper Assembly

M-15 Midlength in different calibers. Forged flattop receiver with Picatinny rail, forward assist. 6.8 barrel is 1:11" RH twist with step down barrel. 7.62X39 barrel is 1:10" RH twist with step down barrel. Available in black or green.



<b>16" 6.8 SPC Midlength</b>		
U15A4C-6.8	green	\$650
U15A4CB-6.8	black	\$650



<b>16" 7.62X39 Midlength</b>		
U15A4C-7.62X39	green	\$650
U15A4CB-7.62X39	black	\$650

Also available in Assault Weapon Ban (AWB) Configuration

### M-15A4(T)™ Upper Assembly

Forged flattop receiver with Picatinny rail, ultralight aluminum handguard and forward assist. The barrel is a 20" triple lapped stainless steel with RH 1:8" Available in black or green.



U15A4T	green	\$600
U15A4TB	black	\$600

### A2 National Match Upper Assembly

A2 National Match upper has a forged fixed carry handle with National Match front and rear sights with NM apertures, and a 20" triple lapped stainless steel barrel with a 1:8 twist and free float sleeve. Available in black or green.



U15A2NM	green	\$730
U15A2BNM	black	\$730



U15A4NM	green	\$675
U15A4BNM	black	\$675

### A4 National Match Upper Assembly

A4 National Match upper has a forged flat top upper receiver with National Match front sight, a 20" triple lapped stainless steel barrel with a 1:8 twist and free float sleeve. National Match detachable carry handle sold separately. Available in black or green.



U15A2NM-2	green	\$789
U15A2BNM-2	black	\$789



U15A4NM-2	green	\$789
U15A4BNM-2	black	\$789

-2 upper receivers have no flash suppressor and are AWB compliant



## M-15 Mod 1 Upper Assembly

Forged one piece upper receiver with integrated Picatinny rail handguard with the receiver.

The SPR Mod 1 upper assembly is a forged, one-piece upper receiver/rail system with exclusive detachable side and bottom rails.

Whether you prefer the 6" short gas system, or the 8" mid-length gas system, the SPR Mod 1's upper assemblies provide the unique versatility provided by the whole rifle's upper. The bottom and side rails are detachable so you can change your rails to fit different needs for sights... lights... grips... or swivels.

Each upper comes with four different kinds of rails: a 1913 rail with a quick detach sling swivel hole; a low profile plain insert; a plain insert with a quick detach sling swivel hole; and a rail that is half smooth and half Picatinny.

The SPR Mod 1's one-piece construction provides a continuous optics platform, or C.O.P. There's no gap to bridge between receiver and upper rail when installing a scope or sights. The one-piece construction also gives the sighting platform extra rigidity. That means sights will stay zeroed in the most trying conditions.

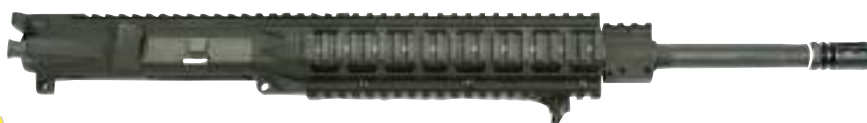
**NEW**



### SPR Mod 1, 6" Carbine

15003083 \$949

**NEW**



### SPR Mod 1 Midlength 8"

15003082 \$1144

## SPR Mod 1 Carbine Upgrade Kits

**NEW**



### Carbine Kit 6"

15003063 \$480

**NEW**



### Midlength Kit 8"

15003062 \$565

See Technote 84



### Universal Vise Block

ArmaLite's Flat Top Vise Jaws are a new, unique set of Jaws that we developed specifically to hold all flat top AR-10® and M-15™ upper receivers (including our new SPR Mod 1). These Jaws hold the upper receiver in a sideways horizontal position, making barrel replacement easier and more secure than ever before. These Jaws clamp onto the top and bottom of the upper receiver, so there is less chance of deforming the upper receiver when using them. However, it is still important not to clamp the vise too tightly.

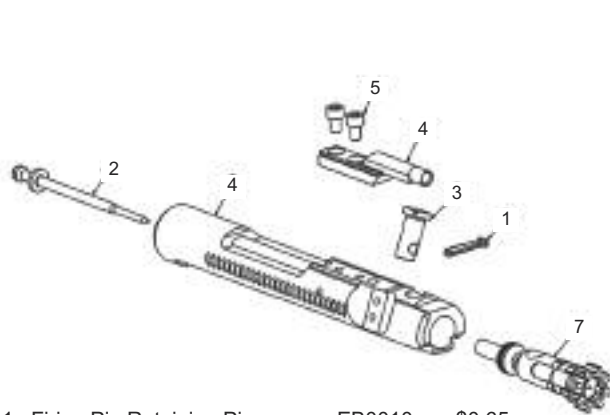
15901202 \$39.00



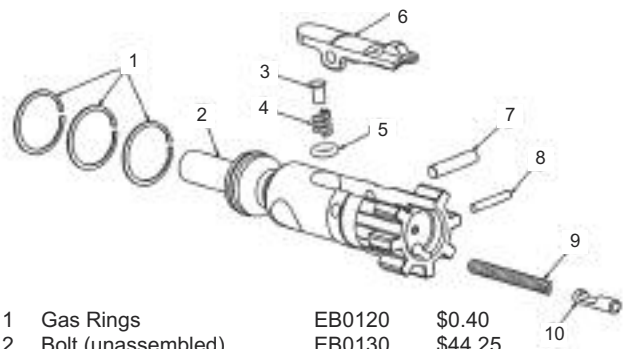
### SPR Mod 1 Barrel Wrench

15901015 \$19





1 Firing Pin Retaining Pin	EB0010	\$0.65
2 Firing Pin	EB0020	\$6.00
3 Cam Pin	EB0030	\$4.00
4 Bolt Carrier	EB0160	\$73.00
5 Key Screws	EB0140	\$0.50
6 Bolt Carrier Key .223/.308	EB0150	\$14.00
7 Bolt Assembly	EB0040	\$73.00



1 Gas Rings	EB0120	\$0.40
2 Bolt (unassembled)	EB0130	\$44.25
3 Extractor Spring Plunger	EB0080	\$1.00
4 Extractor Spring	EB0070	\$0.50
5 O-Ring	EB0065	\$0.50
6 Extractor	EB0060	\$15.50
7 Extractor Pin	EB0050	\$0..95
8 Ejector Pin	EB0090	\$0.50
9 Ejector Spring	EB0110	\$0.75
10 Ejector	EB0100	\$2.00

## M-15A4™ Flattop Upper Receiver

(Complete Upper Receiver Includes Forward Assist, Ejection Port Cover, Rod, and Spring)

Complete	EK0130A	\$190
7.62X39	EK0130A-7.62X39	\$190
6.8 SPC	EK0130A-6.8	\$190
Stripped	EU0520E	\$133

## M-15A2™ Fixed Handle Upper Receiver

(Complete Upper Receiver Includes Forward Assist, Rear Sights, Ejection Port Cover, Rod and Spring)

Complete with Rear Sight	EK0110A	\$228
Complete with NM Rear Sight	EK0111A	\$257
Stripped	E20140B	\$133



## Complete M-15™ Bolt Carrier Assembly

EB0170	.223	\$154
EB0170-6.8	6.8SPC	\$163
EB0170-7.62X39	7.62X39	\$167



## M-15™ Charging Handle

EU0010B \$26

**Barrel Assemblies** ArmaLite's barrels are custom made for extreme accuracy and long life. All complete barrel assemblies include the barrel, a full front sight housing (or railed gas block), gas tube, gas tube pin, barrel nut, slip ring, slip ring spring assembly, slip ring retaining ring, flash suppressor and handguard cap. Midlength carbine models require ArmaLite's midlength handguard. All steel barrels are (CMV) chrome moly vanadium steel (MIL-B-11595-E), chrome lined (MIL-C-23422D) and double lapped. Stainless steel barrels are triple lapped.

**A2 Barrel Assembly** Rifle length and midlength carbine barrels are (CMV) chrome lined RH 1:9".



20" B15A2	\$286
16" B15A2C	\$286

**A4 Barrel Assembly** Rifle length and midlength carbine barrels are (CMV) chrome lined RH 1:9".



20" B15A4	\$286
16" B15A4C	\$286

## SPR Mod 1 Barrel Assembly

6" gas system carbine barrels are (CMV) chrome lined RH 1:7".



16" 15003071	\$310
--------------	-------

## 6.8 and 7.62X39 Barrel Assembly (CMV)

16" midlength chrome lined.  
6.8 SPC - 1:11"RH, 7.62X39 - 1:10"RH



16" B15A4C-6.8	\$310
16" B15A4C-7.62X39	\$310

**LEC Barrel Assembly** Carbine barrels are (CMV) chrome lined RH 1:9".



16" EC0073SOF	\$280
---------------	-------

## National Match Barrel Assembly

20" Stainless steel heavy barrel, RH 1:8, with A2 front sight housing with NM sight post, with or without flash suppressor.



20" B15A2S (with Flash Suppressor)	\$315
------------------------------------	-------



20" B15A2NM(No Flash Suppressor)	\$297
----------------------------------	-------

## M-15 Target Barrel Assembly

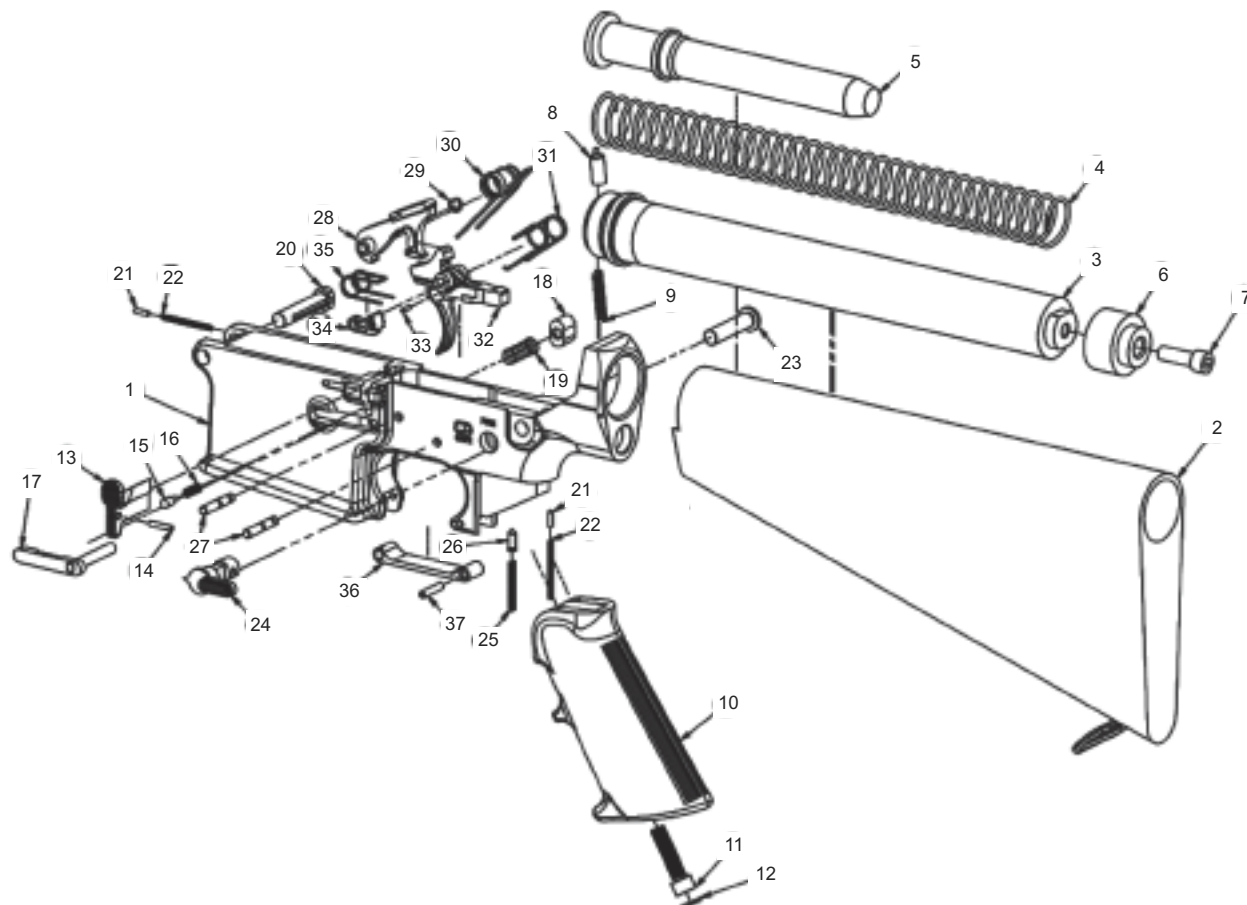
20" Stainless steel heavy barrel, RH 1:8



20" B15A4T	\$300
------------	-------

Also available in Assault Weapon Ban (AWB) Configuration.

## M-15™ Complete Lower Assembly Parts



1	M-15™ Lower Receiver	EA900G	Call for Price	31	Hammer/Trigger Spring **	15303055	\$2.00
2	Buttstock Assembly (Black)	EL0110	\$35.00	32	Two Stage Trigger **	10303050	*
	Buttstock Assembly (Green)	EG0020	\$40.00	33	Disconnecter Pin 1/16" X 1/4" **	10306000	\$0.50
3	Receiver Extension Tube (Rifle) **	EL0370	\$30.00	34	Two Stage Disconnecter **	10307000A	*
	Receiver Extension Tube (Carbine)	15207020	\$25.50	35	Disconnecter Spring **	10806100	\$2.00
4	M-15™ Operating Spring	EL0210	\$4.30	36	Trigger Guard Assembly **	EL0380	\$8.00
	M-15™ Carbine Operating Spring	EC0040	\$2.50	37	Trigger Guard Pin, 1/8" X 5/8" **	EL0430	\$0.35
5	M-15™ Buffer	EL0180	\$14.00	Parts not shown			
	M-15™ Carbine Buffer	EC0030R	\$14.00				
6	Buttstock Spacer **	EL0130	\$1.50				
7	A2 Buttstock Screw **	EL0090	\$3.00		Carbine Buttstock Lock Ring	EC0053A	\$3.25
8	Buffer Detent **	EL0190	\$1.00		Carbine Buttstock Plate	EC0054	\$2.75
9	Buffer Detent Spring **	EL0200	\$1.00	** Parts that are interchangeable with the AR-10® * Parts 28, 29 ,32, and 34 are sold as Trigger Kits only See Below			
10	Pistol Grip (Black) **	EL0030	\$5.00				
	Pistol Grip (Green) **	EG0050	\$6.00				
11	Pistol Grip Screw **	EL0010	\$1.00				
12	Pistol Grip Washer **	EL0020	\$0.50				
13	M-15™ Bolt Stop	EL0230	\$11.00				
14	Bolt Stop Pin, 3/32" X 1/2" **	EL0220	\$0.50				
15	Bolt Stop Plunger **	EL0240	\$1.25				
16	Bolt Stop Spring **	EL0250	\$0.75				
17	Magazine Catch	EL0260	\$6.00				
18	Magazine Catch Button **	EL0270	\$3.75	National Match 2 Stage Trigger Kit 10309050 \$14.00 Tactical 2 Stage Trigger Kit 10309000 \$97.00			
19	Magazine Catch Spring **	EL0280	\$0.75				
20	M-15™ Pivot Pin	EL0170	\$5.00				
	NM Pivot Pin, Oversized (.251 dia.)	ENM001	\$10.00				
21	Detent Pin, Pivot/Takedown **	EL0150	\$0.75				
22	Detent Spring, Pivot/Takedown **	EL0140	\$0.75				
23	M-15™ Takedown Pin	EL0160	\$5.00				
	NM Takedown Pin, Oversized(.251 dia.)	ENM002	\$10.00				
24	Safety Selector **	EL0290	\$10.00				
25	Ejection/Safety Spring **	EB0110	\$0.75				
26	Safety Detent **	EL0060	\$1.00				
27	Hammer /Trigger Pin **	EL0300	\$1.25				
28	Two Stage Tactical Hammer **	10308025	*				
29	Clip, Hammer Pin Retaining, (D-Ring)**	10308020	*				
30	Hammer Torsion Spring **	EL0320	\$1.50				





## M-15™ Complete Lower Assemblies with A2 Buttstock

### With Tactical 2 Stage Trigger

Black Furniture	L15B
Green Furniture	L15

### With 2 Stage National Match Trigger

Black Furniture	L15BN
Green Furniture	L15N

Current Pricing at  
[www.ArmaLite.com](http://www.ArmaLite.com)



## M-15™ Complete Lower Assemblies with Collapsible Buttstock (GI Diameter Receiver Tubes)

### With Tactical 2 Stage Trigger

Black Furniture	L15PCB
Green Furniture	L15PC

Current Pricing at  
[www.ArmaLite.com](http://www.ArmaLite.com)



## Stripped M-15™ Lower Receiver EA900G

Current Pricing at  
[www.ArmaLite.com](http://www.ArmaLite.com)



## ArmaLite M-15A4™ Gunsmith Core Kit

Kit contains all of the parts for the heart of the rifle: the complete upper and lower receivers with all internal parts, including the genuine ArmaLite Tactical 2 Stage™ Trigger Group.

GSK10A4 Call for current pricing

Current Pricing at  
[www.ArmaLite.com](http://www.ArmaLite.com)

**M-15™ Lower Receiver Parts Kits.** These kits include: ejector/safety spring, pistol grip screw, black pistol grip washer, pistol grip, safety detent spring (2), detent (2), takedown pin, pivot pin, buffer detent, buffer detent spring, bolt stop pin, bolt stop, bolt stop plunger, bolt stop spring, mag catch, mag catch button, mag catch spring, safety selector, trigger guard assembly, trigger guard pin and complete Tactical 2 Stage Trigger or National Match 2 Stage Trigger.

### with Tactical 2 Stage Trigger

Black Grip	15209000	\$120
Green Grip	15209010	\$120

### with 2 Stage National Match Trigger

Black Grip	EMK013	\$205
Green Grip	EMK013G	\$205

without Trigger	EMK035	\$48
without Trigger and Pistol Grip	EMK037	\$42.50

### Pistol Grip Kits Includes grip, screw and washer

Black	EMK020	\$7.50
Green	EMK020G	\$7.50

### M-15™ Buttstock Kits Includes everything needed to install a Buttstock

A2 Buttstock Kit, Black	EMK017	\$80
A2 Buttstock Kit, Green	EMK017G	\$80

Collapsible Stock Kit, Black	15702302	\$100
Collapsible Stock Kit, Green	15702307	\$100

### ArmaLite 2 Stage Trigger Kits

Kits include numbers 28, 29, 32, and 34 found on page 24.  
National Match trigger tuned for light and consistent trigger pulls.

National Match 2 Stage	10309050	\$145
Tactical 2 Stage	10309000	\$97





## AR-10® Magazines (7.62mm NATO, .243 Winchester, .260 Remington, and .338 Federal)

ArmaLite AR-10® Magazines are proprietary magazines. Previously ArmaLite AR-10's used a converted M-14 magazine (1st generation). Today AR-10® magazines (Generation II) come in many sizes. Each magazine will accommodate ammunition variants used on the AR-10® platform.

25 Round Magazine	10607003	\$53.00
20 Round Magazine	10607002	\$44.95
15 Round Magazine	10607009	\$44.95
10 Round Magazine	10607001	\$44.95
5 Round Magazine	10607000	\$44.95
20 Round 1st Generation	EX0515	\$39.00 (not shown)



M-14 Magazine

## AR-10® Generation II Magazine Conversion Kit

Includes converted 20 round mag body, follower, and floor plate. For converting USGI magazines ONLY with no commercial imitation springs. Please check your state laws pertaining to magazine capacities.

Generation II Mags	EA5085	\$30.00 (not shown)
--------------------	--------	---------------------

## M-14 Magazine

M-14 20 Round Magazine	EX0511C	\$25.00
------------------------	---------	---------

## M-15™ Magazines (5.56 MM NATO)

ArmaLite's M-15™ magazines come in a variety of sizes and materials as well as specific magazine design for different calibers in the ArmaLite line-up.

Starting with the .223/5.56mm, the 5 and 10 round magazine are steel magazines that are blocked 20 round magazines unless specified. The 20 and 30 round magazines are aluminum magazines.

30 Round Magazine	EX0068	\$19.00
20 Round Magazine	EX0070	\$18.50
10 Round Magazine (steel)	EX0072	\$17.00
5 Round Magazine (steel)	EX0099	\$18.00 (not shown)
5 Round Magazine (steel)	EX0075	\$19.50 (not shown)

Blocked 10 round magazine

## MAGPUL P-MAG

MAGPUL P-MAGS are polymer for .223/5.56mm rounds.

MAGPUL 30 Round	MAG211-BLK	\$14.20
MAGPUL 20 Round	MAG217-BLK	\$13.25

The M-15™ alternate calibers have magazines designed for that specific round. The 7.62X39 Russian round magazine comes in a 10 and 30 round aluminum magazine. The 6.8 SPC magazine comes in 10 and 25 round aluminum magazines in waffle design.

## (7.62x39MM)

30 Round Magazine	15601045	\$41.00
10 Round Magazine	15601040	\$32.00

## (6.8 SPC)

25 Round Magazine	15601050	\$45.00
10 Round Magazine	15601055	\$45.00



MAGPUL  
20

30



7.62X39 Magazine

6.8 SPC Magazine



## MAGPUL® Ranger® For USGI Magazines

The Magpul® Ranger Plate® is a floorplate replacement for current issue USGI 30 round magazines and incorporates an integral

loop, floorplate lock, and optional high visibility lockplate. Allows for rapid and controlled magazine handling. Flexible material protects magazine base from impact.

MAG555 \$22.99

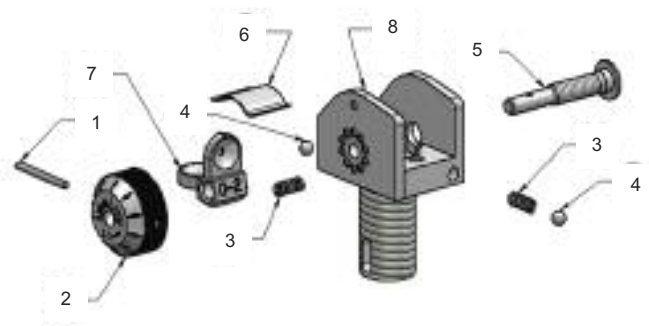


## Mag Pouch

Holds four M-15™ 30 round magazines. Will accommodate two AR-10® 20 round magazines.

Black	10606000B	\$52
Green	10606000	\$52

## Replacement Parts



1	*Windage Knob Pin	E20020	\$0.50
2	*ArmaLite 1/4 Minute Windage Knob	ENM015	\$15.00
3	*Helical Spring **	E20040	\$0.50
4	*Ball Bearing**	E20050	\$0.50
5	*Windage Screw	E20060	\$2.75
6	*Aperture Spring	EU0440	\$1.00
7	*Rear Sight Aperture, .060/.070	E20070	\$9.00
	*Battle Sight Aperture .70/.197	E20075	\$10.00
	NM Aperture .050/.060	ENM010	\$14.00
	NM Aperture .043/.050	ENM011	\$16.00
8	Standard Sight Base	E20080	\$18.00
	NM Rear Sight Base	ENM030	\$30.00
	*Sight Base/Forward Assist Pin	E20090	\$0.50
	*Elevation Helical Spring	E20100	\$0.75
	*Index Set Screw	E20110	\$2.00
	Standard Elevation Index	E20120	\$6.00
	NM Elevation Index Knob	ENM022	\$14.00
	Standard Elevation Knob	E20130	\$6.00
	NM Elevation Knob	ENM021	\$10.00

### A2 Complete Rear Sight Assembly

Includes items 1 thru 8

M-15™ Rear Sight Assembly	EM2002	\$55.00
AR-10® Rear Sight Assembly	EA6040	\$55.00

### NM Hooded Rear Sight Assembly

(Complete with National Match Sight Base)

1/2 MIN Hooded Rear Assembly	EMNM08	\$89.00
1/4 MIN Hooded Rear Assembly	EMNM09	\$89.00

\* Indicates Parts Usable on the AR-10®

\*\* 3 per Rifle for 1/2 Min. Windage or

\*\* 4 per Rifle for 1/4 Min. Windage

### Spring Replacement Kit

Everyone needs to replace a spring from time to time. This kit makes it easy. Includes: rear sight helical spring (3), rear sight helical spring (elevation), extractor spring, extractor spring plunger, ejector/safety spring (2), detent spring (2), buffer detent spring, bolt stop spring, mag catch spring, charging handle latch spring, front sight spring, ejection port cover spring, front sight spring.

AR-10® Spring Replacement Kit (single stage)	EA6000	\$16.00
M-15™ Spring Replacement Kit (single stage)	EMK010	\$15.00
M-15™ Spring Replacement Kit (2-stage)	EMK040	\$15.00



AR-10® Spring Replacement Kit

M-15™ Spring Replacement Kit

### Field Replacement Kit

This kit has everything useful to perform minor repairs to keep your rifle running for decades. Includes: helical spring (elevation), firing pin, firing pin spring, firing pin retaining pin, cam pin, extractor, extractor pin, extractor spring (2), ejector, ejector pin, ejector spring (2), gas rings, hammer spring, disconnect spring (2), trigger spring.

AR-10® Field Replacement Kit	EA6020	\$60.00
M-15™ Field Replacement Kit	EMK012	\$33.50



AR-10® Field Replacement Kit

M-15™ Field Replacement Kit

### M-15™ and AR-10® Gas Blocks

ArmaLite's Gas Blocks are finely machined carbon steel or stainless steel. These kits include gas block with a Picatinny Rail, (2) Clamp Screw and Gas Tube Pin.



#### .750 Gas Blocks

To replace A2 front sight gas block  
EU0236KIT (Black) \$60.00

#### .750 Gas Blocks

For all standard A2 and A4 models including NM.

EA1151KIT (Black)	\$60.00
EA1153KIT (Stainless)	\$60.00

#### .875 Gas Blocks

For (T) barrels.  
EA1154KIT (Stainless) \$60.00

### PRI Gas Blocks Both .750 and .875

05-075-01	\$60.00
05-875-01	\$60.00



### Picatinny Gas Block Spacer

Spacer is used on all barrels using .750 gas blocks for both M-15™ and AR-10®  
EU0335 \$1.00



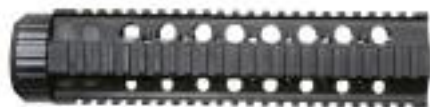




## AR-10® Free Float Quad Rail Handguard Kit

ArmaLite's National Match Handguard is free floating with four rails and can take the place of rifle length handguards. Sold as a kit and includes all parts needed to replace (T) and A2 rifle length handguards.

10705318KIT      \$235.00



## AR-10® Midlength Free Float Quad Rail Handguard Kit

ArmaLite's Midlength Quad Rail Handguard is free floating with four rails and comes with all parts needed to convert standard midlength handguards to the free float system.

AR-10® Midlength Handguard      10705323KIT      \$225.00



## ArmaLite Light Weight Free Float Handguard Kit

ArmaLite's light weight handguard floats the barrel while providing a sleek, good looking aluminum handguard. Kit includes all parts needed to replace standard rifle length to the free float system.

Note: When ordering, kits are specific to AR-10® and M-15™ platforms.

AR-10(T)™ Handguard	(Black)	10703411KIT	\$80.00
	(Green)	10703411GKIT	\$80.00

M-15(T)™ Handguard	(Black)	15703411KIT	\$80.00
	(Green)	15703411GKIT	\$80.00



## ArmaLite Light Weight Free Float Mid-length Handguard Kit

ArmaLite's midlength light weight handguard floats the barrel while providing a sleek, good looking aluminum handguard. Kit includes all parts needed to replace standard midlength handguard to this free float system.

Note: When ordering, kits are specific to AR-10® and M-15™ platforms.

AR-10(T)™ Midlength Handguard	(Black)	10703412KIT	\$80.00
	(Green)	10703412GKIT	\$80.00

M-15(T)™ Midlength Handguard	(Black)	15703412KIT	\$80.00
	(Green)	15703412GKIT	\$80.00

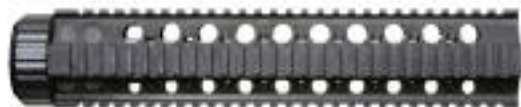
M-15(T)™ 6 inch Handguard	(Black)	15703413KIT	\$80.00	Not Pictured
	(Green)	15703413GKIT	\$80.00	



## ArmaLite 1913 Handguard

No special fitting or disassembly required; just replace the handguards and you're ready to go! This aluminum handguard system has 4 Picatinny rails and replaces the handguards on the A2 and A4 rifle and carbine models for both M-15™ and AR-10®. Includes 3 rail covers. (non-free floating system)

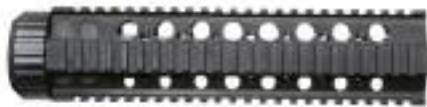
Rifle Length Handguard	10705110KIT	\$150.00
Midlength Carbine 8" Handguard	10705111KIT	\$150.00
Carbine 6" Handguard	10705112KIT	\$150.00



## ArmaLite M-15™ Free Float Quadrail Handguard

ArmaLite now offers a tactical free float quad rail to its M-15™ line of handguards. Designed similar to the AR-10 National Match, these rails can take the place of standard handguards. Sold as a kit and the rifle length kit includes all parts needed to replace (T) and A2 rifle length. The midlength kit can be used to replace the midlength handguards.

Rifle Length	15705318KIT	\$235
Midlength	15705323KIT	\$225





### AR-10(T)™ and M-15(T)™ Standard 5" Rail Kit

This kit mounts to the bottom of the round aluminum (T) handguard, allowing you to mount a bipod, light or any other attachment utilizing the Picatinny rail.

10703611 \$40.00



### AR-10(T)™ and M-15(T)™ 5" Rail Kit

This kit mounts to any large slot of the round aluminum (T) handguard, allowing you to attach sights or anything utilizing the Picatinny rail.

10703615 \$40.00



### AR-10(T)™ and M-15(T)™ 3" Rail Kit

This kit mounts to any slot of the round aluminum (T) handguard, allowing you to attach sights, lights or anything utilizing the Picatinny rail. Will not mount on bottom of handguard.

10703613 \$40.00



### Troy Industries Tactical Grip

Don't lose your grip when things get dirty. Troy Industries Modular Combat Grips offer versatility, unmatched durability and outstanding ergonomics in a grip that compliments all Picatinny rail systems.

EX3411 \$59.00



### Troy Industries QD 360 Push Button Mounts

The Troy 360 Rail mount is a low profile rock solid attachment for battle rails and sling mounts. Includes 360 degree push button Q.D. swivel.

15903015 \$33.00



### Troy Industries SS QD Push Button Swivel

S.S. Q.D. swivel sling mount. Made In the U.S.A

15903016 \$13.99



EX0003



15903025

### Side-Mount Sling Swivel

The Side-Mount Sling Swivel allows slings to be attached to the side of the rifle, attaching to any Mil-Std Picatinny Rail handguard system. The swivel mounts quickly and securely to the rifle using a button head cap screw allowing installation of the tactical slings.

EX0003 Quick Detach Sling Swivel \$2.00  
15903025 Sling Swivel Mount Assembly \$29.99



### Manta Rail M4RS

The M4RS kit is designed to cover three sides of the 6 inch M4 Carbine length rail. The modular design allows you to interface panels with any of the Manta Rail products, allowing you to cover any exposed rail area! Use the extension kits to cover your top rail to eliminate the mirage effect in your sights generated by the heat of the barrel!

M4RS \$89.95



### Manta Rail M4VGS

The M4VGS kit is designed to cover three sides of the 6 inch M4 Carbine length rail that has a Vertical Grip installed. This kit includes 1 ea. MR275MPB button panel, 1 ea. MR275MP panel, 4 ea. MR200MP panels, 4 ea. End Caps, 4 ea. Stiffing Rods and 1ea. Silicone Dielectric Grease. The modular design allows you to interface panels with any of the Manta Rail products, allowing you to cover any exposed rail area!

M4VGS \$89.95



### ERGO

18-Slot Ladder LowPro Rail Cover, package of 3 covers

10708005 \$35.00



### Troy Industries 2 Point Sling

You need to cover some dangerous ground. You need your weapon at-the-ready. You need Troy Industries' capable and comfortable Two Point Slings. The cushioned, non-slip shoulder pad is reversible for strong or weak-side carry.

EX0082 \$39.00



### ArmaLite Tactical Sling

With ArmaLite logo. Converts from a two point sling in seconds. Bungee construction AMBI one point adapter.

ALTS \$50.00

## Front and Rear Sights



### AR-10® Detachable Front Sight

Standard	EA5045	\$50.00
National Match Front Sight	10806410	\$70.00

### M-15™

M-15™ Detachable Front Sight	E20151	\$50.00
------------------------------	--------	---------



### AR-10® Detachable Carry Handle

Standard	EA5050	\$139.00
National Match Handle	10806400	\$218.00

### M-15™ Detachable Carry Handle

Standard	E20149	\$97.00
National Match Handle	E20220	\$170.00



### Midwest Industries Flip Up Sights

The MI flip up front sights mount to the Picatinny rail on the gas block and the rear sight mounts to the upper receiver.

M-15™ Flip Up Front Sight	EX3405	\$95.00
Universal Flip Up Rear Sight	EX3406	\$105.00
AR-10® Flip Up Front Sight	EX3404	\$95.00

### Midwest Industries Picatinny Rail Flip Up Front Sights

The MI Picatinny rail flip up front sights mount to the Picatinny rail of a quad rail handguard. Can be used for the M-15™ or the AR-10® rifle with a quad rail or T handguard, when the top rail is attached.

EX3407	\$95.00
--------	---------



### A.R.M.S # 71 LR/F

#### Front and Rear Flipdown Sights

Mounts to M-15™ Picatinny gas block and Picatinny rail upper receiver. Can be used with the AR-10® when mounted on a quad rail handguard.

EX1408	Set	\$89.00
--------	-----	---------



### MAGPUL MBUS Front and Rear Flipdown Sights

Mounts to M-15™ Picatinny gas block and Picatinny rail upper receiver. Can be used with the AR-10® when mounted on a quad rail handguard.

MAG245-BLK	Front Sight	\$37.95
MAG246-BLK	Rear Sight	\$55.05



### Double Star Front and Rear Flipdown Sights

Mounts to M-15™ Picatinny gas block and Picatinny rail upper receiver. Can be used with the AR-10® when mounted on a quad rail handguard.

DS412	Front Sight	\$99.99
DS401	Rear Sight	\$99.99



### Tru Glow Detachable Front Sight

Brightest M-15™ sight in the industry. Includes optional, push button light for use in complete darkness. Designed for front gas blocks for M-15™ extra long, super bright, protected green fiber. Click elevation adjustment. Includes sight-adjustment tool.

TG115	\$61.99
-------	---------



### Troy Industries Folding Front Sight M4 Style

EX3401	\$99.00
--------	---------



### Troy Industries Folding Front Sight HK Style

EX3403	\$99.00
--------	---------



### Troy Industries DOA Folding Rear Sight

Advanced design, superior sighting and battle-ready toughness define Troy Industries' Di-Optic Aperture (DOA) Folding Rear BattleSight. These sights provide lightning fast target acquisition and are manufactured to exceed military specs.

The optically engineered apertures center your eyes instantly and effortlessly providing a clearer target picture than with round apertures. For use on both the AR-10® and M-15™.

EX3400	\$119.00
--------	----------



## KNS Assorted Front Sight Post

KNS Post Sight Assortment For: M-16, AR-15, AR-10, SR-25. All post sight bodies are steel, with black oxide finish.

There are 7 sight configurations:

-3 square post—widths: .034, .052, .072;

-3 round dot post—diameter: .034, .052, .072, and one V-notch & inverted.

**ARSIGHTPACK \$44.00**



## KNS Hooded Cross Hairs

**ARHDST \$32.00**



## KNS Standard Cross Hairs

Sight Body Style - Standard .240 aperture.

Crosshair Type - Standard.

Crosshair Size - .010 Diameter.

Crosshair Material - Heat treated.

Installation - Replaces front sight post w/o modifications.

**ARSTST \$32.00**



## Trijicon Bright and Tough™ Night Sights

Trijicon Bright & Tough™ Night Sights are three-dot iron sights that increase night-fire shooting accuracy by as much as five times over conventional sights. Equally impres-

sive, they do so with the same speed as instinctive shooting and without the need for batteries.

Housed in a metal body and cushioned within silicon rubber, Bright & Tough Night Sights feature a unique shock resistant design that is patented by Trijicon. Each lamp is capped with a sapphire jewel to help evenly distribute the light while protecting the lamp from solvents and puncture. Contained within aluminum cylinders for additional protection, the lamps are mounted on silicon rubber cushions to withstand shock and heavy recoil.

**LAW1180 \$85.00**



## Trijicon Front Sight

The Trijicon front sight installs into A2 front sight.

**LAW1182 \$60.00**



## Mako Dual Picatinny Attachment

Fits all AR-10®, M-15™, 6" and 12" handguards.

Two short Picatinny rails, each 45 degrees off of

center Can be positioned on upper or lower

segment of handguard Gives excellent

positioning for operating flash lights or lasers.

Shortness of rails allow most of the handguard to remain unobstructed. Built from lightweight, heavy-duty, reinforced polymer.

**DPR16/4-B Black \$16.50**

**DPR16/4-G Green \$16.50**



## Mako Improved Picatinny Rail

Transform your rifle to a weapon capable of mounting various devices with these Picatinny Rails. Easy to fit. Molded from hardened plastic composite. Designed with an angle to position rail parallel to the barrel.

**UPR16/4-B Black \$16.50**

**UPR16/4-G Green \$16.50**



## EOTech XPS2-0 Transverse Holographic Weapon Sight

is the shortest model sight yet! This sight is smaller than the former N-cell battery sight and runs on a single 123 battery. It also has a longer battery life than the N-cell style sights.

Smaller, lighter and always fast. With the new single battery configuration, the XPS allows more rail space than ever, leaving more room for rear iron sights or NV mount.

**XPS2-0 \$519.00**



## WOTAC Tactical 4-14 Scope

WOTAC 4-14x50 with EPB reticle. 1/4MOA adjustments. Reticle is spaced in MOA, and 1/2MIL!

**LAW1020 \$329.00**



## ArmaLite™ Scope Mounts

ArmaLite's scope mounts provide outstanding, repeatable engagement with all Mil-Std Picatinny rails. Finely machined for high quality, our one piece scope mounts work with up to 50mm scope objectives.

**30mm Scope Mount EX0022 \$89.00**

**1" Scope Mount EX0027 \$89.00**



## A.R.M.S.® 30mm Throw Lever Rings

All Steel 30mm Ring, secured with A.R.M.S.® dovetail system to an extruded aluminum platform.

**#22 Low EX1380 \$119.00**

**#22 Medium EX1381 \$119.00**

**#22 High EX1415 \$119.00**

## Ring Inserts

Inserts make the 30mm rings into 1" rings.

**#37 EX1385 \$29.00**



## Grips , Mounts and Accessories



### Gripwell™

The Gripwell™ gives the operator an advantage in CQB over the "traditional" vertical foregrip. This is accomplished by using a super tight vertical grip which produces a natural tendency to keep the elbow in tight. This in turn keeps the operator from making accidental contact with other entry team members or hitting objects causing an accidental "sweeping" of a teammate.

GW01A-BLK	Black	\$29.99
GW01A-GRN	Green	\$34.99



### Ambidextrous Receiver End Plate For One Point Sling

EC0057 \$12.00



### Sling Mount Quick Detach

Front sling mount for quick release sling swivels requires no modification. Fits all floating & non-floating handguards. This sling mount attaches through top or bottom vent holes in standard hand guard and allows for the quick removal of the sling when cleaning or when upper and lower receivers are separated. The parts are all steel with a black phosphate finish.

FSLINGM \$14.00



### KNS Firing Pin Retaining Pin

Replaces standard cotter pin found in the bolt carrier to retain the firing pin as in original Stoner rifles.

PERMA \$7.95



### PRI Gas Buster

This patented safety device is absolutely essential when employing any sound suppressor on any M-15™ or AR-10® based system.

AR-10®	10008100	\$90.00
M-15™	15008100	\$89.00



### MechArmor Tech Ops

Ambi design aids in charging weapon from unconventional positions; won't interfere with large optics. Extended ambidextrous charging handle is large enough to clear oversized sniper/target optics. Easy to operate with minimal body

movement in confined spaces and any position. The stainless steel latch spring ensures the latch locks down tightly to resist potential blowback—and stays locked—until you release it.

M-15™	TACOPS-2	\$105
AR-10®	TACOPS-1	\$105



### Hogue Pistol Grip

Rubber grip with finger grooves and ArmaLite Logo. Fits all ArmaLite rifles.

15000 \$24.95



### KNS Buttstock Sling Swivel

The rear sling mount is made of steel with a black phosphate finish and will attach to an AR15, M16, and MOST carbines with no modifications to the rifle. The rear sling mount features a quick release and will fit some CAR stocks. It replaces the rear sling loop and attaches with original bottom butt plate screw. This allows quick removal of sling when receivers are separated.

RSLINGM \$14.00



### KNS Trigger Screw Gen 2 Mod 2

These are the Generation 2 Mod 2 pin sets. They are the STRONGEST pins that can be produced and were designed to withstand the high impact of full and semi-automatic 9mm and .223 suppressed weapons.

The pins are stainless steel pins. End retainers are black oxide. An absolute must-have for all M-15 owners. Special anti-creep retainers prevent wear on your M-15 receiver. Pin installation tool & 2 Allen wrenches included. No modification to gun required.

NRTHPMOD2154 \$32.00



### KNS Trigger Group Pins Non-rotate Gen 2

These are the Generation 2 pin sets. These are the STRONGEST pins that can be produced and were designed to withstand the high impact of full and semi-auto 9mm and .223 suppressed weapons. The pins are

stainless steel pins. End retainers are black oxide. Connectors have phosphate finish. An absolute must-have for all M-15 owners. Special anti-creep retainers prevent wear on your M-15 receiver. Pin installation tool & 2 Allen wrenches included. No modification to gun required.

NRTHP154 \$32.00



### Twang Buster

Made from tough derlin this buffer pad fits in buffer tube to reduce the "annoying twang" that the rifle produces. Works with both rifle and carbine length buffer tubes.

TB2010 \$5.00



### Ambidextrous Safety Selector

EX0097 \$40



## MAGPUL CTR

The Magpul CTR (Compact/Type Restricted) – Mil-Spec Model is a drop-in replacement butt stock for carbines using mil-spec sized receiver extension tubes. Designed for light, fast action the streamlined A-frame profile avoids snagging and shields the release latch to prevent accidental activation. The extra-power lock mechanism uses a premium chrome-silicon spring to avert auto-collapse failure and maintains

strength by resisting spring relaxation. The CTR also features a supplemental friction lock system that minimizes wobble for enhanced weapon stability and accuracy. The Mil-Spec Model includes a standard 0.30" rubber butt-pad which provides positive shoulder grip to prevent slippage even with body armor or modular gear. Made in U.S.A.

**10707060 \$97.00**



## MAGPUL PRS

The Magpul PRS (Precision Rifle/Sniper) – AR10/SR25 Model is a drop-in, precision-adjustable butt stock especially designed for the longer charging handle throw of 7.62 NATO platforms. Designed to offer the fine-tuned, customized feel of a precision target stock, the PRS is

adjustable for both cheek riser height and length-of-pull without sacrificing the durability necessary to withstand the operational environment. Compared to the A2 stock, the PRS can shorten the LOP by 0.25" or extend it by 0.75".

Machined aluminum adjustment knobs feature positive-locking click detents to maintain position under recoil and allows easy, tool-less adjustments by simply rotating the knobs. Machined aluminum butt-plate and alloy steel adjustment shaft provide stability and strength to withstand severe impact conditions. Rubber butt-pad offers positive shoulder grip to prevent slippage for optimal accuracy even with body armor or modular gear. Bottom Picatinny-type rail allows for monopod use, additional sling mounts or storage. Stock includes all mounting hardware for A1/A2 type rifles with fixed stock. Made in U.S.A.

**Black 10701040 \$255.00**  
**Green MAG307-ODG \$255.00**



## MAGPUL ACS

The patent-pending Magpul ACS (Adaptable Carbine/Storage) – Mil-Spec Model is a drop-in replacement butt-stock for carbines using mil-spec sized receiver extension tubes. A streamlined, anti-snag profile shields the release latch to prevent accidental activation and the extra-power lock mechanism uses a premium

chrome-silicon spring to avert auto-collapse failure by resisting spring relaxation. Similar to the Magpul CTR™, the ACS also features a supplemental friction lock system that minimizes wobble\* for enhanced weapon stability and accuracy. Dual, rear accessible, water-resistant battery storage tubes and an integral storage compartment in the butt of the stock provides multiple storage options. The ACS comes standard with a 0.30" thick rubber butt-pad which provides positive shoulder grip to prevent slippage even with body armor or modular gear. Made in U.S.A

**MAG370-BLK \$134.95**



## Ace Hammer Stock

World's Strongest AR15 Stock. Machined from heat treated aircraft aluminum. Laser etched position mark. 7 Positions tube to ensure the perfect fit. 2 QD sling swivel holes & 1 sling loop. 4 Ball bearings to ensure smooth tube

transitions. Locking adjustment trigger. Adjustable cheek rest. CQB butt plate or soft rubber pads.

**THSTOCK2010 \$306.00**



## ACE Skeleton Stock

This anodized aluminum buttstock is lighter than a standard stock while still retaining high strength and durability. A closed-cell foam overtube provides a comfortable cheek weld and insulates the

shooter's face from vibration and temperature extremes. Uses a standard A1/A2 receiver extension tube, buffer and spring (not included).

**ARFX \$79.99**

# 22 Conversion Kits

ArmaLite now offers a .22LR conversion kit that fits all M-15 upper receivers. With a conversion kit installed, shooters can now practice with their M-15's using .22LR ammo that's ONE TENTH the cost of .223 ammo! The conversion kits are available in both carbon steel and stainless steel. 26 round magazines and 10 round AWB magazines are also available.



## Carbon Steel 22 Conversion Kits

**22LRCST26 \$169.00**  
**22LRCST10 \$169.00**



## Stainless Steel 22 Conversion Kits

**22LRSST26 \$199.00**  
**22LRSST10 \$199.00**



## Harris Bipod (S-BR model)

Small benchrest bipod. Attaches to the sling swivel. Adjust 4-7 inches. Folds for easy storage.

**LAW2030 \$124.34**



## Harris Bipod (S-LM model)

Attaches to the sling swivel. Adjusts 9-13 inches with adjustable, lockable cant. Folds for easy storage.

**LAW2040 \$127.00**

## AR-50™ and AR-30™ Accessories



### Allied Precision Arms

#### Competition Bipod for AR-50™ and AR-30™

This new heavy duty bipod is a solid mount for the AR-50. 17" wide stance for a solid base, low profile for prone and bench shooting, and cants for uneven ground. This bipod is built strong and features adjustable, lockable cant, lock rings to secure legs and folds for transport. Barrel center line in 9.5".

APA Bipod      EX3206      \$250.00



### Allied Precision Arms Adjustable Leg Extension

Quick to attach, these legs are 6 inches long and adjust in half inch increments. At the lowest position barrel center line is 10.75" with a footprint of 18.75". At the highest position the barrel center line is 12.5" with a footprint of 24.5". Barrel height increases in .25" for each adjustment hole.

EX3208      \$89.00



### Allied Precision Arms AR-50™ Quick Adjust Recoil Pad

Once installed you can adjust the recoil pad quickly by loosening one bolt instead of 2 screws. Quickly readjust for different shooters or type of shooting.

EX3211      \$19.95



### Allied Precision Arms AR-50™ Carry Handle

No disassembly of the rifle is required. Once the carry handle is assembled, it has a quick release to remove and quickly reattach as needed.

EX3204      \$150



### Prince Bipod with Adapter

EX3200      \$213



### AR-50™ and AR-30™ Scope Base

Steel Picatinny Rail Attachment. Includes scope base and screws.

#### AR-50™

15 Minute Base ( 0 to 1000 yds)	AR500361	\$80.00
30 Minute Base (500 to 1500 yds)	50809330KIT	\$80.00
50 Minute Base (1000 to 2000 yds)	AR500365	\$80.00

#### AR-30™

10 Minute Base	30910000KIT	\$70.00
----------------	-------------	---------



### AR-30™ 5 Round Magazine

.300 & 338	30601005338	\$68.00
.308	30601005308	\$75.00



### Allied Precision Arms Quick Adjust Monopod

For use with the AR-50, this monopod has a quick adjust feature to set the height quickly and a screw to dial in exact height.

Quick Adjust Monopod      EX3203      \$162.00



### AR-50™ Length of Pull Adjustments

50702115      \$32.00



### AR-50™ Buttstock Assembly

50708030KIT      \$215.00

### AR-30™ Buttstock Assembly

30701010      \$140.00





### AR-50 Starlight Case

Starlight Case with Foam Cut Inserts

EX1850 \$296.00

### Gear 50 Package

Includes: Scope Mounts, Pro-Shot Cleaning Kit, Starlight Case with Foam Cut Inserts

Gear 50 \$399.00

Buttstock and scope must be removed to fit in case



AR-50™ Soft Case, Black

HWC 62 BLK

\$189.95

AR-50™ Soft Case, Green

HWC 62 OD

\$189.95



### Galati Tactical Rifle Cases

Heavily padded with a total thickness of 2 1/2" of close cell foam. Also features an extra rib of padding by the nose area of the case. Features five extra magazine pockets as well as an accessory pocket. The extra long padded shoulder strap attaches to the "D" ring. Fully lockable and will float with your rifle in it. Fits guns with scopes 12" in height.

42" Tactical Case Galati

LAW3510

\$63.00

37" Tactical Case Galati

LAW3490

\$63.00



### Pro-Shot 223 and 308 Universal Cleaning kit

UFIELD-223

\$35.95

UFIELD-308

\$35.95



### Compact GI Cleaning Kit

223 and 308 packs up and fits in the A2 buttstock.

.223 Caliber - EX3232

\$18.00

.308 Caliber - EX3233

\$21.50.



### AR-30™ Starlight Case

Starlight Case is cut to fit the AR-30 with buttstock on. Must remove the scope before fitting into case.

EX1845 \$430.00



### AR-10® Starlight Case

10904020R

\$345.00

Upper and lower must be separated before fitting into case.



### Pro-Shot 50 Cal. Cleaning kit

Kit comes with everything you will need to clean your AR-50A1™.

CP1805 \$44.00



### Otis Cleaning Kit with Soft Case

.308 caliber.

CP0080 \$36.15





### Universal Vise Jaws

ArmaLite's Flat Top Vise Jaws are a new, unique set of Jaws that we developed specifically to hold all flat top AR-10® and M-15™ upper receivers (including our new SPR Mod 1). These Jaws hold the upper receiver in a sideways horizontal position, making barrel replacement easier and more secure than ever before. These Jaws clamp onto the top and bottom of the upper receiver, so there is less chance of deforming the upper receiver when using them. However, it is still important not to clamp the vise too tightly.

15901202 \$38.00



### AR-10® Free Float Barrel Nut Wench

10901012 \$25.00

### M-15™ Free Float Barrel Nut Wench

15901012 \$25.00



### ArmaLite Magwell Block

ArmaLite's Magwell Block clamps into any vise and supports any AR-10® or M15™ rifle or carbine by its magazine well. The firearm will be held in its upright, horizontal position. The Block is manufactured from a non-marring non-metallic material. Our Block makes it easy to adjust your sights or to work on any components in the lower receiver.

10901210 \$35.00



### M-15™ Upper Receiver Vise Jaws

ArmaLite's M15 Vise Jaws are similar to the U.S. military's vise jaws. They will hold any M-15™ Upper Receiver (EXCEPT OUR SPR MOD 1 SERIES) in an upright, horizontal position. However, unlike the military jaws, the ArmaLite Jaws are made from a nonmetallic material so, properly employed, they shouldn't damage the finish on your firearm. They are primarily used when changing barrels. These Jaws clamp on the sides of the upper receiver.

EX1616 \$53.00



### AR-10® Upper Receiver Vise Jaws

ArmaLite's AR10® Vise Jaws are identical to the M15 Jaws, except that they are enlarged to hold any AR-10® Upper Receiver. As with the M15™ Jaws discussed above, these Jaws clamp on the sides of the upper receiver.

EX1615 \$53.00



### Front Sight Post Tool

EX0110 \$7.95



### ArmaLite Can Koosie

KOOSIE \$1.50



### ArmaLite Hats.

Logo Hats with AR-10® rifle on the side. 3 varieties. Black with silver stitching, tan with color logo and a new grey hat with light front and grey bill. One size fits all.

EXC003	Black Hat	\$12.00
EXC004	Tan Hat	\$12.00
EXC001	Grey and Stone	\$12.00



### ArmaLite Long Sleeve Shirts.

Forest Green, Navy Blue, Pink, Black, and OD Green Long Sleeve shirts have a small logo on the left front, a large logo centered on the back and ArmaLite Inc. down the sleeve. A great shirt for the range and makes a great gift. See [www.ArmaLite.com](http://www.ArmaLite.com) for sizes and part numbers. \$19-\$21



### ArmaLite Short Sleeve Shirts.

Available in the same colors pictured for the long sleeve shirts plus yellow. Short sleeve shirts have a small logo on the left front, and a large logo centered on the back. A great shirt for the range and makes a great gift.

See [www.ArmaLite.com](http://www.ArmaLite.com) for sizes and part number.  
\$13 - \$16

## ArmaLite Technology

ArmaLite's strength is its ability to manufacture a rifle that is 100% ArmaLite. From that original ArmaLite design we are able to make constant refinements because of our understanding of ordnance principle and through extensive development and testing. Today's AR-10's are the best 7.62MM on the market utilizing innovations that have changed the industry. From its load leveled bolt™ to the design of the midlength gas system the AR-10® midlength carbine is the most reliable heavy hitting rifle on the market.

### 8" Midlength Gas System

The 8" gas system assures optimal transfer of gas from the gas tube to the bolt carrier resulting in consistent cyclic rates

### Load Levelled™ Bolt

Spreads firing loads evenly over bolt lugs for increased strength.

### Picatinny Rail Upper Receiver

Standard on all A4 models. ArmaLite receivers are forged with forward assist and Mil Spec Picatinny rail providing a stable sighting platform.

### A2 Birdcage Flash Suppressor

Threaded 5/8 - 24

### Extractor System

Increase reliability of extraction and ejection.

### M4 Feed Ramps

Standard on all ArmaLite AR-10® and M-15™ models providing consistent feeding.

### Chrome Lined Barrel

Each ArmaLite barrel is custom built to ArmaLite blueprints by a team of Design Engineers and Quality Assurance Engineers dedicated to consistent quality and accuracy.

### Clamping Gas Block

Allows perfect centering of the rear sight.

### Generation 2 Magazines

5, 10, 15, 20, and 25 round magazines:  
New in 2008, redesigned and AR-10® specific.  
Designed for superb feeding and reliability of bolt catch operation.

### ArmaLite 2 Stage Trigger

ArmaLite's newest 2 stage trigger system for consistent pull. Comes standard on all AR-10® and M-15™ models.

### G1 Carbine Extension Tube

With a 6 position collapsing stock ArmaLite utilizes G1 extension tubes standard on all carbine models.



### Orders Accepted by Phone, Fax, Mail, E-mail or on our Website

All payments should be by Visa, Mastercard, Discover, Cashiers Check or Money Order unless company check or credit terms have been pre-approved by ArmaLite. Illinois residents must add Sales Tax or provide State Tax number.

### FFL HOLDERS

ArmaLite requires a current FFL before processing dealer orders.

### ADDITIONAL TERMS AND CONDITIONS

These instructions do not contain all of the terms and conditions set forth by ArmaLite. Please refer to ArmaLite, Inc. Terms and Conditions of Sale, available at no charge from ArmaLite upon request or via our website. All prices, specifications, terms and conditions are subject to change without notice.

### RETURNS

Returns for repair, warranty or refund will not be accepted without an RMA number issued by ArmaLite. Please call 1-800-336-0184 to receive an RMA number. NOTE: All returns for refund are subject to a restocking fee of 15% or \$25.00 whichever is greater. All Items are non-refundable after 30 days. Freight charges are not refundable. Shipping fees will be applied to exchanged product.

### www.ArmaLite.com

Please visit our new and improved website at [www.ArmaLite.com](http://www.ArmaLite.com) for much more information. At our website, you can find current pricing on all of our firearms, components, and accessories. You can purchase parts and accessories. You can learn about our Policies and detailed Contact Us information. You can also find the most complete set of answers to FAQs in the industry. Our website Library contains the history of ArmaLite, owner's manuals for all of our firearms, and dozens of technical notes that can greatly enhance your knowledge of our firearms and of firearms in general.

### ArmaLite Inc.

PO Box 299  
Geneseo, IL 61254

### Order Information:

Hours:  
Monday thru Friday  
8:00 am - 4:15 pm Central Time

### Order contacts:

Phone: 800-336-0184  
Fax: 309-944-6949  
Web: [www.ArmaLite.com](http://www.ArmaLite.com)  
[sales@armalite.com](mailto:sales@armalite.com)  
[info@armalite.com](mailto:info@armalite.com)



**ArmaLite, Inc.**  
**PO Box 299**  
**Geneseo, IL 61254**



**PH. 800-336-0184**  
**FAX 309-944-6949**  
**Sales@ArmaLite.com**  
**Info@ArmaLite.com**  
**[www.ArmaLite.com](http://www.ArmaLite.com)**



Shown with third-party sound suppressor, bipod, scope mount, and scope