



COMMERCIAL PRODUCTS

ATK Commercial Products features a unique collection of brands that gives shooting and outdoor enthusiasts everything they need in one place. From ammunition, optics

and reloading equipment to gun cleaning chemicals and accessories, we offer advanced, high-performance products. Look for these leading brands:



AMMUNITION BRANDS



ACCESSORIES BRANDS



We proudly support: Ducks Unlimited, Pheasants Forever, The National Wild Turkey Federation, The Rocky Mountain Elk Foundation, Safari Club International, Delta Waterfowl, Izaak Walton League of America, Whitetails Unlimited, The Ruffed Grouse Society, Becoming an Outdoors Woman, Women in The Outdoors, 4-H Shooting Sports Program, The Boy Scouts of America, International Hunter Education Association and Civilian Marksmanship Program, The Congressional Sportsmen Foundation and the NRA.

CCI • 2299 Snake River Avenue • Lewiston, ID 83501

© 2009 CCI • Printed in U.S.A.

For technical questions call Product Service 1-866-286-7436 • www.cci-ammunition.com

THE LEADER IN RIMFIRE AMMUNITION®
www.cci-ammunition.com

WELCOME TO CCI®

THE LEADER IN RIMFIRE AMMUNITION®

At CCI®, we always think it's worth taking a closer look. Paying attention to every little detail is just one of the ways we've become The Leader in Rimfire Ammunition®. No matter what type of shooting or hunting you're doing, we have a special load, bullet or payload that is your best option.

This year, we're proud to bring you a non-lead solution in .22 Long Rifle. This new round fills a void that has been around for a few years: a non-lead plinking option with reliable accuracy. See our Competition, Target and Plinking section for more details.

We're also excited to bring you another non-lead TNT® Green™ option, this time in 17 HMR. The TNT Green has proven itself as a flat-shooting, accurate bullet that is devastatingly explosive on impact. Combining this with a fun, effective and make-sense caliber like the 17 HMR means plenty of unhappy critters.

World-renowned IPSC champion Eric Grauffel is still winning every competition he enters, and doing it all with the unbelievably consistent CCI primer. Grauffel has shot well over 2 million rounds through his gun without a misfire. This combination of his speed, skill and talent and the quality of CCI primers is definitely worth a closer look.

As always, CCI brings you the finest, most-advanced and diverse lineup of rimfire products available. Thanks for shooting CCI.

over
2 MILLION
rounds without a MISFIRE
see what
Eric Grauffel
is up to now...

... see page 12 for details.



17 HMR TNT® GREEN™ & .22 LR SHORT RANGE GREEN™

Look for these exciting non-lead options from CCI®.

17 HMR WARNING: To avoid serious injury: (1) do not use in semi-automatic firearms without consulting with your firearms manufacturer; use only in modern firearms in good condition marked for 17 HMR cartridges; (2) use only ammunition in good condition; (3) always be sure barrel is free of any obstruction; the barrel should be checked in case of light recoil, or an unusually loud or weak sound heard during firing; (4) wear eye and ear protection; (5) if gun fails to fire, avoid exposure to breech when unloading and point muzzle in a safe direction; keep firearm pointed in safe direction at all times; (6) discharge may occur if rim is struck; handle with caution, do not drop; (7) to prevent ricochet, do not shoot at hard surfaces or water; (8) bullet is capable of traveling extreme distances; know your backstop; (9) store in cool dry place.

.22 LR SHORT RANGE GREEN WARNING: Accurate to 50 yards, maximum range ¾ mile. Use in ANSI Sporting Chambers only—DO NOT USE IN MATCH CHAMBERS. May not function in all semi-automatic firearms.

IN THIS CATALOG:

CCI VARMINT AMMUNITION	2-3
CCI SMALL GAME AMMUNITION	4-5
CCI COMPETITION, TARGET & PLINKING AMMUNITION	6-7
CCI PEST CONTROL/SPECIALTY AMMUNITION	8-9
CCI RIMFIRE CONSTRUCTION/TIPS	10
CCI LOAD CHART	11
ERIC GRAUFFEL FEATURE	12
CCI PRIMERS	12-13

CCI®

THE LEADER IN RIMFIRE AMMUNITION®

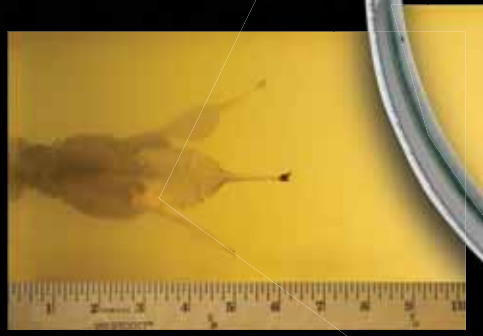
CCI VARMINT AMMUNITION

The evidence is in the lineup. One look is all it takes to know that CCI® understands what varmint hunters desire. Our Varmint Ammunition line features a variety of bullet technologies that are designed for the same goal: total devastation on impact.

Our V-Max®, TNT® and TNT® Green™ offerings are designed for explosive expansion, while products like Mini-Mag® and Maxi-Mag® offer controlled expansion and excellent energy transfer. And then there's the Segmented Hollow-Point. On impact this projectile breaks into three parts: each one forming its own wound channel. These top-of-the-line bullets are also very accurate, so small targets aren't a problem. If you can't find your ideal varmint load on this page, you better take a closer look.

SEGMENTED HOLLOW-POINT

The Segmented Hollow-Point and its unique design gives varmint hunters excellent performance. As you see here, this bullet breaks up into three parts on impact. Each one acts like its own projectile and creates a distinct wound channel to bring your target down hard. This bullet is ideal when you want maximum damage on impact.



.22 LR Segmented HP, 6" penetration, 10-grains retained weight per segment.



V-MAX®

- Flat-shooting
- Accurate
- Explosive expansion



MAXI-MAG®

- Clean-burning propellants
- Maximum velocities
- Maximum energy transfer on impact



STINGER®

- Hypervelocity leader
- Loaded within industry standard pressures
- Anchors varmints fast



MINI-MAG®

- Original CCI® offering, still the most popular
- Reliable feeding
- Great penetration



TNT®

- Explosive on impact
- Minimal mid-range rise
- Nearly identical point of aim to V-Max® in 17 HMR



TNT® GREEN™

- Lead-free bullet
- Explosive terminal performance
- Match-grade accuracy



SHORT HOLLOW-POINT

- A CCI® original
- Great stopping power
- Reliable expansion



SEGMENTED HOLLOW-POINT

- Impressive terminal effect
- Bullet breaks into three-parts on impact
- Each segment creates its own wound channel



VARMINT					
Cartridge/Product Name	Part No.	Caliber	Bullet Style	Wt. (grs)	Muzzle
17 MACH 2	0048	17 MACH 2	POLY-TIP V-MAX	17	2010
17 HMR V-MAX®	0049	17 HMR	POLY-TIP V-MAX	17	2550
17 HMR TNT®	0053	17 HMR	JHP	17	2550
NEW 17 HMR TNT® Green™	0951	17 HMR	TNT GREEN HP	16	2500
STINGER®	0050	22 LONG RIFLE	CPHP	32	1640
MAXI-MAG® HP+V	0059	22 WIN. MAG.	JHP	30	2200
MAXI-MAG® HP	0024	22 WIN. MAG.	JHP	40	1875

Do not use 17 HMR ammunition in semi-automatic firearms without first contacting your gun manufacturer. See page one for more information.

VARMINT					
Cartridge/Product Name	Part No.	Caliber	Bullet Style	Wt. (grs)	Muzzle
22 MAXI-MAG® TNT®	0063	22 WIN. MAG.	TNT JHP	30	2200
22 MAG V-MAX®	0073	22 WIN. MAG.	POLY-TIP V-MAX	30	2200
SEGMENTED HP	0064	22 LONG RIFLE	SHP	32	1640
SHORT HP	0028	22 SHORT	CPHP	27	1105
22 MAG TNT® GREEN™	0060	22 WIN. MAG.	TNT GREEN HP	30	2050
SEGMENTED HP SUB-SONIC	0074	22 LONG RIFLE	SHP	40	1050
MINI-MAG™ HP	0031	22 LONG RIFLE	CPHP	36	1260

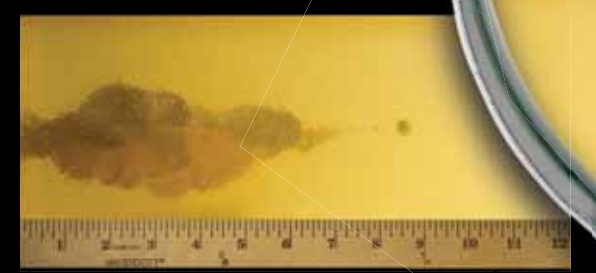
CCI SMALL GAME AMMUNITION

When small animals are harvested for their hide or the kitchen table, clean holes and minimal meat damage is important. CCI® understands the needs of pelt and meat hunters, and has designed the Small Game Ammunition line with them in mind.

These targets are already small enough, so keeping hide damage or meat spoilage to a minimum is very important. Velocitor® is a tough bullet that gets great penetration without unneeded collateral damage. Another unique offering from CCI is the Small Game Bullet (SGB). This provides more stopping power than round nose bullets, but won't cause the damage associated with some hollow-points. And in outlying urban areas or where noise is an issue, look to the effective Sub-Sonic .22 LR offering. It gets reliable expansion and good performance on small game without significant noise.

17 HMR GAMEPOINT®

The GamePoint® bullet is designed like many leading big game bullets—its controlled expansion will stop game in its tracks without ruining the parts of the animal you're after. When you intend to keep your animal, this bullet is the right choice.



17 HMR GamePoint®, 8.5" penetration, 19-grains retained weight.



GAMEPOINT®

- "Dimple-Tip" expands like big game bullet
- Minimal meat and hide damage
- Accurate, powerful

FMJ

- Punches clean holes
- 17 HMR option is CCI® exclusive
- Very accurate

SMALL GAME BULLET

- Better stopping power than round nose bullets
- Flat nose creates cylindrical wound channel
- Less meat spoilage

SUB-SONIC HP

- Low noise
- Bullet expands without fragmenting
- Great performance on small game

VELOCITOR® HP

- Excellent weight retention
- Impressive downrange energy
- Deep penetration

SMALL GAME					
Cartridge/Product Name	Part No.	Caliber	Bullet Style	Wt. (grs)	Muzzle
17 HMR	0055	17 HMR	FMJ	20	2375
17 HMR GAMEPOINT®	0052	17 HMR	JSP	20	2375
22 MAG GAMEPOINT®	0022	22 WIN. MAG.	JSP	40	1875

Do not use 17 HMR ammunition in semi-automatic firearms without first contacting your gun manufacturer. See page one for more information.

SMALL GAME					
Cartridge/Product Name	Part No.	Caliber	Bullet Style	Wt. (grs)	Muzzle
VELOCITOR® HP	0047	22 LONG RIFLE	CPHP	40	1435
SGB (SMALL GAME BULLET)	0058	22 LONG RIFLE	LFN	40	1235
SUB-SONIC HP	0056	22 LONG RIFLE	LHP	40	1050

CCI[®] COMPETITION

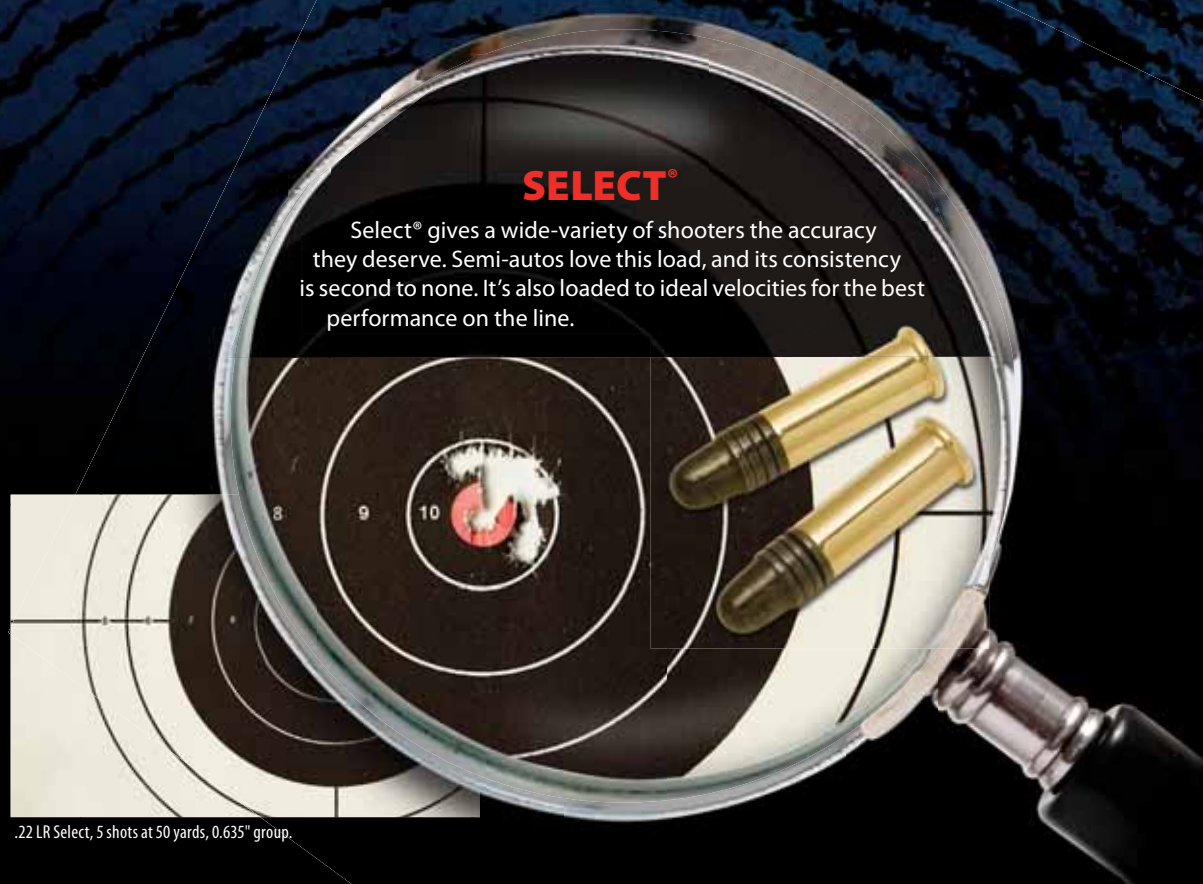
TARGET & PLINKING

For some, rimfire rifles mean casual shooting and plinking at the range or in the backyard. For others they mean the most intense competition there is. CCI's Competition, Target and Plinking line offers loads ideal for each discipline.

New this year, we introduce a non-lead .22 LR plinking option. Short Range Green[™] features a jacketless bullet made of a copper particle and polymer mix. It gets reliable accuracy in common rifles out to 50 yards, and is great for the range.

When you're on the competition line, every shot, trigger pull and windage adjustment gets a closer look. Accurate and ultra-consistent ammunition is the only option here. Green Tag[®] was designed exclusively for competition, and is popular in both rifles and pistols. Our Select[®] is optimized for semi-autos and is known for impressive consistency.

For the backyard plinker, a consistent and affordable product is what matters most. CCI[®] carries the ideal loads for these shooters. Mini-Mag[®] gives shooters a product that is reliable enough to hit any target you're after, but it won't put a big hit on your wallet. And the Standard Velocity is loaded to the velocities of Green Tag for affordable practice. CCI even loads the industry's only .22 Long, which is definitely worth a closer look.



.22 LR Select, 5 shots at 50 yards, 0.635" group.



.22 SHORT

- High velocity
- Copper-plated for clean bores
- Great accuracy, performance

MAXI-MAG[®] TMJ[®]

- Consistent performance for plinking
- Utilizes sure-fire priming technology
- Jacket seamlessly encases lead core for accuracy

.22 LONG

- A CCI[®] exclusive
- Only .22 long available
- Very reliable

MINI-MAG[®]

- Original CCI[®] offering, still the most popular
- Reliable feeding
- Clean-burning powder won't foul barrel

GREEN TAG[®]

- Ultimate in accuracy
- Suitable for rifles or pistols
- Designed exclusively for competition

PISTOL MATCH

- Proven accuracy in handguns
- Precision components
- Top-of-the line functionality

STANDARD VELOCITY

- Affordable practice
- Same velocity as Green Tag[®]
- Consistent performance

SELECT[™]

- Outstanding performance in semi-automatics
- Impressive consistency
- Optimal velocity for accuracy

SHORT TARGET

- Accurate and reliable to meet competition demands
- Specialized for IRF pistol competition
- Positive functioning without big recoil

.22 SHORT RANGE GREEN[™]

- Non-lead .22 LR plinking option
- Made of copper particle/polymer mix
- Reliable accuracy at 50 yards

COMPETITION

Cartridge/Product Name	Part No.	Caliber	Bullet Style	Wt. (grs)	Muzzle
SELECT [™]	0045	22 LONG RIFLE	LRN	40	1200
GREEN-TAG [®]	0033	22 LONG RIFLE	LRN	40	1070
PISTOL MATCH	0051	22 LONG RIFLE	LRN	40	1070
SHORT TARGET	0037	22 SHORT	LRN	29	830

TARGET/PLINKING

Cartridge/Product Name	Part No.	Caliber	Bullet Style	Wt. (grs)	Muzzle
SHORT	0027	22 SHORT	CPRN	29	1080
MAXI-MAG [®]	0023	22 WIN. MAG.	TMJ	40	1875
MINI-MAG [™]	0030	22 LONG RIFLE	CPRN	40	1235
LONG	0029	22 LONG	CPRN	29	1215
NEW! SHORT RANGE GREEN [™]	0952	22 LONG RIFLE	GREEN HP	21	1650
STANDARD VELOCITY	0032	22 LONG RIFLE	LRN	40	1070

Use 22 LR Short Range Green in ANSI Sporting Chambers only—DO NOT USE IN MATCH CHAMBERS. May not function in all semi-automatic firearms.

CCI® PEST CONTROL/SPECIALTY

When you take a closer look at the needs of shooters, you find that there are several unique options that make sense. Rimfire and centerfire pistol shotshells are perfect examples, and set us apart from everyone else. Pests can be hard-to-hit problems. Our shotshell options are excellent answers at short range. CCI® also has an industry exclusive in the Pest Control/Specialty line—.22 WRF with a jacketed hollow-point bullet. This load combines a 19th century favorite and 21st century technology and is ideal for old barrels.

When pests present themselves a bit farther out, the CB Long's accuracy makes it an ideal choice. This caliber is also fun for plinking. CCI® knows that there are even times when no bullet at all is the best choice. Our Noise Blank is available and can be used in any gun chambered for .22 Short, Long or Long Rifle.

HANDGUN SHOTSHELL

Centerfire Handgun Shotshells are ideal for close-range pests. They give shooters a big advantage over a single-projectile. They're available in all the common handgun calibers and make perfect sense when pests or varmints are causing problems.



.44 Magnum/S&P Shotshell, 3.5" penetration, 140 pellet payload.



RIMFIRE SHOTSHELL

- Consistent patterns
- Easier hits on pests
- Only .22 WMR shotshell load on the market

CB

- More effective at longer ranges on pests
- Accurate
- Great plinking loads

CENTERFIRE HANDGUN SHOTSHELL

- Great for close-range pest control
- Packed in reusable boxes of ten shotshells
- Available in a variety of calibers

NOISE BLANKS

- Great for training
- Clean-burning propellant
- Work in any firearm chambered for .22 Short, Long or Long Rifle

.22 WRF JACKETED HOLLOW POINT

- 19th Century favorite with 21st Century technology
- Only .22 WRF JHP in the industry
- Copper composition and special base make it ideal for old barrels

PEST CONTROL (CENTERFIRE SHOTSHELL)							
Caliber	Part No.	Shot Size	Approximate Payload, Wt. Grs. †	4" Barrel	5" Barrel	6" Barrel	Box Ct.
9MM LUGER	3706	#12	53	1450	—	—	10
38 SPL/357 MAG**	3709	#9	109	—	—	1000	10
40 S&W*	3970	#9	88	1250	—	—	10
44 MAG/SPL**	3979	#9	140	—	—	1000	10
45 AUTO*	3567	#9	117	—	1100	—	10
45 COLT**	3972	#9	150	—	—	1000	10

Intended for short-range pest control; not recommended for self-defense

†—actual shot charge determined by volume; approx. weights provided for reference only

*—40 S&W and 45 Auto use an extended cartridge case instead of a plastic capsule; 45 Auto shotshell is not intended for revolvers, **—may not function properly in rifles

WARNING: Do not use these or any other shot cartridge in handguns having ported recoil compensators

PEST CONTROL					
Cartridge/Product Name	Part No.	Caliber	Bullet Style	Wt. (grs)	Muzzle
22 LR SHOTSHELL	0039	22 LONG RIFLE	#12 SHOT	31	1000
22 WMR SHOTSHELL	0025	22 WIN. MAG.	#12 SHOT	52	1000

SPECIALTY					
Cartridge/Product Name	Part No.	Caliber	Bullet Style	Wt. (grs)	Muzzle
CB SHORT	0026	22 SHORT	LRN	29	710
CB LONG	0038	22 LONG	LRN	29	710
NOISE BLANK	0044	BLANK	—	—	—
22 WRF †	0069	22 WRF	JHP	45	1300

†—not for revolvers. Most 22 WRF revolvers have undersized bores that cannot use a jacketed bullet. Performance data derived from industry test barrels; provided for reference. Velocities from production firearms may vary. Specifications subject to change without notice

CCI RIMFIRE CONSTRUCTION

Rimfire cartridge illustration shown here is the .22 Long Rifle Mini-Mag™, part number 0030.

Clean-burning powder delivers optimum velocity while maintaining consistent chamber pressures

Copper-plated bullet reduces fouling and enhances accuracy

Super-hard bullet lube is applied to all CCI® rimfire to further eliminate fouling

Cases are crimped to secure bullet—allowing for consistent pressures and velocities

Clean-burning priming mixture ensures uniform and reliable ignition

CCI RIMFIRE TIPS FOR SUCCESS

- **Safety first when shooting!** Always wear eye and ear protection. Rimfire bullets can travel up to two miles. Treat every rimfire firearm with the same respect you afford your most powerful rifle or handgun.
- **Match your ammunition to the sport.** Choose solid lead or TMJ® bullets for edible game, hollow points for varmints and lead round nose for competition shoots. See the rimfire reference table for usage recommendations.
- **Sight in most hunting rifles for 50 yards.** The bullet rise between the muzzle and 50 yards is very small, so you can use the same sight picture over that range. For open-country varmint shooting, consider a 75 yard sight-in for .22 Long Rifle, and a 100 yard sight-in for the Magnum rimfires.
- **Clean that gun!** Most rimfire malfunctions can be traced to poor gun maintenance. When you clean the bore, also clean the action. Excess residue or lubricant in the action can cause misfires and feeding problems.
- **Gun condition is everything!** There are many poor quality or badly worn .22 rimfire firearms in circulation that should have been rebuilt or retired years ago. Shooting them with ANY ammunition could be hazardous. When in doubt, consult the firearm's manufacturer or a competent gunsmith.
- **Revolvers have barrel/cylinder gaps.** The industry MAXIMUM permissible gap is a mere 0.012 inch—that's just three sheets of standard copier paper. A gap larger than this can mean a bullet fails to

leave the barrel, resulting in a hazardous barrel obstruction. Revolvers with oversized gaps must not be fired with ANY ammunition until repaired.

- **Try different types of ammunition when looking for accuracy.** There are many makes of rimfire firearms with a wide variety of rifling patterns. That makes them very sensitive to the ammunition type. CCI® has plenty of choices to help you in that quest.
- **Take care of your ammunition.** Store away from moisture, heat, and oils. Keep ammunition in the original boxes. CCI's innovative plastic box protects ammunition better than the cardboard boxes other companies use.

Cartridge/Product Name	Part Number	Caliber	Bullet Style	Wt. (grs.)	Muzzle	Velocity, ft/sec 50 yds100 yds	Est. Handgun	Muzzle	Energy, ft-lb 50 yds100 yds	Trajectory* 50 yds75 yds100 yds	Box Ct.	Special Features					
VARMINT																	
17 MACH 2	0048	17 MACH 2	POLY-TIP V-MAX	17	2010	17241471	1710	152	112	82	-0.1	0.7	0.8	0.0	50	Fast, Flat-Shooting, Accurate, No Recoil	
17 HMR V-MAX®	0049	17 HMR	POLY-TIP V-MAX	17	2550	22201915	2040	245	186	138	-0.5	0.1	0.3	0.0	50	Deadly on Varmints	
17 HMR TNT®	0053	17 HMR	JHP	17	2550	21321757	2040	245	172	116	-0.4	0.2	0.4	0.0	50	Explosive on Varmints	
17 HMR TNT® GREEN™	0951	17 HMR	TNT GREEN HP	16	2500	20431642	1955	222	148	96	-0.5	0.0	0.0	0.0	-0.6	50	Lead Free Bullet, Explosive on Varmints
STINGER®	0050	22 LONG RIFLE	CPHP	32	1640	12921066	1395	191	119	81	0.1	0.7	0.0	0.0	-2.3	50	The Hypervelocity Leader for Nearly 30 Years
MAXI-MAG® HP + V	0059	22 WIN. MAG.	JHP	30	2200	17491375	1610	322	204	126	-0.1	0.7	0.8	0.0	0.0	50	Highest Velocity 22 Win. Magnum
MAXI-MAG® HP	0024	22 WIN. MAG.	JHP	40	1875	15741319	1425	312	220	155	0.1	1.0	1.1	0.0	0.0	50	High Velocity, 40 gr., Controlled Expansion
22 MAXI-MAG® TNT®	0063	22 WIN. MAG.	TNT JHP	30	2200	17681405	1610	322	208	131	-0.1	0.7	0.8	0.0	0.0	50	Highest Velocity Win. Magnum, Explosive on Varmints
22 MAG V-MAX®	0073	22 WIN. MAG.	POLY-TIP V-MAX	30	2200	18661571	1610	322	232	164	-0.2	0.5	0.6	0.0	0.0	50	Superior Accuracy, Explosive on Varmints
SEGMENTED HP	0064	22 LONG RIFLE	SHF	32	1640	12921066	1395	191	119	81	0.1	0.7	0.0	0.0	-2.3	50	Unique Fragmentation Design
SHORT HP	0028	22 SHORT	CPHP	27	1105	961868	1070	73	55	45	0.3	0.0	-2.6	-7.9	100	Fastest 22 Short, Only Short HP	
22 MAG TNT® GREEN™	0060	22 WIN. MAG.	TNT GREEN HP	30	2050	16481317	1475	280	181	116	0.0	0.9	1.0	0.0	0.0	50	Lead Free Bullet, Explosive on Varmints
SEGMENTED HP SUB-SONIC	0074	22 LONG RIFLE	SHF	40	1050	963897	940	98	82	72	1.2	1.8	0.0	0.0	-4.3	50	Unique Fragmented Design, Sub-Sonic
MINI-MAG™ HP	0031	22 LONG RIFLE	CPHP	36	1260	11041003	1085	127	97	80	0.6	1.2	0.0	0.0	-3.2	100	The Leading High-Velocity 22 Long Rifle HP
SMALL GAME																	
17 HMR	0055	17 HMR	FMJ	20	2375	20631776	1830	250	189	140	-0.4	0.3	0.4	0.0	0.0	50	No Expansion/Reduced Meat Damage
17 HMR GAMEPOINT®	0052	17 HMR	JSP	20	2375	20511754	1830	250	187	137	-0.4	0.3	0.5	0.0	0.0	50	Controlled Expansion/Deep Penetration
22 MAG GAMEPOINT®	0022	22 WIN. MAG.	JSP	40	1875	16141385	1425	312	231	170	0.1	0.9	0.9	0.0	0.0	50	Controlled Expansion/Deep Penetration
VELOCITOR®	0047	22 LONG RIFLE	CPHP	40	1435	12301084	1130	183	134	104	0.3	0.9	0.0	0.0	-2.5	50	Fastest 40 gr. 22 Long Rifle
SGB (SMALL GAME BULLET)	0058	22 LONG RIFLE	LFN	40	1235	1088992	1060	135	105	87	0.7	1.3	0.0	0.0	-3.3	50	Flat Nose for Reduced Meat Damage
SUB-SONIC HP	0056	22 LONG RIFLE	LHP	40	1050	963897	940	98	82	72	1.2	1.8	0.0	0.0	-4.3	100	Quiet/Hollow Point is Engineered to Work at Low Speed
COMPETITION																	
SELECT™	0045	22 LONG RIFLE	LRN	40	1200	1056964	1025	128	99	82	0.8	1.4	0.0	0.0	-3.5	100	Accurate, engineered for Semi-Automatic Competition
GREEN-TAG®	0033	22 LONG RIFLE	LRN	40	1070	977908	940	102	85	73	0.3	0.0	-2.6	-7.6	100	Precision Specs for Accuracy, Sub-sonic	
PISTOL MATCH	0051	22 LONG RIFLE	LRN	40	1070	977908	940	102	85	73	0.3	0.0	-2.6	-7.6	50	Precision Specs for Accuracy, Sub-sonic	
SHORT TARGET	0037	22 SHORT	LRN	29	830	763704	790	44	37	32	1.0	0.0	-4.7	-13.5	100	Precision Ammunition for International Rapid Fire	
TARGET / PLINKING																	
SHORT	0027	22 SHORT	CPRN	29	1080	946857	1050	75	58	47	0.3	0.0	-2.7	-8.1	100	Copper-plated for Clean Bores	
MAXI-MAG®	0023	22 WIN. MAG.	TMJ	40	1875	16031366	1425	312	228	166	0.1	0.9	1.0	0.0	0.0	50	“Solid” Target Performance
MINI-MAG™	0030	22 LONG RIFLE	CPRN	40	1235	1092998	1060	135	106	88	0.7	1.3	0.0	-3.3	100	Leading High-Velocity 22 Long Rifle	
LONG	0029	22 LONG	CPRN	29	1215	1019908	1090	95	67	53	0.1	0.0	-2.2	-6.8	100	Only Classic 22 Long	
SHORT RANGE GREEN™	0952	22 LONG RIFLE	GREEN HP	21	1650	1128912	1345	127	59	NA	NA	NA	NA	NA	50	Lead Free Bullet, Accurate to 50 Yards	
STANDARD VELOCITY	0032	22 LONG RIFLE	LRN	40	1070	977908	940	102	85	73	0.3	0.0	-2.6	-7.6	100	Inexpensive Practice with Same Ballistics as Green Tag	
PEST CONTROL																	
22 LR SHOTSHELL	0039	22 LONG RIFLE	#12 shot	31	1000	—	—	—	—	—	—	—	—	—	20	Easy Pest Control	
22 WMR SHOTSHELL	0025	22 WIN. MAG.	#12 shot	52	1000	—	—	—	—	—	—	—	—	—	20	Short-Range Pest Control	
LOW NOISE / TRAINING/SPECIALTY																	
CB SHORT	0026	22 SHORT	LRN	29	710	656607	706	32	28	24	1.6	.0	-6.7	-18.8	100	Sub-sonic Pest Control	
CB LONG	0038	22 LONG	LRN	29	710	656607	706	32	28	24	1.6	.0	-6.7	-18.8	100	Sub-sonic Pest Control	
NOISE BLANK	0044	Blank	—	—	—	—	—	—	—	—	—	—	—	—	100	Great for Training Dogs	
22 WRF †	0069	22 WRF	JHP	45	1300	11251013	NRT	169	126	103	0.6	1.1	.0	-3.1	50	A Venerable Classic	

CB = "conical ball" reduced power/noise; FP = flat point; CP = copper-plated; t = lead; J = jacketed; HP = hollow point; RF = rimfire; RH = round nose SHP = segmented hollow point; SP = soft point; TMJ = encapsulated full metal jacket.
† = not for revolvers. Most 22 WRF revolvers have undersized bores that cannot use jacketed bullet. Performance data derived from industry test barrels; provided for reference. Velocities from production firearms may vary. Specifications subject to change without notice.
*Trajectory—bullet path based on 1.5 inches sight height. Do not use 17 HMR ammunition in semi-automatic firearms without first contacting your gun manufacturer. See page one for more information. Use 22 LR Short Range Green in ANSI Sporting Chambers only—DO NOT USE IN MATCH CHAMBERS. May not function in all semi-automatic firearms.

CCI PRIMERS

Primers are the key to everything we shoot. Whether we're hunting with our own special handloads, or plinking with some factory ammunition, primer performance is important. At CCI® we pride ourselves on primer-quality. As Eric Grauffel can attest, we make the most consistent, reliable primers. And we've got a primer for everyone.

Our Standard Rifle and Pistol primers meet the majority of reloading needs and are clean-burning. This means primer pockets stay clear and there's no question on performance. For those trying to get the most accuracy out of their loads, we offer Bench Rest Rifle Primers. These primers help skilled shooters get the tightest groups.

We also offer in-line muzzleloading and shotshell primers that give you reliable ignition in all conditions. A full line of percussion caps features modern, non-corrosive, non-mercuric priming compound in a variety of styles. And Four Wing Musket Caps were introduced last year to give reenactors a safe product for use in replica muskets.

Look for many of our primers that are available in APS strips for even faster reloading.

CCI ERIC GRAUFFEL WORLD IPSC CHAMPION



CCI's shooting expert, Eric Grauffel, is known for having an unprecedented winning streak. He hasn't lost a competition in more than 10 years. The 29-year-old native of France has won 174 President Medals and is World Champion of the International Practical Shooting Confederation (IPSC).

For his competitive shooting, Grauffel uses only CCI® small pistol primers in his hand-loaded ammunition. With CCI primers Grauffel says he gets the most reliability, efficiency and accuracy out of his bullets. "If a primer is not perfect, it is like killing yourself in competition," said Grauffel.

As World IPSC champion, he requires the ultimate in accuracy, quality and selection. Working and playing in some of the world's finest shooting venues, Grauffel knows quality. That's why he picks CCI every time.

Follow Grauffel's progress or find out more about CCI's Competition, Target and Plinking line. Visit www.cci-ammunition.com.

Grauffel
has **won**
more than **120-straight**
competitions
all with **CCI®**



209 IN-LINE MUZZLELOADING PRIMERS

- Optimized for muzzleloading
- Reduce fouling
- Formulated to ignite in humid conditions



PRIMERS IN APS STRIPS

- Available for most popular primers
- Speeds up reloading process
- Offers protection for primers



STANDARD RIFLE/PISTOL PRIMERS

- Clean-burning
- Meet majority of reloading needs
- Unprecedented reliability



BENCH REST RIFLE PRIMERS

- Precision ignition for tough competition
- Assembled with extra-care for consistency
- Ultimate in accuracy



MAGNUM RIFLE/PISTOL PRIMERS

- Provide extra heat and ignition power
- 20% hotter flame to light propellants in toughest hunting conditions
- No loss in sensitivity



SHOTSHELL PRIMERS

- 209 is designed for standard field and target loads
- Reliable, clean-burning
- Fit all modern shotshell cases with 209 primer pocket



PERCUSSION CAPS

- Non-corrosive, non-mercuric priming compounds
- Choice of styles
- Assembled with soft, ribbed copper cups



FOUR WING MUSKET CAPS

- Tough four wing design
- Lighter explosive charge
- Designed especially for reenactment



CCI® PRIMERS

Primer	Product Type	Part # Boxed	Part# in APS Strips	APS Strip Color Code
Shotshell	209	0008	—	—
	209M	0009	—	—
Small Rifle	400	0013	0080	yellow
	450 Mag	0017	0081	blue
	No. 41/5.56mm	0001	—	—
	BR4	0019	0082	black
Large Rifle	200	0011	0086	yellow
	250 Mag	0015	0087	blue
	No. 34/7.62mm	0002	—	—
	BR2	0010	0088	black
Small Pistol	500	0014	0078	white
	550 Mag	0018	0079	red
Large Pistol	300	0012	0084	white
	350 Mag	0016	0085	red
Muzzleloading	209	0307	—	—
	10	0309	—	—
	11	0311	—	—
Percussion Caps	11 Mag	0310	—	—
	Four Wing Musket Caps	0301	—	—
50-caliber BMG	35	0320	—	—

All CCI primers and percussion caps are non-corrosive and non-mercuric.