



Overview of the technical data:

ZEISS Conquest Binoculars				
				
Model	8x30 BT*	10x30 BT*	12x45 BT*	15x45 BT*
Magnification	8x	10x	12x	15x
Objective lens diam. (in.)	1.2	1.2	1.8	1.8
(mm)	30	30	45	45
Exit pupil (in.)	0.14	0.11	0.14	0.11
(mm)	3.75	3	3.75	3
Twilight factor	15.5	17.3	23.2	26
Closest focusing dist. (ft.)	9.8	9.8	16.4	16.4
(m)	3	3	5	5
Field of view at 1,000 yds (ft.)	360	288	240	192
at 1,000 m (m)	120	96	80	64
Weight (oz.)	17.5	18	21.3	21.9
(g)	495	510	605	620
Height (in.)	5.6	5.6	6.8	6.8
(mm)	142	142	173	173
Width (in.)	4.5	4.5	4.7	4.7
(mm)	115	115	119	119
Diopter adjustment	+/- 4 D	+/- 7 D	+/- 3 D	+/- 5 D
Order numbers	52 32 08	52 32 10	52 45 12	52 45 15

Light and powerful:
ZEISS Conquest binoculars.



Explore the wide open spaces and gain
a better eye for details – with the
new ZEISS Conquest binoculars.

1269.999 Printed in Germany www.sportive.net KD-09.03 Printed on environmentally-friendly paper, bleached without the use of chlorine

Carl Zeiss
Sports Optics

Gloelstrasse 3 – 5
D-35576 Wetzlar
www.zeiss.de/sportsoptics



We make it visible.

Fantastic long-range visibility.

Allow your gaze to roam and bring far-off details to within touching distance! The new ZEISS Conquest binoculars are a good choice not only for bird-watchers, but also for hikers, mountaineers and fans of the great outdoors. Because when high performance has to be

combined with light weight, the four new Conquest models are way ahead of the field. And you can rely on proven Zeiss quality in every respect: the waterproof binoculars with the easy-grip rubber armoring are very robust and easy to use, and benefit from T* multicoating.

Conquest - the new line in binoculars from Carl Zeiss.

Conquest 8 x 30 BT* and 10 x 30 BT*.

Conquest 12 x 45 BT* and 15 x 45 BT*.



The light all-round binoculars for all purposes: bird-watching in nature

reserves, hikes in the mountains, family excursions, treks or sports events.



Their high magnifications also make these Conquest models ideal for

difficult observation tasks over long distances.

Overview of Conquest binoculars:

- **Astonishingly light weight**
- **Waterproof in accordance with ISO 9022-81**
- **Extremely durable, temperature-resistant casing with easy-grip rubber armoring**
- **Filled with nitrogen to prevent internal fogging**
- **Fitted with lockable push-pull eyecups**
- **Ergonomically designed and easy to use**
- **With ZEISS T* multicoating**
- **Very attractive price/performance ratio**
- **High-quality Cordura bag with belt loop included as standard**



The central focusing device is easy to operate with one hand.



Fitted with lockable push-pull eyecups.





Waterproof and filled with nitrogen, which prevents internal fogging.



Your Conquest binoculars come with a high-quality Cordura bag.



Overview of the technical data:

ZEISS Conquest Binoculars				
				
Model	8x30 BT*	10x30 BT*	12x45 BT*	15x45 BT*
Magnification	8x	10x	12x	15x
Objective lens diam. (in.)	1.2	1.2	1.8	1.8
(mm)	30	30	45	45
Exit pupil (in.)	0.14	0.11	0.14	0.11
(mm)	3.75	3	3.75	3
Twilight factor	15.5	17.3	23.2	26
Closest focusing dist. (ft.)	9.8	9.8	16.4	16.4
(m)	3	3	5	5
Field of view at 1,000 yds (ft.)	360	288	240	192
at 1,000 m (m)	120	96	80	64
Weight (oz.)	17.5	18	21.3	21.9
(g)	495	510	605	620
Height (in.)	5.6	5.6	6.8	6.8
(mm)	142	142	173	173
Width (in.)	4.5	4.5	4.7	4.7
(mm)	115	115	119	119
Diopter adjustment	+/- 4 D	+/- 7 D	+/- 3 D	+/- 5 D
Order numbers	52 32 08	52 32 10	52 45 12	52 45 15

Light and powerful:
ZEISS Conquest binoculars.



The perfect view makes
any amount of effort worthwhile.
At moments like these you can't afford
to miss the smallest detail.

1269.997 Printed in Germany www.sportive.net KD-09.03 Printed on environmentally-friendly paper, bleached without the use of chlorine

Carl Zeiss
Sports Optics

Gloelstrasse 3 – 5
D-35576 Wetzlar
www.zeiss.de/sportsoptics



We make it visible.

A magnificent view.

The new ZEISS Conquest binoculars are a good choice not only for hunting in high mountains but also for stalking by day and hunting trips. Because when high performance has to be combined with light weight, the new Conquest binoculars are way ahead of the field.

With four models, the new line covers a wide variety of different uses and offers proven Zeiss quality: the waterproof binoculars with the easy-grip rubber armoring are very robust and easy to use, and benefit from T* multicoating. And all this at a very attractive price/performance ratio.

Conquest - the new line in binoculars from Carl Zeiss.

Conquest 8 x 30 BT* and 10 x 30 BT*.

Conquest 12 x 45 BT* and 15 x 45 BT*.



Perfect for long stalks by day or hunting in the mountains. These lightweight

binoculars are also the obvious accessory for family excursions and sports events.



Their high magnifications also make these Conquest models ideal for

difficult observation tasks over long distances.

Overview of Conquest binoculars:

- **Astonishingly light weight**
- **Waterproof in accordance with ISO 9022-81**
- **Extremely durable, temperature-resistant casing with easy-grip rubber armoring**
- **Filled with nitrogen to prevent internal fogging**
- **Fitted with lockable push-pull eyecups**
- **Ergonomically designed and easy to use**
- **With ZEISS T* multicoating**
- **Very attractive price/performance ratio**
- **High-quality Cordura bag with belt loop included as standard**



The central focusing device is easy to operate with one hand.



Fitted with lockable push-pull eyecups.



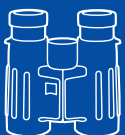
Waterproof and filled with nitrogen, which prevents internal fogging.



Your Conquest binoculars come with a high-quality Cordura bag.



Mid-sized excellence and superior brilliance: the new Victory 32 FL



Victory 8 x 32 T* FL
Victory 10 x 32 T* FL



We make it visible.



Another addition to a new generation.

Victory 32 FL - lightweight models featuring fluoride glass

The innovative expansion of a superior line, the 8x32 and 10x32 FLs represent a whole new dimension in image quality. Special objective lenses with fluoride glass ensure minimum color fringes and sharpness across the field. They set a standard for resolution, contrast and color fidelity.

At the same time the new Victory FL models are extremely lightweight and compact – due to their completely recalculated optics system and high tech design. The FLs feature a body casing of high-performance polyamide with a 60% glass fiber content, for maximum stability and minimum weight. Careful attention to mechanical details and many ingenious solutions ensure exceptional handling in the field. Anyone who expects the best in optical and technical performance need look no further than ZEISS Victory FL binoculars.



Small, Lightweight, Brilliant.

The 8x32 and the 10x32 share exceptional transmission values of over 90 % and near view focusing of only 6.5 ft. Due to their minimum weight, they are ideally suited for stalking and field ornithology.

Victory 8 x 32 T* FL

The binocular bright enough for all occasions. Excellent performance even in the twilight hours. This model also impresses with its large field of view of 420 ft. at 1000 yds.

Victory 10 x 32 T* FL

The ideal binocular for extreme detail. Discover fine details with brilliant purity and razor sharp clarity both in the distance and at close range.



Victory 8x32 T FL*



Victory 10x32 T FL*

*Objective lens with fluoride glass:
perfect image brilliance right to the edge.*

*Deep ribs for an optimum grip even with
gloves.*

*Eyecups with rotating mechanism: height-
adjustable in 4 locking settings. Removable.*



A stylish exterior with advanced optics interior:

The compact Victory 32 FL binoculars conceal concentrated optical power based on the use and application of the benefits of the Carl Zeiss Advanced Optics System and the integration of numerous pioneering innovations. The result is optimum optical performance in the smallest of spaces. A dielectric mirror layer, in conjunction

with phase-corrected Schmidt-Pechan prisms, assures optimum light reflection of over 99%.

Each individual component is specifically adjusted to ensure a precision fit and is subjected to rigorous quality assurance checks. Only when the highest precision and engineering standards are fulfilled is a binocular of ZEISS quality created.

Casing in glass fiber reinforced polyamide for exceptional ruggedness and minimum weight

Waterproof, nitrogen-filled, leakage testing to ISO 9022-81

Full rubber armoring for pleasant grip even in cold conditions

Press-fit brass bushings for maximum stability, resistance to wear and tear and uniformly smooth bridge action



Eyeglass-wearer wide-angle eyepiece with rotary eyecups

Phase-corrected Schmidt-Pechan prisms with maximum reflection dielectric mirror layers and ZEISS T multi coating: Top light transmission rates of over 90 %*

Focusing lens

Superachromat-type objective lens with fluoride glass





High tech - high durability

Binoculars are, above all, optical tools used outdoors and, in some cases, in extremely inclement conditions. Ornithologists, hunters and nature watchers – for these people excellent image brilliance counts, but they must also be able to rely upon the durability of their binocular. Regardless of whether it is in difficult terrain, in the rain, snow or cold: one may rely 100% on Carl Zeiss Victory FL binoculars in every situation – both optically and technically.

Overview of innovative Victory FL technology:

- New Superachromat type objective lens with fluoride glass: optimum edge sharpness and minimum color fringes
- Newly calculated optics with consistent utilization of the benefits of the ZEISS Advanced Optics System: lightweight, handy binoculars with excellent image quality.
- Phase-corrected Schmidt-Pechan prisms with maximum reflection dielectric mirror layers and ZEISS T* multi-coating on all gas-air surfaces on the interior for superlative light transmission greater than 90 %.
- New lightweight design: glass fiber-reinforced polyamide casing for maximum ruggedness and stability and minimum weight (only 580 g/590 g) (only 20.5 oz / 20.8 oz).
- New mechanical system with many ingenious detail solutions: optimum fit and easy handling.
- New wide-angle eyepiece for eyeglass-wearers: exceptional field of view from 140 or 120 m to 1000 m (420 ft or 360 ft at 1000 yds).
- 16 mm eye relief for 100 % of the large field of view for most eyeglass-wearers.
- Water and dustproof, nitrogen-filled against internal lens misting due to temperature fluctuations.
- Temperature stability from -30 to +60 °C (-22° F to 140° F).
- Removable eyecup for fast, easy cleaning.

Protection against the elements: the waterproof and rugged casing.

Carry strap with integrated eyepiece cap: easy to remove and replace.

Dual-drive control: when raised it is used for diopter compensation, when depressed as a focusing control.



Extras:

Transform your Victory FL into a telescope: simply mount the ZEISS Mono 3 x 12 B with adapter ring and, depending on the model, you may observe objects with 24 or 30-fold magnification. The use of a tripod is recommended. With the universal tripod fixture, the Victory FL mounts easily on the tripod.



Tripod: reference. 1206.889

DF tripod adapter: order reference. 528387

ZEISS Mono 3 x 12 B: order reference. 522012

Adapter for Mono 3 x 12 B: order reference. 528377



Objective / eyepiece lens protection: the protection caps shield objective and eyepiece lenses effectively against dust and water drops and prevent damage during transportation.

Objective lens protector: order reference. 529221

Eye piece protector: order reference. 529220

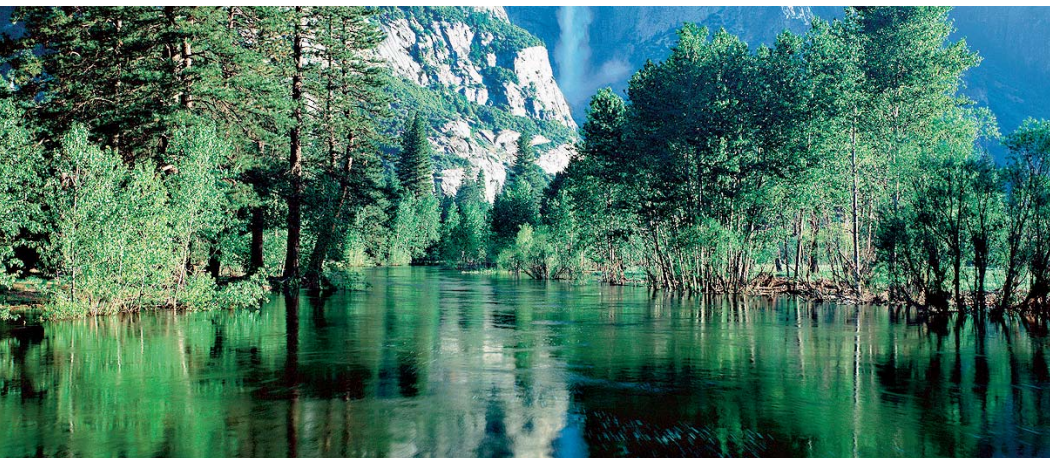
The comfortable carry strap may be quickly and easily secured to the binoculars and removed again.*

Order reference: 529119



*Your Victory FL is safe and sound in the high quality rugged Cordura bag**

Order reference. 529035

** included in retail package*



Overview of technical data:

		Victory 32 FL binoculars	
		Victory 8 x 32 T* FL	Victory 10 x 32 T* FL
			
Magnification		8 x	10 x
Objective lens diameter	(mm)	32	32
Field of view	(m/1.000 m) (ft./1000 yds.)	Ww 140 Ww 420	Ww 120 Ww 360
Eye relief	(mm)	16.0 0.63	16.0 0.63
Shortest focusing distance	(m) (yds.)	2.0 2.19	2.0 2.19
Centre drive adjustment range	- (dpt)	7	7
Diopter compensation	+/- (dpt)	4	4
Twilight performance		16	17.9
Exit pupil diameter	(mm)	4.0	3.2
Geometric brightness		16.0	10.24
Interpupillary distance from/to	(mm)	52–74	52–74
Length (eyecup elongated)	(mm) (inch)	117 (129) 4.61 (5.08)	117 (129) 4.61 (5.08)
Maximum width	(mm) (inch)	129 5.08	129 5.08
Width for a 65 mm interpupillary distance	(mm) (inch)	116 4.57	116 4.57
Weight	(g) (oz.)	580 20.46	590 20.81
Order reference		52 32 20	52 32 21
FL = Fluoride glass		T* = ZEISS multi-coating	
		Ww = binocular with wide-angle eyepieces	

Carl Zeiss
Sports Optics

Gloelstr. 3–5
D - 35576 Wetzlar
www.zeiss.de/sportsoptics

Carl Zeiss Optical, Inc.
13005 North Kingston Ave
Chester, VA 23836
Tel.: 800 441-3005
Fax: 804 530-8333
www.zeiss.com/sports

Overview of the Zeiss Victory NV:

- 20,000x light amplification
- Edge-to-edge image sharpness, free of persistence and halo effects
- Automatic electronic cutout and bright-source protection
- Integrated LED for close range
- Additional infrared illumination possible
- Optical elements waterproof and nitrogen-filled (main casing splashproof)
- 1/4- and 3/8-inch stand connections



Improved safety for shipping, even when visibility is poor.

**Light in the darkness:
Victory NV 5.6 x 62 T*.**



at late dusk or on moonless nights. Conventional optics soon reach their limits here.

The solution is the Victory NV 5.6 x 62 T*, the

compact, powerful night vision scope from Carl Zeiss, with a recognition range of 500 m.

**Carl Zeiss
Sports Optics**

Gloelstraße 3–5
D-35576 Wetzlar
www.zeiss.de/sportsoptics



We make it visible.

Making darkness light ...

Night falls – but you still have some important watching to do. Whether you are hunting red deer under today's increasingly difficult

conditions, or trying to observe wild boar on their nightly forays through the cornfields: binoculars with even the highest twilight performance will fail you

Compact high technology.

The Victory NV uses the principle of residual light amplification. When darkness falls, moonlight, stars or a bright horizon nevertheless emit residual light. The objects observed reflect tiny amounts of this light, which are used by the Victory NV to make the object visible. In more precise terms, the principle is as follows: light consists of tiny particles, known as photons. The highly sensitive Zeiss objective lens system collects these photons in the form of radiation and projects them on to the photocathode of an image intensifier tube.

The photons generate electrons which are multiplied and accelerated in the intensifier, and then projected onto the screen to show the observed object with its light amplified 20,000 times. The image is now clearly visible in green light, as the human eye is particularly sensitive to light of this wavelength (approx. 550 nm).

The Victory NV is a superlative night vision scope which will be a reliable companion to you for many years to come.

The Victory NV 5.6 x 62 T* from Carl Zeiss.



High-eyepoint eyepiece (with push-pull eyecup)

Individually adjustable, padded hand strip (attachable on left or right)

LED for added illumination at close range

Easy-grip focusing wheel

Four-element, highly corrected 62-mm-objective lens

Compact, light, and enormously powerful: the Victory NV offers a very wide field of view of 146 m at 1,000 m, with a closest focusing distance of only 5 m. Even at new moon

with an overcast sky, you will see the objects you want to observe brightly and sharply, at 5.6x magnification and with optimum resolution. Even light imperceptible

to the human eye is sufficient to make objects visible at a distance of over 500 m. And for all these benefits, the Victory NV tips the scales at a mere 1,100 g. Its compact

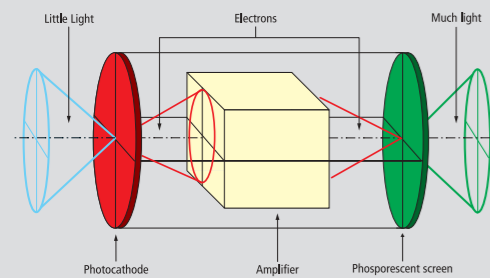
dimensions and modern, ergonomic contouring allow this high-tech scope to be operated like a compact camcorder.

Further prospects.

To increase the range of this night vision scope even further, commercially available special flashlights and infrared filters can be fastened to the underside of the instrument using a mount (order number 52 30 06-9006). This allows the user to view at long range, and also to look from bright surroundings into darkness, or from dark surroundings across a bright foreground. The night vision scope can also be mounted on a Carl Zeiss stand for fatigue-free observation over extended periods of time.



Fatigue-free observation with the robust, light Carl Zeiss stand. (Order no. stand 1206-899)



A small amount of light enters the objective lens. The photons generate electrons on the photocathode, which are multiplied and accelerated in an amplifier. The phosphorescent screen displays the image with an amplification of 20,000x.



The Victory NV can be carried comfortably and safely in its padded case.



The image brightness can be adjusted to different light conditions using the + and - buttons.



High transmission through patented T* multicoding.

Victory NV 5.6 x 62 T*	
Power	5.6x
Objective lens diameter	62 mm
Closest focusing distance	5 m
Field of view at 1000 m	146 m
Range at 3 mlx ambient light, using standard test chart	500 m
Weight	1,100 g
Length	233 mm
Width	80 mm
Height	100 mm
Order number 523007	



Suitable flashlights such as Surefire (left) or Maglite (right, with adapter order no. 52 30 06-9008) are commercially available.



The flashlights are easily attached to the underside of the instrument using the mount (order no. 52 30 06-9006).