



THE ARMORY

1911 • M1A • M1 GARAND



The firearms industry is one of tradition. Noble tradition.

It's why we proudly declare "Since 1794." In all honesty, truly innovative moves in firearms design since the death of John M. Browning can probably be counted on one hand.

And that's okay. Unlike some of our colleagues in the industry, you won't see Springfield Armory putting a new finish or different colored grip on a 96-year-old design and calling it NEW. We save our proclamations of innovation for things that are truly innovative. Like John Garand's M1 design or the new EMP™ (see pages 22-23). Some people aspire to own the latest. Others aspire to own the best.

Either way, in 2007, Springfield has you covered.

GI SERIES

Forged frame, slide and barrel, low-profile military sights, standard magazine well and spur hammer, standard ejection port, arched mainspring housing with lanyard loop, vertical slide serrations, hardwood U.S. grips, and titanium firing pin.



MIL-SPEC™

Forged frame, slide and barrel, 3-dot combat sights, high-hand™ grip, beveled magazine well, polished feed ramp & throated barrel, arched mainspring housing, stainless steel barrel, lowered and flared ejection port, angled slide serrations, loaded chamber indicator and titanium firing pin.



LOADED

Precision-fit forged frame, slide and barrel, flat serrated mainspring housing, lowered and flared ejection port, Delta™ lightweight hammer, loaded chamber indicator, titanium firing pin, carry bevel treatment, ambidextrous thumb safety, high-hand beavertail grip safety, dovetail front sight, premium fixed or adjustable rear sights (many with tritium inserts), Torx head grip screws and lightweight, adjustable speed trigger.



TRP™ & TROPHY MATCH

Forged frame, slide and barrel, fully checkered front strap and mainspring housing (20 lpi), match barrel and bushing, wide-mouth magazine well, tuned trigger and your choice of stainless steel or durable Armory Kote™ Teflon.



SPRINGFIELD ARMORY® NEW 1911 PACKAGES

All Springfield Armory 1911 pistols now include a deluxe carrying case, an injection-molded belt-slide holster, double magazine pouch, cable lock and bore brush, all for the same price as the gun alone.



	TRP	TROPHY	LOADED	MIL-SPEC	GI SERIES
Wide-Mouth Magazine Well	•	•	PX9152L only		
Flared Ejection Port	•	•	•	•	
Available Operator Model	•		•		
Delta Lightweight Hammer	•	•	•		
Loaded Chamber Indicator	•	•	•	•	
Adjustable Speed Trigger	•	•	•		
Titanium Firing Pin	•	•	•	•	•
Carry Bevel Treatment	•	•	•		
Ambidextrous Thumb Safety	•	•	•		
High-Hand Beaver Tail Grip Safety	•	•	•		
Available Integral Locking System	•	•	•	•	•
Black Armory Kote	•				
Stainless Steel	•	•	•	•	•
Parkerized			•	•	•
OD Green Armory Kote			•		^a
Bi-Tone			•		
Available Sights	Fixed Combat, Adj. Tritium	Fully Adjustable Target	Adj Target, 3-Dot, Fixed Combat, Tritium, Bo-Mar	3-Dot Combat	Low-Profile Military

SIZE COMPARISON

In a world where “one size fits all” is increasingly sold as a benefit, Springfield Armory recognizes that one platform isn’t sufficient for all operations. And whether your operation is a felony vehicle stop, an undercover drug bust, breaching an entry to a hostage standoff, winning the world championships in your tactical or target shooting discipline or just punching holes in aluminum cans to pass the time at deer camp, Springfield Armory offers the features you need in the frame size best suited to your end use.

Springfield Armory designers have gone well beyond the standard full-size, mid-size and compact configurations to include long-range tack drivers and the new Enhanced Micro Pistol (See Pages 22-23)— the new standard in concealable 1911-style pistols.

MICRO COMPACT®	3" Barrel (6.5" Overall Length)	Compact Grip (6+1 Rounds 45 ACP)	
ULTRA COMPACT	3.5" Barrel (7" Overall Length)	Compact Grip (6+1 Rounds 45 ACP)	
MID (CHAMPION)	4" Barrel (7.5" Overall Length)	Full-Length Grip (7+1 Rounds 45 ACP)	
FULL SIZE	5" Barrel (8.5" Overall Length)	Full-Length Grip (7+1 Rounds 45 ACP)	
LONG BARREL	6" Barrel (9.5" Overall Length)	Full-Length Grip (7+1 Rounds 45 ACP)	



	TRP	TROPHY	OPERATOR	LOADED	MIL-SPEC	GI SERIES
Long				•		
Full Size	•	•	•	•	•	•
Mid (Champion)			•	•		•
Ultra Compact				•		
Micro Compact			•	•		•

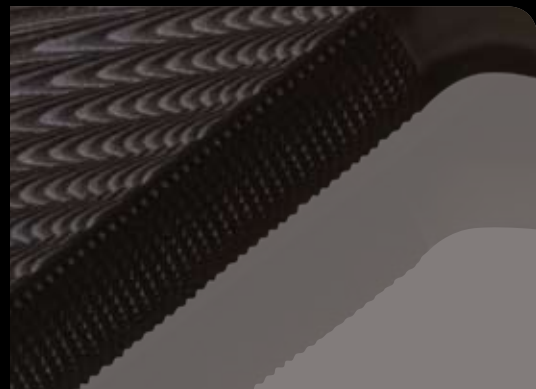
The TRP® series of Tactical Response Pistols delivers many of the features that parallel our FBI contract custom pistol — along with the resulting performance — but at a fraction of the cost. Fully checkered front strap and mainspring housing (20 lpi), match barrel and bushing, wide-mouth magazine well, tuned trigger and your choice of stainless steel or durable Armory Kote™ Teflon. Choose from three TRP models.

The Springfield Armory Trophy Match takes many of the tactical features developed for the TRP family of pistols, wide-mouth magazine well, highly tuned trigger, match barrel and bushing and checkered front strap and mainspring housing.

These features guarantee functionality while its contrasting stainless steel finish is easy on the eyes. Fully adjustable target sights enable you to take advantage of all of this gun's accuracy.



TRP Armory Kote (PC9108LP)



THE TRP PRODUCTION CYCLE

Springfield Armory Tactical Response Pistols begin as high-end production guns. However, before leaving the factory, each TRP undergoes a series of operations that only a trained master pistolsmith can execute. The result is the perfect hybrid of a top-end production gun and a custom rig.

MODEL	CALIBER	BARREL	SIGHTS	TRIGGER PULL	MAGAZINES	GRIPS	WEIGHT
PC9108LP	.45 ACP	5"	Fixed Combat, Tritium	4.5-5 lbs	2 w/ Slam Pad	G10 Composite	42 oz
PC9105LP	.45 ACP	5" Bull	Adjustable Tritium	4.5-5 lbs	2 w/ Slam Pad	G10 Composite	45 oz
PC9107LP	.45 ACP	5"	Fixed Combat, Tritium	4.5-5 lbs	2 w/ Slam Pad	G10 Composite	42 oz
PI9140LP	.45 ACP	5"	Fully Adjustable Target	4.5 - 5 lbs	2	Cocobolo Hardwood	40 oz

Springfield Armory Operator® model pistols were the first pistols offered by a major 1911 manufacturer having a light mounting rail forged directly into the pistol frame. While others have followed our lead, we still offer the most comprehensive line of 1911 light rail guns available, which now includes the first aluminum-framed 1911s with integral light rails.

The standardized Picatinny mounting platform readily receives the most popular whitelight, infrared and laser illuminating devices used by US military Spec-Ops and law enforcement SWAT teams. These fully capable, extreme duty firearms are truly the best of the best.

Loaded Full-Size MC Operator (PX9105MLP) 



TRP Operator (PC9105LP) 



 Lightweight Operator (PX9116LP)



ONE SIZE DOESN'T FIT ALL

Different operations call for varied operators. Springfield offers the Operator configuration in three different frame sizes to accommodate the tactics employed in various situations. In addition to the full-size Operators seen on this page, smaller framed Operators can be seen on pages 18 and 25.

MODEL	CALIBER	BARREL	SIGHTS	TRIGGER PULL	MAGAZINES	GRIPS	WEIGHT
PX9116LP	.45 ACP	5" Fully Supported Ramped Bull	Fixed Combat, Tritium	5-6 lbs	2	Cocobolo	34 oz
PX9105MLP	.45 ACP	5"	Fixed Combat, Tritium	5-6 lbs	2	Pachmayr® wraparound	42 oz
PC9105LP	.45 ACP	5" Bull	Adjustable Tritium	4.5-5 lbs	2 w/ Slam Pad	G10 Composite	45 oz

These Loaded models include premium adjustable rear sights (select models with tritium inserts), precision-fit forged frames, slides and barrels, front & rear cocking serrations on full-size guns, flat serrated mainspring housing, lowered and flared ejection port, Delta™ lightweight hammer, loaded chamber indicator, titanium firing pin, carry bevel™ treatment, ambidextrous thumb safety, high-hand™ beavertail grip safety, dovetail front sight, Torx head grip screws and lightweight, adjustable speed trigger.

Loaded Full Size 5" Barrel Target 9x19 mm
Stainless Steel Adj. Sights (PI9134LP)



Loaded Black Stainless Target (PX9152LP)



Loaded Long Slide Stainless (PX9628LP)



Loaded Full Size 5" Barrel Target .45 Stainless Steel Adj. Sights (PX9132LP)



ADJUSTABLE SIGHTS
Springfield's premium adjustable rear sights help you take advantage of all the accuracy advantages built into the Loaded family of pistols.

MODEL	CALIBER	BARREL	SIGHTS	TRIGGER PULL	MAGAZINES	GRIPS	WEIGHT
PX9132LP	.45 ACP	5"	Fully Adjustable Target	5-6 lbs	2	Cocobolo Hardwood	40 oz
PI9134LP	9x19 mm	5"	Fully Adjustable Target	5-6 lbs	2	Cocobolo Hardwood	40 oz
PX9152LP	.45 ACP	5"	Bo-Mar Style adj. w/ Tritium	4.5-5 lbs	2 w/ Slam Pad	G10 Composite	40 oz
PX9628LP	.45 ACP	6" Bull	Fully Adjustable Target	5-6 lbs	2	Cocobolo Hardwood	45 oz


Loaded models with fixed combat sights offer either traditional 3-dot or tritium inserts. All the other Loaded options are here including precision-fit forged frames, slides and barrels, front & rear cocking serrations on full-size guns, flat serrated mainspring housing, lowered and flared ejection port, Delta™ lightweight hammer, titanium firing pin, carry bevel treatment, ambidextrous thumb safety, high-hand™ beavertail grip safety, dovetail front sight, Torx head grip screws and lightweight, adjustable speed trigger.

Loaded Full Size Lightweight Bi-tone (PX9104LP) 



Loaded Full Size Stainless Steel .45 (PX9151LP)



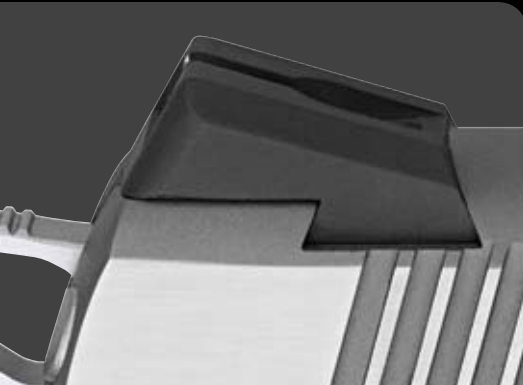
Loaded Full Size Parkerized (PX9109LP) 



Loaded Full Size Stainless Steel 9x19 mm (PX9130LP)



Loaded Full Size Black Stainless Steel, Combat (PX9154LP)



FIXED SIGHTS
Our fixed sights are designed with a special low profile to increase the speed of your draw and minimize snagging. Some models feature traditional 3-dot, while others have tritium inserts for low light situations.

MODEL	CALIBER	BARREL	SIGHTS	TRIGGER PULL	MAGAZINES	GRIPS	WEIGHT
PX9154LP	.45 ACP	5"	Fixed Combat, 3-Dot	4.5-5 lbs	2	Checkered Rubber	40 oz
PX9104LP	.45 ACP	5" Fully Supported Ramped	Fixed Combat, Tritium	5-6 lbs	2	Cocobolo Hardwood	33 oz
PX9151LP	.45 ACP	5"	Fixed Combat, 3-Dot	5-6 lbs	2	Cocobolo Hardwood	40 oz
PX9109LP	.45 ACP	5"	Fixed Combat, Tritium	5-6 lbs	2	Cocobolo Hardwood	40 oz
PX9130LP	9 x 19 mm	5" Fully Supported Ramped	Fixed Combat, 3-Dot	5-6 lbs	2	Cocobolo Hardwood	40 oz

All Springfield Armory Mil-Spec™ 1911 models include: forged frame, slide and barrel, 3-dot combat sights, high-hand grip, beveled magazine well, polished feed ramp & throated barrel, arched mainspring housing, stainless steel barrel, lowered and flared ejection port, angled slide serrations, black and cocobolo hardwood grips, loaded chamber indicator and titanium firing pin.

Mil-spec Full Size Stainless 5" Bbl. (PB9151LP)



Mil-spec Full Size Parkerized 5" Bbl. (PB108LP)



LOWERED & FLARED EJECTION PORT

By lowering the ejection port, expended rounds are ejected to the side rather than vertically keeping your line of sight unobscured and preventing hot empties from contacting the shooter.

MODEL	CALIBER	BARREL	SIGHTS	TRIGGER PULL	MAGAZINES	GRIPS	WEIGHT
PB9108LP	.45 ACP	5"	3-Dot Combat	5-6 lbs	2	Black Plastic & Cocobolo Hardwood	39 oz
PB9151LP	.45 ACP	5"	3-Dot Combat	5-6 lbs	2	Black Plastic & Cocobolo Hardwood	39 oz

Our tribute to the 1911 that started it all, the Springfield Armory G.I. 1911 single-stack models are built with a forged frame, slide and barrel. Single stack and high capacity models feature low-profile military sights, a standard magazine well and spur hammer.

Standard ejection port, arched mainspring housing with lanyard loop, vertical slide serrations, hardwood U.S. grips, and titanium firing pin.

In other words, you won't see these guns on blue velvet in glass cases. They're either in the holster or in your hand doing their job.

GI Full Size OD Green
Armory Kote 5" Bbl. (PW9609LP)



GI Full-Size, Hi-Cap Parkerized (PW9701LP)



GI Full Size Stainless Steel 5" Bbl. (PW9151LP)



GI Full Size Parkerized 5" Bbl. (PW9108LP)



I.L.S.™ INTEGRAL LOCKING SYSTEM

Springfield's patented Integral Locking System (I.L.S.) is available on all Springfield Armory 1911 pistols. With the turn of a key, the pistol is locked and the hammer cannot be cocked. The I.L.S. also is available in a retrofit kit that is compatible with all 1911 pistols utilizing a standard mainspring housing, regardless of manufacturer.

MODEL	CALIBER	BARREL	SIGHTS	TRIGGER PULL	MAGAZINES	GRIPS	WEIGHT
PW9108LP	.45 ACP	5"	Low-Profile Military	5-6 lbs	1	U.S. Hardwood	39 oz
PW9609LP	.45 ACP	5"	Low-Profile Military	5-6 lbs	1	U.S. Hardwood	39 oz
PW9701LP	.45 ACP	5"	Low-Profile Military	5-6 lbs	1	U.S. Hardwood	40 oz
PW9151LP	.45 ACP	5"	Low-Profile Military	5-6 lbs	1	U.S. Hardwood	39 oz

Champion is Springfield Armory's designator for mid-size 1911s. Champions are built on a full-size frame with a shortened four-inch barrel and slide and are the perfect blend of handling and concealability.

Loaded Champions and the Champion Operator are built on rugged forged frames with precision-fit slides and barrels, flat serrated mainspring housing, lowered and flared ejection port, Delta lightweight hammer, loaded chamber indicator, titanium firing pin, carry bevel treatment, ambidextrous thumb safety, high-hand beavertail grip safety, dovetail front sight, Torx head grip screws and lightweight, adjustable speed trigger.

Lightweight Champion Operator (PX9115LP)



Loaded Champion Stainless Steel (PX9142LP)



Loaded Champion Lightweight OD Green/Black Armory Kote (PX9149LP)



ADJUSTABLE SPEED TRIGGER

Springfield's Custom Loaded 1911s have trigger overtravel adjustability, a feature most shooters would expect from special custom models or as a pricey add-on.

MODEL	CALIBER	BARREL	SIGHTS	TRIGGER PULL	MAGAZINES	GRIPS	WEIGHT
PX9149LP	.45 ACP	4" Fully Supported Ramped Bull	Fixed Combat, Tritium	5-6 lbs	2 w/ Slam Pad	Checkered Rubber	30 oz
PX9115LP	.45 ACP	4" Fully Supported Ramped Bull	Fixed Combat, Tritium	5-6 lbs	2	Cocobolo	31 oz
PX9142LP	.45 ACP	4" Fully Supported Ramped Bull	Fixed Combat, Tritium	5-6 lbs	2	Cocobolo Hardwood	37 oz

Mid-size Champion models are also available in our GI configuration that includes a forged frame, slide and barrel and include low-profile military sights, a standard magazine well and spur hammer, standard ejection port, arched mainspring housing with lanyard loop, vertical slide serrations, hardwood U.S. grips, and a titanium firing pin.

GI Champion Lightweight 4" Bbl. (PW9143LP)



GI Champion Parkerized 4" Bbl. (PW9142LP)

MODEL	CALIBER	BARREL	SIGHTS	TRIGGER PULL	MAGAZINES	GRIPS	WEIGHT
PW9142LP	.45 ACP	4" Fully Supported Ramped	Low-Profile Military	5-6 lbs	1	U.S. Hardwood	37 oz
PW9143LP	.45 ACP	4" Fully Supported Ramped	Low-Profile Military	5-6 lbs	1	U.S. Hardwood	30 oz

Springfield Armory has created the smallest, most concealable 1911 available: The Enhanced Micro Pistol — EMP.™

Importantly, you can't reduce the outer dimensions of a pistol without going after the inner workings, too. All together we had to re-engineer 15 different parts. What we got in the end was not just a new gun, but a new class of gun — the short-action 1911. Now that the hard part is out of the way, other gunmakers will surely copy it. But when you see their copies that look almost like a Springfield EMP, you'll say to yourself, "Hey, that looks almost like a Springfield EMP." ... It's great to be first.



EMP 40 S&W (PI9241LP)



Enhanced Micro Pistol(PI9209LP)

SHORT-ACTION 1911 LONG-ACTION 1911



GRIP CIRCUMFERENCE COMPARISON

What did it take to create the smallest, most concealable 1911 you can buy? ... Quite a bit. The new Enhanced Micro Pistol (EMP) design enhances the legendary 1911's performance with shorter cartridges like 9mm and 40 S&W. This allowed us to shorten the frame by 1/8 inch. This seemingly small change in the front-to-back dimension creates a remarkable reduction in grip circumference.

MODEL	CALIBER	BARREL	SIGHTS	TRIGGER PULL	MAGAZINES	GRIPS	WEIGHT
PI9209LP	9mm	3" Fully Supported Ramped Bull	Fixed Combat Tritium	5-6 lbs	2	Cocobolo	26 oz
PI9210LP	9mm	3" Fully Supported Ramped Bull	Fixed Combat Tritium	5-6 lbs	2	Composite	26 oz
PI9240LP	40 S&W	3" Fully Supported Ramped Bull	Fixed Combat Tritium	5-6 lbs	2	Cocobolo	30 oz
PI9241LP	40 S&W	3" Fully Supported Ramped Bull	Fixed Combat Tritium	5-6 lbs	2	Composite	30 oz

COMPACT

Springfield's line of compact pistols all come equipped with ramped, fully supported barrels. Not all manufacturers of compact 1911s offer this important feature. Ramped, fully supported barrels are needed to provide total reliability in shorter slide length pistols.

Loaded Ultra-Compact and Micro Compact® pistols include all the Loaded features including precision-fit forged frames, slides and barrels, flat serrated main-spring housing, lowered and flared ejection port, Delta lightweight hammer, loaded chamber indicator, titanium firing pin, carry bevel™ treatment, ambidextrous thumb safety, high-hand™ beavertail grip safety, dovetail front sight, Torx head grip screws and lightweight, adjustable speed trigger.

Loaded Micro Compact Lightweight Bi-tone (PX9801LP)



Loaded Ultra Compact Stainless Steel (PX9161LP)



Loaded Micro-Compact Lightweight Bi-tone Operator w/ Light Rail (PC9802LP) Equipped with XML Mini Light™



DELTA LIGHTWEIGHT HAMMER

An ergonomic, rounded design assists rapid operation while skeletonized construction reduces mass and, therefore, lock time — the duration between the trigger sear's disengagement and the firing pin striking the primer. Allowing for better performance

MODEL	CALIBER	BARREL	SIGHTS	TRIGGER PULL	MAGAZINES	GRIPS	WEIGHT
PC9802LP	.45 ACP	3" Fully Supported Ramped Bull	Fixed Combat Tritium	5-6 lbs	2	Thin-Line Cocobolo	26 oz, without Light
PX9801LP	.45 ACP	3" Fully Supported Ramped Bull	Fixed Combat Tritium	5-6 lbs	2	Thin-Line Cocobolo	26 oz
PX9161LP	.45 ACP	3.5" Fully Supported Ramped Bull	Fixed Combat Tritium	5-6 lbs	2	Thin-Line Cocobolo	33 oz

COMPACT

Compact 1911 models are also available in our GI configuration that includes a forged frame, slide and barrel, low-profile military sights, a standard magazine well and spur hammer, standard ejection port, arched mainspring housing with lanyard loop, vertical slide serrations, hardwood U.S. grips, and a titanium firing pin.



GI Micro Compact® Parkerized 3" Bbl. (PW9801LP)



TITANIUM FIRING PINS

Springfield's titanium firing pin travels faster than a steel firing pin and consequently decreases the pistol's lock time allowing the bullet to exit the barrel's muzzle sooner, resulting in less follow-through influence on the bullet's point of impact.

MODEL	CALIBER	BARREL	SIGHTS	TRIGGER PULL	MAGA-ZINES	GRIPS	WEIGHT
PW9801LP	.45 ACP	3" Fully Supported Ramped	Low-Profile Military	5-6 lbs	1	U.S. Hardwood	33 oz

COMPACT

When master pistolsmiths begin with a foundation as solid as a Springfield Armory 1911, apply a combination of ultra-modern manufacturing technologies and old-school hand fitting and attention to detail, the result earns a Springfield Custom™ stamp on the slide. With input from legends like 16-time USPSA National Champion Rob Leatham and Custom Shop Director and American Pistolsmiths' Guild Pistolsmith of the Year David Williams, we've developed a few proven "recipes" for great custom guns. However, you can work personally with our Custom Shop Coordinator to spec out every single part and feature to your exacting demands.

PC9111

The FBI's regional SWAT and Hostage Rescue Teams have chosen this Springfield Custom Shop 1911 as their primary sidearm for good reason:

- Custom-fit slide and frame
- Custom-fit Nowlin match barrel
- Polished feed ramp and throated barrel
- Tool steel match hammer and sear
- Lightweight speed trigger (4 lbs)
- Tuned for total reliability
- Lowered and flared ejection port
- Tuned and polished extractor
- Std. 1911-A1 recoil spring guide
- Custom-fit beavertail grip safety
- Custom-fit ambidextrous thumb safety
- Low-mount fixed combat tritium rear sight
- Dovetail front sight
- Custom-fit magazine well
- 20 lpi hand-checked front strap
- Checkered cocobolo hardwood grips
- Carry Bevel on complete pistol
- Black T™ finish
- Available with optional light rail

TG01: LEATHAM LEGEND™ SERIES

The world's greatest shooters demand the world's greatest firearms. TGO series 1911s are built to the exacting specifications of 4-time World Champion and 16-time National Champion, Rob Leatham. For a detailed description of each part and specification, visit springfieldarmory.com.

XD CUSTOM

Springfield Armory is the only manufacturer offering in-house custom services for modern polymer pistols. And what better starting point for a custom polymer pistol is there than a Springfield Armory XD? Whether you choose one of our complete packages or have one customized to your specifications, now there is a way to make the best striker-fired polymer pistol even better. The XD at right features:

- Extended magazine release
- Tuned 3.5 lb. trigger
- Trigger system with reduced overtravel and reset
- Hi-Hand relief modification to frame with extended beavertail and texture treatment
- Bo-Mar adjustable rear sight
- XD match barrel (fitted)

These are just a few examples of the Springfield Custom Shop's capabilities. If you can dream it we can build it. After all we are one of the last true custom shops. 1-800-617-6751



PC9111
TG01: Leatham Legend Series
XD CUSTOM



M1A SOCOM II Black Fiberglass Stock (AA9627)
M1A SOCOM II Urban Camo Stock (AA9628)

SOCOM rifles are compact, powerful, close-quarter battle rifles, but they still pack plenty of punch to reach out and make that crucial shot at a distance. They feature 16-inch barrels made possible by a re-tuned gas system. A proprietary, high-efficiency muzzle brake virtually eliminates muzzle rise, enabling you to stay on target for faster, more accurate follow-up shots.

EXTENDED TOP RAIL

The extend top rail system of the SOCOM II further enhances its versatility by the ability to choose to load optical sights with shorter eye-relief.



MODEL	STOCK	CALIBER	BARREL	SIGHTS	TRIGGER PULL	CAPACITY	LENGTH	WEIGHT
AA9627	Black Fiberglass	7.62mm NATO (.308 win.)	16.25"; Twist 1 in 11"; RH; 6-Groove	Front: XS Post w/Tritium Insert Rear: Enlarged Military Aperture	5-6 lbs; 2-Stage Military Trigger	10-Round Box Magazine	37.25	10.9 lbs
AA9628	Urban Camo							
AA9629	Black Extended Top Rail							

SOCOM 16 & SCOUT SQUAD™



M1A SOCOM 16 Black Fiberglass Stock (AA9626)
M1A Scout Squad Walnut Stock (AA9122)

The Scout Squad™ provides similar compact dimensions to the SOCOM family of close-quarter battle rifles, but utilizes a slightly longer barrel that enhances the ability to reach out for that difficult long-range shot.

MUZZEL BRAKE

The muzzle brake feature on our close-quarter battle rifles is something that has to be experienced to be believed.



	MODEL	STOCK	CALIBER	BARREL	SIGHTS	TRIGGER PULL	CAPACITY	LENGTH	WEIGHT
SOCOM 16	AA9626	Black Fiberglass	7.62mm NATO (.308 win.)	16.25"; Twist 1 in 11"; RH; 6-Groove	Front: XS Post w/Tritium Insert Rear: Enlarged Military Aperture	5-6 lbs; 2-Stage Military Trigger	10-Round Box Magazine	37.25"	8.9 lbs
	AA9122	Walnut	7.62mm NATO (.308 win.)	18"; twist 1 in 11"; RH; 6-Groove	Front: Military Square Post Battle Sights Rear: Military Aperture	5-6 lbs; 2-Stage Military Trigger	10-Round Box Magazine	40.33"	9.3 lbs
SCOUT SQUAD	AA9126	Black Fiberglass	7.62mm NATO (.308 win.)	18"; twist 1 in 11"; RH; 6-Groove	Front: Military Square Post Battle Sights Rear: Military Aperture	5-6 lbs; 2-Stage Military Trigger	10-Round Box Magazine	40.33"	9 lbs
	AA9124	Mossy Oak	7.62mm NATO (.308 win.)	18"; twist 1 in 11"; RH; 6-Groove	Front: Military Square Post Battle Sights Rear: Military Aperture	5-6 lbs; 2-Stage Military Trigger	10-Round Box Magazine	40.33"	9 lbs



The M25 White Feather is a tribute to the late Marine Gunnery Sgt. Carlos N. Hathcock. Hathcock is widely known as the most effective sniper during the Vietnam conflict. The M25 Has all the same features as our Super Match M1A, plus: a pillar-bedded rear-lugged receiver, low-profile custom muzzle brake/stabilizer, adjustable McMillan stock, proprietary match trigger group and scope mount.

M25 White Feather Tactical Rifle w/ Bi-pod (SA9502) Shown with optional scope, bipod and 20-round magazine
Loaded M1A w/ Extended Cluster Rail (MA9827) Shown with optional scope, bipod, light and 20-round magazine



M25 WHITE FEATHER
In a special arrangement with the Hathcock family, each M25 White Feather bears the likeness of Hathcock's signature and the White Feather logo. White Feather is a nickname bestowed upon Hathcock by enemy Viet Cong in reference to the white feather he often wore in his bush hat.

MODEL	STOCK	CALIBER	BARREL	SIGHTS	TRIGGER PULL	CAPACITY	LENGTH	WEIGHT
MA9827	Black Fiberglass Stock	7.62mm NATO (.308 win.)	22"; twist 1 in 11"; RH; 6-Groove, National Match med. wt. premium air gauged	Front: National Match Front Blade Rear: GI Match Grade (non-hooded .520) Aperture One-Half Minute adj. for Windage and One-Minute adj. for Elevation	4.5 lbs; 2-Stage Military Trigger	10-Round Box Magazine	44.33"	11.9 lbs
SA9502	Black Fiberglass Stock	7.62mm NATO (.308 win.)	22"; twist 1 in 10"; RH; Krieger Carbon Heavy Match (Optional Krieger Stainless Steel Heavy Match)	1.5 - 4.75 lbs; SA M25 Match Trigger (Adjustable, Patent Pending Trigger)	5-6 lbs; 2-Stage Military Trigger	10-Round Box Magazine	46"	12.75 lbs



M1A Standard w/ Mossy Oak Stock (MA9104)
 M1A Loaded w/ Walnut Stock Stainless Steel Barrel (MA9822)



MOSSY OAK BREAKUP®
 Many M1A models are available in a rugged film-transfer Mossy Oak® Break-Up® camouflage pattern. This industry standard was set by hunters who recognized the superiority of its computer-enhanced realistic elements that create a sense of depth and texture that is yet to be matched by any other pattern.

	MODEL	STOCK	CALIBER	BARREL	SIGHTS	TRIGGER PULL	CAPACITY	LENGTH	WEIGHT
STANDARD	MA9106	Black Fiberglass Stock	7.62mm NATO (.308 win.)	22"; Twist 1 in 11"; RH; 6-Groove	Front: Military Square Post Rear: Military Aperture w/ MOA Adjustment For both Windage and Elevation	5-6 lbs; 2-Stage Military Trigger	10-Round Box Magazine	44.33	9.2 lbs
	MA9102	Urban Camo Stock							
	MA9104	Mossy Oak							
LOADED	MA9822	Walnut Stainless Steel Barrel	7.62mm NATO (.308 win.)	22"; twist 1 in 11"; RH; 6-Groove; National Match med. wt. premium air gauged	Front: National Match Front Blade Rear: GI Match Grade (non-hooded .520) Aperture One-Half Minute adj. for Windage and One-Minute adj. for Elevation	4.5 lbs; 2-Stage Military Trigger	10-Round Box Magazine	44.33"	9.8 lbs
	MA9826	Black Fiberglass Stock w/ Stainless Steel Barrel							
	MA9222	Walnut Carbon Steel Barrel							
	MA9226	Black Fiberglass Carbon Steel Barrel							

M1A MATCH



M1A National Match w/ Walnut Stock (NA9102)
M1A Super Match, Marine Corp. Camo McMillan stock and stainless steel barrel (SA9805) Shown with optional 20-round magazine

Springfield M1A Target rifles take all the dependability of the M1A design and add accuracy enhancements like glass bedding, an improved gas cylinder and National Match recoil spring guide, rear-lugged receiver, flash suppressors and sights. With the 100th annual National Rifle Championships occurring at Camp Perry this year, 2007 is a perfect year to get your M1A Target rifle from Springfield Armory.

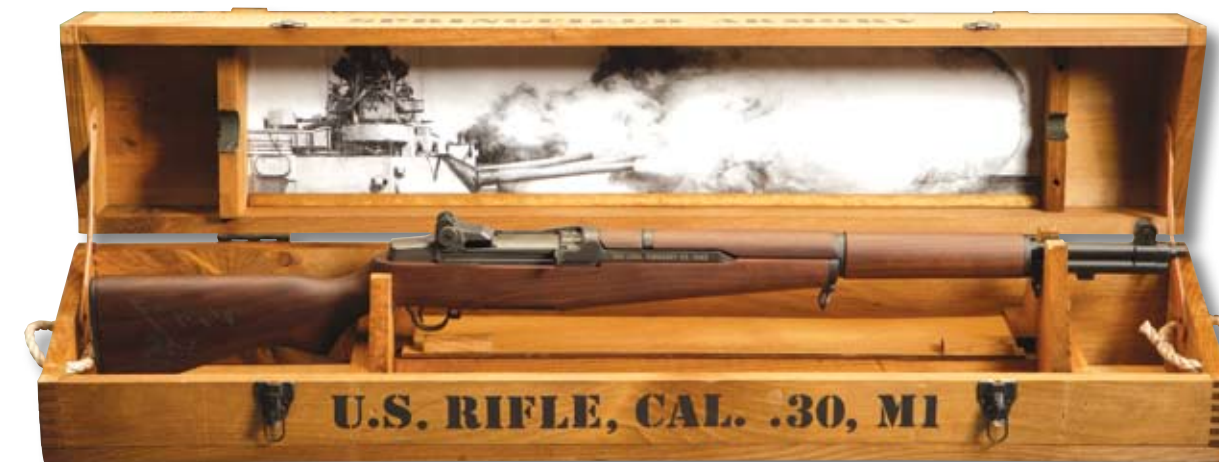
NATIONAL MATCH SIGHTS

Our National Match sights have a smaller rear aperture for more precise target acquisition. Elevation adjustment is done in ultra-precise half-minute-of-angle increments as compared to full minute-of-angle adjustments on standard sights. The aperture itself is hooded to reduce glare.



	MODEL	STOCK	CALIBER	BARREL	SIGHTS	TRIGGER PULL	CAPACITY	LENGTH	WEIGHT
NATIONAL	NA9102	Walnut	7.62mm NATO [.308 win.]	22"; twist 1 in 11"; RH; 6-Groove; National Match med. wt. premium air gauged	Front: National Match Front Blade Rear: Match-Grade Hooded Aperture with One-Half Minute adj. for both Windage and Elevation	4.5 lbs; Crisp 2-Stage Military Trigger	10-Round Box Magazine	44.33"	10.8 lbs
	NA9802	Walnut Stainless Steel Barrel							
SUPER	SA9102	Walnut (oversized)	7.62mm NATO [.308 win.]	22"; twist 1 in 10"; RH; 6-Groove; Douglas Premium Air-Gauged Custom Heavy Match	Front: National Match Front Blade Rear: Match-Grade Hooded Aper- ture with One-Half Minute adj. for both Windage and Eleva- tion	4.5 lbs; Crisp 2-Stage Military Trigger	10-Round Box Magazine	44.33"	11.2 lbs (Walnut) 11.8 lbs (Fiberglass)
	SA9802	Walnut Douglas Stain- less Steel Barrel							
	SA9804	Black Mcmillan Stock, Douglas Stain- less Steel Barrel							
	SA9805	Marine Corp Camo Mcmillan Stock, Douglas Stain- less Steel Barrel							
	SA9121	M21 Adjustable Walnut Stock, Douglas Barrel							
SA9131	M21 Adjustable Walnut Stock, Stainless Steel Krieger Barrel	Stainless Steel Krieger Barrel							

M1 GARAND



General George Patton declared the M1 Garand the greatest battle implement ever devised. In the hands of Allied soldiers fighting on two fronts, the Garand liberated Europe and pushed back the spread of Japanese imperialism. No collection of historical military firearms is complete without an M1 Garand.

M1 Garand



AUTHENTIC SPRINGFIELD

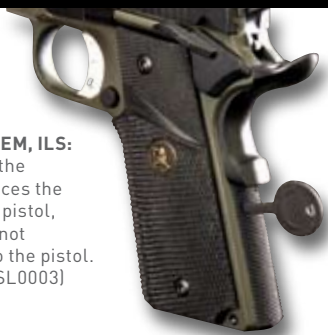
When the U.S. Army adopted the M1 Garand design in 1936, the greatest production effort in the history of Springfield Armory began. During the entire production history of the M1 rifle, Springfield Armory produced over 4.5 million of them. Today you can get one, brand new, with all the authentic details of the original.

MODEL	STOCK	CALIBER	BARREL	SIGHTS	TRIGGER PULL	CAPACITY	LENGTH	WEIGHT
M1 GARAND	Walnut	30-06	24"; twist 1 in 11"; RH; 6-Groove	Front: Military Square Post Rear: Military Aperture with MOA Adjustments for Both Windage and Elevation; 29.9" radius	5.5 - 7.5 lbs; 2-Stage Military Trigger	8-Rounds	43.6"	9.5 lbs

M1

INTEGRAL LOCKING SYSTEM, ILS:

Easily locks any 1911 with the simple turn of a key. Replaces the mainspring housing of the pistol, is easy to install and does not require any modification to the pistol. Standard, Hard Chrome: (SL0003) Standard, Blued: (SL0001) Compact, Blued: (SL0002) Compact, Hard Chrome: (SL0004) Standard, Hard Chrome, Checkered: (PI3020) Standard, Blued, Checkered: (PI0089)



11-GEAR-ONE PIECE PADDLE HOLSTER:

Body-hugging one piece design, rugged injection-molded polymer construction. Adjustable tension.



1911 MAGAZINES:

.45 6-round compact magazine: Blued (PI4723) Stainless (PI4726)
 .45 7-round 5" service magazine: Blued (PI4523) Stainless (PI4520)
 .45 10-round service magazine: Blued (PI4421) Stainless (PI4521)
 .45 Hi-Capacity Magazine: Service 5" (PI5445) Ultra-Compact (PI5444)



M1A MAGAZINES:

M1A .308 20-Round High-Capacity Magazine: MA5021



XML, X-TREME MINI LIGHT:

The smallest pistol-mounted tactical light in the world. Size: 2.32"L x 1.56"H Xenon bulb; 50 lumens GE5109



1911-A1 UNIVERSAL™ BELT SLIDE HOLSTER:

Injection molded with accessory rail. (patent pending) GE5107



XD GEAR® MAGAZINE POUCH:

Rugged injection-molded polymer construction. Adjustable tension. Integral Accessory rails. Holds two XD magazines. XD3508 (9mm, 40, 357) XD45ACPMP (45 acp)

M1A TOOLS:

M1A Gas Cylinder Disassembly Tool: MA5060
 M1/M14 Ruptured Shell Extractor USGI: MA5068
 M1A Combo Tool: CC5010
 M1A Pliers for Disassembly of Flash Suppressor: MA5014



XD GEAR® PADDLE HOLSTER:

This rugged, injection-molded holster has integral accessory rails as well as height, cant and 360° rake adjustments. (patent pending) XD3500H



XD GEAR® BELT HOLSTER:

Rugged injection-molded polymer construction with integral accessory rail. XD3501BH



XD GEAR® ONE PIECE PADDLE HOLSTER:

Body-hugging one piece design, rugged injection-molded polymer construction. Adjustable tension. XD3500PH1



SCOPE MOUNT:

M1A Third Generation Scope Mount MA5038





CLOCKS:
1911 Clock GE5824
Crossed Cannons Metal Clock GE5700



CAN COOLIES:
Springfield Pocket Coolie, Red GE5501
XD Pocket Coolie, Black GE5498



COMING IN 2007:
Performance wicking polos.
• XD
• MIA
• Springfield Armory



LONG SLEEVE SWEAT-SHIRT:
GE5707



**TEAM SPRINGFIELD
GOLF TOWEL:**
GE5534



Check out the full assortment of
Springfield Armory caps at:
springfieldarmory.com



DENIM LONG SLEEVE SHIRT:
Team Springfield Logo
GE5413



LONG SLEEVE T-SHIRT
GE5543

800.680.6866
www.springfieldarmory.com
420 West Main Street • Geneseo, Illinois 61254

SPRINGFIELD ARMORY

Specifications and prices are subject to change without notice.
©2007 Springfield Armory. No part of this catalog may be reproduced without the written consent of Springfield Armory.