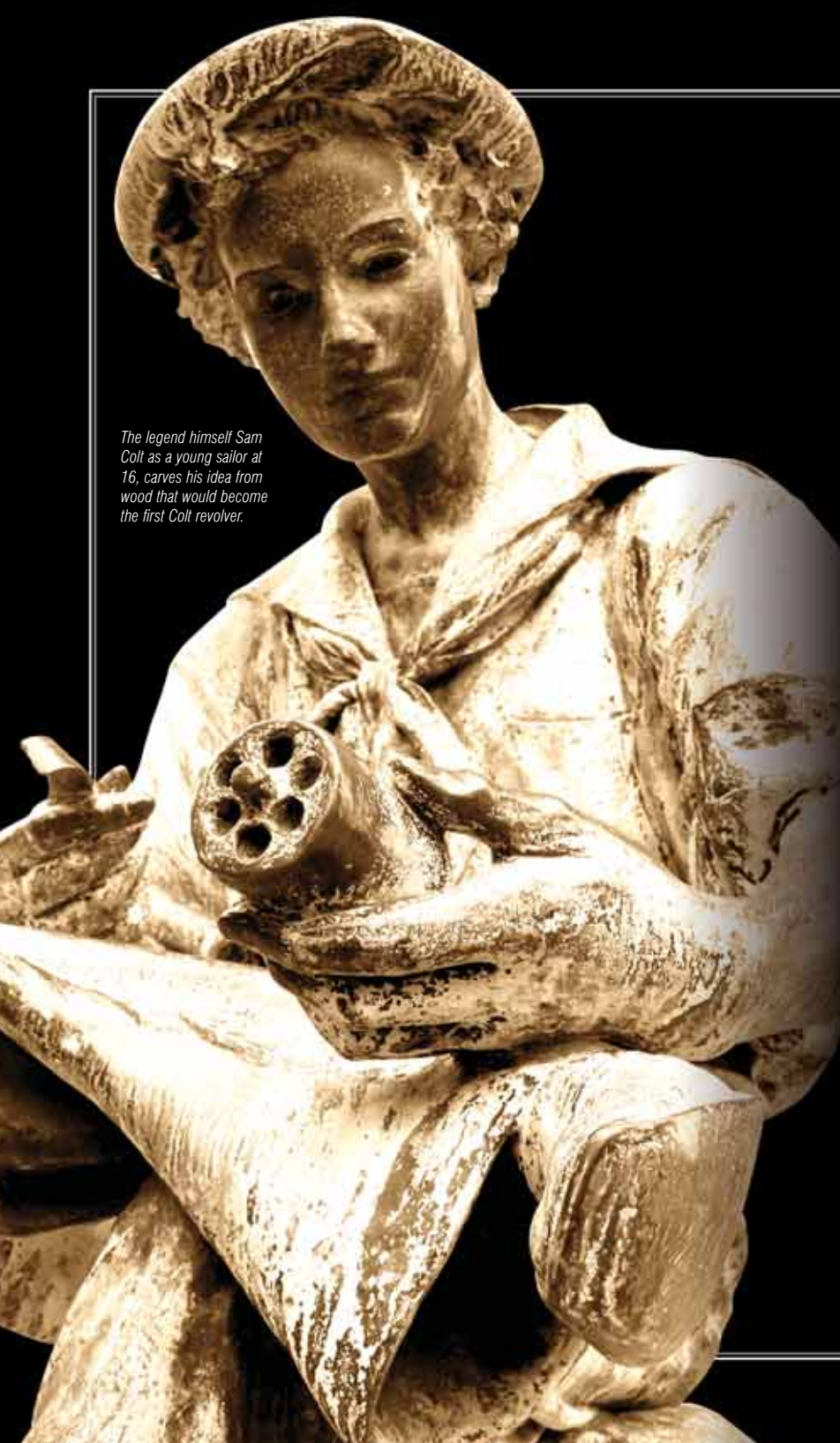


*Sam Colt*





*The legend himself Sam Colt as a young sailor at 16, carves his idea from wood that would become the first Colt revolver.*

# Colt Firearms

The story of Colt®, the firearms company, is written indelibly across the pages of almost two centuries of history. There are millions of arms bearing the Colt name attesting to the company's keen knowledge of shooters' needs coupled with the ability to deliver a quality product.

More than four hundred distinct models of handguns and longarms of muzzle and breech loading designs together with thousands of variations and subtypes are included in this phenomenal accomplishment:

- Percussion black powder classics such as the Walker™ and Dragoon™ models, the 1860 Army™ and 1861 Navy™ revolvers.
- The most famous revolver ever, the 1873 Single Action Army® (or Peacemaker®) that signaled Colt's move into the metallic-cartridge era.
- The Model 1911™ Automatic Pistol that still defines the standard for modern day .45 semiautomatic pistols.
- The Python® model that is considered to be the ultimate double action revolver.

Suffice it to say that no other name has contributed more to the legendary history, or the future ingenuity of American firearms than Colt. That's what makes "Colt" the most revered and collectible name in the history of firearms to this very day, and for the future.

Our legacy for the twenty first century will rest on how well we lay the groundwork today for creating a company that continues to be responsive to consumer needs and depends as much on inventiveness and innovation as it does on technology. We are striving to meet this challenge and to guarantee a secure place for Colt in the pages of history as they unfold in the decades to come.

[www.Coltsmfg.com](http://www.Coltsmfg.com)



# SAA - Single Action Army

## COLT SINGLE ACTION ARMY® REVOLVER

Introduced in 1873, no Colt revolver has earned greater fame than the Single Action Army, The Peacemaker®. In design and performance, in line and form, no more sculptural and practical Colt has ever been created. Movies serve as constant reminders of the role this equalizer played in winning the West.

Large numbers of knock-offs and look-alikes have never been able to replace the real Colt. Records on the SAA are a Who's Who of action-oriented Americans of the late 19th and early 20th centuries. Among others, such names as Buffalo Bill Cody, Theodore Roosevelt, Judge Roy Bean, Pawnee Bill Lilly, Captain Jack Crawford, Wild Bill Hickock, Wyatt Earp, Pat Garrett, General George Patton and many others.

### Features

- Outstanding design and performance
- Blue finish with color case hardened frame
- Black composite Eagle grips
- 2nd Generation style cylinder bushing
- Available with a variety of custom options



P1650

### Available Options

#### Calibers:

- .357
- .32/20
- .38 Special
- .45 Long Colt
- .44/40
- .38/40

#### Barrel Lengths:

- 4¾" barrel length, 10¼" overall length
- 5½" barrel length, 11" overall length
- 7½" barrel length, 13" overall length

#### Finishes:

- Blue / Color Case Hardened
- Nickel



# 1911 - WWI Replica

## COLT 1911 - WWI Replica

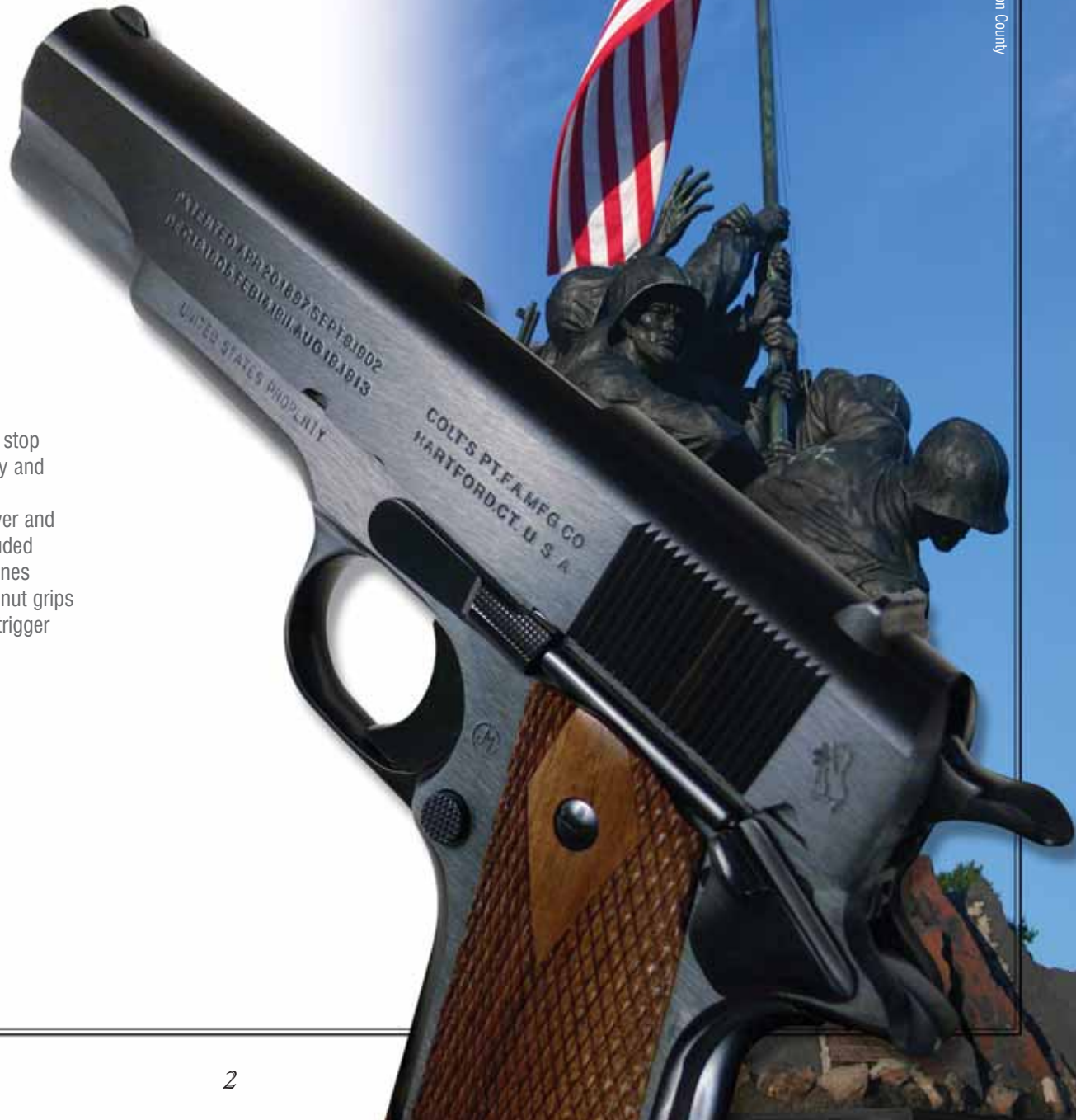
A faithful reproduction of the WWI Model 1911 U.S. Military sidearm. Throughout American History, Colt's weapons have given American Servicemen the confidence to succeed in combat. As the Colt Walker and Peacemaker revolvers contributed immeasurably to American success in past conflicts, Colt's 1911 pistols and their descendents were in the hands of confident, WWI, WWII, Korean and Vietnam American Servicemen. In recognition of the contribution of the Colt .45, Colt reproduces it in detail, including packaging.

### Features

- Reproduction based on the original 1911 blueprints
- Series 70 firing system
- Original rollmarks and inspector marks
- 5" barrel with wide hood
- Smooth, straight mainspring housing with lanyard loop
- WWI-style manual thumb and grip safety
- Tapered blade front sight
- Carbonia blue finish
- Forged knurled slide stop
- Knurled thumb safety and magazine catch
- WWI-style screwdriver and original manual included
- Two 7-round magazines
- Double diamond walnut grips
- Long, smooth steel trigger
- U-notch rear sight



01911





# Defender

## COLT DEFENDER™

The Colt Defender model now offers the power and performance of a full-sized .45 ACP pistol in a compact, lightweight carry model. Small, lightweight, accurate, reliable, with excellent sights and able to withstand everyday wear and frequent practice sessions without the need for extensive maintenance.

### Features

- Wraparound rubber finger groove grips
- Skeletonized aluminum trigger
- Single action
- White Dot Carry Sights
- .45 Caliber
- 3" barrel length
- 6¾" overall length
- Beveled magazine well
- Lightweight
- 7 + 1 round capacity



07000D



COLT  
AUTOMATIC

*Her SAFE guard against harm*



# 1991 Series

## COLT 1991™ SERIES

Colt 1991 Series is a direct descendent of the original Colt 1911A1. After more than 90 years, it's still "The Standard" everyone else imitates, but no one duplicates.

### Features

- Aluminum trigger
- Single action
- Fixed sights
- .45 ACP
- 7 + 1 round capacity
- Beveled magazine well
- Standard thumb safety and service style grip safety



01091

### Available Models

#### 01991 Government Model®

- Blue finish carbon steel frame & slide
- 5" barrel length, 8½" overall length
- Double diamond rosewood grips
- Spur hammer

#### 01091 Government Model®

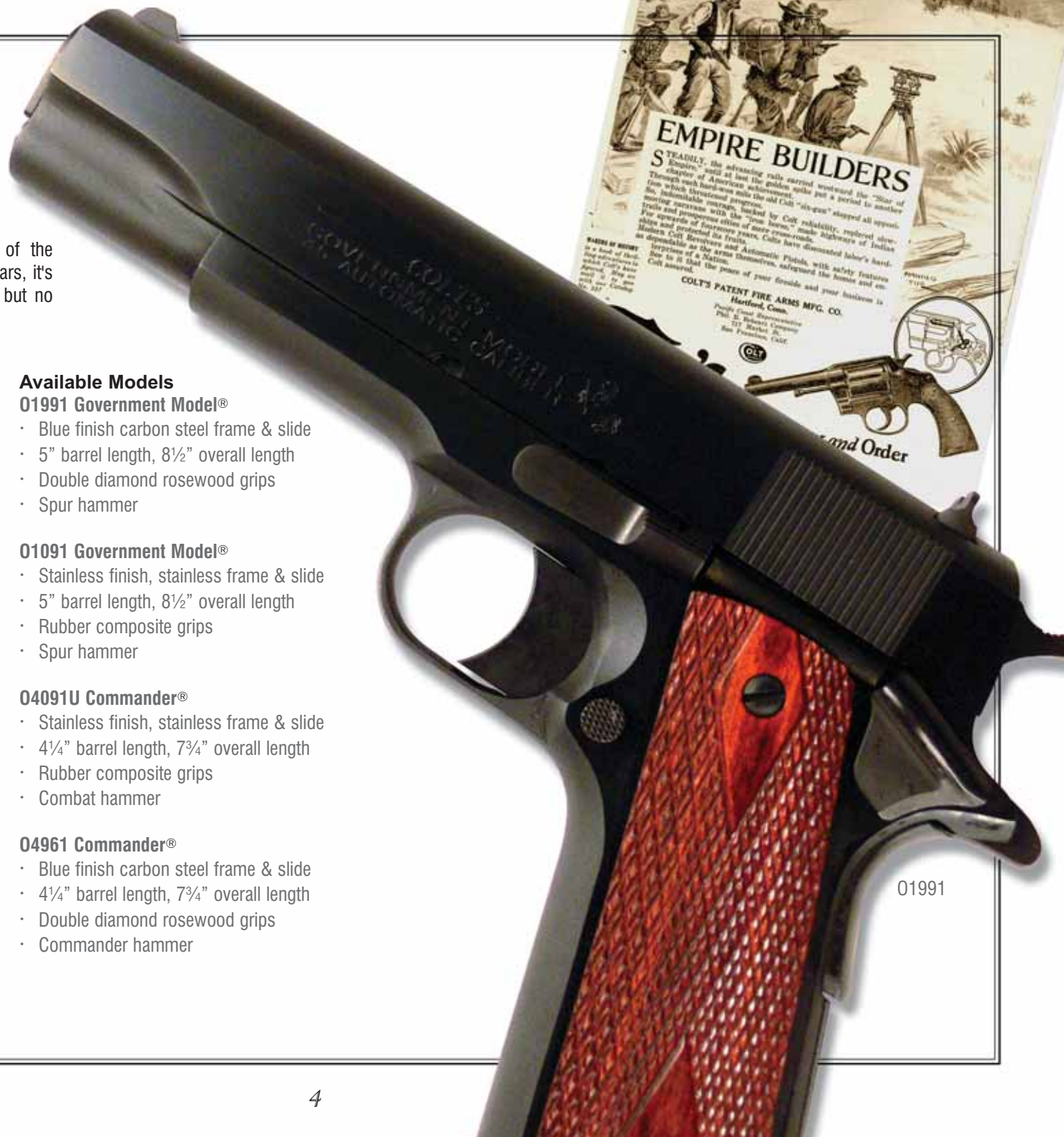
- Stainless finish, stainless frame & slide
- 5" barrel length, 8½" overall length
- Rubber composite grips
- Spur hammer

#### 04091U Commander®

- Stainless finish, stainless frame & slide
- 4¼" barrel length, 7¾" overall length
- Rubber composite grips
- Combat hammer

#### 04961 Commander®

- Blue finish carbon steel frame & slide
- 4¼" barrel length, 7¾" overall length
- Double diamond rosewood grips
- Commander hammer



01991



# XSE Series

## COLT XSE™ SERIES

The XSE Series feature front and rear serrations, an elongated hammer slot, and adjustable skeletonized aluminum trigger. It is available in Government Model®, Commander®, and Lightweight Commander® versions.

### Features

- Front and rear slide serrations
- Checkered, double diamond, rosewood grips
- Extended ambidextrous thumb safeties
- White Dot Carry Sights
- Aluminum trigger
- Elongated hammer slot
- Combat hammer
- New rollmarking and enhanced tolerances
- 8 + 1 round capacity
- Single action



01070XSE



01980XSE

### Available Models

#### 01980XSE Government®

- Blue carbon steel finish
- 5" barrel length

#### 01070XSE Government®

- Stainless brushed finish
- 5" barrel length

#### 04012XSE Commander®

- Stainless brushed finish
- 4¼" barrel length

#### 04860XSE Lightweight Commander®

- Stainless brushed finish
- 4¼" barrel length
- Teflon coated aluminum receiver

#### 04540XSE Lightweight Commander®

- .38 Super
- Stainless brushed finish
- 4¼" barrel length
- Teflon coated aluminum receiver



04860XSE



# .38 Super

## COLT .38 SUPER™

The .38 Super was introduced in 1929 in the famous Colt Government Model 1911 auto pistol. At the time of its introduction the .38 Super was the most powerful auto pistol cartridge in the world. Colt is the only major American gun maker who has produced .38 Super pistols. The .38 Super is one of the most powerful and flat-shooting cartridges available for auto-loading pistols.

### Features

- Single action
- 3 dot sights
- .38 Super
- 9 round magazine
- Beveled magazine well
- Standard thumb safety and service style grip safety



02991



02091

### Available Models

#### 02091

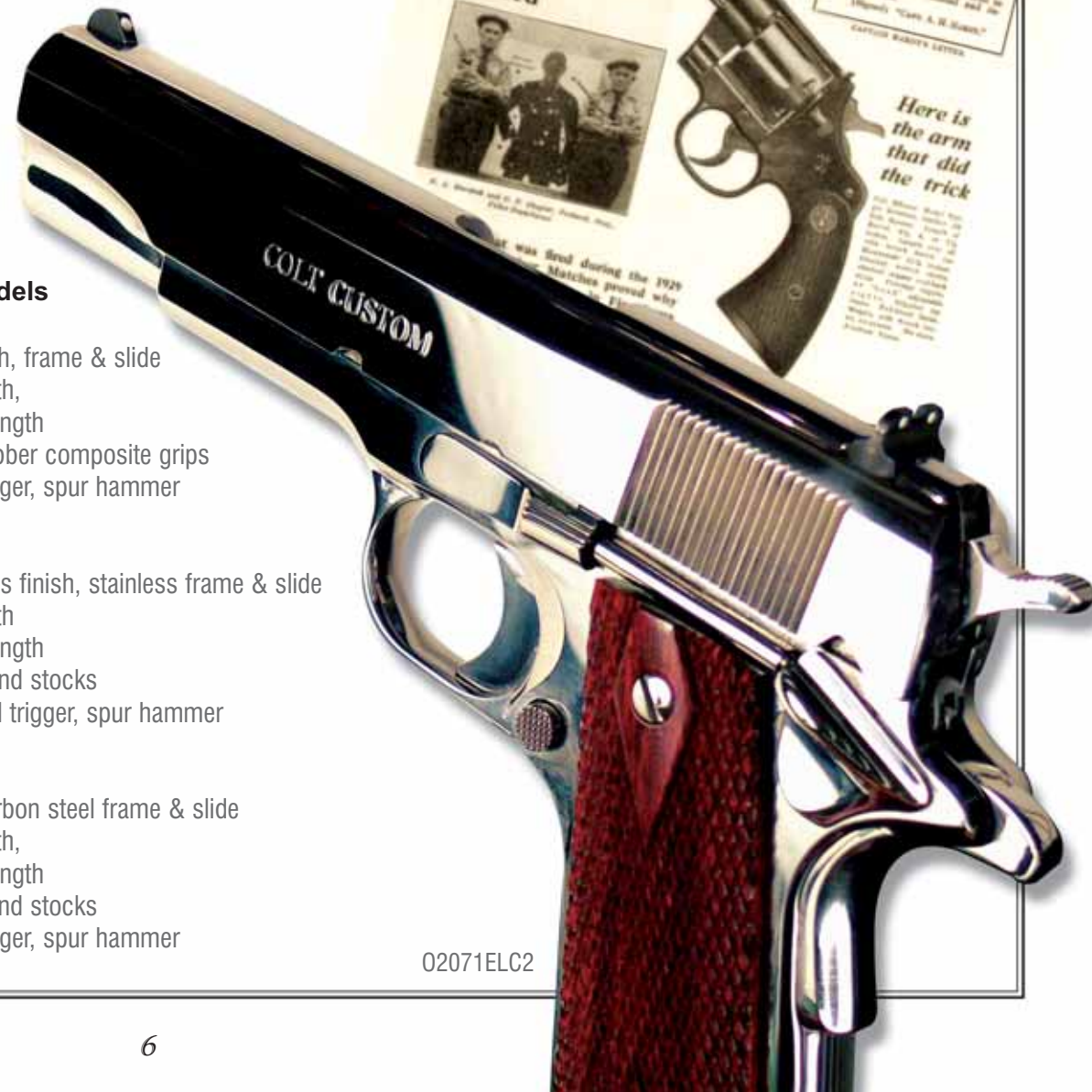
- Stainless finish, frame & slide
- 5" barrel length,
- 8½" overall length
- Checkered rubber composite grips
- Aluminum trigger, spur hammer

#### 02071ELC2

- Bright stainless finish, stainless frame & slide
- 5" barrel length
- 8½" overall length
- Double diamond stocks
- Stainless steel trigger, spur hammer

#### 02991

- Blue finish carbon steel frame & slide
- 5" barrel length,
- 8½" overall length
- Double diamond stocks
- Aluminum trigger, spur hammer



02071ELC2





# Gold Cup Trophy

## COLT GOLD CUP™ TROPHY

The first Colt Gold Cup was introduced in the late 1950's to give competitive shooters a gun to take directly from the dealer's shelf to the firing line. It featured an adjustable wide trigger, hand-honed action, adjustable target sights, flat grooved top rib on the slide, and many other refinements as standard. Today, the Colt Gold Cup is known as the finest shooting automatic in the world, and is the standard for competition guns.

### Features

- 5" Match grade barrel
- Black wraparound grips
- Adjustable aluminum trigger
- Adjustable rear sight
- Beveled magazine well
- Beavertail grip safety
- 8 + 1 round capacity
- Full length recoil spring and target recoil spring

### Available Models

#### 05070X

- Brushed stainless frame and slide
- Colt Champion Bomar style rear sight

#### 05870CS

- Blue carbon steel frame and slide
- Colt Champion Elliason style rear sight



05070X



# Series 70

## COLT SERIES 70™ PISTOL

The legacy of the Government Model® is well known. It is a combat proven weapon that has tirelessly served our Armed Forces in past conflicts. Colt's Series 70 pistol features the Series 70 firing system, making it a faithful reproduction and throwback to Colt Government Models manufactured during the 1970's. It is a rugged and dependable Colt that features high maintainability and sustains repeatable accuracy.

### Features

- Series 70 custom replica
- 5" barrel
- Double diamond rosewood grips
- Original rollmarks
- Fixed sights
- Original Series 70 firing system
- Blue or stainless finish



01970A1CS



01070A1CS



# Special Combat Government

## COLT SPECIAL COMBAT GOVERNMENT™

This competition ready .45 ACP comes with skeletonized trigger, S&A® grip safety, custom tuned action, polished feed ramp, throated barrel, flared ejection port, cutout Commander hammer, two 8-round magazines with base pads, extended ambidextrous thumb safety, Bomar® rear and Heinie® dovetail front sight, and S&A® magazine guide. Fully accurized and shipped with a certified target attesting to its exceptional precision.

### Features

- 5" barrel length
- 8½" overall length
- Single action
- 8 round magazine
- Double diamond rosewood grips
- Extended ambidextrous thumb safety
- Steel checkered mainspring housing with extended magazine well

### Available Models

#### 02570CM

- .38 Super caliber
- Hard Chrome finish

#### 02580CM

- .38 Super caliber
- Blue / Satin nickel finish

#### 01970CM

- .45 ACP caliber
- Hard Chrome finish

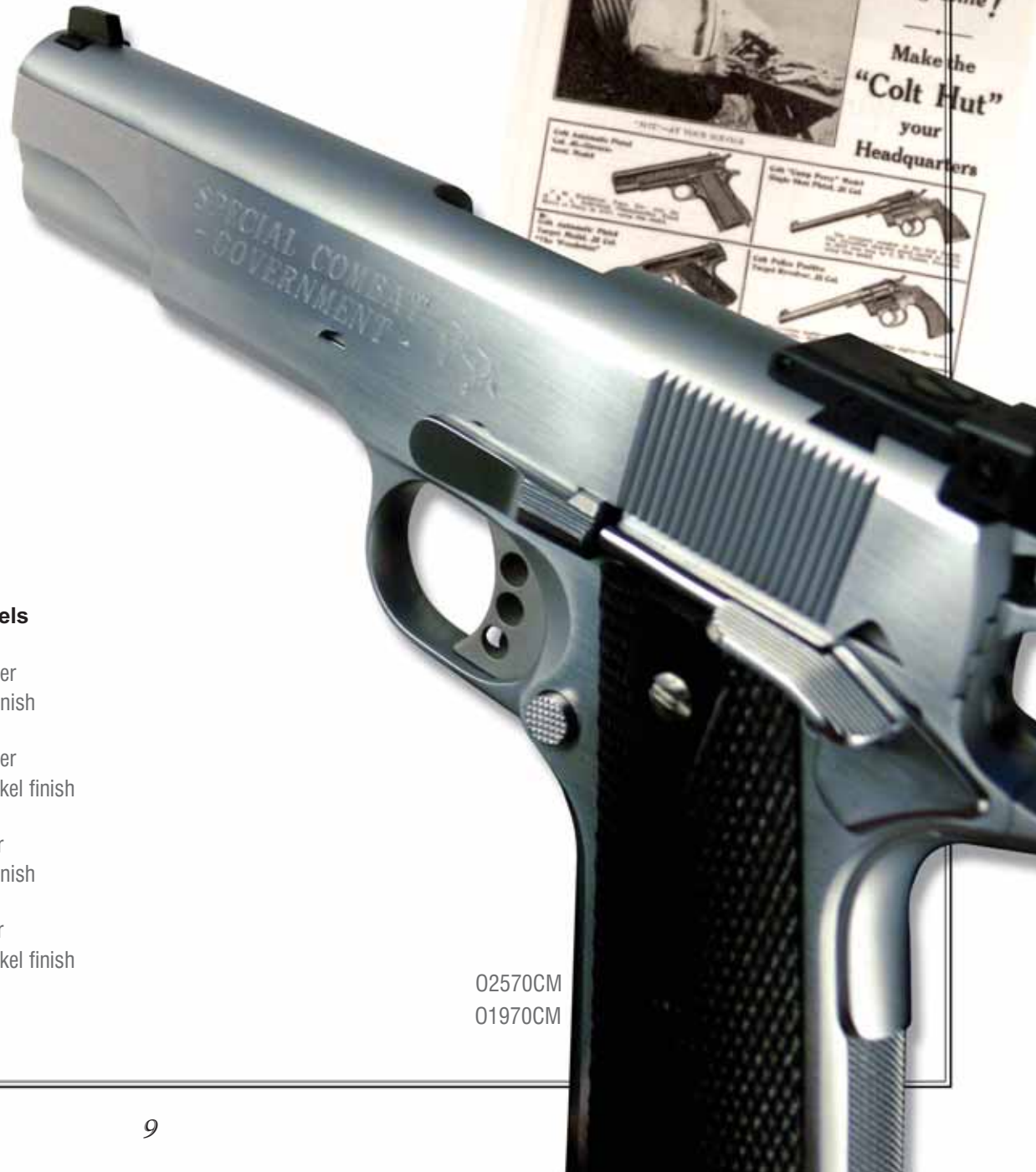
#### 01980CM

- .45 ACP caliber
- Blue / Satin nickel finish



02580CM

01980CM



02570CM

01970CM



## Match Target Rifles

### COLT MATCH TARGET® RIFLES

While the Colt name is virtually synonymous with handguns, longarms were the first revolving firearms off of Sam Colt's assembly line. That's right! The first production model of any Colt was the No.1 Ring Lever Rifle. The carbine breech (attachable shoulder stocks for handguns) and America's first slide action rifle were also part of Colt's on-and-off ventures into longarms. Then in 1963 the AR-15® and M16™ .223 (5.56mm) automatic rifles "made Colt's the small-arms sensation of modern warfare". Their unmatched accuracy, performance and durability are available in their direct descendents, the Colt semiautomatic-only, sporting rifles. They're ideal for hunting, plinking and competition shooting.

#### Features

##### FINISH ACTION

- Matte black
- Semi Auto
- Gas operated
- Multi-lug rotary locking bolt
- .223 Rem
- 9 Rounds
- 6
- Smooth
- Adjustable post for elevation
- Adjustable for windage and elevation

##### CALIBER

##### CAPACITY

##### RIFLING GROOVES

##### TRIGGER

##### FRONT SIGHT

##### REAR SIGHT

#### MODEL NAME

#### BARREL LENGTH

#### RIFLING TWIST

#### SIGHT RADIUS

#### WEIGHT

#### OVERALL LENGTH

#### SPECIAL FEATURES

#### MT6601 / MT6601C

- Match Target
- HBAR
- 20"
- RH. 1 Turn in 7"
- 20¼"
- 8.0 lbs
- 39"
- Compensator (MT6601C)

#### MT6700 / MT6700C

- Match Target
- Competition HBAR
- 20"
- RH. 1 Turn in 9"
- 20¼"
- 8.5 lbs
- 39"
- Compensator (MT6700C)
- Flat top receiver allows for scope

#### MT6731

- Match Target
- Competition HBAR
- 16"
- RH. 1 Turn in 9"
- 20¾"
- 7.1 lbs
- 34½"
- Flat top receiver allows for scope



# Match Target M4



## COLT MATCH TARGET® M4

In 1963 the AR-15 and M16 .223 (5.56mm) automatic rifles “made Colt’s the small-arms sensation of modern warfare”. The Match Target M4 Carbine is the commercial version of M4 Carbine currently being supplied to the US Government and provides the same unmatched accuracy, performance and durability.

### Features

- |                         |   |
|-------------------------|---|
| <b>MODEL</b>            | · MT6400C                                     |
| <b>NAME</b>             | · Match Target M4                             |
| <b>FINISH</b>           | · Matte black                                 |
| <b>ACTION</b>           | · Semi Auto                                   |
|                         | · Gas operated                                |
|                         | · Multi-lug rotary locking bolt               |
| <b>CALIBER</b>          | · .223 Rem                                    |
| <b>CAPACITY</b>         | · 9 Rounds                                    |
| <b>BARREL LENGTH</b>    | · 16.1”                                       |
| <b>RIFLING TWIST</b>    | · RH. 1 Turn in 7”                            |
| <b>RIFLING GROOVES</b>  | · 6   |
| <b>TRIGGER</b>          | · Smooth                                      |
| <b>FRONT SIGHT</b>      | · Adjustable post for elevation               |
| <b>REAR SIGHT</b>       | · Adjustable for windage and elevation        |
| <b>SIGHT RADIUS</b>     | · 14-¾”                                       |
| <b>WEIGHT</b>           | · 7.32 lbs                                    |
| <b>OVERALL LENGTH</b>   | · 35”   |
| <b>SPECIAL FEATURES</b> | · Flat top receiver allows for scope mounting |
|                         | · Compensator                                 |



# Colt Accurized Rifle

## COLT ACCURIZED™ RIFLE

The Colt Accurized Rifle is the improved version of our Match Target line of rifles. There are many features that enhance the shooting experience of this rifle, from the flat top receiver which will allow for many types of optics, to the floating, stainless steel heavy barrel which greatly improves accuracy. The Colt Accurized Rifle is the choice for the shooter who wants the look and feel of the M16, but requires the accuracy of a competition range .223 rifle.

### Features

<b>MODEL</b>	· CR6724
<b>NAME</b>	· Colt Accurized Rifle
<b>FINISH</b>	· Matte black with stainless steel barrel
<b>ACTION</b>	· Semi Auto
	· Gas operated
	· Multi-lug rotary locking bolt
<b>CALIBER</b>	· .223 Rem
<b>CAPACITY</b>	· 9 Rounds
<b>BARREL LENGTH</b>	· 24"
<b>RIFLING TWIST</b>	· RH. 1 Turn in 9"
<b>RIFLING GROOVES</b>	· 6
<b>TRIGGER</b>	· Smooth
<b>FRONT SIGHT</b>	· <i>custom</i>
<b>REAR SIGHT</b>	· <i>custom</i>
<b>WEIGHT</b>	· 9.25 lbs
<b>OVERALL LENGTH</b>	· 43"
<b>SPECIAL FEATURES</b>	· Flat top receiver allows for scope mounting
	· Stainless steel heavy barrel
	· Tubular handguard
	· Free floating barrel



# Colt Custom Shop



## DESIGN YOUR OWN

The Colt Custom Shop can assist you in designing and creating your one-of-a-kind heirloom, providing an array of options. Select the amount and style scroll engraving; your personal design, figure and inscription; the material you want to use for any inlay; and your choice of finishes. Select grips are also available. Design your own competition gun with many custom options: barrels, slides, sight systems, hammers, triggers and trigger guards, safeties, magazines, grips and finishes. The Colt Custom Shop will fine tune and accurize your competition gun for ultimate performance.

## ENGRAVING COVERAGE

Custom engraving can enhance the beauty of a historical revolver or the sleek lines of a new semi-automatic pistol. Level A provides one quarter coverage, producing the effect of delicate embellishment, while complete coverage at Level D creates a uniquely decorative showpiece for any collector. Level B and C offer engraving coverage that might highlight specifically chosen areas of the firearm such as the cylinder of a revolver or the barrel of a pistol.

## STYLES OF ENGRAVING

The Colt Custom Gun Shop offers several styles of engraving, each with its own unique features. Scrollwork is adapted to fit the size, shape and contour of every firearm. Three grades of engraving are offered: *Standard*-basic American style, engraver not recorded; *Expert*-master quality scroll work, engraver signed and recorded; and *Master*-intricate scrollwork with precious metal inlays, signed by the engraver and recorded.

**AMERICAN:** Developed in the mid-19th century, this is the most popular engraving style for American firearms.

**ENGLISH:** English engraving is more delicate than the American style, with tighter scrolls and finer shading.

**NIMSCHKE:** Nimschke is named for the firearms engraver who helped create the American style. This design features rich scrollwork, a heavily punched dot background, fine edge curls and delicate borders.

AMERICAN

ENGLISH

NIMSCHKE



## CUSTOM GRIPS AND ACCESSORIES

Offered in the Colt Custom Shop are custom grips made of several materials including Buffalo horn, Walnut, Rosewood, Ivory, North American Elk and Ebony. Hand checkering in a plain or double diamond pattern are also offered. Special edition grip medallions may be requested and produced in accordance with your specifications, including choice of metal, finish and decorative motif or symbol.



# Colt Custom Packages

## COLT CUSTOM PACKAGES

An economical custom package will greatly enhance the value of your Colt. Take us up on this great offer to make an addition to your collection that will be treasured for generations!



## MODEL O® PISTOL PACKAGE

### Features

- Novak rear sight
- Dovetail front sight
- Upswept grip safety
- Dehorned



01991Z - Custom

## MODEL P® PISTOL PACKAGE

### Features

- Standard American scroll engraving
- Level B engraving coverage



P1840Z - Custom



*The Colt Custom Shop  
gold seal container.*



# Archive Services

## ARCHIVE LETTER

Considered one of the most unique and prestigious services offered by Colt, the Archive Letter is universally recognized as an unparalleled investment in firearms collecting. The Archive Department will search through Colt's vast archives to provide you with accurate and documented details confirming the original specifications and delivery of your particular Colt firearm. You will then receive a personal letter outlining all the fine points of your firearm, written on Archive Department's distinctive stationery, embossed with the official seal and signature of the Colt Historian.

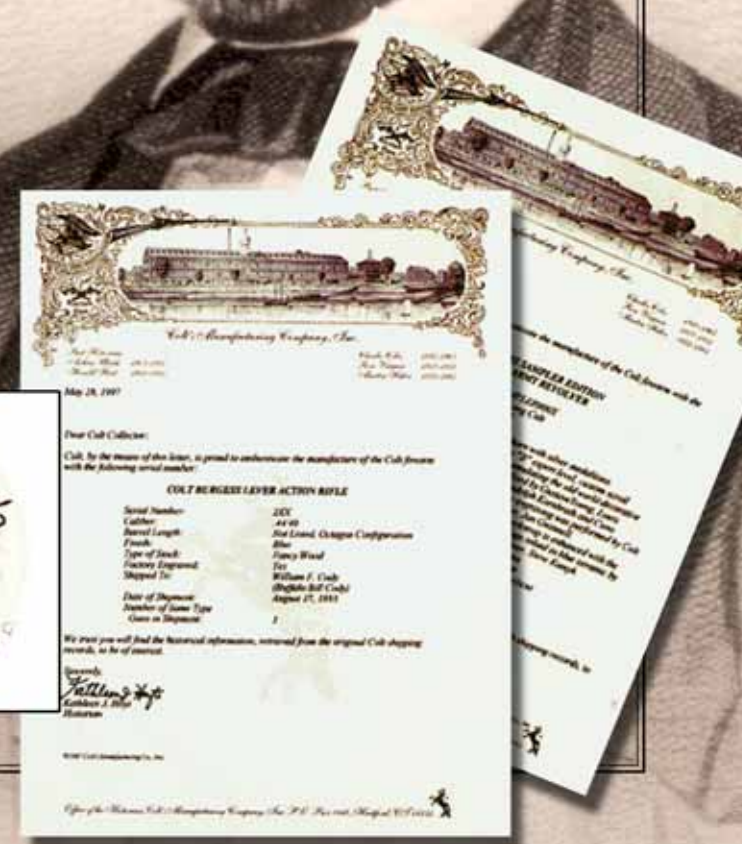
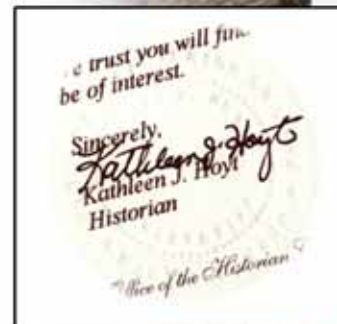
Whether your Colt is a treasured family heirloom or a more recent purchase, a Colt Archive Letter can provide fascinating and valuable information of historical or anecdotal importance. The collectability of the piece referred to in a Colt Archive Letter is significantly enhanced. The value of your Colt is often greatly enhanced when it is authenticated in this exceptional fashion. Colt Archive Letters can provide descriptive details about custom engraving and other special features that will ensure the value of the firearm for future generations to treasure.

## HOW IT ALL STARTED

More than 160 years ago, an obscure young seaman, Calcutta bound, carved from a block of wood a model of what was destined to become the world's most famous revolver. His name was Samuel Colt, and from the spark of his inventive genius came the modern firearms of today. One would have to search diligently through the pages of history to find a more romantic and glamorous figure than Samuel Colt. His was the mind of a genius, a planner and a dreamer, all in one. His vision was not local, but worldwide. His ambition exceeded mere prosperity and power. Complete satisfaction could only be his when he had reached the pinnacle of his chosen field. His own deeds and the life he lived have immortalized him, and the products that still bear his name are a constant tribute to his ability and his resourcefulness. Samuel Colt's effort to market his inventions is a record of amazing courage, ingenuity, and perseverance. That one so young in years and so handicapped by poverty and lack of prestige could prevail against such odds is one of the marvels of individual American enterprise.

*Archive letters are embossed with the official seal and signature of the Colt Historian.*

*Please contact us or refer to our website for information regarding researchable models as well as prices.*



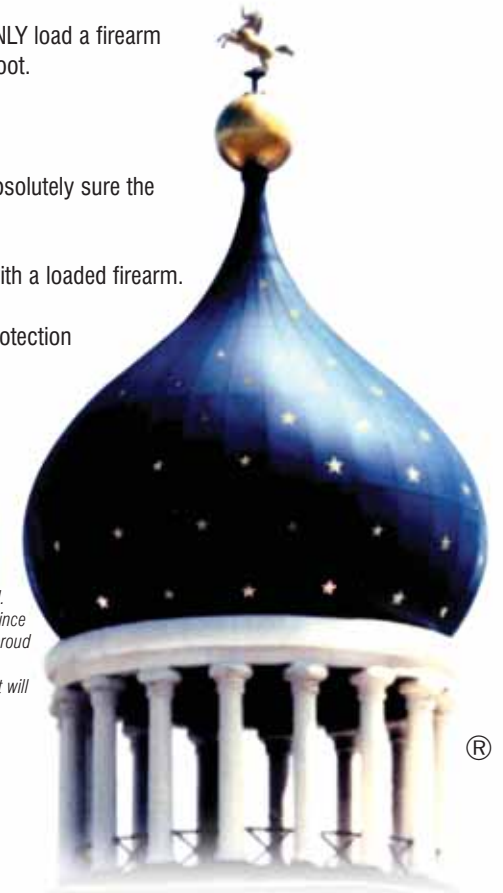


## Responsible Handling of Firearms

Colt's has long been committed to policies and practices that promote the responsible design, distribution and sales of firearms to qualified, law-abiding purchasers who seek to purchase and use firearms for legitimate purposes in a safe and responsible manner. Those who purchase and handle firearms have a responsibility to themselves and others to use firearms safely. The Basic Firearm Safety Rules set forth below establish a foundation for gun safety. Please remember, however, that these Rules are ONLY a starting point for the safe handling of firearms within our community.

- THOROUGHLY read the safety and instruction manual supplied with your firearm before handling.
- ALWAYS use the proper ammunition for your particular firearm.
- ALWAYS treat every firearm as if it were loaded.
- ALWAYS refer to the operation manual if your firearm fails to fire.
- ALWAYS check to make sure that the firearm is not loaded before giving it to another person.
- NEVER alter or modify your firearm.
- IMMEDIATELY check to make sure that the firearm is not loaded when receiving it from another person.
- NEVER shoot a firearm at hard surfaces or water.
- ALWAYS check to make sure a firearm is not loaded when picking it up.
- NEVER transport a loaded firearm and ONLY load a firearm at the destination where you intend to shoot.
- NEVER chamber a round until ready to shoot.
- ALWAYS properly maintain your firearm.
- NEVER leave a loaded firearm unattended.
- ONLY clean your firearm when you are absolutely sure the firearm is unloaded.
- ALWAYS store unloaded firearms and ammunition in separately secured locations, so that children and untrained adults cannot gain access to them.
- NEVER climb a tree, fence, or obstacle with a loaded firearm.
- NEVER point a firearm at anything you do not intend to shoot regardless of whether the firearm is unloaded or on safety.
- ALWAYS wear appropriate ear and eye protection when shooting or observing.
- NEVER consume alcoholic beverages or mind altering drugs before or during handling of firearms.
- ALWAYS make sure that the target and the area surrounding the target are safe before shooting
- NEVER rely on the firearm's safety mechanism and ALWAYS abide by safety rules regardless of whether the firearm is unloaded or on safety.
- ALWAYS make sure the barrel of the firearm is clear of obstructions according to the safety and instruction manual.
- ONLY place your finger on the trigger when you are actually aiming at a safe target and have made the decision to fire.

*The Colt Dome gleams in the sun on the bank of the Connecticut River in Hartford. Here today as it has been since 1855 to show the world a proud legacy, a feat of American ingenuity and a product that will stand the test of time.*



***If you have any safety questions concerning our products, please contact us.***



# Contacting Colt

## CUSTOMER SERVICE

Colt's Manufacturing Company LLC  
P.O. Box 1868, Hartford, CT, 06144, USA

Tel: 1-800-962-COLT

Fax: (860) 244-1449

[www.coltsmfg.com](http://www.coltsmfg.com)

## SHIPPING ADDRESS

CMC

2 Talcott Road, West Hartford, CT, 06110, USA

## CORPORATE OFFICE

Colt's Manufacturing Company LLC  
545 New Park Avenue, West Hartford, CT, 06110, USA

Tel: (860) 236-6311

Fax: (860) 244-1442

## WARNING

Be a safe shooter - never chamber a round until you are ready to shoot. Be aware of state and local firearms regulations. Always read and follow the instruction manuals which accompany each firearm. Free instruction manuals and catalogues are available from the factory upon request.

[www.Coltsmfg.com](http://www.Coltsmfg.com)



### *The Legend of the Rampant Colt*

*Though his rider  
has fallen in the fight,  
A broken spear  
the rampant colt grips tight.  
His bravery in battle  
shown on the crest,  
A broken lance  
upon his chest.*

**VINCIT QUI PATITUR**  
*He Conquers Who Endures*



## Colt's Manufacturing Company LLC

P.O. Box 1868, Hartford, CT, 06144, USA  
Tel: 1-800-962-COLT, (860) 236-6311, Fax: (860) 244-1449  
[WWW.COLTSMFG.COM](http://WWW.COLTSMFG.COM)

