

**PROUD LAW ENFORCEMENT SUPPORTER**

In addition to providing military and law enforcement agencies with the superior optics they need to fulfill their missions, Leupold is proud to be a member of the following organizations:

ASLET—The American Society of Law Enforcement Trainers

IALEFI—The International Association of Law Enforcement Firearms Instructors

NTOA—The National Tactical Officers Association

NRA—The National Rifle Association



**THE LEUPOLD FULL LIFETIME GUARANTEE**

Leupold and Stevens, Inc. is a family owned, fourth generation company that has been manufacturing precision optical instruments in the U.S. for nearly 100 years. Leupold's success has been built on our commitment to your absolute satisfaction and our commitment to building the best optics for the shooting sports and for the law enforcement/military community. It's for these reasons that we offer the Leupold Full Lifetime Guarantee.

If any Leupold Golden Ring product is found to have defects in materials or workmanship, we will, at our option, repair or replace it. FREE. Even if you are not the original owner. No warranty card is required. No time limit applies.

Certain special purpose products are covered by specific warranties in regard to their own individual features. For more information, please consult the Leupold Web site at [www.leupold.com](http://www.leupold.com).

**LEUPOLD WIND RIVER® LIMITED LIFETIME WARRANTY**

Leupold Wind River optics are engineered and manufactured to standards set and monitored by the design engineers at Leupold's Oregon factory. The goal is to provide you with reliable performance at a reasonable price.

Should service ever become necessary, these fine optics are covered by the Leupold Wind River Limited Lifetime Warranty. All service work is preformed by the same Leupold Product Service Specialists who work on our Leupold Golden Ring products here in Oregon.

**LEUPOLD MARK 4 OPTICAL PRODUCTS WARRANTY**

Warranties on Leupold Mark 4 optical products vary depending on use and other factors. For more information regarding the warranties on these products, contact Leupold at 503-526-1400.

Leupold & Stevens, Inc., PO Box 688, Beaverton, OR 97075-0688  
14400 NW Greenbrier Parkway, Beaverton, OR 97006-5790 USA

[www.leupold.com](http://www.leupold.com)

This publication may not be reprinted or otherwise reproduced without the expressed written consent of Leupold & Stevens, Inc. Copyright © 2004 Leupold & Stevens, Inc. All rights reserved.

**2004 TACTICAL OPTICS**



**LEUPOLD**  
AMERICA'S OPTICS AUTHORITY™

## Leupold® Mark 4® — Answering The Call

When the United States military needed a new riflescope that would not only function, but excel in combat, the harshest environment on earth, Leupold® answered the call with the ULTRA scopes specifically designed to fit that purpose. With the ULTRA, we set the standard in tactical optics, and we continue to do so today. The Leupold Mark 4® series, which evolved from that first call by our armed forces, has become the benchmark for all tactical riflescopes to follow.



### LEUPOLD MARK 4 SCOPES

LR/T—4

MR/T—8

PR—10

CQ/T—12

Mounting Systems—14

### SPOTTING SCOPES

Mark 4/Golden Ring—16

Sequoia—18

### BINOCULARS

Wind River RB800—18

Golden Ring/Wind River—20

Wind River—22

### ACCESSORIES—24

### PRODUCT FEATURES—26

"Mission Specific" has become the driving force behind the creation of Leupold® Mark 4® optics. What that means is that we don't simply build products for military operators or law enforcement officers without fully understanding their mission requirements. We seek their input. They seek our advice. The results are products that meet specific user requirements and as many mission contingencies as possible. Leupold optics are the overwhelming choice of military and police professionals in the United States and around the world, this tells us we're accomplishing our mission.

Today, Leupold® Mark 4® riflescopes are used to watch over police SWAT teams as well as by the police who patrol the streets daily. They're being used on frigid mountaintops in Afghanistan, in the searing desert heat of Iraq, and in the wet, steaming jungles of

the Philippines. Leupold's philosophy helped create the riflescopes that have come to define tactical optics. For rugged dependability and absolute waterproof integrity in the most extreme conditions imaginable, for sheer optical excellence and flexibility, and finally, for fail-safe accuracy every shot, the Leupold Mark 4 line of riflescopes has no equal.

Everyone from special operations soldiers forward deployed across the globe in defense of freedom, to law enforcement officers serving and protecting their community on a tight budget deserves the most rugged, accurate, dependable optics anywhere. You'll find optics designed for your specific mission's needs in Leupold's newly expanded Mark 4 line-up. At Leupold, we feel we're helping keep our communities safe, as well as helping to defend the nation.

So whether you need the extreme long-range scope, the ultimate fast entry/close quarter combat optic, or something in between, Leupold is ready with Mark 4 optics that are specifically matched to both the mission and your unique conditions.

**Optics for Every Mission Profile**  
Leupold Mark 4 optics are grouped by mission profile, to help you find the optics that are right for the job. For everything from clearing a building to area containment, turn to Leupold Mark 4 Close Quarter/Tactical (CQ/T®) optics. Our MRT™ (Mid Range/Tactical) riflescopes are for that middle ground between short and long range. When serious precision at long distance is a must, so is a Leupold LR/T™ (Long Range/Tactical) riflescope. Each category overlaps with the next for total mission coverage...simply put, there's a Leupold Mark 4 optic to cover any situation.

## New Tactical Optics for 2004



3-9X40MM PR

### New! Leupold Mark 4 PR Scopes

The Mark 4 3-9x40mm PR and the Mark 4 3.5-10x40mm PR with target knob adjustments, as well as the Mark 4 4.5-14x40mm PR Long Range with side focus adjustment deliver Leupold performance at a cost any department can afford.



3-9X36MM MR/T M1 ILLUM. RETICLE

### New! Leupold Mark 4 Mid Range/Tactical Riflescopes

The Mark 4 3-9x36mm MR/T riflescope has already seen combat in both the liberation of Afghanistan and Iraq.

### New! Fully Illuminated Mil Dot Reticles

No longer is just the center of the Leupold Illuminated Mil Dot reticle lit...now the entire center section of the reticle from post to post will be illuminated.



### New! Leupold Golden Ring® 15-30x50mm Compact Spotting Scope

At only 11 inches in length and weighing a mere 21.5 ounces, the Leupold Golden Ring® 15-30x50mm Compact spotting scope combines the magnification needed for long distances in a package small enough to carry in a cargo pocket, the glove box of a car, or in a soldier's web gear or fanny pack.



LEUPOLD GOLDEN RING 15-30X50MM



## Longest Shot

In 2002, during Operation Anaconda in Afghanistan, a Canadian Sniper using a Leupold Mark 4 16x40mm LR/T M1 rifle scope successfully engaged a target at the astounding distance of 2,430 meters. This is the longest recorded sniper shot in history.

### MARK 4 LR/T MODELS

MARK 4 LR/T MODELS	RETICLE & PART NUMBER
3.5-10X40MM LR/T M1	DUPLEX 52218
	• DUPLEX 53666
	• MIL DOT 52128
3.5-10X40MM LR/T M3	DUPLEX 51182
	• DUPLEX 53670
	• MIL DOT 51850
4.5-14X50MM LR/T M1	DUPLEX 54660
	• DUPLEX 56060*
	• MIL DOT 54560
4.5-14X50MM LR/T M1 METRIC (.5CM)	• MIL DOT 57045*
	MIL DOT 54680
	• MIL DOT 56080*
8.5-25X50MM LR/T M1	MIL DOT 54690
	• MIL DOT 56090*

\* NEW FOR 2004  
 • ILLUMINATED RETICLE  
 MATTE BLACK FINISH ON ALL MODELS

Some say long range shooting is a matter of luck. We prefer not to leave something this important to chance. Leupold Long Range/Tactical optics give you as much control as possible over this extreme type of shooting. With the LR/T riflescopes, we've given you the tools to do the job, the rest is up to you.

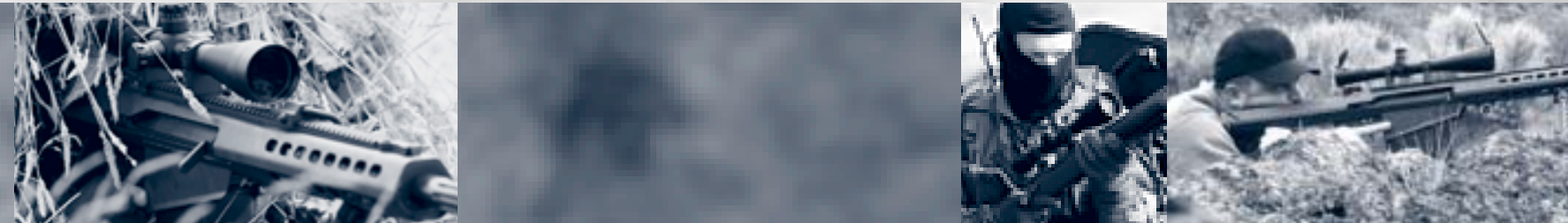
**New!** Index Matched Lens System for the highest levels of light transmission and the brightest sight picture possible

M1 dials have 1/4-MOA "click" adjustments

M3 dials have 1/2-MOA windage dials and 1-MOA elevation dials

**Audible, tactile clicks** let you adjust with extreme precision

### L O N G R A N G E / T A C T I C A L



30mm maintubes for increased windage and elevation adjustment

Finger-adjustable, knurled windage and elevation adjustment dials in two styles — the tall M1 dials or bullet drop compensation marked M3 dials

**New!** Fully Illuminated Mil Dot reticles available in some models

Butler Creek® Flip-Open Lens Covers come standard with all Mark 4 LR/T riflescopes

Made in the U.S.A.

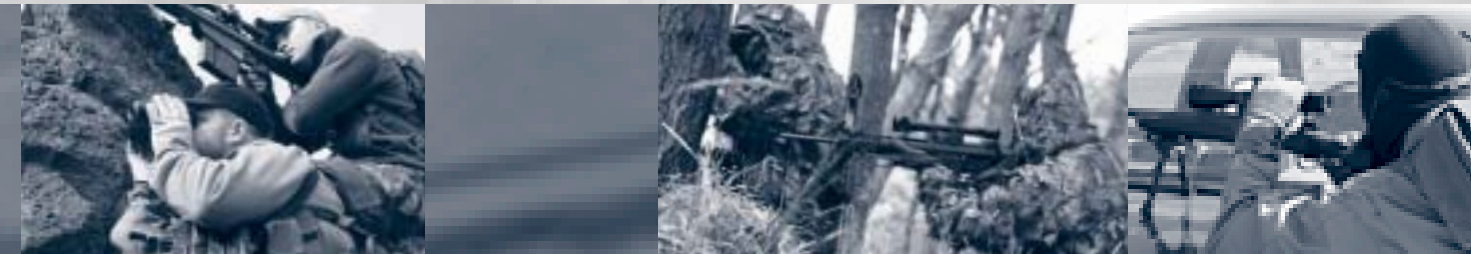


3.5-10X40MM LR/T M1 ILLUM. RETICLE  
 ALSO AVAILABLE IN M3 AND NON-ILLUMINATED MODELS

4.5-14X50MM LR/T M1 ILLUM. RETICLE  
 ALSO AVAILABLE IN METRIC (.5CM) AND NON-ILLUMINATED MODELS

6.5-20X50MM LR/T M1 ILLUM. RETICLE  
 ALSO AVAILABLE IN NON-ILLUMINATED MODELS

8.5-25X50MM LR/T M1 ILLUM. RETICLE  
 ALSO AVAILABLE IN NON-ILLUMINATED MODELS



L O N G R A N G E / T A C T I C A L

These three Leupold LR/T models — the Mark 4 10x40mm LR/T M1, Mark 4 16x40mm LR/T M1, and Mark 4 10x40mm LR/T M3 — are arguably among the toughest, highest-performing riflescopes you'll find anywhere. It's no surprise that the Mark 4 10x40mm LR/T M3 was chosen as the primary day optic of the U.S. Army M-24 Sniper System. The reasons why are clear. These scopes offer:

- Superior edge-to-edge sharpness across visual field and outstanding low-light capability
- Adjust for parallax for specific ranges from 50 yards to infinity using turret mounted focus knob, without taking your eyes off the target
- Audible, tactile "click" windage and elevation adjustments

- 30mm maintubes offer extended windage and elevation adjustment travel
- Maintubes milled from one solid piece of 6061-T6 aircraft aluminum
- Once sighted-in, adjustment knobs can be zeroed
- Made in the U.S.A.

MARK 4 LR/T MODELS	RETICLE & PART NUMBER	
10x40MM LR/T M1	DUPLEX MIL DOT	45578 48431
10x40MM LR/T M3	DUPLEX MIL DOT	45582 47638
16x40MM LR/T M1	DUPLEX TARGET DOT MIL DOT	45580 45581 50541

\* NEW FOR 2004  
 • ILLUMINATED RETICLE  
 MATTE BLACK FINISH ON ALL MODELS



10x40MM LR/T M1      10x40MM LR/T M3      16x40MM LR/T M1

MR/T™



M I D R A N G E / T A C T I C A L

MARK 4 MR/T MODELS RETICLE & PART NUMBER

MARK 4 MR/T MODELS	RETICLE & PART NUMBER
3-9X36MM MR/T M1	DUPLEX 57080*
	• DUPLEX 57060*
	MIL DOT 57070*
	• MIL DOT 57050*
3-9X36MM MR/T M3	MIL DOT 57075*
	• MIL DOT 57055*

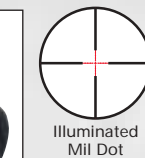
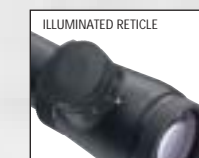
\* NEW FOR 2004  
 • ILLUMINATED RETICLE  
 MATTE BLACK FINISH ON ALL MODELS

The Leupold Mark 4 3-9x36mm MR/T was specifically designed to maximize the performance of AR-style firearms, then refined based on input from the field. For everything from 50 to 700 meters, this is the scope you can count on to help get the job done because we gave it everything you would.

**30mm maintubes** for increased windage and elevation adjustment

**Eye relief optimized** for AR-style systems to compensate for stock size

**Leaves ample space** on upper receiver for additional accessories



**Finger-adjustable, knurled windage and elevation adjustments** in two styles, the tall M1 dials or bullet drop compensation marked M3 dials

**M1 dials** have 1/4-MOA "click" adjustments, while the M3 dials have 1/2-MOA windage dials and 1-MOA elevation dials

**New! Fully Illuminated Mil Dot or Duplex® reticles** available

**Audible, tactile clicks** for precision adjustments

**Incredibly rugged and waterproof**  
**Made in the U.S.A.**



3-9X36MM MR/T M1

3-9X36MM MR/T M1 ILLUM. RETICLE

3-9X36MM MR/T M3

3-9X36MM MR/T M3 ILLUM. RETICLE



P R E C I S I O N R I F L E

The Leupold Mark 4 Precision Rifle line-up was created so that even a force with a tight budget could outfit its officers with quality, dependable tactical optics. PR scopes pass the same tests for ruggedness and waterproofing as our LRT, MR/T, and CQ/T scopes. They're quite simply the best balance of price and performance you'll find anywhere, so you don't have to settle for anything less.

All models feature tall, target-style adjustment knobs with covers  
1/4-MOA "click" windage and elevation adjustments with 15-MOA of adjustment for each revolution  
Impeccable sight picture with excellent low-light performance  
Legendary Leupold ruggedness and absolute waterproof integrity

Index Matched Lens System on 3.5-10x40mm and 4.5-14x40mm Long Range  
Leupold's standard multicoat lens system on 3-9x40mm  
Duplex, Fine Duplex, or Mil Dot reticle options available  
Made in the U.S.A.



MARK 4 PR MODELS	RETICLE & PART NUMBER	
3-9X40MM PR	DUPLEX	56860*
	MIL DOT	56870*
3.5-10X40MM PR	DUPLEX	56125*
	MIL DOT	56120*
4.5-14X40MM PR LONG RANGE	DUPLEX	56140*
	FINE DUPLEX	56145*
	MIL DOT	56130*

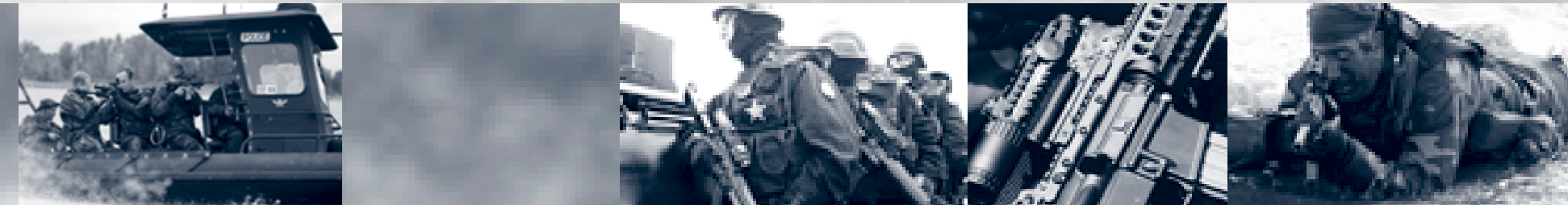
\* NEW FOR 2004  
• ILLUMINATED RETICLE  
MATTE BLACK FINISH ON ALL MODELS



3-9X40MM PR

3.5-10X40MM PR

4.5-14X40MM PR LONG RANGE



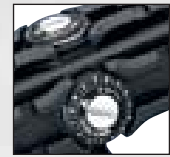
C L O S E Q U A R T E R / T A C T I C A L

The Leupold Mark 4® 1-3x14mm CQ/T® is a revolutionary optical sight for tactical firearms such as the AR-15 and M16. Developed in cooperation with both the U.S. military and law enforcement agencies, the Mark 4 CQ/T combines the strengths of a red dot sight and a variable power riflescope. Incredibly tough, 100% waterproof, and devastatingly accurate, only the Mark 4 CQ/T is ready and able

to handle the variety of close-contact situations common to both law enforcement and the military. **True 1x setting** functions as your non-magnifying, illuminated sight for tactical scenarios or engaging targets at extremely close range

**2x or 3x settings** give you the additional power to accurately engage targets at medium ranges. **Leupold Circle Dot reticle** is a bold aiming point for the operator, and also provides range estimation

**1/2-MOA "click" adjustments** for windage and elevation. **Ten reticle illumination settings** to match any light conditions without overwhelming your natural low-light vision—two low-intensity settings work with night-vision devices



**Attach accessories** using the integrated MIL-STD-1913 rail mount cross-slots

**Large field of view** for fast target acquisition and tracking of moving targets

**One AA battery** powers the Mark 4 CQ/T for up to 600+ hours at medium setting

**Made in the U.S.A.**



MARK 4 CQ/T MODELS	RETICLE & PART NUMBER
1-3X14MM CQ/T	• CIRCLE DOT 52155

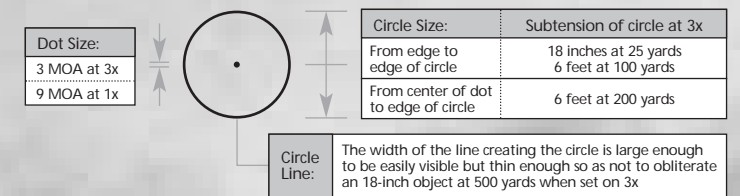
- \* NEW FOR 2004
- ILLUMINATED RETICLE
- MATTE BLACK FINISH ON ALL MODELS



1-3X14MM CQ/T

**Range Estimating with the Circle Dot Reticle:**

Estimating range using the Circle Dot reticle is simple. Place the target inside the circle of the reticle. At 3x the diameter equates to 6 feet in height at 100 yards. At 200 yards, 6 feet is measured from the dot to the edge of the circle.



# MOUNTING SYSTEMS

Why invest in a Leupold Mark 4 riflescope and then attach it to your rifle with a substandard mount? Leupold's American-made mounting systems are as rugged and reliable as the Leupold scopes they're intended to secure. No matter which mount you choose, you can count on it for rock-solid dependability and tack-driving repeatable accuracy.

## Mark 4 CQ/T Flat Top Mounting Bracket

Secure your Mark 4 CQ/T scope to any Picatinny-style mounting rail using this specially designed mounting bracket.



## Mark 4 AR-15/M16 Handle Mount

Securely attach your scope to any M16 variant with a carrying handle.

- Fit it into the sight channel of the carrying handle
- Delivers rock-solid stability for repeatable accuracy



## Mark 4 Tactical Mounts

System employs a slot and spline design and comes in 1-Piece and 2-Piece configurations.

- Mark 4 bases accept Mark 4 rings, cross-slot rings, and QRW / PRW rings
- Mark 4 Super High rings specifically designed for use with handle mounting configurations



## STD Mounts

- Versatile, available for many different rifles
- Forward part of the base accepts a dovetail ring, locking it solidly into position
- Rear ring is secured by windage adjustment screws
- Long Range STD mounts provide 1/4 degree of built-in elevation compensating for bullet drop at extreme ranges
- STD 2-Piece bases offer maximum accessibility to the breech area of your rifle
- STD 2-Piece bases fit right-hand and left-hand actions, and reversible bases are available for many actions
- Five different ring heights are available for STD bases



## Dual Dovetail Mounts

- Provides a classic low-profile mount for scopes on a variety of popular actions
- Bases accept all Leupold rotary dovetail rings
- Dovetail connections at both front and rear provide a rock-solid mounting platform



## QR Mount Promises Repeatable Accuracy

- Remove and reattach a scope using our QR mount and return to within half an inch of the original point-of-impact on the target
- Proven in extensive testing



## QRW Brings Leupold Accuracy to the Cross-Slot Format

- Steel detachable accuracy mounts that are based on the familiar cross-slot design
- Use the QRW mounts to achieve detachable accuracy



## PRW Rings Offer Permanent Cross-Slot Stability

- Steel rings that are based on the proven cross-slot design
- Uses the Leupold QRW bases or any other Picatinny-style mounting rails



## Ringmounts

- A high-quality alternative to ringmounts sold by firearms manufacturers and a no-tap mounting method for most .22 rimfire rifles with a 11mm, 13mm, or 3/8" dovetail rail
- Superior integrity and tighter tolerances because we machine them from solid stock



## Extension Ring Sets

- Extension rings give you 5/8" of additional ring spacing adjustment, so you can shorten or lengthen your ring spacing on rifles.
- Extension rings that mount on the front of STD and QR bases are available for 1-inch, 26mm (QR only), and 30mm maintubes.



## Rings for Cross-Slot Bases

- Engineered specifically to match up with cross-slot bases.
- Mount these incredibly stable rings on firearms such as tactical shotguns with built-in mounting rails.



## TACTICAL BASE FIT & RING HEIGHT INFORMATION

NEW PRODUCTS ARE SHOWN IN RED

FIREARM Base Model	BASE PART NUMBER		Maximum Ring Spacing in Inches															
	Gloss	Matte	5.6	5.8	5.9	5.8	5.8	6.2	6.2	5.5	6.5	6.5	6.1	6.1	6.0			
<b>Colt AR15 &amp; M16 (carry handle mount)</b>																		
Mark 4 AR15 / M16 Handle Mount	52136	L L	L30	L30	L30	L30	L30	L30	L30	L30	L30	L30	L30	L30	L30	L30		
Mark 4 1" Super High	50222																	
Mark 4 30mm Super High	52083																	
<b>Remington 700/721/725 (Long Action, Right Hand Only)</b>																		
STD 700 RH-LA (1-Piece)	50003	50004	L L	L30	L30	L30	L30	L30	H30	H30	H30	M30	M30	M30				
STD 700 Long Range RH-LA (1-Piece)	51732	L L	L30	L30	L30	L30	L30	H30	H30	H30	M30	M30	M30					
<b>Remington 700/721/725 (Long Action, Left Hand Only)</b>																		
STD 700 LH-LA (1-Piece)	50007		L L	L30	L30	L30	L30	L30	H30	H30	H30	M30	M30	M30				
<b>Remington 700/721/725 (All Long Action Models)</b>																		
STD 700 (2-Piece)	50015	50016	L L	L30	L30	L30	L30	L30	H30	H30	H30	M30	M30	M30				
STD 700 RVF (2-Piece)	50017	50018	L L	L30	L30	L30	L30	L30	H30	H30	H30	M30	M30	M30				
DD 700 (2-Piece)	50041	50042	M M	M30	M30	M30	M30	M30	H30	H30	H30	M30	M30	M30				
DD 700 RVF (2-Piece)	50044	50045	M M	M30	M30	M30	M30	M30	H30	H30	H30	M30	M30	M30				
QR 700 (2-Piece)	50049	50050	L L	L30	L30	L30	L30	L30	H30	H30	H30	M30	M30	M30				
QRW / PRW 700 (2-Piece)	49840	49841	L L	L30	L30	L30	L30	L30	H30	H30	H30	M30	M30	M30				
Mark 4 700 (2-Piece)	50039	M M	M30	M30	M30	M30	M30	H30	H30	H30	M30	M30	M30	M30				
<b>Remington 700/721/725 (Short Action, Right Hand Only)</b>																		
STD 700 RH-SA (1-Piece)	50005	50006	L L	L30	L30	L30	L30	L30	H30	H30	H30	M30	M30	M30				
STD 700 Long Range RH-SA (1-Piece)	51734	L L	L30	L30	L30	L30	L30	H30	H30	H30	M30	M30	M30					
QR 700 RH-SA (1-Piece)	51247	L L	L30	L30	L30	L30	L30	H30	H30	H30	M30	M30	M30					
Mark 4 700 (1-Piece)	50040	M M	M30	M30	M30	M30	M30	H30	H30	H30	M30	M30	M30					
DD XP-100 (1-Piece)	53570	L L	L30	L30	L30	L30	L30	H30	H30	H30	M30	M30	M30					
<b>Remington 700/721/725 (All Short Action Models)</b>																		
STD 700 (2-Piece)	50015	50016	L L	L30	L30	L30	L30	L30	H30	H30	H30	M30	M30	M30				
STD 700 RVF (2-Piece)	50017	50018	L L	L30	L30	L30	L30	L30	H30	H30	H30	M30	M30	M30				
DD 700 (2-Piece)	50041	50042	L L	L30	L30	L30	L30	L30	H30	H30	H30	M30	M30	M30				
DD 700 RVF (2-Piece)	50044	50045	L L	L30	L30	L30	L30	L30	H30	H30	H30	M30	M30	M30				
QR 700 (2-Piece)	50049	50050	L L	L30	L30	L30	L30	L30	H30	H30	H30	M30	M30	M30				
QRW / PRW 700 (2-Piece)	49840	49841	L L	L30	L30	L30	L30	L30	M30	M30	M30	L30	L30	L30				
Mark 4 700 (2-Piece)	50039	M M	M30	M30	M30	M30	M30	M30	H30	H30	H30	M30	M30	M30				
<b>Ruger M77 (Dovetail Receiver)</b>																		
RM Ruger M77 - 1" High	49951	49952	ALL	ALL														
RM Ruger M77 - 1" Super High	49954	49944																
RM Ruger M77 Ext. - 1" High	52301																	
RM Ruger M77 Ext. - 1" Super High	52302																	
RM Ruger M77 - 30mm Medium	51041		SA	SA	SA	SA	SA					SA	SA	SA				
RM Ruger M77 - 30mm High	51042		LA	LA	LA	LA	LA	ALL	ALL	ALL	LA	LA	LA					
RM Ruger M77 - 30mm Super Hi	51043																	
RM Ruger M77 Ext. - 30mm High	52304																	
RM Ruger M77 Ext. - 30mm Super High	52305																	
<b>Savage 110 through 116 (Right Hand, Long Action, Heavy Barrel)</b>																		
STD 110 RH (1-Piece)	49996	L L	L30	L30	L30	L30	L30	L30	H30	H30	H30	M30	M30	M30				
QR 110 RH (1-Piece)	50066	L L	L30	L30	L30	L30	L30	L30	H30	H30	H30	M30	M30	M30				
QR 110 (2-Piece)	52314	L L	L30	L30	L30	L30	L30	L30	H30	H30	H30	M30	M30	M30				
QRW / PRW 110 (2-Piece)	49833	L L	L30	L30	L30	L30	L30	L30	M30	M30	M30	L30	L30	L30				

Abbreviations				Mount System Types				Rings											
LA	— Long action	LH	— Left hand	RVR	— Reversible rear base	RM	— Ringmount	QR	— Detachable Accuracy: Quick Release Mount System	SH	— Super high 1"	H30	— High 30mm	L	— Low 1"	MX	— Medium 1" extension	◆	Indicates the correct ring to be used with this scope
SA	— Short action	LR	— Long rear base	RVF/R	— Reversible front and rear base	PRW	— Perma-Ring: Cross-slot format	QRW	— Detachable Accuracy: Cross-slot format	SH30	— Super high 30mm	M	— Medium 1"	SL	— Super low 1"	LX	— Low 1" extension		
RH	— Right hand	RVF	— Reversible front base			DD	— Dual Dovetail	STD	— Dovetail front and windage adjustable rear ring	H	— High 1"	M30	— Medium 30mm	HX	— High 1" extension	NA	— Not available		

NEW PRODUCTS ARE SHOWN IN RED

FIREARM Base Model	BASE PART NUMBER		Maximum Ring Spacing in Inches															
	Gloss	Matte	5.6	5.8	5.9	5.8	5.8	6.2	6.2	5.5	6.5	6.5	6.1	6.1	6.0			
<b>Savage 110 through 116 Round Receiver (Right Hand, Long Action, Heavy Barrel)</b>																		
STD 110 RH ROUND RCVR (1-Piece)	55701		L L	L30	L30	L30	L30	L30	H30	H30	H30	M30	M30	M30				
STD 10/110 ROUND RCVR (2-Piece)	55741	55742	L L	L30	L30	L30	L30	L30	H30	H30	H30	M30	M30	M30				
QR 10/110 ROUND RCVR (2-Piece)	55761		L L	L30	L30	L30	L30	L30	H30	H30	H30	M30	M30	M30				
<b>Savage 110 through 116 (Left Hand, Long Action, Heavy Barrel)</b>																		
STD 110 LH (1-Piece)	50219		L L	L30	L30	L30	L30	L30	H30	H30	H30	M30	M30	M30				
QR 110 (2-Piece)	52314		L L	L30	L30	L30	L30	L30	H30	H30	H30	M30	M30	M30				
QRW / PRW 110 (2-Piece)	49833		L L	L30	L30	L30	L30	L30	M30	M30	M30	L30	L30	L30				
<b>Savage 110 through 116 Round Receiver (Left Hand, Long Action, Heavy Barrel)</b>																		
STD 110 LH ROUND RCVR (1-Piece)	55711		L L	L30	L30	L30	L30	L30	H30	H30	H30	M30	M30	M30				
STD 10/110 ROUND RCVR (2-Piece)	55741	55742	L L	L30	L30	L30	L30	L30	H30	H30	H30	M30	M30	M30				
QR 10/110 ROUND RCVR (2-Piece)	55761		L L	L30	L30	L30	L30	L30	H30	H30	H30	M30	M30	M30				
<b>Savage 10 through 16 (Right Hand, Short Action, Heavy Barrel)</b>																		
STD 10 RH-SA (1-Piece)	52316	52317	L L	L30	L30	L30	L30	L30	H30	H30	H30	M30	M30	M30				
QR 110 (2-Piece)	52314		L L	L30	L30	L30	L30	L30	H30	H30	H30	M30	M30	M30				
QRW / PRW 110 (2-Piece)	49833		L L	L30	L30	L30	L30	L30	M30	M30	M30	L30	L30	L30				
<b>Savage 10 through 16 Round Receiver (Right Hand, Short Action, Heavy Barrel)</b>																		
STD 10 RH-SA ROUND RCVR (1-Piece)	55721	55724	L L	L30	L30	L30	L30	L30	H30	H30	H30	M30	M30	M30				
STD 10/110 ROUND RCVR (2-Piece)	55741	55742	L L	L30	L30	L30	L30	L30	H30	H30	H30	M30	M30	M30				
QR 10/110 ROUND RCVR (2-Piece)	55761		L L	L30	L30	L30	L30	L30	H30	H30	H30	M30	M30	M30				
<b>Savage 10 through 16 (Left Hand, Short Action, Heavy Barrel)</b>																		
STD 10 LH-SA (1-Piece)	52326		L L	L30	L30	L30	L30	L30	H30	H30	H30	M30	M30	M30				
QR 110 (2-Piece)	52314		L L	L30	L30	L30	L30	L30	H30	H30	H30	M30	M30	M30				
QRW / PRW 110 (2-Piece)	49833		L L	L30	L30	L30	L30	L30	M30	M30	M30	L30	L30	L30				
<b>Savage 10 through 16 Round Receiver (Left Hand, Short Action, Heavy Barrel)</b>																		
STD 10 LH-SA ROUND RCVR (1-Piece)	55731		L L	L30	L30	L30	L30	L30	H30									



# SPOTTING SCOPES



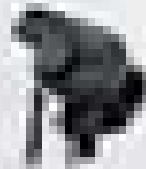
LEUPOLD MARK 4 / LEUPOLD GOLDEN RING

For the sniper team, two must see as one. Leupold spotting scopes' outstanding optics are designed to give you a crisp, bright sight picture, even in low light. Built with legendary Leupold ruggedness, they perform wherever the mission takes them, and they prove it every day, around the world: an April 7, 2003 *Time* magazine photo essay on the war in Iraq shows U.S. Special Forces using our 12-40x60mm spotting scope to locate enemy positions.

### **Leupold Mark 4 12-40x60mm Tactical Spotting Scope**

The scope most ideally suited for use as part of a sniper team. The Mark 4 12-40x60mm Tactical spotting scope features a Leupold Mil Dot "round dot" reticle for both range estimation and tactical cooperation with the shooter. It's the same proven reticle available in Mark 4 riflescopes.

- Estimate range at any power setting
- Folded light path technology gives you greater magnification in a lightweight, compact design (12.4" long, 37 oz)
- Multicoat 4<sup>®</sup> lens coatings ensure maximum light transmission, brightness, clarity, and contrast
- Universal 1/4-20 thread tripod attachment
- Includes soft-side case



### **Leupold Golden Ring 10-20x40mm Compact Spotting Scope**

- High power in a package so small and so lightweight that you can wear it around your neck, or stow it in a cargo pocket or pack. Ideal when saving space is paramount.
- 7.5" long and weighs just 15.8 oz
- 100% rugged and waterproof
- Can be used handheld or with a tripod

### **New! Leupold Golden Ring 15-30x50mm Compact Spotting Scope**

Our newest Golden Ring spotting scope is powerful, with a maximum magnification of 30x, yet it's a mere 11" long and weighs in at a trim 21.5 ounces. The combination gives you the power needed for long distances in a package small enough to carry on your belt.

Standard multicoated exterior lenses for enhanced light management

Sharp, bright image across the visual field, even in low light

100% rugged and waterproof

Perfect for compact tripod mounting



LEUPOLD MARK 4  
12-40X60MM  
TACTICAL



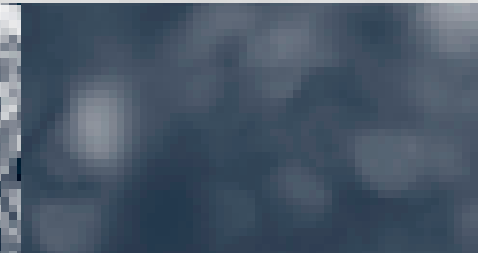
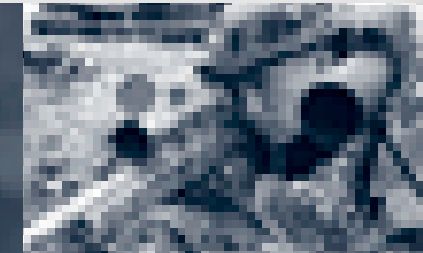
LEUPOLD GOLDEN RING  
10-20X40MM  
COMPACT



LEUPOLD GOLDEN RING  
15-30X50MM  
COMPACT



# RB800 & SPOTTING SCOPES



LEUPOLD WIND RIVER

## Leupold Wind River® RB800 Range Finding Binocular

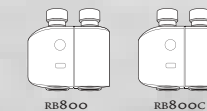
Accurate determination of range can be a lifesaver in some situations. The RB800 takes the guesswork out of it, giving you the precise distance to targets up to 850 meters away. An invaluable resource for military, police sniper/spotter teams, or even the cop on the street, the RB800 binoculars are powerful, and lightweight enough for everyday duty.

**8x32mm optical system** gives you generous magnification; a bright, clear image; and an optimal field of view

**Scan mode** lets you continuously update ranges of a moving target or as you scan different objects

The **built-in compass** in the RB800C gives the direction to a target

**Tough, waterproof,** with shock-absorbing armor for increased durability



## Leupold Wind River Sequoia™ 15-45x60mm Spotting Scopes

These two variable power spotting scopes are powerful, durable, and absolutely waterproof. That's the ideal combination for tactical use, whether at the range or in the field.

**Incredibly powerful** with a sharp, bright sight picture throughout the range of magnification

**Two models available**, one with a straight eyepiece and a second with a 45° angled eyepiece for ease of use in a variety of positions



SEQUOIA 15-45X60MM

SEQUOIA 15-45X60MM ANGLED

Rubber, shock-absorbing armor offers extra protection from rigorous duty

**Long eye relief and twist-up eyecups** make extended viewing more comfortable, even with glasses

### **New!** Leupold Wind River Spotting Scope Kits

Both the angled and straight eyepiece models of the Sequoia™ are available in kits that include everything you need to head straight to the field:

**Sequoia spotting scope** (either straight or angled eyepiece)

Heavy-duty neoprene protective cover

**Lightweight, compact tripod** with a multi-directional, tilting head and adjustable legs with non-slip rubber feet

**Protective case** with black matte diamond plate body and reinforced edges



STANDARD MODEL KIT #55886

45° ANGLED EYEPIECE MODEL KIT #55888

# BINOCULARS



LEUPOLD GOLDEN RING / LEUPOLD WIND RIVER

## Leupold Golden Ring Compact Binoculars

They may be small in size but you won't believe how much power and performance is packed into the Golden Ring 9x25mm I.F. and Golden Ring 10x28mm I.F. binoculars. When lightweight performance is a must, these are the binoculars you'll want to have at hand.

**Multicoat 4 lens coatings** on all optical elements for exceptional brightness and clarity

**Generous eye relief** for use with glasses

**Individual eye focus**

**One Time Focus feature** correctly focuses for most distances

**Absolutely rugged**, 100% waterproof, and guaranteed for life

**American-made** at our Beaverton, Oregon, factory



LEUPOLD GOLDEN RING COMPACT



9X25MM I.F. 10X28MM I.F.

## Leupold Wind River Binoculars

Leupold Wind River® optics have come into their own, and earned a reputation as hard-working, rugged binoculars that perform well no matter the mission. Well-designed, and built solid with a rubber armor coating, they're 100 percent waterproof in all conditions, with crisp, bright sight pictures, even in low light. They'll be a valuable addition to any tactical unit for years to come.



PINNACLES SERIES



8X42MM 10X42MM

## Leupold Wind River Pinnacles™ Series

Available in 8x42mm and 10x42mm models

**Phase coated**, silver enhanced roof prisms offer excellent resolution

**Interchangeable eyecups** — quickly and easily switch between vented, retractable contoured eyecups and twisted-up eyecups especially suited for users with glasses



Twist-up Eyecups



OLYMPIC SERIES



8X42MM 10X50MM 12X50MM BLACK & CAMO

## Leupold Wind River Olympic™ Series

Available in Olympic™ 8x42mm, 10x50mm, 10x50mm Advantage Timber® HD™, and 12x50mm models

**Center focus**, phase coated, roof prism binoculars

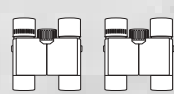
**Twist-up eyecups**

## Olympic Compact Series Binoculars

Get the same outstanding performance and many of the same features as the full-size Olympics, in an even lighter-weight package.



OLYMPIC COMPACT SERIES



8X25MM 10X25MM



# BINOCULARS



LEUPOLD WIND RIVER

**New! Leupold Wind River Katmai™**  
 The Katmai™ Series features a 32mm objective lens that gives you full-size optical performance in a compact, lightweight binocular.  
 Available in 6x32mm, 8x32mm, and 10x32mm models  
 Compact size with full-size optical performance  
 L-coated™ prisms and multi-coated lenses for enhanced light management and a bright, clear sight picture

**Leupold Wind River Cascades™ Series**  
 Available in 8x42mm and 10x42mm models  
 New! Integrated center focus / lockable diopter control  
 Center focus roof prism binoculars  
 Slim, ergonomics in-line design—they'll fit naturally in all sizes of hands  
 Twist-up eyecups

**Leupold Wind River Mesa™ Series**  
 Available in Mesa™ 8x42mm, 8x42mm Advantage Timber HD, 10x50mm, and 10x50mm Advantage Timber HD models  
 Center focus porro prism binoculars with lockable focus dial  
 Twist-up eyecups  
**Mesa Compact Series**  
 Available in 8x23mm and 10x23mm models  
 Inverted porro prism design  
 Roll-down eyecups

**New! Leupold Wind River Camouflaged Binoculars**  
 Now you can get Advantage Timber® HD™ camo on a pair of rugged, waterproof Leupold Wind River binoculars. Our Olympic 10x50mm, and Mesa 8x42mm and 10x50mm full-size binoculars are available with the realistic Advantage Timber HD camouflage pattern.



**KATMAI SERIES**  
 6x32MM 8x32MM 10x32MM

**CASCADES SERIES**  
 8x42MM 10x42MM

**MESA SERIES**  
 8x42MM BLACK & CAMO 10x50MM BLACK & CAMO

**MESA COMPACT SERIES**  
 8x23MM 10x23MM

# TOOLS AND ACCESSORIES

## Scope Cover

Protects your scope's finish from dirt and damage. Five sizes. Made of water-resistant, nylon-laminated neoprene.

Scope Cover		
	Part No.	Price
Small	#53572	\$26.00
Medium	#53574	\$26.00
Large	#53576	\$26.00
X-Large	#53578	\$26.00
XX-Large	#53580	\$26.00



## Mark 4 CQ/T<sup>®</sup> Scope Cover

You've made an investment in the best...now protect it! The same as our other popular scope covers, designed specifically to fit our Mark 4 CQ/T. Easy to put on and remove, the black neoprene sleeve offers 6mm of thick protection for your scope from dirt and moisture.

Mark 4 CQ/T Scope Cover		
Part No.	#54857	\$36.00

## Torx<sup>®</sup> Driver

Gives you a better handle on driving and securing Torx-head mounting screws, which won't strip like old-fashioned hex-head screws.



Torx Driver		
Part No.	#50818	\$12.00

## The Torx Design

The deep-engaging lobes of the Torx<sup>®</sup> design mean you won't strip screw heads or distort drivers, so you can seat base screws properly and securely. Every Leupold mount system includes Torx head screws and a Torx driver.



Torx is a registered trademark of CamCar, Inc.

## Ring Wrench

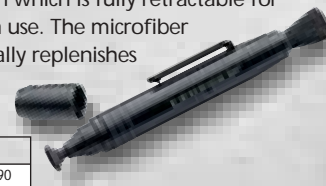
The ideal tool for installing rings without damaging your rifle or scope. Fits both 30mm and 1" rings.



Ring Wrench		
Part No.	#48762	\$18.00

## LensPen

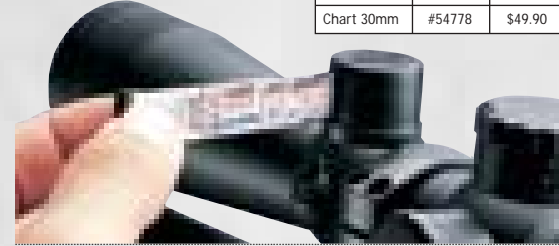
Has a natural hair brush which is fully retractable for protection when not in use. The microfiber cleaning tip automatically replenishes itself with cleaning compound.



LensPen		
Part No.	#48807	\$11.90

## Retractable Ballistic Chart

Keep critical, custom ballistics data where you can access it from any shooting position. Attaches to your scope's maintube (1" or 30mm) for instant access, and the durable metal tape with your ballistics data automatically retracts after use.



Retractable Ballistic Chart		
	Part No.	Price
Chart 1"	#54804	\$49.90
Chart 30mm	#54778	\$49.90

## Mounting Tool

Features one slotted screwdriver, two Torx drivers, and five hex-head drivers.



Mounting Tool		
Part No.	#52296	\$24.00

## Anti-Reflection Device (ARD)

A quarter-inch deep and perforated with scores of tiny, light-transmitting honeycomb baffles, the ARD reduces lens glare.



ARD		
Part No.	#52292	\$26.00

## Leupold Mark 4 Ring Torque Wrench

With this special wrench you can not only tighten, but loosen the mounting screws on Mark 4 style rings. Delivers the proper amount of torque value (65-in lbs) when installing Mark 4 style rings for return to zero accuracy. Part No. 48701 **SKU #48701**



## Magnetic Boresighter

Puts your rifle, shotgun, or pistol "on the paper" fast. Fits all rifles, pistols, or shotguns, requires no spuds or batteries, and works with any optical sight. Recheck your zero quickly, anywhere, anytime.



Magnetic Boresighter		
Part No.	#53500	\$69.00

## Lens Shades

Can be threaded together to create custom lens shade lengths. 2.5" and 4" models to fit 40mm and 50mm Leupold Adjustable Objective and Long Range riflescopes.

Fits 2004 VX-II, 2004 VX-III, and all Mark 4 40mm objective scopes		
	Part No.	Price
40mm 2.5" Matte	#56187	\$38.00
40mm 4" Matte	#56190	\$42.00

Fits all pre-2004 VX-II, Vari-X II, and Vari-X III 40mm Adj. Obj. scopes		
	Part No.	Price
40mm 2.5" Matte	#52344	\$38.00
40mm 4" Matte	#52347	\$42.00



Fits all 50mm objective scopes except LPS		
	Part No.	Price
50mm 2.5" Matte	#52350	\$48.00
50mm 4" Matte	#52353	\$52.00

## New! Full-Size Tripod

Our full-size tripod is sturdy and stable, yet lightweight at just 9.3 lbs, and compact when folded. Extends to 65" and collapses to 30". Features three-section legs, and a three-way panning head with quick-release base that makes it easy to find and follow objects. **SKU #56441**



## New! Compact Tripod

When a full-size tripod is just "too much equipment" to take into the field, our compact tripod gets the job done. The 4-section legs extend to 31.5" and collapses to a mere 15". The adjustable ball head with quick-release base gives you incredible viewing versatility. **SKU #56446**



## Shoulder Pod

The shoulder pod is the fastest way to bring your spotting scope into action. Just snug it to your shoulder for steady viewing. **SKU #48643**



## New! X-treme<sup>™</sup> Binocular Strap

Even the lightest binoculars can get heavy after hours of hanging around your neck. Now, with the new X-treme<sup>™</sup> binocular strap, the weight is taken off your neck and evenly distributed across your back through the "X" shaped design of the strap, keeping your binoculars close to your body to prevent swinging yet ready at hand at a moments notice. **SKU #55895**



## Binocular Tripod Adapter

With the binocular tripod adapter, you can enjoy the same steady view with your binoculars that's normally reserved for spotting scopes. **SKU #48826**



## The Tactical Locker

Leupold is pleased to offer a collection of apparel, outerwear, and specialty items from the Tactical Locker. It's the only place to get official Leupold hats, jackets, shirts, and other great items bearing the Leupold logo. To request your copy of the Tactical Locker brochure, call (503) 526-1400, or visit us at [www.leupold.com](http://www.leupold.com).



## PRODUCT SPECIFICATIONS

	BINOCULAR AND SPOTTING SCOPES FEATURES AND DIMENSIONS															
	Actual Magnification		Linear Field of View		Angular Field of View	Weight		Length		Objective Aperture	Twilight Factor	Exit Pupil	Eye Relief	Interpupillary Distance	Close Focus Distance	
	ft at 100 yd	m at 100 m	degrees	ounce	gram	inches	cm	mm	mm	mm	mm	mm	mm	mm	ft	m
<b>Leupold Wind River Pinnacles Series Binoculars</b>																
8x42mm	8x	34.1	11.4	6.5	23.0	652	5.5	13.8	42	18.3	5.3	17.8	60 - 70	6.6	2.0	
10x42mm	10x	26.7	8.9	5.1	25.0	708	5.5	13.8	42	20.5	4.3	16.5	60 - 70	6.6	2.0	
<b>Leupold Wind River Olympic Series Binoculars</b>																
8x25mm Compact	8x	27.3	9.1	5.2	14.8	420	4.9	12.4	25	14.1	3.1	16.5	60 - 70	8.2	2.5	
10x25mm Compact	10x	26.2	8.7	5.0	14.8	420	4.9	12.4	25	15.8	2.5	15.5	60 - 70	9.8	3.0	
8x42mm	8x	32.5	10.8	6.2	21.8	619	5.7	14.6	42	18.3	5.3	18.0	60 - 70	7.5	2.3	
10x50mm (& Camouflage)	10x	26.2	8.7	5.0	25.7	728	6.7	17.0	50	22.4	5.0	18.0	60 - 70	10.5	3.2	
12x50mm	12x	25.2	8.4	4.8	25.7	730	6.6	16.7	50	22.5	4.0	15.5	60 - 70	13.1	4.0	
<b>Leupold Wind River Katmai Series Binoculars</b>																
6x32mm	6x	42.5	14.2	8.1	18.2	515	4.1	10.5	32	13.9	5.3	16.6	57 - 72	4.9	1.5	
8x32mm	8x	33.5	11.2	6.4	18.9	535	4.1	10.5	32	16.0	4.0	16.0	57 - 72	4.9	1.5	
10x32mm	10x	27.2	9.1	5.2	18.2	515	4.1	10.5	32	17.9	3.2	7.6	57 - 72	4.9	1.5	
<b>Leupold Wind River Cascades Series Binoculars</b>																
8x42mm	8x	34.1	11.4	6.5	22.9	650	5.5	14.0	42	18.3	5.0	18.0	58 - 72	9.9	3.0	
10x42mm	10x	26.7	8.9	5.1	23.1	656	5.5	14.0	42	20.5	4.0	16.0	58 - 72	9.9	3.0	
<b>Leupold Wind River Mesa Series Binoculars</b>																
8x23mm Compact	8x	33.6	11.2	6.4	13.2	375	4.2	10.7	23	13.5	2.5	9.0	60 - 70	9.8	3.0	
10x23mm Compact	10x	26.2	8.7	5.0	13.2	375	4.2	10.7	23	15.2	2.0	9.0	60 - 70	9.8	3.0	
8x42mm (& Camouflage)	8x	34.1	11.4	6.5	26.5	750	5.2	13.2	42	18.3	5.0	18.0	60 - 70	16.4	5.0	
10x50mm (& Camouflage)	10x	28.8	9.6	5.5	32.3	917	6.5	16.6	50	22.4	4.9	18.0	60 - 70	29.5	9.0	
<b>Leupold Wind River Range Finding Binoculars</b>																
RB800 8x32mm	8x	31.4	10.5	6.0	23.0	652	5.4	13.8	32	16.0	4.0	16.0	58 - 72	19.7	6.0	
RB800C 8x32mm	8x	31.4	10.5	6.0	23.0	652	5.4	13.8	32	16.0	4.0	16.0	58 - 72	19.7	6.0	
<b>Leupold Golden Ring Binoculars</b>																
9x25mm I.F.	9x	27.8	9.3	5.3	10.1	286	4.5	13.0	25	15.0	2.8	14.0	58 - 72	15.0	4.6	
10x28mm I.F.	10x	25.1	8.4	4.8	10.9	309	5.0	14.0	28	17.0	2.8	14.0	58 - 72	15.0	4.6	
<b>Leupold Golden Ring Spotting Scopes</b>																
10-20x40mm Compact	10.0x - 19.9x	19.9 - 13.6	6.6 - 4.5	3.8 - 2.6	15.8	447	7.5	19.1	40	20.0 - 28.3	4.0 - 2.0	18.5 - 17.2	NA	5.5	1.7	
15-30x50mm Compact	15.2x - 30.4x	13.6 - 8.9	4.5 - 3.0	2.6 - 1.7	21.5	610	11.0	27.9	50	27.6 - 39.0	3.3 - 1.6	17.5 - 17.1	NA	13.5	4.1	
<b>Leupold Mark 4 Spotting Scope</b>																
12-40x60mm Tactical	12.7x - 38.1x	16.8 - 5.2	5.6 - 1.8	3.2 - 1.0	37.0	1049	12.4	31.5	60	26.8 - 48.9	4.8 - 1.5	30.0 - 30.0	NA	36.0	11.0	
<b>Leupold Wind River Sequoia Spotting Scopes</b>																
15-45x60mm	15x - 45x	13.1 - 6.3	4.4 - 2.1	2.5 - 1.2	35.1	995	13.0	33.1	60	30.0 - 52.0	3.9 - 1.3	16.5 - 13.0	NA	29.9	9.1	
15-45x60mm Angled	15x - 45x	13.1 - 6.3	4.4 - 2.1	2.5 - 1.2	35.1	995	12.5	31.7	60	30.0 - 52.0	3.9 - 1.3	16.5 - 13.0	NA	29.9	9.1	

	TACTICAL SCOPES FEATURES																												
	Dimensions (inches unless otherwise stated)									Actual Magnification		Field of View				Optimum Eye Relief				Objective Clear Aperture		Weight		Elevation Adjustment Range**		Windage Adjustment Range**			
	A*	B*	C*	D	E*	F	G*	H	I*	Low	High	Low	High	Low	High	Low	High	Inch	mm	ounce	gram	MOA	MOA	MOA	MOA				
<b>Leupold Mark 4 Long Range / Tactical (LR/T)</b>																													
10x40mm LR/T M1	13.1	6.1	2.3	2.2	2.7	4.3	2.0	1.7	30mm	10.0	—	11.1	—	3.7	—	3.4	—	86	—	1.6	40	21.0	595	90	60				
10x40mm LR/T M3*	13.1	6.1	2.3	2.2	2.7	4.3	2.0	1.7	30mm	10.0	—	11.1	—	3.7	—	3.4	—	86	—	1.6	40	21.0	595	75	52				
16x40mm LR/T M1	13.1	6.0	3.1	1.4	2.7	4.3	2.0	1.7	30mm	15.6	—	6.8	—	2.3	—	4.0	—	101	—	1.6	40	22.5	638	140	45				
3.5-10x40mm LR/T M1	13.5	6.2	2.4	2.4	3.2	4.3	1.8	1.6	30mm	3.2	9.5	29.9	11.0	10.0	3.7	4.7	3.4	119	93	1.6	40	19.5	553	65	65				
3.5-10x40mm LR/T M1 III. Ret.	13.5	6.2	2.4	2.4	3.2	4.3	1.8	1.7	30mm	3.2	9.5	29.9	11.0	10.0	3.7	4.7	3.4	119	93	1.6	40	21.0	595	65	65				
3.5-10x40mm LR/T M3 *	13.5	6.2	2.4	2.4	3.2	4.3	1.8	1.6	30mm	3.2	9.5	29.9	11.0	10.0	3.7	4.7	3.4	119	93	1.6	40	19.5	553	65	65				
3.5-10x40mm LR/T M3 III. Ret.	13.5	6.2	2.4	2.4	3.2	4.3	1.8	1.7	30mm	3.2	9.5	29.9	11.0	10.0	3.7	4.7	3.4	119	93	1.6	40	21.0	595	65	65				
4.5-14x50mm LR/T M1	12.5	5.5	1.6	2.4	3.2	3.7	2.3	1.6	30mm	4.8	14.3	19.0	7.6	6.3	2.5	4.5	3.6	113	93	2.0	50	22.0	624	75	70				
4.5-14x50mm LR/T M1 III. Ret.	12.8	5.5	1.6	2.4	3.2	3.7	2.3	1.7	30mm	4.8	14.3	19.0	7.6	6.3	2.5	4.5	3.6	113	93	2.0	50	22.0	624	75	70				
4.5-14x50mm LR/T M1 III. Ret. (metric)	12.8	5.5	1.6	2.4	3.2	3.7	2.3	1.7	30mm	4.8	14.3	19.0	7.6	6.3	2.5	4.5	3.6	113	93	2.0	50	22.0	624	75	70				
6.5-20x50mm LR/T M1	14.5	6.5	2.6	2.4	3.2	4.9	2.3	1.6	30mm	6.5	19.5	14.3	5.5	4.8	1.8	4.4	3.6	111	93	2.0	50	22.0	624	70	70				
6.5-20x50mm LR/T M1 III. Ret.	14.4	6.5	2.6	2.4	3.2	4.9	2.3	1.7	30mm	6.5	19.5	14.3	5.5	4.8	1.8	4.4	3.6	111	93	2.0	50	22.0	624	70	70				
8.5-25x50mm LR/T M1	14.5	6.5	2.6	2.4	3.2	4.9	2.3	1.6	30mm	8.2	25.1	11.2	4.4	3.7	1.4	5.3	3.7	134	94	2.0	50	22.5	638	72	70				
8.5-25x50mm LR/T M1 III. Ret.	14.4	6.5	2.6	2.4	3.2	4.9	2.3	1.7	30mm	8.2	25.1	11.2	4.4	3.7	1.4	5.3	3.7	134	94	2.0	50	22.5	638	72	70				
<b>Leupold Mark 4 Mid Range / Tactical (MR/T)</b>																													
3-9x36mm MR/T M1	11.3	5.8	1.9	2.4	3.1	2.6	1.7	1.7	30mm	3.0	8.7	35.5	13.6	11.7	4.5	3.7	3.0	93	76	1.4	36	16.0	454	90	90				
3-9x36mm MR/T M1 III. Ret.	11.3	5.8	1.9	2.4	3.1	2.6	1.7	1.7	30mm	3.0	8.7	35.5	13.6	11.7	4.5	3.7	3.0	93	76	1.4	36	16.0	454	90	90				
3-9x36mm MR/T M3 *	11.3	5.8	1.9	2.4	3.1	2.6	1.7	1.7	30mm	3.0	8.7	35.5	13.6	11.7	4.5	3.7	3.0	93	76	1.4	36	16.0	454	90	90				
3-9x36mm MR/T M3 III. Ret.*	11.3	5.8	1.9	2.4	3.1	2.6	1.7	1.7	30mm	3.0	8.7	35.5	13.6	11.7	4.5	3.7	3.0	93	76	1.4	36	16.0	454	90	90				
<b>Leupold Mark 4 Precision Rifle (PR)</b>																													
3-9x40mm PR	12.3	5.6	2.3	2.2	3.1	3.5	1.8	1.6	1.0	3.3	8.6	32.9	13.0	11.0	4.4	4.3	3.2	108	82	1.6	40	13.0	369	56	56				
3.5-10x40mm PR	12.6	5.8	2.3	2.4	3.2	3.5	1.8	1.6	1.0	3.3	9.6	29.6	11.0	9.9	3.6	4.4	3.7	113	93	1.6	40	13.5	383	51	51				
4.5-14x40mm PR	12.6	5.4	1.8	2.3	3.2	4.0	2.0	1.6	30mm	4.9	14.6	18.6	7.3	6.2	2.4	4.4	3.7	113	93	1.6	40	16.0	454	95	95				
<b>Leupold Mark 4 Close Quarter / Tactical (CO/T)</b>																													
CO/T 1-3x14mm	8.8	1.6	—	—	3.0	—	1.2	1.5	2.9	1.0	2.9	112.0	41.0	37.5	13.9	2.8	2.0	71	51	0.6	14	17.5	496	90	90				

### NEW PRODUCTS ARE SHOWN IN RED

\* On all fixed power scopes, dimension "E" is measured from the back of the eyepiece to the beginning of the eyepiece tube threads.  
 \*\* On all scopes with adjustable objectives, dimension "G" is measured over the knurled ring.  
 \* Dimensions "A" and "E" may vary according to the focusing position of the eyepiece.  
 \* On CO/T, dimension is measured from where mounting foot rests on the base.

## Contacting Leupold Technical Service

Leupold & Stevens, Inc., P.O. Box 688, Beaverton, OR 97075-0688

Phone: (503) 526-1400  
 8:00 a.m. - 4:30 p.m. PST M-F

Fax: (503) 526-1402  
 24 hours a day, seven days a week

E-mail: productspecialist@leupold.com

To locate dealers near you, call the Leupold Authorized Dealer Network 1 (800) 929-4949 or visit our Web site: www.leupold.com.

To find great places to shoot in your area, visit www.wheretoshoot.org.

To send a product to Leupold Technical Service:

By Parcel Service:  
 Leupold & Stevens, Inc.  
 Attn: Technical Service Dept.  
 14400 NW Greenbrier Parkway  
 Beaverton, OR 97006-5790 USA

By Mail:  
 Leupold & Stevens, Inc.  
 Attn: Technical Service Dept.  
 P.O. Box 688  
 Beaverton, OR 97075-06